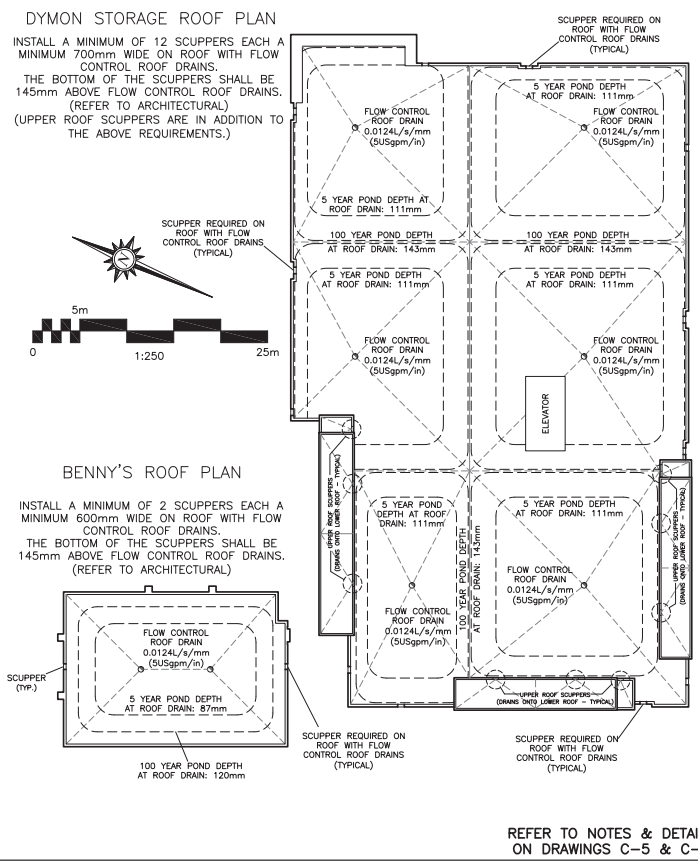
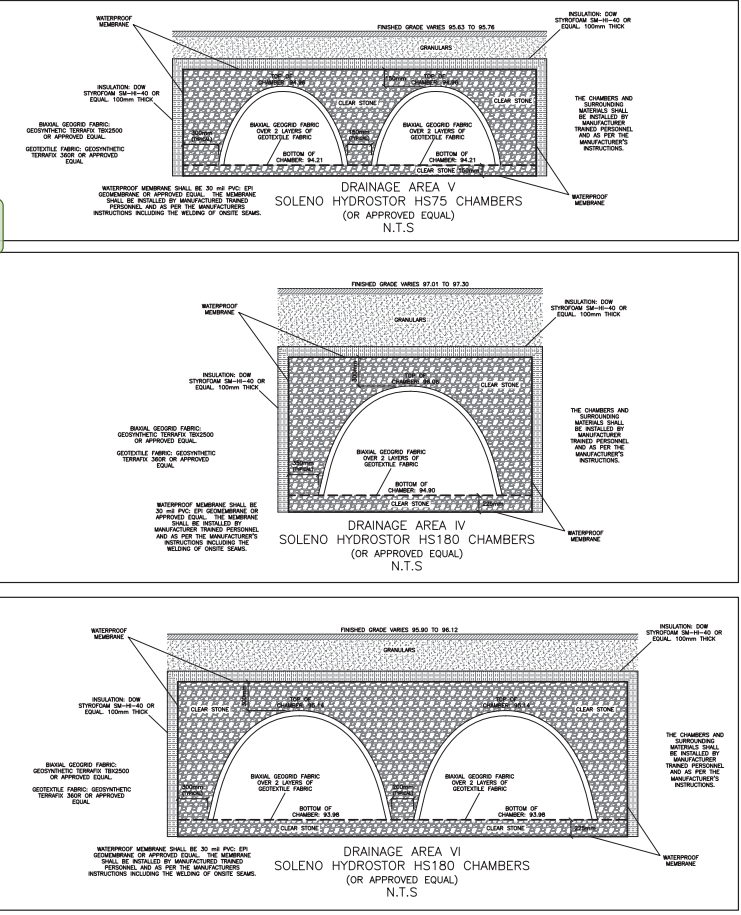


Allison Hamlin

ALLISON HAMLIN
MANAGER (A), DEVELOPMENT REVIEW WEST
PLANNING, REAL ESTATE & ECONOMIC DEVELOPMENT
DEPARTMENT, CITY OF OTTAWA

APPROVED
By Allison Hamlin at 9:50 am, Oct 05, 2022



KEY PLAN

PROPOSED 6-STORY STORAGE FACILITY & 1-STORY BUILDING 1375 CLYDE AVENUE OTTAWA, ONTARIO

No.	DATE	REVISION
8	JUL 29-22	RE-ISSUED FOR APPROVAL
7	APR 28-22	RE-ISSUED FOR APPROVAL
6	JAN 5-22	ISSUED FOR TENDER
5	DEC 14-21	RE-ISSUED FOR APPROVAL
4	DEC 9-21	ISSUED FOR PERMIT
3	NOV 23-21	ISSUED FOR COORDINATION
2	JAN 8-20	ISSUED FOR APPROVAL
1	DEC 12-19	ISSUED FOR COORDINATION

D.B. GRAY ENGINEERING INC.
700 Long Point Circle
Ottawa, Ontario
613-425-8044
d.gray@dbgrayengineering.com

DETAILS 1

Engineer's Seal: **D.B. GRAY**, 17016502, JUL 29-22, PROVINCE OF ONTARIO

Drawn: **D.B.G.**, Hor. Scale, Vert. Scale, Date: SEP 17-19, Job No: 19058

Not Valid Unless Signed & Dated

Attamlin

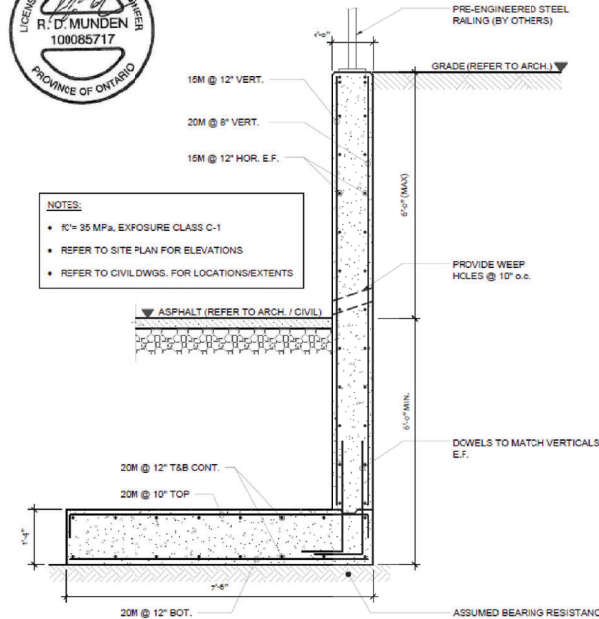
ALLISON HAMLIN
MANAGER (A), DEVELOPMENT REVIEW WEST
PLANNING, REAL ESTATE & ECONOMIC DEVELOPMENT
DEPARTMENT, CITY OF OTTAWA

APPROVED

By Allison Hamlin at 9:50 am, Oct 05, 2022



- NOTES:
- R_c = 35 MPa, EXPOSURE CLASS C-1
 - REFER TO SITE PLAN FOR ELEVATIONS
 - REFER TO CIVIL DWGS. FOR LOCATIONS/EXTENTS



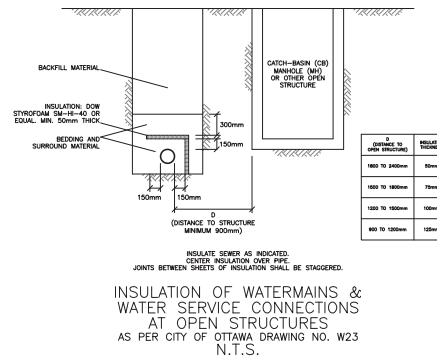
SECTION: TYP. RETAINING WALL
SCALE: 1/2\"/>



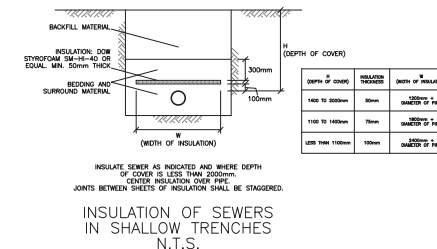
PROJECT NAME AND ADDRESS:
DYMION CLYDE
1305 CLYDE AVE., OTTAWA, ONTARIO
DRAWING NAME:
RETAINING WALL

DESIGNED BY: R. MUNDEN
DRAWN BY: A. WITTICH
DATE: 2022-08-30
DRAW PROJECT #: 21-005

SK1



INSULATION OF WATERMAINS & WATER SERVICE CONNECTIONS AT OPEN STRUCTURES
AS PER CITY OF OTTAWA DRAWING NO. W23
N.T.S.



INSULATION OF SEWERS IN SHALLOW TRENCHES
N.T.S.

REFER TO NOTES & DETAILS
ON DRAWINGS C-5 & C-6

KEY PLAN



No.	DATE	REVISION
8	JUL 4-22	RE-ISSUED FOR APPROVAL
7	APR 28-22	RE-ISSUED FOR APPROVAL
6	JAN 5-22	ISSUED FOR TENDER
5	DEC 14-21	RE-ISSUED FOR APPROVAL
4	DEC 9-21	ISSUED FOR PERMIT
3	NOV 23-21	ISSUED FOR COORDINATION
2	JAN 8-20	ISSUED FOR APPROVAL
1	DEC 12-19	ISSUED FOR COORDINATION

D.B. GRAY ENGINEERING INC.
Business Management • Drafting & Design • Storm & Sanitary Sewers • Pavement
700 Long Point Circle 613-425-8044
Ottawa, Ontario d.gray@dbgrayengineering.com

Project
PROPOSED 6-STORY
STORAGE FACILITY &
1-STORY BUILDING
1375 CLYDE AVENUE
OTTAWA, ONTARIO

Drawing Title
DETAILS 2

Engineer's Seal
D.B. GRAY
170145502
JUL 4-22
PROVINCE OF ONTARIO
NOT VALID UNLESS
SIGNED & DATED

Drawn
D.B.G.
Hor. Scale
Vert. Scale
Date: SEP 17-19
Job No. 19058
Drawing No.
C-7
of 8