

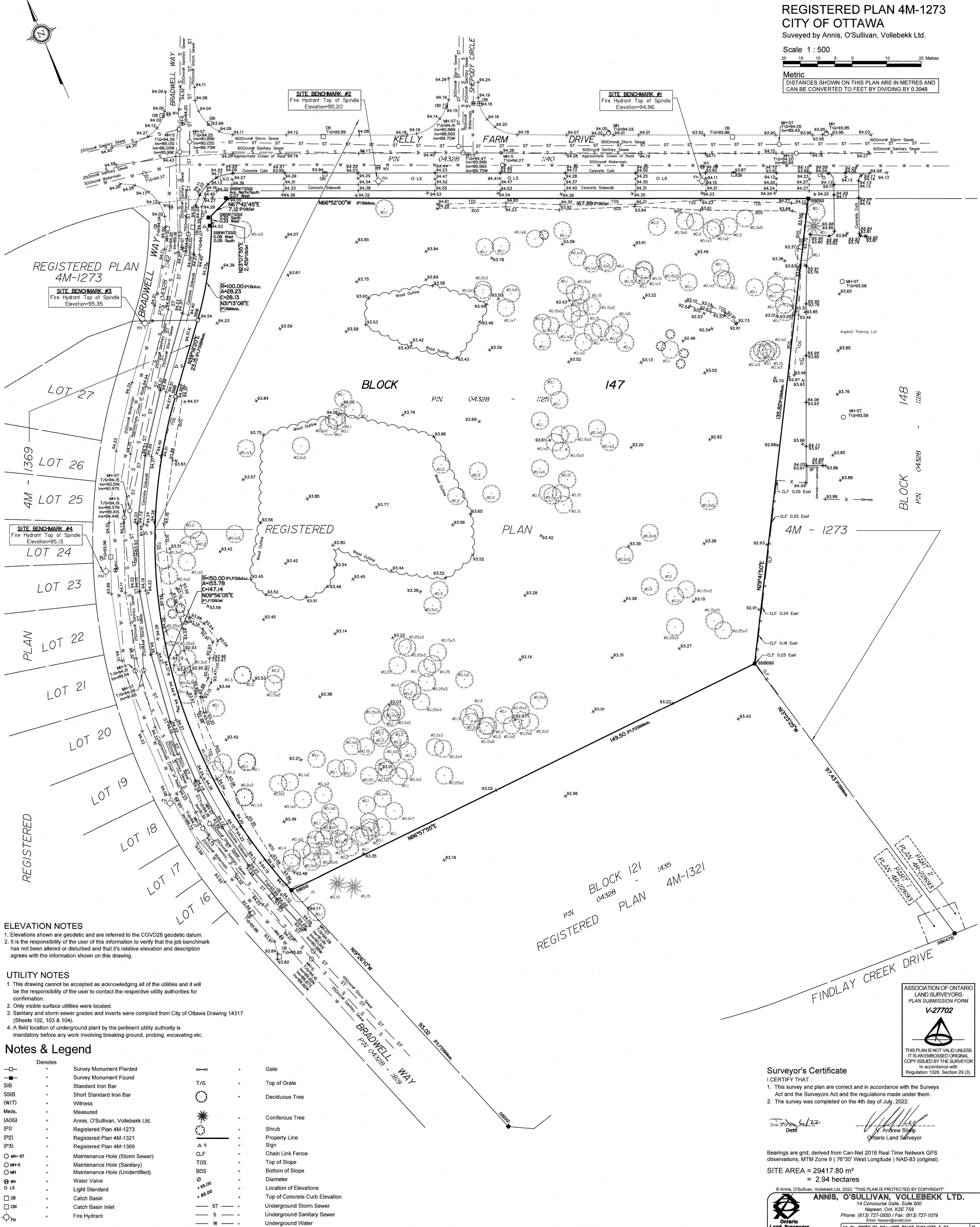
TOPOGRAPHICAL PLAN OF SURVEY OF
BLOCK 147
REGISTERED PLAN 4M-1273
CITY OF OTTAWA

Surveyed by Annis, O'Sullivan, Vollebek Ltd.

Scale 1 : 500

20 15 10 5 0 10 20 Metres

Metric
DISTANCES SHOWN ON THIS PLAN ARE IN METRES AND
CAN BE CONVERTED TO FEET BY DIVIDING BY 0.3048



ELEVATION NOTES
1. Elevations shown are geodetic and are referred to the CGVD28 geodetic datum.
2. It is the responsibility of the user of this information to verify that the job benchmark has not been altered or disturbed and that its relative elevation and description agrees with the information shown on this drawing.

UTILITY NOTES
1. This drawing cannot be accepted as acknowledging all of the utilities and it will be the responsibility of the user to contact the respective utility authorities for confirmation.
2. Only visible surface utilities were located.
3. Sanitary and storm sewer grades and inverts were compiled from City of Ottawa Drawing 14317 (Sheets 102, 103 & 104).
4. A field location of underground plant by the pertinent utility authority is mandatory before any work involving breaking ground, probing, excavating etc.

Notes & Legend

□	Denotes	Survey Monument Planted	□	Gate
■	Survey Monument Found	T/G	Top of Grate	
SIB	Standard Iron Bar	○	Deciduous Tree	
SSIB	Short Standard Iron Bar	●	Coniferous Tree	
(WIT)	Witness	▲	Shrub	
Meas.	Measured	—	Property Line	
(AOG)	Annis, O'Sullivan, Vollebek Ltd.	△	Sign	
(PI)	Registered Plan 4M-1273	CLF	Chain Link Fence	
(P2)	Registered Plan 4M-1321	TOS	Top of Slope	
(P3)	Registered Plan 4M-1322	BOS	Bottom of Slope	
○ MH-ST	Maintenance Hole (Storm Sewer)	∅	Diameter	
○ MH-S	Maintenance Hole (Sanitary)	+	Location of Elevations	
○ MH	Maintenance Hole (Unidentified)	—	Top of Concrete Curb Elevation	
○ W	Water Valve	—	Underground Storm Sewer	
○ LS	Light Standard	—	Underground Sanitary Sewer	
□ CB	Catch Basin	—	Underground Water	
□ CBI	Catch Basin Inlet			
○ FH	Fire Hydrant			

REGISTERED PLAN 4M-1321
BLOCK 121
REGISTERED PLAN 4M-1322
BLOCK 122

ASSOCIATION OF ONTARIO
LAND SURVEYORS
PLAN SUBMISSION FORM
V-27702
THIS PLAN IS NOT VALID UNLESS
IT IS AN EMBOSSED ORIGINAL
COPY ISSUED BY THE SURVEYOR
In accordance with
Regulation 1026, Section 29 (3)

Surveyor's Certificate
I CERTIFY THAT:
1. This survey and plan are correct and in accordance with the Surveys Act and the Surveyors Act and the regulations made under them.
2. The survey was completed on the 4th day of July, 2022.
Date: July 6/22
Andrew Shelp
Ontario Land Surveyor

Bearings are grid, derived from Can-Net 2016 Real Time Network GPS observations, MTM Zone 9 (76°30' West Longitude) NAD-83 (original).
SITE AREA = 29417.80 m²
= 2.94 hectares

© Annis, O'Sullivan, Vollebek Ltd., 2022. THIS PLAN IS PROTECTED BY COPYRIGHT.
ANNIS, O'SULLIVAN, VOLLEBEK LTD.
14 Concourse Gate, Suite 500
Nepean, Ont. K2E 7S6
Phone: (613) 727-0850 / Fax: (613) 727-1079
Email: Annis@anniso.com
Ontario Land Surveyors
Job No. 22650-22 Ottawa/CSB Bk147 PHM-1273 T.03