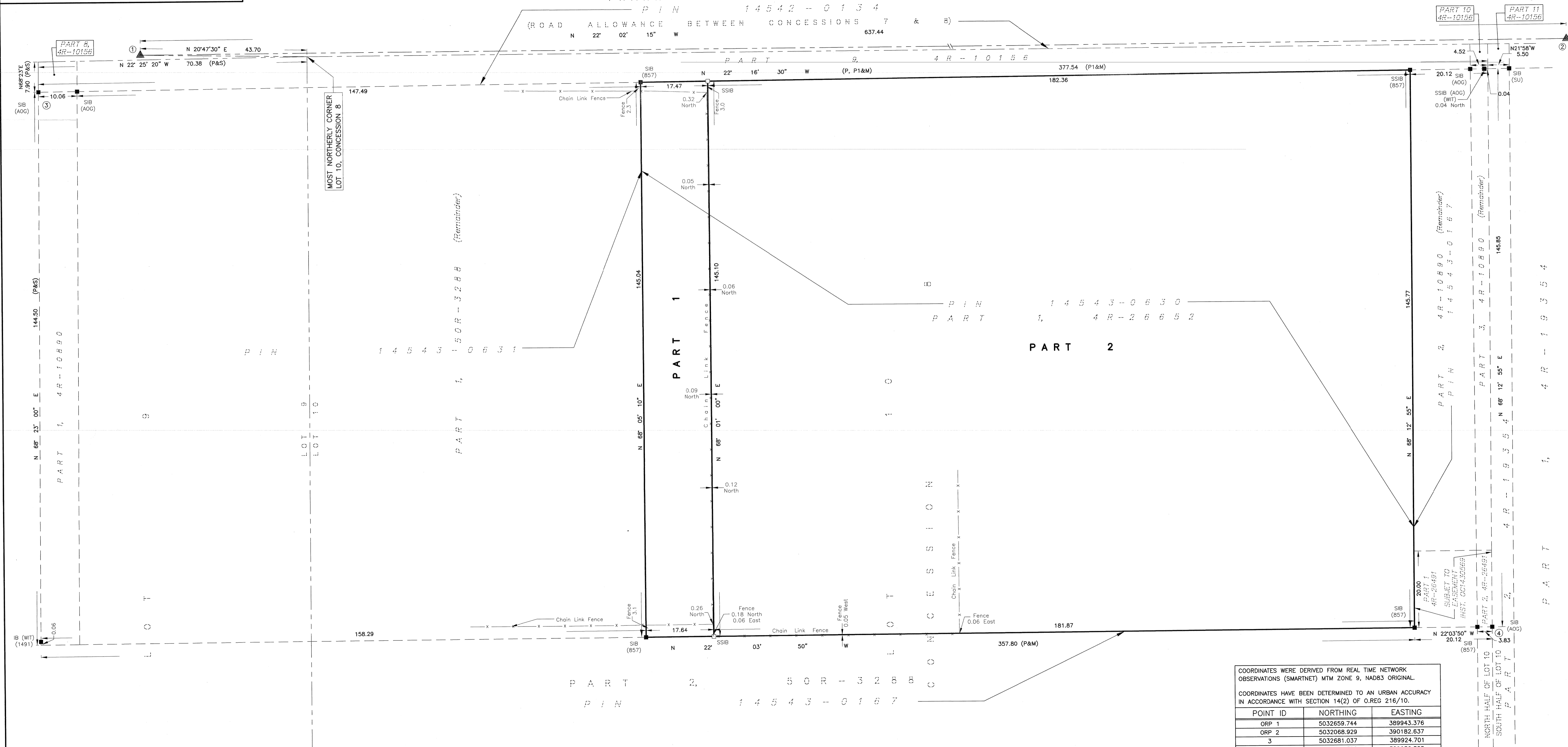


METRIC DISTANCES AND COORDINATES SHOWN ON THIS PLAN ARE IN METRES AND CAN BE CONVERTED TO FEET BY DIVIDING BY 0.3048



COORDINATES WERE DERIVED FROM REAL TIME NETWORK OBSERVATIONS (SMARTNET) MTM ZONE 9, NAD83 ORIGINAL.

COORDINATES HAVE BEEN DETERMINED TO AN URBAN ACCURACY IN ACCORDANCE WITH SECTION 14(2) OF O.REG 216/10.

POINT ID	NORTHING	EASTING
ORP 1	5032659.744	389943.376
ORP 2	5032068.929	390182.637
3	5032681.037	389924.701
4	5032277.598	389932.385

COORDINATES CANNOT IN THEMSELVES BE USED TO RE-ESTABLISH CORNERS OR BOUNDARIES SHOWN ON THIS PLAN.

I REQUIRE THIS PLAN TO BE DEPOSITED UNDER THE LAND TITLES ACT.

DATE JAN 3/2017

PLAN 4R-30029

RECEIVED AND DEPOSITED

DATE JAN 5 2017

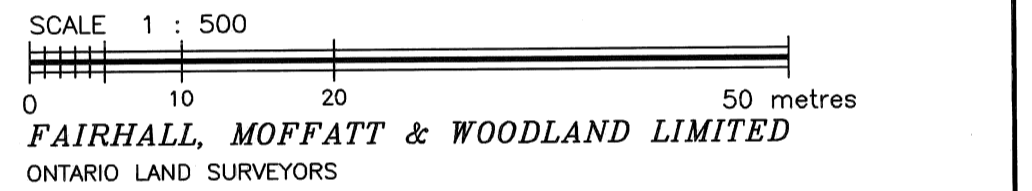
*M. Larocque*  
LAND REGISTRAR FOR THE LAND TITLES DIVISION OF OTTAWA - CARLETON (N° 4)

JOHN H. GUTRI, O.L.S.

SCHEDULE

PART	LOT	CONCESSION	PIN
1			
2	PART OF 10	8	ALL OF 14543-0630

PLAN OF SURVEY OF PART OF LOT 10 CONCESSION 8 GEOGRAPHIC TOWNSHIP OF CUMBERLAND Now CITY OF OTTAWA



- NOTES
- BEARINGS ARE GRID, DERIVED FROM OBSERVED REFERENCE POINTS ① AND ② BY REAL TIME NETWORK OBSERVATIONS AND ARE REFERRED TO THE CENTRAL MERIDIAN, 76°30'W LONGITUDE, MTM ZONE 9 (NAD83 ORIGINAL).
  - DISTANCES ARE GROUND AND CAN BE CONVERTED TO GRID BY MULTIPLYING BY THE COMBINED SCALE FACTOR 0.999981.

- LEGEND
- - SURVEY MONUMENT SET (1491) - DENIS DUTRISAC, O.L.S.
  - - SURVEY MONUMENT FOUND (SU) - SOURCE UNKNOWN
  - SSIB - SHORT STANDARD IRON BAR (WIT) - WITNESS
  - SIB - STANDARD IRON BAR (ORP) - OBSERVED REFERENCE POINT
  - IB - IRON BAR (PIN) - PROPERTY IDENTIFIER NUMBER
  - (P) - PLAN 4R-10890
  - (P1) - PLAN 4R-10156
  - (S) - SET
  - (M) - MEASURED
  - (AOG) - ANNIS, O'SULLIVAN & VOLLEBEKK LTD., O.L.S.
  - (857) - FAIRHALL, MOFFATT & WOODLAND LIMITED, O.L.S.
  - ▲ - PROJECT CONTROL MONUMENT

SURVEYOR'S CERTIFICATE

I CERTIFY THAT:

- THIS SURVEY AND PLAN ARE CORRECT AND IN ACCORDANCE WITH THE SURVEYS ACT, THE SURVEYORS ACT, THE LAND TITLES ACT AND THE REGULATIONS MADE UNDER THEM.
- THE SURVEY WAS COMPLETED ON NOVEMBER 11, 2016.

DATE JAN 3/2017

JOHN H. GUTRI  
ONTARIO LAND SURVEYOR

FAIRHALL  
MOFFATT &  
WOODLAND  
LIMITED  
OTTAWA

Job No. W 39000

E 389975, N 5032317

REFERENCE No. 111 (B) - 8 CUMBERLAND

100-600 TERRY FOX DRIVE, KANATA, ONTARIO K2L 4B6  
TEL: (613) 591-2680 FAX: (613) 591-1495  
www.fmw.on.ca