

METRIC
 DISTANCES AND COORDINATES SHOWN ON THIS PLAN ARE IN METRES
 AND CAN BE CONVERTED TO FEET BY DIVIDING BY 0.3048

COORDINATES WERE DERIVED FROM REAL TIME NETWORK
 OBSERVATIONS (SMARTNET) 3' MTM ZONE 9, NAD83 ORIGINAL.
 COORDINATES HAVE BEEN DETERMINED TO AN URBAN ACCURACY
 IN ACCORDANCE WITH SECTION 14(2) OF O.REG 216/10.

POINT ID	NORTHING	EASTING
ORP 1	5032659.744	389943.376
ORP 2	5032068.929	390182.637
3	5032681.037	389924.701
4	5032277.598	389932.385

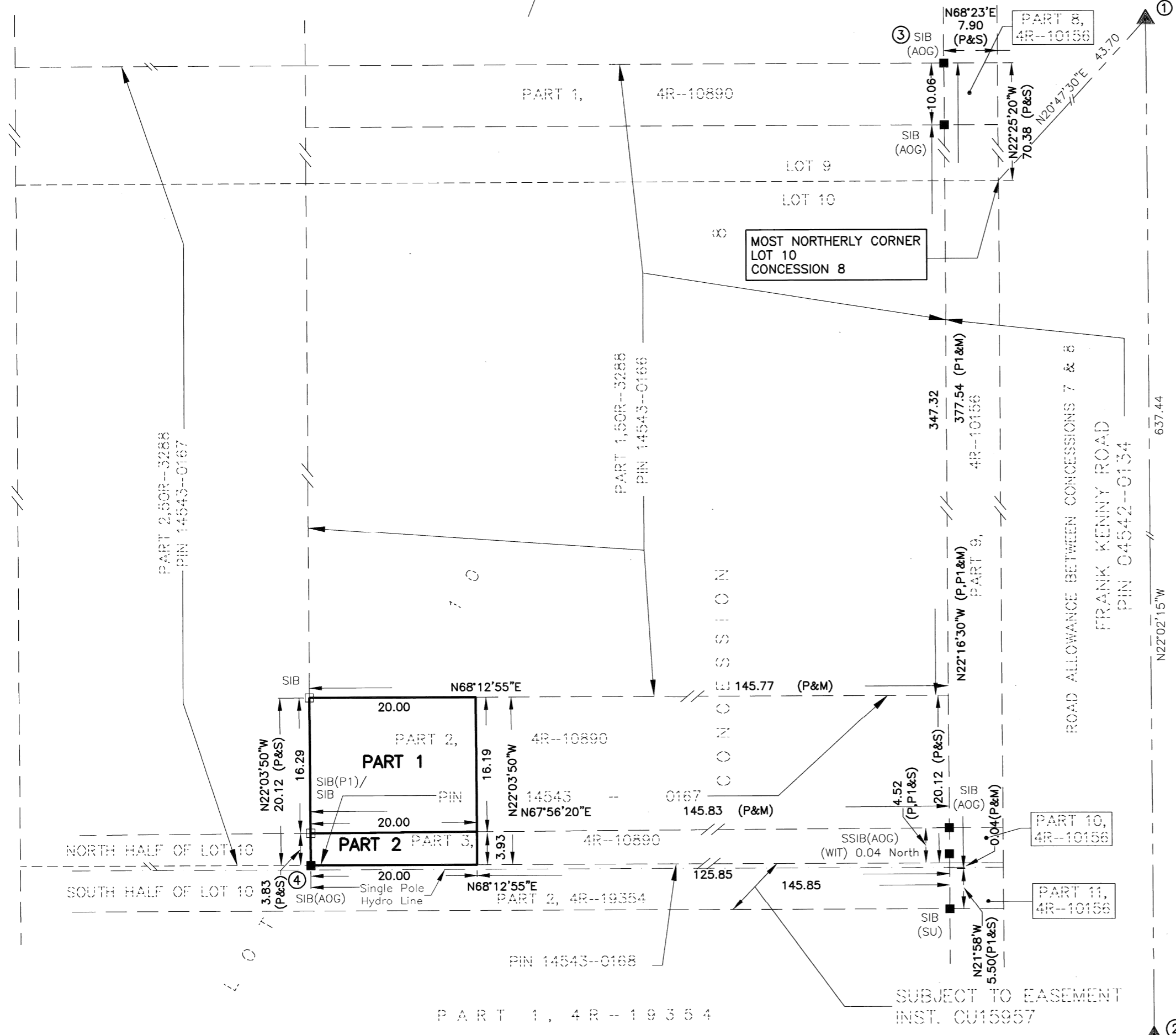
COORDINATES CANNOT IN THEMSELVES BE USED TO RE-ESTABLISH
 CORNERS OR BOUNDARIES SHOWN ON THIS PLAN.

SCHEDULE			
PART	PART OF LOT	CONCESSION	PART OF PIN
1	10	8	14543-0167
2			

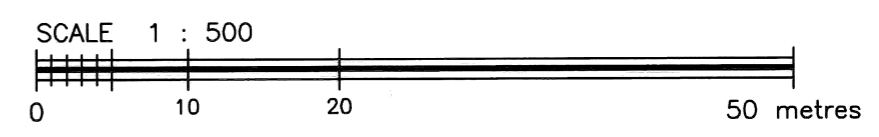
I REQUIRE THIS PLAN TO BE
 DEPOSITED UNDER THE
 LAND TITLES ACT.
 DATE SEPTEMBER 18, 2012

 DAVID W. WOODLAND, O.L.S.

PLAN 4R-26491
 RECEIVED AND DEPOSITED
 DATE Sept. 18/12
V. Robillard
 representative for
 LAND REGISTRAR FOR THE
 LAND TITLES DIVISION OF
 OTTAWA - CARLETON (N° 4)



PLAN OF SURVEY OF
 PART OF LOT 10
 CONCESSION 8
 GEOGRAPHIC TOWNSHIP OF CUMBERLAND
 NOW CITY OF OTTAWA



FAIRHALL, MOFFATT & WOODLAND LIMITED

ONTARIO LAND SURVEYORS

NOTES

- BEARINGS ARE GRID, DERIVED FROM OBSERVED REFERENCE POINTS ① AND ② BY REAL TIME NETWORK OBSERVATIONS AND ARE REFERRED TO THE CENTRAL MERIDIAN, 76°30'W LONGITUDE, ZONE 9 OF THE ONTARIO 3' MTM COORDINATE SYSTEM (NAD83 ORIGINAL).
- DISTANCES ARE GROUND AND CAN BE CONVERTED TO GRID BY MULTIPLYING BY THE COMBINED SCALE FACTOR 0.999981.

LEGEND

- - SURVEY MONUMENT SET
- - SURVEY MONUMENT FOUND
- ▲ - PROJECT CONTROL MONUMENT
- SIB - STANDARD IRON BAR
- (P) - PLAN 4R-10890
- (P1) - PLAN 4R-10156
- (S) - SET
- (M) - MEASURED
- (AOG) - ANNIS, O'SULLIVAN & VOLLEBEKK LTD., O.L.S.
- (SU) - SOURCE UNKNOWN
- (WIT) - WITNESS
- ORP - OBSERVED REFERENCE POINT
- PIN - PROPERTY IDENTIFIER NUMBER
- - OVERHEAD HYDRO LINE

SURVEYOR'S CERTIFICATE

I CERTIFY THAT:
 1. THIS SURVEY AND PLAN ARE CORRECT AND IN ACCORDANCE WITH THE SURVEYS ACT, THE SURVEYORS ACT, THE LAND TITLES ACT AND THE REGULATIONS MADE UNDER THEM.
 2. THE SURVEY WAS COMPLETED ON AUGUST 14, 2012.

SEPTEMBER 10, 2012
 DATE

 DAVID W. WOODLAND
 ONTARIO LAND SURVEYOR

**Fairhall
 Moffatt &
 Woodland**
 LIMITED
 ONTARIO LAND SURVEYORS
 OTTAWA
 Surveying and Land Information Services
 100-600 TERRY FOX DRIVE, KANATA, ONTARIO K2L 4B6
 TEL: (613) 591-2580 FAX: (613) 591-1495
 www.fmw.on.ca

JOB No.	Q 2 6 2 0 0
E 389975 , N 5032317	
REFERENCE No.	111-8 CUMBERLAND
S:\JOBS\Q26200\DWGS 2012-09-10	
RP262Q.DWG (KB)	