

WILBROD STREET
REGISTERED PLAN 6

PLAN OF SURVEY WITH
TOPOGRAPHY OF PART OF
LOTS 7 AND 8
REGISTERED PLAN 208649
CITY OF OTTAWA

McINTOSH PERRY SURVEYING INC.

SCALE 1 : 150

0 2.5 5.0 7.5 10.0 12.5 15 Metres
THE INTENDED PLOT SIZE OF THIS PLAN IS 914mm IN WIDTH BY 609mm IN HEIGHT WHEN PLOTTED AT A SCALE OF 1 : 150.

METRIC :
DISTANCES AND COORDINATES SHOWN ON THIS PLAN ARE IN METRES AND CAN BE CONVERTED TO FEET BY DIVIDING BY 0.3048.

SURVEYOR'S CERTIFICATE

- I CERTIFY THAT:
- THIS SURVEY AND PLAN ARE CORRECT AND IN ACCORDANCE WITH THE SURVEYS ACT, THE SURVEYORS ACT AND THE LAND TITLES ACT AND THE REGULATIONS MADE UNDER THEM.
 - THE SURVEY WAS COMPLETED ON THE 15TH DAY OF FEBRUARY, 2022.

MARCH 1, 2022
DATE

John Gauthier
JOHN GAUTHIER
ONTARIO LAND SURVEYOR

THIS PLAN OF SURVEY RELATES TO AOLS PLAN SUBMISSION FORM NUMBER V-20136.

LEGEND AND NOTES

SYMBOL	DENOTES	MONUMENT PLANTED
□	DENOTES	MONUMENT PLANTED
■	"	MONUMENT FOUND
SIB	"	STANDARD IRON BAR
SSIB	"	SHORT STANDARD IRON BAR
IB	"	IRON BAR
CC	"	CUT CROSS
CP	"	CONCRETE PIN
WT	"	WITNESS
ORP	"	OBSERVED REFERENCE POINT
TBM	"	TEMPORARY BENCHMARK
NTS	"	NOT TO SCALE
m	"	MEASURED
P1	"	SURVEYOR'S REAL PROPERTY REPORT BY FARLEY, SMITH & DENIS SURVEYING LTD. (FILE 556-17) DATED DEC. 19, 2017
P2	"	PLAN 4R-31293
P3	"	PLAN OF "LOT 9 PLAN 208649" BY H.R. FARLEY O.L.S. DATED OCT. 4, 1968
647	"	H.R. FARLEY O.L.S.
632	"	G.C. McCROSTIE O.L.S.
AOG	"	ANNIS O'SULLIVAN VOLLEBEKK LTD.
857	"	FAIRHALL MOFFATT & WOODLAND LTD.
SC	"	STANTEC GEOMATICS
CONC.	"	CONCRETE
BF	"	BOARD FENCE
WIF	"	WROUGHT IRON FENCE
∩	"	GATE
BB	"	BRICK BORDER
CRW	"	CONCRETE RETAINING WALL
SW	"	STONE WALL
DK	"	DECK
DS	"	DOORSILL ELEVATION
WS	"	BASEMENT WINDOW SILL ELEVATION
GM	"	GAS METER
TB	"	TERMINAL BOX (TELEPHONE & COMMUNICATIONS)
B&H	"	TELEPHONE & POWER UTILITY POLE
ohw	"	OVERHEAD WIRES
AN	"	ANCHOR
LS	"	LAMP STANDARD
CB	"	CATCH BASIN
MH SAN	"	MAINTENANCE HOLE - SANITARY
MH STM	"	MAINTENANCE HOLE - STORM
MH W	"	MAINTENANCE HOLE - WATER
T/G	"	TOP OF GRATE ELEVATION
WV	"	WATER VALVE

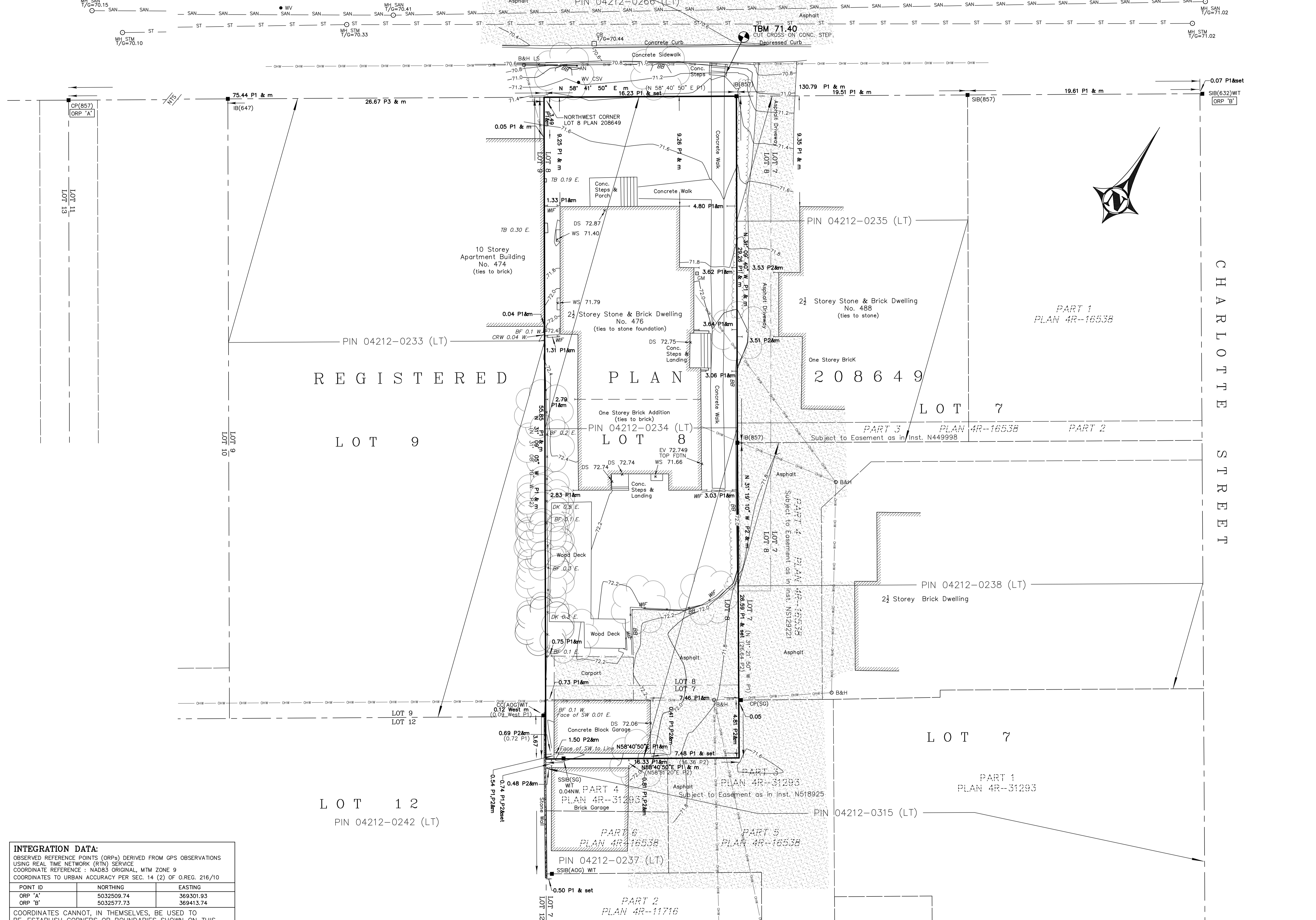
DISTANCES:
DISTANCES SHOWN ON THIS PLAN ARE GROUND DISTANCES AND CAN BE USED TO COMPUTE GRID DISTANCES BY MULTIPLYING BY A COMBINED SCALE FACTOR OF 0.999945.

BEARINGS:
BEARINGS ARE MTM GRID BEARINGS, DERIVED BY REAL TIME NETWORK GPS OBSERVATIONS ON OBSERVED REFERENCE POINTS 'A' AND 'B' SHOWN HEREON, AND ARE REFERRED TO THE NAD83 ORIGINAL MTM ZONE 9 COORDINATE SYSTEM.

ELEVATIONS:
ELEVATIONS ARE CANADA GEODETIC VERTICAL DATUM 1928:1978 ADJUSTMENT DERIVED BY REAL TIME NETWORK GPS OBSERVATIONS REFERENCED TO THE CANADA HT_2 GEOD MODEL.

THE CONTOUR INTERVAL IS 0.20 METRES.

CAUTION:
THE LOCATION AND CONFIGURATION OF UNDERGROUND SERVICES AND UTILITIES IS NOT WITHIN THE SCOPE OF THIS SURVEY. IT IS THE RESPONSIBILITY OF THE CONTRACTOR TO VERIFY THE CONFIGURATION AND LOCATION OF UNDERGROUND SERVICES AT THE SITE PRIOR TO CONSTRUCTION.



INTEGRATION DATA:

OBSERVED REFERENCE POINTS (ORP) DERIVED FROM GPS OBSERVATIONS USING REAL TIME NETWORK (RTN) SERVICE
COORDINATE REFERENCE : NAD83 ORIGINAL, MTM ZONE 9
COORDINATES TO URBAN ACCURACY PER SEC. 14 (2) OF O.REG. 216/10

POINT ID	NORTHING	EASTING
ORP 'A'	5032509.74	369301.93
ORP 'B'	5032577.73	369413.74

COORDINATES CANNOT, IN THEMSELVES, BE USED TO RE-ESTABLISH CORNERS OR BOUNDARIES SHOWN ON THIS PLAN.

JOB No. 22-3223	DRAWING 22-3223-476 Wilbrod St.-1
PREPARED FOR: MPCE	
McINTOSH PERRY SURVEYING INC.	
3240 Drummond Con. 5A, R.R. #7, Perth, ON K7H 3C9 Tel: 613-267-6524 Fax: 613-267-7992 www.mcintoshperry.com	
EXAMINED: JG	CAD: PC