

FLOOR PLAN LEGEND

ACS	ADULT CHANGE STATION
ADO	AUTO DOOR OPERATOR
BDP	BEDPAN DISINFECTOR
CD	CHEMICAL DISPENSING UNIT
CS1	ACROVYN CORNER GUARD
CG2	STAINLESS STEEL CORNER GUARD
CG3	ACROVYN CORNER GUARD
CG4	STAINLESS STEEL CORNER GUARD
CS4	CLINIC SERVICE SINK
EF	EXHAUST FAN
EW	EYE WASH
FD	FLOOR DRAIN
FEC1	FIRE EXTINGUISHER CABINET
FEC2	FIRE EXTINGUISHER
FLS	FLOOR SCRUBBER
FRPL1	ELECTRIC FIREPLACE
FRPL2	GAS FIREPLACE
GB1	GRAB BAR 1
GB2	GRAB BAR 2
GB3	GRAB BAR 3
GB4	GRAB BAR 4
GB5	GRAB BAR 5
HRLL	HANDRAIL (PROVIDE BLOCKING)
HS	HAND SANITIZER
HST	HOOK STRIP
LKR	LOCKER
MB	MEMORY BOX (RECESSED)
MBL	MANUAL BLINDS
MC	MEDICINE CABINET
MIR	MIRROR
MPH	MOP HOLDER
MRL-CH	MOBILE RESIDENT LIFT - CHARGER
MRL-FL	MOBILE RESIDENT LIFT - FLOOR LIFT
MRL-SS	MOBILE RESIDENT LIFT - SIT TO STAND

MS	MOP SINK
NC	NURSE CALL
PR/C	PRIVACY CURTAIN
PTD	PAPER TOWEL DISPENSER
PVP	PHOTO VOLTAIC PANEL
RD	ROOF DRAIN
RF	REFRIGERATOR
RWL	RAIN WATER LEADER
SD	SOAP DISPENSER
SHCH	SHAMPOO CHAIR
SHS	SHAMPOO SINK
SND	SANITARY NAPKIN DISPOSAL
SSS	STAINLESS STEEL SHELF
SVC	SPRINKLER VALVE CABINET (REFER TO MECH)
TD	TRENCH DRAIN
TR	TOWEL ROD
TPD	TOILET PAPER DISPENSER
TUB	RAPSODY TUB (TBD)
TV	TELEVISION
TV/BRK	TELEVISION BRACKET
VDM	VENDING MACHINE

FLOOR PLAN GENERAL NOTES

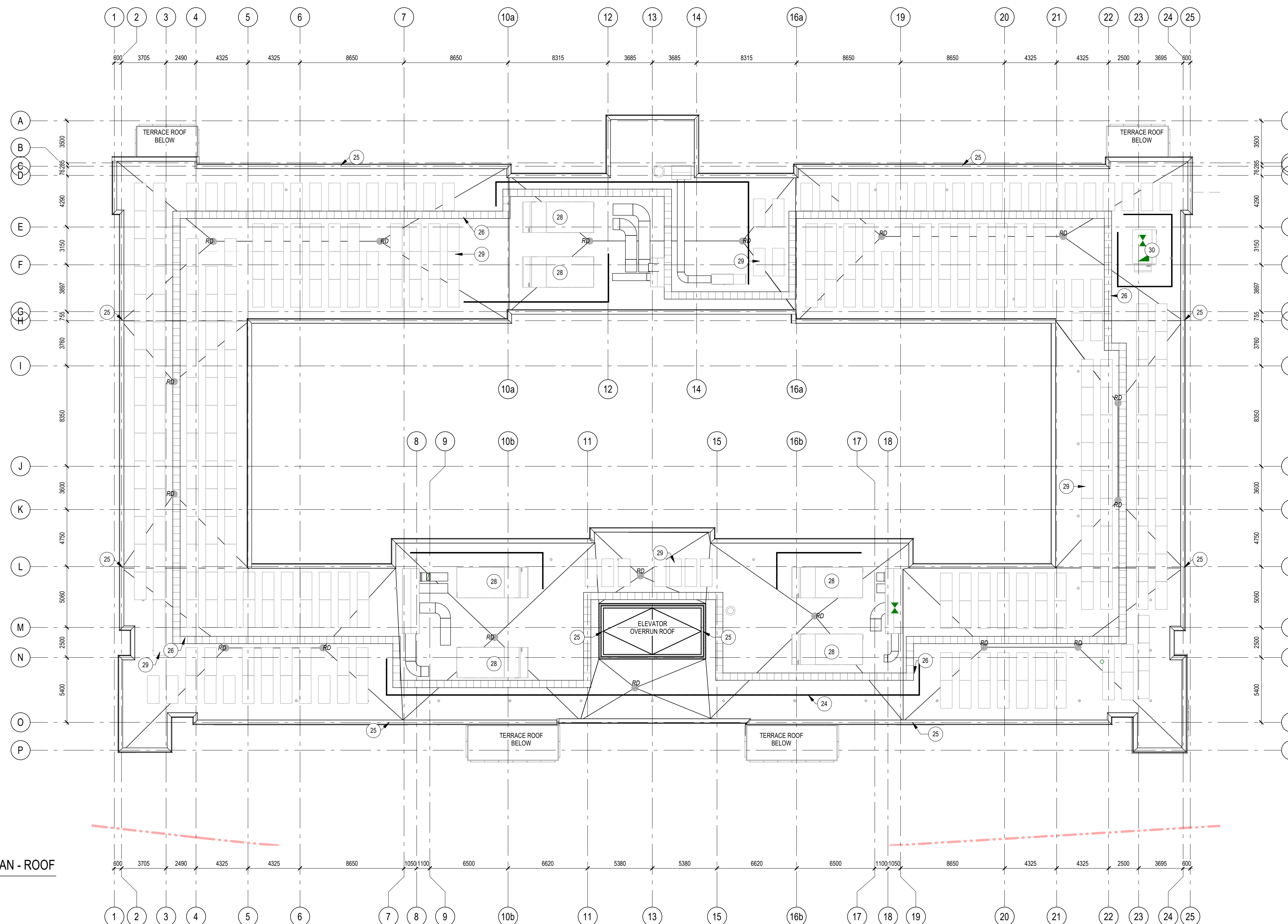
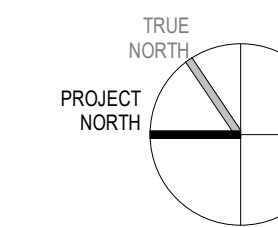
- ALL OVERALL CONSTRUCTION PLANS TO BE READ IN CONJUNCTION WITH ENLARGED PLANS.
- DIMENSIONS, UNLESS NOTED OTHERWISE, ARE MEASURED IN ORDER OF IMPORTANCE TO:
 - GRID LINES
 - FACE OF CONCRETE PARTITION
- CONTRACTOR SHALL PROTECT EXISTING FINISHES FROM DAMAGE DURING CONSTRUCTION. CONTRACTOR SHALL BE RESPONSIBLE TO REPAIR AND MAKE GOOD ANY SURFACES AFFECTED BY DEMOLITION AND/OR CONSTRUCTION.
- CONTRACTOR TO CORE SLAB FOR IN-SLAB RECESSED FLOOR BOXES. REFER TO ELEC. DRAWINGS FOR TYPE/QUANTITY. CONTRACTOR TO SCAN SLAB AS REQUIRED AND CONFIRM FINAL LOCATIONS FOR EACH FLOOR BOX WITH CONSULTANT FOR COORDINATION W/ FURNITURE PLACEMENT.
- CONTRACTOR SHALL PROVIDE PARTITION CHALK LINE LAYOUT ON SLAB FOR REVIEW AND APPROVAL BY DESIGNER PRIOR TO PROCEEDING WITH INSTALLATION OF TRACK AND STUDS.
- SOUND ATTENUATION BLANKETS SHALL BE INSTALLED CONTINUOUSLY BEHIND ALL POWER, VOICE, AND DATA OUTLETS AND OTHER DEVICES RECESSED INTO PARTITIONS.
- COORDINATE ALL BASE TYPES WITH GWB CONSTRUCTION. REFER TO ROOM FINISH SCHEDULE AND DRAWINGS.
- ALL PARTITIONS SCHEDULED TO RECEIVE RESILIENT BASE ARE TO BE COMPLETELY FINISHED SMOOTH TO THE SLAB.
- UNLESS NOTED OTHERWISE, DOOR LOCATIONS SHALL BE 100mm FROM FACE OF WALL TO OUTSIDE OF DOOR FRAME AND NOT LESS THAN 100mm.
- CONTRACTOR SHALL PATCH AND REPAIR ALL EXISTING GWB SURFACES AS REQUIRED TO MAKE GOOD AND MAKE READY TO RECEIVE NEW FINISHES.
- CONTRACTOR SHALL REFER TO ROOM FINISH SCHEDULE AND FINISH SPECIFICATIONS FOR ALL BASE TYPES AND HEIGHTS.
- WHERE FIRE SEPARATIONS OCCUR, EXTEND PARTITIONS TO UNDERSIDE OF SLAB. PACK ANY OPENINGS BETWEEN STRUCTURE OR ROOF AND PARTITIONS WITH FIRE STOPPING MATERIAL. PACK AROUND PENETRATIONS THROUGH FIRE SEPARATIONS WITH FIRE STOPPING MATERIAL.
- AT RECESSED PANELS AND EQUIPMENT IN FIRE SEPARATIONS, MAINTAIN THE CONTINUITY OF THE REQUIRED FIRE SEPARATIONS BEHIND THE EQUIPMENT.
- WRAP PLUMBING PIPES WITH NON-COMBUSTIBLE INSULATION TO MUFFLE SOUND TRANSMISSION.
- PROVIDE 400mm HIGH 26 GA. SHEET METAL BLOCKING OR 16mm PLYWOOD SHEATHING BLOCKING AT ALL LOCATIONS WHERE EQUIPMENT TO BE INSTALLED. BLOCKING HEIGHT TO SUIT EQUIPMENT.
- WHERE PARTITIONS OF VARYING THICKNESS ALIGN, STEP THE FLOOR AND CEILING TRACKS AS REQUIRED TO ENSURE A FLUSH FINISHED CONDITION ON THE EXPOSED FACE.
- REFER TO MILLWORK REFERENCE PLAN FOR MILLWORK DETAILS.
- FOR FIRE EXTINGUISHER CABINETS, REFER ALSO TO MECHANICAL DRAWINGS.
- FURRING WALLS AROUND COLUMNS AND PIPES TO BE BUILT AS TIGHT AS POSSIBLE UNLESS NOTED OTHERWISE.
- CONTRACTOR TO MARK OUT ALL THERMOSTAT AND SWITCHING LOCATIONS ON SITE FOR DESIGNER APPROVAL PRIOR TO INSTALLATION.
- TYPICAL RESIDENT ROOM DETAILS: UNLESS NOTED OTHERWISE, FURRING AND PARTITION TYPES, INTERIOR ELEVATION REFERENCES, PLAN DETAIL REFERENCES, AND DIMENSIONS, NOTES, ACCESSORIES AND ANYTHING ELSE NOTED IN TYPICAL DRAWINGS ON A7.01 ARE TYPICAL FOR ALL RESIDENT ROOMS ON ALL FLOORS.
- TYPICAL TUB AND SHOWER ROOM DETAILS: UNLESS NOTED OTHERWISE, FURRING AND PARTITION TYPES, INTERIOR ELEVATION REFERENCES, PLAN DETAIL REFERENCES, AND DIMENSIONS, NOTES, ACCESSORIES AND ANYTHING ELSE NOTED IN TYPICAL DRAWINGS ON A7.02 ARE TYPICAL FOR ALL TUB AND SHOWER ROOMS ON ALL FLOORS.
- WALL PARTITIONS, FURRING TYPES, DIMENSIONS, NOTES, TAGS, INTERIOR ELEVATION REFERENCES, AND OTHER INFORMATION INDICATED ON THE SECOND FLOOR ARE TYPICAL FOR FLOORS 2-3 UNLESS INDICATED OTHERWISE, OR AT AREAS SHOWING DIFFERENT LAYOUTS.
- ALL CLOSETS TO HAVE ROD AND SHELF UNLESS NOTED OTHERWISE.
- ALL CLOSETS TO BE 600mm CLEAR INSIDE UNLESS NOTED OTHERWISE.
- UNLESS OTHERWISE NOTED, ALWAYS PROVIDE F14 FURRING AT ENDS OF CONCRETE WALLS (WHERE CONCRETE WALL IS TO BE CLAD IN GWB).
- ANY NON-STRUCTURAL PARTITION WHICH ARE NOT LABELLED SHOULD BE ASSUMED TO BE THE FOLLOWING:
 - GENERATOR AND ENCLOSURE: REFER TO ELECTRICAL DRAWINGS
 - BENCH LOCATIONS: REFER TO LANDSCAPE DRAWINGS
 - CONDENSING UNITS BY FOOD SERVICES: PROVIDE CONCRETE PAD AS REQUIRED. REFER TO KITCHEN DRAWINGS
 - IN-GROUND GARBAGE BINS: REFER TO STRUCTURAL DRAWINGS. COORDINATE INSTALLATION AND CONCRETE PAD
 - TRANSFORMER ON CONCRETE PAD. REFER TO ELECTRICAL DRAWINGS
 - 150mm BOLLARD
 - MECHANICAL UNIT LOUVERED SCREENING, REFER TO DETAILS AND SPECIFICATIONS
 - ROOF EMERGENCY RELIEF SCUPPERS. REFER TO DETAILS AND SPECIFICATIONS
 - 610x610mm PRECAST CONCRETE ROOF PAVERS ON SUPPORTS
 - ROOFTOP UNITS, REFER TO MECHANICAL (TYP.)
 - PV PANELS ON BALLASTED SUPPORT STRUCTURE, REFER TO ELECTRICAL (TYP.)
 - AIR HANDLING UNIT, REFER TO MECHANICAL (TYP.)
 - STAINLESS STEEL CABINETS
 - HOSE BIB (REFER TO MECHANICAL DRAWINGS)

FLOOR PLAN SHEET NOTES 01

- MAIN ENTRANCE
- ANNUNCIATOR PANEL. REFER TO ELECTRICAL
- FIRE DEPARTMENT SIAMESE CONNECTION & SIGNAGE LOCATION. REFER TO MECHANICAL DRAWINGS
- GENERATOR AND ENCLOSURE. REFER TO ELECTRICAL DRAWINGS
- BENCH LOCATIONS. REFER TO LANDSCAPE DRAWINGS
- CONDENSING UNITS BY FOOD SERVICES. PROVIDE CONCRETE PAD AS REQUIRED. REFER TO KITCHEN DRAWINGS
- IN-GROUND GARBAGE BINS. REFER TO STRUCTURAL DRAWINGS. COORDINATE INSTALLATION AND CONCRETE PAD
- TRANSFORMER ON CONCRETE PAD. REFER TO ELECTRICAL DRAWINGS
- 150mm BOLLARD
- MECHANICAL UNIT LOUVERED SCREENING, REFER TO DETAILS AND SPECIFICATIONS
- ROOF EMERGENCY RELIEF SCUPPERS. REFER TO DETAILS AND SPECIFICATIONS
- 610x610mm PRECAST CONCRETE ROOF PAVERS ON SUPPORTS
- ROOFTOP UNITS, REFER TO MECHANICAL (TYP.)
- PV PANELS ON BALLASTED SUPPORT STRUCTURE, REFER TO ELECTRICAL (TYP.)
- AIR HANDLING UNIT, REFER TO MECHANICAL (TYP.)
- STAINLESS STEEL CABINETS
- HOSE BIB (REFER TO MECHANICAL DRAWINGS)

Montgomery Sisam Architects Inc.
197 Spadina Avenue, Toronto, Ontario M5T 2C8 montgomerysisam.com
Tel 416.364.8079 Fax 416.364.7723

MontgomerySisam



1 FLOOR PLAN - ROOF
A2.03 1:200

8 2022/08/19 RE-ISSUED FOR SITE PLAN CONTROL APPLICATION & ZONING BY-LAW AMENDMENT MSA
date: revision: by:
revisions:

All drawing and specifications are the property of the architect. The contractor shall verify all dimensions and information on site and report any discrepancy to architect before proceeding.

Arch Corp - Orleans

1161 OLD MONTREAL RD.
ORLEANS ON, K4A 3N6

ROOF PLAN

scale: As indicated
drawn by: Author
reviewed by: Checker
job number: 21024
plot date: 21-08-27
drawing number:

.A2.03