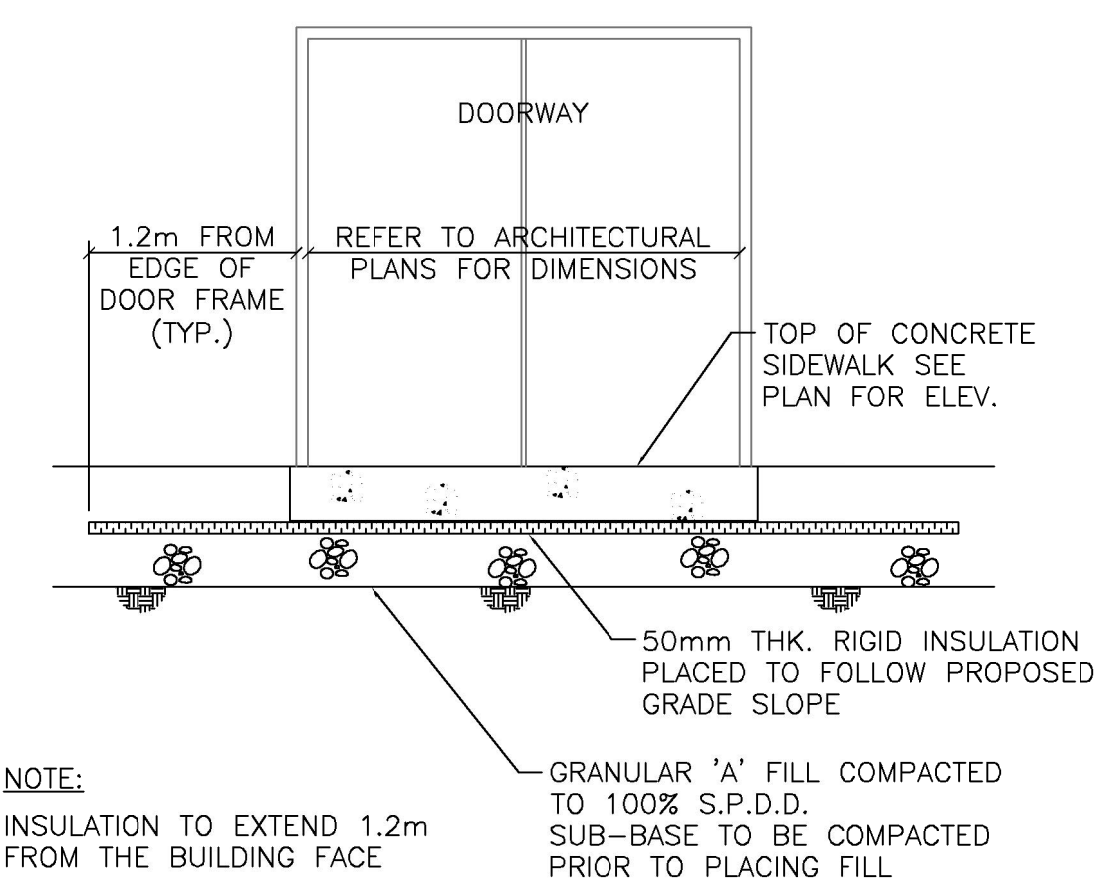


Conditions of Use

Verify elevations and/or dimensions on drawing prior to use. Report any discrepancies to Dillon Consulting Limited.

Do not scale dimensions from drawing.

Do not modify drawing, re-use, or use it for purposes other than those intended at the time of its preparation without prior written permission from Dillon Consulting Limited.



SIDEWALK AT DOORWAY DETAIL
NOT TO SCALE

THE FOLLOWING CITY OF OTTAWA STANDARD DETAILS SHALL APPLY TO THIS CONTRACT	
S5	STANDARD TRENCH TERMINOLOGY
S6	SINGLE TRENCH (SEWER AND SEWER SERVICES)
S10	SUPPORT DETAIL FOR EXISTING UTILITY CROSSING OR WATERMAIN TRENCH
S19	HEAVY DUTY "FISH" TYPE SQUARE CATCH BASIN COVER (MODIFIED OPSD-400.07)
S19.1	HEAVY DUTY "FISH" TYPE SQUARE CATCH BASIN COVER
S24.1	STANDARD CIRCULAR STORM MAINTENANCE HOLE COVER
S25	STANDARD CIRCULAR FRAME FOR MAINTENANCE HOLES
W22	THERMAL INSULATION FOR WATERMAINS IN SHALLOW TRENCHES
W25.2	WATERMAIN CROSSING OVER SEWER
W25.4	THRUST BLOCK DIMENSION TABLES FOR PVC AND DI PIPE 400mm AND UNDER
W25.6	TABLES OF RESTRAINED LENGTHS FOR PVC AND DI PIPE 400mm AND UNDER
W32.1	LINE METER CHAMBER
W40	PROTECTION FOR PVC WATERMAIN SYSTEM
W55	CONNECTION BETWEEN TRACER WIRE AND FITTING BOLT
R10	STANDARD TRENCH REINSTATEMENT IN PAVED SURFACE

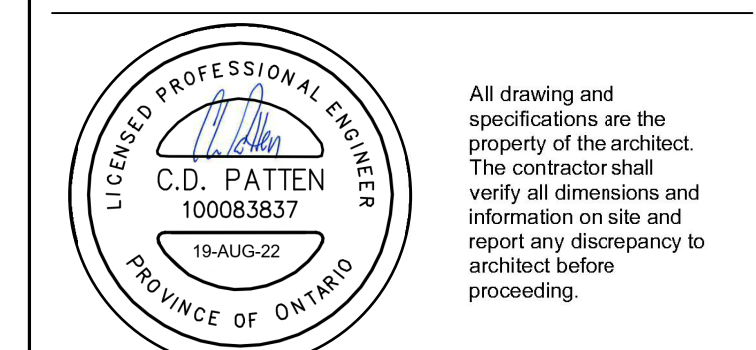
THE FOLLOWING ONTARIO PROVINCIAL STANDARD DETAILS SHALL APPLY TO THIS CONTRACT	
600.040	CONCRETE BARRIER CURB WITH STANDARD GUTTER
600.110	CONCRETE BARRIER CURB
701.010	PRECAST CONCRETE MAINTENANCE HOLE - 1200mm DIAMETER
705.010	PRECAST CONCRETE CATCH BASIN - 600x600mm
708.020	SUPPORT FOR PIPE AT CATCH BASIN OR MAINTENANCE HOLE
708.030	CATCH BASIN CONNECTION FOR FLEXIBLE MAIN PIPE SEWER
802.010	FLEXIBLE PIPE EMBEDMENT AND BACKFILL EARTH EXCAVATION
802.030	RIGID PIPE BEDDING, COVER, AND BACKFILL TYPE 1 OR 2 - EARTH EXCAVATION

GENERAL NOTES:

1. THE OWNER AND DILLON CONSULTING LIMITED DO NOT GUARANTEE THE ACCURACY OF THE UTILITIES SHOWN ON THE DRAWINGS. OTHER UTILITIES MAY BE PRESENT OR THE UTILITIES SHOWN MAY DIFFER IN SIZE OR LOCATION FROM THOSE SHOWN. THE CONTRACTOR SHALL NOTE THAT SERVICES FROM THE MAIN LINES ARE NOT SHOWN. THE CONTRACTOR ASSUMES FULL RESPONSIBILITY TO CONTACT THE VARIOUS UTILITY COMPANIES AND TO REPAIR ANY DAMAGE IT MAY CAUSE TO THESE UTILITIES OR TO OTHER THIRD PARTIES. THE CONTRACTOR AGREES TO INDEMNIFY THE OWNER AND DILLON CONSULTING LIMITED AGAINST ANY CLAIMS WHICH MAY ARISE FROM THE CONTRACTOR'S ACTIONS.
2. ALL WORKS SHALL COMPLY WITH THE CITY OF OTTAWA OR OPS STANDARDS.

ALL EXISTING INVERTS TO BE FIELD CHECKED PRIOR TO CONSTRUCTION

#	date:	revision:	by:
2	19/08/2021	RE-ISSUED FOR SITE PLAN CONTROL APPLICATION AND ZONING BY-LAW AMENDMENT	CDP_DS
1	12/02/2021	SPA / ZBA SUBMISSION	CDP



Arch Corp - Orleans

1161 OLD MONTREAL RD.
ORLEANS ON, K4A 3N6

MISCELLANEOUS DETAILS

scale: N.T.S.
drawn by: DS
reviewed by: CDP
job number: 21-2647
plot date: August 22, 2022
drawing number:

STD