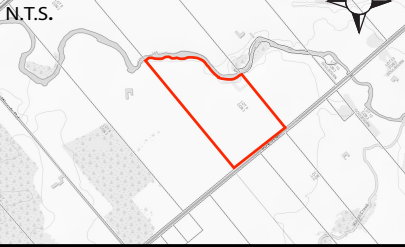


# Jabulani Site Plan

## Sketch

8005 Jock Trail  
 Lot 9, Concession 3  
 Geographic Township of  
 Goulbourn  
 CITY OF OTTAWA

### Key Map

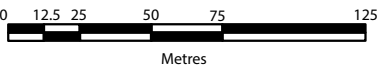


### Legend

- Subject Lands
- Vineyard Fields
- Watercourse
- RVCA Regulation Limit
- Existing Trees

### Notes

1. Locations for the RVCA Regulation Limit derived from the RVCAOnline GIS mapping. Their locations on the sketch are approximate.
2. Boundary and dimensions for the subject property falling in Lot 9 Concession 3 derived from Plan 4R-18665 completed H.A. Ken Shipman Surveying LTD. in July of 2003. All other dimensions are approximate based on GIS mapping.
3. Owners: Tom and Janet Moul  
 Structural Engineer: John MacIntyre  
 Mechanical Engineer: Terry Vivyurka  
 Geotechnical Engineer: Craig Houle  
 Architect: Swapan Jeet Kaur

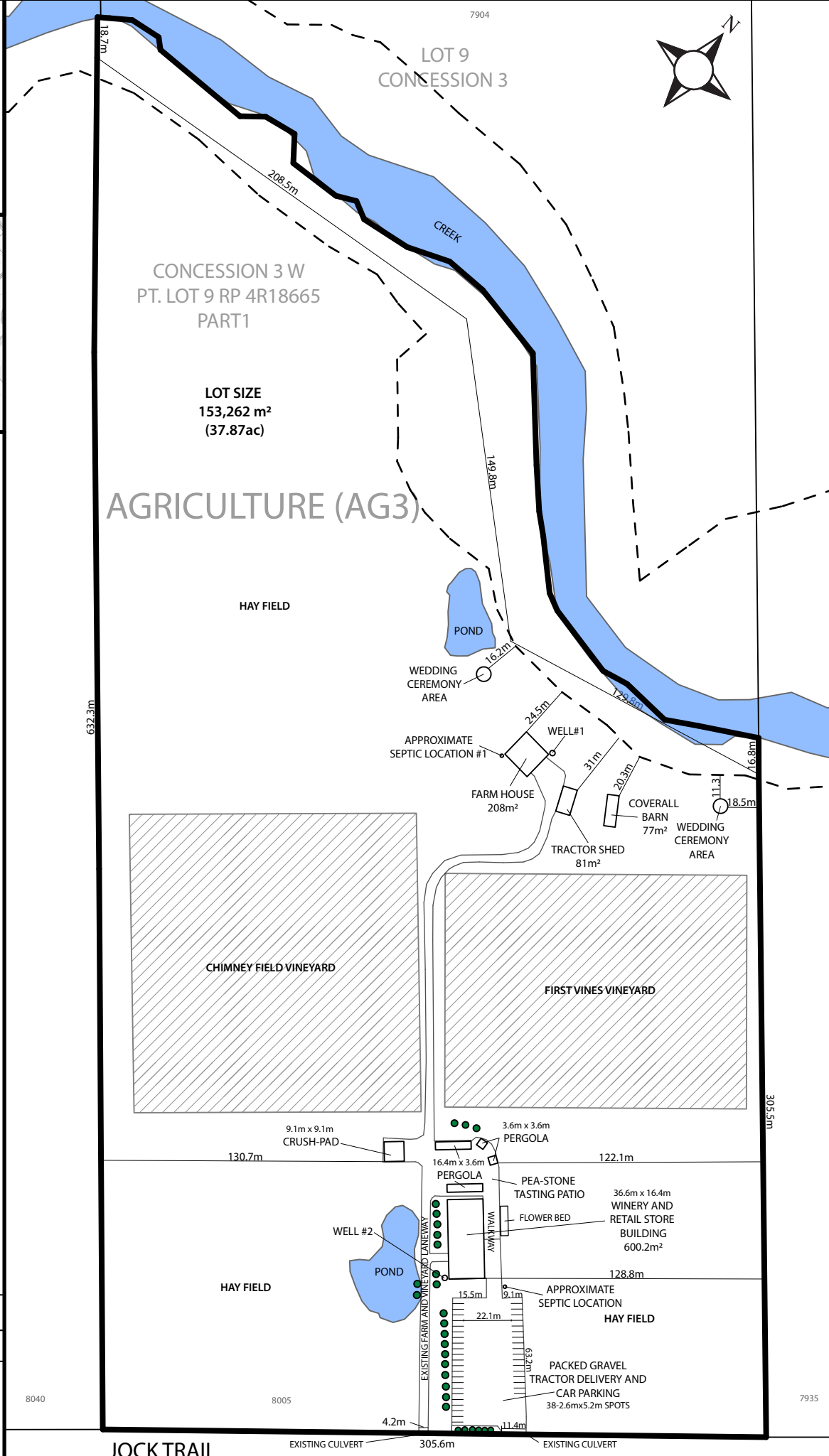


Version Date: August 31, 2022

File No. 22-077

Drawn By: TG

**ZanderPlan**  
 Your rural land planning experts  
 40 Sunset Boulevard, Perth, ON K7H 2Y4 613-264-9600



JOCK TRAIL

EXISTING CULVERT

EXISTING CULVERT