

- LEGEND**
- 95.50 — PROPERTY LINE
 - 95.10 — PROPOSED ELEVATION
 - 95.28 — EXISTING ELEVATION
 - 94.65(S) — PROPOSED SWALE ELEVATION
 - 95.20(T/C) — PROPOSED TOP OF CURB ELEVATION
 - 95.50 — PROPOSED TERRACE ELEVATION
 - 2.0% — GRADE AND DIRECTION
 - 3:1 — MAXIMUM 3:1 SIDESLOPE
 - — EMERGENCY OVERLAND FLOW ROUTE
 - SAN MH 201 — PROPOSED SANITARY MANHOLE
 - ▼ — PROPOSED BUILDING ENTRANCE
 - — PROPOSED SILT FENCING (OPSD 219.110)
 - CBMH 104 — PROPOSED CATCHBASIN MANHOLE
 - STM MH 103 — PROPOSED STORM MANHOLE
 - CB 03 — PROPOSED CATCHBASIN
 - HYD 2 — PROPOSED HYDRANT AND VALVE
 - DC — PROPOSED BARRIER CURB (15cm CURB HEIGHT)
 - MC — PROPOSED MOUNTABLE CURB (5cm CURB HEIGHT)
 - DMC — PROPOSED MOUNTABLE CURB (6cm CURB HEIGHT)
 - — RESTRICTOR PIPE / INLET CONTROL DEVICE
 - H.P. — PROPOSED HIGH POINT
 - DS — PROPOSED DOWNSPOUT LOCATION
 - FFE=95.50 — PROPOSED FINISHED FLOOR ELEVATION
 - USF=93.65 — PROPOSED UNDERSIDE OF FOOTING ELEVATION
 - — PROPOSED SITE LIGHTING POLE (REFER TO ELEC)
 - M M — PROPOSED MUD MAT / CONSTRUCTION ENTRANCE
 - — APPROXIMATE PONDING LIMITS
 - 1.5 YR —
 - 1:100 YR —
 - — EXISTING CONCRETE CURB
 - SANMH — EXISTING SANITARY MANHOLE
 - CBMH — EXISTING CATCHBASIN / MANHOLE
 - STMH — EXISTING STORM MANHOLE
 - CB — EXISTING CATCHBASIN
 - — EXISTING TREES / VEGETATION
 - EX UP — EXISTING UTILITY POLE / CW GUY WIRES
 - — EXISTING FENCE
 - — EXISTING LIGHT STANDARD

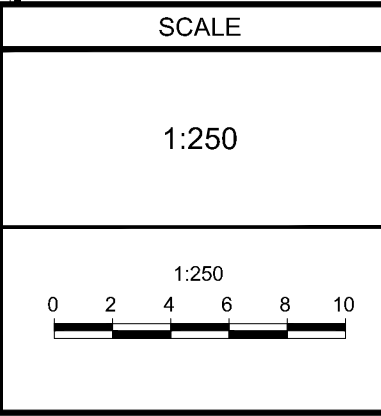
BENCHMARK INFO:
 CUT CROSS LOCATED ON THE TOP OF THE EXISTING CONCRETE HEADWALL NEAR THE WEST LIMIT OF THE MUNICIPAL STORM SEWER OUTFALL TO THE CARP RIVER. GEODETIC ELEVATION = 93.77m.
 ALL ELEVATIONS ARE REFERRED TO THE CGVD28:78 GEODETIC DATUM, DERIVED FROM VERTICAL CONTROL MONUMENT NO. 00119883075 HAVING A PUBLISHED ELEVATION OF 90.912 METRES. BENCHMARKS ARE GRID, DERIVED FROM THE OLS FIELD OBSERVATIONS USING REAL TIME NETWORK (RTN) OBSERVATIONS AND ARE REFERRED TO THE CENTRAL MERIDIAN OF MTM ZONE 9, NAD-83 (CSRS)(2010.0).
 THE EXISTING GRADES SHOWN ON THE PLANS ARE TAKEN DIRECTLY FROM TOPOGRAPHICAL SURVEY PLAN (Ref. # 21-10-029-00), PREPARED BY J.D. BARNES LIMITED COMPLETED ON APRIL 8, 2021.
 SURROUNDING BACKGROUND TOPO INFORMATION BEYOND THE LIMITS OF THE SITE SURVEY ARE SHOWN FROM CITY OF OTTAWA 1:2000 MAPPING FOR CONTEXT ONLY.

REFER TO PLAN 121326-GR2 FOR CONTINUATION OF PROPOSED SITE GRADING
 REFER TO PLAN 121326-NDT1 AND 121326-NDT2 FOR CIVIL NOTES, DETAILS, TABLES AND ESC MEASURES

NOTE:
 THE POSITION OF ALL POLE LINES, CONDUITS, WATERMAINS, SEWERS AND OTHER UNDERGROUND AND OVERGROUND UTILITIES AND STRUCTURES IS NOT NECESSARILY SHOWN ON THE CONTRACT DRAWINGS, AND WHERE SHOWN, THE ACCURACY OF THE POSITION OF SUCH UTILITIES AND STRUCTURES IS NOT GUARANTEED. BEFORE STARTING WORK, DETERMINE THE EXACT LOCATION OF ALL SUCH UTILITIES AND STRUCTURES AND ASSUME ALL LIABILITY FOR DAMAGE TO THEM.

OWNER INFORMATION
 U-HAUL CANADA
 3636 INNES ROAD
 OTTAWA, ONTARIO, K1C 1T1
 DAVID POLLOCK
 PHONE: 1-602-263-6555
 david_pollock@uhaul.com

No.	REVISION	DATE	BY
2	REVISED PER CITY COMMENTS	AUG 30/22	FST
1	ISSUED FOR SITE PLAN APPROVAL	MAY 20/22	FST



FOR REVIEW ONLY

DESIGN	SM / FST
CHECKED	FST
DRAWN	SM
CHECKED	SM / FST
APPROVED	FST

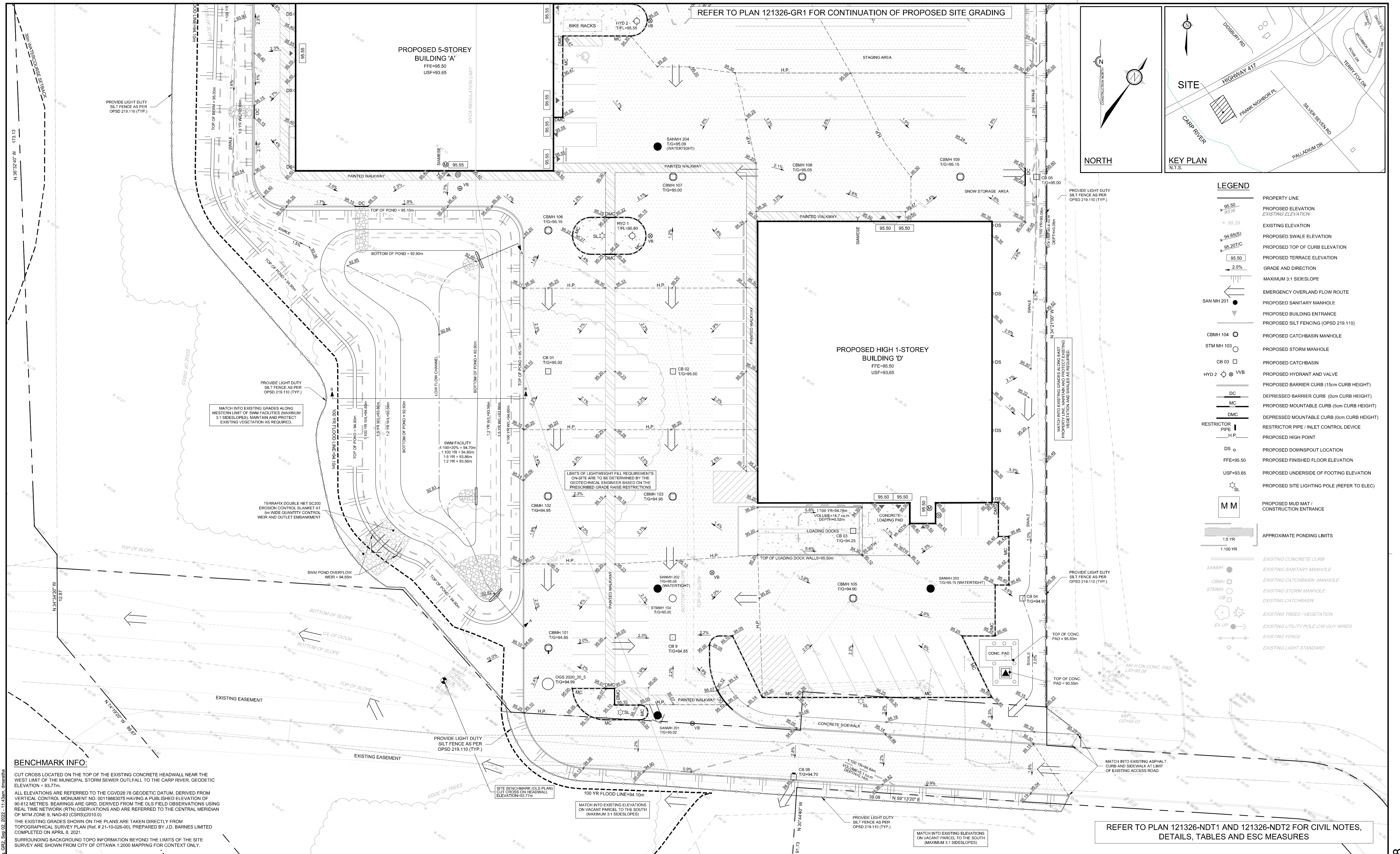
NOVATECH
 Engineers, Planners & Landscape Architects
 Suite 200, 240 Michael Cowpland Drive
 Ottawa, Ontario, Canada K2M 1P6
 Telephone: (613) 254-9643
 Facsimile: (613) 254-5867
 Website: www.novatech-eng.com

LOCATION
 CITY OF OTTAWA
 30 FRANK NIGHBOR PLACE: U-HAUL SITE

DRAWING NAME
GRADING AND EROSION & SEDIMENT CONTROL PLAN

PROJECT No. 121326
 REV # 2
 DRAWING No. 121326-GR1
 Plan #18789

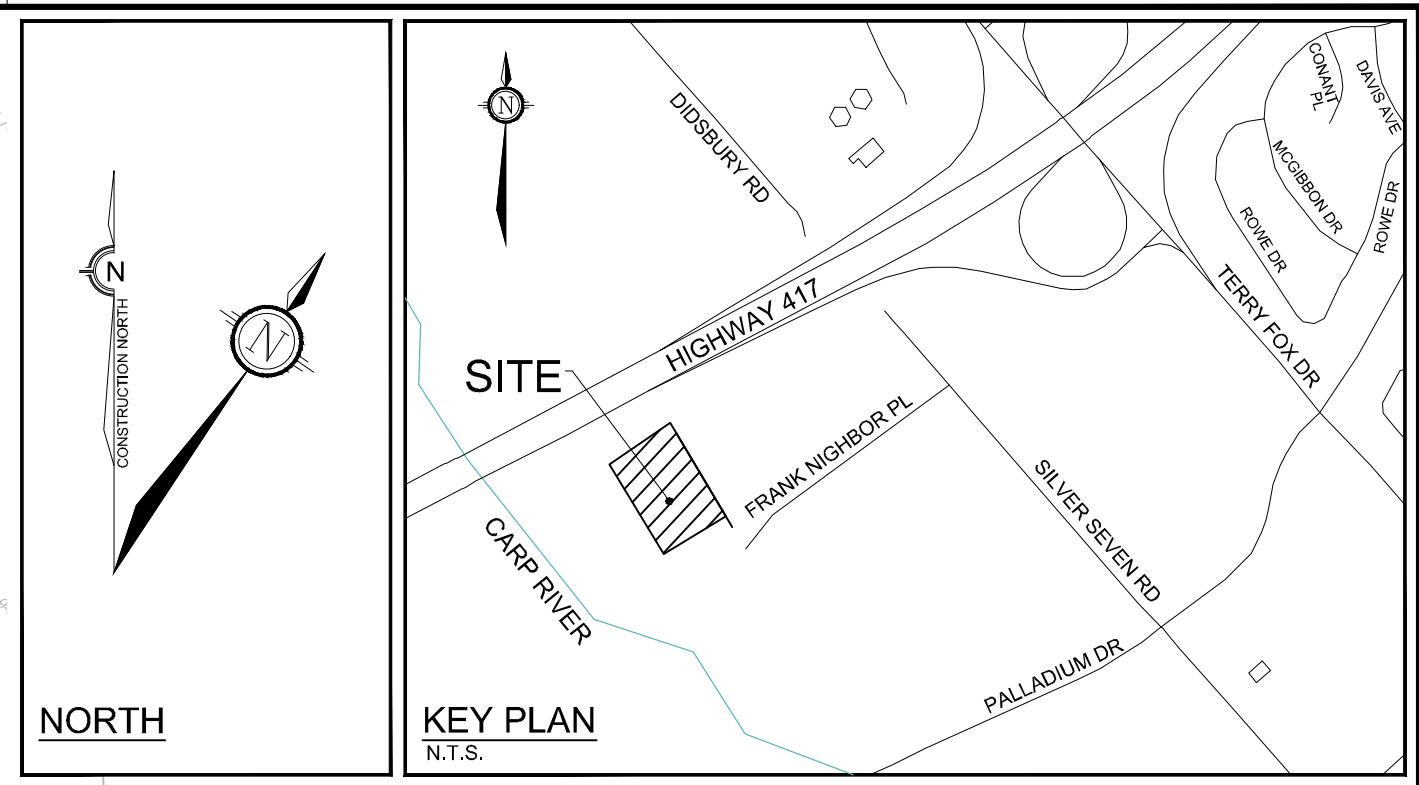
M:\2021\121326\CAD\Design\121326-GR.dwg GR1 Sep 02, 2022 - 11:43am dmanarba



REFER TO PLAN 121326-GR1 FOR CONTINUATION OF PROPOSED SITE GRADING

PROPOSED 5-STORY BUILDING 'A'
 FFE=95.50
 USF=93.65

PROPOSED HIGH 1-STORY BUILDING 'D'
 FFE=95.50
 USF=93.65



- LEGEND**
- 95.50 — PROPOSED ELEVATION
 - 95.16 — EXISTING ELEVATION
 - 95.28 — EXISTING ELEVATION
 - 94.65(S) — PROPOSED SWALE ELEVATION
 - 95.20(T/C) — PROPOSED TOP OF CURB ELEVATION
 - 95.50 — PROPOSED TERRACE ELEVATION
 - 2.0% — GRADE AND DIRECTION
 - 3:1 — MAXIMUM 3:1 SIDESLOPE
 - — EMERGENCY OVERLAND FLOW ROUTE
 - SAN MH 201 — PROPOSED SANITARY MANHOLE
 - — PROPOSED BUILDING ENTRANCE
 - — PROPOSED SILT FENCING (OPSD 219.110)
 - CBMH 104 — PROPOSED CATCHBASIN MANHOLE
 - STM MH 103 — PROPOSED STORM MANHOLE
 - CB 03 — PROPOSED CATCHBASIN
 - — PROPOSED HYDRANT AND VALVE
 - DC — PROPOSED BARRIER CURB (15cm CURB HEIGHT)
 - MC — DEPRESSED BARRIER CURB (0cm CURB HEIGHT)
 - DMC — PROPOSED MOUNTABLE CURB (5cm CURB HEIGHT)
 - — DEPRESSED MOUNTABLE CURB (0cm CURB HEIGHT)
 - — RESTRICTOR PIPE / INLET CONTROL DEVICE
 - H.P. — PROPOSED HIGH POINT
 - DS — PROPOSED DOWNSPOUT LOCATION
 - FFE=95.50 — PROPOSED FINISHED FLOOR ELEVATION
 - USF=93.65 — PROPOSED UNDERSIDE OF FOOTING ELEVATION
 - SL — PROPOSED SITE LIGHTING POLE (REFER TO ELEC)
 - MM — PROPOSED MUD MAT / CONSTRUCTION ENTRANCE
 - — APPROXIMATE PONDING LIMITS
 - 1.5 YR —
 - 1:100 YR —
 - SANMH — EXISTING CONCRETE CURB
 - — EXISTING SANITARY MANHOLE
 - — EXISTING CATCHBASIN / MANHOLE
 - — EXISTING STORM MANHOLE
 - — EXISTING CATCHBASIN
 - — EXISTING TREES / VEGETATION
 - — EXISTING UTILITY POLE / C/W GUY WIRES
 - — EXISTING FENCE
 - — EXISTING LIGHT STANDARD

BENCHMARK INFO:
 CUT CROSS LOCATED ON THE TOP OF THE EXISTING CONCRETE HEADWALL NEAR THE WEST LIMIT OF THE MUNICIPAL STORM SEWER OUTFALL TO THE CARP RIVER, GEODETIC ELEVATION = 93.77m.
 ALL ELEVATIONS ARE REFERRED TO THE CGVD2878 GEODETIC DATUM, DERIVED FROM VERTICAL CONTROL MONUMENT NO. 0011983075 HAVING A PUBLISHED ELEVATION OF 90.612 METRES. BEARINGS ARE GRID, DERIVED FROM THE OLS FIELD OBSERVATIONS USING REAL TIME NETWORK (RTN) OBSERVATIONS AND ARE REFERRED TO THE CENTRAL MERIDIAN OF NITM ZONE 8, NAD83 (CSRS) (2010.0).
 THE EXISTING GRADES SHOWN ON THE PLANS ARE TAKEN DIRECTLY FROM TOPOGRAPHICAL SURVEY PLAN (Ref. # 21-10-026-00), PREPARED BY J.D. BARNES LIMITED COMPLETED ON APRIL 8, 2021.
 SURROUNDING BACKGROUND TOPO INFORMATION BEYOND THE LIMITS OF THE SITE SURVEY ARE SHOWN FROM CITY OF OTTAWA 1:2000 MAPPING FOR CONTEXT ONLY.

REFER TO PLAN 121326-NDT1 AND 121326-NDT2 FOR CIVIL NOTES, DETAILS, TABLES AND ESC MEASURES

NOTE:
 THE POSITION OF ALL POLE LINES, CONDUITS, WATERMANS, SEWERS AND OTHER UNDERGROUND AND OVERGROUND UTILITIES AND STRUCTURES IS NOT NECESSARILY SHOWN ON THE CONTRACT DRAWINGS, AND WHERE SHOWN, THE ACCURACY OF THE POSITION OF SUCH UTILITIES AND STRUCTURES IS NOT GUARANTEED. BEFORE STARTING WORK, DETERMINE THE EXACT LOCATION OF ALL SUCH UTILITIES AND STRUCTURES AND ASSUME ALL LIABILITY FOR DAMAGE TO THEM.

OWNER INFORMATION
 U-HAUL CANADA
 3636 INNES ROAD
 OTTAWA, ONTARIO, K1C 1T1
 DAVID POLLOCK
 PHONE: 1-602-263-6555
 david_pollock@uhaul.com

No.	REVISION	DATE	BY
2	REVISED PER CITY COMMENTS	AUG 30/22	FST
1	ISSUED FOR SITE PLAN APPROVAL	MAY 20/22	FST

SCALE
 1:250

0 2 4 6 8 10

FOR REVIEW ONLY

PROFESSIONAL ENGINEER
 M.J. HREHORAK
 10021256
 AUG 30/22
 PROVINCE OF ONTARIO

PROFESSIONAL ENGINEER
 F.S. THAUETTE
 100041399
 AUG 30, 2022
 PROVINCE OF ONTARIO

NOVATECH
 Engineers, Planners & Landscape Architects
 Suite 200, 240 Michael Cowpland Drive
 Ottawa, Ontario, Canada K2M 1P6
 Telephone: (613) 254-9643
 Facsimile: (613) 254-5867
 Website: www.novatech-eng.com

LOCATION
 CITY OF OTTAWA
 30 FRANK NIGHBOR PLACE: U-HAUL SITE

DRAWING NAME
 GRADING AND EROSION & SEDIMENT CONTROL PLAN

PROJECT No. 121326
REV # 2
DRAWING No. 121326-GR2
Plan #18789

M:\2021\121326\CAD\Design\121326-GR.dwg GR2 Sep 02, 2022 11:43am dmantha