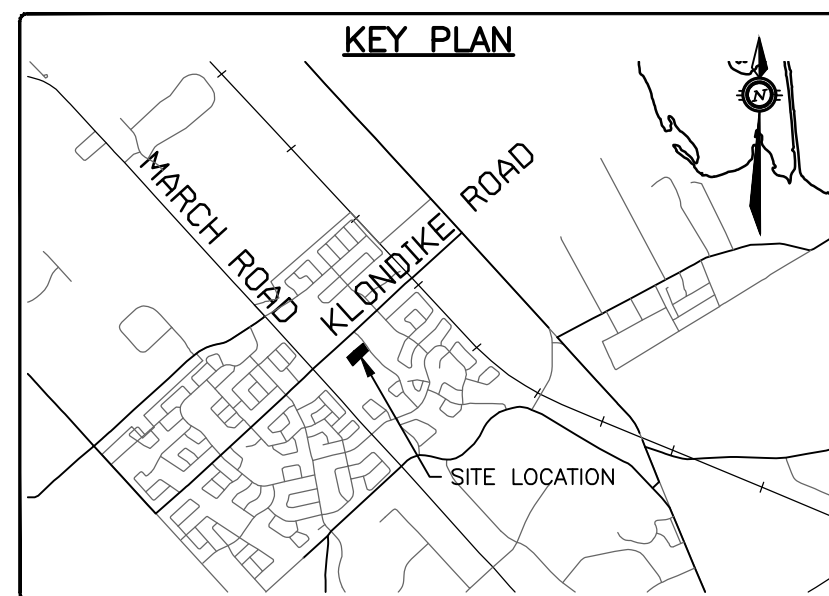
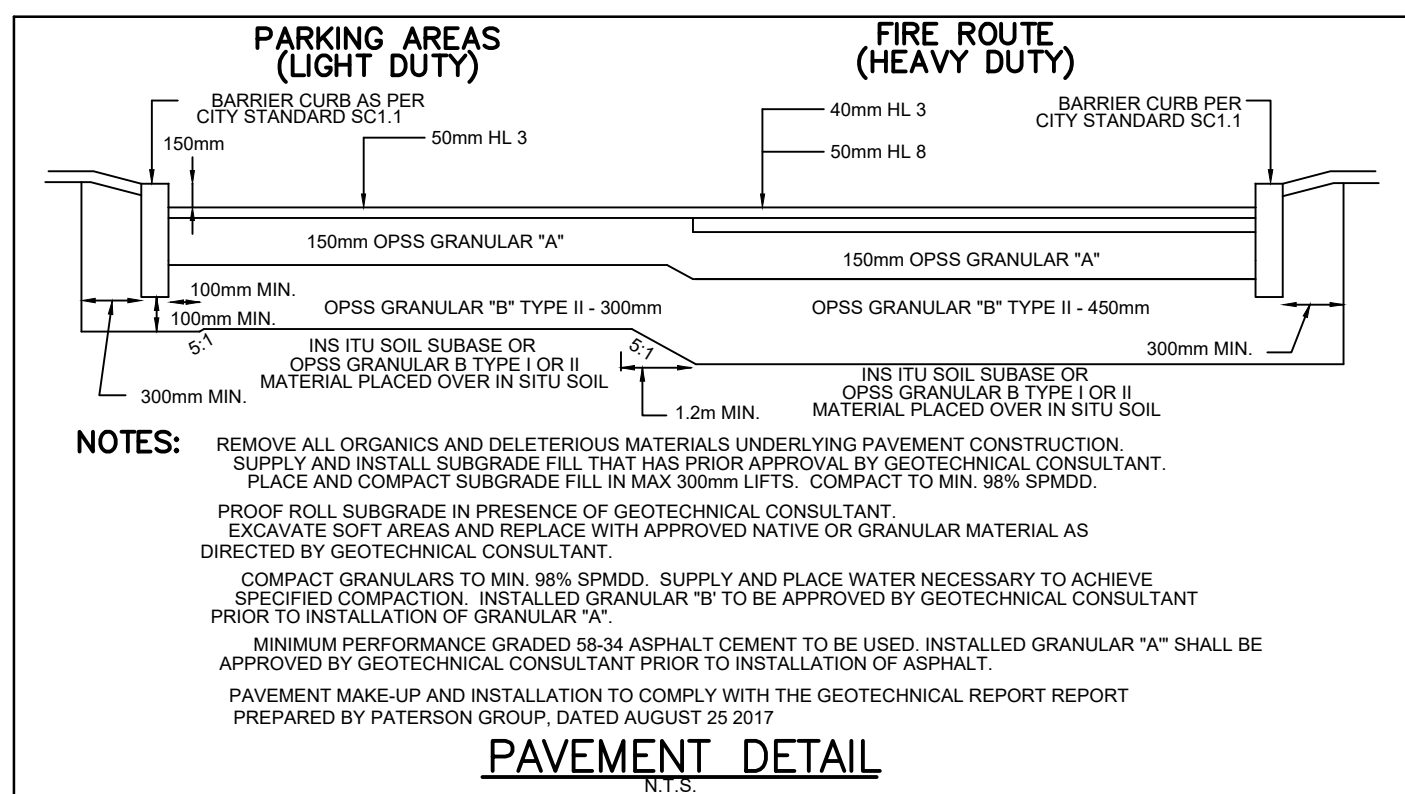


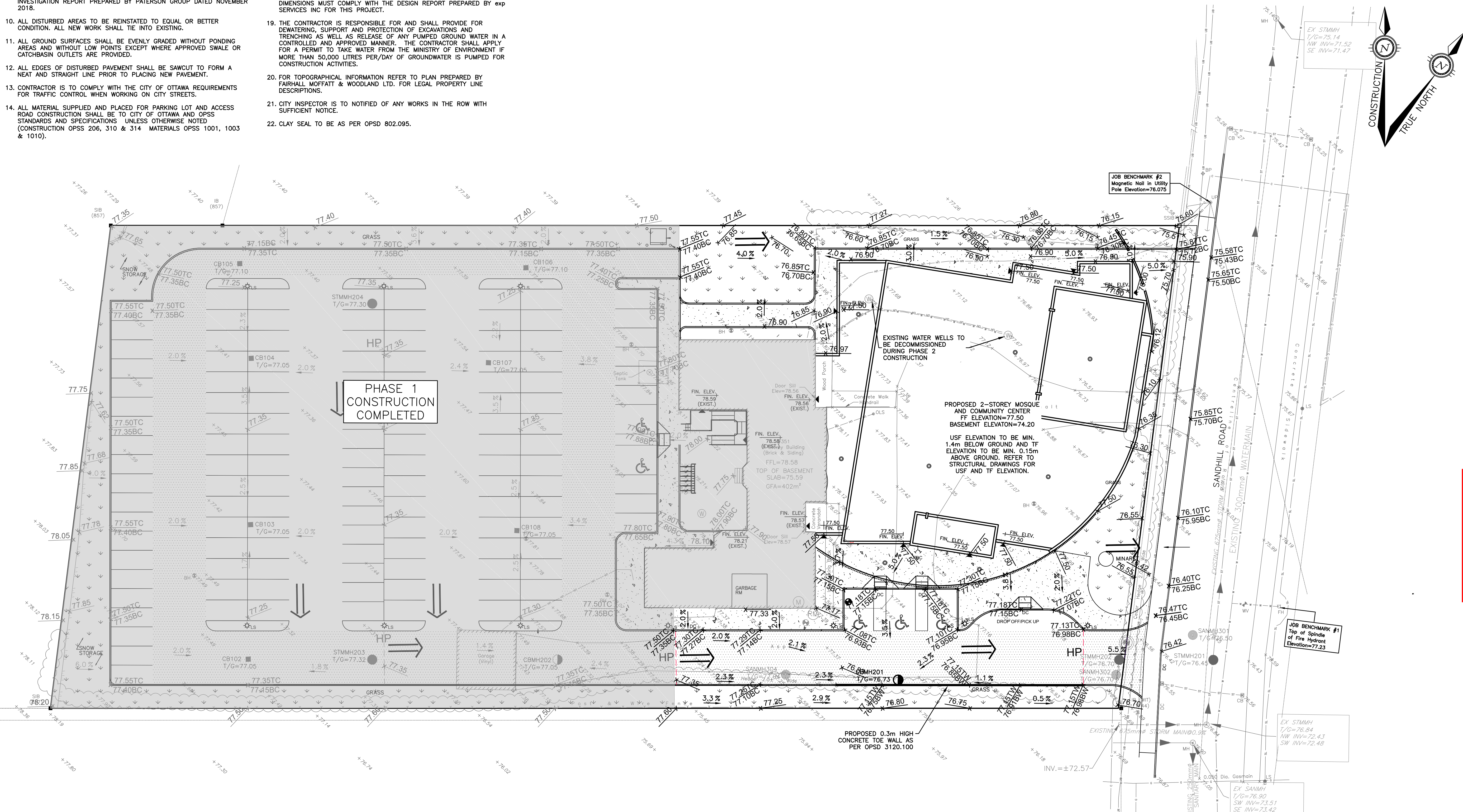
1. CONTRACTOR IS RESPONSIBLE FOR ALL LAYOUT FOR CONSTRUCTION.
2. ALL ELEVATIONS ARE GEODETIC AND UTILIZE METRIC UNITS.
3. JOB BENCH MARK - CONFIRM WITH exp SERVICES INC. PRIOR TO UTILIZATION.
4. ALL DIMENSIONS ARE IN METERS UNLESS OTHERWISE STATED. ALL DRAWINGS SHOULD NOT BE SCALED BY THE CONTRACTOR. ANY MISSED OR QUESTIONABLE DIMENSIONS ARE TO BE CONFIRMED WITH THE CONSULTANT IN WRITING.
5. CONSTRUCTION SHALL BE IN ACCORDANCE WITH CITY OF OTTAWA AND ONTARIO PROVINCIAL STANDARD DRAWING SUPPLEMENTS WHERE APPLICABLE AND ONTARIO PROVINCIAL STANDARDS SHALL APPLY WHERE NO CITY STANDARDS ARE AVAILABLE.
6. ANY DISCREPANCIES, INTERPRETATIONS, CHANGES AND ADDITIONS TO THESE DRAWINGS MUST BE BROUGHT TO THE ATTENTION OF THE ENGINEER, WHEN NOTED AND BEFORE PROCEEDING WITH CONSTRUCTION WORKS.
7. REFER TO ARCHITECT'S SITE PLAN FOR BUILDING DIMENSIONS AND SITE LAYOUT. DIMENSIONS AND LAYOUT INFORMATION SHALL BE CONFIRMED PRIOR TO COMMENCEMENT OF CONSTRUCTION.
8. REFER TO THE LANDSCAPE ARCHITECT'S PLAN FOR SIDEWALK, PATHWAY PLANTING AND OTHER LANDSCAPE FEATURE MATERIALS AND LOCATIONS.
9. FOR GEOTECHNICAL INFORMATION REFER TO THE GEOTECHNICAL INVESTIGATION REPORT PREPARED BY PATERSON GROUP DATED NOVEMBER 2018.
10. ALL DISTURBED AREAS TO BE REINSTATED TO EQUAL OR BETTER CONDITION. ALL NEW WORK SHALL TIE INTO EXISTING.
11. ALL GROUND SURFACES SHALL BE EVENLY GRADED WITHOUT PONDING AREAS AND WITHOUT LOW POINTS EXCEPT WHERE APPROVED SWALE OR CATCHBASIN OUTLETS ARE PROVIDED.
12. ALL EDGES OF DISTURBED PAVEMENT SHALL BE SAWCUT TO FORM A NEAT AND STRAIGHT LINE PRIOR TO PLACING NEW PAVEMENT.
13. CONTRACTOR IS TO COMPLY WITH THE CITY OF OTTAWA REQUIREMENTS FOR TRAFFIC CONTROL WHEN WORKING ON CITY STREETS.
14. ALL MATERIAL SUPPLIED AND PLACED FOR PARKING LOT AND ACCESS ROAD CONSTRUCTION SHALL BE TO CITY OF OTTAWA AND OPSS STANDARDS AND SPECIFICATIONS UNLESS OTHERWISE NOTED (CONSTRUCTION OPS 206, 310 & 314 MATERIALS OPSS 1001, 1002 & 1010).

15. THE CONTRACTOR SHALL CONFIRM LOCATIONS AND ELEVATIONS OF EXISTING SERVICES AND STRUCTURES TO BE CONNECTED TO AND EXISTING SERVICES THAT MAY BE DAMAGED OR CAUSE CONFLICTS PRIOR TO THE INSTITUTION OF ANY NEW SEWER, WATER AND/OR STORM WATER WORKS. THE ENGINEER SHALL BE INFORMED IMMEDIATELY OF ANY ERRORS, DISCREPANCIES, CONFLICTS, OMISSIONS etc THAT ARE FOUND. DO NOT CONTINUE CONSTRUCTION IN AREAS WHERE DISCREPANCIES APPLY UNTIL SUCH DISCREPANCIES HAVE BEEN RESOLVED.
16. THE CONTRACTOR SHALL PROTECT ANY SUCH EXISTING SERVICES & STRUCTURES SUCH REQUIRED MEASURES INCLUDING, BUT NOT LIMITED TO: ENSURE ALL CONCERNED UTILITIES HAVE LOCATED THEIR PLANT PRIOR TO ANY EXCAVATING, LOCATE AND FLAG/PAINT THE LOCATIONS OF ANY U/G PLANT WHICH MIGHT BE DAMAGED BY EXCAVATION AND EXCAVATION TRASH HAND DIG IN PROXIMITY TO EXISTING BURIED SERVICES TO LOCATE THEM WITHOUT ANY RESULTING DAMAGE, BRACE AND SUPPORT WHERE REQUIRED.
17. THE CONTRACTOR SHALL IMPLEMENT BEST MANAGEMENT PRACTICES FOR THE PROTECTION OF THE AREA'S DRAINAGE SYSTEM AND THE RECEIVING WATERCOURSE DURING CONSTRUCTION ACTIVITIES. THIS INCLUDES LIMITING THE FLOW OF OR OF ANY POLLUTANT OR OTHER CLOTH UNDER GRATES OF CATCHBASINS AND MANHOLES AND INSTALLING SILT FENCES AND OTHER EFFECTIVE SEDIMENT TRAPS. THE CONTRACTOR ACKNOWLEDGES THAT FAILURE TO IMPLEMENT SUCH MEASURES MAY BE SUBJECT TO EXISTING BURIED MEASURES MAY BE SUBJECT TO PENALTIES IMPOSED BY ANY APPLICABLE REGULATORY AGENCY.
18. DESIGN ELEVATIONS GIVEN ON THESE PLANS ARE TO BE ADHERED TO WITH NO CHANGES WITHOUT PRIOR WRITTEN APPROVAL BY exp SERVICES INC. SURFACE PONDING STORAGE VOLUMES AND INLET CONTROL DEVICE DESIGN MUST BE IN ACCORDANCE WITH THE DESIGN REPORT PREPARED BY exp SERVICES INC FOR THIS PROJECT.
19. THE CONTRACTOR IS RESPONSIBLE FOR AND SHALL PROVIDE FOR DEWATERING, SUPPORT AND PROTECTION OF EXCAVATIONS AND TRENCHING AS WELL AS RELEASE OF ANY PUMPED GROUND WATER IN A CONTROLLED AND APPROVED MANNER. THE CONTRACTOR SHALL APPLY FOR A PERMIT TO TAKE WATER FROM THE MINISTRY OF ENVIRONMENT IF MORE THAN 50,000 LITRES PER DAY OF GROUNDWATER IS PUMPED FOR CONSTRUCTION ACTIVITIES.
20. FOR TOPOGRAPHICAL INFORMATION REFER TO PLAN PREPARED BY FAIRHALL MOFFATT & WOODLAND LTD. FOR LEGAL PROPERTY LINE DESCRIPTIONS.
21. CITY INSPECTOR IS TO NOTIFIED OF ANY WORKS IN THE ROW WITH SUFFICIENT NOTICE.
22. LAY SEAL TO BE AS PER OP02.08.09S.

1. ASPHALT REINSTATEMENT AS PER CITY OF OTTAWA STANDARD DRAWING R10.
2. CURBS TO BE CONCRETE BARRIER CURBS AS PER CITY OF OTTAWA STANDARD DRAWING SC11.
3. THE CONTRACTOR SHALL COMPLETE ALL RESTORATION WITHIN CITY ROW'S TO A CONDITION EQUAL TO ORIGINAL OR BETTER AND TO THE SATISFACTION OF THE MUNICIPAL AUTHORITIES.
4. THE EXISTING PRIVATE APPROACH IS TO BE REMOVED AS PART OF PHASE 2 WORK. RIGHT-OF-WAY TO BE REINSTATE TO THE SATISFACTION OF THE CITY OF OTTAWA.



—	STANDARD IRON BAR
—	IRON BAR
—	CATCH BASIN
○	MANHOLE
○	WMH WATER MANHOLE
●	LS LAMP STANDARD
○	UTILITY POLE
○	UTILITY VALVE
○	FIRE HYDRANT
○	WELL
—	GUY WIRE AND ANCHOR
—	WATERMAIN
—	OVERHEAD UTILITY WIRES
—	UNDERGROUND HYDRO
—	UNDERGROUND BELL
—	GAS MAIN
—	CABLE (ROGERS)
—	STREET LIGHT
—	STORM SEWER
—	SANITARY SEWER
—	CURB
—	PROPOSED CURB
—	PROPOSED WATERMAIN
—	PROPOSED STORM SEWER
—	PROPOSED SANITARY SEWER
—	PROPOSED CLAY SEAL AT 60m INTERVALS
—	PROPOSED SANITARY MANHOLE
—	PROPOSED STORM MANHOLE
—	PROPOSED STORM CATCHBASIN MANHOLE
—	PROPOSED STORM CATCHBASIN
—	PROPOSED FIRE HYDRANT
—	PROPOSED VALVE & VALVE BOX
—	PROPOSED SIAMESE CONNECTION
—	PROPOSED VALVE & VALVE CHAMBER
—	PROPOSED WATER METER
—	PROPOSED REMOTE WATER METER
—	PROPOSED LIGHT STANDARD
76.40	PROPOSED ELEVATION
—	EXISTING ELEVATION
—	PROPOSED HEAVY DUTY PAVEMENT
—	PROPOSED LIGHT DUTY PAVEMENT
—	PROPOSED CONCRETE SIDEWALK
—	PROPOSED LANDSCAPED AREA
—	PHASE-1 CONSTRUCTION COMPLETED
HP	HIGH POINT
→	OVERLAND FLOW DIRECTION



**LISA STERN
PLANNER
PLANNING, INFRASTRUCTURE & ECONOMIC
DEVELOPMENT DEPARTMENT, CITY OF OTTAWA**

APPROVED
By Lisa Stern at 9:45 am, Sep 15, 2022

CAUTION
THE POSITION OF ALL POLE LINES, CONDUITS, WATERMAINS, SEWERS AND OTHER UNDERGROUND AND OVERGROUND UTILITIES AND STRUCTURES IS NOT NECESSARILY SHOWN ON THE CONTRACT DRAWINGS, AND WHERE SHOWN, THE ACCURACY OF THE POSITION OF SUCH UTILITIES AND STRUCTURES IS NOT GUARANTEED. BEFORE STARTING WORK, DETERMINE THE EXACT LOCATION OF ALL SUCH UTILITIES AND STRUCTURES AND ASSUME ALL LIABILITY FOR DAMAGE TO THEM.

					6	REVISED AS PER CITY COMMENTS	16/04/19	AE	AA
11	REVISED AS PER CITY COMMENTS	20/06/22	AJ	AA	4	REVISED AS PER CITY COMMENTS	19/02/19	AE	AA
10	REVISED AS PER THE REVISED PHASE 2	10/02/22	AJ	AA	4	REVISED AS PER CITY COMMENTS	02/11/18	AE	AA
9	REVISED GRADING & STRUCTURES TOP OF GRATES	15/10/19	AE	AA	3	ISSUED FOR SITE APPROVAL	29/06/18	AE	AA
8	REVISED GRADING	19/06/19	ML	AA	2	ISSUED FOR COORDINATION	06/06/18	ML	AA
7	REMOVED RETAINING WALL AT SOUTH PROPERTY LINE	24/05/19	AE	AA	1	ISSUED FOR COORDINATION	10/05/18	ML	AA
NO.	REVISION DESCRIPTION	DATE	BY	APPD	NO.	REVISION DESCRIPTION	DATE	BY	APPD

DESIGNED BY

REVIEWED BY

CUEN

KANATA MUSLIM ASSOCIATION
832 MARCH ROAD, OTTAWA, ON.
K2W 0C9
613.973.5000

exp Services Inc.
t: +1 613 688 1899 | f: +1 613 225 7390
2650 Queensview Drive, Unit 100
Ottawa, ON K2B 8H6
Canada
www.exp.com

• BUILDINGS • EARTH & ENVIRONMENT • ENERGY •
• INDUSTRIAL • INFRASTRUCTURE • SUSTAINABILITY

BASEPLAN

PROJECT
KMA MOSQUE AND COMMUNITY CENTRE
351 SANDHILL ROAD, OTTAWA, ON

GRADING PLAN PHASE 2

PROJECT No.
OTT-00238504-A0

SURVEY
F M & W
DATE

2016-12-09
DRAWING No.

GP-2

100