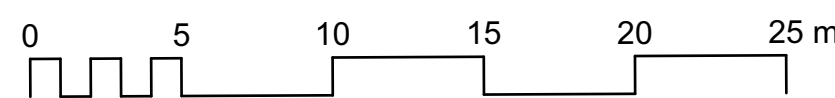
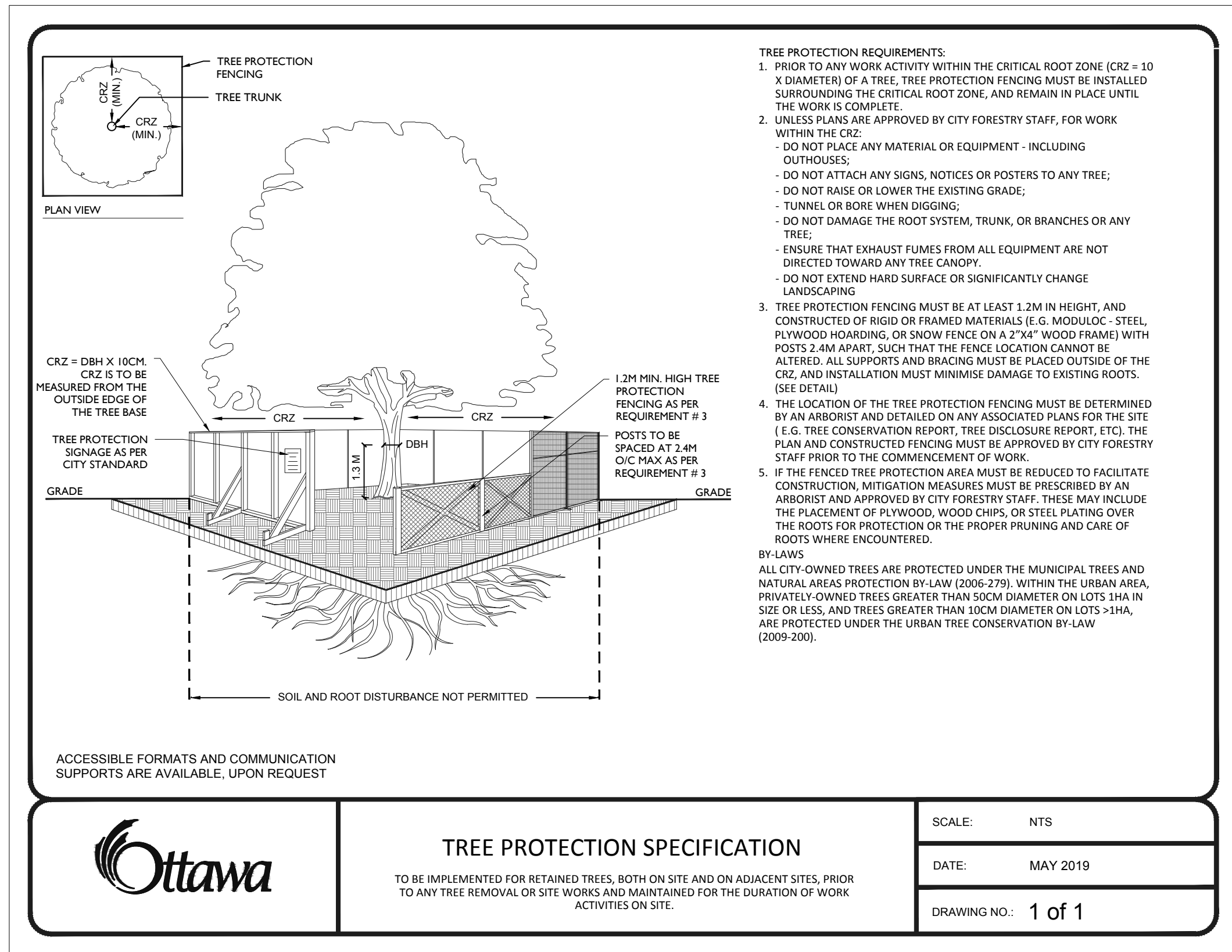
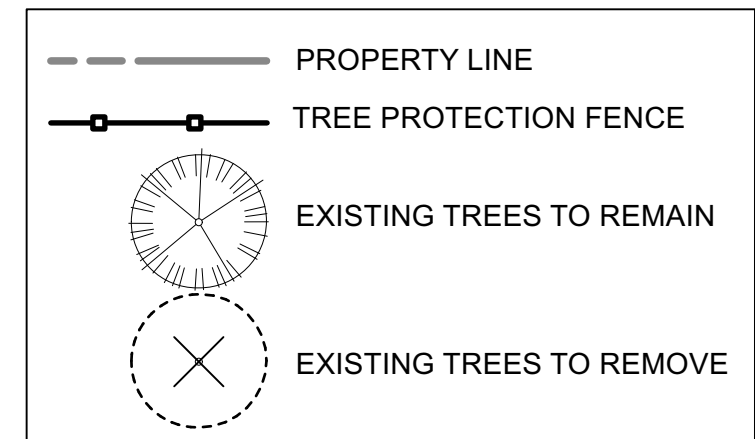


Existing Tree Removal / Protection Plan

Scale 1:250

Legend



LISA STERN
PLANNER
PLANNING, INFRASTRUCTURE & ECONOMIC
DEVELOPMENT DEPARTMENT, CITY OF OTTAWA

APPROVED
By Lisa Stern at 9:54 am, Sep 15, 2022

NOTE:
THIS PLAN IS ISSUED FOR SITE PLAN
CONTROL SUBMISSION ONLY.
ADDITIONAL DETAILING AND
SPECIFICATIONS ARE REQUIRED
PRIOR TO TENDERING OR
CONSTRUCTION.

EXISTING TREE REMOVAL / CONSERVATION NOTE:

REFER TO PREVIOUS LANDSCAPE
PLANS FROM 2019 BY LASHLEY +
ASSOCIATES, FILE # D07-12-17-0119
FOR ORIGINAL TREE INVENTORIES,
REMOVAL AND CONSERVATION.

TREE ID NUMBERS SHOWN ON THIS
DRAWINGS CORRESPONDING TO THE
ORIGINAL TREE INVENTORIES BY
LASHLEY.

REFER ALSO TO THE AMENDMENTS
TO TREE CONSERVATION FILE #
D06-01-17-0137 BY RUHLAND &
ASSOCIATES DATED DECEMBER 11,
2019, ADDRESSED TO MR. MARK
RICHARDSON.

owner
Kanata Mosque
351 Sandhill Road
Kanata, ON
architect
Studio Senbel, a+d inc.
#125-1085 East Kent Ave. N
vancouver, b.c. V5X 4V9
t: 604.605.6995 f: 604.605.6993
sws@studiosenbel.com

landscape architect

Ruhland & Associates Ltd

landscape architecture • urban design • site planning
Ph 613-224-4244 Fx 613-224-1331 info@rala.ca www.rala.ca

6			
5			
4			
3			
2			
1	Issued for Site Plan Control	2022/07/22	AA
NUMBERS	MILESTONE / FAIT SAILLANT	(DATE)	(Y/M/D)
AA / MR			MR
DRAWN BY / DESSINE PAR			SCALE / ÉCHELLE
TF			1:250
ARCHITECT			CONSULTANT
CONSULTANT			CONSULTANT

PROJECT / LOCATION

KANATA MOSQUE PHASE 2

351 SANDHILL ROAD,
OTTAWA, ONTARIO

DRAWING

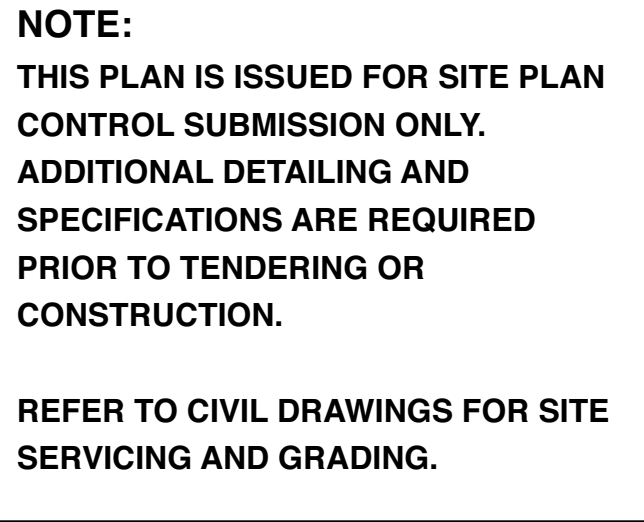
EXISTING TREE REMOVAL / PROTECTION PLAN

PROJECT NO.
21-1664

SHEET NO.

TP - 01

D07-12-17-0137



landscape architect

landscape architecture • urban design • site planning
Ph 613-224-4744 Fx 613-224-1131 info@rala.ca www.rala.ca

1. All general site information and conditions compiled from existing plans, surveys and consultant's field notes. Report all discrepancies prior to any work. No responsibility is born by the Consultant for unknown subsurface conditions.
2. The location of utilities is approximately only, and the exact location should be determined by consulting the municipal authorities and utility companies concerned. The Contractor shall prove the location of utilities and shall be responsible for adequate protection from damage.
3. All dimensions shown are to be verified on site prior to any construction. No deviations are to be made from the layouts as shown on this plan without prior consultation with the Landscape Architect and
4. Obtain approval of the Consultant(s) for granular base and layout of all pavement areas prior to construction.
5. Stake planting locations and receive approval of Landscape Architect, prior to excavation of any planting pits. No substitutions of plant material shall be made without prior approval of the Landscape Architect.
6. Where clay is encountered proper drainage must be ensured in tree/shrub pits, prior to planting. Have this approved by Landscape Architect.
7. Maintain positive surface runoff through the entire construction period.
8. Reinstatement all areas and items damaged as a result of construction activities.

DESIGNED BY / CONÇU PAR AA / MR	CHECKED BY / VÉRIFIÉ PAR MR
DRAWN BY / DESSINÉ PAR TF	SCALE / ÉCHELLE 1:250
<i>ARCHITECT</i>	<i>CONSULTANT</i>

PROJECT / LOCATION

351 SANDHILL ROAD,
OTTAWA, ONTARIO

RAWING

SHEET NO.

PROJECT NO.
21-1664

L - 01

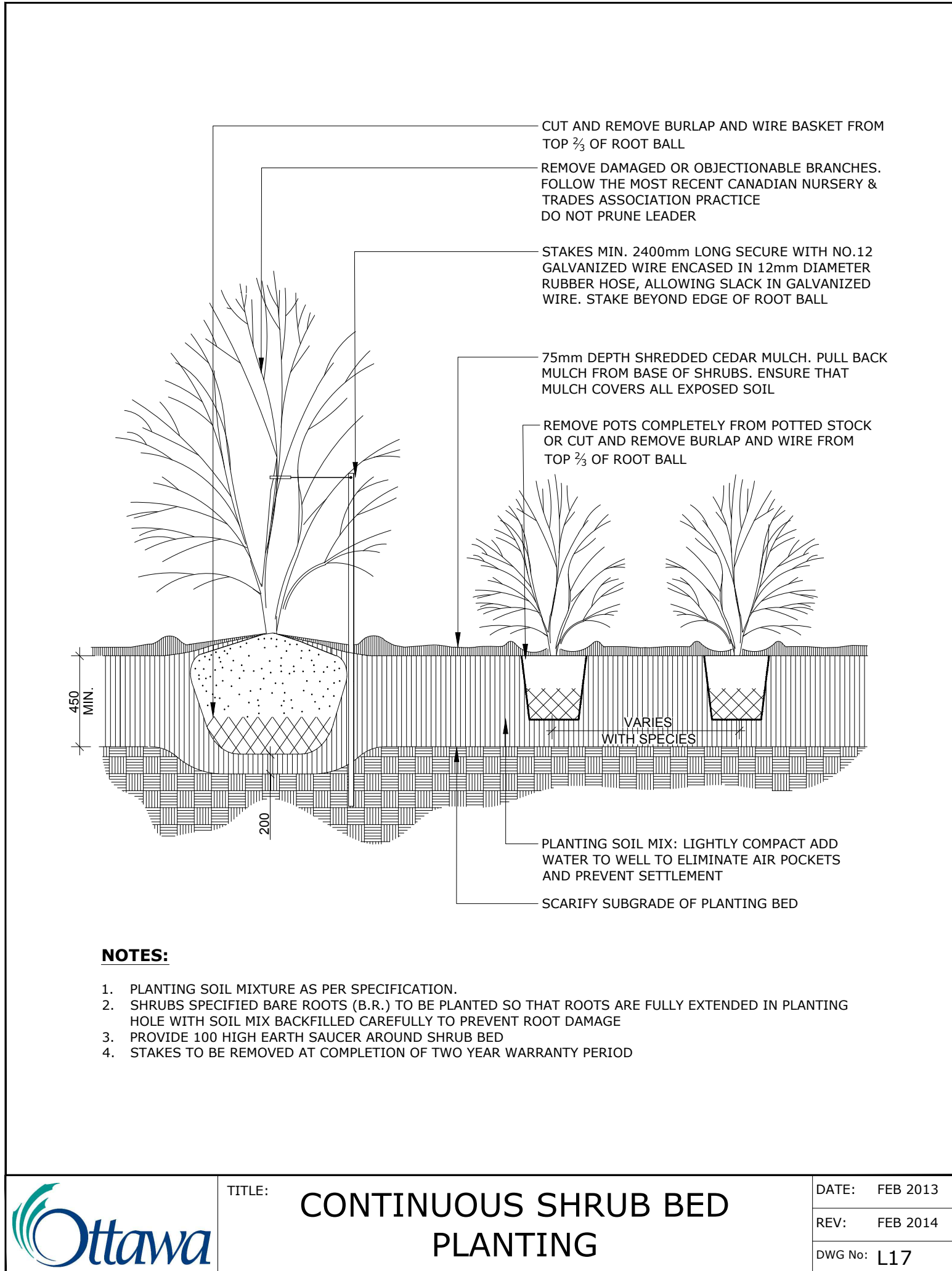
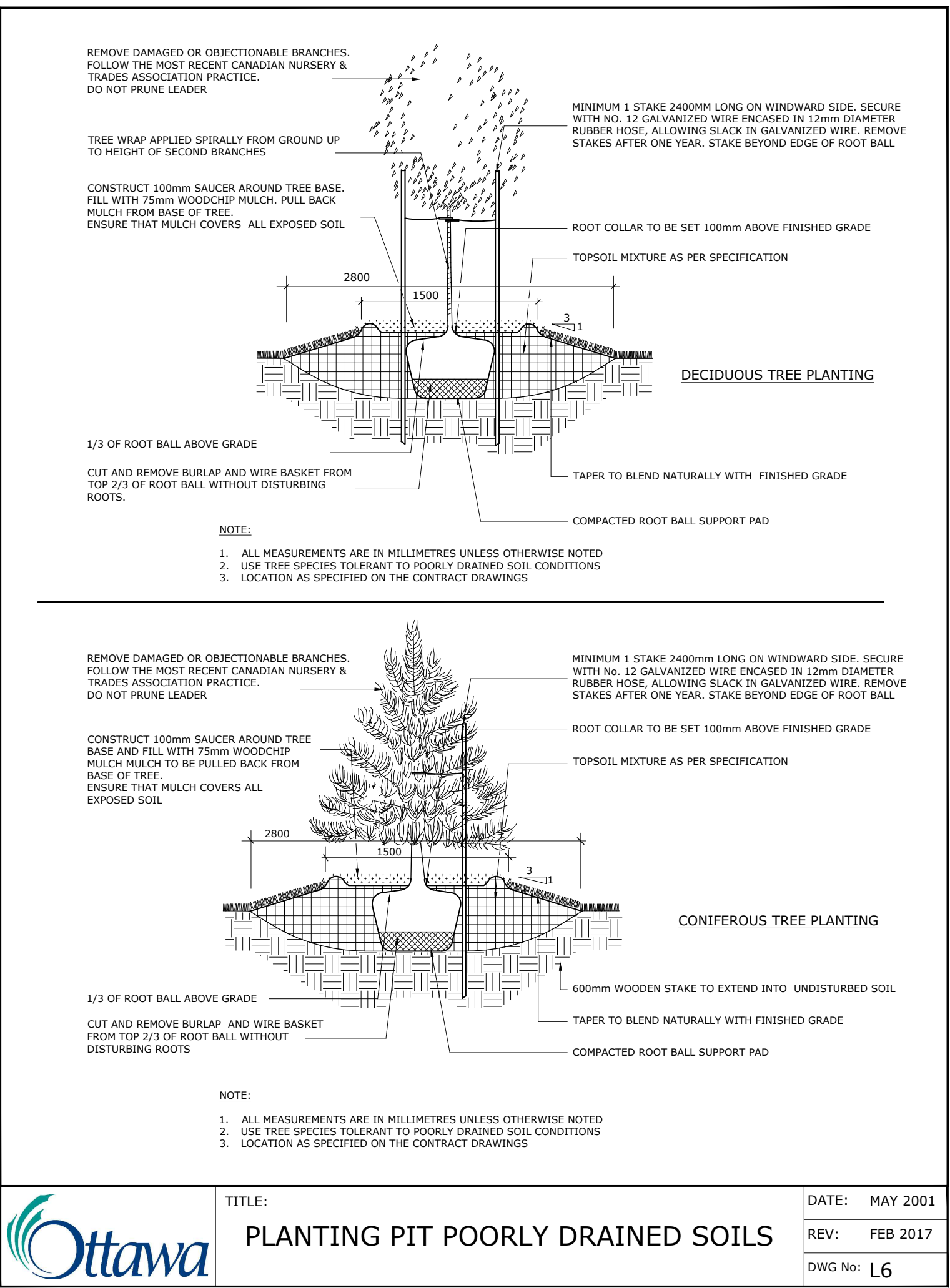
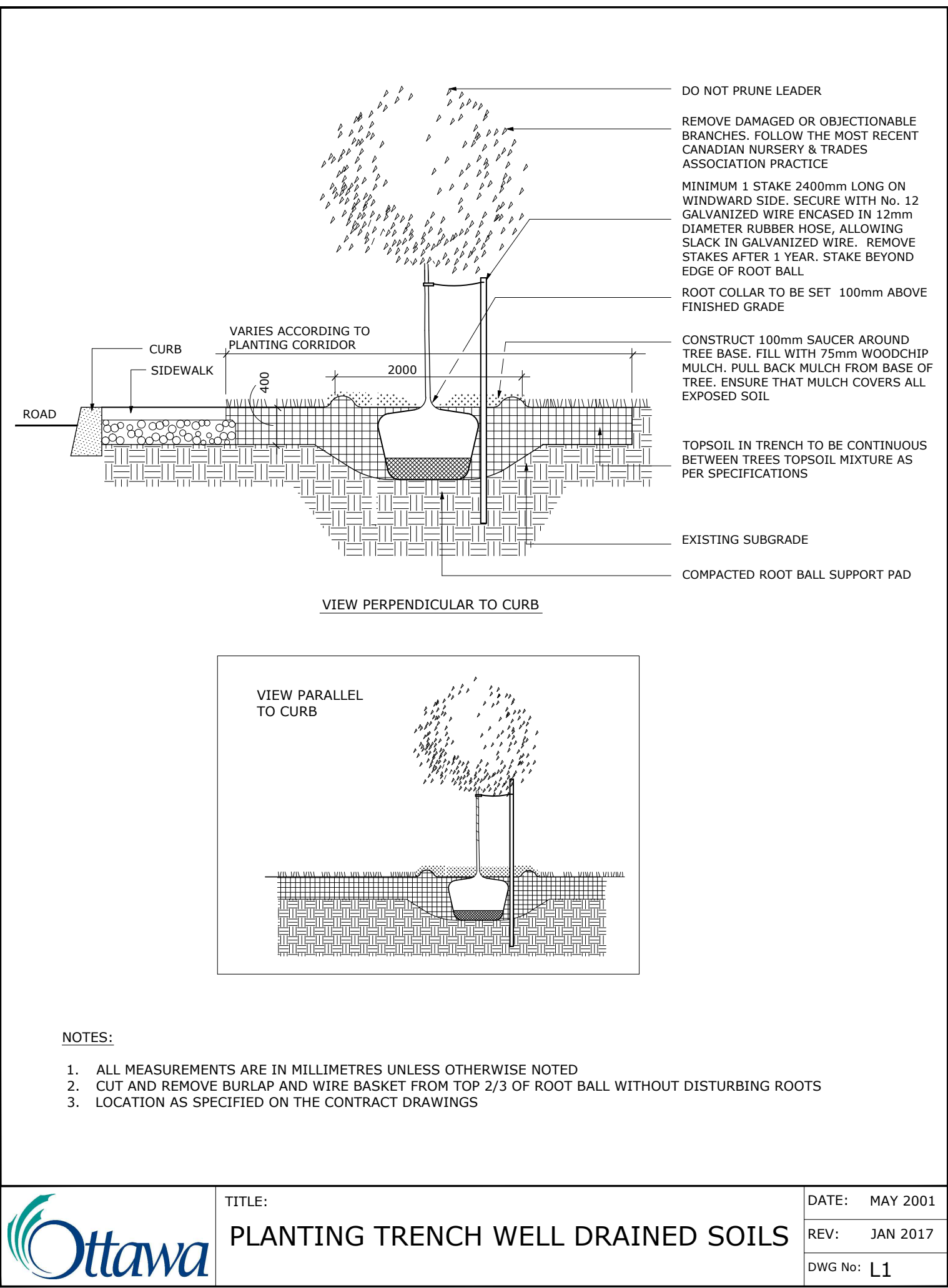
Scale 1:250

Perennial types: (*invasives such as miscanthus or purple loosestrife are not to be planted*)

PvE: Perennials for planter <100cm ht: Fern spp., Canada Columbine, Rodgersia pinnata 'Elegans' (pink/yellow), Columbine-leaved Meadowrue, Hosta var,

Legend

007-12-22-0036



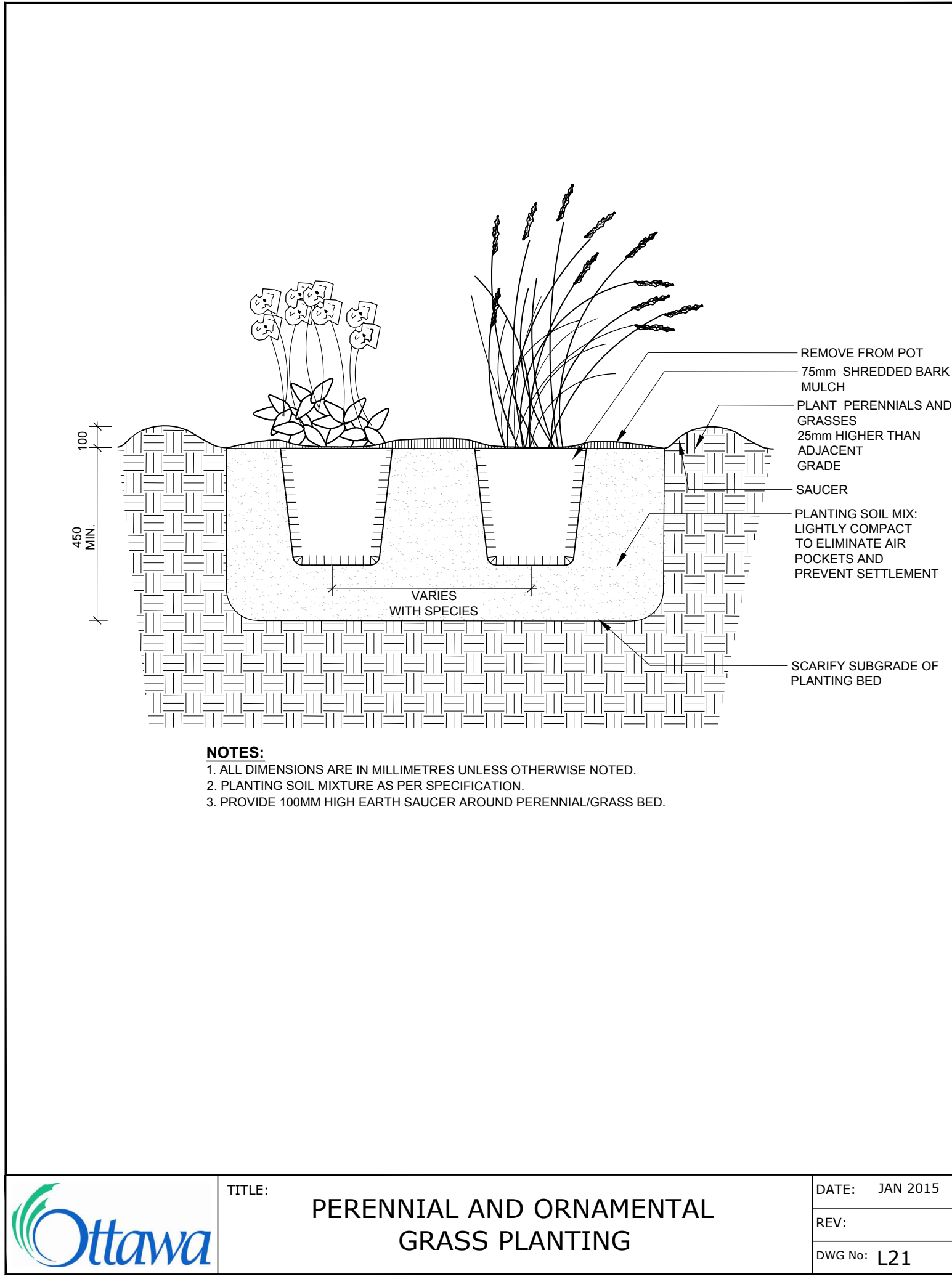
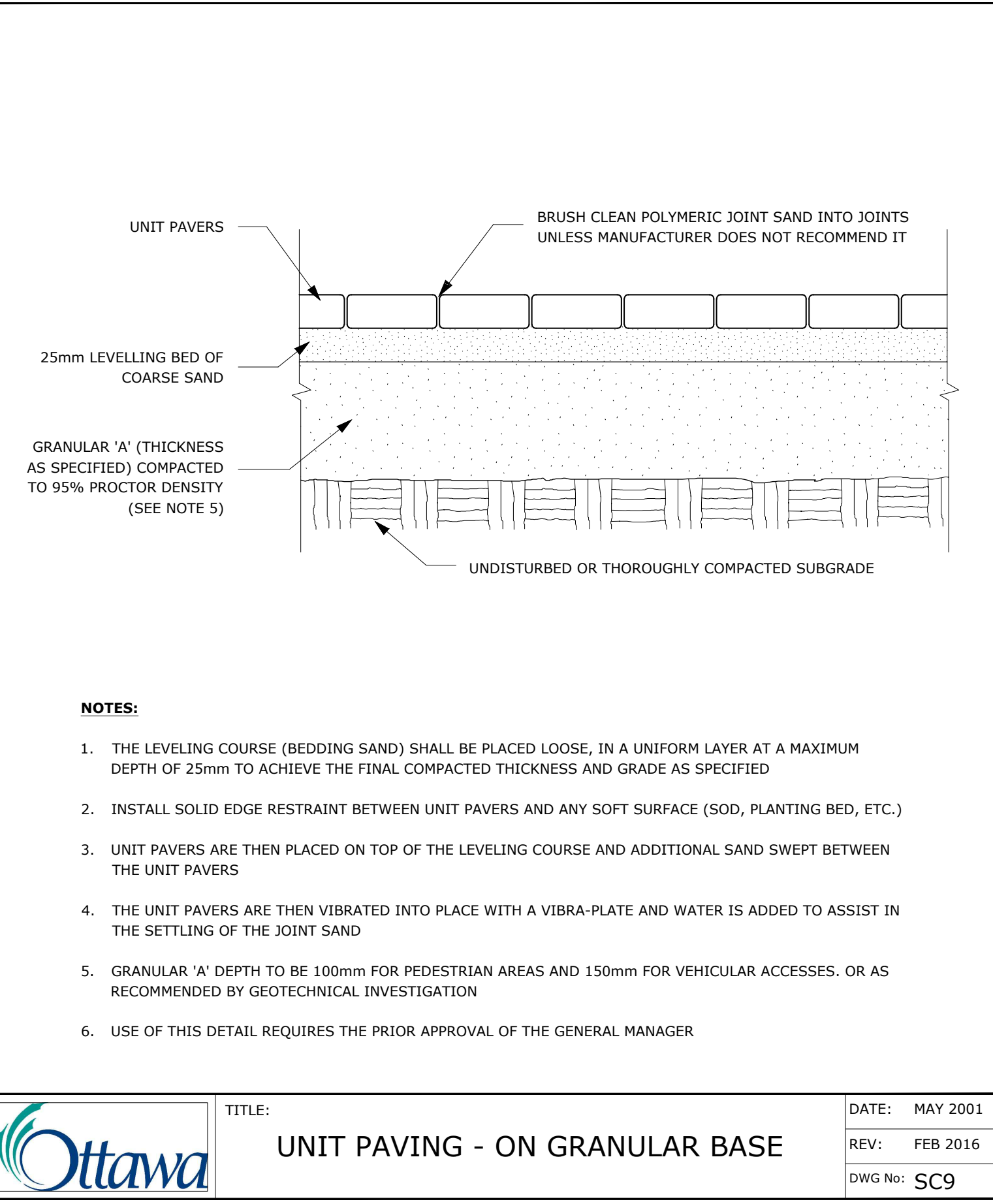
NOTES:

TREES ARE TO BE INSTALLED AS PER CITY STANDARD DETAILS; SOIL VOLUME AS PER BELOW NOTES AND MATRIX ON SHEET L-01.

- STANDARD TREE SOIL VOLUMES QUANTITIES INCLUDE THE TOP 900-1000mm OF SOIL/EXISTING SUBSOIL LAYER TO CALCULATE TOTAL SOIL VOLUMES REQUIRED BY THE CITY OF OTTAWA FOR SUSTAINABLE TREE GROWTH. WHERE LARGER SOFT AREAS ARE AVAILABLE, THE TOP 400-500mm LAYER IS USED TO CALCULATE SOIL VOLUMES.

- WHERE EXISTING MATERIAL BELOW THE SPECIFIED TOPSOIL IS NOT CONDUCIVE TO TREE GROWTH, AN ADDITIONAL LAYER OF PLANTING MEDIUM IS TO BE INSTALLED BELOW SPECIFIED TOPSOIL DEPTH TO OBTAIN THE SOIL VOLUME DEPTH REQUIRED.

- REFER TO SOIL VOLUME MATRIX AND PLANS FOR AREA WHERE TREE SOIL VOLUMES ARE REQUIRED.



ADDITIONAL NOTES FOR NUMBER 5: PRECAST PAVERS IN PEDESTRIAN AREAS WHERE NORMAL SNOW REMOVALS ARE DONE IS TO RECEIVE A MINIMUM 200mm GRANULAR 'A'. FURTHER ADJUSTMENTS TO BE SPECIFIED IN RELATION TO SITE CONDITIONS AND GEOTECHNICAL RECOMMENDATIONS.

owner
Kanata Mosque
351 Sandhill Road
Kanata, ON

architect
Studio Senbel, a+d inc.
#125-1085 East Kent Ave. N
vancouver, b.c. V5X 4V9
t: 604.605.6995 f: 604.605.6993
sws@studiosenbel.com

landscape architect

Ruhland & Associates Ltd
landscape architecture • urban design • site planning
Ph 613-224-4244 Fx 613-224-1331 info@rala.ca www.rala.ca

6			
5			
4			
3			
2	Issued for Site Plan Control	2022/07/22	AA
1	Issued for Site Plan Control	2022/02/18	AA
NUMBERS	MILESTONE / FAIT SAILLANT	(YMD) (JANU)	INITIALS
DESIGNED BY / CONCU PAR	CHECKED BY / VERIFIE PAR		
AA / MR	MR		
DRAWN BY / DESINE PAR	SCALE / ECHELLE		
TF			
ARCHITECT	CONSULTANT		
CONSULTANT	CONSULTANT		

PROJECT / LOCATION

KANATA MOSQUE PHASE 2

351 SANDHILL ROAD,
OTTAWA, ONTARIO

DRAWING

LANDSCAPE DETAILS

SHEET NO.

PROJECT NO.
21-1664

L - 02