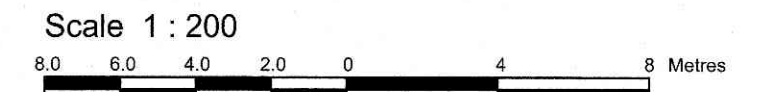


PART OF BLOCK C
REGISTERED PLAN 771
CITY OF OTTAWA

Prepared by Annis, O'Sullivan, Vollebek Ltd.



Metric
DISTANCES SHOWN ON THIS PLAN ARE IN METRES AND
CAN BE CONVERTED TO FEET BY DIVIDING BY 0.3048

Surveyor's Certificate

- I CERTIFY THAT:
1. This survey and plan are correct and in accordance with the Surveys Act, the Surveys Act, the Land Titles Act and the regulations made under them.
 2. The survey was completed on the 10th day of December, 2020.

Date: 10/12/20
 V. Andrew Sheip
 Ontario Land Surveyor

Notes & Legend

- | | | |
|--|---------|----------------------------------|
| | Denotes | Survey Monument Planted |
| | | Survey Monument Found |
| | | Standard Iron Bar |
| | | Short Standard Iron Bar |
| | | Iron Bar |
| | | Round Iron Bar |
| | | Survey Monument (0.3 long) |
| | | Witness |
| | | Annis, O'Sullivan, Vollebek Ltd. |
| | | Meas. |
| | | Registered Plan 771 |
| | | Plan SR-3519 |
| | | Plan by Shipman Nov. 1, 1985 |
| | | (AOG) Plan Aug. 22, 2017 |
| | | Maintenance Hole (Unidentified) |
| | | Utility Pole |
| | | Anchor |
| | | Corrugated Steel Pipe |
| | | Top of Pipe |
| | | Top of Grate |
| | | Snake Rail Fence |
| | | Chain Link Fence |
| | | Location of Elevations |
| | | Top of Wall Elevations |
| | | Bell Terminal Box |
| | | Diameter |
| | | Over Head Wires |
| | | Hydro Bottom Bolt (Transformer) |
| | | Gas Meter |
| | | Sign |
| | | Maintenance Hole (Sanitary) |
| | | Deciduous Tree |
| | | Coniferous Tree |
| | | Water Valve |
| | | Overhead Wires |
| | | Centreline |
| | | Property Line |

SITE AREA = 2359.5 m²

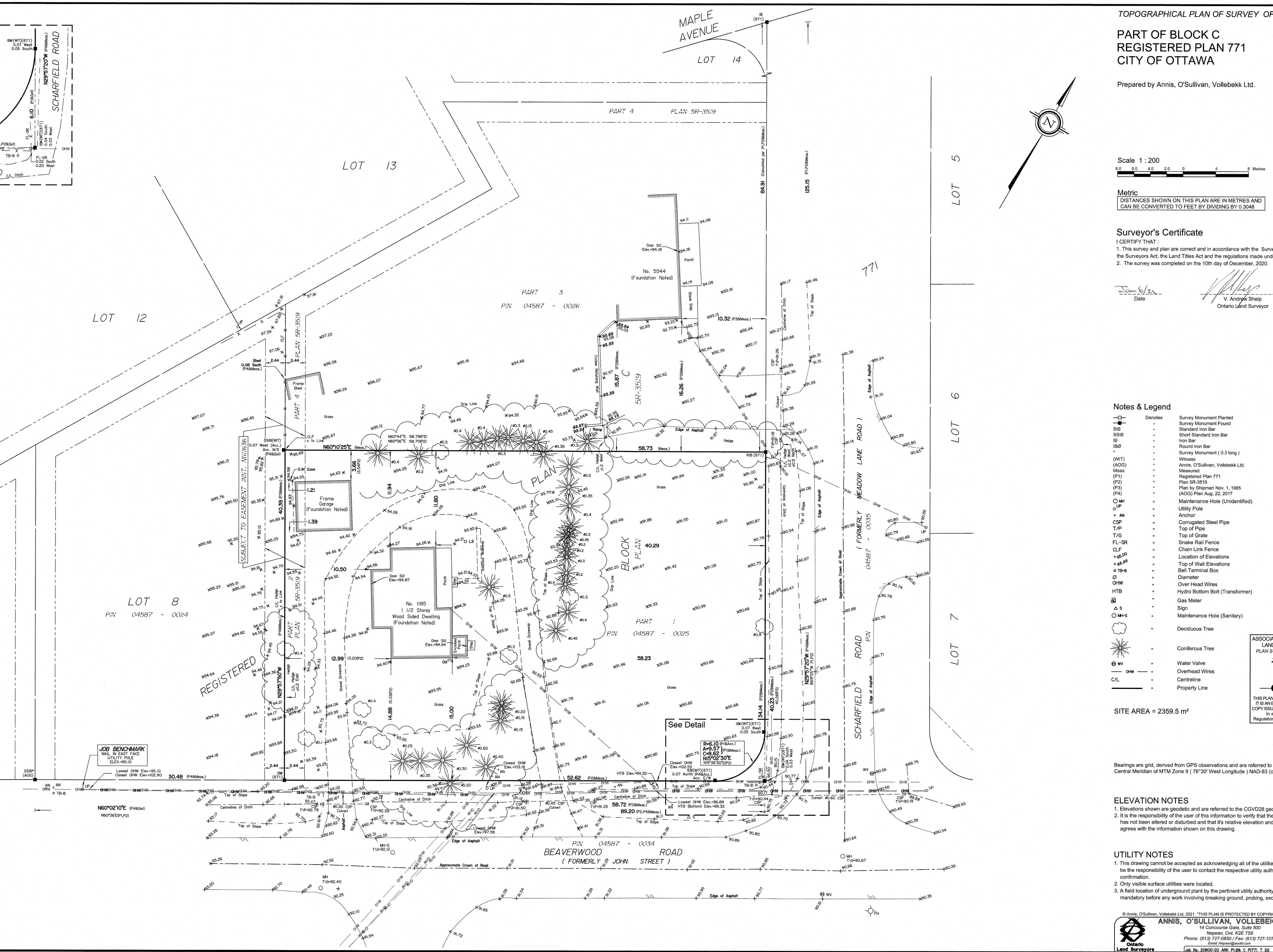
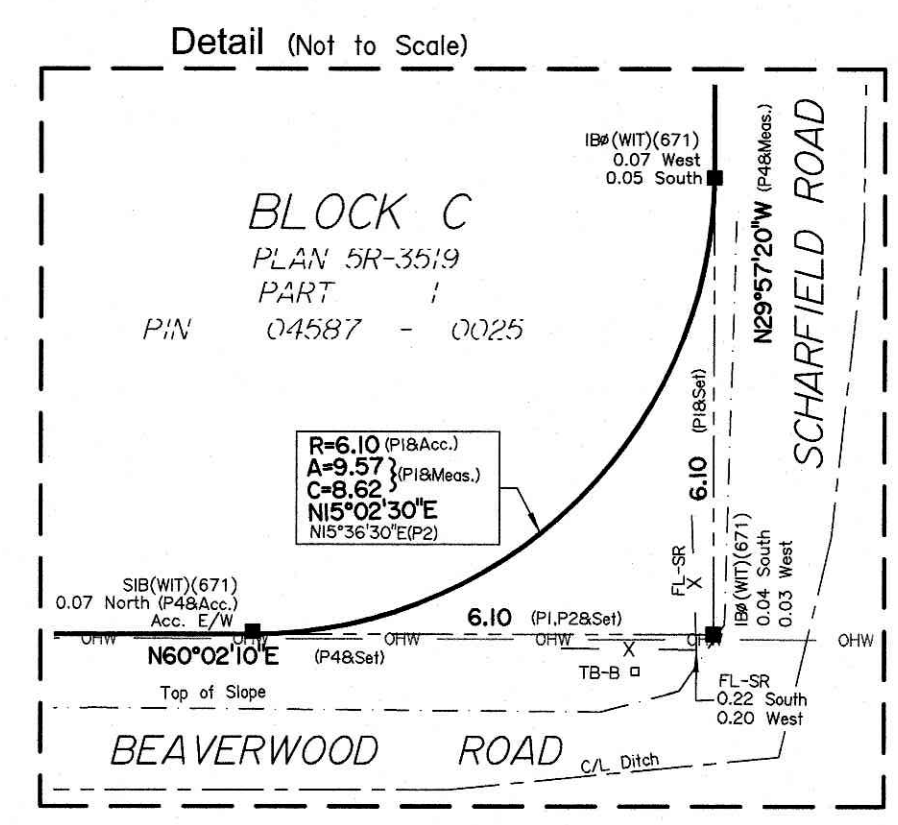
Bearings are grid, derived from GPS observations and are referred to the Central Meridian of MTM Zone 9 (76°30' West Longitude) NAD-83 (original).

ELEVATION NOTES

1. Elevations shown are geodetic and are referred to the CGVD28 geodetic datum.
2. It is the responsibility of the user of this information to verify that the job benchmark has not been altered or disturbed and that its relative elevation and description agrees with the information shown on this drawing.

UTILITY NOTES

1. This drawing cannot be accepted as acknowledging all of the utilities and it will be the responsibility of the user to contact the respective utility authorities for confirmation.
2. Only visible surface utilities were located.
3. A field location of underground plant by the pertinent utility authority is mandatory before any work involving breaking ground, probing, excavating etc.



ASSOCIATION OF ONTARIO
 LAND SURVEYORS
 PLAN SUBMISSION FORM
 2150119

THIS PLAN IS NOT VALID UNLESS
 IT IS AN EMBOSSED ORIGINAL
 COPY ISSUED BY THE SURVEYOR
 In accordance with
 Regulation 1026, Section 29 (3).