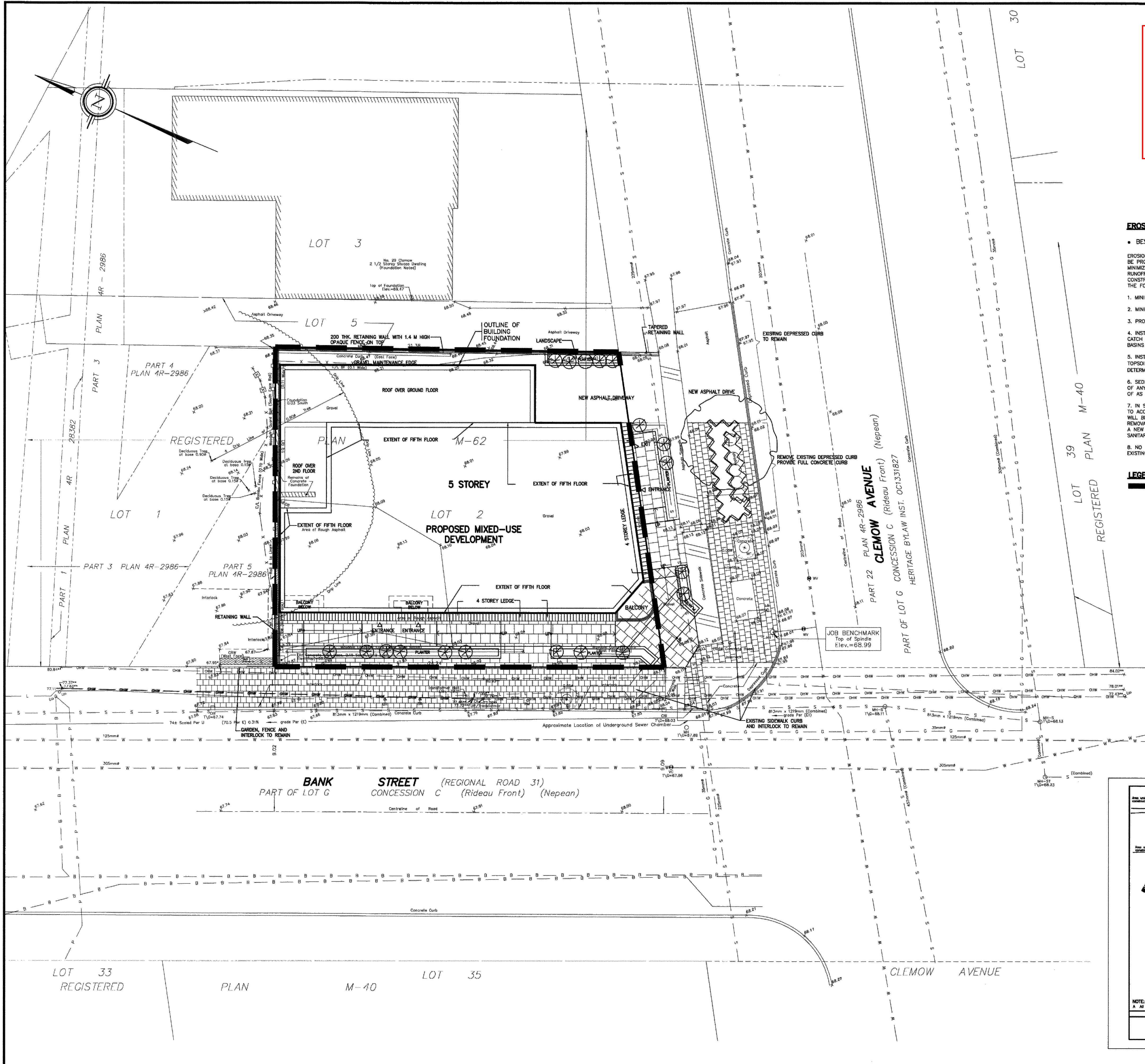
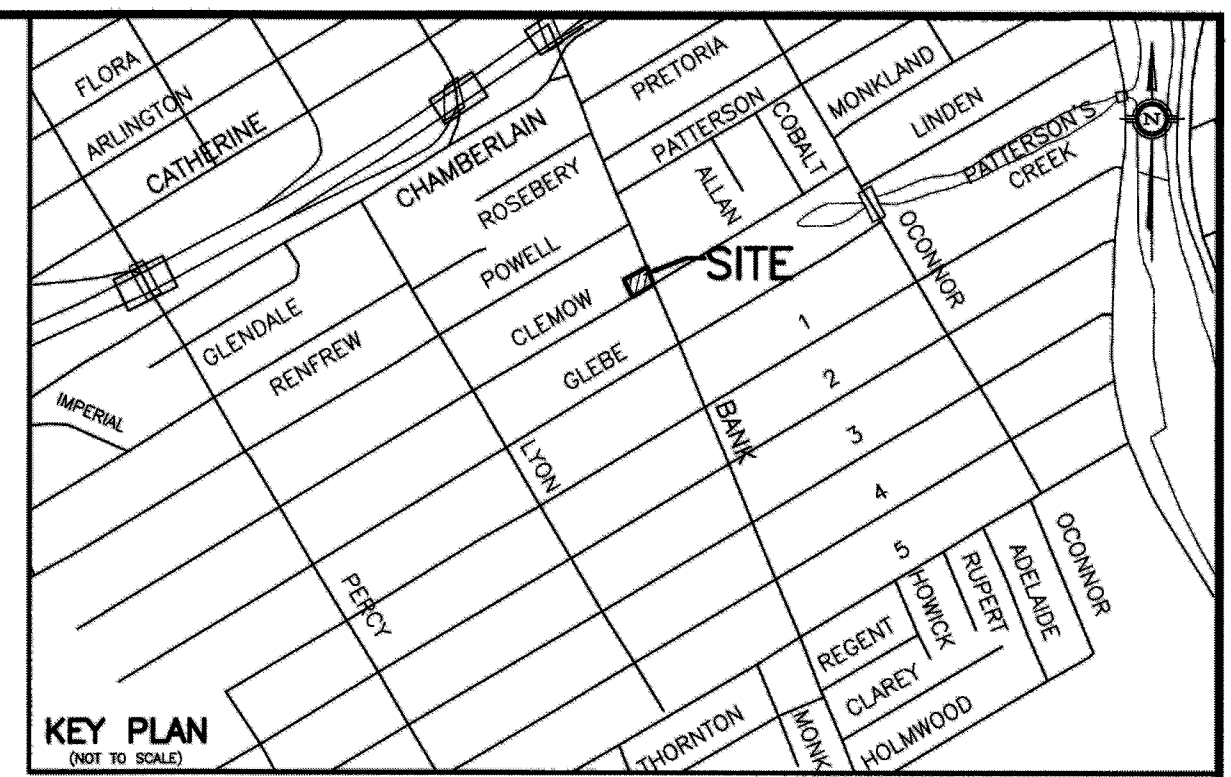


AtHamlin

ALLISON HAMLIN
MANAGER (A), DEVELOPMENT REVIEW WEST
PLANNING, REAL ESTATE & ECONOMIC DEVELOPMENT
DEPARTMENT, CITY OF OTTAWA

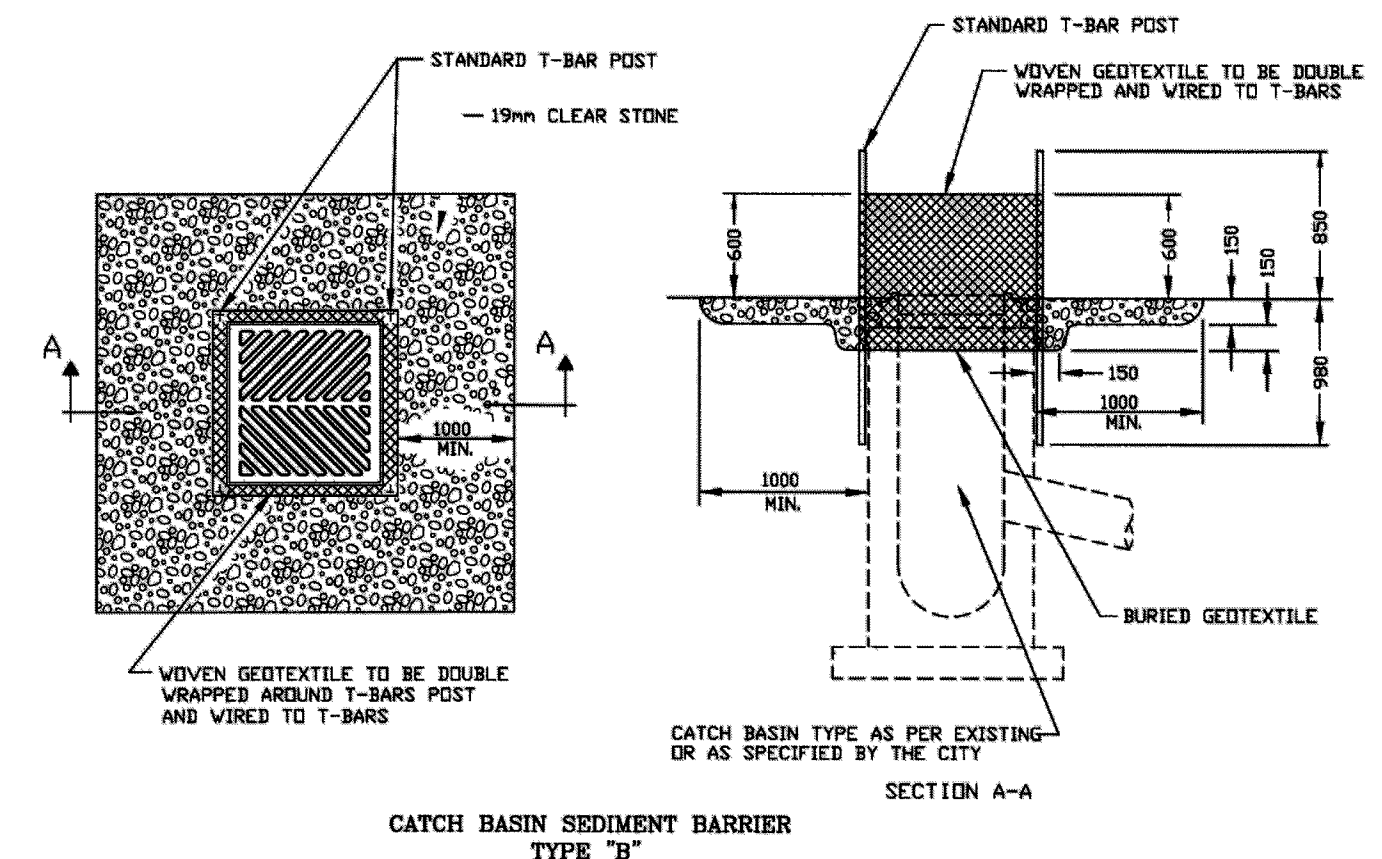
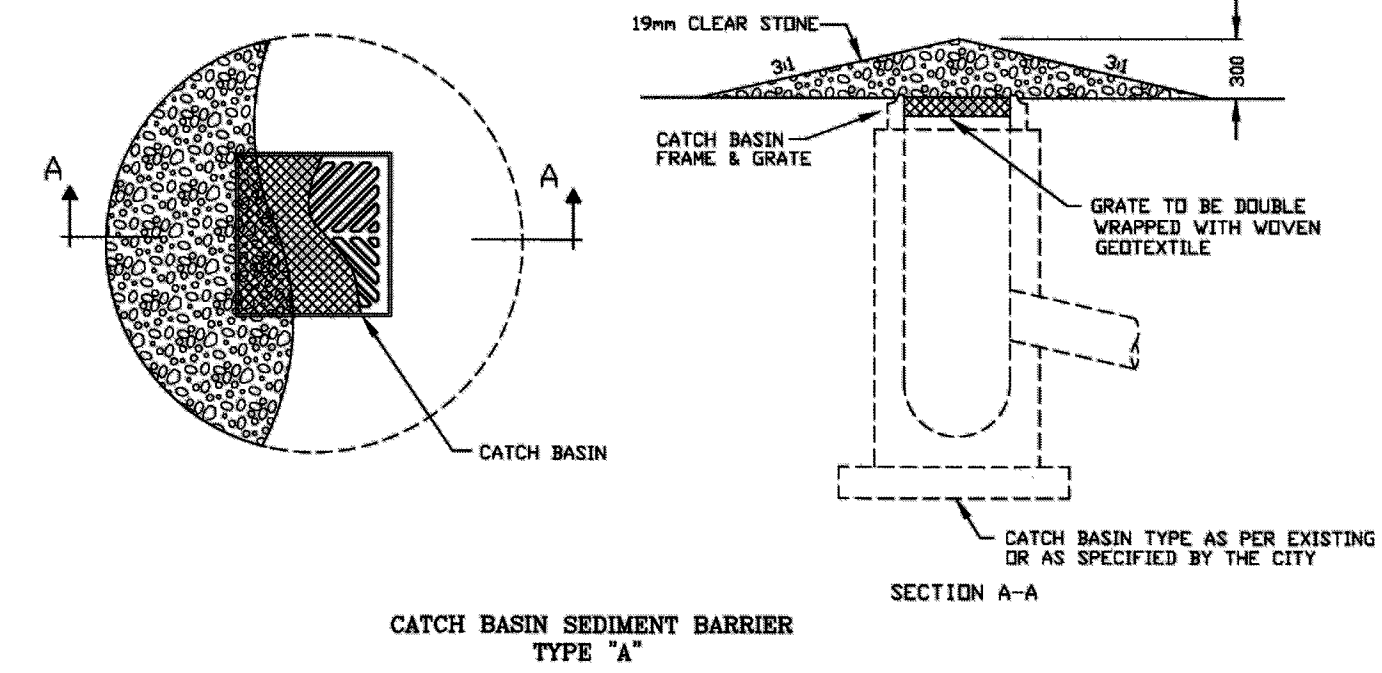
APPROVED
 By Allison Hamlin at 4:27 pm, Jul 15, 2022



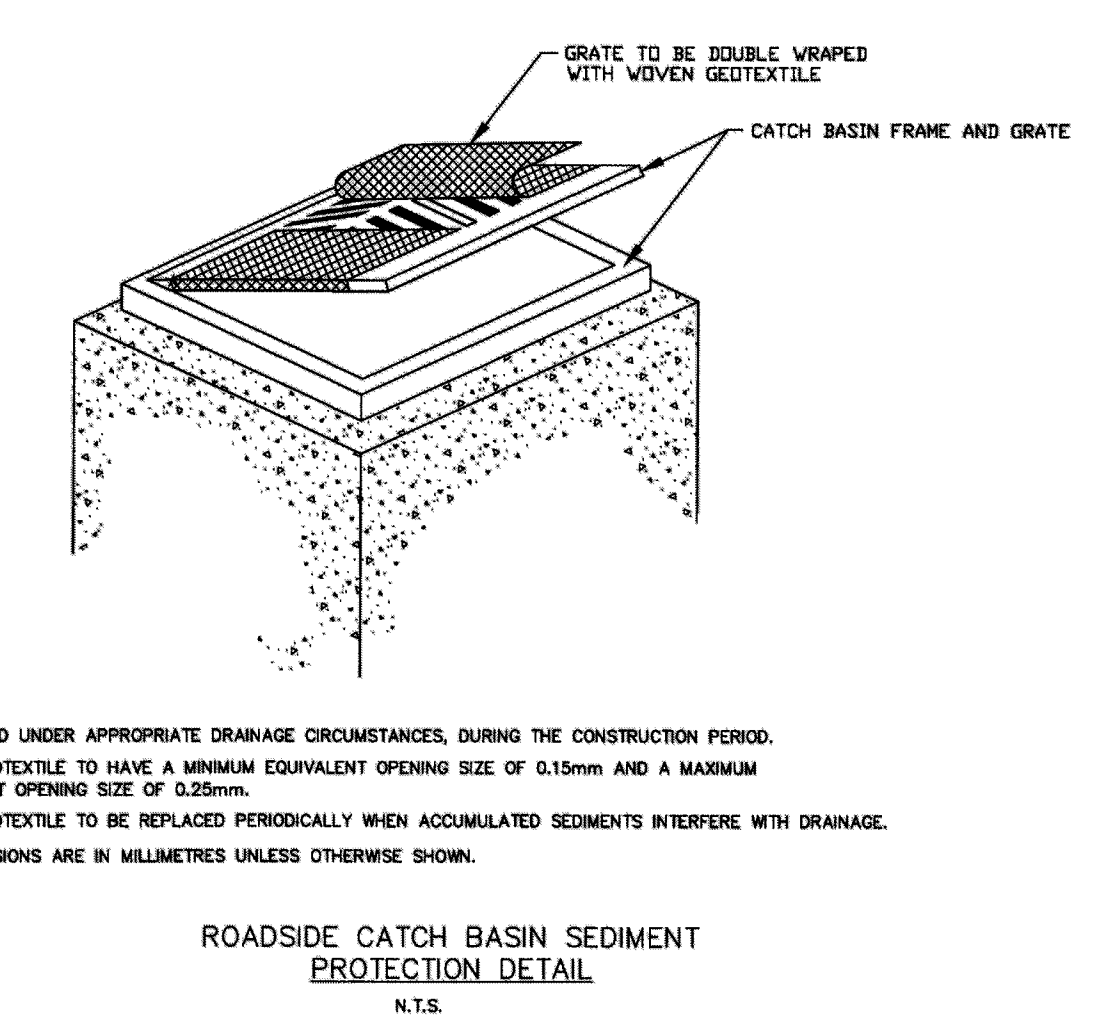
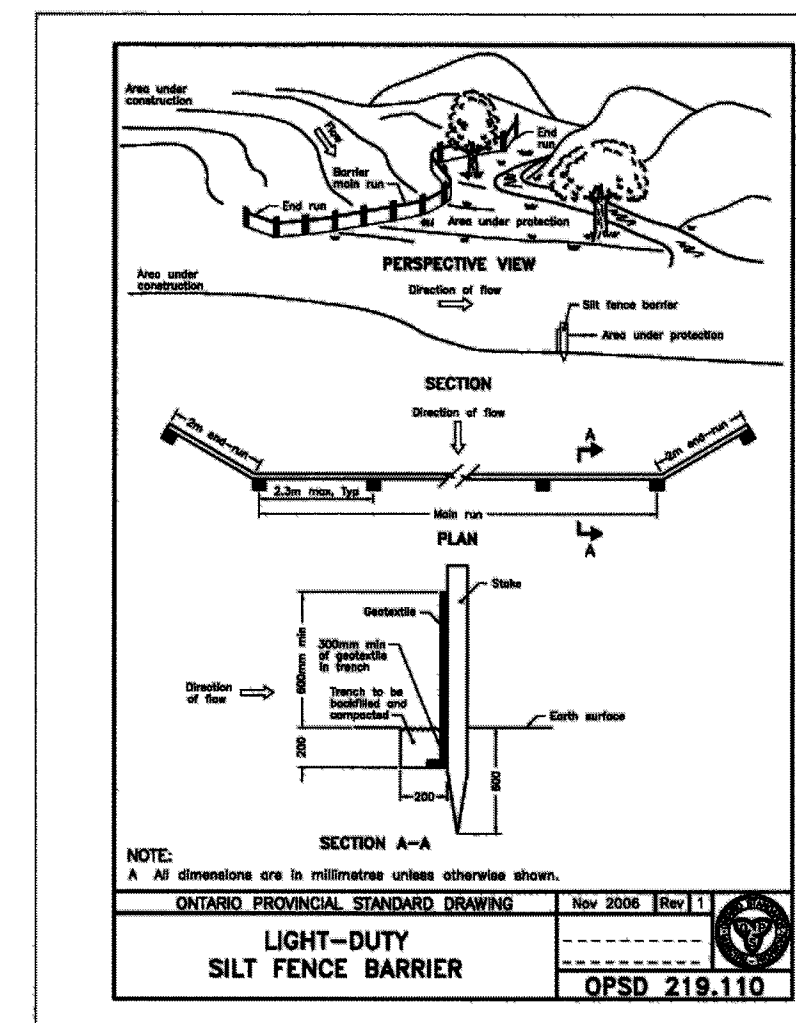
EROSION AND SEDIMENT CONTROL NOTES

- BEST MANAGEMENT PRACTICES
- EROSION AND SEDIMENT CONTROLS (BEST MANAGEMENT PRACTICES) SHALL BE PROVIDED DURING CONSTRUCTION OF THIS PROJECT. EROSION MUST BE MINIMIZED AND SEDIMENTS MUST BE REMOVED FROM CONSTRUCTION SITE RUNOFF IN ORDER TO PROTECT DOWNSTREAM AREAS. DURING ALL CONSTRUCTION, EROSION AND SEDIMENTATION SHOULD BE CONTROLLED BY THE FOLLOWING TECHNIQUES:
1. MINIMIZE THE EXTENT OF EXPOSED SOILS.
 2. MINIMIZE THE AREA TO BE CLEARED AND GRUBBED.
 3. PROTECT EXPOSED SLOPES WITH PLASTIC OR SYNTHETIC MULCHES.
 4. INSTALL FILTER CLOTH BETWEEN FRAME AND COVER ON ALL PROPOSED CATCH BASINS AND CATCH BASIN MANHOLES AND ON ALL EXISTING CATCH BASINS THAT WILL RECEIVE RUNOFF FROM THE SITE.
 5. INSTALL SILT FENCES AROUND THE PERIMETER OF STOCKPILES OF TOPSOIL TO BE USED OR REMOVED FROM SITE. (LOCATION TO BE DETERMINED).
 6. SEDIMENT CONTROL DEVICES SHALL BE INSPECTED DAILY AND CLEANED OF ANY ACCUMULATED SILT AS REQUIRED. THE DEPOSITS WILL BE DISPOSED OF AS PER THE REQUIREMENTS OF THE CONTRACT.
 7. IN SOME CASES SOME FILTER BARRIERS MAY BE REMOVED TEMPORARILY TO ACCOMMODATE CONSTRUCTION OPERATIONS. THE AFFECTED BARRIERS WILL BE REINSTATED AT NIGHT WHEN CONSTRUCTION IS COMPLETED. REMOVAL SHALL NOT OCCUR IF RUNOFF OR RAINFALL IS PREDICTED UNLESS A NEW DEVICE HAS BEEN INSTALLED TO PROTECT THE EXISTING STORM AND SANITARY SEWER SYSTEMS.
 8. NO REFUELING OR CLEANING OF EQUIPMENT IS PERMITTED NEAR ANY EXISTING WATERWAYS.

LEGEND
 SILT FENCE BARRIER LOCATION



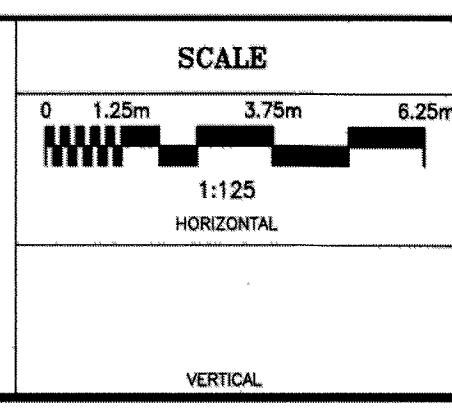
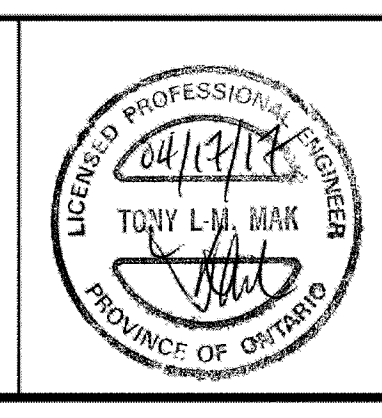
- NOTES:**
- 1) CATCH BASIN LIFT HOLES TO BE PARDED WITH CONCRETE.
 - 2) WOVEN GEOTEXTILE TO HAVE A MINIMUM EQUIVALENT OPENING SIZE OF 0.15mm AND A MAXIMUM EQUIVALENT OPENING SIZE OF 0.25mm.
 - 3) ALL DIMENSIONS ARE IN MILLIMETRES UNLESS OTHERWISE SHOWN.
- CATCH BASIN SEDIMENT BARRIER TYPE "A" AND "B"**
 N.T.S.



- NOTES:**
- 1) TO BE USED UNDER APPROPRIATE DRAINAGE CIRCUMSTANCES, DURING THE CONSTRUCTION PERIOD.
 - 2) WOVEN GEOTEXTILE TO HAVE A MINIMUM EQUIVALENT OPENING SIZE OF 0.15mm AND A MAXIMUM EQUIVALENT OPENING SIZE OF 0.25mm.
 - 3) WOVEN GEOTEXTILE TO BE REPLACED PERIODICALLY WHEN ACCUMULATED SEDIMENTS INTERFERE WITH DRAINAGE.
 - 4) ALL DIMENSIONS ARE IN MILLIMETRES UNLESS OTHERWISE SHOWN.
- ROADSIDE CATCH BASIN SEDIMENT PROTECTION DETAIL**
 N.T.S.

NO.	REVISION	DATE	BY
2	REVISIONS AS PER OWNER'S ARCHITECT'S LATEST REVISED SITE PLAN RECEIVED ON MARCH 23, 2017	04/13/17	TLM
1	REVISIONS AS PER OWNER'S ARCHITECT'S LATEST REVISED SITE PLAN RECEIVED ON MARCH 9, 2017	03/17/17	TLM

DESIGN	T.L.M.
CHECKED	T.L.M.
DRAWN BY	G.U.
CHECKED	T.L.M.
APPROVED	T.L.M.



PROJECT	667 BANK STREET LOT 2 REGISTERED PLAN M-62 CITY OF OTTAWA
DRAWING TITLE	PROPOSED EROSION AND SEDIMENT CONTROL PLAN

PROJECT No.	816-41	DATE	JULY 2016	DRAWING No.	ESC-1
-------------	--------	------	-----------	-------------	-------

T.L. MAK ENGINEERING CONSULTANTS LTD.
 CONSULTING ENGINEERS