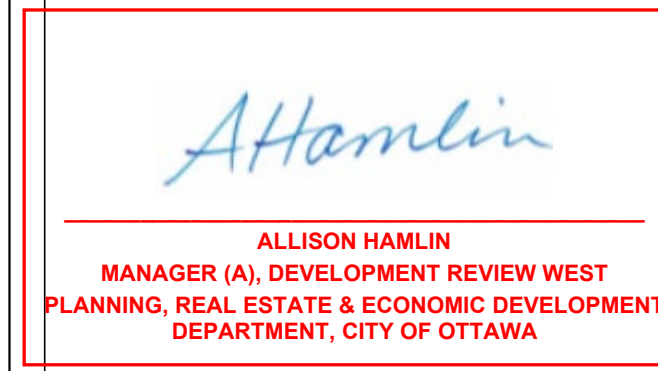


THIS DRAWING MUST NOT BE SCALED.  
 THE CONTRACTOR SHALL VERIFY ALL LEVELS, DATUMS AND DIMENSIONS PRIOR TO COMMENCEMENT OF WORK. ALL ERRORS AND OMISSIONS MUST BE REPORTED TO VINCENT COLIZZA ARCHITECT INC. IMMEDIATELY.  
 ANY REVISIONS TO THE DOCUMENTS OR CHANGES PRIOR TO, DURING, OR AFTER CONSTRUCTION THAT ARE DONE WITHOUT WRITTEN AUTHORIZATION FROM VINCENT COLIZZA ARCHITECT INC. WILL NOT BE THE RESPONSIBILITY OF VINCENT COLIZZA ARCHITECT INC.  
 THIS DRAWING, IN ALL FORMS, ELECTRONIC OR HARD COPY IS THE EXCLUSIVE PROPERTY OF VINCENT COLIZZA ARCHITECT INC. AND MUST NOT BE REPRODUCED WITHOUT WRITTEN PERMISSION. COPYRIGHT ©



**APPROVED**  
 By Allison Hamlin at 4:28 pm, Jul 15, 2022

No.	DESCRIPTION	DATE	CHD
2	ISSUED FOR REVIEW	07APR17	VCP
1	ISSUED FOR REVIEW	06MAR17	VCP
	REVISION DESCRIPTION	DDMTHYY	??

**REVISIONS**

CONTRACTOR SHALL CHECK AND VERIFY ALL DIMENSIONS AND REPORT ANY OMISSIONS OR DISCREPANCIES TO THE ARCHITECT BEFORE PROCEEDING WITH THE WORK.  
 DO NOT SCALE THE DRAWINGS

THIS DRAWING SHALL NOT BE USED FOR CONSTRUCTION PURPOSES UNTIL SIGNED BY THE ARCHITECT.

DATE	-
DRAWN	B.R.
DATE	2016-07-29
CHECKED	V.P.C
DATE PRINTED	2017-03-06

**VINCENT P. COLIZZA ARCHITECT INCORPORATED**

MIXED USE DEVELOPMENT  
 667 BANK STREET  
 OTTAWA, ON

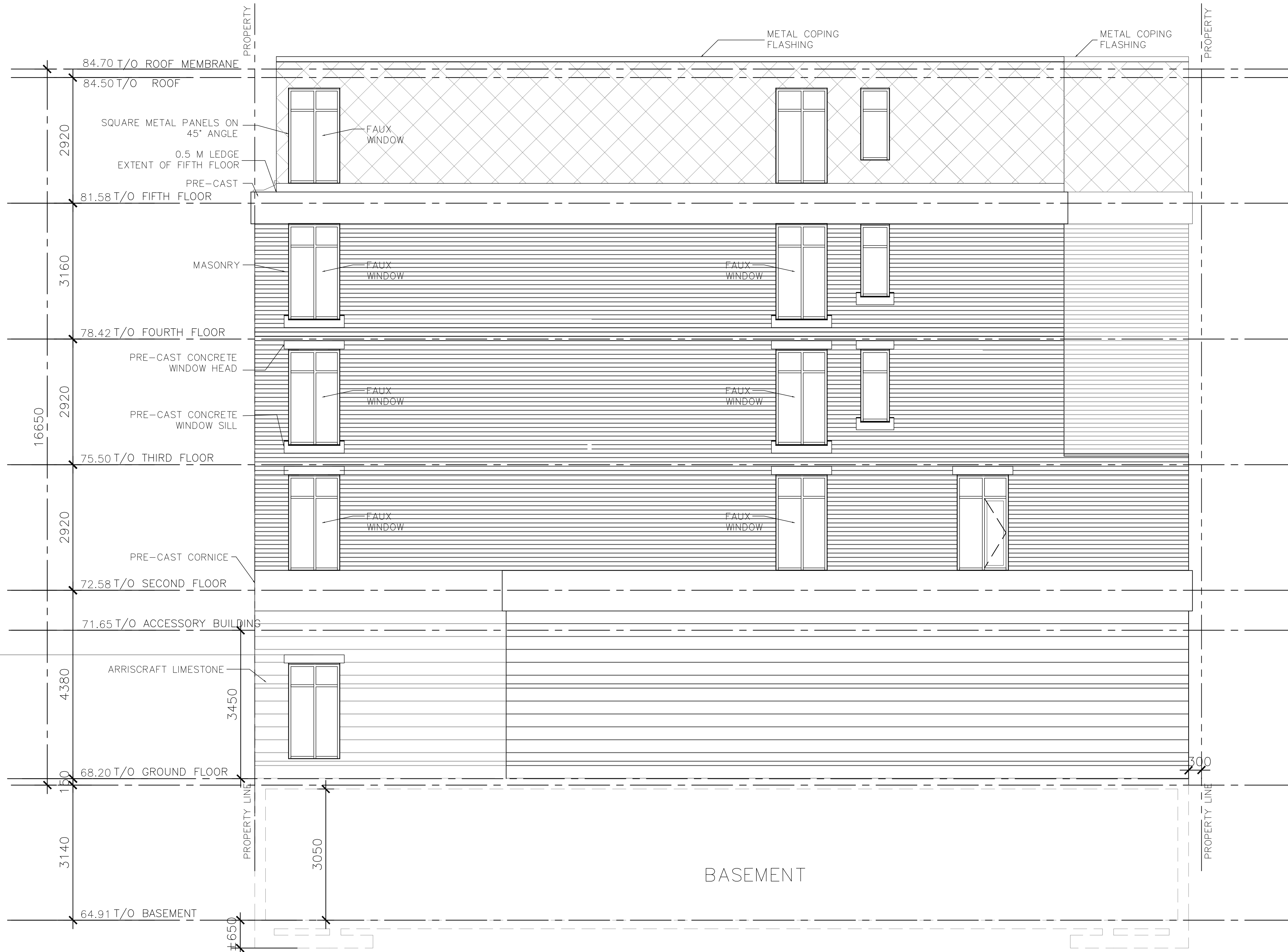
DWG. TITLE  
 WEST ELEVATION

SCALE	DWG. NO.
1:50	A2.1
PROJ. NO.	
1414	



1 WEST ELEVATION  
 A2.1 SCALE 1:50

**D07-12-16-0118**  
**PLAN NUMBER #18558**



THIS DRAWING MUST NOT BE SCALED.  
 THE CONTRACTOR SHALL VERIFY ALL LEVELS, DATUMS AND DIMENSIONS PRIOR TO COMMENCEMENT OF WORK. ALL ERRORS AND OMISSIONS MUST BE REPORTED TO VINCENT COLIZZA ARCHITECT INC. IMMEDIATELY.  
 ANY REVISIONS TO THE DOCUMENTS OR CHANGES PRIOR TO, DURING, OR AFTER CONSTRUCTION THAT ARE DONE WITHOUT WRITTEN AUTHORIZATION FROM VINCENT COLIZZA ARCHITECT INC. WILL NOT BE THE RESPONSIBILITY OF VINCENT COLIZZA ARCHITECT INC.  
 THIS DRAWING, IN ALL FORMS, ELECTRONIC OR HARD COPY IS THE EXCLUSIVE PROPERTY OF VINCENT COLIZZA ARCHITECT INC. AND MUST NOT BE REPRODUCED WITHOUT WRITTEN PERMISSION. COPYRIGHT ©

*Allison Hamlin*  
 ALLISON HAMLIN  
 MANAGER (A), DEVELOPMENT REVIEW WEST  
 PLANNING, REAL ESTATE & ECONOMIC DEVELOPMENT  
 DEPARTMENT, CITY OF OTTAWA

**APPROVED**  
 By Allison Hamlin at 4:28 pm, Jul 15, 2022

No.	REVISION DESCRIPTION	DATE	CHD
3	REVISION	01MAY17	VCP
2	REVISION	07APR17	VCP
1	ISSUED FOR REVIEW	06MAR17	VCP
△	REVISION DESCRIPTION	DDMTHYY	??

**REVISIONS**

CONTRACTOR SHALL CHECK AND VERIFY ALL DIMENSIONS AND REPORT ANY OMISSIONS OR DISCREPANCIES TO THE ARCHITECT BEFORE PROCEEDING WITH THE WORK.  
 DO NOT SCALE THE DRAWINGS

THIS DRAWING SHALL NOT BE USED FOR CONSTRUCTION PURPOSES UNTIL SIGNED BY THE ARCHITECT.

DATE	-
DRAWN	B.R.
DATE	2016-07-29
CHECKED	V.P.C
DATE PRINTED	2017-03-06

**VINCENT P. COLIZZA ARCHITECT INCORPORATED**

MIXED USE DEVELOPMENT  
 667 BANK STREET  
 OTTAWA, ON

DWG. TITLE  
 EAST ELEVATION

SCALE	DWG. NO.
1:50	A2.2
PROJ. NO.	
1414	

1 EAST ELEVATION  
 SCALE 1:50

**D07-12-16-0118**  
**PLAN NUMBER #18558**

THIS DRAWING MUST NOT BE SCALED.  
 THE CONTRACTOR SHALL VERIFY ALL LEVELS, DATUMS AND DIMENSIONS PRIOR TO COMMENCEMENT OF WORK. ALL ERRORS AND OMISSIONS MUST BE REPORTED TO VINCENT COLIZZA ARCHITECT INC. IMMEDIATELY.  
 ANY REVISIONS TO THE DOCUMENTS OR CHANGES PRIOR TO, DURING, OR AFTER CONSTRUCTION THAT ARE DONE WITHOUT WRITTEN AUTHORIZATION FROM VINCENT COLIZZA ARCHITECT INC. WILL NOT BE THE RESPONSIBILITY OF VINCENT COLIZZA ARCHITECT INC.  
 THIS DRAWING, IN ALL FORMS, ELECTRONIC OR HARD COPY IS THE EXCLUSIVE PROPERTY OF VINCENT COLIZZA ARCHITECT INC. AND MUST NOT BE REPRODUCED WITHOUT WRITTEN PERMISSION. COPYRIGHT ©

*Allison Hamlin*

**ALLISON HAMLIN**  
 MANAGER (A), DEVELOPMENT REVIEW WEST  
 PLANNING, REAL ESTATE & ECONOMIC DEVELOPMENT  
 DEPARTMENT, CITY OF OTTAWA

**APPROVED**  
 By Allison Hamlin at 4:28 pm, Jul 15, 2022

No.	DESCRIPTION	DATE	CHK
2	ISSUED FOR REVIEW	07APR17	VCP
1	ISSUED FOR REVIEW	06MAR17	VCP
	REVISION DESCRIPTION	DDMTHYY	??

**REVISIONS**  
 CONTRACTOR SHALL CHECK AND VERIFY ALL DIMENSIONS AND REPORT ANY OMISSIONS OR DISCREPANCIES TO THE ARCHITECT BEFORE PROCEEDING WITH THE WORK.  
 DO NOT SCALE THE DRAWINGS

THIS DRAWING SHALL NOT BE USED FOR CONSTRUCTION PURPOSES UNTIL SIGNED BY THE ARCHITECT.

DATE	-
DRAWN	B.R.
DATE	2016-07-29
CHECKED	V.P.C.
DATE PRINTED	2017-03-06

**VINCENT P. COLIZZA ARCHITECT INCORPORATED**

MIXED USE DEVELOPMENT  
 667 BANK STREET  
 OTTAWA, ON

DWG. TITLE  
 SOUTH ELEVATION

SCALE	DWG. NO.
1:50	A2.3
PROJ. NO.	
1414	

**D07-12-16-0118**  
**PLAN NUMBER #18558**



**1** SOUTH ELEVATION  
 SCALE 1:50



THIS DRAWING MUST NOT BE SCALED.  
 THE CONTRACTOR SHALL VERIFY ALL LEVELS, DATUMS AND DIMENSIONS PRIOR TO COMMENCEMENT OF WORK. ALL ERRORS AND OMISSIONS MUST BE REPORTED TO VINCENT COLIZZA ARCHITECT INC. IMMEDIATELY.  
 ANY REVISIONS TO THE DOCUMENTS OR CHANGES PRIOR TO, DURING, OR AFTER CONSTRUCTION THAT ARE DONE WITHOUT WRITTEN AUTHORIZATION FROM VINCENT COLIZZA ARCHITECT INC. WILL NOT BE THE RESPONSIBILITY OF VINCENT COLIZZA ARCHITECT INC.  
 THIS DRAWING, IN ALL FORMS, ELECTRONIC OR HARD COPY IS THE EXCLUSIVE PROPERTY OF VINCENT COLIZZA ARCHITECT INC. AND MUST NOT BE REPRODUCED WITHOUT WRITTEN PERMISSION. COPYRIGHT ©

*Allison Hamlin*  
 ALLISON HAMLIN  
 MANAGER (A), DEVELOPMENT REVIEW WEST  
 PLANNING, REAL ESTATE & ECONOMIC DEVELOPMENT  
 DEPARTMENT, CITY OF OTTAWA

**APPROVED**  
 By Allison Hamlin at 4:28 pm, Jul 15, 2022

2	ISSUED FOR REVIEW	07APR17	VCP
1	ISSUED FOR REVIEW	06MAR17	VCP
	REVISION DESCRIPTION	DDMTHYY	??
No.	DESCRIPTION	DATE	CHD

**REVISIONS**  
 CONTRACTOR SHALL CHECK AND VERIFY ALL DIMENSIONS AND REPORT ANY OMISSIONS OR DISCREPANCIES TO THE ARCHITECT BEFORE PROCEEDING WITH THE WORK.  
 DO NOT SCALE THE DRAWINGS

THIS DRAWING SHALL NOT BE USED FOR CONSTRUCTION PURPOSES UNTIL SIGNED BY THE ARCHITECT.

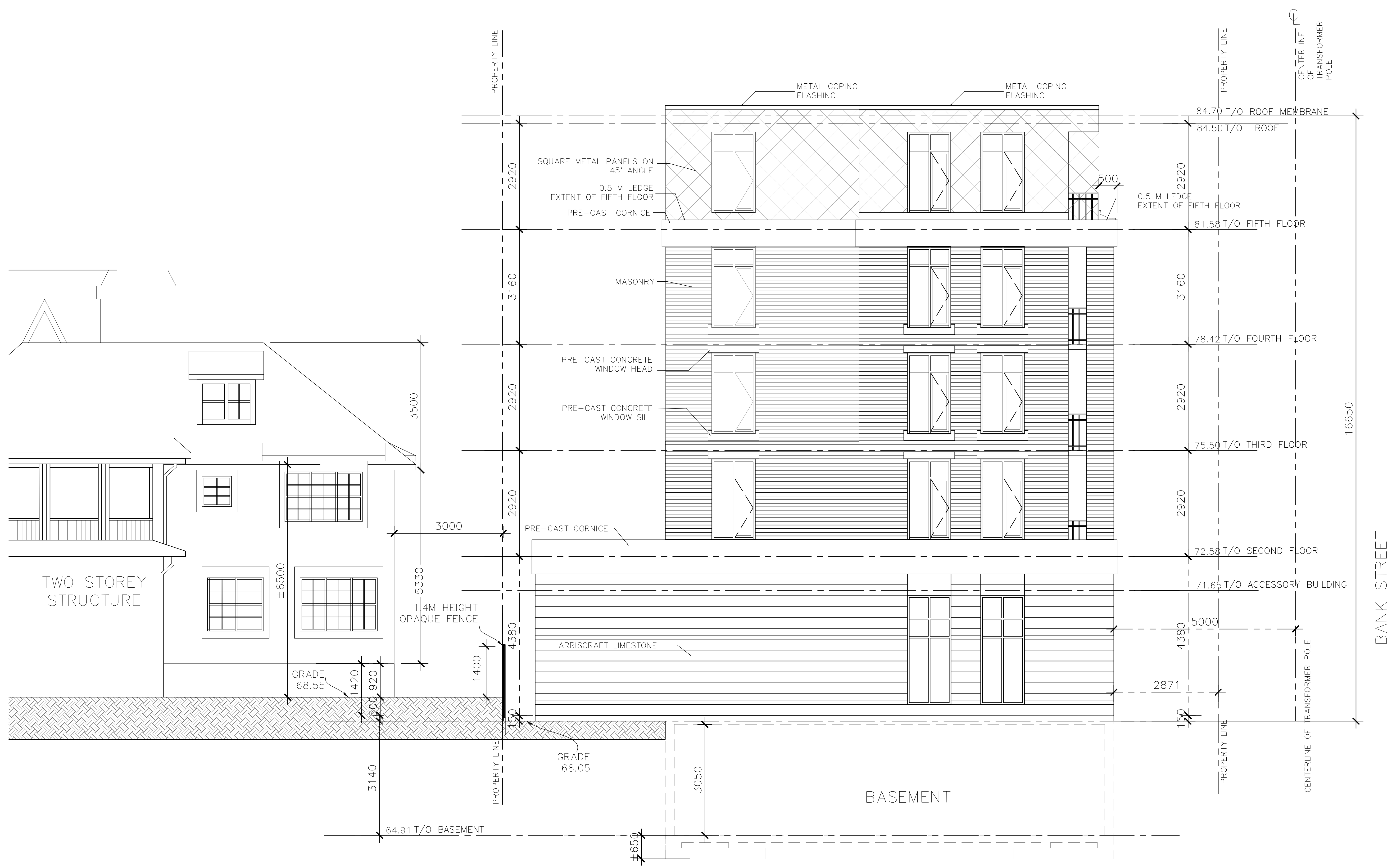
DATE	-
DRAWN	B.R.
DATE	2016-07-29
CHECKED	V.P.C
DATE PRINTED	2017-03-06

**VINCENT P. COLIZZA ARCHITECT INCORPORATED**

MIXED USE DEVELOPMENT  
 667 BANK STREET  
 OTTAWA, ON

DWG. TITLE  
 NORTH ELEVATION

SCALE	1:50	DWG. NO.	A2.4
PROJ. NO.	1414		



1 NORTH ELEVATION  
 SCALE 1:50

**D07-12-16-0118**  
**PLAN NUMBER #18558**