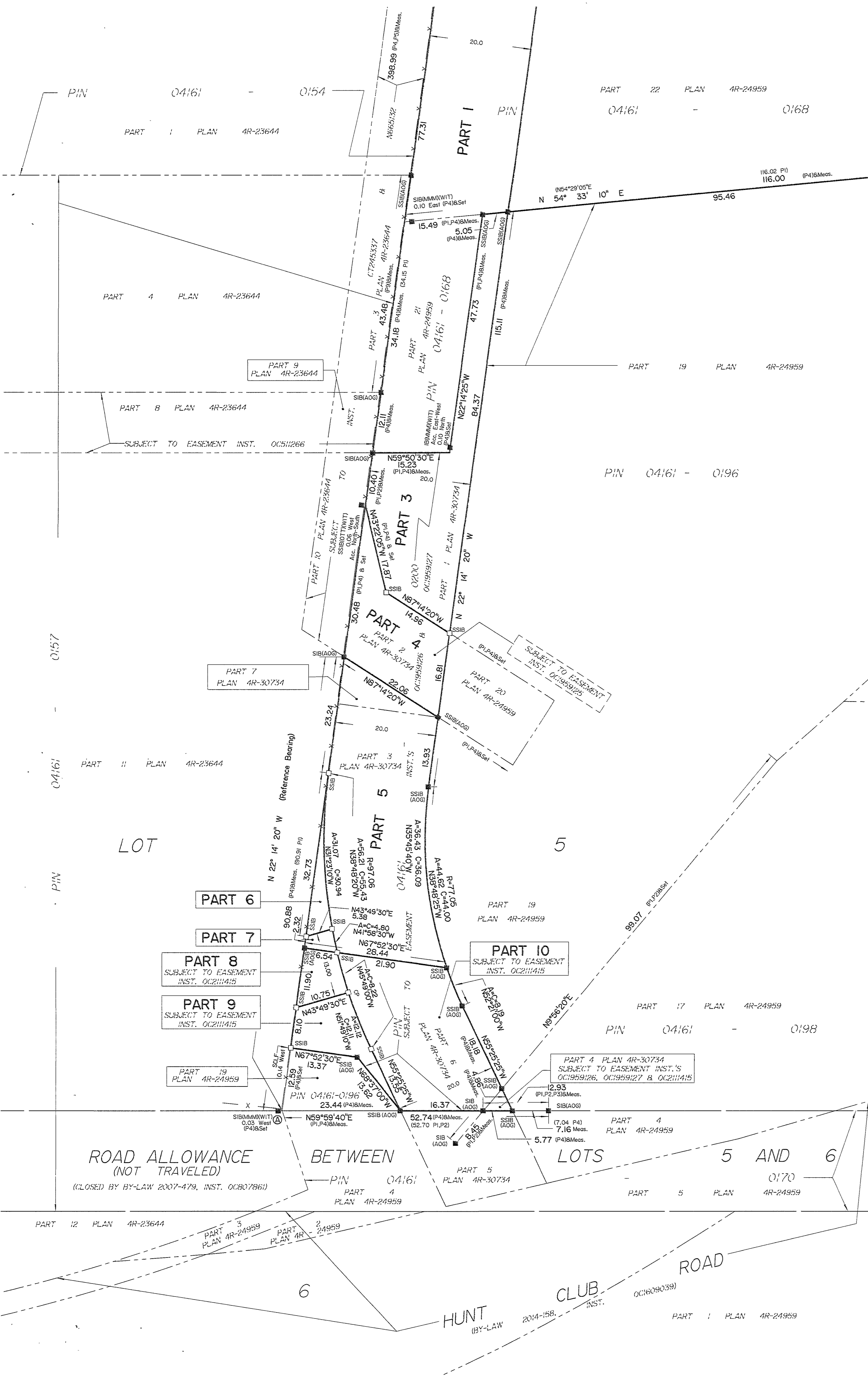
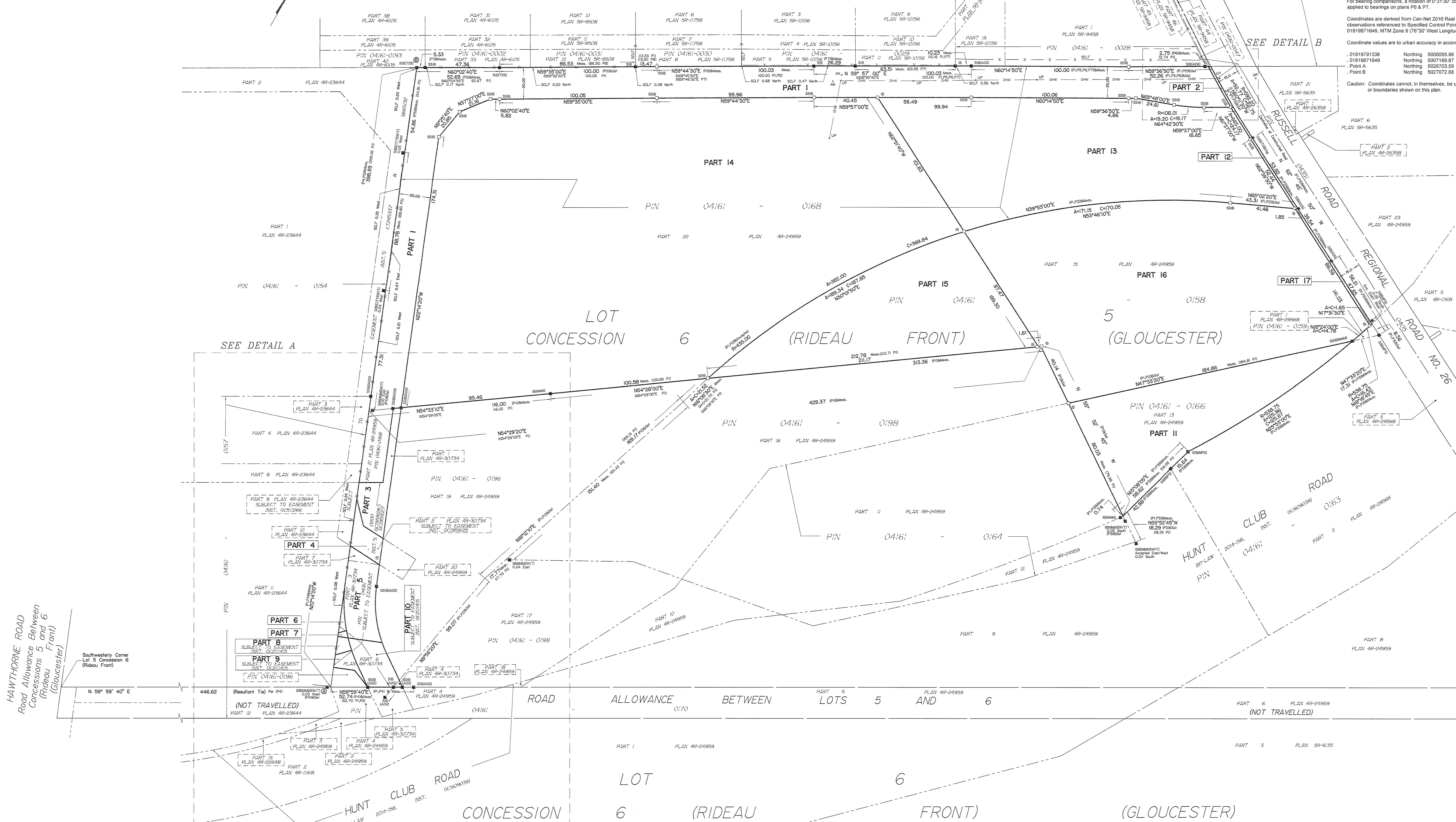


DETAIL A Scale 1:500



HAWTHORNE ROAD
Road Allowance Between
Concessions 5 and 6
(Rideau Front)
(Gloucester)

LOT CONCESSION 6 (RIDEAU FRONT) (GLOUCESTER)



Distances shown on this plan are ground distances and can be converted to grid distances by multiplying by the combined scale factor of 0.999950.
Bearings are grid, derived from Can-Net 2016 Real Time Network GPS observations on reference points A and B, shown hereon, having a bearing of N22°14'20"W and are referenced to Specified Control Points 0191871338 and 0191871649, MTM Zone 9 (76°30' West Longitude) NAD-83 (original).
For bearing compliance, a rotation of 0°13'30" counter-clockwise was applied to bearings on plans P6 & P7.
Coordinates are derived from Can-Net 2016 Real Time Network GPS observations referenced to Specified Control Points 0191871338 and 0191871649, MTM Zone 9 (76°30' West Longitude) NAD-83 (original).
Coordinate values are to urban accuracy in accordance with O.Reg. 218/10.

I REQUIRE THIS PLAN TO BE DEPOSITED UNDER THE LAND TITLES ACT.
DATE: May 3, 2021
REPRESENTATIVE FOR LAND REGISTRATION: Ontario Land Surveyor
DATE: May 4, 2021
REPRESENTATIVE FOR THE LAND TITLES DIVISION OF OTTAWA-CARLETON NO. 4

SCHEDULE			
PART	LOT	CONCESSION	PIN
1			Part of 04161-0168
2			
3			
4			
5			
6			All of 04161-0200
7			
8			
9			
10			
11	PART OF 5	6 (RIDEAU FRONT)	All of 04161-0106
12			
13			Part of 04161-0168
14			
15			
16			
17			All of 04161-0158

Part 4 is subject to easement: INST. OC1969125
Parts 5 to 10 (both inclusive) are subject to easement: INST. OC1969126 & OC1969127
Parts 6, 8 & 10 (both inclusive) are subject to easement: INST. OC2211415
Parts 1, 2, 12, 13, 14 comprise all of PIN 04161-0168.

PLAN OF SURVEY OF
PART OF LOT 5
CONCESSION 6 (Rideau Front)
Geographic Township of Gloucester
CITY OF OTTAWA
Surveyed by Annis, O'Sullivan, Vollebek Ltd.

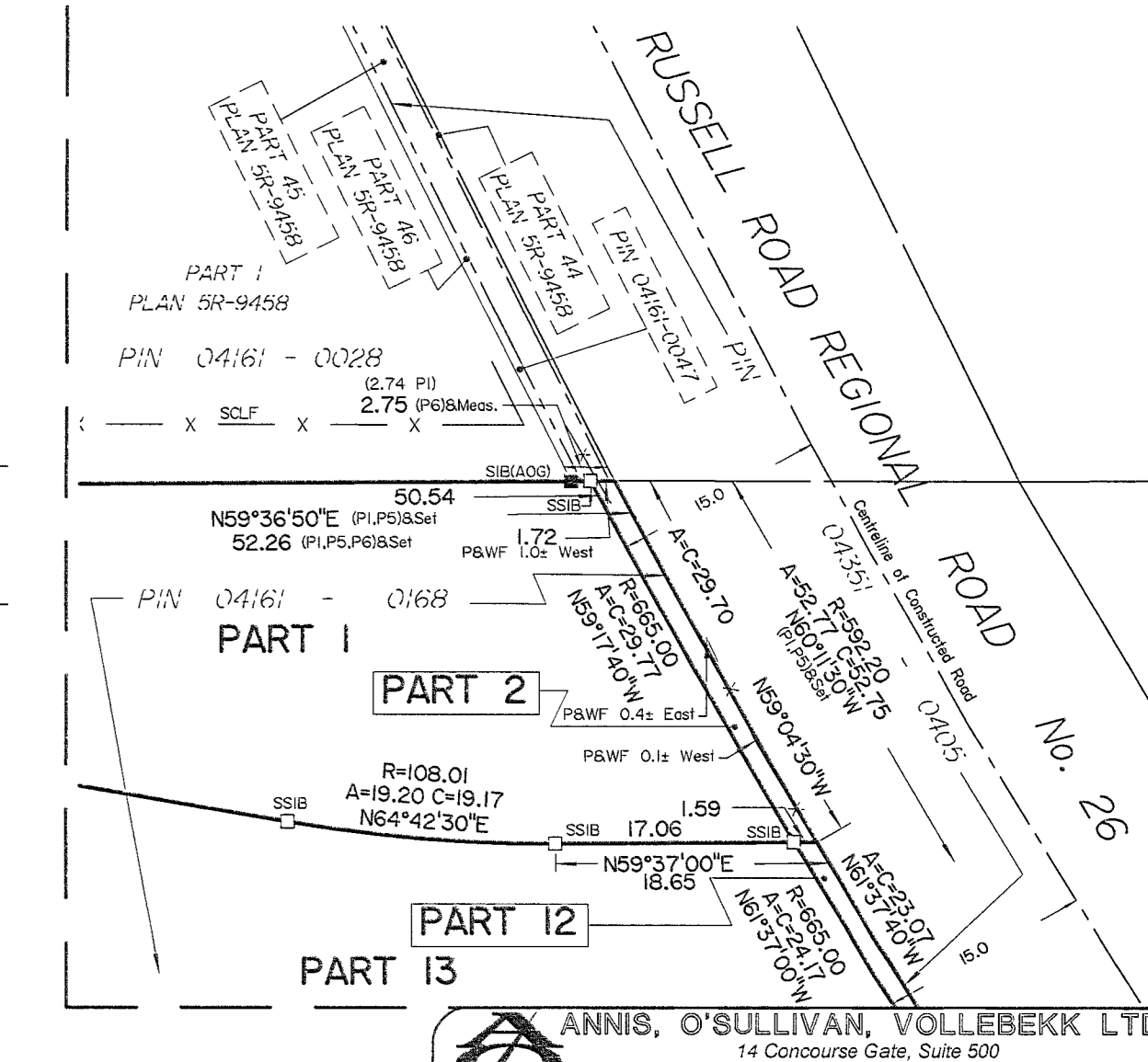
Scale 1: 1000
Metric
DISTANCES AND COORDINATES SHOWN ON THIS PLAN ARE IN METRES AND CAN BE CONVERTED TO FEET BY DIVIDING BY 0.3048.

Surveyor's Certificate
I CERTIFY THAT:
1. This survey and plan are correct and in accordance with the Surveyors Act and the Land Titles Act and the regulations made under them.
2. The survey was completed on the 8th day of April, 2021.

April 9, 2021
Date
Annis, O'Sullivan, Vollebek Ltd.
Andrew J. Broxham
Ontario Land Surveyor

- Notes & Legend
- Denotes Survey Monument Planted
 - Denotes Survey Monument Found
 - SB - Standard Iron Bar
 - SSB - Short Standard Iron Bar
 - IB - Iron Bar
 - (WIT) - Witness
 - (AOS) - Annis, O'Sullivan, Vollebek Ltd
 - Meas - Measured
 - (P1) - Plan 4R-24659
 - (P2) - Plan 4R-11918
 - (P3) - Plan 4R-29688
 - (P4) - Plan 4R-30734
 - (P5) - Plan 5R-6335
 - (P6) - Plan 5R-6468
 - (P7) - Plan 5R-10158
 - (P8) - Plan 5R-6508
 - (P9) - Plan 4R-23644
 - ACC - Accepted
 - SOFL - Security Chain Link Fence
 - UP - Utility Pole
 - AN - Anchor
 - CHW - Overhead Wires
 - PAWF - Post & Wire Fence

DETAIL B Scale 1:500



ANNIS, O'SULLIVAN, VOLLEBEK LTD.
14 Concession Gate, Suite 503
Nepean, Ont. K2E 7S5
Phone: (613) 727-2850 Fax: (613) 727-1079
Email: info@anniso.com
Ontario Land Surveyors (Reg. No. 17730-9) Bound by P.L.S. 3, 5, 6, 8, 9, 10, 11, 12, 13, 14