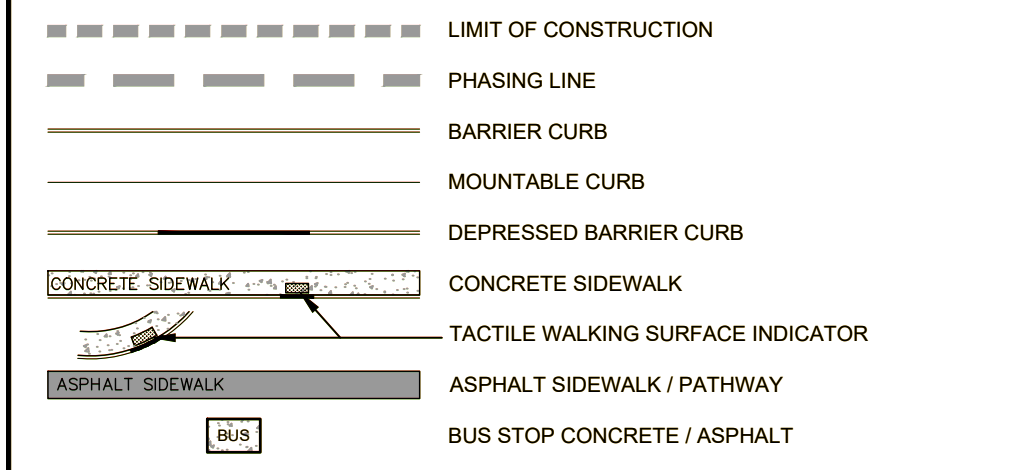
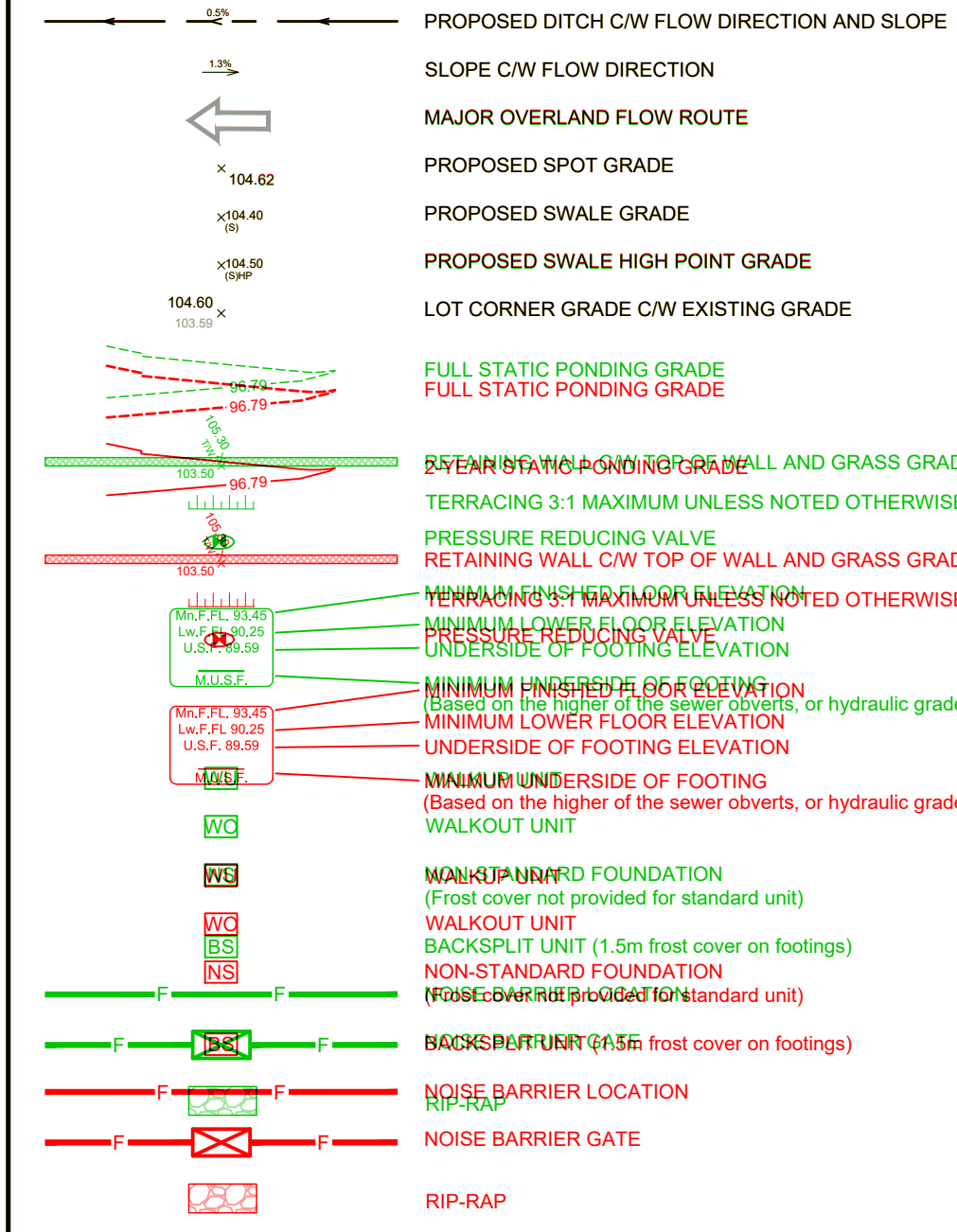


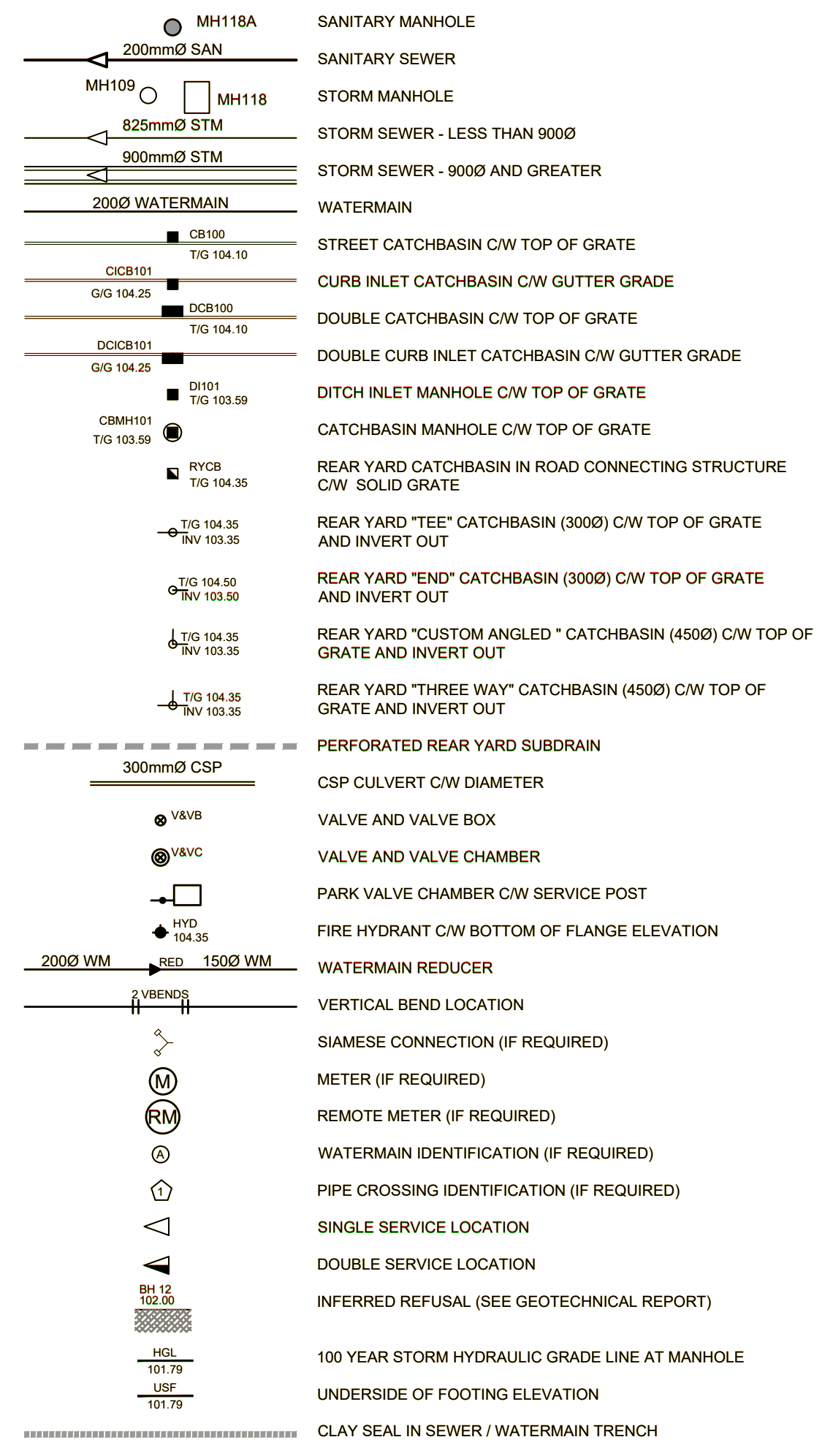
GENERAL LEGEND



GRADING LEGEND



SERVICING LEGEND



NOTES :

- ALL MATERIALS AND CONSTRUCTION IS TO BE IN ACCORDANCE WITH THE CURRENT CITY OF OTTAWA STANDARD DRAWINGS & SPECIFICATIONS OR OPS/DRS IF CITY DRAWINGS AND SPECIFICATIONS DO NOT APPLY.
- THE POSITION OF UNDERGROUND AND ABOVEGROUND SERVICE, UTILITIES AND STRUCTURES ARE NOT NECESSARILY SHOWN ON THE CONTRACT DRAWINGS AND WHERE SHOWN, THE ACCURACY OF THE POSITION OF SUCH SERVICE, UTILITIES AND STRUCTURES IS NOT GUARANTEED. THE CONTRACTOR IS RESPONSIBLE FOR DETERMINING THE EXACT LOCATION, SIZE, MATERIAL AND ELEVATION OF ALL EXISTING SERVICES AND UTILITIES PRIOR TO CONSTRUCTION.
- THE CONTRACTOR SHALL REPORT ALL CONFLICTS, DISCOVERIES OF ERROR AND DISCREPANCIES TO THE ENGINEER.
- THE CONTRACTOR SHALL BE RESPONSIBLE TO PROTECT AND ASSUME RESPONSIBILITY FOR ALL UTILITIES WHETHER OR NOT SHOWN ON THESE DRAWINGS.
- THE CONTRACTOR SHALL BE RESPONSIBLE TO PROTECT ALL LANDS BEYOND THE SITE LIMITS. ANY AREAS BEYOND THE SITE LIMITS, WHICH ARE DISTURBED DURING CONSTRUCTION, SHALL BE REPAIRED AND RESTORED TO ORIGINAL CONDITION OR BETTER, TO THE SATISFACTION OF THE ADJACENT LAND OWNER. THE OWNER, THE OWNERS REPRESENTATIVES AND/OR THE AUTHORITY HAVING JURISDICTION AT THE EXPENSE OF THE CONTRACTOR.
- WHERE NECESSARY, THE CONTRACTOR SHALL IMPLEMENT A TRAFFIC MANAGEMENT PLAN TO THE SATISFACTION OF THE CITY OF OTTAWA. ALL CONSTRUCTION SIGNAGE MUST CONFORM TO THE LATEST VERSION OF THE M.T.O. MANUAL OF UNIFORM TRAFFIC CONTROL DEVICES. ALL TEMPORARY TRAFFIC CONTROL MEASURES MUST BE REMOVED UPON THE COMPLETION OF THE WORKS.
- SHOULD ANY BURIED ARCHAEOLOGICAL REMAINS BE FOUND ON THE PROPERTY DURING CONSTRUCTION ACTIVITIES, THE CONTRACTOR SHALL NOTIFY THE OWNER TO CONTACT THE HERITAGE OPERATIONS UNIT OF THE ONTARIO MINISTRY OF CULTURE. MUST BE NOTIFIED IMMEDIATE, AND WORK WITHIN THE AREA SHALL BE CEASED UNTIL FURTHER NOTICE.
- FOR GEOTECHNICAL INFORMATION REFER TO GEOTECHNICAL REPORT NO PG654-1 PREPARED BY PATERSON GROUP.
- FOR GEOTECH BENCHMARK AND GEOMETRIC LAYOUT OF STREET AND LOTS, REFER TO TOPOGRAPHICAL SURVEY AND PLAN OF SURVEY PREPARED BY ANNE'S O'SULLIVAN VOLLEBERG LTD. BENCHMARK BASED ON CAN-NET VIRTUAL REFERENCE SITE NETWORK.
- FOR SITE PLAN INFORMATION, REFER TO SITE PLAN PREPARED BY RLA ARCHITECTURE.
- FOR NOISE ATTENUATION PLAN REFER TO N-1 PREPARED BY IBI GROUP.
- THESE DRAWINGS ARE NOT TO BE SCALED OR USED FOR LOUPT PURPOSES.
- ROADWAY STRUCTURES REQUIRING GRADE RAISE TO PROPOSED SUB GRADE LEVEL TO BE FILLED WITH ACCEPTABLE NATIVE SAND/BORROW OR IMPORTED OPSS SELECTED SUBGRADE MATERIAL IF NATIVE MATERIAL IS DEFICIENT AS PER RECOMMENDATION OF GEOTECHNICAL ENGINEER.
- IN AREAS WHERE EXISTING GROUND IS BELOW THE PROPOSED ELEVATION OF SEWER AND WATERMANS, GRADE RAISING AND FILLING IS TO BE IN ACCORDANCE WITH THE RECOMMENDATIONS OF THE GEOTECHNICAL REPORT. AS PER CITY GUIDELINES ALL WATERMANS IN FILL AREAS ARE TO BE TIED WITH RESTRAINING JOINTS AND THRUST BLOCKS.
- THE CONTRACTOR SHALL IMPLEMENT THE EROSION AND SEDIMENT CONTROL PLAN PRIOR TO THE COMMENCEMENT OF ANY SITE CONSTRUCTION. ALL EROSION AND SEDIMENT CONTROL MEASURES SHALL BE INSTALLED TO THE SATISFACTION OF THE ENGINEER OR ANY REGULATORY AGENCY. ALL EROSION AND SEDIMENT CONTROL MEASURES SHALL BE MAINTAINED UNTIL VEGETATION IS ESTABLISH OR UNTIL THE START OF A SUBSEQUENT PHASE.
- CONTRACTORS SHALL BE RESPONSIBLE FOR KEEPING CLEAN ALL ROADS WHICH BECOME COVERED IN DUST, DEBRIS AND/OR MUD AS A RESULT OF ITS CONSTRUCTION OPERATIONS.
- ALL PIPE, CULVERTS, STRUCTURES REFER TO NOMINAL INSIDE DIMENSIONS.
- SHOULD CLAY SEALS BE REQUIRED, THEY SHALL BE INSTALLED AS PER THE RECOMMENDATIONS WITHIN THE GEOTECHNICAL REPORT. AS PER CITY GUIDELINES, THE MAXIMUM WIDTH BE EXCEEDED.
- UNLESS SPECIFICALLY NOTED OTHERWISE, PIPE MATERIALS SHALL BE AS FOLLOWS:
 -SANITARY SEWER TO BE PVC DR35
 -PERFORATED STORM SEWERS IN REAR YARDS AND LANDSCAPE AREAS TO BE HOPE
 -STORM SEWERS 375MM DIAMETER AND LESS TO BE PVC DR35
 -STORM SEWERS 450MM DIAMETER AND GREATER TO BE CONCRETE, CLASS AS PER OPSD 807.010 OR 807.050 OR HIGHER.
- ALL CONNECTIONS TO EXISTING WATERMANS ARE TO BE COMPLETED BY CITY WORKERS. CONTRACTOR IS TO EXCAVATE, BACKFILL, COMPACT AND REINSTATE.
- ANY WATERMAIN WITH LESS THAN 2.4M, AND ANY SEWER WITH LESS THAN 2.0M DEPTH OF COVER REQUIRES THERMAL INSULATION AS PER CITY OF OTTAWA STANDARD W22, OR AS APPROVED BY THE ENGINEER.
- ALL STUBBED SEWERS SHALL HAVE PRE-FABRICATED CAPS INSTALLED.
- ALL CATCHBASINS SHALL HAVE A 600MM SUMP. ALL CATCHBASIN MANHOLES, AND ALL STORM MANHOLES WITH OUTLETTING PIPE SIZES LESS THAN 600MM, SHALL HAVE A 300MM SUMP.
- ALL SANITARY MANHOLES SHALL BE EQUIPPED WITH A WATERTIGHT COVER.
- ALL LEADS FOR STREET CATCHBASINS AND CURB INLET CATCHBASINS CONNECTED TO MAIN SHALL BE 200MM PVC DR35 @ MIN 2% SLOPE UNLESS NOTED OTHERWISE. ALL LEADS FOR RYCB'S CONNECTED TO MAIN SHALL BE 200MM PVC DR35 @ MIN 1% SLOPE UNLESS NOTED OTHERWISE.
- UNLESS SPECIFICALLY NOTED OTHERWISE, ALL STREET CATCHBASINS SHALL BE INSTALLED WITH TWO - 3.0M MINIMUM SUBDRAINS INSTALLED LONGITUDINALLY, PARALLEL WITH THE CURB. ALL CATCHBASINS IN ASPHALT AREAS, NOT ADJACENT TO A CURB, SHALL BE INSTALLED WITH FOUR - 3.0M MINIMUM SUBDRAINS INSTALLED ORTHOGONALLY.
- INLET CONTROL DEVICES SHALL BE INSTALLED PRIOR TO COMPLETING THE ROAD BASE (GRANULAR A).
- ALL SEWER SERVICE LATERALS WITH MAINLINE CONNECTIONS DEEPER THAN 5.0M REQUIRE A CONTROLLED SETTLEMENT JOINT.
- EACH BUILDING SHALL BE EQUIPPED WITH A SANITARY AND STORM SEWER BACKWATER VALVE AND CLEAN-OUT ON ITS PRIMARY SERVICE. AS PER ONTARIO BUILDING CODE REQUIREMENTS (BY OTHERS).
- THE HGL PROVIDED IS BASED ON HYDRAULIC MODELING COMPLETED USING PCSWMM AND THE 100 YEAR CHICAGO STORM EVENT (CBH1000).
- THE SUBGRADE OF ALL STRUCTURES, PIPE, ROADS, SIDEWALKS, WALKWAYS, AND BUILDINGS SHALL BE INSPECTED BY THE GEOTECHNICAL ENGINEER PRIOR TO PROCEEDING WITH CONSTRUCTION.
- TOP COURSE ASPHALT SHALL NOT BE PLACED UNTIL THE FINAL CUT/INSPECTION AND NECESSARY REPAIRS HAVE BEEN COMPLETED TO THE SATISFACTION OF THE ENGINEER AND THE CITY OF OTTAWA.
- ALL RETAINING WALLS GREATER THAN 1.0M IN HEIGHT SHALL BE DESIGNED BY A QUALIFIED STRUCTURAL ENGINEER.
- ALL RETAINING WALLS GREATER THAN 0.6M IN HEIGHT REQUIRE A GUARD. ANY GUARD ON A RETAINING WALL GREATER THAN 1.0M IN HEIGHT SHALL BE DESIGNED BY THE QUALIFIED STRUCTURAL ENGINEER RESPONSIBLE FOR THE WALL DESIGN.
- UPON COMPLETION OF THE RETAINING WALL, THE CONTRACTOR SHALL REQUEST A PERFORMANCE CERTIFICATE FROM THE QUALIFIED ENGINEER RESPONSIBLE FOR THE WALL DESIGN.

CLIENT
CLARIDGE HOMES
 210 Gladstone Ave, Ottawa, ON K0P 0Y6

COPYRIGHT
 This drawing has been prepared solely for the intended use, thus any reproduction or distribution for any purpose other than authorized by IBI Group is forbidden. When dimensions shall have precedence over scaled dimensions. Contractors shall verify and be responsible for all dimensions and conditions on the job, and IBI Group shall be allowed of any variations from the dimensions and conditions shown on the drawing. Shop drawings shall be submitted to IBI Group for general conformance before proceeding with fabrication.

IBI Group Professional Services (Canada) Inc.
 is a member of the IBI Group of companies.

ISSUES	No.	DESCRIPTION	DATE
	1	ISSUED FOR CITY REVIEW	2021-12-16
	2	REVISED PER CITY COMMENTS	2022-03-05

NOT FOR CONSTRUCTION

SECTION 10. FOR NOTES, LEGEND, CB TABLE, STREET SECTIONS AND DETAILS

CONSULTANTS

SEAL

W. ZHUANG
 100231427
 2022-08-15
 PROVINCE OF ONTARIO

SEAL

D. Karimopoulos
 2023-08-15
 PROVINCE OF ONTARIO

ROADWAY STRUCTURE:

- ROADWAY STRUCTURE: (.90mm)
- 40mm - SUPERPAVE 12.5 ASPHALTIC CONCRETE
 - 50mm - SUPERPAVE 19.0 ASPHALTIC CONCRETE
 - 150mm - OPSS GRANULAR "A" CRUSHED STONE
 - 450mm - OPSS GRANULAR "B" TYPE II
- PARKING AREAS (.60mm)
- 40mm - SUPERPAVE 12.5 ASPHALTIC CONCRETE
 - 50mm - SUPERPAVE 19.0 ASPHALTIC CONCRETE
 - 150mm - OPSS GRANULAR "A" CRUSHED STONE
 - 300mm - OPSS GRANULAR "B" TYPE II

CATCHBASIN/CATCHBASIN MANHOLE/DITCH INLET DATA

STRUCTURE ID	STORM AREA ID	STRUCTURE	FRAME & COVER	TOP OF GRATE	ELEVATION		OUTLET PIPE		INLET CONTROL DEVICE				OUTLET PIPE		INLET CONTROL DEVICE			COMMENTS		
					INLET	OUTLET	STRUCTURE ID (mm)	STORM AREA ID	100yr Dynamic Head	RESTRICTED FLOW (l/s)	FRAME & COVER	ICD TYPE	TOP OF GRATE	CIRCULAR SIZE (mm dia.)	ORIFICE SIZE (mm dia.)	100yr Dynamic Head	RESTRICTED FLOW (l/s)		ICD TYPE	
CB1	MH126	OPSD 705.010	S19	91.30	89.90	200	PVC DR35	1.630												
CB2	MH125	OPSD 705.010	S19	91.25	89.85	CB1-200	MH126	OPSD 705.010	14.00	S19	IPEX MHF	89.90	200	PVC DR35	1.520					
CB3	MH124	OPSD 705.010	S19	91.25	89.85	CB2-200	MH125	OPSD 705.010	8.00	S19	IPEX MHF	89.85	200	PVC DR35	1.580					
CB4	MH102	OPSD 705.010	S19	91.30	89.90	CB3-200	MH126	OPSD 705.010	8.00	S19	IPEX MHF	89.85	200	PVC DR35	1.580					
CB5	MH101	OPSD 705.010	S19	91.17	89.77	CB4-200	MH126	OPSD 705.010	8.00	S19	IPEX MHF	89.90	200	PVC DR35	1.510	8.00	CUSTOM IPEX LMF			
CB6	MH100	OPSD 705.010	S19	91.16	89.76	CB5-200	MH126	OPSD 705.010	8.00	S19	IPEX MHF	89.77	200	PVC DR35	1.530	8.00	CUSTOM IPEX LMF			
CB7	MH113	OPSD 705.010	S19	91.25	89.85	CB6-200	MH126	OPSD 705.010	12.00	S19	IPEX MHF	89.76	200	PVC DR35	1.450	8.00	CUSTOM IPEX LMF			
CB8	CBM09	OPSD 705.010	S19	91.33	89.93	CB7-200	MH126	OPSD 705.010	18.00	S19	IPEX MHF	89.85	200	PVC DR35	1.560					
CBM09	CBM08	OPSD 705.010	S19	91.35	89.95	CB8-200	CBM09	OPSD 705.010	12.00	S19	IPEX MHF	89.93	200	PVC DR35	1.500	18.00	IPEX MHF	83		
CB10	MH110	OPSD 705.010	S19	91.35	89.95	CB9-200	CBM09	OPSD 705.010	23.00	S19	IPEX MHF	89.95	200	PVC DR35	1.590	12.00	CUSTOM IPEX MHF			
CB11	MH127	OPSD 705.010	S19	91.20	89.80	CB10-200	MH126	OPSD 705.010	12.00	S19	IPEX MHF	89.95	200	PVC DR35	1.510	23.00	CUSTOM IPEX HF			
CB12	MH127B	OPSD 705.010	S19	91.20	89.80	CB11-200	MH126	OPSD 705.010	12.00	S19	IPEX MHF	89.80	200	PVC DR35	1.560					
CB13	MH130	OPSD 705.010	S19	91.30	89.90	CB12-200	MH126	OPSD 705.010	8.00	S19	IPEX MHF	89.90	200	PVC DR35	1.550	8.00	CUSTOM IPEX LMF			
CBM14	MH111	OPSD 705.010	S19	91.35	89.95	CB13-200	MH126	OPSD 705.010	6.00	S19	IPEX MHF	89.95	200	PVC DR35	1.570	6.00	IPEX LMF			
Temp CB	MH109	OPSD 705.010	S19	91.25	89.70	Temp CB75	MH109	OPSD 705.010	28.00	S19	IPEX MHF	89.85	200	PVC DR35	1.600	28.00	IPEX MHF	102		
CCB7	MH100C	S31	S31	91.25	89.85	CCB7-200	MH100C	1.410	S31	10.00	S31	IPEX MHF	89.85	200	PVC DR35	1.310	10.00	CUSTOM IPEX MHF		
ECB8	MH100D	S31	S31	91.25	89.85	ECB8-200	MH100D	1.610	S31	10.00	S31	IPEX MHF	89.85	200	PVC DR35	1.510	10.00	CUSTOM IPEX MHF		
TCB5	MH109B	S31	S31	91.40	90.00	TCB5-200	MH109B	1.680	S31	8.00	S31	IPEX MHF	90.00	200	PVC DR35	1.590	8.00	CUSTOM IPEX MHF		
MH126	MH126	OPSD 705.010	S25 & S24.1	91.48	86.90	MH126	MH126	OPSD 705.010	14.00	S25 & S24.1	IPEX MHF	86.90	450	CONC	4.844	14.00	CUSTOM IPEX MHF			
MH128	MH127	OPSD 705.010	S25 & S24.1	91.52	87.53	MH128	MH127	OPSD 705.010	12.00	S25 & S24.1	IPEX MHF	87.53	450	CONC	4.156	12.00	CUSTOM IPEX MHF			
MH134	MH113	OPSD 705.010	S25 & S24.1	91.47	87.13	MH134	MH113	OPSD 705.010	12.00	S25 & S24.1	IPEX MHF	87.13	600	CONC	4.678	12.00	CUSTOM IPEX MHF			

PROJECT
ZENS - 4624 SPRATT

PROJECT NO:
135856

DRAWN BY:
D.D./S.G.

CHECKED BY:
A.Z.

PROJECT MGR:
R.M.

APPROVED BY:
R.M./D.Y.

GENERAL NOTES, LEGEND AND CB DATA TABLE

SHEET NUMBER **C-010** ISSUE **1**



CLIENT
CLARIDGE HOMES
 210 Gladstone Ave. Ottawa, On K0P 0Y6

COPYRIGHT
 This drawing has been prepared solely for the intended use, thus any reproduction or distribution for any purpose other than authorized by IBI Group is forbidden. When dimensions shall have precedence over scaled dimensions. Contractors shall verify and be responsible for all dimensions and conditions on the job, and IBI Group shall be informed of any variations from the dimensions and conditions shown on the drawing. Shop drawings shall be submitted to IBI Group for general conformance before proceeding with fabrication.

IBI Group Professional Services (Canada) Inc.
 is a member of the IBI Group of companies.

ISSUES	No.	DESCRIPTION	DATE
	1	ISSUED FOR CITY REVIEW	2024-04-10
	2	REVISED PER CITY COMMENTS	2024

NOT FOR CONSTRUCTION

FOR NOTES, LEGEND, CB TABLE, STREET SECTIONS AND DETAILS

CONSULTANTS

SEAL

LICENCED PROFESSIONAL ENGINEER
 J.D. K. Yarnopoulos
 2022-08-15
 PROVINCE OF ONTARIO

LICENCED PROFESSIONAL ENGINEER
 W. ZHUANG
 100231427
 2022-08-15
 PROVINCE OF ONTARIO

IBI GROUP
 Suite 400 - 333 Preston Street
 Ottawa ON K1S 5N4 Canada
 Tel: 613 225 1311 / 613 241 3300 Fax: 613 225 9868
 ibigroup.com

PROJECT
ZENS - 4624 SPRATT

PROJECT NO:
 135856

DRAWN BY:
 D.D./S.G.

PROJECT MGR:
 R.M.

CHECKED BY:
 A.Z.

APPROVED BY:
 R.M./D.Y.

SHEET TITLE
GRADING PLAN

SHEET NUMBER
C-200

ISSUE
1

CITY FILE No. D07-12-22-0001

CITY PLAN No. 18327



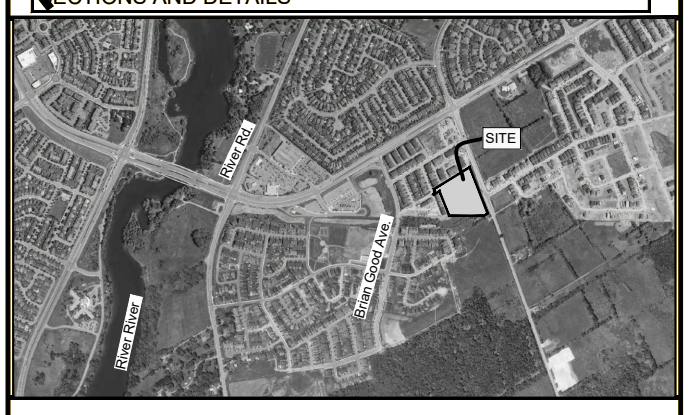
CLIENT
CLARIDGE HOMES
 210 Gladstone Ave. Ottawa, On K0P 0Y6

COPYRIGHT
 This drawing has been prepared solely for the intended use, thus any reproduction or distribution for any purpose other than authorized by IBI Group is forbidden. When dimensions shall have precedence over scaled dimensions. Contractors shall verify and be responsible for all dimensions and conditions on the job, and IBI Group shall be informed of any variations from the dimensions and conditions shown on the drawing. Shop drawings shall be submitted to IBI Group for general conformance before proceeding with fabrication.
 IBI Group Professional Services (Canada) Inc.
 is a member of the IBI Group of companies.

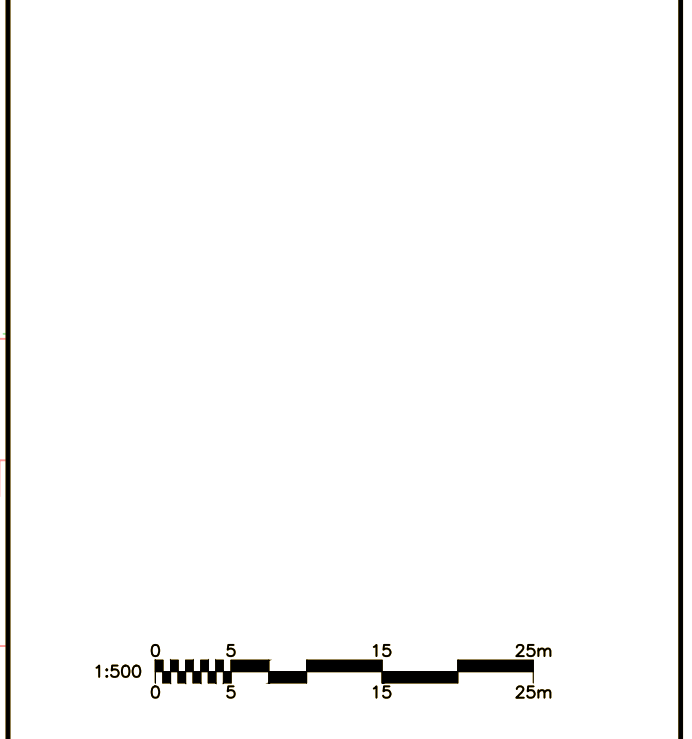
ISSUES	No.	DESCRIPTION	DATE
	1	ISSUED FOR CITY REVIEW	2022-11-15
	2	REVISED PER CITY COMMENTS	2023-01-10

NOT FOR CONSTRUCTION

FOR NOTES, LEGEND, CB TABLE, STREET SECTIONS AND DETAILS



CONSULTANTS



SEAL

LICENSÉ PROFESSIONNEL (INGÉNIEUR)
 J.D. K. Yarnopoulos
 2022-08-15
 PROVINCE OF ONTARIO

LICENSÉ PROFESSIONNEL (INGÉNIEUR)
 W. ZHUANG
 100231427
 2022-08-15
 PROVINCE OF ONTARIO

IBI GROUP
 Suite 400 - 333 Preston Street
 Ottawa ON K1S 5N4 Canada
 Tel: 613 225 1311 / 613 241 3300 Fax: 613 225 9868
 ibigroup.com

PROJECT
ZENS - 4624 SPRATT

PROJECT NO:
135856

DRAWN BY:
D.D.S.G.

PROJECT MGR:
R.M.

CHECKED BY:
A.Z.

APPROVED BY:
R.M./D.Y.

SHEET TITLE
SANITARY DRAINAGE AREA PLAN

SHEET NUMBER
C-400

ISSUE
1

File Location: J:\135856_4624_Spratt\17_0_Production\03_Design\04_Civil\SheetC-400_SANITARY DRAINAGE AREA PLAN.dwg Last Saved: 2023-01-10 10:22:27 AM User: WZHUANG
 CITY FILE No. D07-12-02-0001
 SCALE CHECK



CLIENT

COPYRIGHT
 This drawing has been prepared solely for the intended use, thus any reproduction or distribution for any purpose other than authorized by IBI Group is forbidden. When dimensions shall have precedence over scaled dimensions. Contractors shall verify and be responsible for all dimensions and conditions on the job, and IBI Group shall be informed of any variations from the dimensions and conditions shown on the drawing. Shop drawings shall be submitted to IBI Group for general conformance before proceeding with fabrication.

IBI Group Professional Services (Canada) Inc.
 is a member of the IBI Group of companies.

ISSUES

No.	DESCRIPTION	DATE
1	ISSUED FOR CITY REVIEW	2021-12-15
2	REVISED PER CITY COMMENTS	2022-08-15

SECTION 10. FOR NOTES, LEGEND, CB TABLE, STREET SECTIONS AND DETAILS

CONSULTANTS

SCALE
 1:500

SEAL

PROJECT
ZENS - 4624 SPRATT

PROJECT NO: 135856
DRAWN BY: D.D./S.G.
PROJECT MGR: R.M.

CHECKED BY: A.Z.
APPROVED BY: R.M./D.Y.

SHEET TITLE
STORM DRAINAGE AREA PLAN

SHEET NUMBER C-500 **ISSUE** 1

CITY FILE No. D07-12-00001
 File Location: J:\135856_4624_Spratt\17_0_Production\7_03_Design\04_Civil\Sheet\C-500 STORM DRAINAGE AREA PLAN.dwg Last Saved: December 15, 2021, by ddre
 Plotter: Windows_AutoCAD (v2021) 132144_AutoCAD/Plotter/Utility/Default



CLIENT
CLARIDGE HOMES
 210 Gladstone Ave. Ottawa, On K0P 0Y6

COPYRIGHT
 This drawing has been prepared solely for the intended use, thus any reproduction or distribution for any purpose other than authorized by IBI Group is forbidden. Written dimensions shall have precedence over scaled dimensions. Contractors shall verify and be responsible for all dimensions and conditions on the job, and IBI Group shall be informed of any variations from the dimensions and conditions shown on the drawing. Shop drawings shall be submitted to IBI Group for general conformance before proceeding with fabrication.
 IBI Group Professional Services (Canada) Inc.
 is a member of the IBI Group of companies.

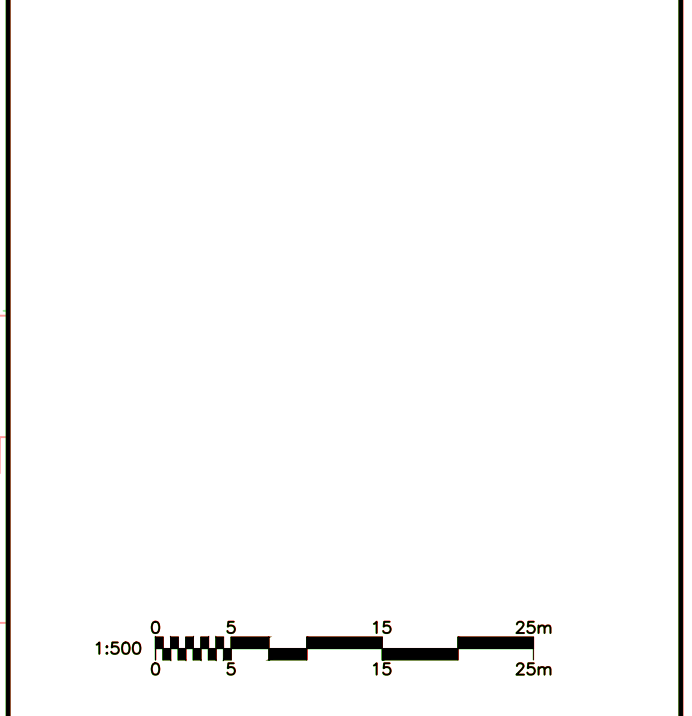
ISSUES	No.	DESCRIPTION	DATE
	1	ISSUED FOR CITY REVIEW	2022-08-15
	2	REVISED PER CITY COMMENTS	2022-09-15

NOT FOR CONSTRUCTION

FOR NOTES, LEGEND, CB TABLE, STREET SECTIONS AND DETAILS



CONSULTANTS



SEAL

LICENCED PROFESSIONAL ENGINEER
 J.D. K. Yarnopoulos
 2022-08-15
 PROVINCE OF ONTARIO

LICENCED PROFESSIONAL ENGINEER
 W. ZHUANG
 100231427
 2022-08-15
 PROVINCE OF ONTARIO

IBI GROUP
 Suite 400 - 333 Preston Street
 Ottawa ON K1S 5N4 Canada
 Tel: 613 225 1311 / 613 241 3300 Fax: 613 225 9868
 ibigroup.com

PROJECT
ZENS - 4624 SPRATT

PROJECT NO:
 135856

DRAWN BY:
 D.D.S.G.

CHECKED BY:
 A.Z.

PROJECT MGR:
 R.M.

APPROVED BY:
 R.M.D.Y.

SHEET TITLE
PONDING PLAN

SHEET NUMBER
C-600

ISSUE
1

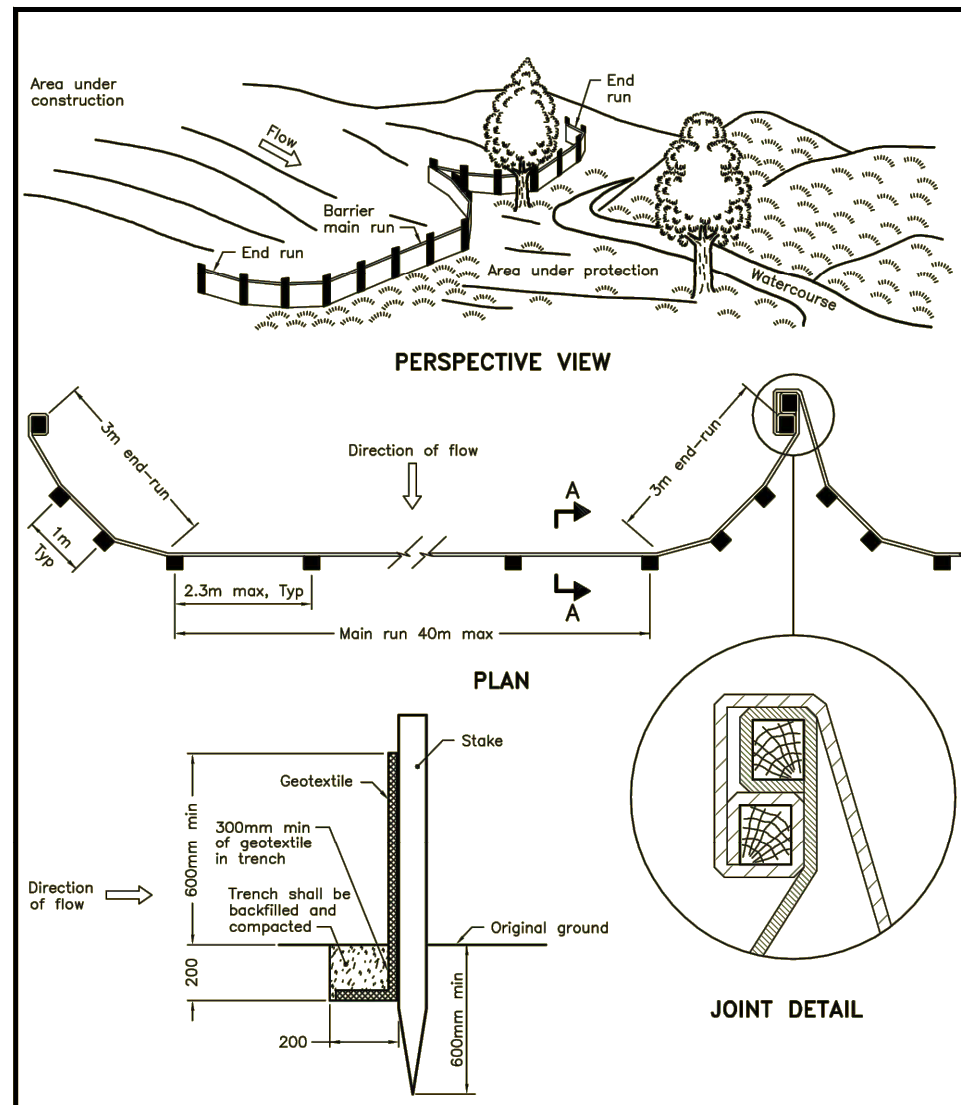
LEGEND:

EMERGENCY OVERLAND FLOW ROUTE

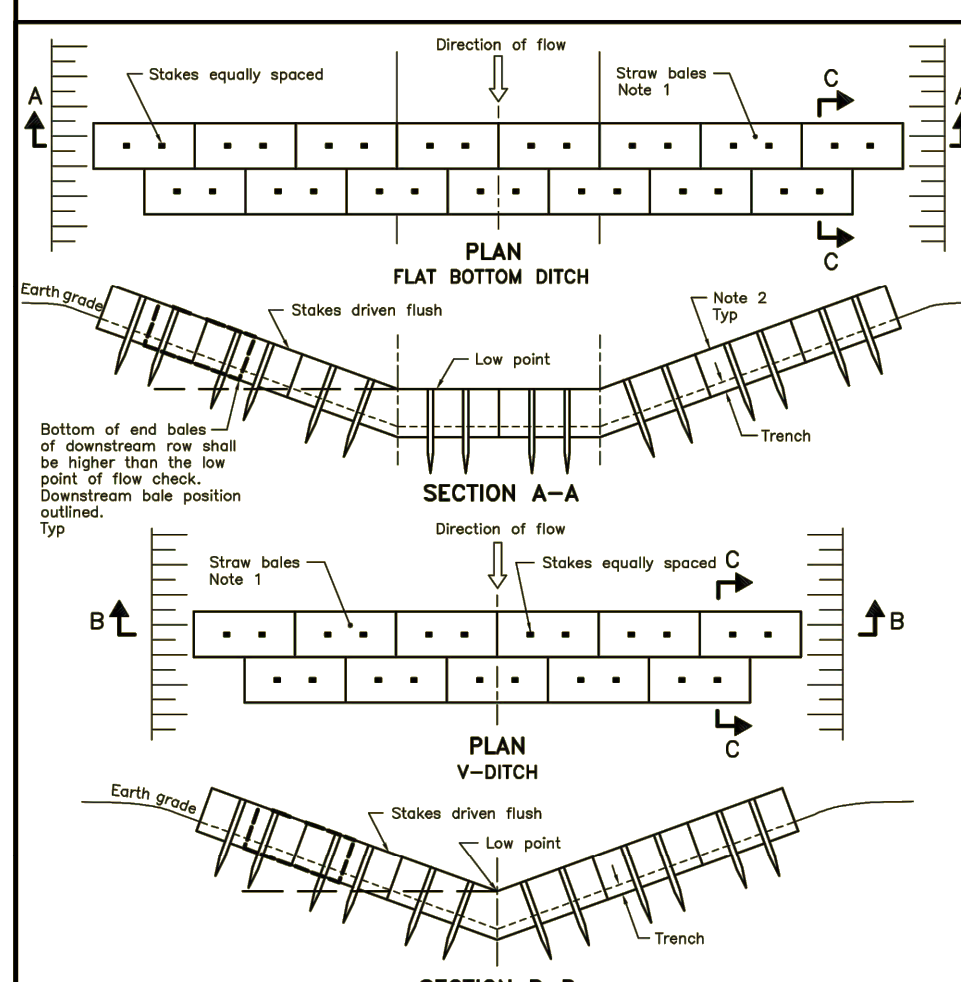
FULL STATIC PONDING GRADE

2-YEAR STATIC PONDING GRADE

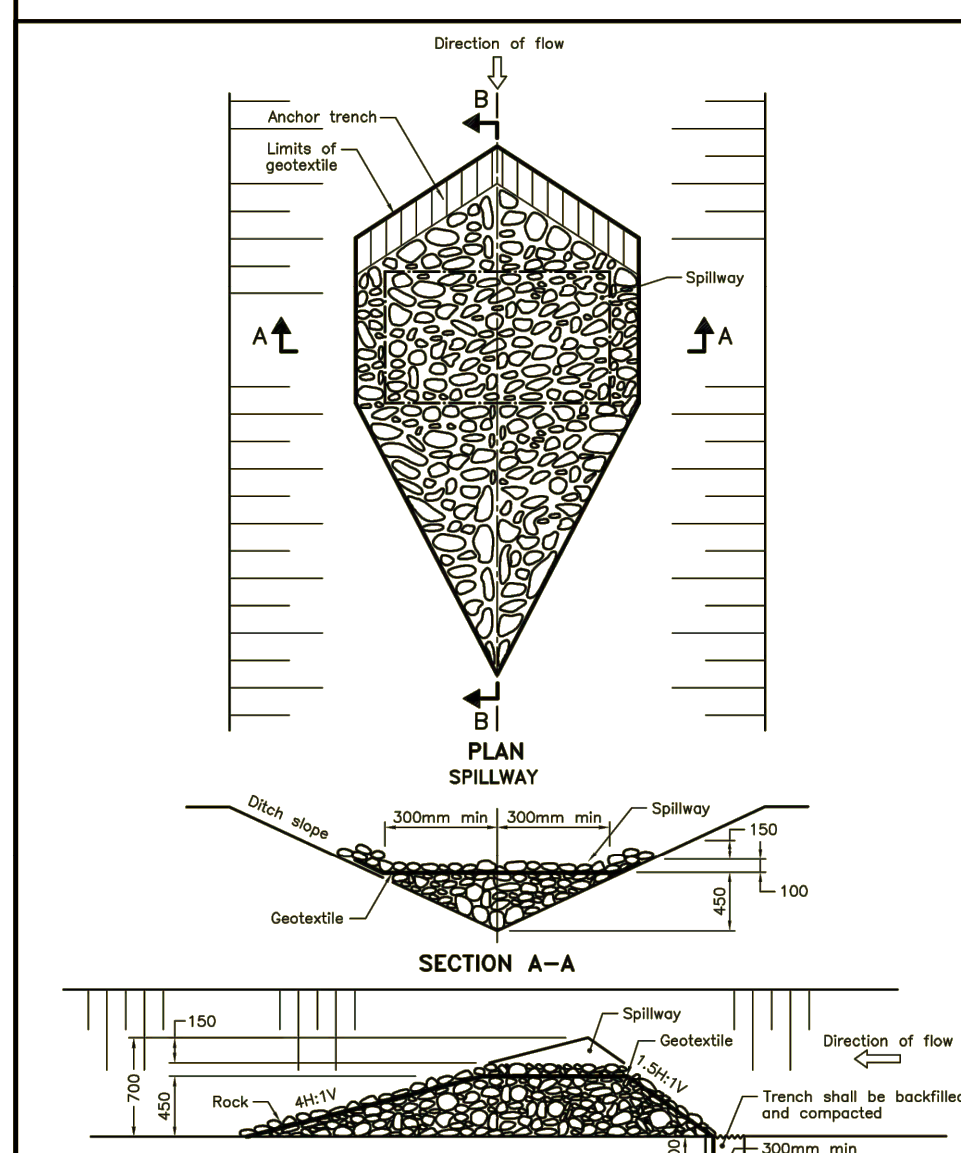
CITY FILE No. D07-12-22-00031
 SCALE CHECK
 File Location: \\135856_4624_Spratt\7_0_Production\7_03_Design\04_Civil\Sheets\C-600_PONDING PLAN.dwg
 Last Saved: 2022-09-15 10:40:00 AM
 User: R.M.D.Y.



SECTION A-A
NOTE: A All dimensions are in millimetres unless otherwise shown.
ONTARIO PROVINCIAL STANDARD DRAWING Nov 2015 Rev 2
LIGHT-DUTY SILT FENCE BARRIER
OPSD 219.110



SECTION A-A
SECTION B-B
NOTE: 1 Number of bales varies and shall suit ditch.
2 Straw bales shall be butted tightly against adjoining bales and shaped to conform to the sides of the ditch to prevent water flow through barrier.
A All dimensions are in millimetres unless otherwise shown.
ONTARIO PROVINCIAL STANDARD DRAWING Nov 2015 Rev 2
STRAW BALE FLOW CHECK DAM
OPSD 219.180



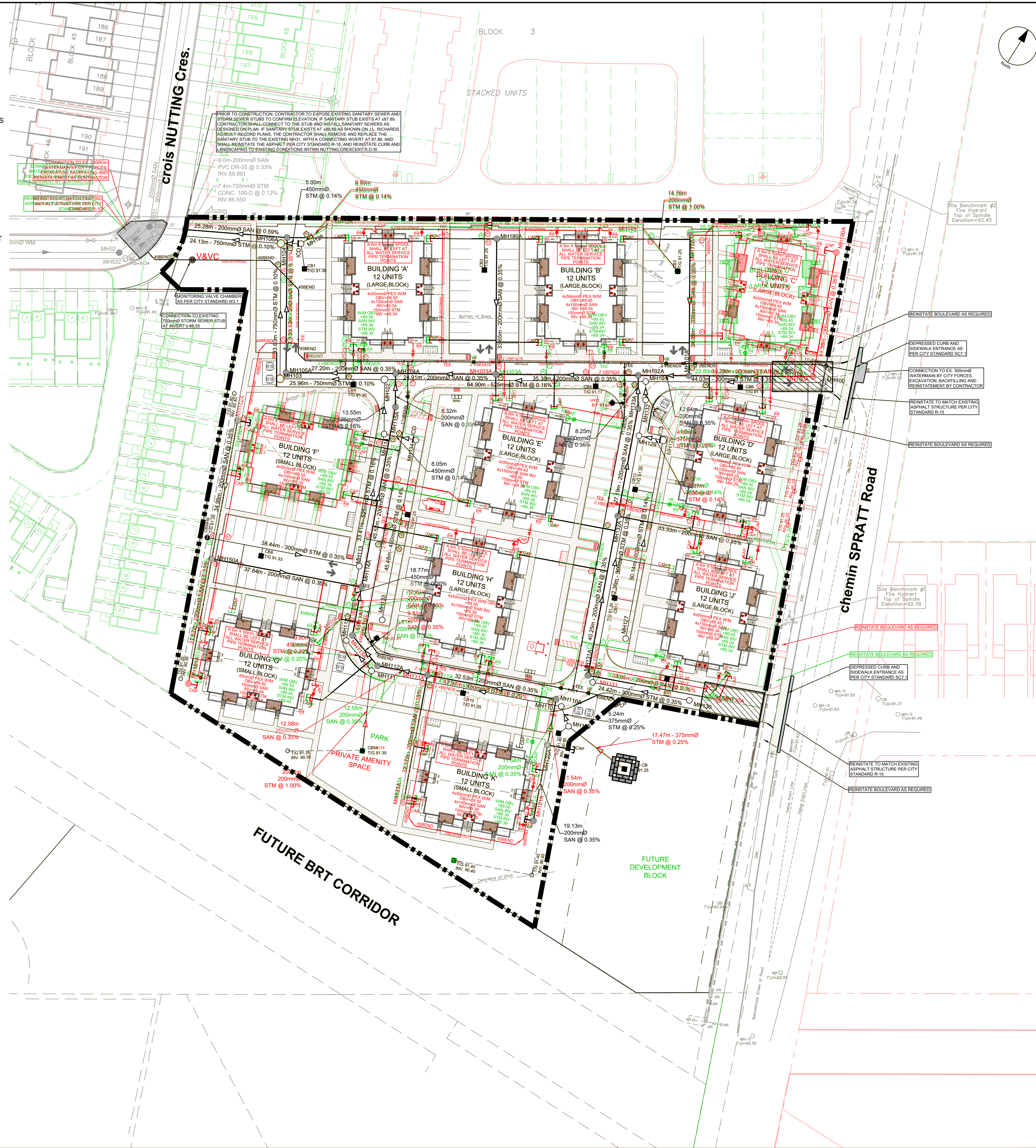
SECTION A-A
SECTION B-B
NOTE: A All dimensions are in millimetres unless otherwise shown.
ONTARIO PROVINCIAL STANDARD DRAWING Nov 2015 Rev 2
TEMPORARY ROCK FLOW CHECK DAM V-DITCH
OPSD 219.210

NOTES:

1. THE CONTRACTOR SHALL IMPLEMENT BEST MANAGEMENT PRACTICES, TO PROVIDE FOR PROTECTION OF THE AREA DRAINAGE SYSTEM AND THE RECEIVING WATERCOURSE, DURING CONSTRUCTION ACTIVITIES. THE CONTRACTOR ACKNOWLEDGES THAT FAILURE TO IMPLEMENT APPROPRIATE EROSION AND SEDIMENT CONTROL MEASURES MAY BE SUBJECT TO PENALTIES IMPOSED BY ANY APPLICABLE REGULATORY AGENCY.
2. SILT FENCE TO BE ERRECTED PRIOR TO EARTH WORKS BEING COMMENCED. SILT FENCE TO BE MAINTAINED UNTIL VEGETATION IS ESTABLISHED OR UNTIL START OF SUBSEQUENT PHASE.
3. SILT SACK TO BE PLACED AND MAINTAINED UNDER COVER OF ALL CATCHBASINS. GEOTEXTILE SILT SACK IN STREET C&S TO REMAIN UNTIL ALL CURBS ARE CONSTRUCTED. GEOTEXTILE FABRIC IN RYCBs TO REMAIN UNTIL VEGETATION IS ESTABLISHED. ALL CATCHBASINS TO BE REGULARLY INSPECTED AND CLEANED, AS NECESSARY, UNTIL SOD AND CURBS ARE CONSTRUCTED.
4. WORKS NOTED ABOVE ARE TO BE INSTALLED, INSPECTED, MAINTAINED AND ULTIMATELY REMOVED BY SERVICING CONTRACTOR.
5. THIS IS A "LIVING DOCUMENT" AND MAY BE MODIFIED IN THE EVENT THE PROPOSED CONTROL MEASURES ARE INSUFFICIENT.
6. SEE DRAWING C-010 FOR ADDITIONAL DETAILS AND NOTES.

LEGEND:

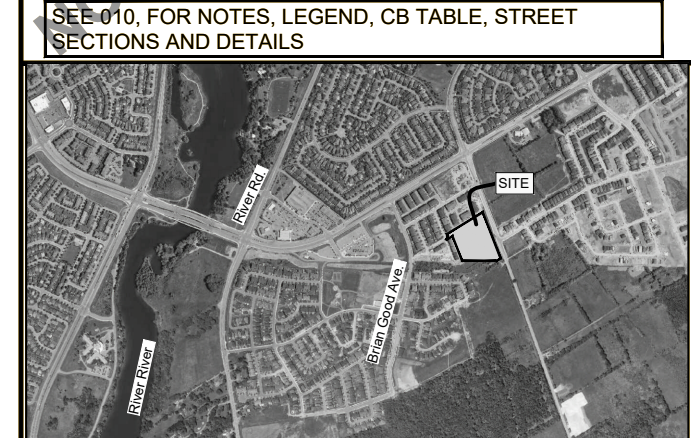
- LIGHT DUTY SILT FENCE AS PER OPSD-219.110
- SNOW FENCE
- STRAW BALE CHECK DAM AS PER OPSD-219.180
- ROCK CHECK DAM AS PER OPSD-219.210
- SILT SACK PLACED UNDER EXISTING CB COVER
- TEMPORARY MUD MAT 0.15m THICK 50mm CLEAR STONE ON NON WOVEN FILTER CLOTH



CLIENT
CLARIDGE HOMES
210 Gladstone Ave. Ottawa, On K0P 0Y6

COPYRIGHT
This drawing has been prepared solely for the intended use, thus any reproduction or distribution for any purpose other than authorized by IBI Group is forbidden. When dimensions shall have precedence over scaled dimensions. Contractors shall verify and be responsible for all dimensions and conditions on the job, and IBI Group shall be informed of any variations from the dimensions and conditions shown on the drawing. Shop drawings shall be submitted to IBI Group for general conformance before proceeding with fabrication.
IBI Group Professional Services (Canada) Inc.
is a member of the IBI Group of companies.

ISSUES	No.	DESCRIPTION	DATE
	1	ISSUED FOR CITY REVIEW	2021-12-15
	2	REVISED PER CITY COMMENTS	2022-01-10



CONSULTANTS

SCALE: 1:500
1 5 10 15 20 25m

SEAL
L. J. D. K. YARNOPOULOS
PROFESSIONAL ENGINEER
PROVINCE OF ONTARIO
2022-08-15

W. ZHUANG
PROFESSIONAL ENGINEER
PROVINCE OF ONTARIO
2022-08-15

IBI GROUP
Suite 400 - 333 Preston Street
Ottawa ON K1S 5N4 Canada
tel: 613 225 1311 / 613 241 3300 fax: 613 225 9868
ibigroup.com

PROJECT
ZENS - 4624 SPRATT

PROJECT NO: 135856
DRAWN BY: D.D.S.G.
PROJECT MGR: R.M.
CHECKED BY: A.Z.
APPROVED BY: R.M.D.Y.

SHEET TITLE
EROSION AND SEDIMENT CONTROL PLAN

SHEET NUMBER
C-900
ISSUE
1

CITY FILE No. D07-12-00001
Scale: 1:500
Plot: W:\Projects\2021\Zens-4624_Spratt\17_0_Production\7_03_Design\04_Civil\Sheet\C-900 Erosion and Sediment Control Plan.dwg Last Saved: December 15, 2021, by: dmore