

IBI GROUP
 400 – 333 Preston Street
 Ottawa ON K1S 5N4 Canada
 tel 613 225 1311 fax 613 225 9868
 ibigroup.com



Sheet List Table	
Sheet Number	Sheet Title
--	000 COVER
C-001	GENERAL PLAN OF SERVICES
C-010	GENERAL NOTES, LEGEND AND CB DATA TABLE
C-200	GRADING PLAN
C-400	SANITARY DRAINAGE AREA PLAN
C-500	STORM DRAINAGE AREA PLAN
C-600	PONDING PLAN
C-900	EROSION AND SEDIMENT CONTROL PLAN

**CLARIDGE HOMES
 ZENS - 4624 SPRATT
 CITY OF OTTAWA
 CONTRACT NO. 135856**

REVISIONS PER CITY COMMENTS 2022-08-15
 FILE LOCATION: J:\135856_4624_Spratt\17.0_Production\7.03_Design\04_Civil\Sheets\COVER.dwg
 LAST SAVED: August 11, 2022, BY: stefan.gieseler
 PLOTTED: Monday, August 15, 2022 11:40:02 AM by Stefan Gieseler
 CITY PLAN NO. 18727

GENERAL LEGEND

Table listing symbols for construction limits, phasing lines, barrier curbs, and sidewalks.

GRADING LEGEND

Table listing symbols for proposed ditches, slope flow directions, spot grades, and retaining walls.

SERVICING LEGEND

Table listing symbols for various sewer and manhole types, including sanitary manholes, storm manholes, and watermain structures.

NOTES :

- 1. ALL MATERIALS AND CONSTRUCTION IS TO BE IN ACCORDANCE WITH THE CURRENT CITY OF OTTAWA STANDARD DRAWINGS & SPECIFICATIONS OR OPS/ODSPS IF CITY DRAWINGS AND SPECIFICATIONS DO NOT APPLY.

Three tables showing pipe interference data with columns for Crossing No., PIPE 1, PIPE 2, and Clearance.

CATCHBASIN/CATCHBASIN MANHOLE/DITCH INLET DATA

Main data table with columns for Structure ID, Storm Area ID, Structure, Frame & Cover, Elevation, Outlet Pipe, Inlet Control Device, and Comments.

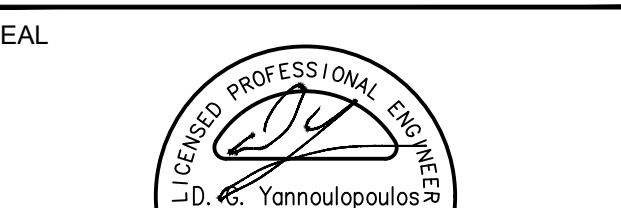
Client information: CLARIDGE HOMES, 210 Gladstone Ave., Ottawa, On K0P 0Y6.

Copyright notice: This drawing has been prepared solely for the intended use...

Issues table with columns for No., Description, and Date.



CONSULTANTS



ROADWAY STRUCTURE:

- MAIN DRIVE AISLE/FIRE ROUTE (.690mm)
40mm - SUPERPAVE 12.5 ASPHALTIC CONCRETE
50mm - SUPERPAVE 19.0 ASPHALTIC CONCRETE
150mm - OPSS GRANULAR "A" CRUSHED STONE
450mm - OPSS GRANULAR "B" TYPE II

IBI Group logo and contact information.

PROJECT: ZENS - 4624 SPRATT

Project details table with fields for Project No., Drawn By, Project Mgr., and Checked By.

GENERAL NOTES, LEGEND AND CB DATA TABLE

SHEET NUMBER: C-010, ISSUE: 1

CITY PLAN No. 18727, CITY FILE No. D07-12-22-0021



CLIENT
CLARIDGE HOMES
 210 Gladstone Ave. Ottawa, On K0P 0Y6

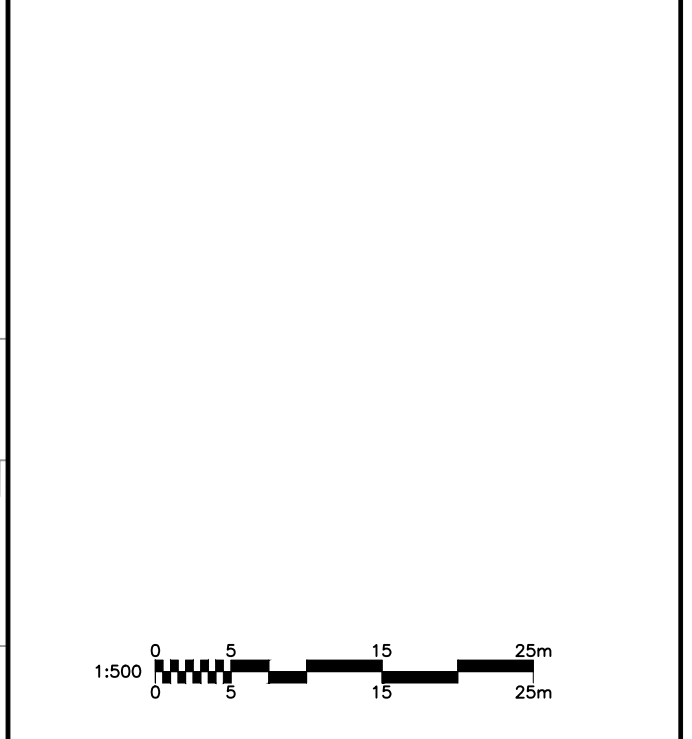
COPYRIGHT
 This drawing has been prepared solely for the intended use. Any reproduction or distribution for any purpose other than authorized by IBI Group is forbidden. When dimensions shall have precedence over scaled dimensions. Contractors shall verify and be responsible for all dimensions and conditions on the job, and IBI Group shall be informed of any variations from the dimensions and conditions shown on the drawing. Shop drawings shall be submitted to IBI Group for general confirmation before proceeding with fabrication.
 IBI Group Professional Services (Canada) Inc.
 is a member of the IBI Group of companies.

ISSUES		
No.	DESCRIPTION	DATE
1	ISSUED FOR CITY REVIEW	2021-12-16
2	REVISED PER CITY COMMENTS	2022-08-15

NOT FOR CONSTRUCTION
 FOR NOTES, LEGEND, CB TABLE, STREET SECTIONS AND DETAILS



CONSULTANTS



SEAL

LICENCED PROFESSIONAL ENGINEER
 J.D. K. Yarnopoulos
 2022-08-15
 PROVINCE OF ONTARIO

LICENCED PROFESSIONAL ENGINEER
 W. ZHUANG
 100231427
 2022-08-15
 PROVINCE OF ONTARIO

IBI GROUP
 Suite 400 - 333 Preston Street
 Ottawa ON K1S 5N4 Canada
 Tel: 613 225 1311 / 613 241 3300 Fax: 613 225 9868
 ibigroup.com

PROJECT
ZENS - 4624 SPRATT

PROJECT NO:
 135856

DRAWN BY:
 D.D./S.G.

PROJECT MGR:
 R.M.

CHECKED BY:
 A.Z.

APPROVED BY:
 R.M./D.Y.

SHEET TITLE
GRADING PLAN

SHEET NUMBER
C-200

ISSUE
1

File Location: \\113856_4624_Spratt\7_0_Production\7_03_Design\04_Civil\Sheet\C-200 GRADING PLAN.dwg
 Last Saved: August 11, 2022, by stefan.gaiser
 Plotted: Monday, August 15, 2022 11:41:04 AM by Stefan Gaiser
 SCALE CHECK
 CITY FILE No. D07-12-22-0021
 CITY PLAN No. 18729



CLIENT
CLARIDGE HOMES
 210 Gladstone Ave. Ottawa, On K0P 0Y6

COPYRIGHT
 This drawing has been prepared solely for the intended use, thus any reproduction or distribution for any purpose other than authorized by IBI Group is forbidden. When dimensions shall have precedence over scaled dimensions, Contractors shall verify and be responsible for all dimensions and conditions on the job, and IBI Group shall be relieved of any liabilities from the dimensions and conditions shown on the drawing. Shop drawings shall be submitted to IBI Group for general conformance before proceeding with fabrication.

IBI Group Professional Services (Canada) Inc.
 is a member of the IBI Group of companies.

ISSUES

No.	DESCRIPTION	DATE
1	ISSUED FOR CITY REVIEW	2021-12-16
2	REVISED PER CITY COMMENTS	2022-08-15

NOT FOR CONSTRUCTION

FOR NOTES, LEGEND, CB TABLE, STREET SECTIONS AND DETAILS

CONSULTANTS

SEAL

LEGEND

	AREA IDENTIFICATION
	POPULATION
	AREA IN HECTARES

IBI GROUP
 Suite 400 - 333 Preston Street
 Ottawa ON K1S 5N4 Canada
 Tel: 613 225 1311 / 613 241 3300 Fax: 613 225 9868
 ibigroup.com

PROJECT
ZENS - 4624 SPRATT

PROJECT NO: 135856
DRAWN BY: D.D./S.G.
PROJECT MGR: R.M.

CHECKED BY: A.Z.
APPROVED BY: R.M./D.Y.

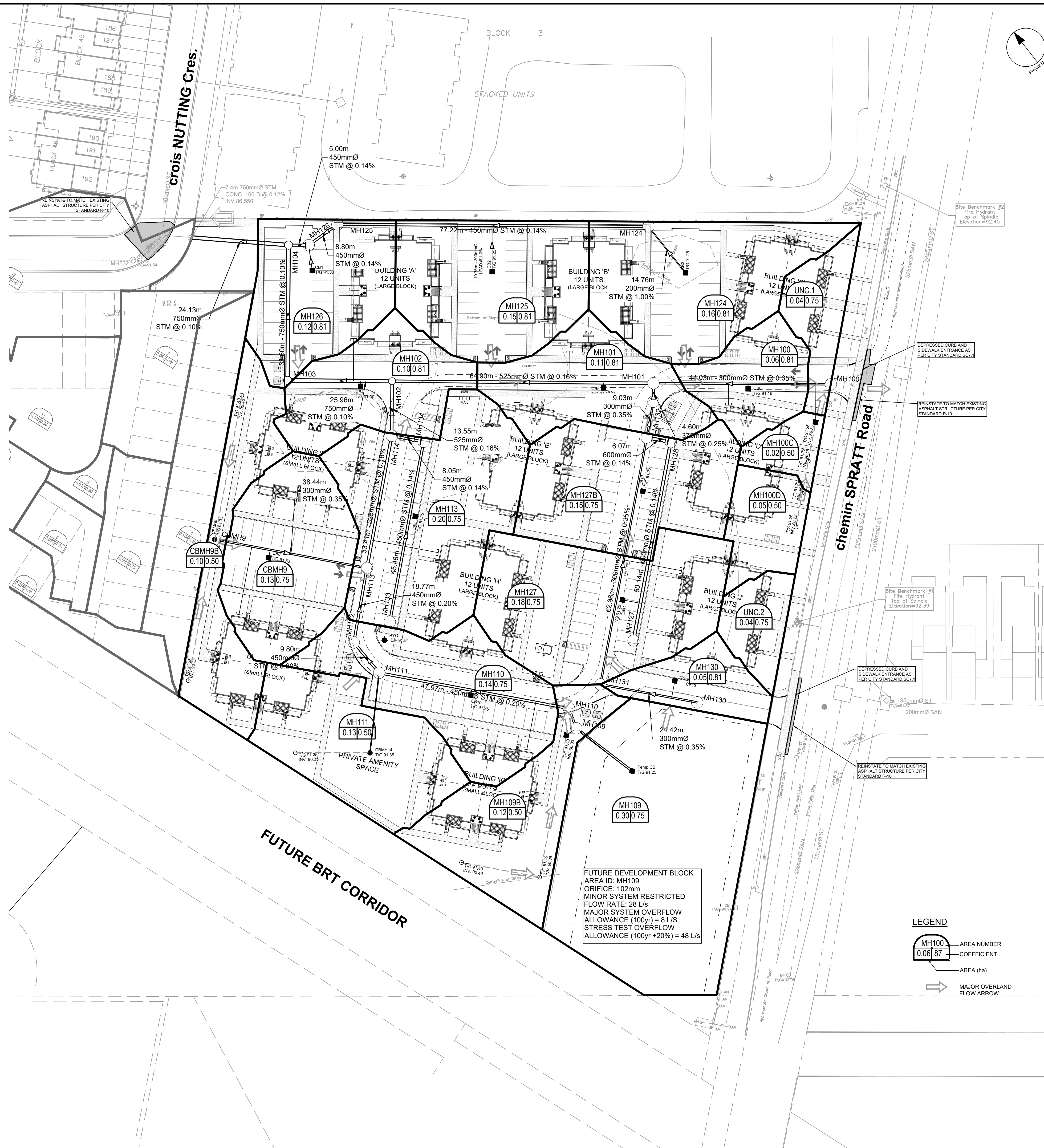
SHEET TITLE
SANITARY DRAINAGE AREA PLAN

SHEET NUMBER C-400 **ISSUE** 1

CITY PLAN No. 18729

CITY FILE No. D07-12-22-0021

File Location: J:\135856_4624_Spratt\7_0_Production\7_03_Design\04_Civil\Sheets\C-00 SANITARY DRAINAGE AREA PLAN.dwg Last Saved: August 11, 2022 9:14:23 PM by Amy Zhuang
 Plotter: Monday, August 15, 2022 9:14:23 PM by Amy Zhuang
 SCALE CHECK



CLIENT

COPYRIGHT
This drawing has been prepared solely for the intended use. Any reproduction or distribution for any purpose other than authorized by IBI Group is forbidden. Written dimensions shall have precedence over scaled dimensions. Contractors shall verify and be responsible for all dimensions and conditions on the job, and IBI Group shall be relieved of any liability from the dimensions and conditions shown on the drawing. Shop drawings shall be submitted to IBI Group for general conformance before proceeding with fabrication.

IBI Group Professional Services (Canada) Inc.
is a member of the IBI Group of companies.

ISSUES

No.	DESCRIPTION	DATE
1	ISSUED FOR CITY REVIEW	2021-12-15
2	REVISED PER CITY COMMENTS	2022-08-15

SECTION FOR NOTES, LEGEND, CB TABLE, STREET SECTIONS AND DETAILS

CONSULTANTS

SEAL

IBI GROUP
Suite 400 - 333 Preston Street
Ottawa ON K1S 5N4 Canada
Tel: 613 225 1311 / 613 241 3300 Fax: 613 225 9868
ibigroup.com

PROJECT
ZENS - 4624 SPRATT

PROJECT NO: 135856
DRAWN BY: D.D./S.G.
PROJECT MGR: R.M.

CHECKED BY: A.Z.
APPROVED BY: R.M./D.Y.

SHEET TITLE
STORM DRAINAGE AREA PLAN

SHEET NUMBER C-500 **ISSUE** 1

CITY PLAN No. 18727

CITY FILE No. D07-12-22-0021

File Location: J:\135856_4624_Spratt\17_0_Production\7_03_Design\04_Civil\Sheet\C-500 STORM DRAINAGE AREA PLAN.dwg Last Saved: December 15, 2021, by ddre Printed: Monday, August 15, 2022 11:41:44 AM by Stefan Gassner



CLIENT
CLARIDGE HOMES
 210 Gladstone Ave. Ottawa, On K0P 0Y6

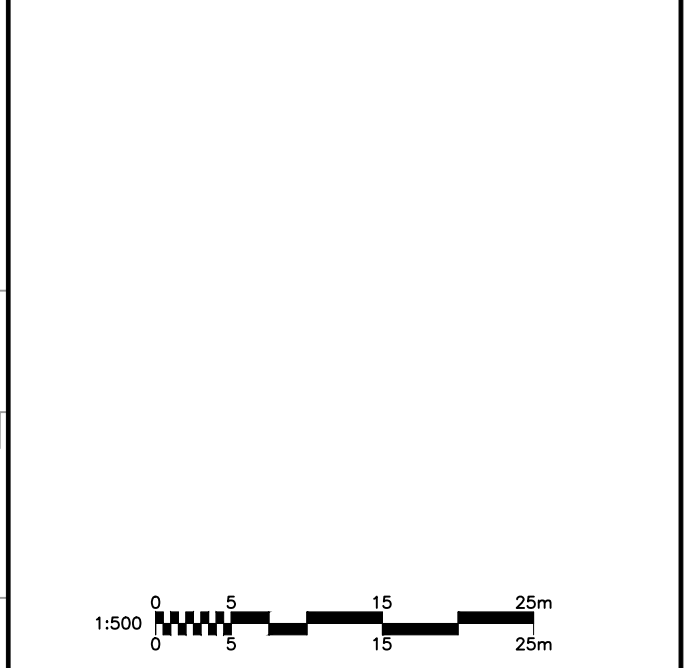
COPYRIGHT
 This drawing has been prepared solely for the intended use. Any reproduction or distribution for any purpose other than authorized by IBI Group is forbidden. Written dimensions shall have precedence over scaled dimensions. Contractors shall verify and be responsible for all dimensions and conditions on the job, and IBI Group shall be informed of any variations from the dimensions and conditions shown on the drawing. Shop drawings shall be submitted to IBI Group for general confirmation before proceeding with fabrication.
 IBI Group Professional Services (Canada) Inc.
 is a member of the IBI Group of companies.

ISSUES		
No.	DESCRIPTION	DATE
1	ISSUED FOR CITY REVIEW	2021-12-15
2	REVISED PER CITY COMMENTS	2022-08-15

NOT FOR CONSTRUCTION
 NOT FOR NOTES, LEGEND, CB TABLE, STREET ACTIONS AND DETAILS



CONSULTANTS



SEAL

PROFESSIONAL ENGINEER
 J.D. K. Yarnopoulos
 2022-08-15
 PROVINCE OF ONTARIO

PROFESSIONAL ENGINEER
 W. ZHUANG
 100231427
 2022-08-15
 PROVINCE OF ONTARIO

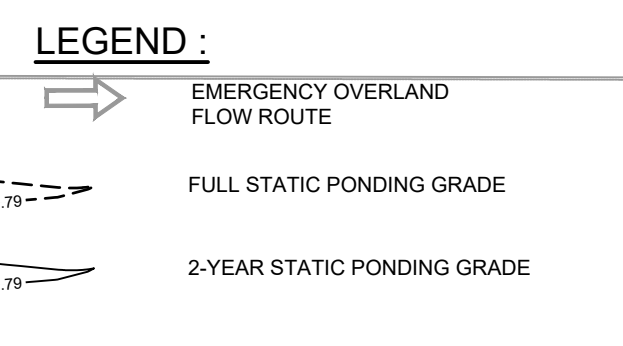
IBI GROUP
 Suite 400 - 333 Preston Street
 Ottawa ON K1S 5N4 Canada
 Tel: 613 225 1311 / 613 241 3300 Fax: 613 225 9868
 ibigroup.com

PROJECT
ZENS - 4624 SPRATT

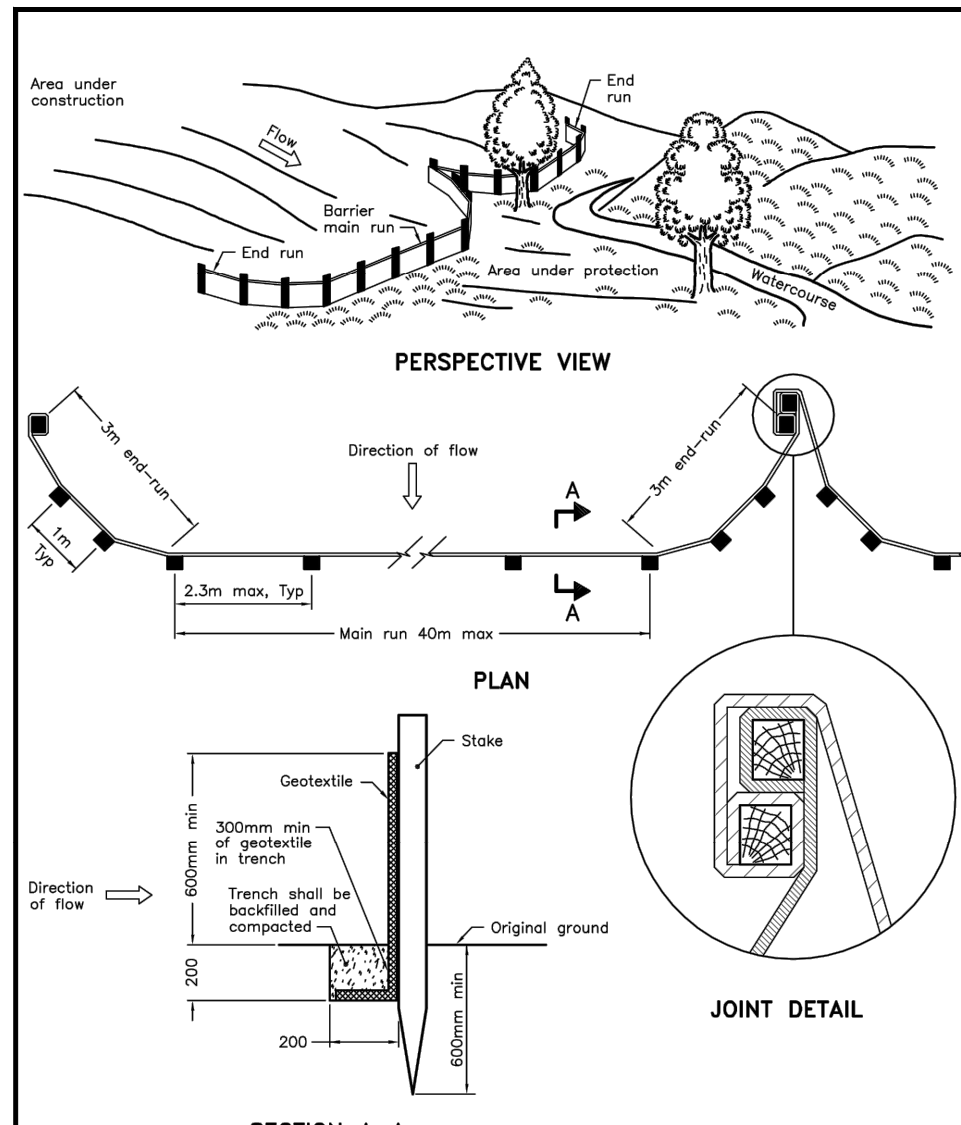
PROJECT NO: 135856	CHECKED BY: A.Z.
DRAWN BY: D.D./S.G.	APPROVED BY: R.M./D.Y.
PROJECT MGR: R.M.	

SHEET TITLE
PONDING PLAN

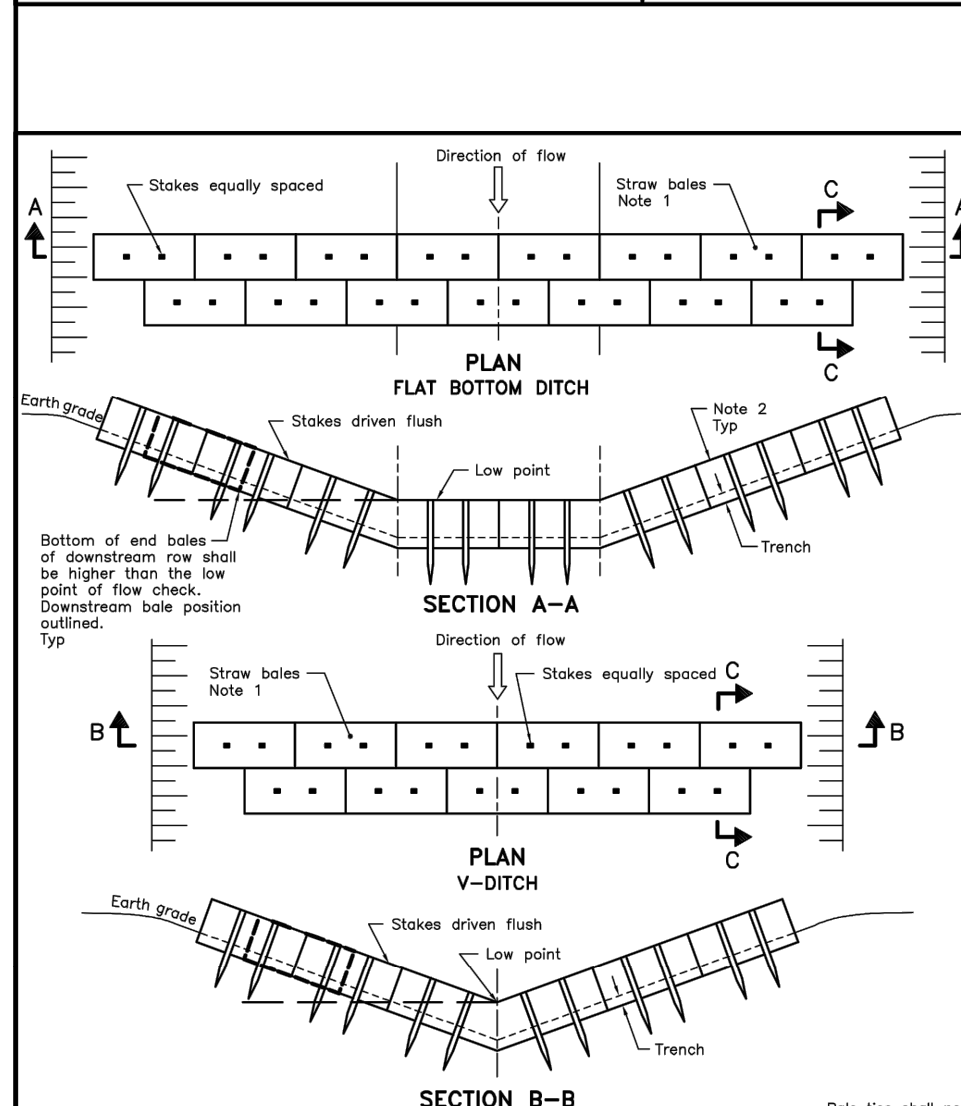
SHEET NUMBER C-600	ISSUE 1
------------------------------	-------------------



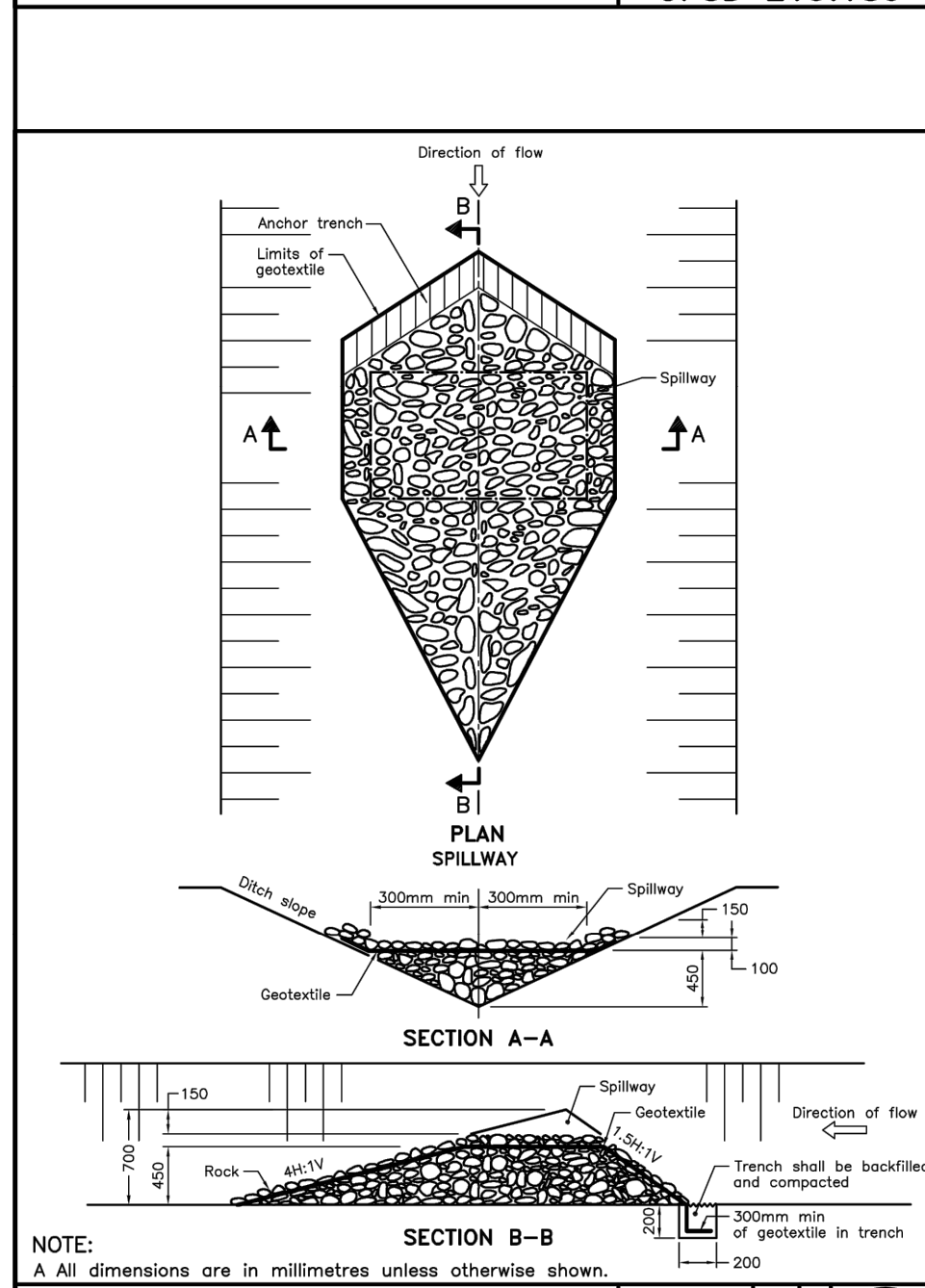
File Location: \\1138566_4624_Spratt\7_0_Production\7_03_Design\04_Civil\Sheets\C-600_PONDING PLAN.dwg
 Last Saved: August 11, 2022, by: salem.gasser
 Plotted: Monday, August 15, 2022 11:42:09 AM by: Stefan Grasser
 SCALE CHECK: CITY FILE No. D07-12-22-0021
 CITY PLAN No. 18727



SECTION A-A
 LIGHT-DUTY SILT FENCE BARRIER
 OPSD 219.110



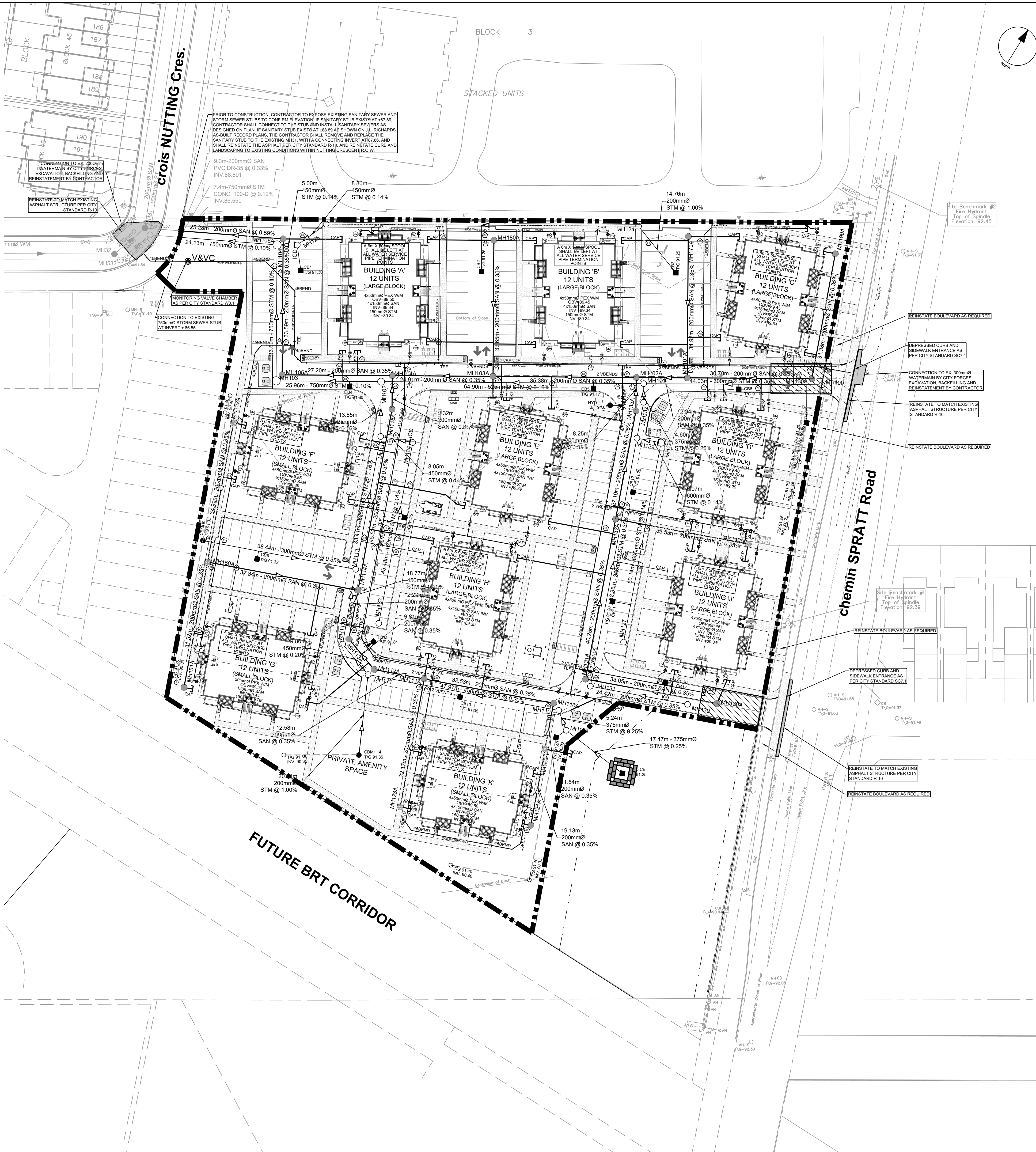
SECTION A-A
SECTION B-B
 STRAW BALE FLOW CHECK DAM
 OPSD 219.180



SECTION A-A
SECTION B-B
 TEMPORARY ROCK FLOW CHECK DAM
 OPSD 219.210

- NOTES:**
1. THE CONTRACTOR SHALL IMPLEMENT BEST MANAGEMENT PRACTICES, TO PROVIDE FOR PROTECTION OF THE AREA DRAINAGE SYSTEM AND THE RECEIVING WATERCOURSE, DURING CONSTRUCTION ACTIVITIES. THE CONTRACTOR ACKNOWLEDGES THAT FAILURE TO IMPLEMENT APPROPRIATE EROSION AND SEDIMENT CONTROL MEASURES MAY BE SUBJECT TO PENALTIES IMPOSED BY ANY APPLICABLE REGULATORY AGENCY.
 2. SILT FENCE TO BE ERRECTED PRIOR TO EARTH WORKS BEING COMMENCED. SILT FENCE TO BE MAINTAINED UNTIL VEGETATION IS ESTABLISHED OR UNTIL START OF SUBSEQUENT PHASE.
 3. SILT SACK TO BE PLACED AND MAINTAINED UNDER COVER OF ALL CATCHBASINS. GEOTEXTILE SILT SACK IN STREET C&S TO REMAIN UNTIL ALL CURBS ARE CONSTRUCTED. GEOTEXTILE FABRIC IN RYCB&S TO REMAIN UNTIL VEGETATION IS ESTABLISHED. ALL CATCHBASINS TO BE REGULARLY INSPECTED AND CLEANED, AS NECESSARY, UNTIL SOD AND CURBS ARE CONSTRUCTED.
 4. WORKS NOTED ABOVE ARE TO BE INSTALLED, INSPECTED, MAINTAINED AND ULTIMATELY REMOVED BY SERVICING CONTRACTOR.
 5. THIS IS A "LIVING DOCUMENT" AND MAY BE MODIFIED IN THE EVENT THE PROPOSED CONTROL MEASURES ARE INSUFFICIENT.
 6. SEE DRAWING C-010 FOR ADDITIONAL DETAILS AND NOTES.

- LEGEND:**
- LIGHT DUTY SILT FENCE AS PER OPSD-219.110
 - SNOW FENCE
 - STRAW BALE CHECK DAM AS PER OPSD-219.180
 - ROCK CHECK DAM AS PER OPSD-219.210
 - SILT SACK PLACED UNDER EXISTING CB COVER
 - TEMPORARY MUD MAT 0.15m THICK 50mm CLEAR STONE ON NON WOVEN FILTER CLOTH



CLIENT
CLARIDGE HOMES
 210 Gladstone Ave. Ottawa, ON K0P 0Y6

COPYRIGHT
 This drawing has been prepared solely for the intended use. Any reproduction or distribution for any purpose other than authorized by IBI Group is forbidden. When dimensions shall have precedence over scaled dimensions. Contractors shall verify and be responsible for all dimensions and conditions on the job, and IBI Group shall be informed of any variations from the dimensions and conditions shown on the drawing. Shop drawings shall be submitted to IBI Group for general conformance before proceeding with fabrication.

IBI Group Professional Services (Canada) Inc.
 is a member of the IBI Group of companies.

ISSUES	No.	DESCRIPTION	DATE
	1	ISSUED FOR CITY REVIEW	2021-12-15
	2	REVISED PER CITY COMMENTS	2022-08-15

SCALE CHECK
 1:500

CONSULTANTS
 IBI GROUP

SEAL
 LICENSED PROFESSIONAL ENGINEER
 J.D. K. Yarnopoulos
 2022-08-15
 PROVINCE OF ONTARIO

SEAL
 LICENSED PROFESSIONAL ENGINEER
 W. ZHUANG
 100231427
 2022-08-15
 PROVINCE OF ONTARIO

PROJECT
ZENS - 4624 SPRATT

PROJECT NO: 135856
DRAWN BY: D.D.S.G.
PROJECT MGR: R.M.
SHEET TITLE: EROSION AND SEDIMENT CONTROL PLAN
SHEET NUMBER: C-900

CHECKED BY: A.Z.
APPROVED BY: R.M./D.Y.
ISSUE: 1

CITY PLAN No. 18727

File Location: \\113856_4624_Spratt\7_0_Production\7_03_Design\04_Civil\Sheets\C-000 EROSION AND SEDIMENT CONTROL PLAN.dwg Last Saved: December 15, 2021 11:42:39 AM by Stefan Gieseler
 C:\Users\stefan.gieseler\AppData\Local\Temp\113856_4624_Spratt\7_0_Production\7_03_Design\04_Civil\Sheets\C-000 EROSION AND SEDIMENT CONTROL PLAN.dwg