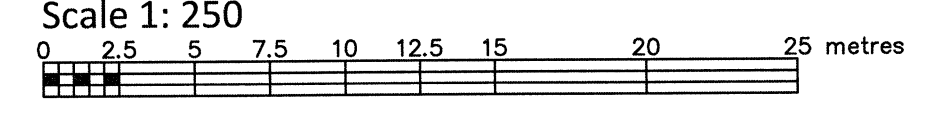


PART OF LOT 20 CONCESSION 1 (OTTAWA FRONT) GEOGRAPHIC TOWNSHIP OF GLOUCESTER CITY OF OTTAWA

FARLEY, SMITH & DENIS SURVEYING LTD. 2021



Metric Note Distances shown on this plan are in metres and can be converted to feet by dividing by 0.3048.

Distance Note Distances shown on this plan are ground distances and can be converted to grid distances by multiplying by the combined scale factor of 0.99995.

Bearing Note Bearings are grid, are referred to the northerly limit of Montreal Road having a bearing of N 83° 55' 50" W as shown on Plan SR-2278 and are referred to the Central Meridian of MTM Zone 9 (76°30' West Longitude) Nad-83 (Original).

For bearing comparisons, a rotation of 0°35'50" counter-clockwise was applied to bearings on P3.

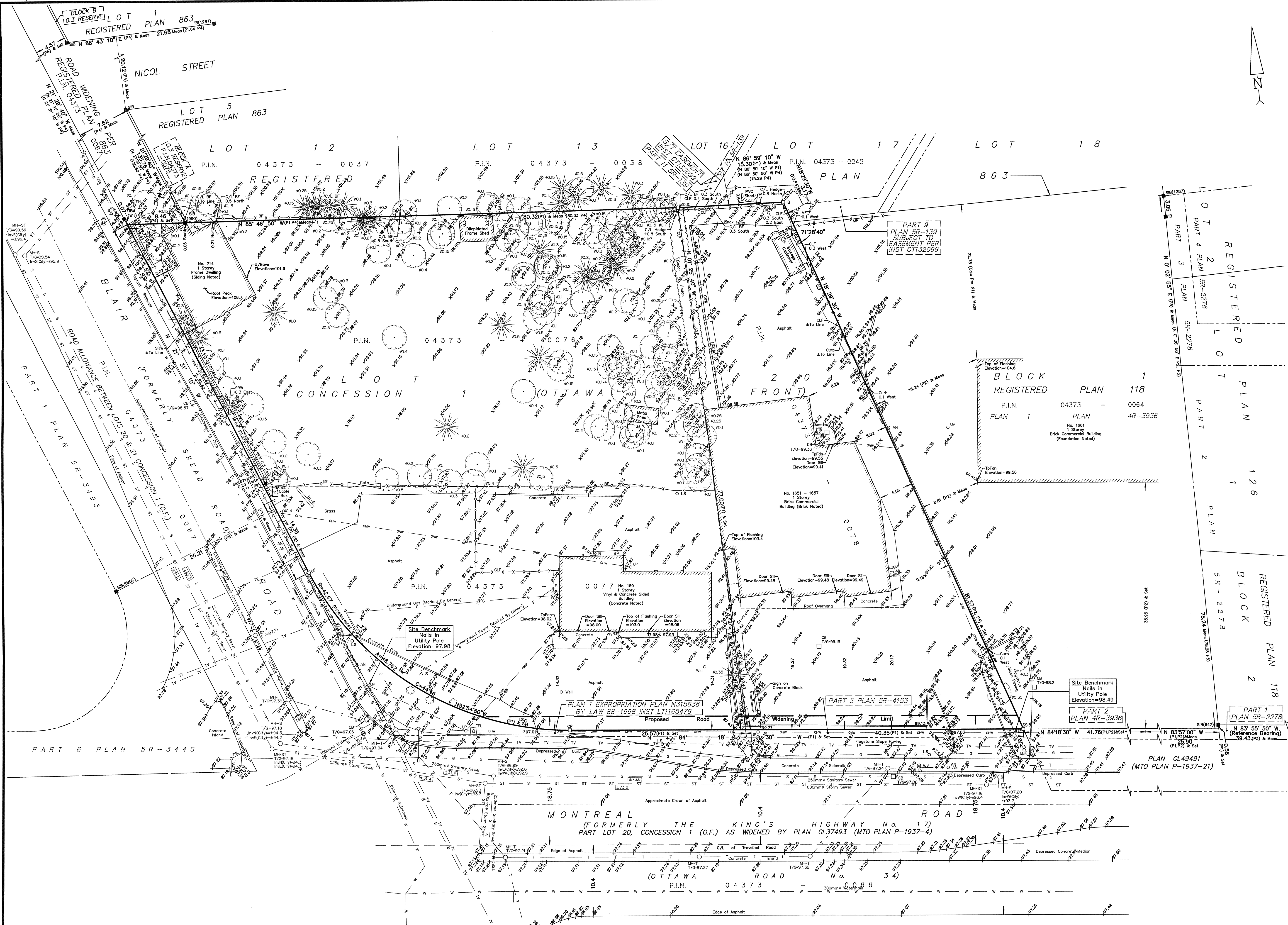
For bearing comparisons, a rotation of 0°36'20" counter-clockwise was applied to bearings on P4.

Elevation Notes 1. Elevations shown are geodetic and are referred to Geodetic Datum CGVD-1928 -1978. (See FSD File No. 687-20)

2. It is the responsibility of the user of this information to verify that the job benchmark has not been altered or disturbed and that its relative elevation and description agrees with the information shown on this drawing.

Utility Notes 1. This drawing cannot be accepted as acknowledging all of the utilities and it will be the responsibility of the user to contact the respective utility authorities for confirmation. 2. Only visible surface utilities were located. 3. Underground utility data derived from City of Ottawa utility sheet reference: C-24-9, C-24-25, 6387p&p, 9703p&p03, 10170p&p1, 10170p&p2 & PG08-304-A. 4. Sanitary and storm sewer gages and inverts were compiled from: City of Ottawa Utility Sheets. 5. A field location of underground plant by the pertinent utility authority is mandatory before any work involving breaking ground, probing, excavating etc.

Notes & Legend table with symbols for Denotes, Survey Monument Planted, Standard Iron Bar, Short Standard Iron Bar, Iron Bar, Round Iron Bar, Concrete Pin, Witness, Measured, Plan SR-4153, Plan by (1287) dated May 26, 1986 (Job No. 236/86), Plan SR-2278, Registered Plan 863, Plan 4R-3935, Plan SR-3440, Notes by (1287) dated August 6, 1986, Inst GL65177, Inst GL63040, Maintenance Hole (Storm), Maintenance Hole (Sanitary), Valve Chamber (Watermain), Undergound Storm Sewer, Undergound Sanitary Sewer, Undergound Water, Undergound Power, Undergound Gas, Undergound Bell, Undergound Cable, Overhead Wires, Utility Pole, Anchor, Light Standard, Catch Basin, Fire Hydrant, Water Valve, Gas Valve, Gas Meter, Bell Terminal Box, Traffic Signal Post, Bollard, Sign, Gate, Telephone Booth, Diameter, Chain Link Fence, Board Fence, Metal Fence, Concrete Retaining Wall, Stone Retaining Wall, Invert, Top of Grate, Underside of Eave, Top of Foundation, Centreline, Location of Elevations, Top of Concrete Curb/Retaining Wall Elevation, Property Line, Shrub, Deciduous Tree, Coniferous Tree.



Surveyor's Certificate I certify that: 1. This survey and plan are correct and in accordance with the Survey Act, the Surveyors Act and the Regulations made under them. 2. The survey was completed on the 8th day of April, 2021. Daniel Robinson Ontario Land Surveyor

FARLEY, SMITH & DENIS SURVEYING LTD. ASSOCIATION OF ONTARIO LAND SURVEYORS PLAN SUBMISSION FORM V-10933 THIS PLAN IS NOT VALID UNLESS IT IS AN UNPROCESSED ORIGINAL COPY ISSUED BY THE SURVEYOR In accordance with Regulation 1026, Section 29 (3).

ONTARIO LAND SURVEYORS CANADA LAND SURVEYORS 190 COLONNADE ROAD, OTTAWA, ONTARIO K2E 7J5 TEL: (613) 727-8226 FAX: (613) 727-1826

TOPOGRAPHIC DATA WAS COLLECTED UNDER WINTER CONDITIONS. SNOW COVER AND ICE PRECLUDE DETERMINING LOCATION AND ELEVATION OF SOME TOPOGRAPHICAL DATA THAT IS OTHERWISE VISIBLE.

WARNING NO PERSON MAY COPY, REPRODUCE, DISTRIBUTE OR ALTER THIS PLAN IN WHOLE OR IN PART WITHOUT THE WRITTEN PERMISSION OF FARLEY, SMITH & DENIS SURVEYING LTD. © FARLEY, SMITH & DENIS SURVEYING LTD., 2021.