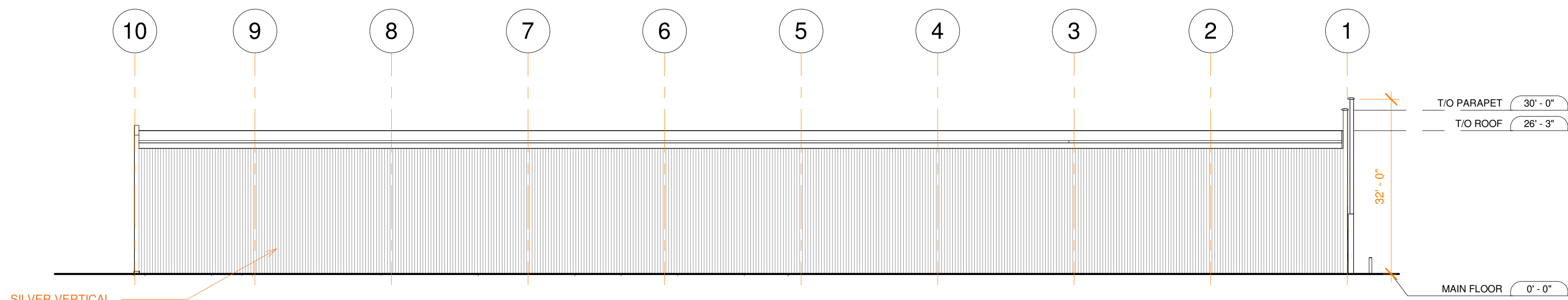
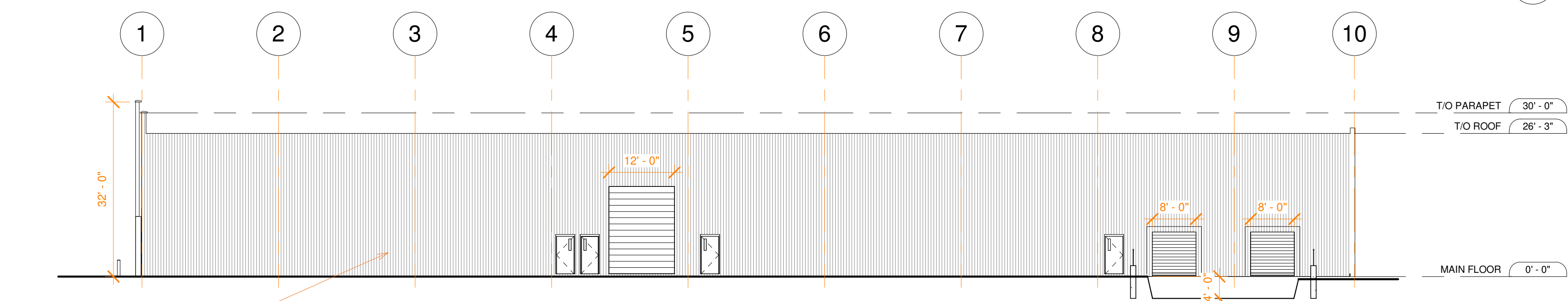


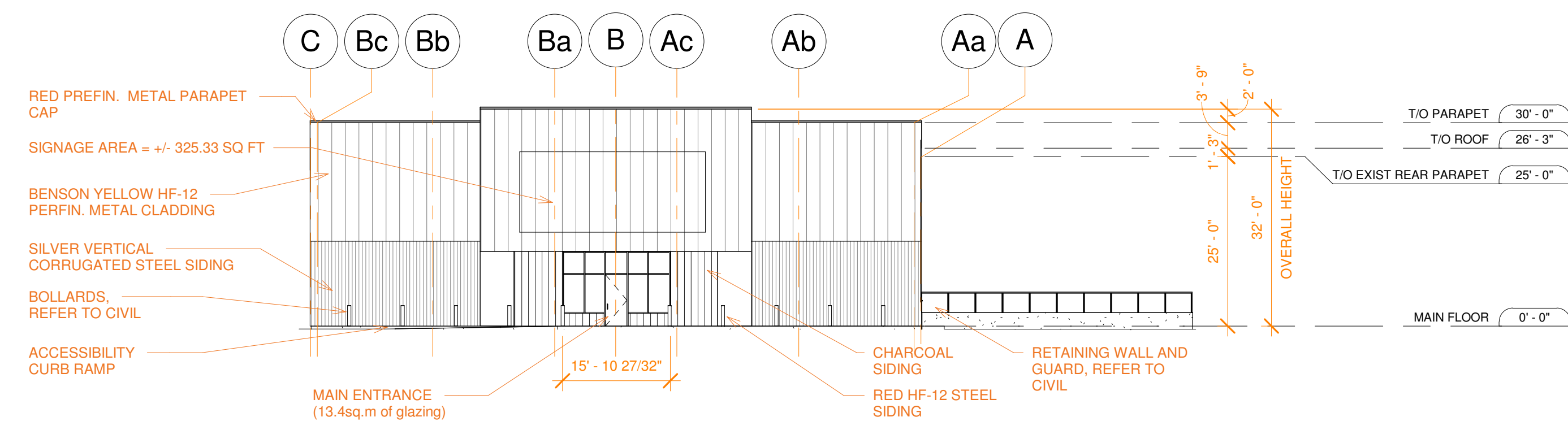
FLOOR PLAN
1/16" = 1'-0" B400



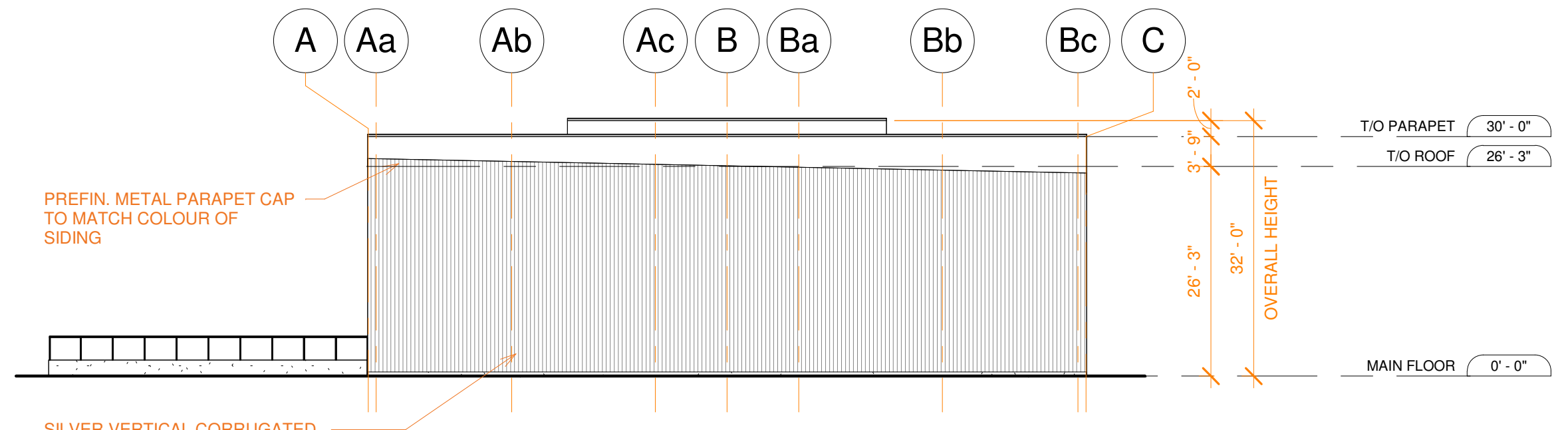
EAST ELEVATION
1/16" = 1'-0" B400



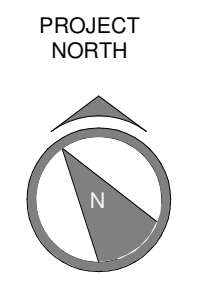
WEST ELEVATION
1/16" = 1'-0" B400



NORTH ELEVATION
1/16" = 1'-0" B400



SOUTH ELEVATION
1/16" = 1'-0" B400



BUILDING CODE/ZONING REVIEW
 • BUILDING AREA 20,000 SQ. FT (1858.06 SQ. M)
 • FACING 1 STREET
 • NON-SPRINKLERED
 • COMBUSTIBLE CONST. PERMITTED

IH - HEAVY INDUSTRIAL ZONE
 PERMITTED USE - WAREHOUSING WITH ACCESSORY DISPLAY AND SALES AREA
 AREA OF DISPLAY AREA = 2310.21 SF (14.9% OF TOTAL GROSS FLOOR AREA)

OWNER INFORMATION:
 713796 Canada Inc.
 c/o Benson Group,
 700 Education Boulevard,
 Cornwall, ON K6H 6B8
 613-933-1700

DE SAULNIERS CONSTRUCTION LTD
 DE SAULNIERS CONSTRUCTION LTD.
 1120 MARLEAU AVE. CORNWALL, ON, K6H 2W6
 T: (613) 937-2016 | F: (613) 937-3897
 DCLIMITED.CA

DISCLAIMER: THIS DRAWING / DESIGN ARE COPYRIGHT PROTECTED AND SHALL NOT BE COPIED, USED, OR REVISED WITHOUT WRITTEN PERMISSION. ALL DIMENSIONS, UTILITY LOCATIONS ARE TO BE CHECKED BY THE CONTRACTOR AND SHALL BE REPORTED AS WELL AS ALL ERRORS AND OMISSIONS PRIOR TO START OF WORK. DO NOT SCALE DRAWINGS.

IS	RE	DATE	DESCRIPTION
5	1	AUG-15-2022	RE-ISSUED FOR SITE PLAN APPROVAL
4	1	MAY-13-2022	RE-ISSUED FOR SITE PLAN APPROVAL
3	1	AUG-26-2021	ISSUED FOR SITE PLAN APPROVAL

BENSON GROUP
 2020 BANTREE ST, OTTAWA, ONTARIO

BANTREE AUTO PARTS

FLOOR PLAN AND ELEVATIONS

DRAWN BY: Author
 CHECKED BY: Checker
 PROJECT NO: C1805-005

B400

D07-12-22-0020

#18676