

LEGEND:

■	IRON BAR
○	BENCHMARK
⊕	EX FIRE HYDRANT
⊕	EX LIGHT POLE
⊕	EX LIGHT STANDARD
⊕	EX STORM MH
⊕	EX SANITARY MH
⊕	EX STORM CB
⊕	EX WATER VALVE
⊕	EX VALVE CHAMBER
⊕	EX BELL & HYDRO POLE
⊕	EX GUY WIRE AND ANCHOR
⊕	EX TRAFFIC SIGNAL
⊕	EX GAS VALVE
⊕	EX SIGN
⊕	EX TREE
---	SUBJECT PROPERTY
---	PROPERTY LINE
---	EX CONC. CURB
---	EX CENTERLINE OF DITCH
---	EX ROAD CENTERLINE
---	EX FENCE
---	EX STORM SEWER
---	EX CONTOUR
○	NEW YARD LIGHT
○	NEW STORM MH
○	NEW SANITARY MH
○	NEW STORM CB
○	NEW STORM CB/H
○	NEW ILLUMINATED BOLLARD
---	NEW CONC. CURB
---	NEW CURB CUT/DEPRESSED CURB
---	FIRE ROUTE SIGN
---	NEW 1.8m HIGH WOOD FENCE
---	DRAINAGE AREA BOUNDARY
---	CATCHMENT I.D.
---	AREA (ha) FACILITY FLOW

No.	REVISIONS	Date	By	App.
E	PER SITE CHANGES	JULY 15 2022	YS	J.S.
D	RE-ISSUED FOR SPA	MAR 28 2022	ML	J.S.
C	RE-ISSUED FOR SPA	DEC 03 2021	ML	J.S.
B	RE-ISSUED FOR SPA	SEPT 24 2021	ML	J.S.
A	ISSUED FOR SPA	AUG 25 2021	ML	J.S.



exp Services Inc.
 1-1-905-793-9800 | 1-1-905-793-0641
 1595 Clark Boulevard
 Brampton, ON L6T 4V1
 Canada
 www.exp.com

exp.

• BUILDINGS • EARTH & ENVIRONMENT • ENERGY •
 • INDUSTRIAL • INFRASTRUCTURE • SUSTAINABILITY •

Owner/Clien:

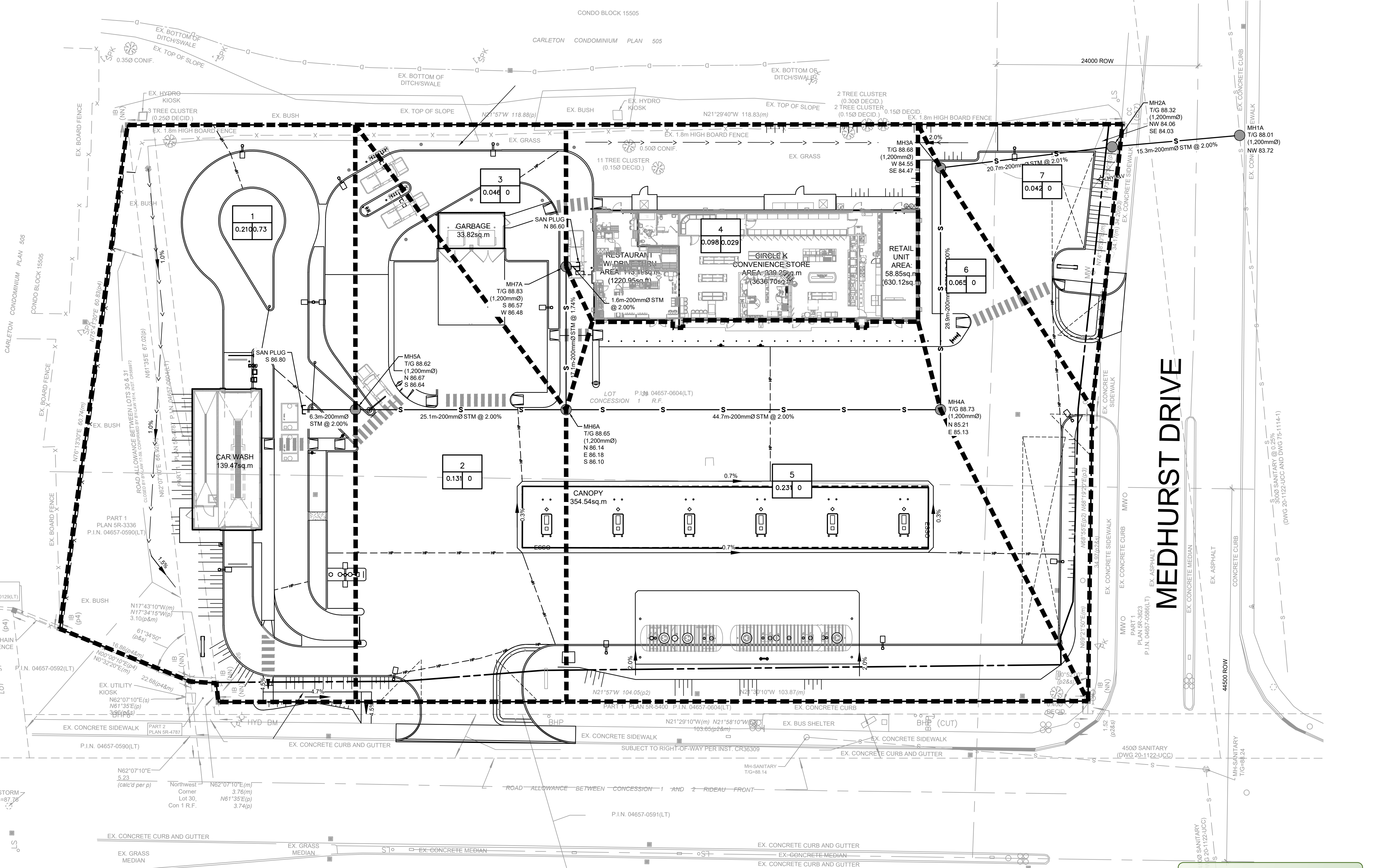
CIRCLE K

Location:
 1545 WOODROFFE AVE.
 OTTAWA, ON

Title:
 POST-DEVELOPMENT
 SANITARY DRAINAGE
 AREA PLAN

Designed By: M.L.	Drawn By: M.L.	Checked By: J.S.
Scale: 1:250	Date: APRIL 2020	City Drawing No.:
Project No.: BRM00606364-B0	Drawing No.:	C07

CITY DWG. # 17094



APPROVED
 By Allison Hamlin at 12:12 pm, Aug 19, 2022

Allison Hamlin

ALLISON HAMLIN
 MANAGER (A), DEVELOPMENT REVIEW WEST
 PLANNING, REAL ESTATE & ECONOMIC DEVELOPMENT
 DEPARTMENT, CITY OF OTTAWA

WOODROFFE AVENUE

MEDHURST DRIVE

