

Stantec Consulting Ltd.
400 - 1331 Clyde Avenue
Ottawa ON
Tel. 613.722.4420
www.stantec.com

Copyright Reserved

The Contractor shall verify and be responsible for all dimensions. DO NOT scale the drawing - any errors or omissions shall be reported to Stantec without delay.
The Copyrights to all designs and drawings are the property of Stantec. Reproduction or use for any purpose other than that authorized by Stantec is forbidden.

Legend

- PROPOSED SILT FENCE BOUNDARY AS PER OPSD 219.110
PROPOSED CATCH BASIN PROTECTION AS PER FLEX STORM INLET FILTERS DETAIL. ITEM CODE P-RD-240-223-FX
PROPOSED CATCH BASIN MH PROTECTION AS PER FLEX STORM INLET FILTERS DETAIL. ITEM CODE P-RD-290-270-FX
PROPOSED CATCH BASIN PROTECTION AS PER TERRAFIX SILTSACK DETAIL
PROPOSED MUD MAT LOCATION
PROPOSED VALVE BOX
PROPOSED VALVE CHAMBER
PROPOSED FIRE HYDRANT
PROPOSED SANITARY SEWER MANHOLE
PROPOSED STORM SEWER MANHOLE
PROPOSED CATCH BASIN

Best Management Practices

- CONTRACTOR TO PROVIDE EROSION AND SEDIMENT CONTROLS (BEST MANAGEMENT PRACTICES) DURING CONSTRUCTION OF THIS PROJECT.
EROSION MUST BE MINIMIZED AND SEDIMENTS MUST BE REMOVED FROM CONSTRUCTION SITE RUN-OFF IN ORDER TO PROTECT DOWNSTREAM AREAS. DURING ALL CONSTRUCTION, EROSION AND SEDIMENTATION SHOULD BE CONTROLLED BY THE FOLLOWING TECHNIQUES:
1. LIMIT THE EXTENT OF EXPOSED SOILS AT ANY GIVEN TIME.
2. REVEGETATE EXPOSED AREAS AND SLOPES AS SOON AS POSSIBLE.
3. MINIMIZE AREA TO BE CLEARED AND GRUBBED.
4. PROTECT EXPOSED SLOPES WITH PLASTIC OR SYNTHETIC MULCHES.
5. INSTALL CATCH BASIN INSERTS OR EQUIVALENT IN ALL PROPOSED CATCH BASINS AND CATCH BASIN MANHOLES AND IN ALL EXISTING CATCH BASINS THAT WILL RECEIVE RUN-OFF FROM THE SITE.
6. A SILT FENCE SHALL BE INSTALLED AROUND THE PERIMETER OF ALL AND ANY STOCKPILES OF MATERIAL TO BE USED OR REMOVED FROM SITE. (LOCATION TO BE DETERMINED BY THE CONTRACTOR)
7. A VISUAL INSPECTION SHALL BE DONE ONLY ON SEDIMENT CONTROL MEASURES AND CLEANED OF ANY ACCUMULATED DEBRIS AS REQUIRED. THE DEPOSITS WILL BE DISPOSED OFF SITE AS PER THE REQUIREMENTS OF THE CONTRACT.
8. SEDIMENT CONTROL BARRIERS MAY ONLY BE REMOVED TEMPORARILY WITH APPROVAL OF CONTRACT ADMINISTRATOR TO ACCOMMODATE CONSTRUCTION OPERATIONS. ALL AFFECTED BARRIERS MUST BE REINTEGRATED AT NIGHT WHEN CONSTRUCTION IS COMPLETED. NO REMOVAL WILL OCCUR IF THERE IS A SIGNIFICANT RAINFALL EVENT (ANTICIPATED >10mm) UNLESS A NEW DEVICE HAS BEEN INSTALLED TO PROTECT EXISTING STORM AND SANITARY SEWER SYSTEMS, OR DOWNSTREAM WATERCOURSES.
9. NO REFUELING OR CLEANING OF EQUIPMENT IS PERMITTED NEAR ANY EXISTING WATERWAY.
10. CONTRACTOR SHALL REMOVE SEDIMENT CONTROL MEASURES WHEN, IN THE OPINION OF THE CONTRACT ADMINISTRATOR, THE MEASURES IS NO LONGER REQUIRED. NO CONTROL MEASURES SHALL BE PERMANENTLY REMOVED WITHOUT PRIOR WRITTEN AUTHORIZATION FROM THE CONTRACT ADMINISTRATOR.
11. THE CONTRACTOR SHALL PERIODICALLY, OR WHEN REQUESTED BY THE CONTRACT ADMINISTRATOR, CLEAN OUT ACCUMULATED SEDIMENTS AS REQUIRED.
12. THE CONTRACTOR SHALL IMMEDIATELY REPORT TO THE ENGINEER ANY ACCIDENTAL DISCHARGES OF SEDIMENT MATERIAL INTO THE WATERCOURSE. APPROPRIATE RESPONSE MEASURES, INCLUDING ANY REPAIRS TO EXISTING CONTROL MEASURES OR THE IMPLEMENTATION OF ADDITIONAL CONTROL MEASURES, SHALL BE CARRIED OUT BY THE CONTRACTOR WITHOUT DELAY.
13. CONTRACTOR SHALL INSTALL MUD MATS AT BOTH ENTRANCES TO THE SITE.
14. STORMWATER SWALES TO BE COVERED WITH HYDRO-SEED AND MULCH.

Table with 3 columns: Revision, Date, Description. Includes entries for Revised for City Comments, Geotech Review, SPA, and App'd.

Table with 3 columns: File Name, Date, Version. Includes entries for File Name: 16401727 DB.dwg, Date: 22.08.03, Version: 2, 1, 0.

Table with 3 columns: Permit Seal, Date, Version. Includes entries for File Name: 16401727 DB.dwg, Date: 22.02.14, Version: Dwn, Chkd, Dgn.

Client/Project

BAYVIEW STITTSVILLE INC.

THE LANDING ON MAIN
1364-1370 STITTSVILLE MAIN STREET
STITTSVILLE, ON, CANADA

Title
EROSION CONTROL PLAN AND DETAIL SHEET

Table with 3 columns: Project No., Scale, Revision. Includes entries for Project No.: 16401727, Scale: Sheet, Revision: 2.

ECDS-1 5 of 8 2 PLAN # 1744

FLEXSTORM P/Ns 62LHDFRFX & 62LHDFRFXP

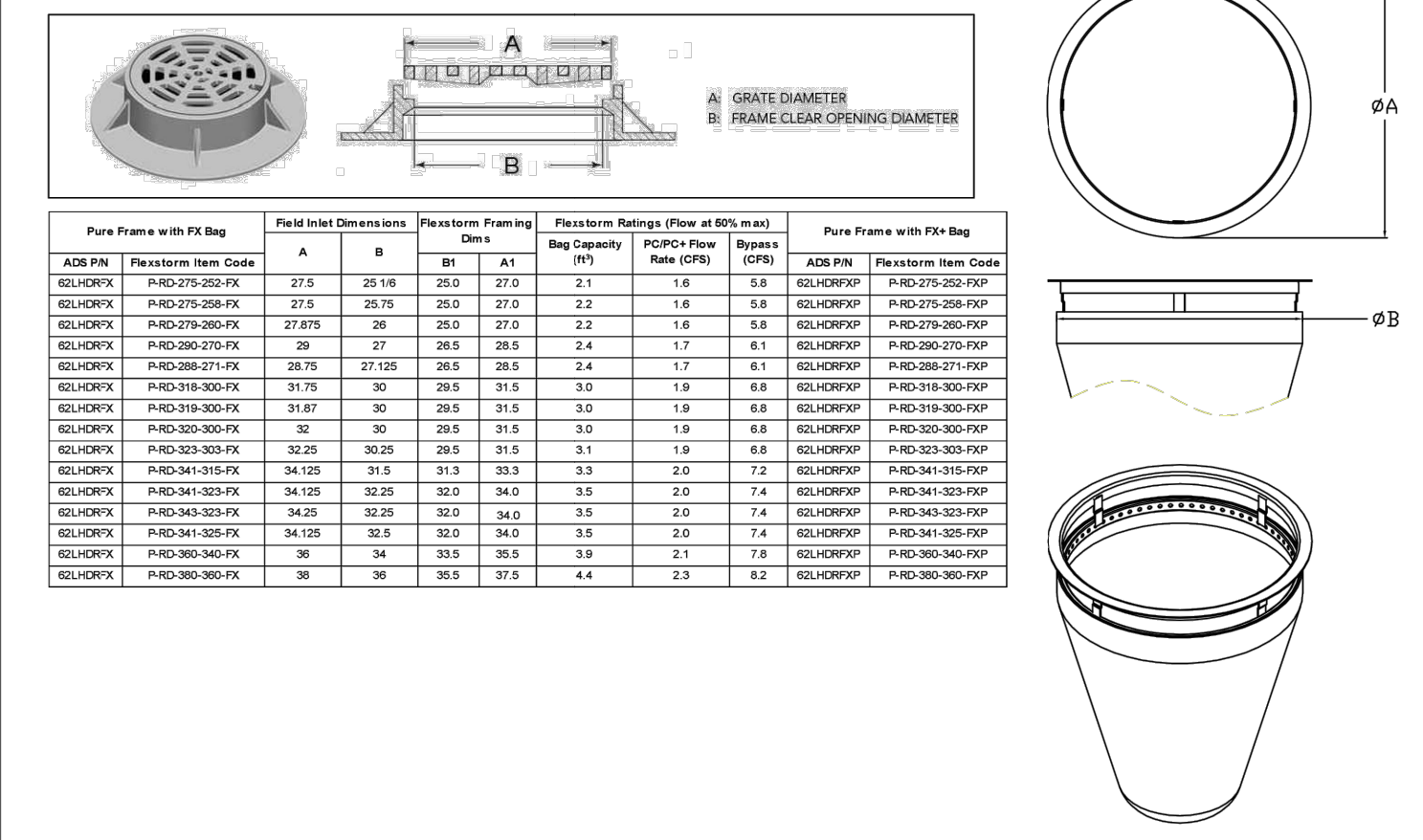


Table of technical specifications for FLEXSTORM storm inlets, including model numbers, dimensions, and ratings.

- NOTES:
1. RATINGS SHOWN ARE FOR STANDARD 22" BAG DEPTH "SHORT" 12" DEPTH BAGS ARE AVAILABLE WITH +3 SUPPLY RATING. THE RATING IS -0.00.
2. THE FOLLOWING REQUIRES ADDITIONAL REVIEW
-GRATES WITH EXTENDED BOTTOMS
-ANY OBSTRUCTED INLET OPENINGS

Logo for FLEXSTORM PURE with contact information for Inlet & Pipe Protection, Inc.

FLEXSTORM P/Ns 62MHRFX & 62MHRFXP

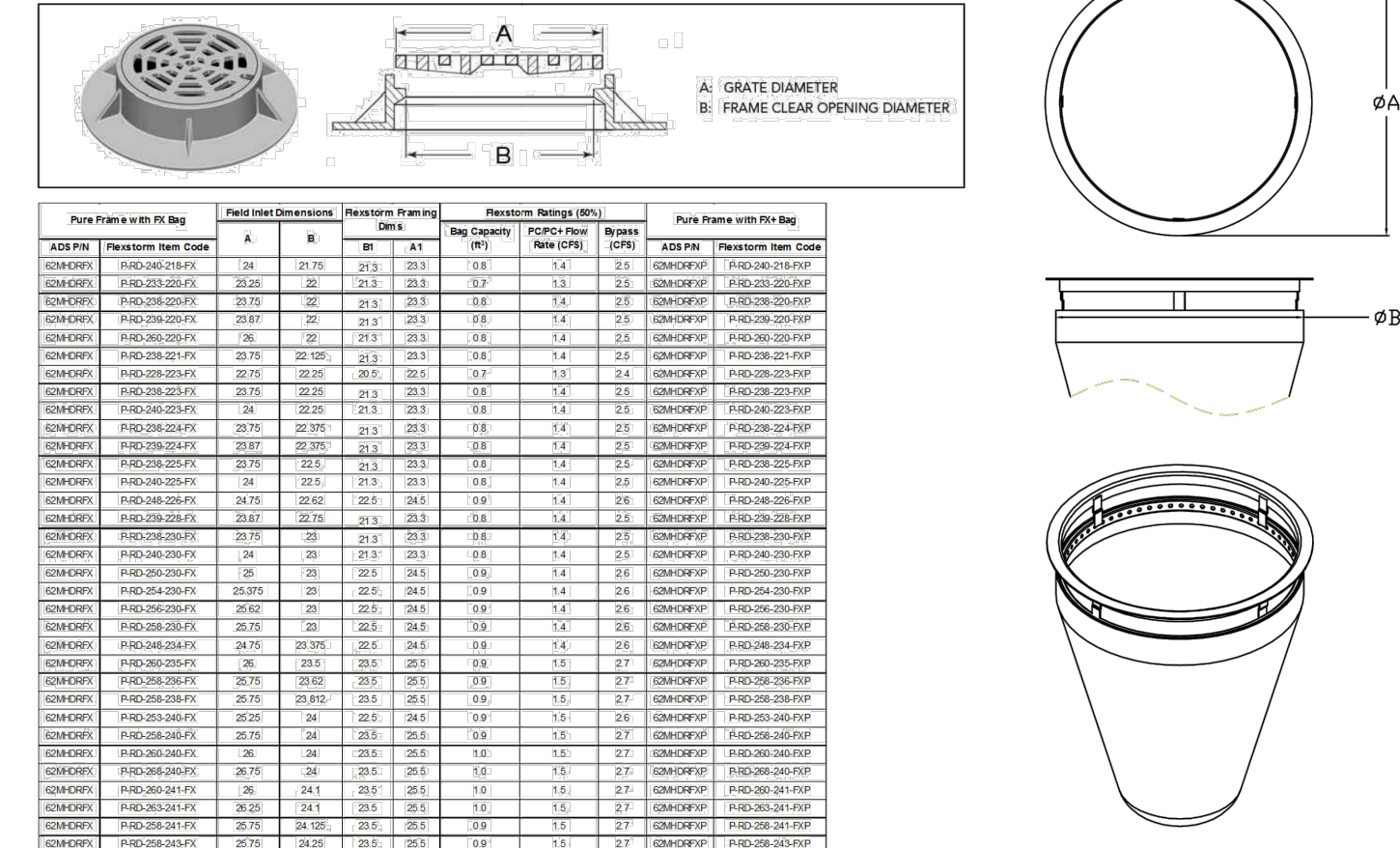
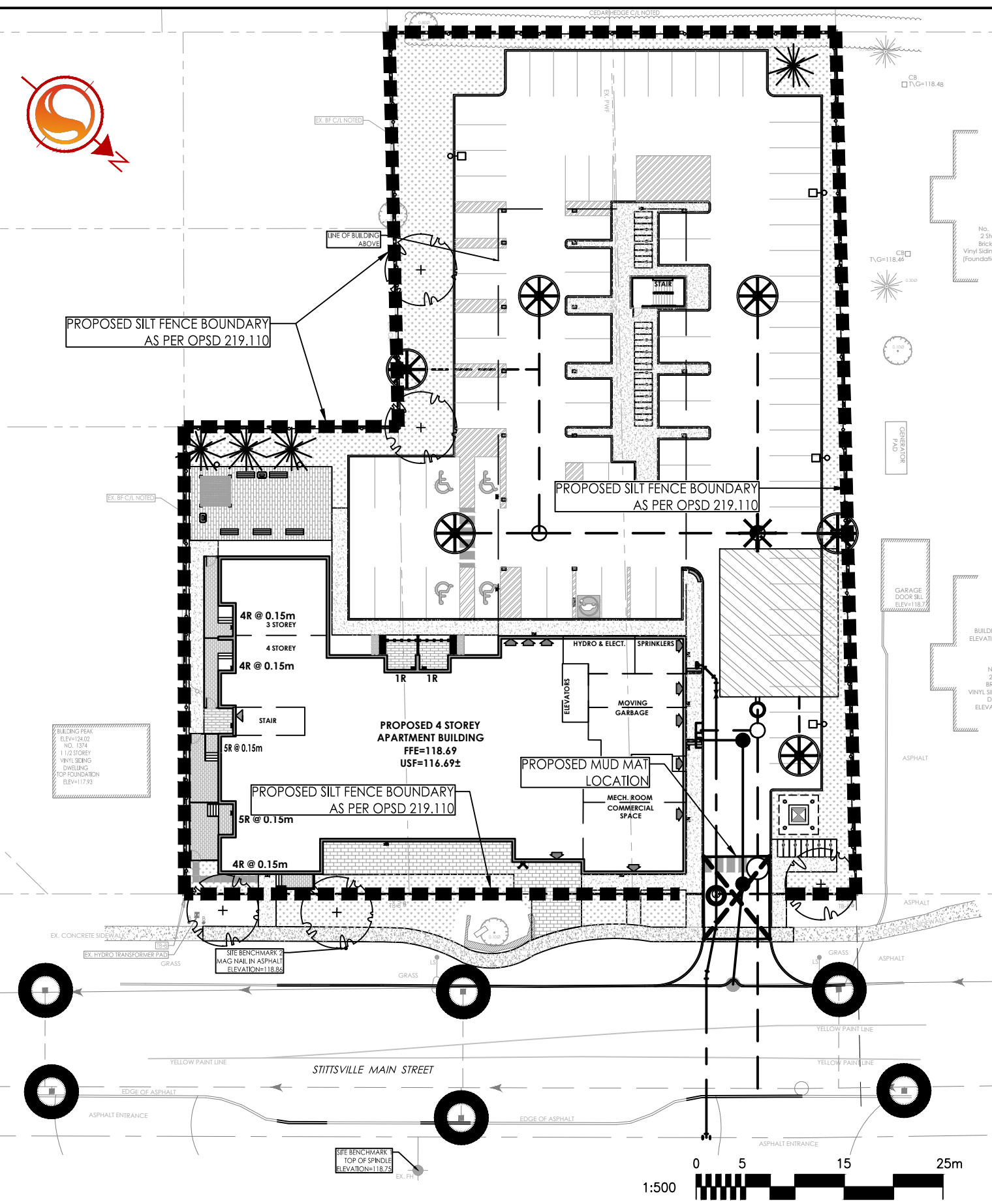
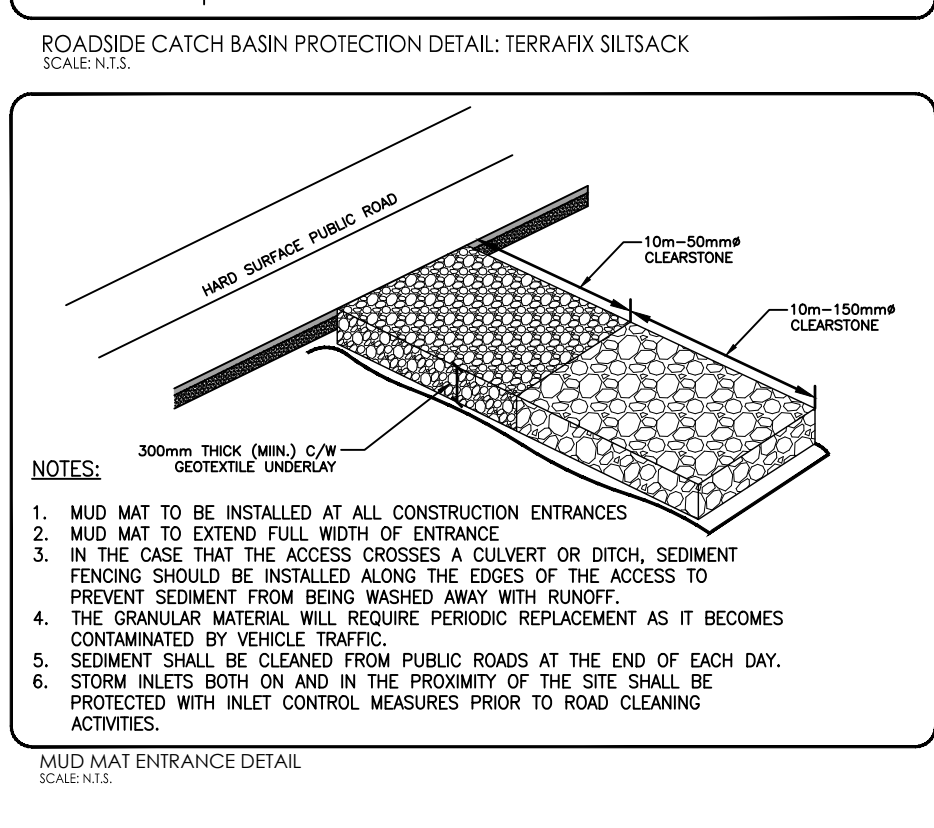
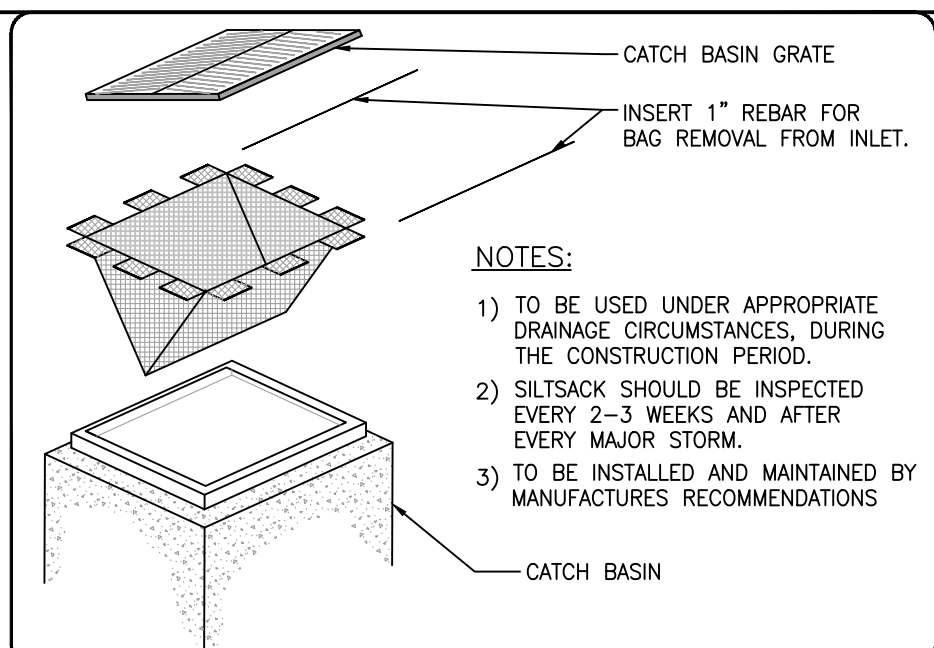


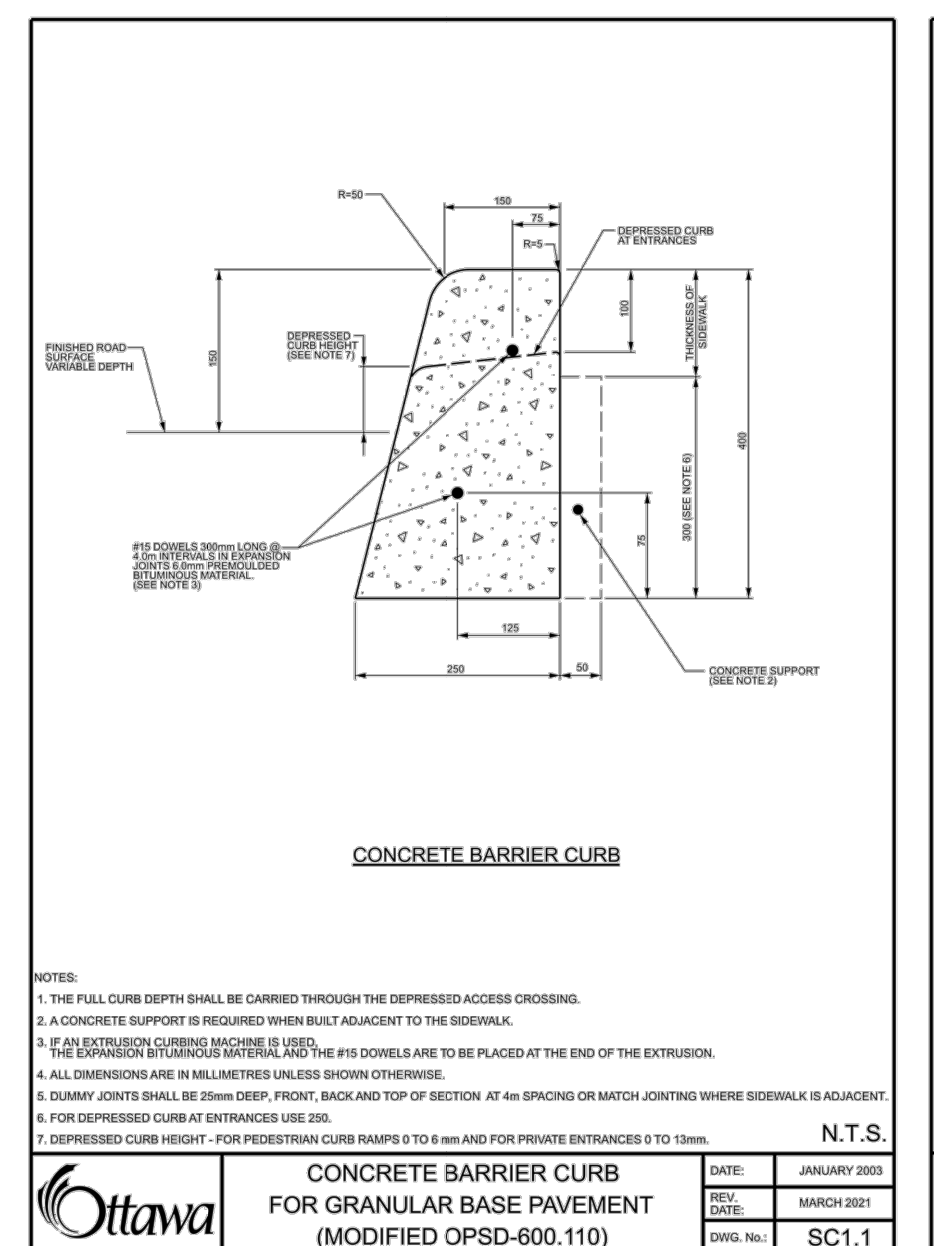
Table of technical specifications for FLEXSTORM storm inlets, including model numbers, dimensions, and ratings.

- NOTES:
1. RATINGS SHOWN ARE FOR STANDARD 22" BAG DEPTH "SHORT" 12" DEPTH BAGS ARE AVAILABLE WITH +3 SUPPLY RATING. THE RATING IS -0.00.
2. THE FOLLOWING REQUIRES ADDITIONAL REVIEW
-GRATES WITH EXTENDED BOTTOMS
-ANY OBSTRUCTED INLET OPENINGS

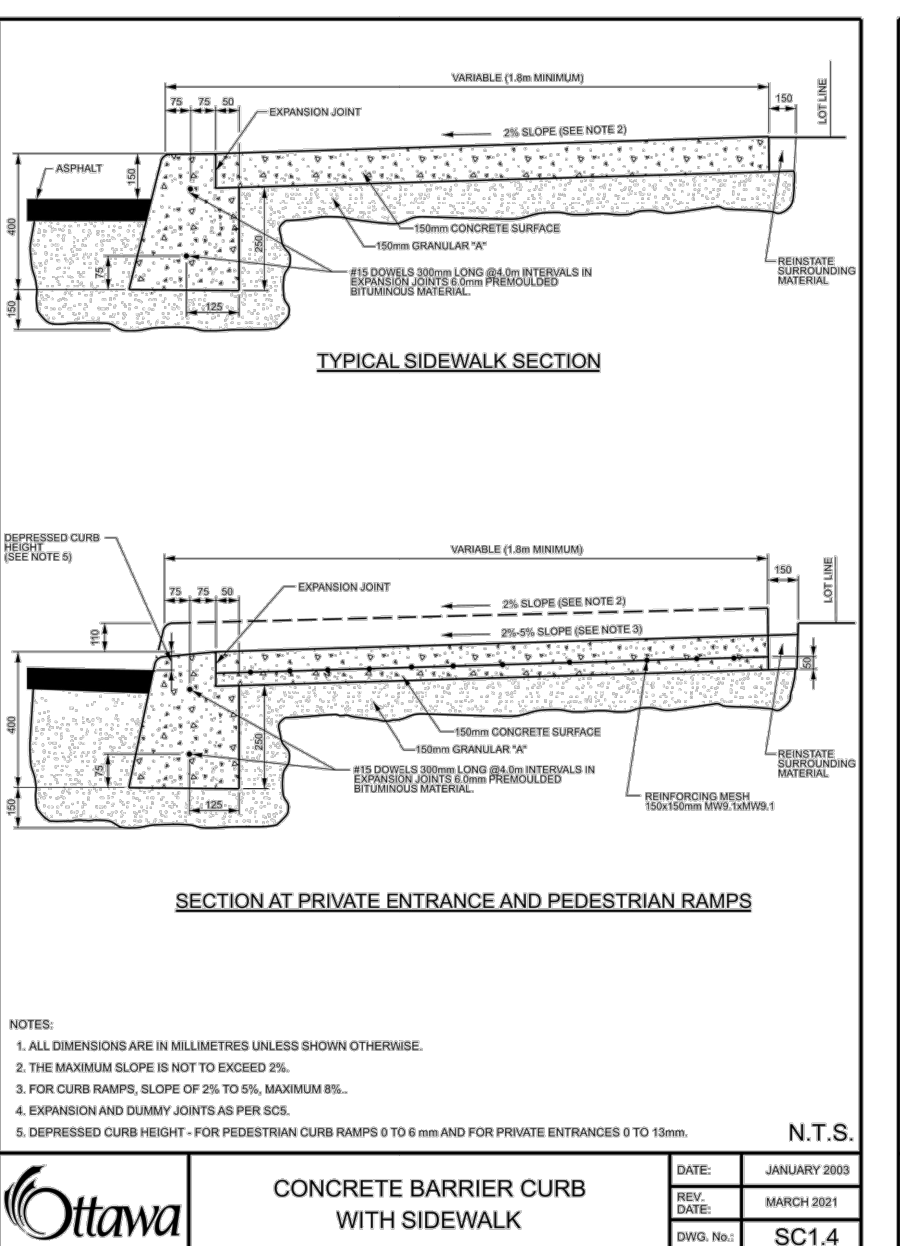
Logo for FLEXSTORM PURE with contact information for Inlet & Pipe Protection, Inc.



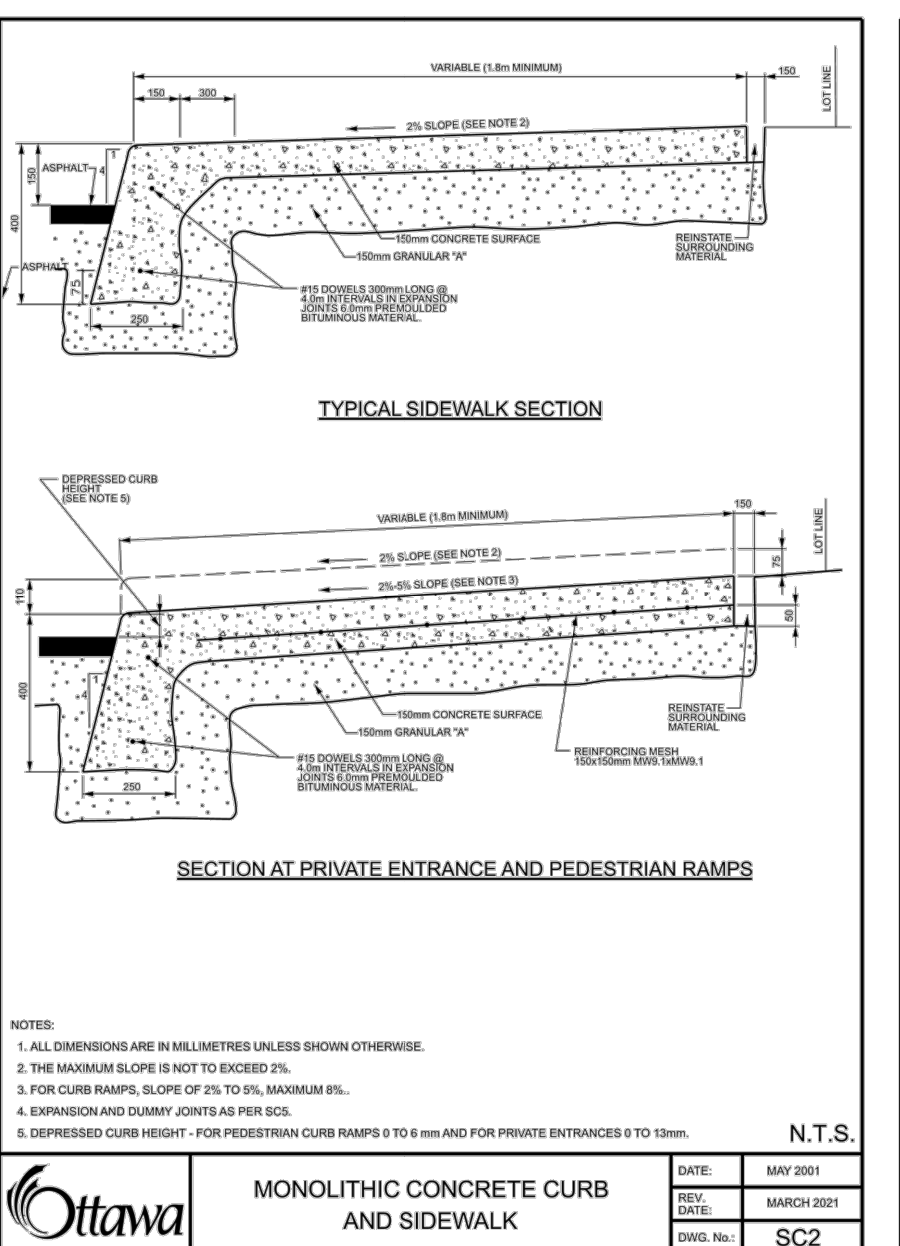
ROADSIDE CATCH BASIN PROTECTION DETAIL: TERRAFIX SILTSACK
SCALE: N.T.S.
MUD MAT ENTRANCE DETAIL
SCALE: N.T.S.



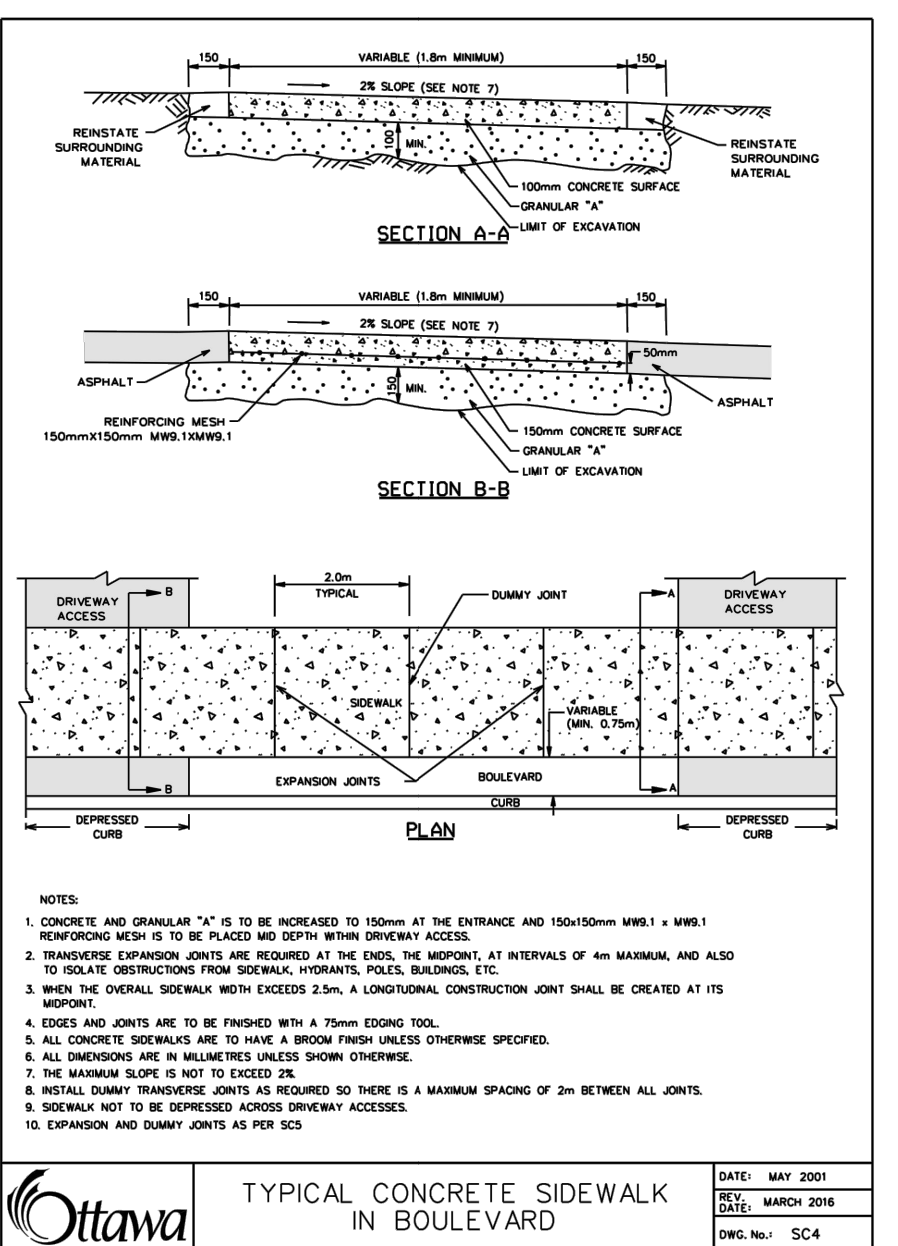
CONCRETE BARRIER CURB FOR GRANULAR BASE PAVEMENT (MODIFIED OPSD-600.110)



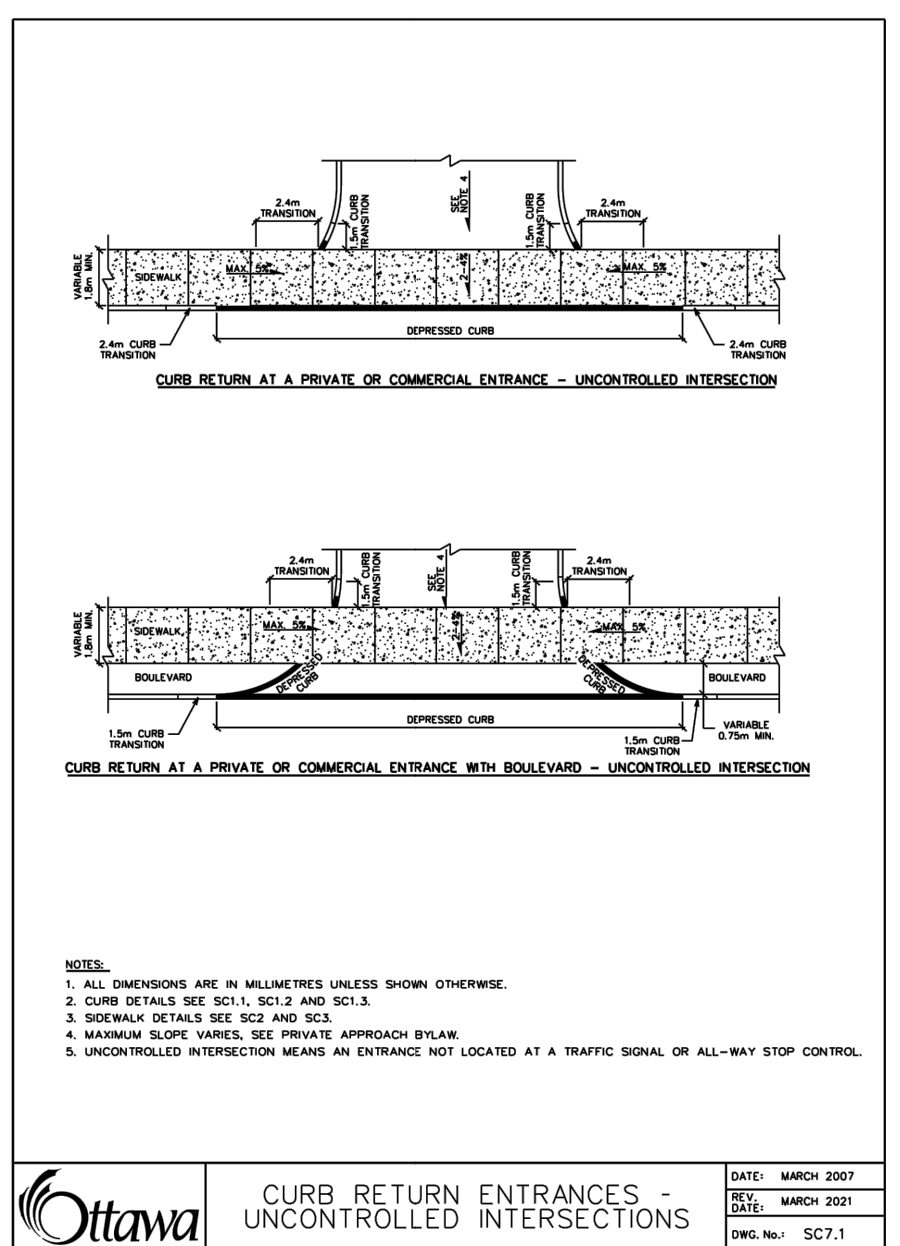
CONCRETE BARRIER CURB WITH SIDEWALK



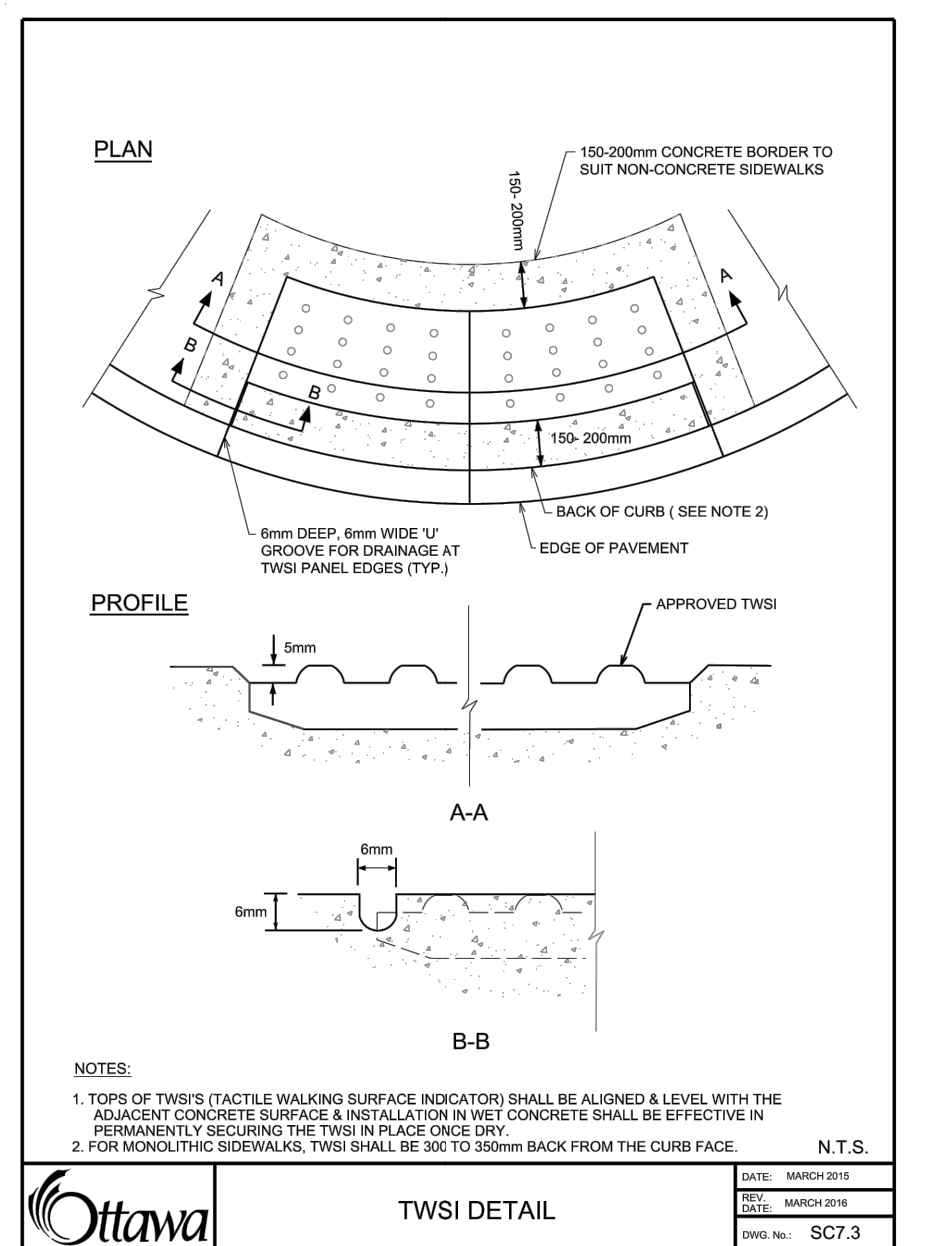
MONOLITHIC CONCRETE CURB AND SIDEWALK



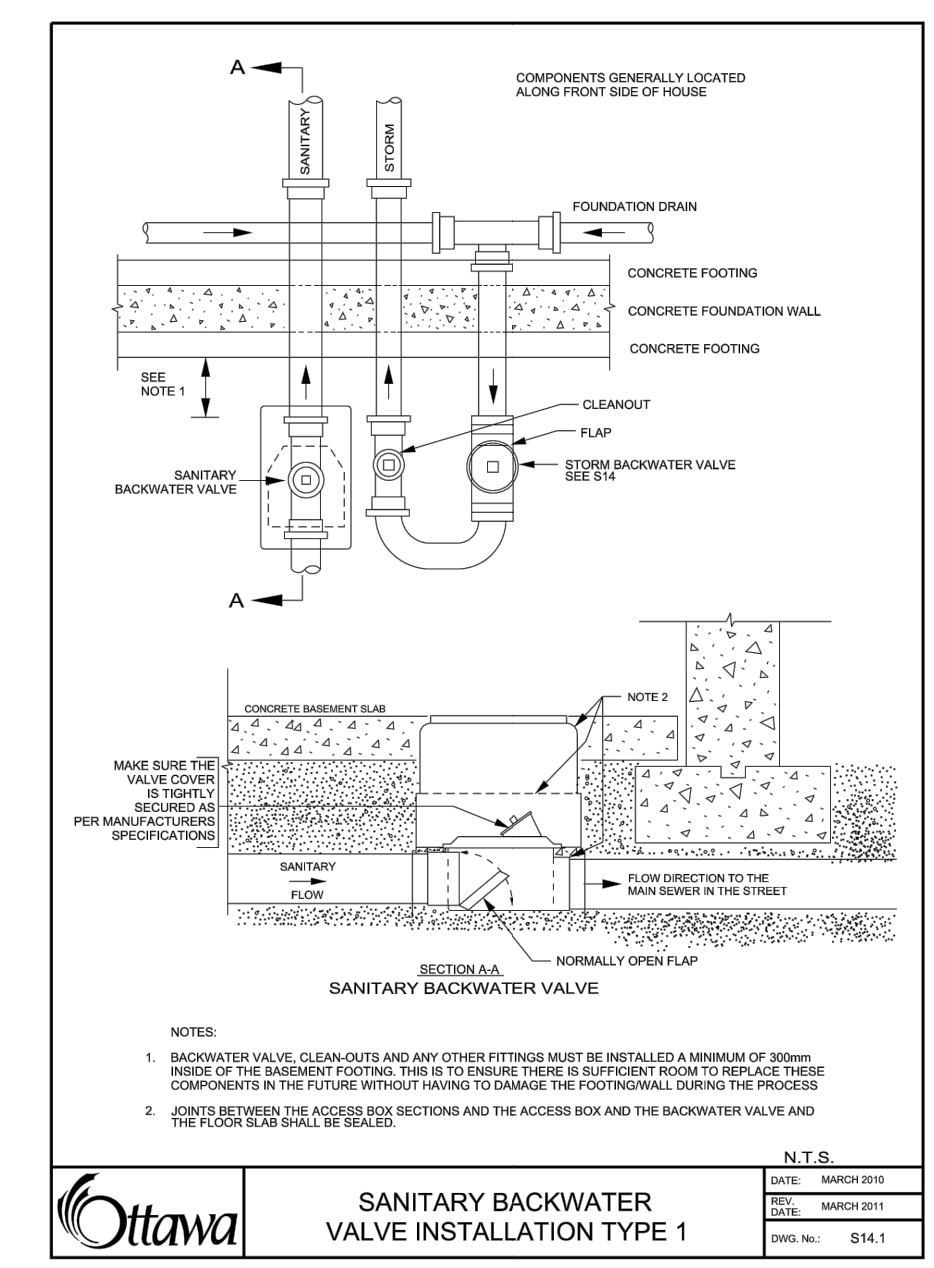
TYPICAL CONCRETE SIDEWALK IN BOULEVARD



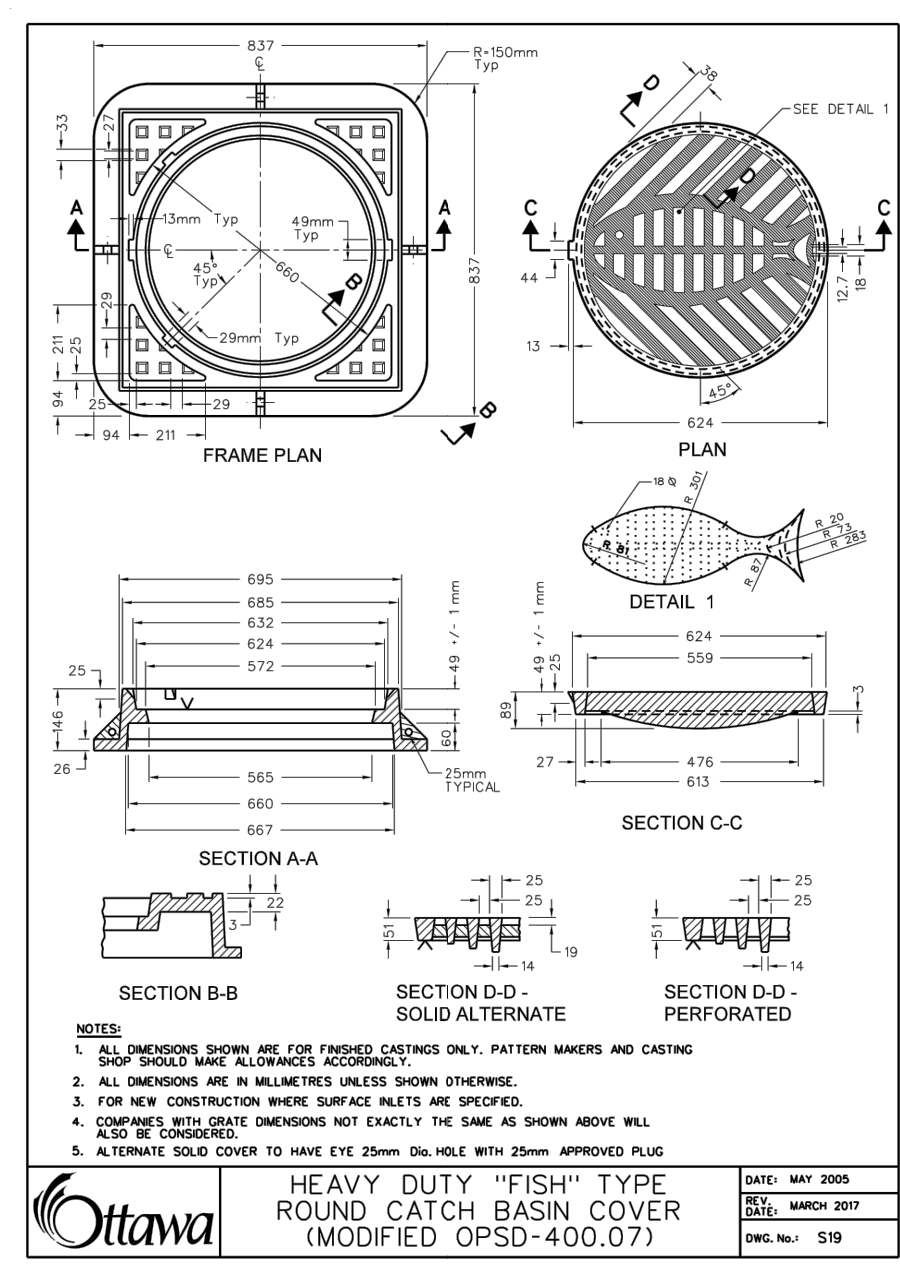
CURB RETURN ENTRANCES - UNCONTROLLED INTERSECTIONS



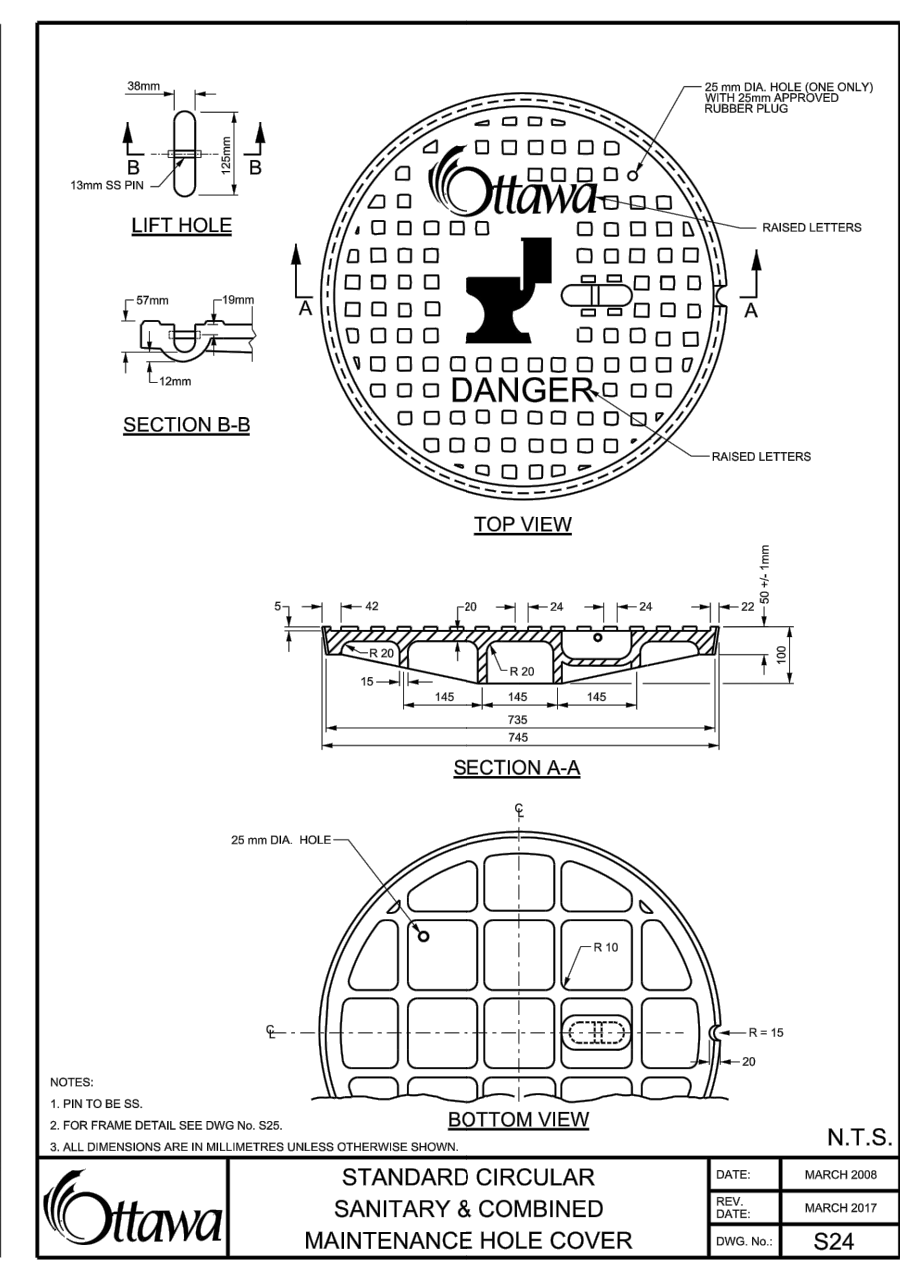
TWISI DETAIL



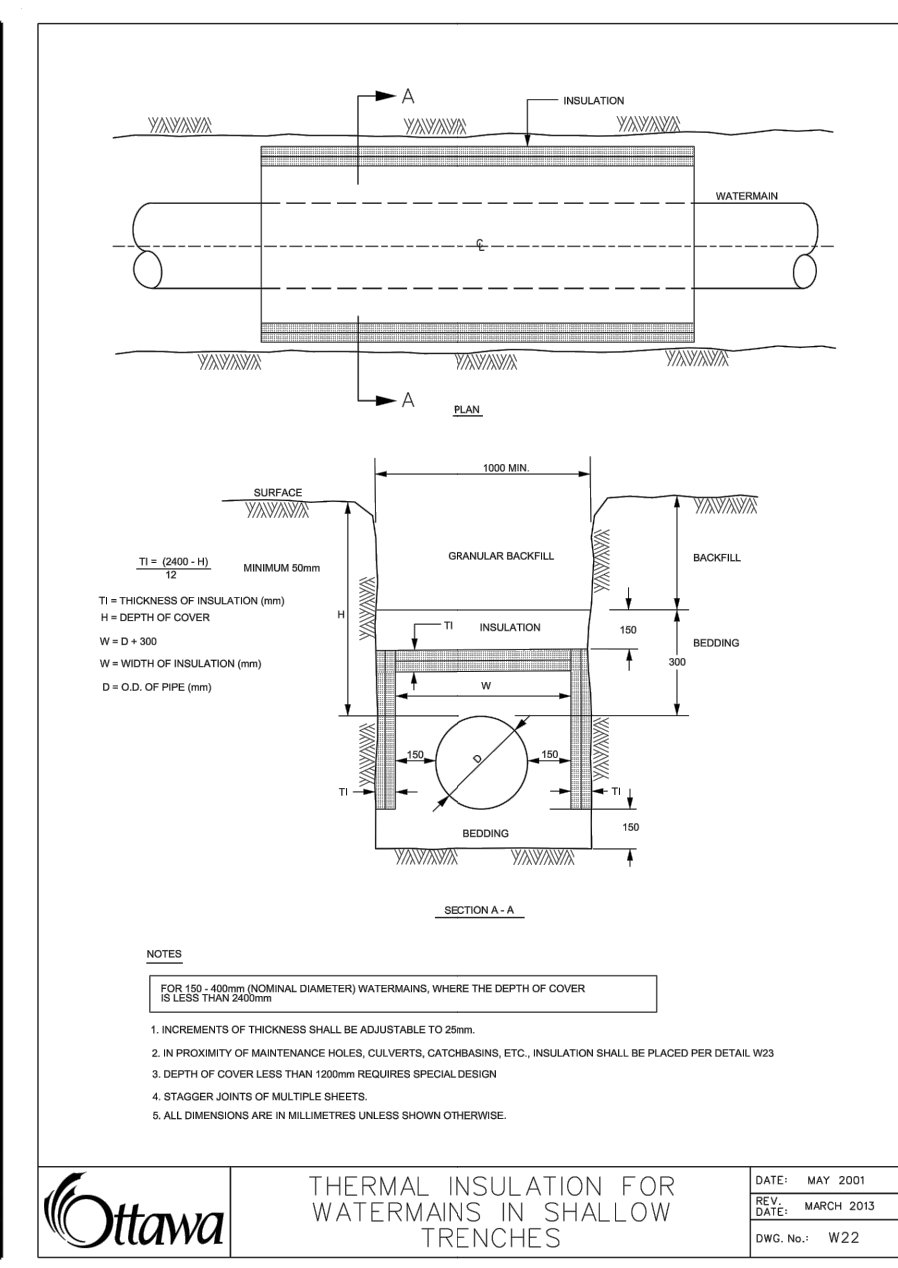
SANITARY BACKWATER VALVE INSTALLATION TYPE 1



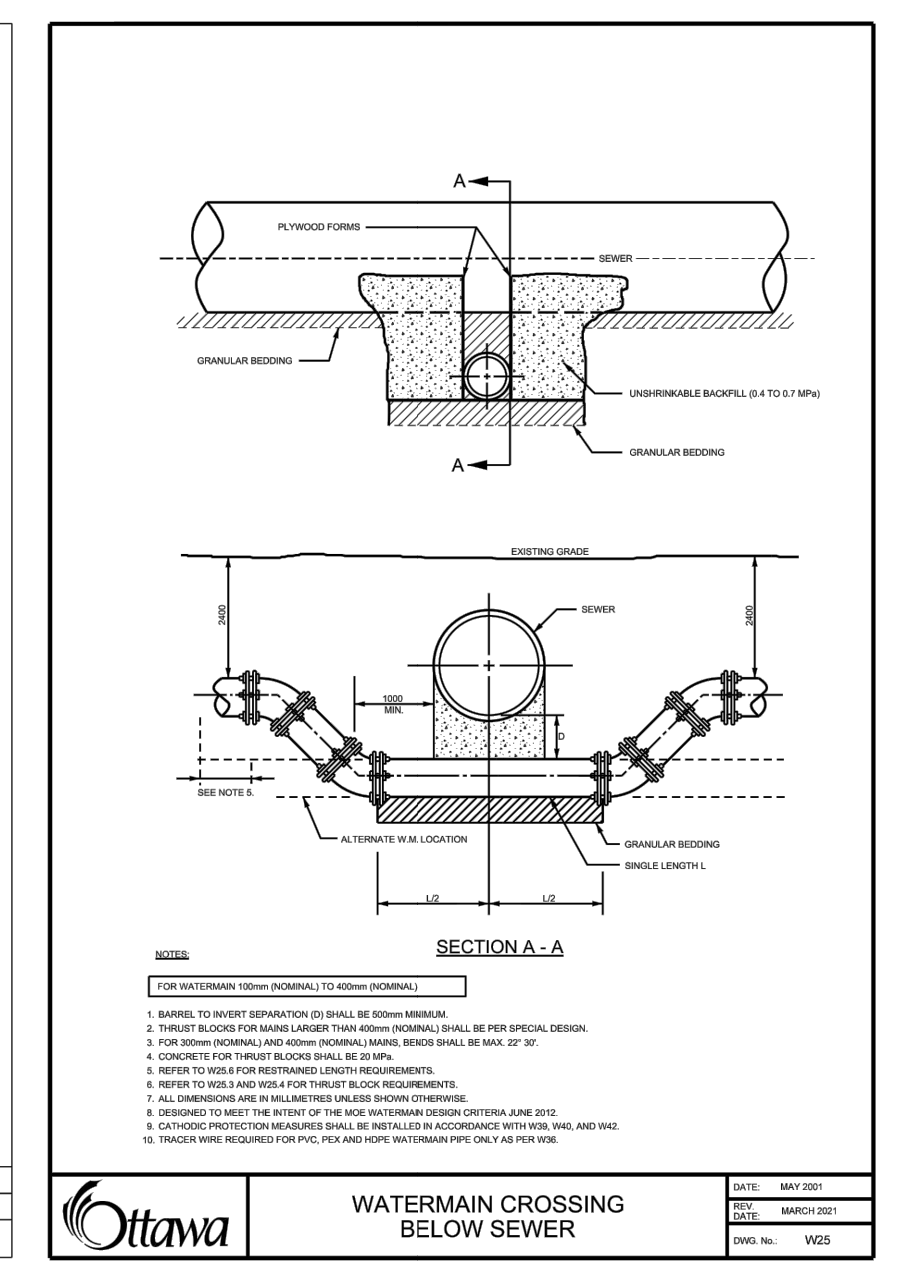
HEAVY DUTY 'FISH' TYPE ROUND CATCH BASIN COVER (MODIFIED OPSD-400.07)



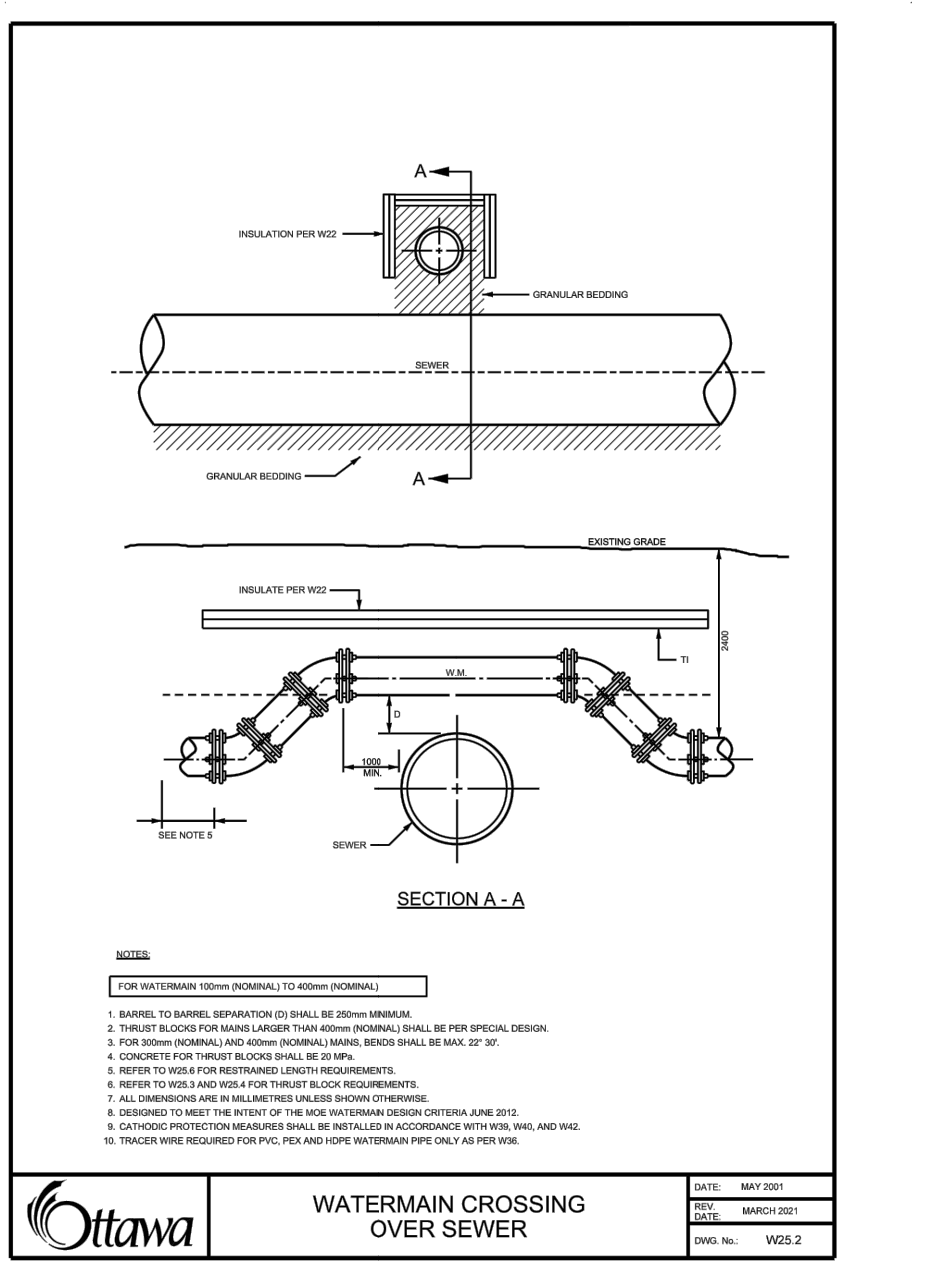
STANDARD CIRCULAR SANITARY & COMBINED MAINTENANCE HOLE COVER



THERMAL INSULATION FOR WATER MAINS IN SHALLOW TRENCHES



WATERMAIN CROSSING BELOW SEWER



WATERMAIN CROSSING OVER SEWER

Vertical text on the left margin containing drawing file information.