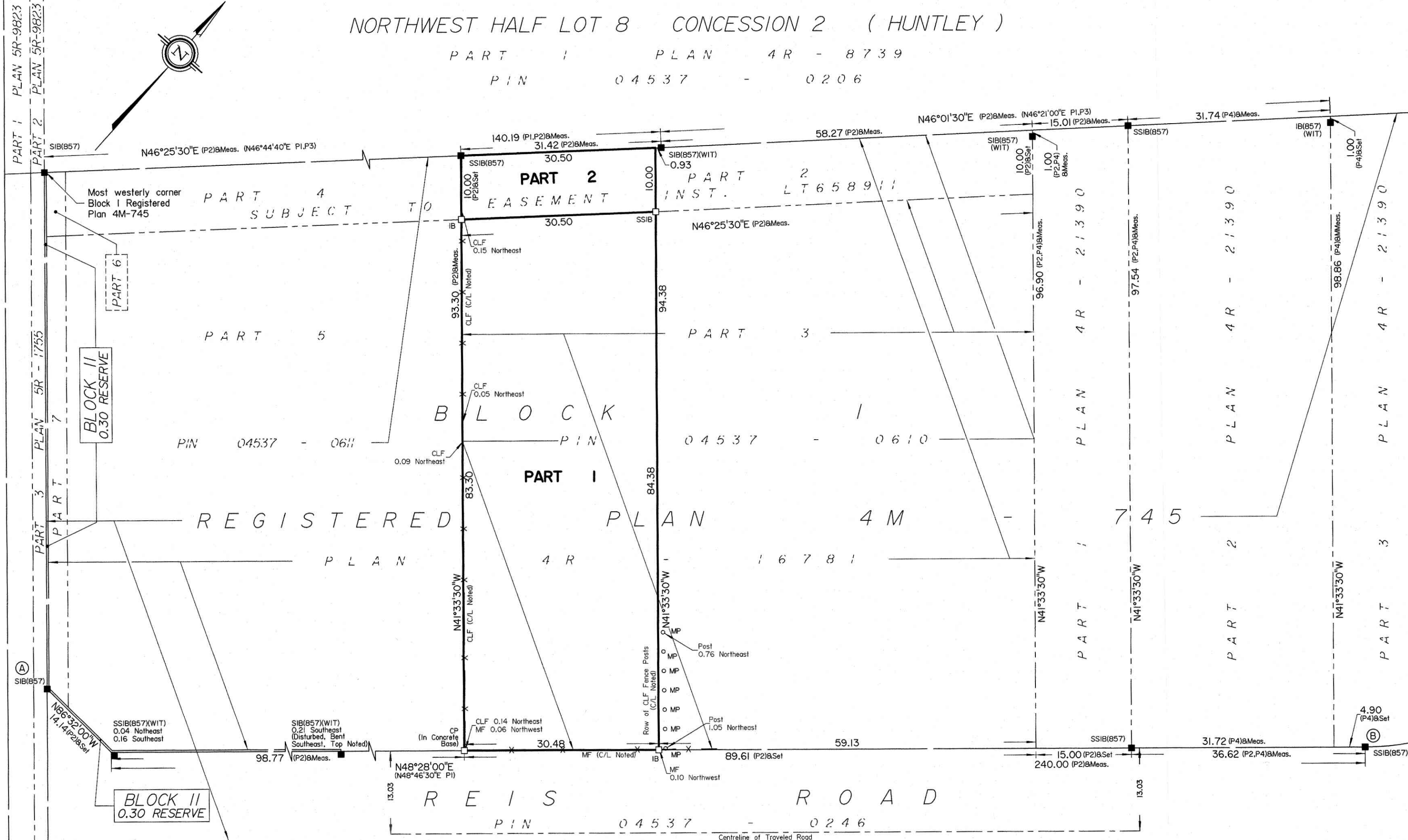


REGIONAL ROAD NO. 5 (Known as Carp Road) AND ROAD ALLOWANCE BETWEEN CONCESSIONS 2 AND 3

NORTHWEST HALF LOT 8 CONCESSION 2 (HUNTLEY)

PART 1 PLAN 4R - 8739

PIN 04537 - 0206

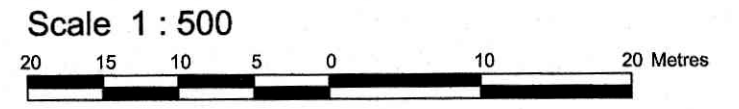


SCHEDULE			
PART	BLOCK	PLAN	PIN
1	PART OF 1	4M-745	PART OF 04537-0610
2			

Part 2: Subject to easement, Inst. LT658911.  
 PLAN OF SURVEY OF

**PART OF BLOCK 1  
 REGISTERED PLAN 4M-745  
 CITY OF OTTAWA**

Surveyed by Annis, O'Sullivan, Vollebakk Ltd.



The intended plot size of the plan is 610 mm in width by 356 mm in height when plotted at a scale of 1:500.

**Metric**  
 DISTANCES AND COORDINATES SHOWN ON THIS PLAN ARE IN METRES AND CAN BE CONVERTED TO FEET BY DIVIDING BY 0.3048.

**Surveyor's Certificate**

I CERTIFY THAT:  
 1. This survey and plan are correct and in accordance with the Surveys Act, the Surveyors Act and the Land Titles Act and the regulations made under them.  
 2. The survey was completed on the 22nd day of July, 2022.

July 25, 2022 Date  
 T. Hartwick Ontario Land Surveyor

This plan relates to AOLS Plan Submission form number: V-27790

**ANNIS, O'SULLIVAN, VOLLEBEKK LTD.**  
 14 Concourse Gate, Suite 500  
 Nepean, Ont. K2E 7S6  
 Phone: (613) 727-0850 / Fax: (613) 727-1079  
 Email: Nepean@aosvltld.com

Ontario Land Surveyors Job No. 22926-22 13362163 PIBIKI 4M-745 R F ISW

- Notes & Legend**
- Denotes Survey Monument Planted
  - Denotes Survey Monument Found
  - SIB Standard Iron Bar
  - SSIB Short Standard Iron Bar
  - IB Iron Bar
  - (WIT) Witness
  - (AOG) Annis, O'Sullivan, Vollebakk Ltd.
  - Meas. Measured
  - (P1) Registered Plan 4M-745
  - (P2) Plan 4R-16781
  - (P3) Plan 4R-8739
  - (P4) Plan 4R-21390
  - MF Metal Fence
  - CLF Chain Link Fence
  - o MP Metal Post

Distances shown on this plan are ground distances and can be converted to grid distances by multiplying by the combined scale factor of 0.999902.

Bearings are grid, derived from Can-Net 2016 Real Time Network GPS observations on reference points A and B, shown hereon, having a bearing of N50°45'20"W and are referenced to Specified Control Points 01919680037 and 01919791051, MTM Zone 9 (76°30' West Longitude) NAD-83 (original).

Coordinates are derived from Can-Net 2016 Real Time Network GPS observations referenced to Specified Control Points 01919680037 and 01919791051, MTM Zone 9 (76°30' West Longitude) NAD-83 (original).

Coordinate values are to urban accuracy in accordance with O. Reg. 216/10.

. 01919680037	Northing	5023507.89	Easting	351533.87
. 01919791051	Northing	5032569.51	Easting	343633.72
. Point A	Northing	5018246.22	Easting	345275.39
. Point B	Northing	5018404.47	Easting	345469.13

Caution: Coordinates cannot, in themselves, be used to re-establish corners or boundaries shown on this plan.