

GRADIENTWIND

ENGINEERS & SCIENTISTS

PEDESTRIAN LEVEL WIND STUDY

1200 Maritime Way
Ottawa, Ontario

Report: 20-207-PLW-2022



July 22, 2022

PREPARED FOR

Claridge Homes
210 Gladstone Avenue
Ottawa, ON K2P 0Y6

PREPARED BY

David Huitema, M.Eng., Junior Wind Scientist
Steven Hall, M.A.Sc., P.Eng., Senior Wind Engineer

EXECUTIVE SUMMARY

This report describes a pedestrian level wind (PLW) study undertaken to satisfy Zoning By-law Amendment and Site Plan Control application requirements for the proposed multi-building development located at 1200 Maritime Way in Ottawa, Ontario (hereinafter referred to as “subject site” or “proposed development”). Our mandate within this study is to investigate pedestrian wind comfort and safety within and surrounding the subject site, and to identify areas where wind conditions may interfere with certain pedestrian activities so that mitigation measures may be considered, where required.

The study involves simulation of wind speeds for selected wind directions in a three-dimensional (3D) computer model using the computational fluid dynamics (CFD) technique, combined with meteorological data integration, to assess pedestrian wind comfort and safety within and surrounding the subject site according to City of Ottawa wind comfort and safety criteria. The results and recommendations derived from these considerations are detailed in the main body of the report (Section 5), illustrated in Figures 3A-7, and summarized as follows:

- 1) While the introduction of the proposed building is predicted to generally increase the nearby wind levels, all grade-level areas within and surrounding the subject site are predicted to experience conditions that are considered acceptable for the intended pedestrian uses throughout the year. Specifically, conditions over surrounding sidewalks, walkways, surface parking, and in the vicinity of building access points, are considered acceptable. Exceptions are described as follows:
 - a. Conditions over the landscaped area situated to the south of the subject site are predicted to be suitable for strolling or better during the typical use period, defined as May to October, inclusive. Conditions over the landscape area to the northeast of the West Tower are predicted to be mostly suitable for standing during the same period. If these areas are to accommodate outdoor amenity space, mitigation will be required to ensure conditions are suitable for sitting.
 - b. Conditions over the landscape area to the northwest of the East Tower are predicted to be suitable for a mix of sitting and standing during the typical use period. Depending on the programming of the space, the noted wind conditions may be considered acceptable.



If the southwest corner of the area includes seating or lounging spaces, mitigation will be required to ensure conditions are suitable for sitting.

- c. If necessary, mitigation for the wind conditions noted above may include landscaping features such as wind screens, topographic depressions or berms, and/or coniferous plantings in dense arrangements.
- 2) The foregoing statements and conclusions apply to common weather systems, during which no dangerous wind conditions, as defined in Section 4.4, are expected anywhere over the subject site. During extreme weather events, (e.g., thunderstorms, tornadoes, and downbursts), pedestrian safety is the main concern. However, these events are generally short-lived and infrequent and there is often sufficient warning for pedestrians to take appropriate cover.

TABLE OF CONTENTS

1. INTRODUCTION	1
2. TERMS OF REFERENCE	1
3. OBJECTIVES.....	3
4. METHODOLOGY.....	3
4.1 Computer-Based Context Modelling.....	3
4.2 Wind Speed Measurements	4
4.3 Historical Wind Speed and Direction Data	4
4.4 Pedestrian Comfort and Safety Criteria – City of Ottawa	6
5. RESULTS AND DISCUSSION	8
5.1 Wind Comfort Conditions – Ground Floor	9
5.2 Wind Safety	11
5.3 Applicability of Results	12
6. CONCLUSIONS AND RECOMMENDATIONS.....	12

FIGURES

APPENDICES

Appendix A – Simulation of the Atmospheric Boundary Layer



1. INTRODUCTION

Gradient Wind Engineering Inc. (Gradient Wind) was retained by Claridge Homes to undertake a pedestrian level wind (PLW) study to satisfy Zoning By-law Amendment and Site Plan Control application requirements for the proposed multi-building development located at 1200 Maritime Way in Ottawa, Ontario (hereinafter referred to as “subject site” or “proposed development”). Our mandate within this study is to investigate pedestrian wind comfort and safety within and surrounding the subject site, and to identify areas where wind conditions may interfere with certain pedestrian activities so that mitigation measures may be considered, where required.

Our work is based on industry standard computer simulations using the computational fluid dynamics (CFD) technique and data analysis procedures, City of Ottawa wind comfort and safety criteria, architectural drawings prepared by NEUF Architect(e)s, in July 2022, surrounding street layouts and existing and approved future building massing information obtained from the City of Ottawa, as well as recent satellite imagery.

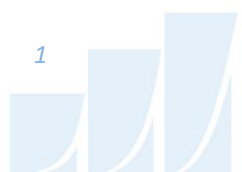
2. TERMS OF REFERENCE

The subject site is located at 1200 Maritime Way in Ottawa; located at the west side of a parcel of land bounded by Maritime Way to the north and northwest, an existing pond to the east, Highway 417 to the southeast, and Kanata Avenue to the southwest. Throughout this report, Highway 417 is referred to as the south elevation.

The development comprises two residential buildings; a near rectangular 30-storey building including a seven-storey podium situated on the east side of the site (East Tower) and a nominally rectangular 28-storey building including a seven-storey podium at the west side of the site (West Tower). A driveway at the north side of the site provides access to surface parking, a circular drop-off area, and a ramp to three shared levels of below-grade parking.



*Architectural Rendering, East Perspective
(Courtesy of NEUF Architect(e)s)*



The ground floor of the East Tower includes a residential main lobby, residential units, a mail room, and offices to the west, commercial spaces to the north fronting Maritime Way, residential units to the east, and indoor amenities to the south. Level 2 includes indoor amenity space at the southeast corner and residential units throughout the remainder of the level. Levels 3-30 are reserved for residential use. The floorplate sets back from the north and southeast at Level 3, and from the north and south at Level 8, above which the tower continues to rise with a nominally rectangular planform.

The ground floor of the West Tower includes a residential main lobby to the east, residential units to the north, and indoor amenities throughout the remainder of the level. Levels 2-28 are reserved for residential use. The floorplate sets back from the north at Level 8, above which the tower continues to rise with a nominally rectangular planform.

The shortest distance between the podia serving the East Tower and West Tower is approximately 22 metres (m), while the shortest distance between the buildings above the podia, is approximately 30 m.

The near-field surroundings (defined as an area within 200 m of the subject site) include a 9-storey hotel to the west, a 7-storey retirement home to the immediate northwest, and a 5-storey hotel to the north. The remainder of the near field comprises Highway 417 to the south, Kanata Avenue to the west, a forested area to the northwest, and undeveloped land to the north and northeast. The far-field surroundings (defined as an area beyond the near-field but within a 2-kilometre (km) radius of the subject site) contribute a mix of suburban massing and the Kanata Golf and Country Club from the northwest clockwise to the north, mostly suburban massing from the north clockwise to the south, a mix of suburban massing and low-rise commercial developments from the south clockwise to the west, and a mix of suburban massing and a densely wooded area from the west clockwise to the northwest.

Site plans for the proposed and existing massing scenarios are illustrated in Figures 1A and 1B, while Figures 2A-2H illustrate the computational models used to conduct the study. The existing massing scenario includes the existing massing and any changes which have been approved by the City of Ottawa.



3. OBJECTIVES

The principal objectives of this study are to (i) determine pedestrian level wind comfort and safety conditions at key areas within and surrounding the development site; (ii) identify areas where wind conditions may interfere with the intended uses of outdoor spaces; and (iii) recommend suitable mitigation measures, where required.

4. METHODOLOGY

The approach followed to quantify pedestrian wind conditions over the site is based on CFD simulations of wind speeds across the study site within a virtual environment, meteorological analysis of the Ottawa area wind climate, and synthesis of computational data with City of Ottawa wind comfort and safety criteria¹. The following sections describe the analysis procedures, including a discussion of the noted pedestrian wind criteria.

4.1 Computer-Based Context Modelling

A computer based PLW study was performed to determine the influence of the wind environment on pedestrian comfort over the proposed development site. Pedestrian comfort predictions, based on the mechanical effects of wind, were determined by combining measured wind speed data from CFD simulations with statistical weather data obtained from Ottawa Macdonald-Cartier International Airport. The general concept and approach to CFD modelling is to represent building and topographic details in the immediate vicinity of the study site on the surrounding model, and to create suitable atmospheric wind profiles at the model boundary. The wind profiles are designed to have similar mean and turbulent wind properties consistent with actual site exposures.

An industry standard practice is to omit trees, vegetation, and other existing and planned landscape elements from the model due to the difficulty of providing accurate seasonal representation of vegetation. The omission of trees and other landscaping elements produces slightly stronger wind speeds.

¹ City of Ottawa Terms of References: Wind Analysis
https://documents.ottawa.ca/sites/default/files/torwindanalysis_en.pdf

4.2 Wind Speed Measurements

The PLW analysis was performed by simulating wind flows and gathering velocity data over a CFD model of the site for 12 wind directions. The CFD simulation model was centered on the study building, complete with surrounding massing within a radius of 480 m.

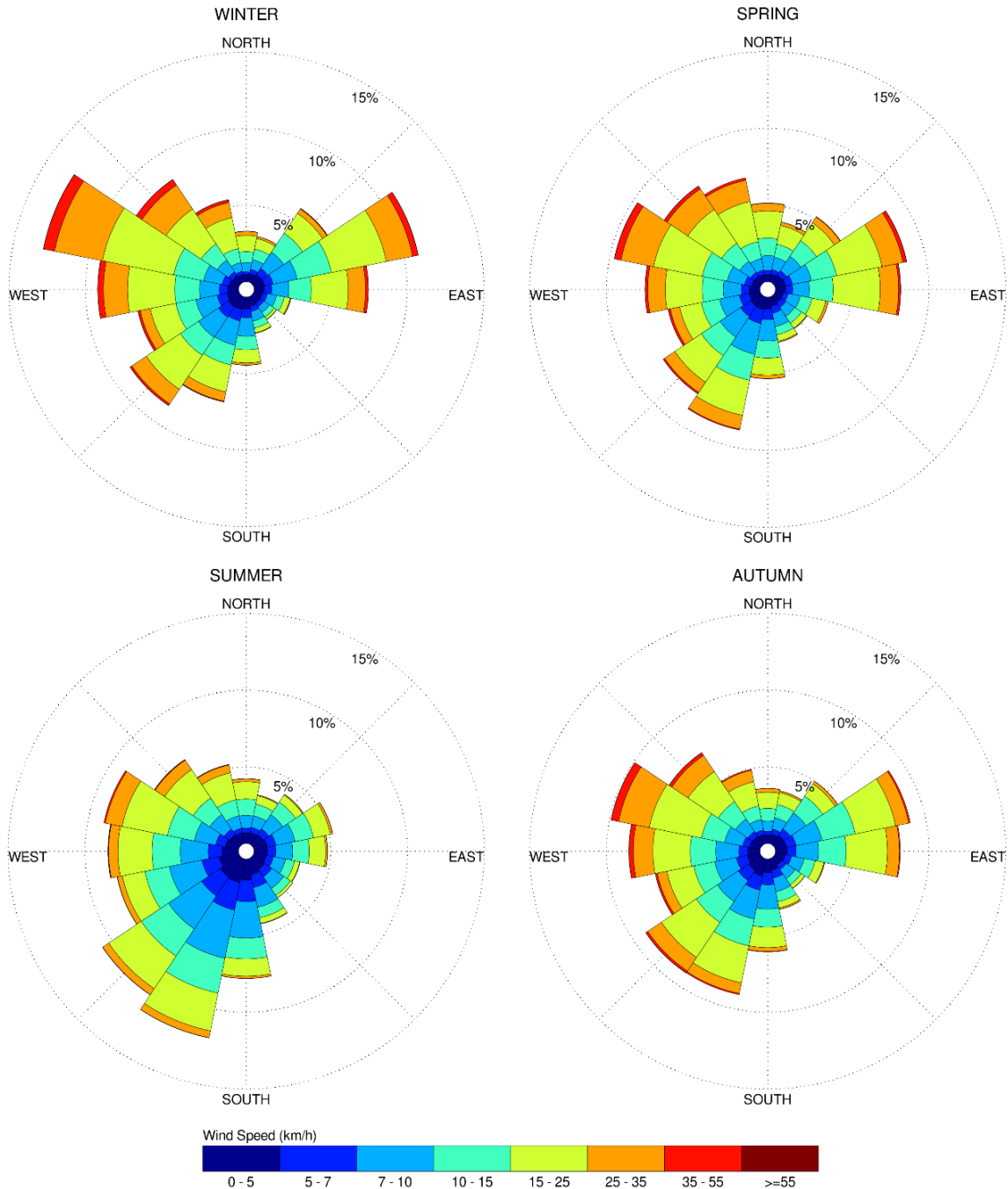
Mean and peak wind speed data obtained over the study site for each wind direction were interpolated to 36 wind directions at 10° intervals, representing the full compass azimuth. Measured wind speeds approximately 1.5 m above local grade were referenced to the wind speed at gradient height to generate mean and peak velocity ratios, which were used to calculate full-scale values. Gradient height represents the theoretical depth of the boundary layer of the earth's atmosphere, above which the mean wind speed remains constant. Further details of the wind flow simulation technique are presented in Appendix A.

4.3 Historical Wind Speed and Direction Data

A statistical model for winds in Ottawa was developed from approximately 40 years of hourly meteorological wind data recorded at Ottawa Macdonald-Cartier International Airport and obtained from Environment and Climate Change Canada. Wind speed and direction data were analyzed for each month of the year to determine the statistically prominent wind directions and corresponding speeds, and to characterize similarities between monthly weather patterns.

The statistical model of the Ottawa area wind climate, which indicates the directional character of local winds on a seasonal basis, is illustrated on the following page. The plots illustrate seasonal distribution of measured wind speeds and directions in kilometers per hour (km/h). Probabilities of occurrence of different wind speeds are represented as stacked polar bars in sixteen azimuth divisions. The radial direction represents the percentage of time for various wind speed ranges per wind direction during the measurement period. The preferred wind speeds and directions can be identified by the longer length of the bars. For Ottawa, the most common winds occur for westerly wind directions, followed by those from the east, while the most common wind speeds are below 36 km/h. The directional preference and relative magnitude of wind speed changes somewhat from season to season.

SEASONAL DISTRIBUTION OF WIND OTTAWA MACDONALD-CARTIER INTERNATIONAL AIRPORT



Notes:

1. Radial distances indicate percentage of time of wind events.
2. Wind speeds are mean hourly in km/h, measured at 10 m above the ground.



4.4 Pedestrian Comfort and Safety Criteria – City of Ottawa

Pedestrian comfort and safety criteria are based on the mechanical effects of wind without consideration of other meteorological conditions (i.e., temperature, relative humidity). The comfort criteria assume that pedestrians are appropriately dressed for a specified outdoor activity during any given season. Five pedestrian comfort classes are based on 20% non-exceedance mean wind speed ranges, which include (1) Sitting; (2) Standing; (3) Strolling; (4) Walking; and (5) Uncomfortable. More specifically, the comfort classes and associated mean wind speed ranges are summarized as follows:

- 1) **Sitting:** Mean wind speeds no greater than 10 km/h occurring at least 80% of the time. The equivalent gust wind speed is approximately 16 km/h.
- 2) **Standing:** Mean wind speeds no greater than 14 km/h occurring at least 80% of the time. The equivalent gust wind speed is approximately 22 km/h.
- 3) **Strolling:** Mean wind speeds no greater than 17 km/h occurring at least 80% of the time. The equivalent gust wind speed is approximately 27 km/h.
- 4) **Walking:** Mean wind speeds no greater than 20 km/h occurring at least 80% of the time. The equivalent gust wind speed is approximately 32 km/h.
- 5) **Uncomfortable:** Uncomfortable conditions are characterized by predicted values that fall below the 80% target for walking. Brisk walking and exercise, such as jogging, would be acceptable for moderate excesses of this criterion.

The pedestrian safety wind speed criterion is based on the approximate threshold that would cause a vulnerable member of the population to fall. A 0.1% exceedance gust wind speed of 90 km/h is classified as dangerous. The gust speeds, and equivalent mean speeds, are selected based on 'The Beaufort Scale', presented on the following page, which describes the effects of forces produced by varying wind speed levels on objects. Gust speeds are included because pedestrians tend to be more sensitive to wind gusts than to steady winds for lower wind speed ranges. For strong winds approaching dangerous levels, this effect is less important because the mean wind can also create problems for pedestrians.

THE BEAUFORT SCALE

Number	Description	Gust Wind Speed (km/h)	Description
2	Light Breeze	9-17	Wind felt on faces
3	Gentle Breeze	18-29	Leaves and small twigs in constant motion; wind extends light flags
4	Moderate Breeze	30-42	Wind raises dust and loose paper; small branches are moved
5	Fresh Breeze	43-57	Small trees in leaf begin to sway
6	Strong Breeze	58-74	Large branches in motion; Whistling heard in electrical wires; umbrellas used with difficulty
7	Moderate Gale	75-92	Whole trees in motion; inconvenient walking against wind
8	Gale	93-111	Breaks twigs off trees; generally impedes progress

Experience and research on people's perception of mechanical wind effects has shown that if the wind speed levels are exceeded for more than 20% of the time, the activity level would be judged to be uncomfortable by most people. For instance, if a mean wind speed of 10 km/h (equivalent gust wind speed of approximately 16 km/h) were exceeded for more than 20% of the time most pedestrians would judge that location to be too windy for sitting. Similarly, if mean wind speed of 20 km/h (equivalent gust wind speed of approximately 32 km/h) at a location were exceeded for more than 20% of the time, walking or less vigorous activities would be considered uncomfortable. As these criteria are based on subjective reactions of a population to wind forces, their application is partly based on experience and judgment.

Once the pedestrian wind speed predictions have been established throughout the site, the assessment of pedestrian comfort involves determining the suitability of the predicted wind conditions for discrete regions within and surrounding the subject site. This step involves comparing the predicted comfort classes to the desired comfort classes, which are dictated by the location type for each region (i.e., a sidewalk, building entrance, amenity space, or other). An overview of common pedestrian location types and their typical windiest desired comfort classes are summarized on the following page. Depending on the programming of a space, the desired comfort class may differ from this table.

DESIRED PEDESTRIAN COMFORT CLASSES FOR VARIOUS LOCATION TYPES

Location Types	Desired Comfort Classes
Primary Building Entrance	Standing
Secondary Building Access Point	Walking
Public Sidewalk / Bicycle Path	Walking
Outdoor Amenity Space	Sitting (Typical Use Period)
Café / Patio / Bench / Garden	Sitting (Typical Use Period)
Transit Stop (Without Shelter)	Standing
Transit Stop (With Shelter)	Walking
Public Park / Plaza	Sitting (Typical Use Period)
Garage / Service Entrance	Walking
Parking Lot	Walking
Vehicular Drop-Off Zone	Walking

5. RESULTS AND DISCUSSION

The following discussion of the predicted pedestrian wind conditions for the subject site is accompanied by Figures 3A-6B, illustrating wind conditions at grade level for the proposed and existing massing scenarios. Conditions are presented as continuous contours of wind comfort throughout the subject site and correspond to the comfort classes noted in Section 4.4. Wind conditions suitable for sitting are represented by the colour blue, standing by green, strolling by yellow, and walking by orange; uncomfortable conditions are represented by the colour magenta.

Wind conditions over the landscape areas serving the proposed development are also reported for the typical use period, which is defined as May to October, inclusive. Figure 7 illustrates wind comfort conditions consistent with the comfort classes in Section 4.4. Pedestrian wind conditions are summarized in the following pages for each area of interest.



5.1 Wind Comfort Conditions – Ground Floor

Sidewalks and Building Access Along Maritime Way: Following the introduction of the proposed development, conditions over the sidewalk areas along Maritime Way are predicted to be suitable for a mix of sitting and standing during the summer, becoming suitable for strolling or better during the remaining three seasons. Conditions in the vicinity of all building access points of the East Tower along Maritime Way are predicted to be suitable for sitting throughout the year. The noted conditions are considered acceptable according to the City of Ottawa wind comfort criteria in Section 4.4.

Conditions over the sidewalk areas along Maritime Way with the existing massing are predicted to be suitable for sitting during the summer, becoming suitable for a mix of sitting and standing during the spring and autumn, and suitable for strolling or better during the winter. While the introduction of the proposed development results in windier conditions in comparison to existing conditions, wind comfort conditions are nevertheless considered acceptable.

Walkway and Building Access East of East Tower: Conditions over the walkway along the east elevation of the East Tower are predicted to be suitable for sitting during the summer, becoming suitable for a mix of sitting and standing during the autumn, and suitable for standing during the spring and winter. Conditions in the vicinity of all building access points along the east elevation of the East Tower are predicted to be suitable for sitting throughout the year. The noted conditions are considered acceptable according to the City of Ottawa wind comfort criteria in Section 4.4.

Walkway and Building Access South of East Tower: Conditions over the walkway along the south elevation of the East Tower are predicted to be suitable for a mix of sitting and standing during the summer, becoming suitable for strolling or better during the remaining three seasons with a small region of walking during the spring and winter. Conditions in the vicinity of the single building access point along the south elevation of the East Tower are predicted to be suitable for sitting throughout the year. The noted conditions are considered acceptable according to the City of Ottawa wind comfort criteria in Section 4.4.



Building Access West of East Tower: Conditions in the vicinity of the building access points along the west elevation of the East Tower are predicted to be suitable for sitting during the summer, becoming suitable for standing, or better, during the remaining three seasons. The noted conditions are considered acceptable according to the City of Ottawa wind comfort criteria in Section 4.4.

Landscaped Area South of Subject Site: Prominent northwesterly winds are predicted to be channelled between the East and West Towers. As such, conditions over the landscaped area situated to the south of the subject site are predicted to be suitable for strolling or better during the typical use period, as illustrated in Figure 7. If the landscaped area is to accommodate outdoor amenity space, mitigation will be required to ensure conditions are suitable for sitting. This mitigation may include landscaping features such as wind screens, topographic depressions or berms, and/or coniferous plantings in dense arrangements.

Sidewalks and Building Access Along Kanata Avenue: Following the introduction of the proposed development, conditions over the sidewalk areas along Kanata Avenue are predicted to be suitable for a mix of sitting and standing during the summer, becoming suitable for walking or better during the remaining three seasons. Conditions in the vicinity of all building access points of the West Tower along Kanata Avenue are predicted to be suitable for sitting during the summer, becoming suitable for a mix of sitting and standing during the remaining three seasons. The noted conditions are considered acceptable according to the City of Ottawa wind comfort criteria in Section 4.4.

Conditions over the sidewalk areas along Kanata Avenue with the existing massing are predicted to be suitable for a mix of sitting and standing during the summer, becoming mostly suitable for standing during the autumn, and suitable for a mix of standing and strolling during the spring and winter. While the introduction of the proposed development results in windier conditions in comparison to existing conditions, wind comfort conditions are nevertheless considered acceptable.

Building Access along East of West Tower: Conditions in the vicinity of the building access points along the east elevation of the West Tower are predicted to be suitable for sitting during the summer, becoming suitable for standing, or better, during the remaining three seasons. The noted conditions are considered acceptable according to the City of Ottawa wind comfort criteria in Section 4.4.



Landscaped Area Northeast of West Tower: Conditions over the landscaped area to the northeast of the West Tower are predicted to be mostly suitable for standing during the typical use period, as illustrated in Figure 7. If the landscaped area is to accommodate outdoor amenity space, mitigation will be required to ensure conditions are suitable for sitting. This mitigation may include landscaping features such as wind screens, topographic depressions or berms, and/or coniferous plantings in dense arrangements.

Landscaped Area Northwest of East Tower: Conditions over the landscaped area to the northwest of the East Tower are predicted to be suitable for a mix of sitting and standing during the typical use period, as illustrated in Figure 7.

Depending on the programming of the space, the noted wind conditions may be considered acceptable. Specifically, if the southwest corner of the landscaped area is to accommodate seating or lounging spaces, mitigation will be required to ensure conditions are suitable for sitting. This mitigation may include landscaping features such as wind screens, topographic depressions or berms, and/or coniferous plantings in dense arrangements.

Central Walkways and Surface Parking: Conditions over the central walkways within the subject site are predicted to be suitable for a mix of sitting and standing during the summer, becoming suitable for a mix of standing and strolling during the remaining three seasons. Conditions over the surface parking to the south of the central drop-off area are predicted to be suitable for standing during the summer, becoming suitable for a mix of standing and strolling during the spring and autumn, and suitable for strolling during the winter. Conditions over the surface parking to the west of the central drop-off area are predicted to be suitable for a mix of sitting and standing during the summer, becoming suitable for standing during the autumn, and suitable for a mix of standing and strolling during the spring and winter. The noted conditions are considered acceptable according to the City of Ottawa wind comfort criteria in Section 4.4.

5.2 Wind Safety

Within the context of typical weather patterns, which exclude anomalous localized storm events such as tornadoes and downbursts, no pedestrian areas within or surrounding the subject site are expected to experience conditions that could be considered dangerous, as defined in Section 4.4.



5.3 Applicability of Results

Pedestrian wind comfort and safety have been quantified for the specific configuration of existing and foreseeable construction around the subject site. Future changes (i.e., construction or demolition) of these surroundings may cause changes to the wind effects in two ways, namely: (i) changes beyond the immediate vicinity of the subject site would alter the wind profile approaching the subject site; and (ii) development in proximity to the subject site would cause changes to local flow patterns.

Regarding primary and secondary building access points, wind conditions predicted in this study are only applicable to pedestrian comfort and safety. As such, the results should not be construed to indicate wind loading on doors and associated hardware.

6. CONCLUSIONS AND RECOMMENDATIONS

A complete summary of the predicted wind conditions is provided in Section 5 and illustrated in Figures 3A-7. Based on computer simulations using the CFD technique, meteorological data analysis of the Ottawa wind climate, City of Ottawa wind comfort and safety criteria, and experience with numerous similar developments, the study concludes the following:

- 1) While the introduction of the proposed building is predicted to generally increase the nearby wind levels, all grade-level areas within and surrounding the subject site are predicted to experience conditions that are considered acceptable for the intended pedestrian uses throughout the year. Specifically, conditions over surrounding sidewalks, walkways, surface parking, and in the vicinity of building access points, are considered acceptable. Exceptions are described as follows:
 - a. Conditions over the landscaped area situated to the south of the subject site are predicted to be suitable for strolling or better during the typical use period. Conditions over the landscape area to the northeast of the West Tower are predicted to be mostly suitable for standing during the same period. If these areas are to accommodate outdoor amenity space, mitigation will be required to ensure conditions are suitable for sitting.
 - b. Conditions over the landscape area to the northwest of the East Tower are predicted to be suitable for a mix of sitting and standing during the typical use period. Depending on the programming of the space, the noted wind conditions may be considered acceptable.



If the southwest corner of the area includes seating or lounging spaces, mitigation will be required to ensure conditions are suitable for sitting.

- c. If necessary, mitigation for the wind conditions noted above may include landscaping features such as wind screens, topographic depressions or berms, and/or coniferous plantings in dense arrangements.
- 2) The foregoing statements and conclusions apply to common weather systems, during which no dangerous wind conditions, as defined in Section 4.4, are expected anywhere over the subject site. During extreme weather events, (e.g., thunderstorms, tornadoes, and downbursts), pedestrian safety is the main concern. However, these events are generally short-lived and infrequent and there is often sufficient warning for pedestrians to take appropriate cover.

Sincerely,

Gradient Wind Engineering Inc.

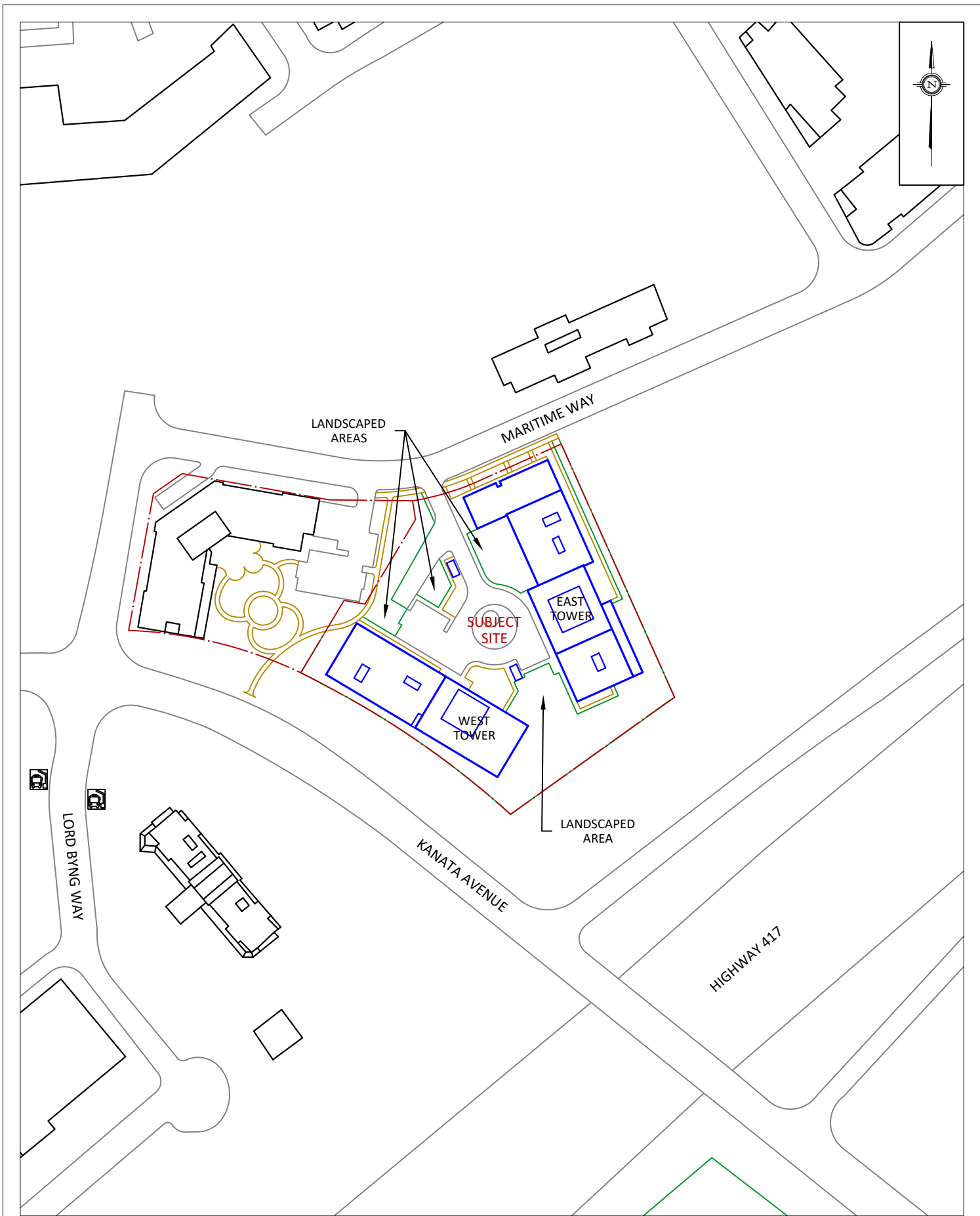


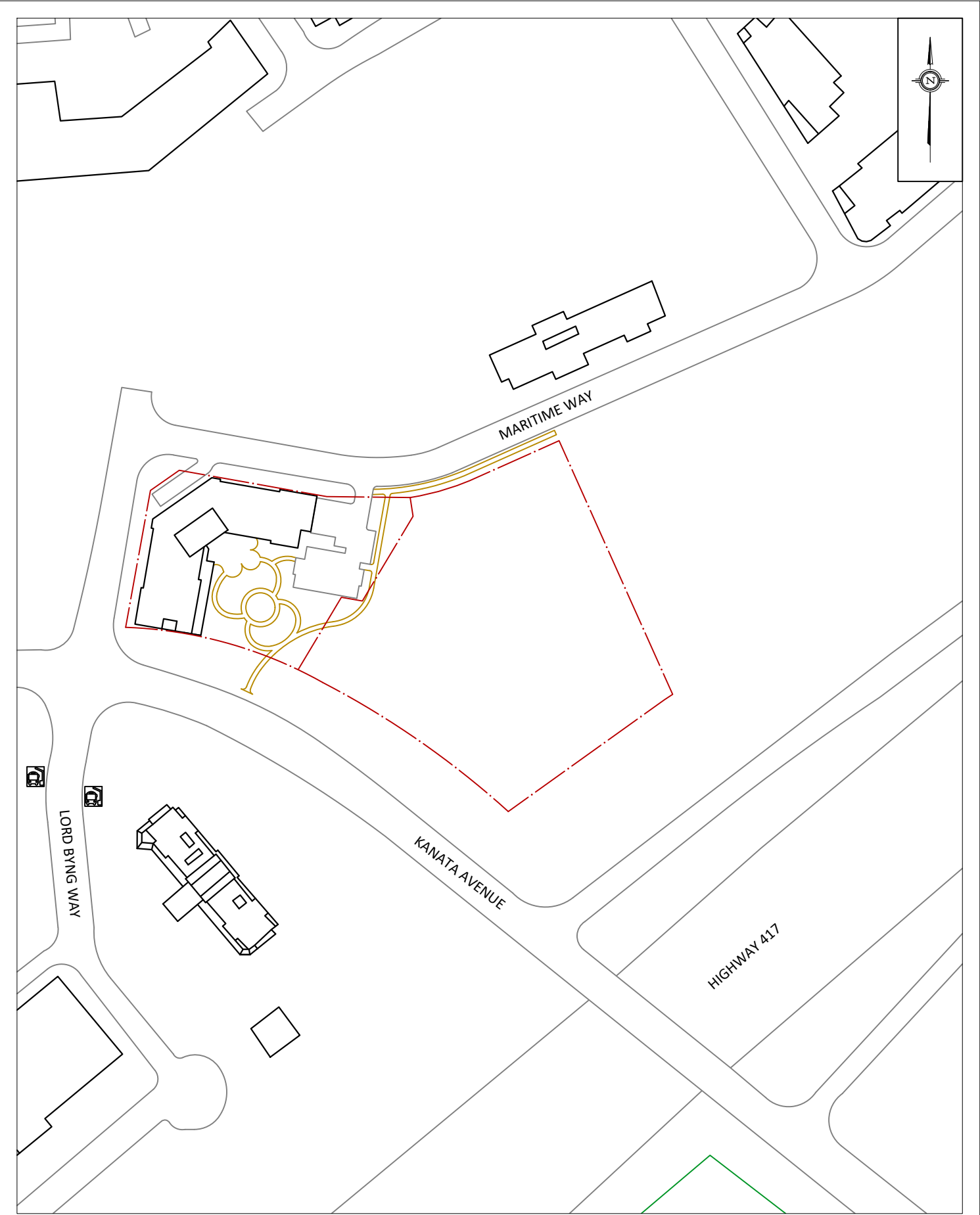
David Huitema, M.Eng.
Junior Wind Scientist



Steven Hall, M.A.Sc, P.Eng.
Senior Wind Engineer







GRADIENTWIND ENGINEERS & SCIENTISTS 127 WALGREEN ROAD, OTTAWA, ON 613 836 0934 • GRADIENTWIND.COM	PROJECT1200 MARITIME WAY, OTTAWA PEDESTRIAN LEVEL WIND STUDY		DESCRIPTION FIGURE 1B: EXISTING SITE PLAN AND SURROUNDING CONTEXT
	SCALE1:2000	DRAWING NO.20-207-PLW-2022-1B	
	DATEJULY 22, 2022	DRAWN BYS.K.	

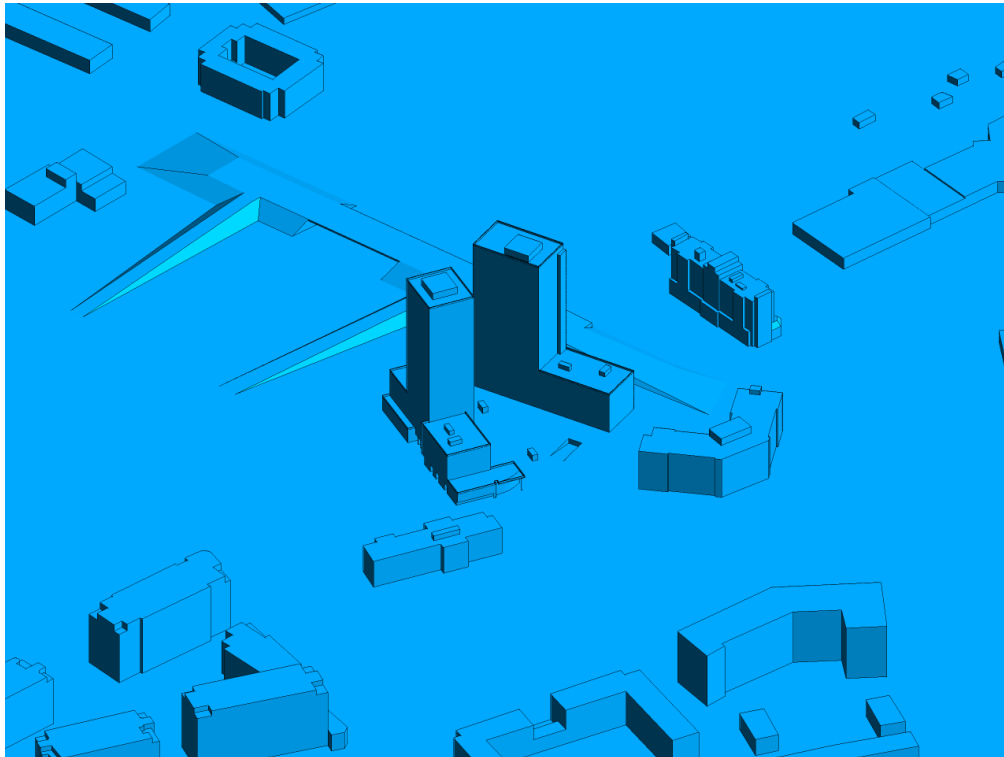


FIGURE 2A: COMPUTATIONAL MODEL, PROPOSED MASSING, NORTH PERSPECTIVE

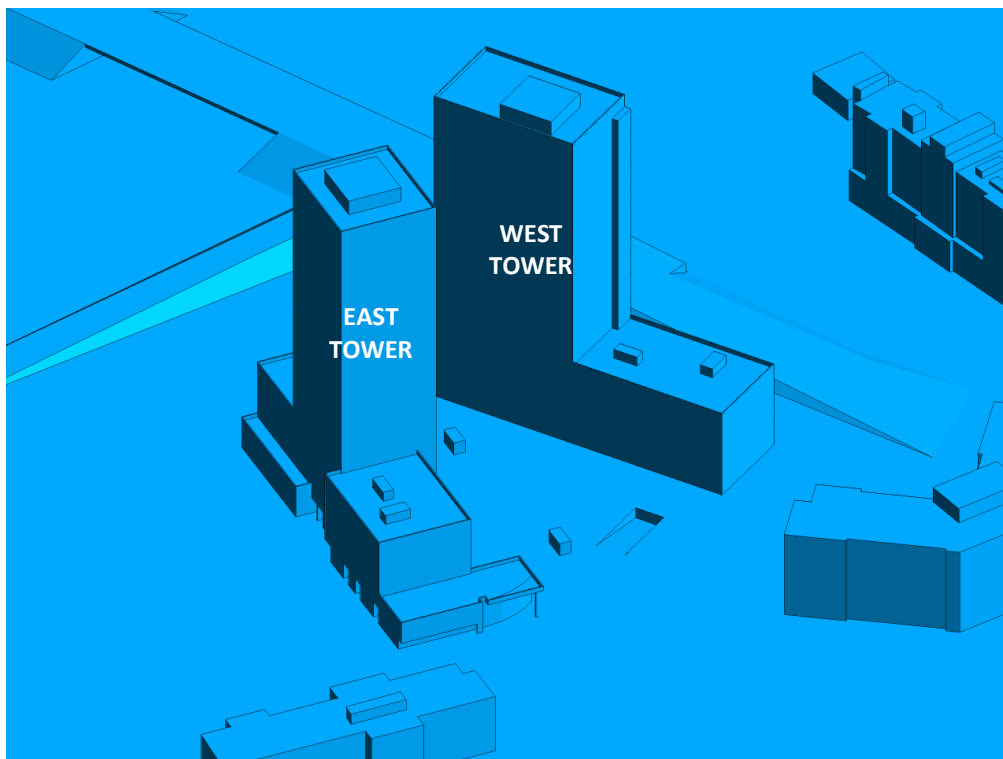


FIGURE 2B: CLOSE UP OF FIGURE 2A



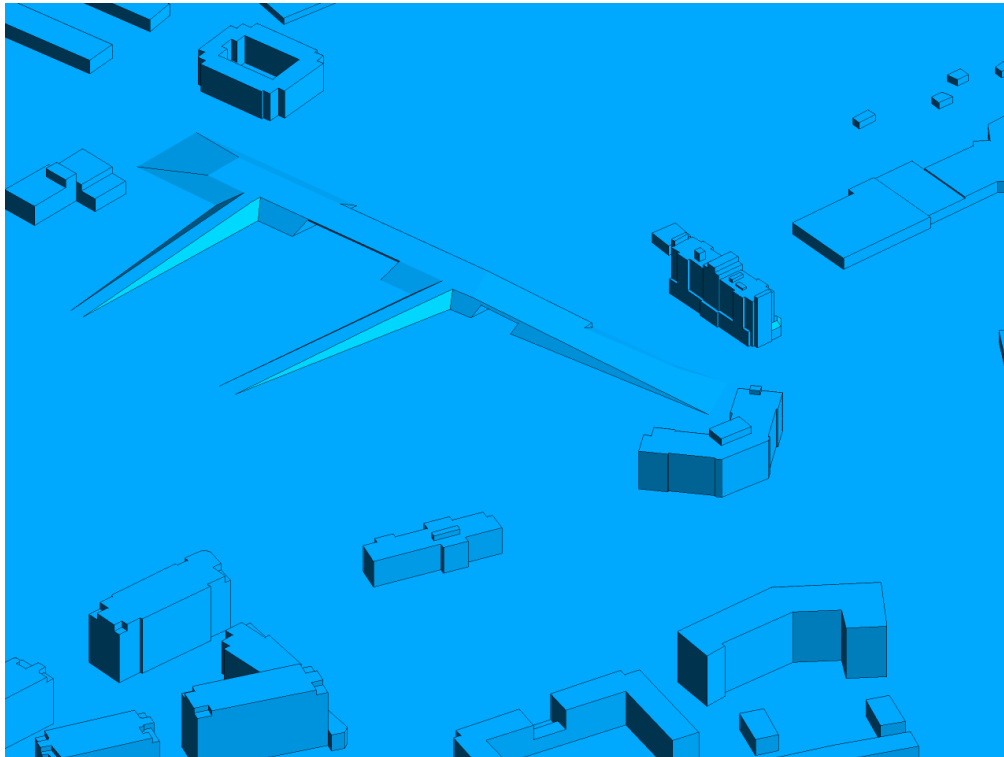


FIGURE 2C: COMPUTATIONAL MODEL, EXISTING MASSING, NORTH PERSPECTIVE

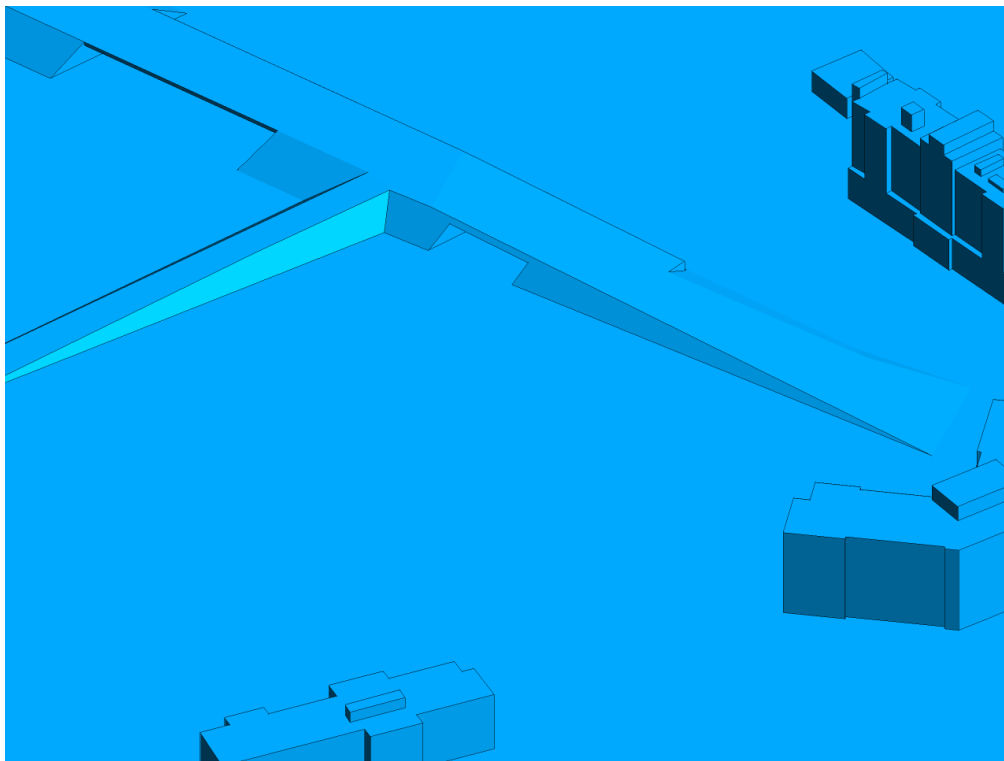


FIGURE 2D: CLOSE UP OF FIGURE 2C



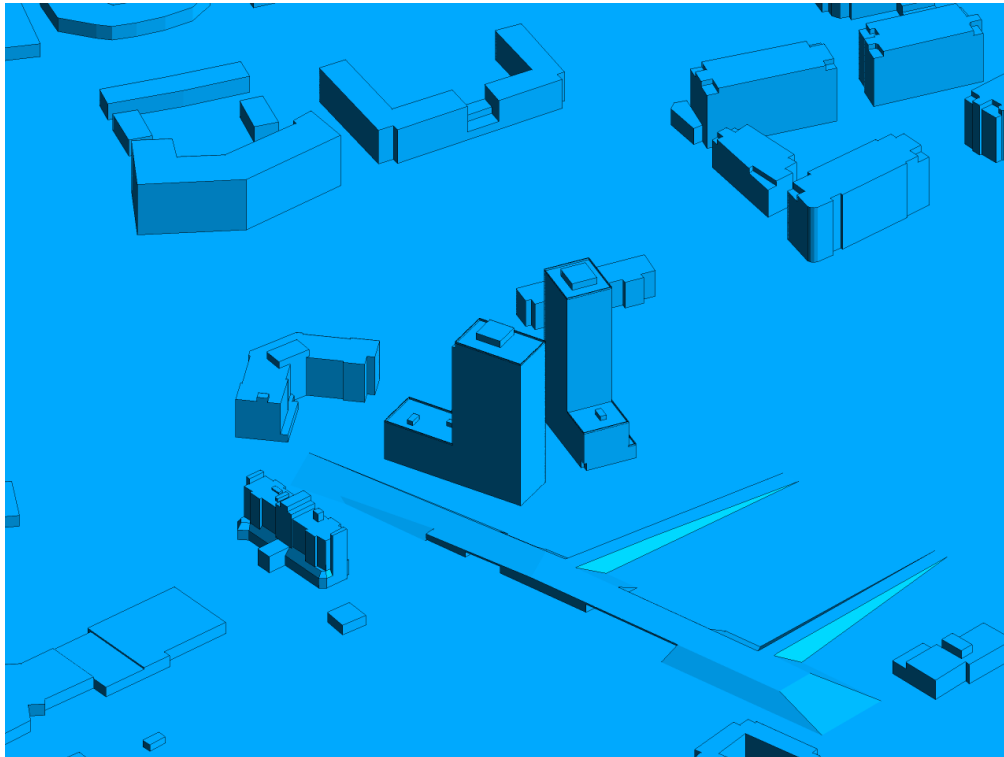


FIGURE 2E: COMPUTATIONAL MODEL, PROPOSED MASSING, SOUTH PERSPECTIVE

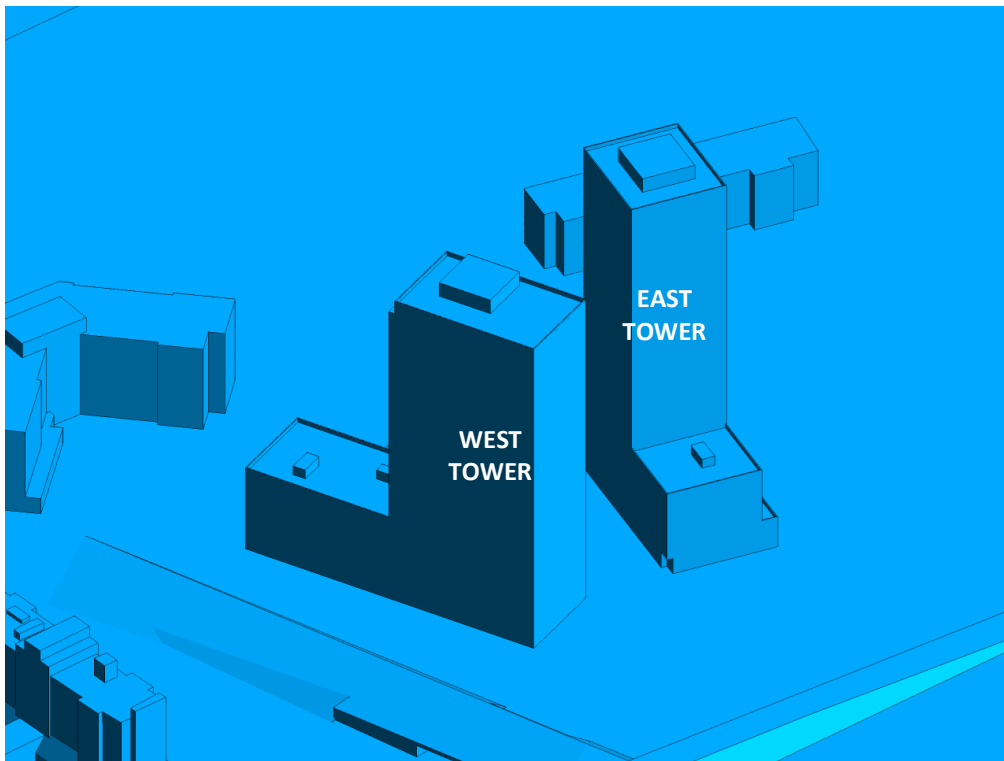


FIGURE 2F: CLOSE UP OF FIGURE 2E



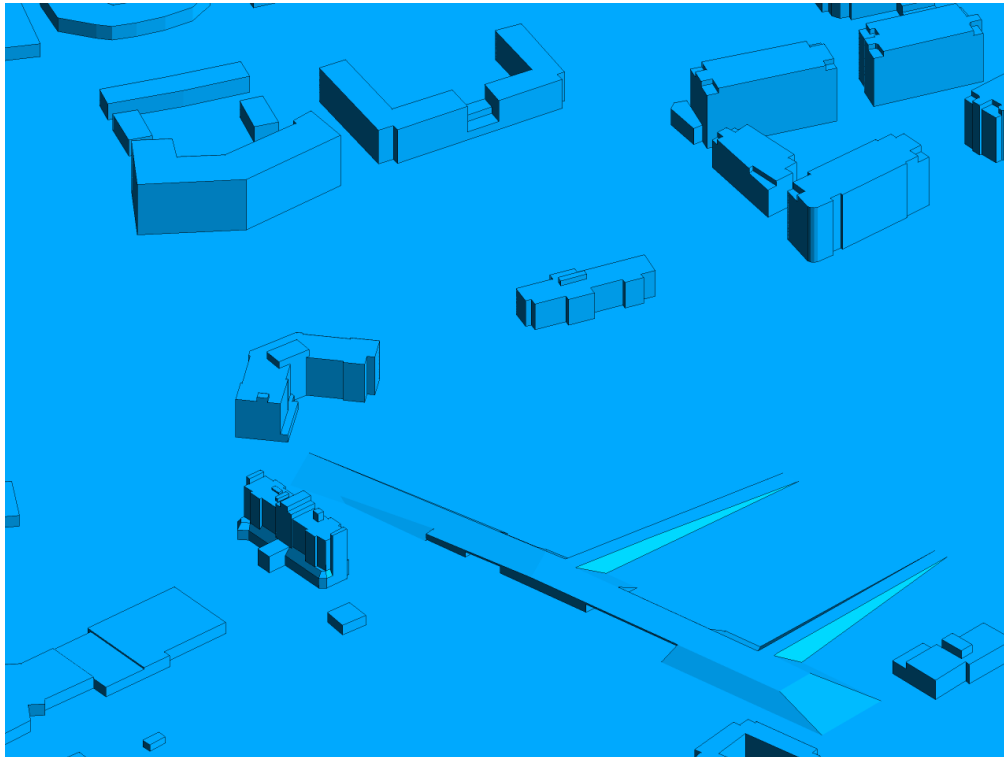


FIGURE 2G: COMPUTATIONAL MODEL, EXISTING MASSING, SOUTH PERSPECTIVE

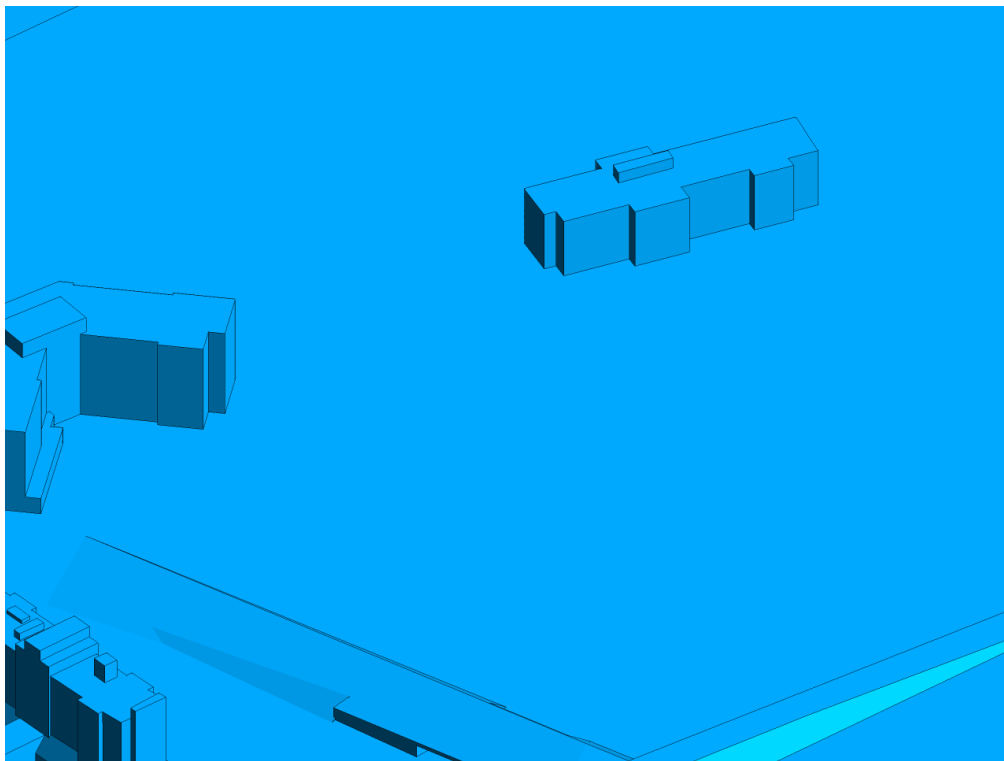


FIGURE 2H: CLOSE UP OF FIGURE 2G



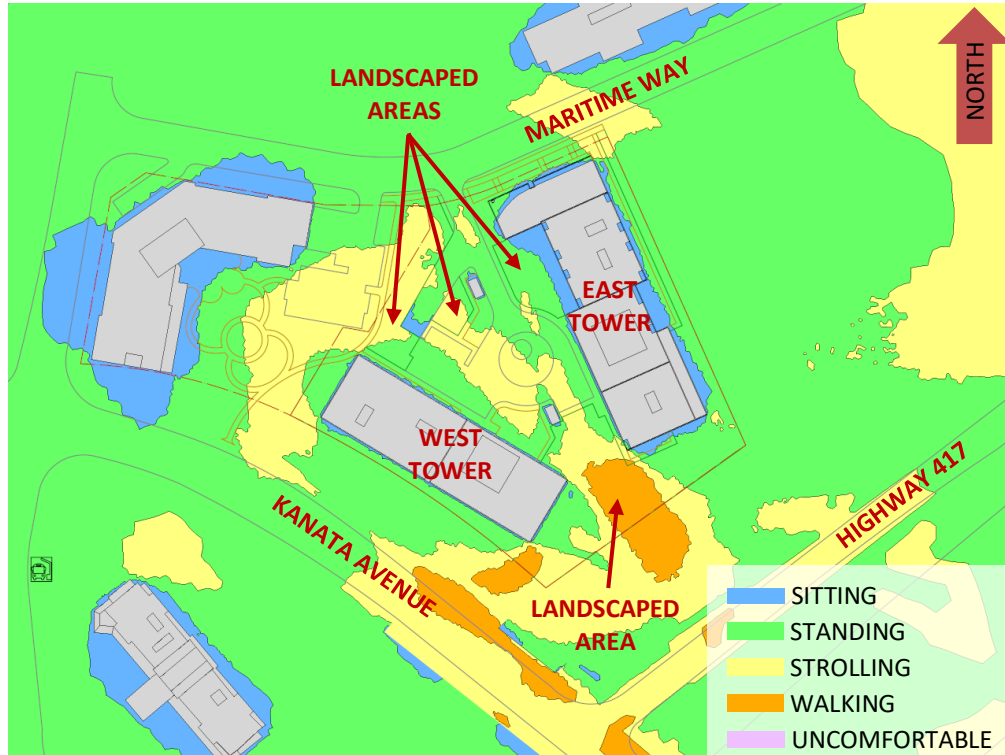


FIGURE 3A: SPRING – WIND COMFORT, GRADE LEVEL – PROPOSED MASSING

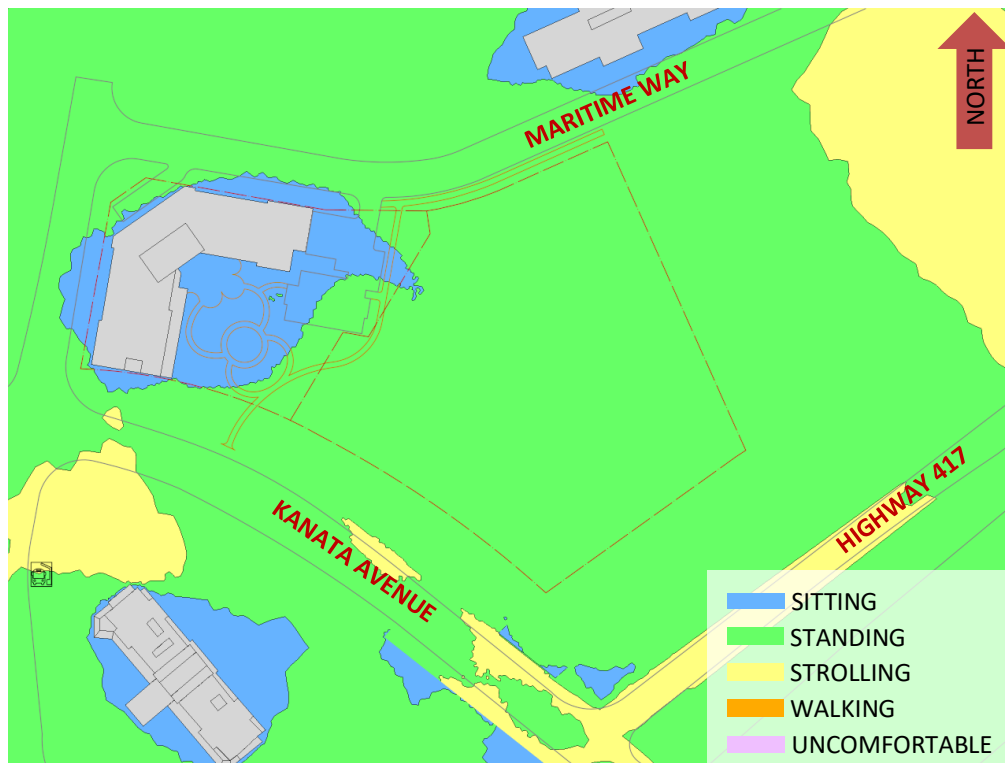


FIGURE 3B: SPRING – WIND COMFORT, GRADE LEVEL – EXISTING MASSING



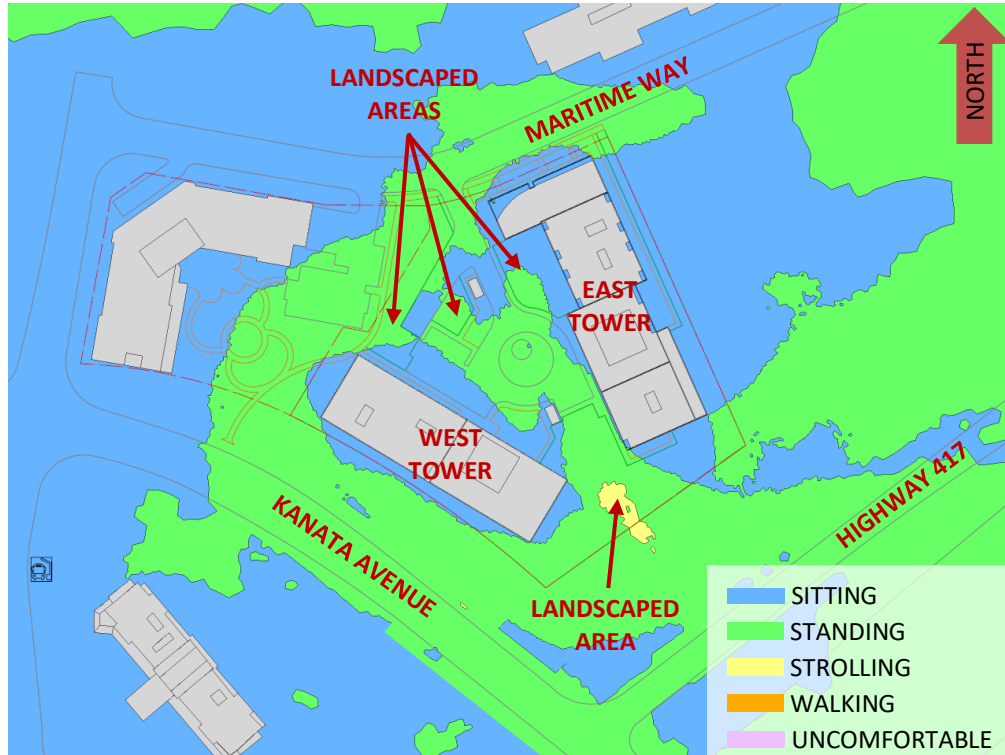


FIGURE 4A: SUMMER – WIND COMFORT, GRADE LEVEL – PROPOSED MASSING

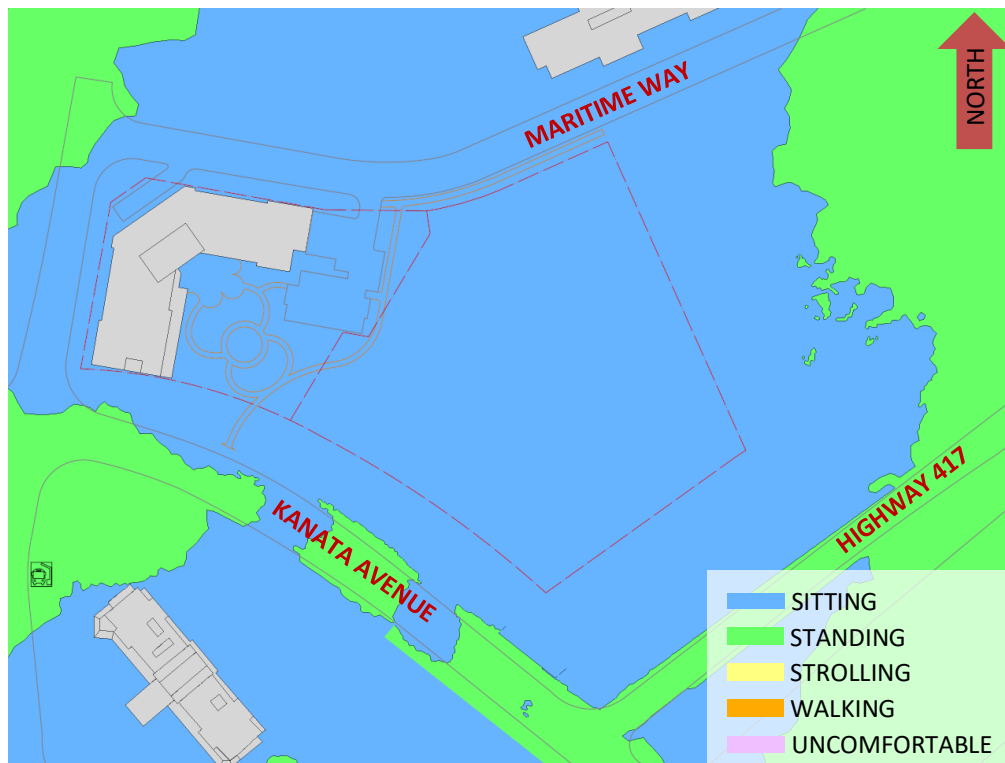


FIGURE 4B: SUMMER – WIND COMFORT, GRADE LEVEL – EXISTING MASSING



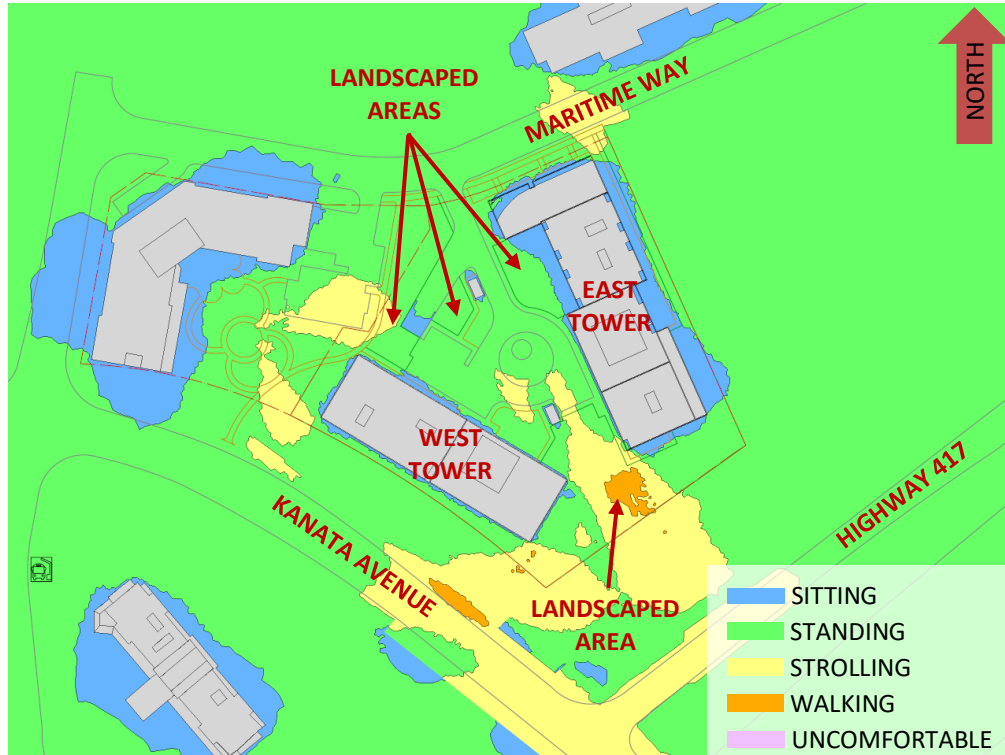


FIGURE 5A: AUTUMN – WIND COMFORT, GRADE LEVEL – PROPOSED MASSING

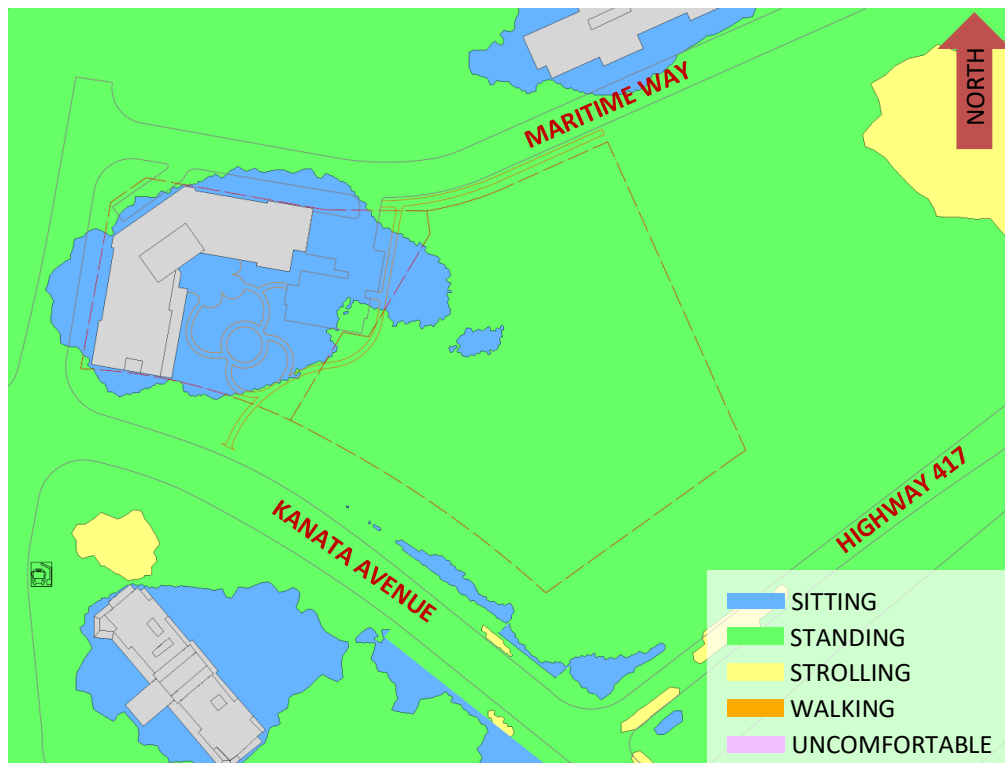


FIGURE 5B: AUTUMN – WIND COMFORT, GRADE LEVEL – EXISTING MASSING



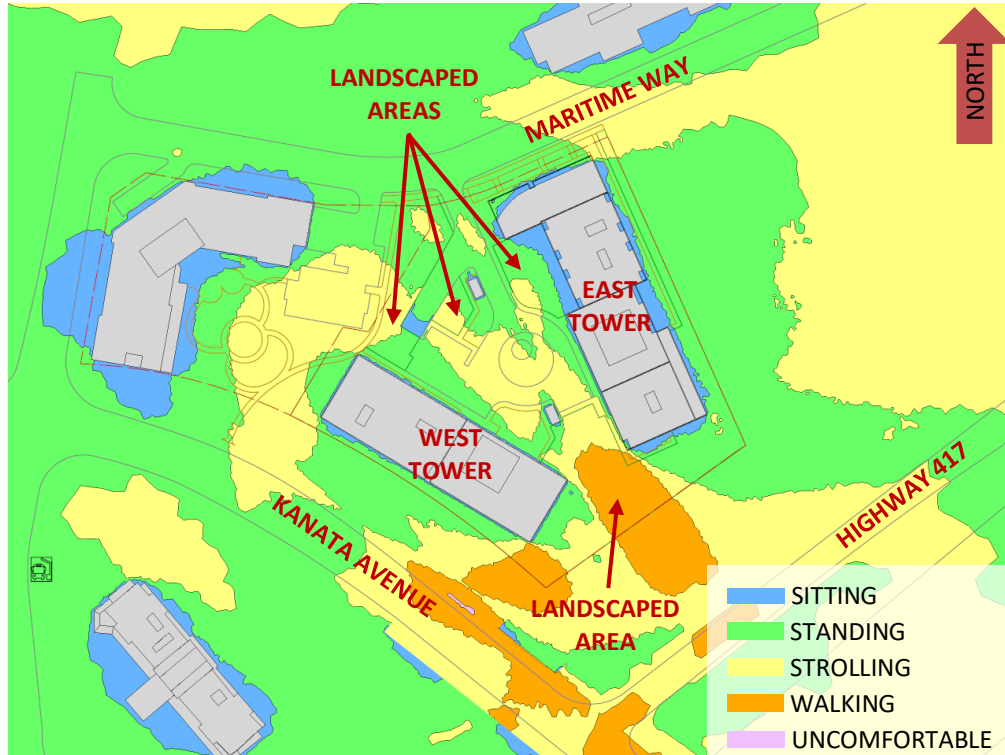


FIGURE 6A: WINTER – WIND COMFORT, GRADE LEVEL – PROPOSED MASSING

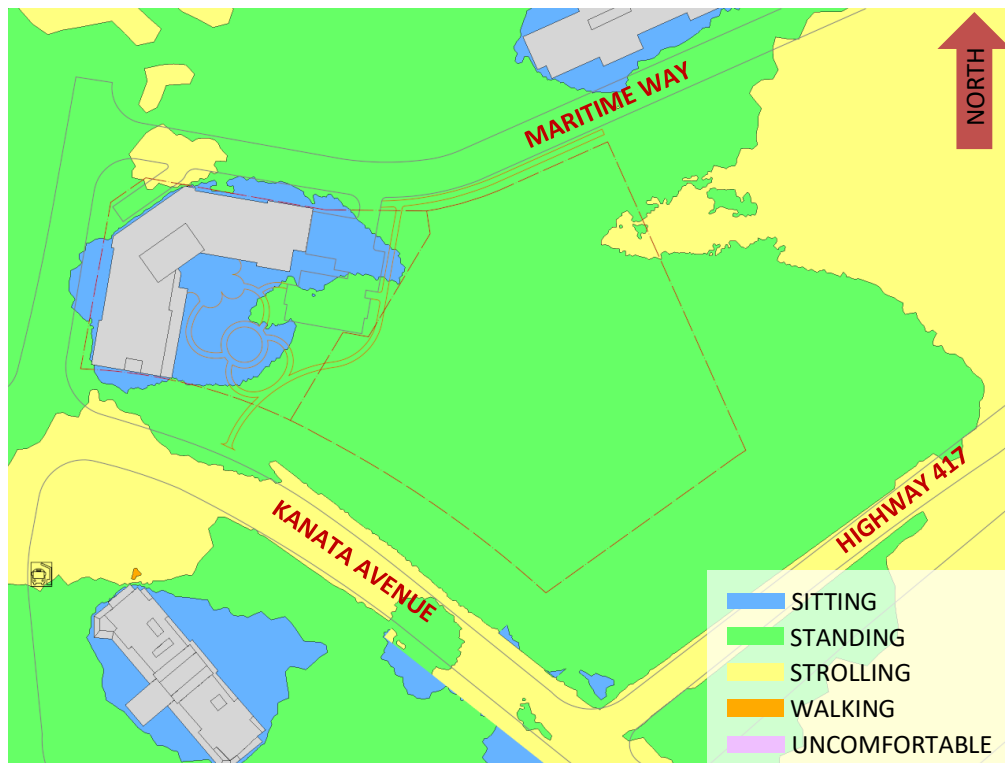


FIGURE 6B: WINTER – WIND COMFORT, GRADE LEVEL – EXISTING MASSING



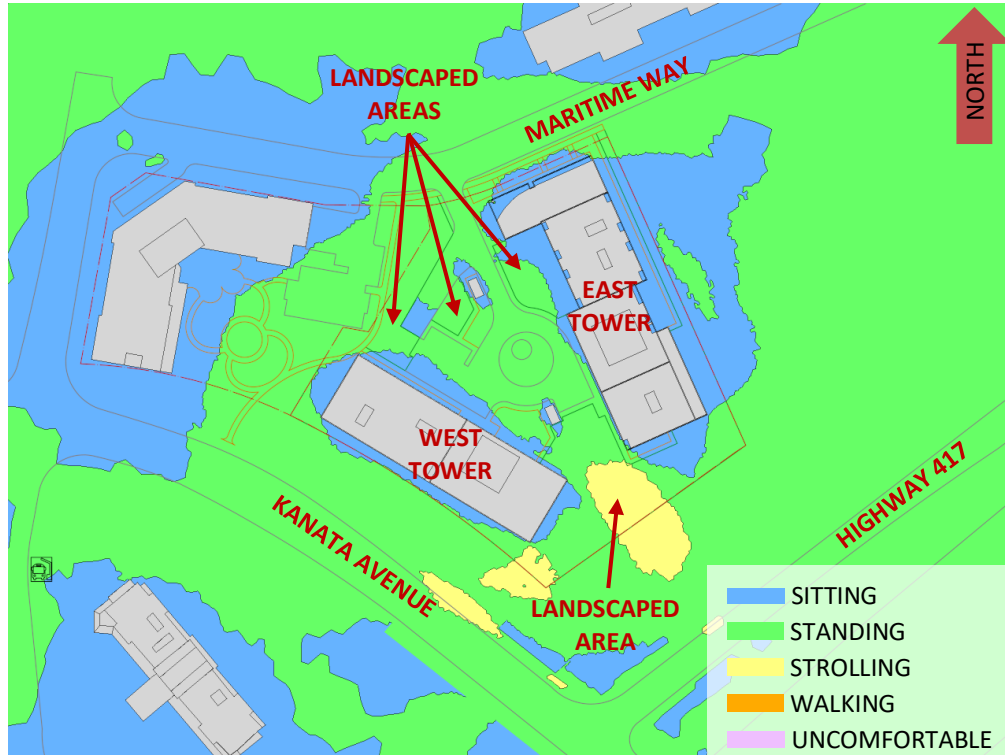
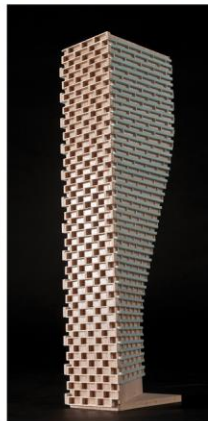


FIGURE 7: TYPICAL USE PERIOD – WIND COMFORT, GRADE LEVEL – PROPOSED MASSING



GRADIENTWIND

ENGINEERS & SCIENTISTS



APPENDIX A

SIMULATION OF THE ATMOSPHERIC BOUNDARY LAYER

SIMULATION OF THE ATMOSPHERIC BOUNDARY LAYER

The atmospheric boundary layer (ABL) is defined by the velocity and turbulence profiles according to industry standard practices. The mean wind profile can be represented, to a good approximation, by a power law relation, Equation (1), giving height above ground versus wind speed (1), (2).

$$U = U_g \left(\frac{Z}{Z_g} \right)^\alpha \quad \text{Equation (1)}$$

where, U = mean wind speed, U_g = gradient wind speed, Z = height above ground, Z_g = depth of the boundary layer (gradient height), and α is the power law exponent.

For the model, U_g is set to 6.5 metres per second (m/s), which approximately corresponds to the 60% mean wind speed for Ottawa based on historical climate data and statistical analyses. When the results are normalized by this velocity, they are relatively insensitive to the selection of gradient wind speed.

Z_g is set to 540 m. The selection of gradient height is relatively unimportant, so long as it exceeds the building heights surrounding the subject site. The value has been selected to correspond to our physical wind tunnel reference value.

α is determined based on the upstream exposure of the far-field surroundings (i.e., the area that it not captured within the simulation model).

Table 1 presents the values of α used in this study, while Table 2 presents several reference values of α . When the upstream exposure of the far-field surroundings is a mixture of multiple types of terrain, the α values are a weighted average with terrain that is closer to the subject site given greater weight.

TABLE 1: UPSTREAM EXPOSURE (ALPHA VALUE) VS TRUE WIND DIRECTION

Wind Direction (Degrees True)	Alpha Value (α)
0	0.23
49	0.22
74	0.22
103	0.23
167	0.24
197	0.24
217	0.23
237	0.23
262	0.22
282	0.22
301	0.22
324	0.23

TABLE 2: DEFINITION OF UPSTREAM EXPOSURE (ALPHA VALUE)

Upstream Exposure Type	Alpha Value (α)
Open Water	0.14-0.15
Open Field	0.16-0.19
Light Suburban	0.21-0.24
Heavy Suburban	0.24-0.27
Light Urban	0.28-0.30
Heavy Urban	0.31-0.33

The turbulence model in the computational fluid dynamics (CFD) simulations is a two-equation shear-stress transport (SST) model, and thus the ABL turbulence profile requires that two parameters be defined at the inlet of the domain. The turbulence profile is defined following the recommendations of the Architectural Institute of Japan for flat terrain (3).

$$I(Z) = \begin{cases} 0.1 \left(\frac{Z}{Z_g} \right)^{-\alpha-0.05}, & Z > 10 \text{ m} \\ 0.1 \left(\frac{10}{Z_g} \right)^{-\alpha-0.05}, & Z \leq 10 \text{ m} \end{cases} \quad \text{Equation (2)}$$

$$L_t(Z) = \begin{cases} 100 \text{ m} \sqrt{\frac{Z}{30}}, & Z > 30 \text{ m} \\ 100 \text{ m}, & Z \leq 30 \text{ m} \end{cases} \quad \text{Equation (3)}$$

where, I = turbulence intensity, L_t = turbulence length scale, Z = height above ground, and α is the power law exponent used for the velocity profile in Equation (1).

Boundary conditions on all other domain boundaries are defined as follows: the ground is a no-slip surface; the side walls of the domain have a symmetry boundary condition; the top of the domain has a specified shear, which maintains a constant wind speed at gradient height; and the outlet has a static pressure boundary condition.

REFERENCES

- [1] P. Arya, "Chapter 10: Near-neutral Boundary Layers," in *Introduction to Micrometeorology*, San Diego, California, Academic Press, 2001.
- [2] S. A. Hsu, E. A. Meindl and D. B. Gilhousen, "Determining the Power-Law Wind Profile Exponent under Near-neutral Stability Conditions at Sea," vol. 33, no. 6, 1994.
- [3] Y. Tamura, H. Kawai, Y. Uematsu, K. Kondo and T. Okhuma, "Revision of AIJ Recommendations for Wind Loads on Buildings," in *The International Wind Engineering Symposium, IWES 2003*, Taiwan, 2003.