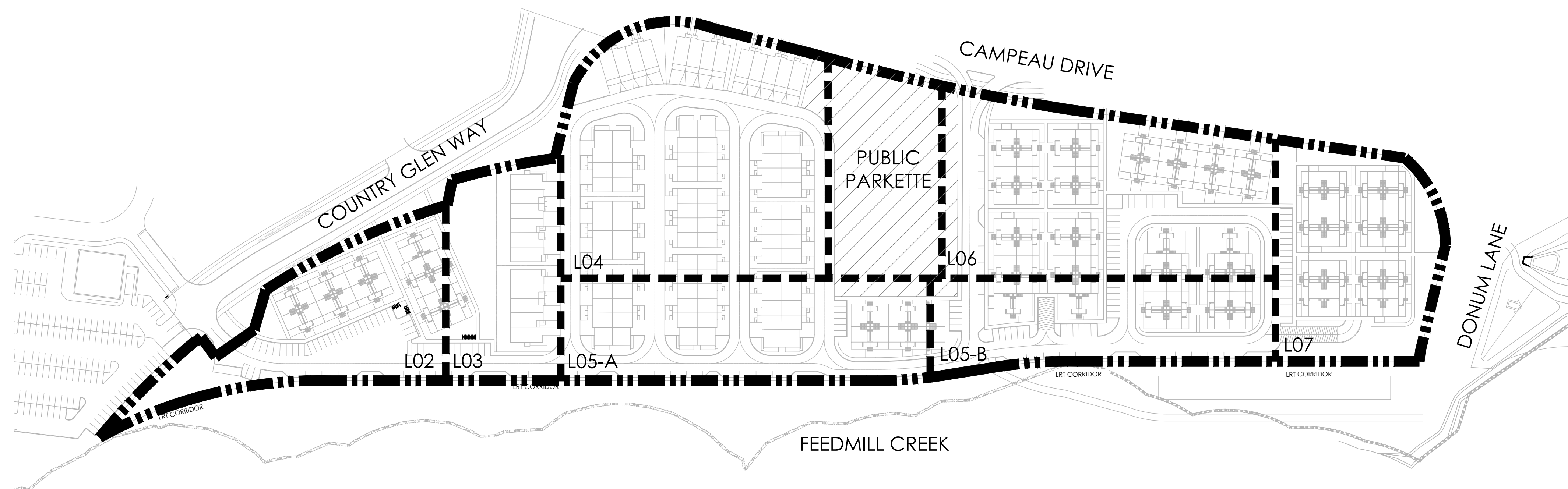




# MINTO COMMUNITIES ARCADIA STAGE 6

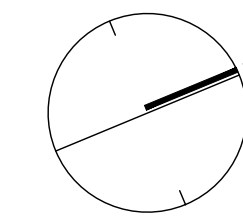


### LIST OF DRAWINGS:

- L1 - LANDSCAPE PLAN
- L2 - LANDSCAPE PLAN
- L3 - LANDSCAPE PLAN - AMENITY AREA
- L4 - LANDSCAPE PLAN
- L5 - LANDSCAPE PLAN
- L6 - LANDSCAPE PLAN
- L7 - LANDSCAPE PLAN
- D1 - DETAILS
- D2 - CROSS SECTIONS

### TREE PLANTING IN MARINE CLAY SOILS

1. THIS LANDSCAPE PLAN CONFORMS WITH THE TREE-TO-FOUNDATION SETBACK, SOIL VOLUME, AND SURFACE-GRADING REQUIREMENTS OUTLINED IN THE CITY OF OTTAWA'S GUIDELINES FOR TREE PLANTING IN SENSITIVE MARINE CLAY SOILS (2017), BASED ON THE FINDINGS OUTLINED IN THE PROJECT GEOTECHNICAL REPORT.
2. ADDITIONAL REQUIREMENTS OUTLINED IN THE CITY OF OTTAWA'S GUIDELINES FOR TREE PLANTING IN SENSITIVE MARINE CLAY SOILS (2017), INCLUDING USF DEPTH, FOUNDATION WALL REINFORCEMENT, AND SUBDIVISION GRADING, SHOULD BE CONFIRMED BY THE PROJECT ENGINEERS.
3. THE CONTRACTOR SHOULD REPORT ANY DISCREPANCIES TO THE CONTRACT ADMINISTRATOR BEFORE PLANTING TREES.
4. CITY OF OTTAWA - GUIDELINES FOR TREE PLANTING IN SENSITIVE MARINE CLAY SOILS (2017): THE FOLLOWING GUIDELINES ARE PRIMARILY FOCUSED ON SMALL AND MEDIUM SIZE STREET TREES; HOWEVER, LARGE TREES (MATURE HEIGHT OVER 14M) CAN STILL BE PLANTED IN AREAS OF SMC SOILS PROVIDED A TREE TO FOUNDATION SETBACK EQUAL TO THE FULL MATURE HEIGHT OF THE TREE CAN BE PROVIDED (E.G. IN A PARK OR OTHER GREEN SPACE). FOR STREET TREES IN THE ROAD RIGHT-OF-WAY WHERE SMC SOILS HAVE BEEN IDENTIFIED, THE TREE TO FOUNDATION SETBACKS MAY BE REDUCED TO 4.5M FOR SMALL (MATURE TREE HEIGHT UP TO 7.5M) AND MEDIUM SIZE TREES (MATURE TREE HEIGHT 7.5M-14M) PROVIDED ALL OF THE FOLLOWING SIX CONDITIONS ARE MET:
  1. THE MODIFIED PLASTICITY INDEX OF THE SOIL BETWEEN THE UNDERSIDE OF FOOTING (USF) AND A DEPTH OF 3.5M GENERALLY DOES NOT EXCEED 40%. THIS CORRESPONDS TO SOILS WITH LOW/MEDIUM POTENTIAL FOR SOIL VOLUME CHANGE. CLAY SOILS THAT EXCEED THE 40% PLASTICITY INDEX ARE CONSIDERED TO HAVE HIGH POTENTIAL FOR SOIL VOLUME CHANGE. FOR THESE WORST-CASE SOILS, THE SETBACKS AND TREE PLANTING RESTRICTIONS REMAIN UNCHANGED FROM THE 2005 CLAY SOILS POLICY (TREE SETBACK MUST EQUAL THE MATURE HEIGHT OF THE TREE - I.E. 7.5M SETBACK FOR SMALL TREES).
  2. THE USF IS 2.1M OR GREATER BELOW THE LOWEST FINISHED GRADE. NOTE: THIS FOOTING LEVEL MUST BE SATISFIED FOR FOOTINGS WITHIN 10M OF THE TREE, AS MEASURED FROM THE CENTRE OF THE TREE TRUNK, AND VERIFIED BY MEANS OF THE GRADING PLAN AS INDICATED IN THE PROCEDURAL CHANGES BELOW.
  3. A SMALL SIZE TREE MUST BE PROVIDED WITH A MINIMUM OF 25M<sup>3</sup> OF AVAILABLE SOIL VOLUME, AS DETERMINED BY A LANDSCAPE ARCHITECT. A MEDIUM SIZE TREE MUST BE PROVIDED WITH A MINIMUM OF 30M<sup>3</sup> OF AVAILABLE SOIL VOLUME, AS DETERMINED BY A LANDSCAPE ARCHITECT. THE DEVELOPER WILL ENSURE THE SOIL IS GENERALLY UNCOMPACTED WHEN BACKFILLING IN STREET TREE PLANTING LOCATIONS.
    - NOTE: THE SOIL VOLUME CALCULATION MUST BE BASED ON A DEPTH OF 1.5M BELOW FINISHED GRADE (E.G. 5M LENGTH X 4M WIDTH AT SURFACE X 1.5M DEPTH = 30M<sup>3</sup>). IT MAY INCLUDE LANDS IN THE RIGHT-OF-WAY AND ON PRIVATE PROPERTY, BUT MUST SUBTRACT THE VOLUME OF SHALLOW UTILITY TRENCHES (I.E. VOLUME OF SHALLOW UTILITY TRENCHES CANNOT COUNT TOWARDS MINIMUM SOIL VOLUME).
  4. THE TREE SPECIES MUST BE SMALL TO MEDIUM SIZE, AS CONFIRMED BY A LANDSCAPE ARCHITECT IN THE LANDSCAPE PLAN.
  5. THE FOUNDATION WALLS ARE TO BE REINFORCED AT LEAST NOMINALLY (MINIMUM OF TWO UPPER AND TWO LOWER 15M BARS IN THE FOUNDATION WALL) TO PROVIDE DUCTILITY AS DESCRIBED IN THE GEOTECHNICAL REPORT.
  6. GRADING SURROUNDING THE TREE MUST PROMOTE DRAINING TO THE TREE ROOT ZONE (IN SUCH A MANNER AS NOT TO BE DETRIMENTAL TO THE TREE), AS NOTED ON THE SUBDIVISION GRADING PLAN.

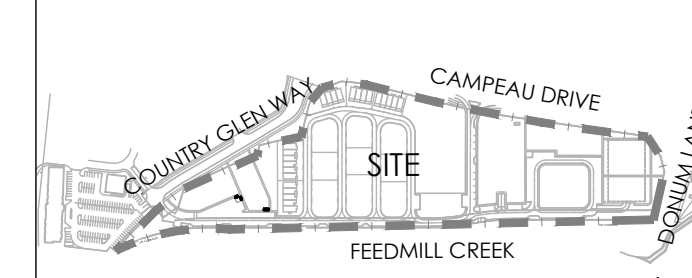


KEYMAP  
NTS

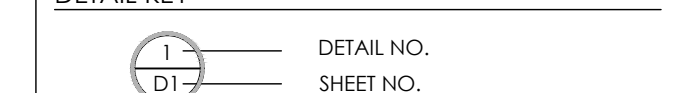
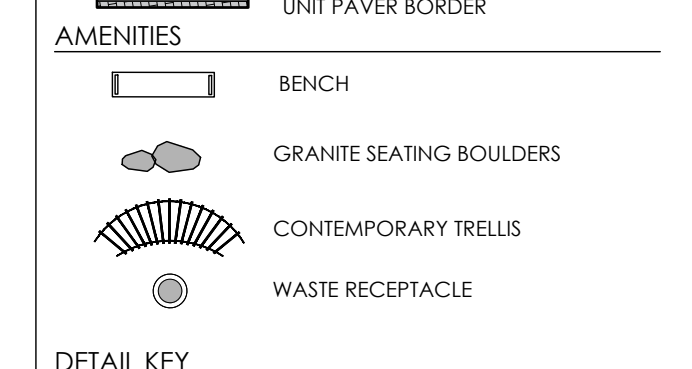
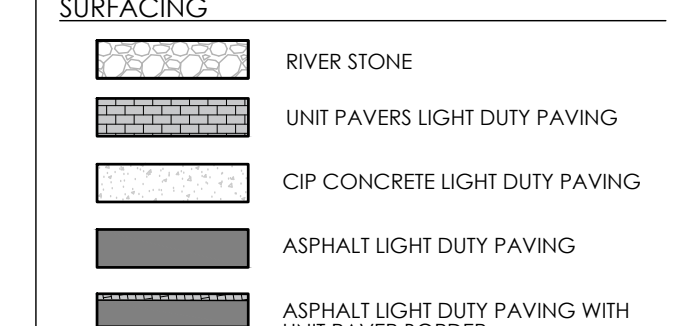
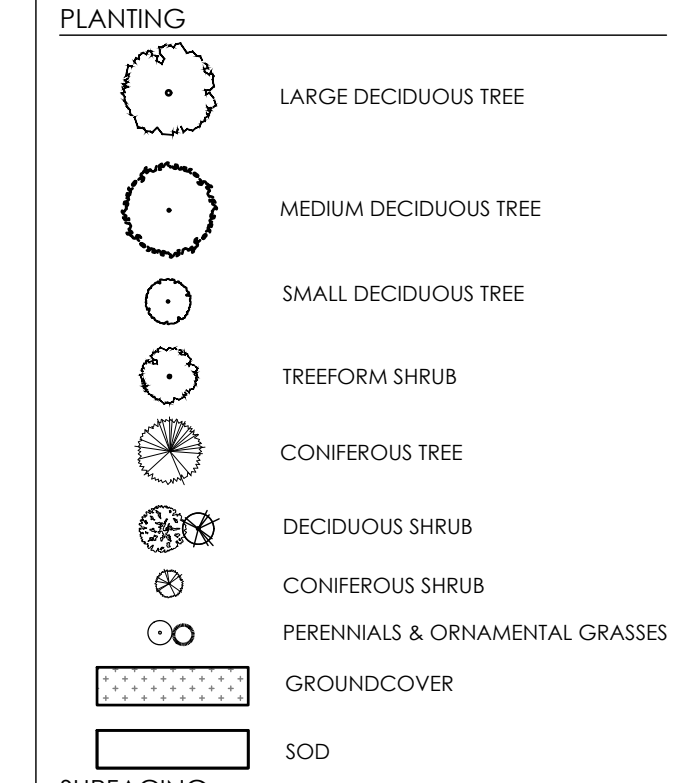
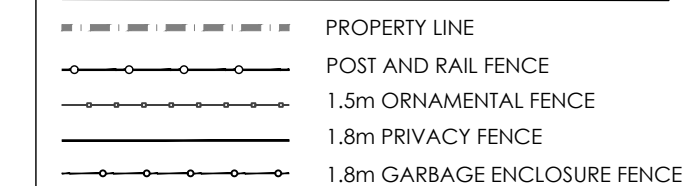


Contractor shall check all dimensions on the work and report any discrepancy to the Landscape Architect before proceeding. All drawings and specifications are the property of the Landscape Architect and must be returned at the completion of the work. This drawing is not to be used for construction until signed by the Landscape Architect.

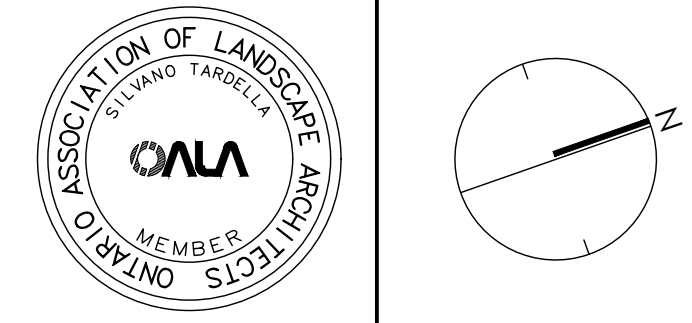
Key Plan



LEGEND



1	DETAIL NO.	
D1	SHEET NO.	
-		
-		
-		
-		
-		
-		
2	Issued for First Submission	July 15/22
1	Issued for client review	July 8/22
No.	Description	Date
Revision		
City Approval Stamp		



**NAK**  
design strategies

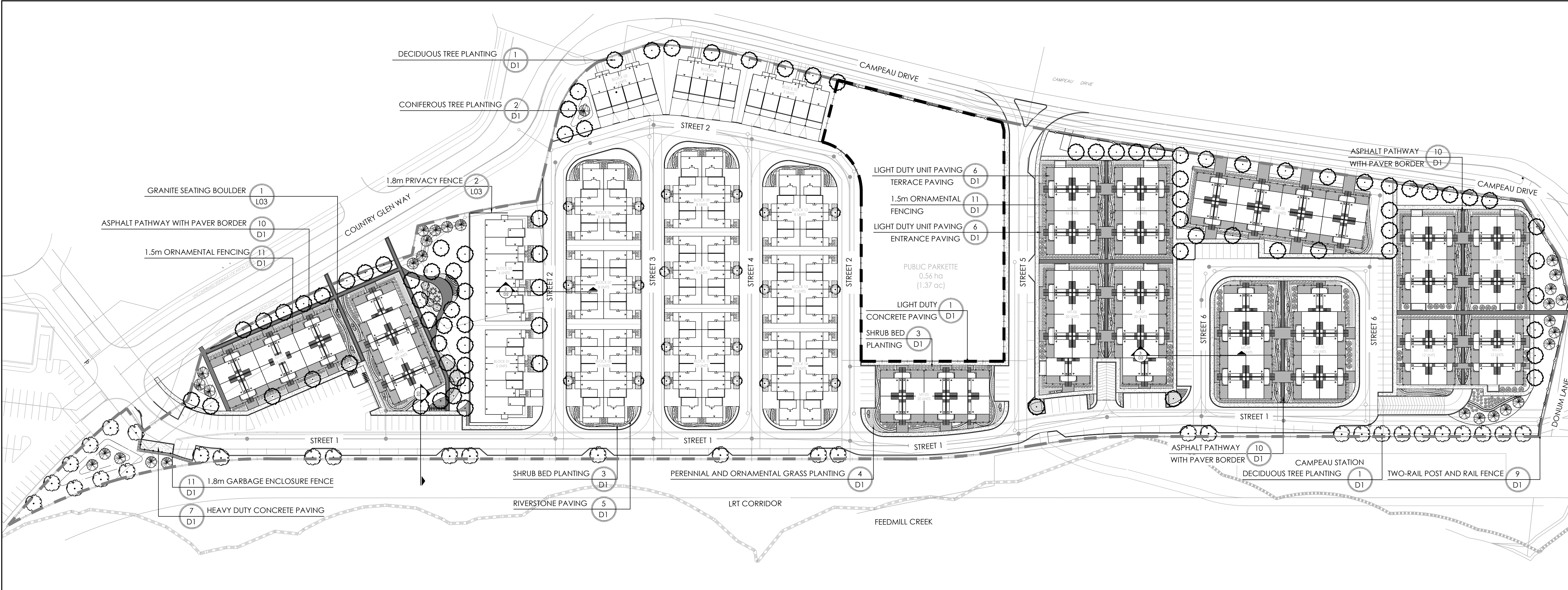
1285 WELLINGTON STREET, OTTAWA, ON K1T 3A8 CANADA  
T 613.237.2345 F 613.237.6423 NAKDESIGNSTRATEGIES.COM

MINTO COMMUNITIES  
ARCADIA  
STAGE 6

Title  
LANDSCAPE PLAN

Date JULY 2022  
Scale 1:750  
Drawn SH  
Checked MK  
Job No. 21-089

Sheet  
L01



TREE PLANTING IN MARINE CLAY SOILS

- THIS LANDSCAPE PLAN CONFORMS WITH THE TREE-TO-FOUNDATION SETBACK, SOIL VOLUME, AND SURFACE-GRADING REQUIREMENTS OUTLINED IN THE CITY OF OTTAWA'S GUIDELINES FOR TREE PLANTING IN SENSITIVE MARINE CLAY SOILS (2017), BASED ON THE FINDINGS OUTLINED IN THE PROJECT GEOTECHNICAL REPORT.
- ADDITIONAL REQUIREMENTS OUTLINED IN THE CITY OF OTTAWA'S GUIDELINES FOR TREE PLANTING IN SENSITIVE MARINE CLAY SOILS (2017), INCLUDING USF DEPTH, FOUNDATION WALL REINFORCEMENT, AND SUBDIVISION GRADING, SHOULD BE CONFIRMED BY THE PROJECT ENGINEER(S).
- THE CONTRACTOR SHOULD REPORT ANY DISCREPANCIES TO THE CONTRACT ADMINISTRATOR BEFORE PLANTING TREES.
- CITY OF OTTAWA: GUIDELINES FOR TREE PLANTING IN SENSITIVE MARINE CLAY SOILS (2017): THE FOLLOWING GUIDELINES ARE PRIMARILY FOCUSED ON SMALL AND MEDIUM SIZE STREET TREES. HOWEVER, LARGE TREES (MATURE HEIGHT OVER 14M) CAN STILL BE PLANTED IN AREAS OF SMC SOILS PROVIDED A TREE TO FOUNDATION SETBACK EQUAL TO THE FULL MATURE HEIGHT OF THE TREE CAN BE PROVIDED (E.G. IN A PARK OR OTHER GREEN SPACE). FOR STREET TREES IN THE ROAD RIGHT-OF-WAY WHERE SMC SOILS HAVE BEEN IDENTIFIED, THE TREE TO FOUNDATION SETBACKS MAY BE REDUCED TO 4.5M FOR SMALL (MATURE TREE HEIGHT UP TO 7.5M) AND MEDIUM SIZE TREES (MATURE TREE HEIGHT 7.5M-14M) PROVIDED ALL OF THE FOLLOWING SIX CONDITIONS ARE MET:

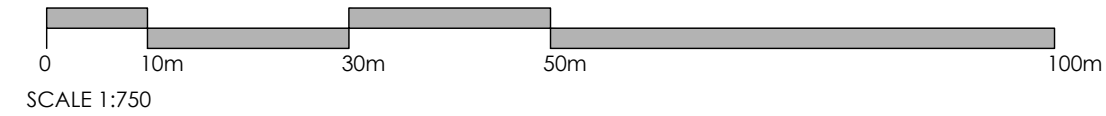
- THE MODIFIED PLASTICITY INDEX OF THE SOIL BETWEEN THE UNDERSIDE OF FOOTING (USF) AND A DEPTH OF 3.5M GENERALLY DOES NOT EXCEED 40%. THIS CORRESPONDS TO SOILS WITH LOW/MEDIUM POTENTIAL FOR SOIL VOLUME CHANGE. CLAY SOILS THAT EXCEED THE 40% PLASTICITY INDEX ARE CONSIDERED TO HAVE HIGH POTENTIAL FOR SOIL VOLUME CHANGE. FOR THESE WORST-CASE SOILS, THE SETBACKS AND TREE PLANTING RESTRICTIONS REMAIN UNCHANGED FROM THE 2005 CLAY SOILS POLICY (TREE SETBACK MUST EQUAL THE MATURE HEIGHT OF THE TREE - I.E. 7.5M SETBACK FOR SMALL TREES).
- THE USF IS 2.1M OR GREATER BELOW THE LOWEST FINISHED GRADE. NOTE: THIS FOOTING LEVEL MUST BE SATISFIED FOR FOOTINGS WITHIN 10M OF THE TREE, AS MEASURED FROM THE CENTRE OF THE TREE TRUNK, AND VERIFIED BY MEANS OF THE GRADING PLAN AS INDICATED IN THE PROCEDURAL CHANGES BELOW.
- A SMALL SIZE TREE MUST BE PROVIDED WITH A MINIMUM OF 25M3 OF AVAILABLE SOIL VOLUME, AS DETERMINED BY A LANDSCAPE ARCHITECT. A MEDIUM SIZE TREE MUST BE PROVIDED WITH A MINIMUM OF 30M3 OF AVAILABLE SOIL VOLUME, AS DETERMINED BY A LANDSCAPE ARCHITECT. THE DEVELOPER WILL ENSURE THE SOIL IS GENERALLY UNCOMPACTED WHEN BACKFILLING IN STREET TREE PLANTING LOCATIONS.  
NOTE: THE SOIL VOLUME CALCULATION MUST BE BASED ON A DEPTH OF 1.5M BELOW FINISHED GRADE (E.G. 5M LENGTH X 4M WIDTH AT SURFACE X 1.5M DEPTH = 30M3). IT MAY INCLUDE LANDS IN THE RIGHT-OF-WAY AND ON PRIVATE PROPERTY, BUT MUST SUBTRACT THE VOLUME OF SHALLOW UTILITY TRENCHES (I.E. VOLUME OF SHALLOW UTILITY TRENCHES CANNOT COUNT TOWARDS MINIMUM SOIL VOLUME).
- THE TREE SPECIES MUST BE SMALL TO MEDIUM SIZE, AS CONFIRMED BY A LANDSCAPE ARCHITECT IN THE LANDSCAPE PLAN.
- THE FOUNDATION WALLS ARE TO BE REINFORCED AT LEAST NOMINALLY (MINIMUM OF TWO UPPER AND TWO LOWER 15M BARS IN THE FOUNDATION WALL) TO PROVIDE DUCTILITY AS DESCRIBED IN THE GEOTECHNICAL REPORT.
- GRADING SURROUNDING THE TREE MUST PROMOTE DRAINAGE TO THE TREE ROOT ZONE (IN SUCH A MANNER AS NOT TO BE DETRIMENTAL TO THE TREE), AS NOTED ON THE SUBDIVISION GRADING PLAN.

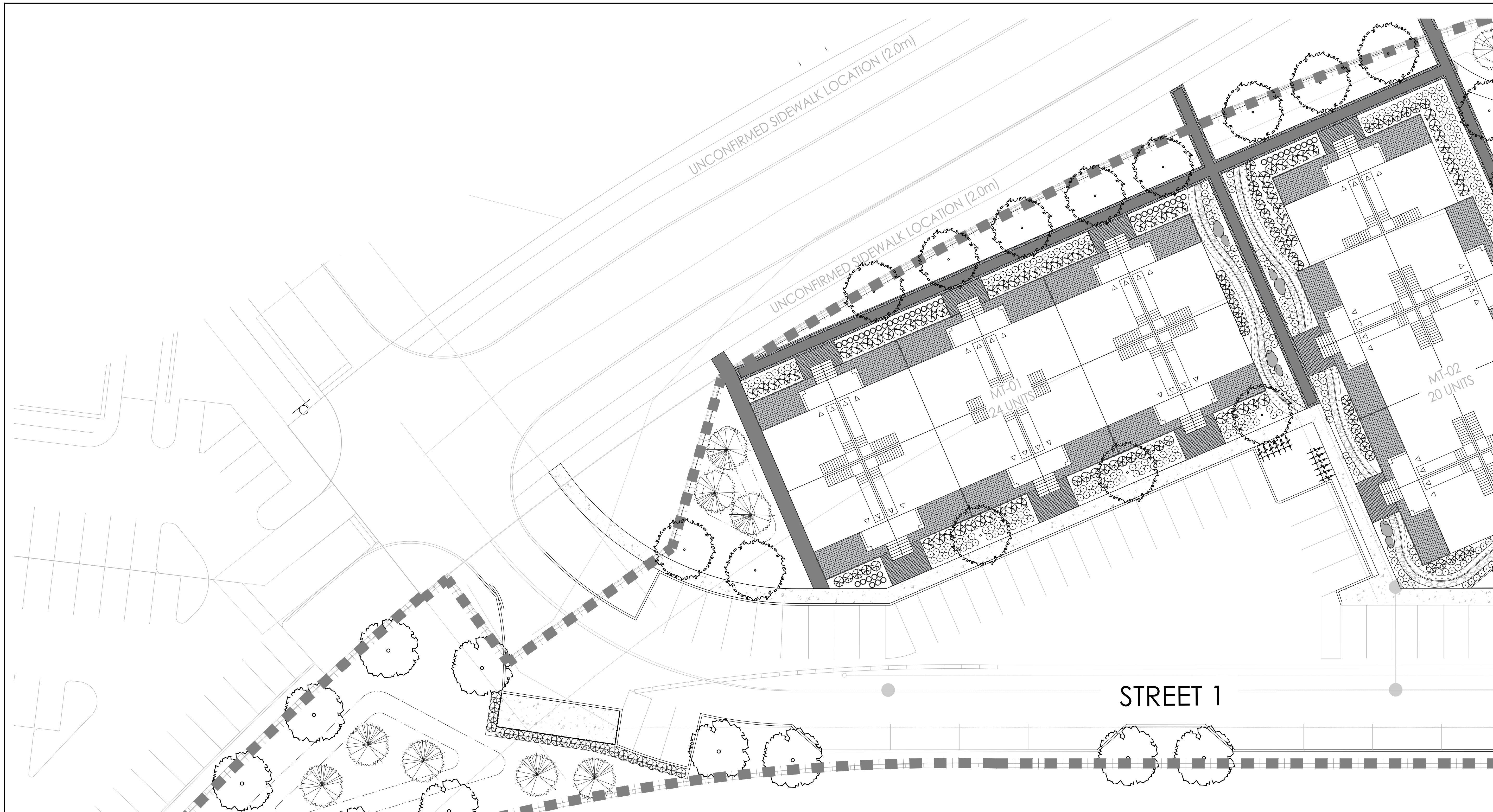
GENERAL NOTES:

- ALL WORKS AND MATERIALS SHALL CONFORM TO THE LATEST REVISION OF THE STANDARDS AND SPECIFICATIONS FOR THE CITY OF OTTAWA, ONTARIO PROVINCIAL STANDARD DRAWINGS (OPSD) AND SPECIFICATIONS (OPSS), WHERE APPLICABLE. LOCAL UTILITY STANDARDS AND MINISTRY OF TRANSPORTATION STANDARDS WILL APPLY WHERE REQUIRED.
- THE CONTRACTOR SHALL CONFIRM THE LOCATION OF ALL EXISTING UTILITIES WITHIN THE SITE AND ADJACENT WORK AREAS. THE CONTRACTOR SHALL BE RESPONSIBLE FOR PROTECTING ALL EXISTING UTILITIES TO THE SATISFACTION OF THE AUTHORITY HAVING JURISDICTION. THE CONTRACTOR SHALL BE RESPONSIBLE FOR THE REPAIR OR REPLACEMENT OF ANY SERVICES OR UTILITIES DISTURBED DURING CONSTRUCTION, TO THE SATISFACTION OF THE AUTHORITY HAVING JURISDICTION.
- ALL DIMENSIONS SHALL BE CHECKED AND VERIFIED IN THE FIELD BY THE CONTRACTOR PRIOR TO THE START OF CONSTRUCTION. ANY DISCREPANCIES SHALL BE REPORTED IMMEDIATELY TO THE ENGINEER. LOST TIME DUE TO FAILURE OF THE CONTRACTOR TO CONFIRM UTILITY LOCATIONS AND NOTIFY ENGINEER OF POSSIBLE CONFLICTS PRIOR TO CONSTRUCTION WILL BE AT THE CONTRACTOR'S EXPENSE.
- ANY AREAS BEYOND THE LIMIT OF THE SITE DISTURBED DURING CONSTRUCTION SHALL BE RESTORED TO ORIGINAL CONDITION OR BETTER TO THE SATISFACTION OF THE AUTHORITY HAVING JURISDICTION AT THE CONTRACTOR'S EXPENSE.
- ALL WORK SHALL BE COMPLETED IN ACCORDANCE WITH THE 'OCCUPATIONAL HEALTH AND SAFETY ACT AND REGULATIONS FOR CONSTRUCTION PROJECTS'. THE GENERAL CONTRACTOR SHALL BE DEEMED TO BE THE 'CONTRACTOR' AS DEFINED IN THE ACT.
- ALL CONSTRUCTION SIGNAGE MUST CONFORM TO THE MINISTRY OF TRANSPORTATION OF ONTARIO MANUAL OF UNIFORM TRAFFIC CONTROL DEVICES PER LATEST AMENDMENT.
- THE CONTRACTOR IS ADVISED THAT WORKS BY OTHERS MAY BE ONGOING DURING THE PERIOD OF THIS CONTRACT. THE CONTRACTOR SHALL COORDINATE CONSTRUCTION ACTIVITIES TO PREVENT CONFLICTS.
- ALL DIMENSIONS ARE IN METRES UNLESS SPECIFIED OTHERWISE.
- THERE WILL BE NO SUBSTITUTION OF MATERIALS UNLESS PRIOR WRITTEN APPROVAL IS RECEIVED FROM THE ENGINEER.
- ALL CONSTRUCTION SHALL BE CARRIED OUT IN ACCORDANCE WITH THE RECOMMENDATIONS MADE IN THE GEOTECHNICAL REPORT.
- ALL SEWERS CONSTRUCTED WITH GRADES LESS THAN 1.0% SHALL BE INSTALLED USING LASER ALIGNMENT AND CHECKED WITH LEVEL INSTRUMENT PRIOR TO BACKFILLING.
- THE CONTRACTOR IS RESPONSIBLE FOR OBTAINING ALL PERMITS REQUIRED AND TO BEAR THE COST OF THE SAME.
- THE CONTRACTOR WILL BE RESPONSIBLE FOR ADDITIONAL BEDDING, OR ADDITIONAL STRENGTH PIPE IF THE MAXIMUM TRENCH WIDTH AS SPECIFIED BY OPSD IS EXCEEDED.
- ALL PIPE / CULVERT SECTION SIZES REFER TO INSIDE DIMENSIONS.
- SHOULD DEEPLY BURIED ARCHAEOLOGICAL REMAINS BE FOUND ON THE PROPERTY DURING CONSTRUCTION ACTIVITIES, THE HERITAGE OPERATIONS UNIT OF THE ONTARIO MINISTRY OF CULTURE MUST BE NOTIFIED IMMEDIATELY.
- ALL NECESSARY CLEARING AND GRUBBING SHALL BE COMPLETED BY THE CONTRACTOR. REVIEW WITH CONTRACT ADMINISTRATOR AND THE CITY OF OTTAWA PRIOR TO ANY TREE CUTTING / REMOVAL.
- DRAWINGS SHALL BE READ IN CONJUNCTION WITH THE SITE PLAN.
- THE CONTRACTOR SHALL PROVIDE THE PROJECT ENGINEER ONE SET OF AS CONSTRUCTED SITE SERVING AND GRADING DRAWINGS.
- BENCHMARKS: IT IS THE RESPONSIBILITY OF THE CONTRACTOR TO VERIFY THAT THE SITE BENCHMARK(S) HAS NOT BEEN ALTERED OR DISTURBED AND THAT ITS RELATIVE ELEVATION AND DESCRIPTION AGREES WITH THE INFORMATION DEPICTED ON THIS PLAN.

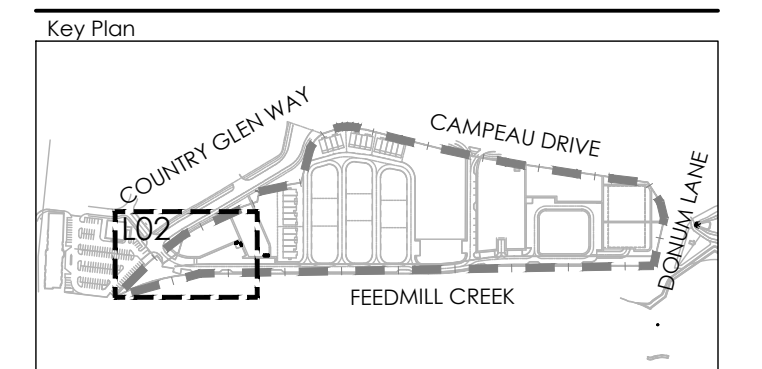
PLANT LIST

KEY	QTY.	BOTANICAL NAME	COMMON NAME	CAL/HT. (mm)	ROOT
<b>LARGE DECIDUOUS TREES (15-30m)</b>					
AS		ACER SACCHARUM	SUGAR MAPLE	50	B&B
CS		GLIEDIA TRICANTHOS VAR. INERMIS	HONEYLOCUST	50	B&B
QR		QUERCUS RUBRA	RED OAK	50	B&B
TA		TILIA AMERICANA	BASSWOOD	50	B&B
<b>MEDIUM DECIDUOUS TREES (7.5m-14m)</b>					
AR		ACER X FRIEDMANI 'ARMSTRONG'	ARMSTRONG MAPLE	40	B&B
PA		PYRUS CALLERYANA 'CAPITAL'	CAPITAL PEAR	40	B&B
SH		SORBUS X HYBRIDA	MOUNTAIN-ASH	40	B&B
SR		SYRINGA RETICULATA	JAPANESE LILAC	40	B&B
TM		TILIA MONGOLICA	MONGOLIAN LINDEN	40	B&B
<b>TREEFORM SHRUBS</b>					
CR		CORNUS KOUSA 'SATOMI'	SATOMI FLOWERING DOGWOOD	175cm	TREEFORM
EO		EUCONYMIUS ALATUS 'COMPACTUS'	DWARF BURNING BUSH	150cm	TREEFORM
Pc		PRUNUS X CISTENA	PURPLE-LEAF SAND CHERRY	175cm	TREEFORM
<b>CONIFEROUS TREES</b>					
PP		PICEA PUNGENS 'AVATAR'	AVATAR BLUE SPRUCE	500cm	B&B
PS		PINUS STROBUS	WHITE PINE	500cm	B&B
<b>DECIDUOUS SHRUBS</b>					
CF		CORNUS SERICEA 'FARROW'	ARCTIC FIRE DOGWOOD	175cm	3 GAL
Cs		CORNUS SERICEA	RED OSIER DOGWOOD	200cm	3 GAL
EF		EUCONYMIUS ALATUS 'FIREBALL'	FIREBALL BURNING BUSH	175cm	3 GAL
Rr		ROSA RUGOSA 'ALBA'	RUGOSA ROSE	175cm	3 GAL
Po		PHYSCOCARPUS OPULIFOLIUS 'DIABOLO'	DIABOLO NINEBARK	175cm	3 GAL
Pv		PHILADELPHUS X VIRGINIALIS	MOCK ORANGE	175cm	3 GAL
<b>CONIFEROUS SHRUBS</b>					
Pm		PINUS MUGO VAR. PUMILIO	DWARF MUGO VAR. PUMILIO	125cm	3 GAL
Js		TAXUS CUSPIDATA AURESCENS	DWARF GOLDEN JAPANESE YEW	100cm	3 GAL
Tc		TSUGA CANADENSIS 'MOON FROST'	MOONFROST CANADIANHEMLOCK	100cm	3 GAL
<b>GRASSES</b>					
cm		CAREX MORROWII 'ICE DANCE'	ICE DANCE SEDGE	30cm	1 GAL
cd		CALAMAGROSTIS X ACUTIFLORA 'KARL FOERSTER'	KARL FOERSTER REED GRASS	150cm	1 GAL
dc		DESCHAMPSIA CESPITOSA	TUFFED HAIR GRASS	100cm	1 GAL
mc		MOULINIA CAERULEA 'VARIEGATA'	VARIEGATED PURPLE MOOR GRASS	70cm	1 GAL
<b>PERENNIALS</b>					
om		ALLIUM X 'MILLENNIUM'	ORNAMENTAL ONION	50cm	1 GAL
ep		ECHINACEA PURPUREA 'GREEN JEWEL'	GREEN JEWEL CONEFLOWER	60cm	1 GAL
rd		RUDBECKIA HIRTA	BLACK-EYED SUSAN	60cm	1 GAL
ho		HOSTA 'AUGUST MOON'	AUGUST MOON HOSTA	45cm	1 GAL
hg		HOSTA 'GREAT ARRIVAL'	GREAT ARRIVAL	65cm	1 GAL
rh		HEMEROCALLIS 'DAD'S BEST WHITE'	DAD'S BEST WHITE	40cm	1 GAL
hj		HEMEROCALLIS 'JOAN SENIOR'	JOAN SENIOR DAYLILY	60cm	1 GAL
sm		SEDUM 'MAESTRO'	MAESTRO STONECROP	60cm	1 GAL
<b>GROUNDCOVERS</b>					
ou		ARCTOSTAPHYLOS UVA-URSI	BEARBERRY	30cm	1 GAL
bd		BUNCHBERRY DOGWOOD	CORNUS CANADENSIS	30cm	1 GAL
ca		CANADA ANEMONE	AMERONE CANADENSIS	30cm	1 GAL
fg		FRAGARIA VIRGINIANA	WILD STRAWBERRY	15cm	1 GAL
Jh		JUNIPERUS HORIZONTALIS 'BLUE CHIP'	BLUE CHIP JUNIPER	30cm	1 GAL
Js		JUNIPERUS SABINA 'ARCADIA'	ARCADIA JUNIPER	30cm	1 GAL
vs		VIOLA SORORIA	BLUE VIOLET	20cm	1 GAL





Contractor shall check all dimensions on the work and report any discrepancy to the Landscape Architect before proceeding. All drawings and specifications are the property of the Landscape Architect and must be returned at the completion of the work. This drawing is not to be used for construction until signed by the Landscape Architect.



**LEGEND**

- PROPERTY LINE
- POST AND RAIL FENCE
- 1.5m ORNAMENTAL FENCE
- 1.8m PRIVACY FENCE
- 1.8m GARBAGE ENCLOSURE FENCE

**PLANTING**

- LARGE DECIDUOUS TREE
- MEDIUM DECIDUOUS TREE
- SMALL DECIDUOUS TREE
- TREEFORM SHRUB
- CONIFEROUS TREE
- DECIDUOUS SHRUB
- CONIFEROUS SHRUB
- PERENNIALS & ORNAMENTAL GRASSES
- GROUNDCOVER
- SOD

**SURFACING**

- RIVER STONE
- UNIT PAVERS LIGHT DUTY PAVING
- CIP CONCRETE LIGHT DUTY PAVING
- ASPHALT LIGHT DUTY PAVING
- ASPHALT LIGHT DUTY PAVING WITH UNIT PAVER BORDER

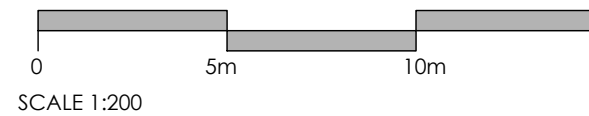
**AMENITIES**

- BENCH
- GRANITE SEATING BOULDERS
- CONTEMPORARY TRELLIS
- WASTE RECEPTACLE

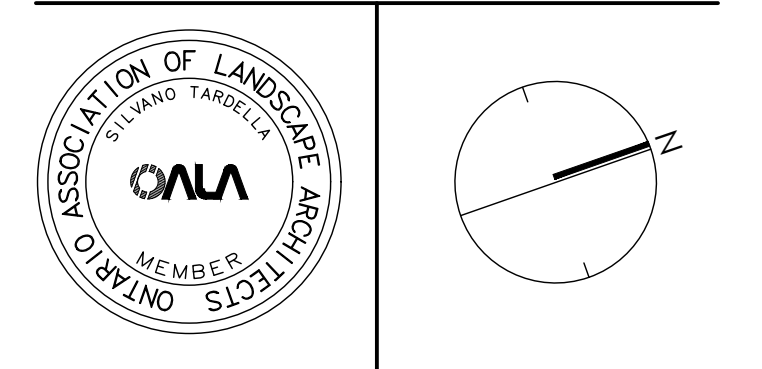
**DETAIL KEY**

- DETAIL NO.
- SHEET NO.

2	Issued for First Submission	July 15/22
1	Issued for client review	July 8/22
No.	Description	Date
Revision		
City Approval Stamp		



PLANT LIST		CAL/HT.	ROOT	GRASSES			
KEY	QTY.	BOTANICAL NAME	COMMON NAME	(mm)			
<b>LARGE DECIDUOUS TREES (15-30m)</b>							
AS		ACER SACCCHARUM	SUGAR MAPLE	50	B&B		
GS		GLEDITSIA TRIACANTHOS VAR. INERMIS	HONEYLOCUST	50	B&B		
QR		QUERCUS RUBRA	RED OAK	50	B&B		
TA		TILIA AMERICANA	BASSWOOD	50	B&B		
<b>MEDIUM DECIDUOUS TREES (7.5m-14m)</b>							
AR		ACER X FREEMANI 'ARMSTRONG'	ARMSTRONG MAPLE	60	B&B		
PA		PYRUS CALLERYANA 'CAPITAL'	CAPITAL PEAR	60	B&B		
SH		SORBUS X HYBRIDA	MOUNTAIN-ASH	60	B&B		
SR		SYRINGA REICULATA	JAPANESE LILAC	60	B&B		
TM		TILIA MONGOLICA	MONGOLIAN LINDEN	60	B&B		
<b>TREEFORM SHRUBS</b>							
CR		CORNUS KOUSA 'SATOME'	SATOMI FLOWERING DOGWOOD	175cm	TREEFORM		
EO		EUONYMUS ALATUS 'COMPACTUS'	DWARF BURNING BUSH	150cm	TREEFORM		
PC		PRUNUS X CISTENA	PURPLE-LEAF SAND CHERRY	175cm	TREEFORM		
<b>CONIFEROUS TREES</b>							
PP		PICEA PUNGENS 'AVATAR'	AVATAR BLUE SPRUCE	500cm	B&B		
PS		PINUS STROBUS	WHITE PINE	500cm	B&B		
<b>DECIDUOUS SHRUBS</b>							
CT		CORNUS SERICEA 'FARROW'	ARCTIC FIRE DOGWOOD	175cm	3 GAL.		
CS		CORNUS SERICEA	RED OSIER DOGWOOD	200cm	3 GAL.		
EF		EUONYMUS ALATUS 'FIREBALL'	FIREBALL BURNING BUSH	175cm	3 GAL.		
R		ROSA RUGOSA 'ALBA'	RUGOSA ROSE	175cm	3 GAL.		
PO		PHYSCALOPUS QUERIFOLIUS 'DIABOLO'	DIABOLO NINEBARK	175cm	3 GAL.		
PV		PHILADELPHUS X VIRGINIALIS	MOCK ORANGE	175cm	3 GAL.		
<b>CONIFEROUS SHRUBS</b>							
Pm		PINUS MUGO VAR. PUMILO	DWARF MUGO VAR. PUMILO	125cm	3 GAL.		
J		TAXUS CUSPIDATA AUDESCENS	DWARF GOLDEN JAPANESE YEW	100cm	3 GAL.		
Tc		TSUGA CANADENSIS 'MOON FROST'	MOONFROST CANADIANHEMLOCK	100cm	3 GAL.		
<b>GRASSES</b>							
cm		CAREX MORROWII 'ICE DANCE'	ICE DANCE SEDGE	30cm	1 GAL.		
ca		CALAMAGROSTIS X ACUTIFLORA 'KARL FOERSTER'	KARL FOERSTER REED GRASS	150cm	1 GAL.		
dc		DESCHAMPSIA CESPIOSA	TUFTED HAIR GRASS	100cm	1 GAL.		
mc		MOLINIA CAERULEA 'VAREGATA'	VARIATED PURPLE MOOR GRASS	70cm	1 GAL.		
<b>PERENNIALS</b>							
cm		ALLIUM X 'MILLENIUM'	ORNAMENTAL ONION	50cm	1 GAL.		
ep		ECHINACEA PURPUREA 'GREEN JEWEL'	GREEN JEWEL CONEFLOWER	60cm	1 GAL.		
rd		RUDBECKIA HIRTA	BLACK-EYED SUSAN	60cm	1 GAL.		
ho		HOSTA 'AUGUST MOON'	AUGUST MOON HOSTA	45cm	1 GAL.		
hg		HOSTA 'GREAT ARRIVAL'	GREAT ARRIVAL	65cm	1 GAL.		
hh		HEMEROCALLIS 'DAD'S BEST WHITE'	DAD'S BEST WHITE	60cm	1 GAL.		
hj		HEMEROCALLIS 'JOAN SENIOR'	JOAN SENIOR DAYLILY	60cm	1 GAL.		
sm		SEDUM 'MAESTRO'	MAESTRO STONECROP	60cm	1 GAL.		
<b>GROUNDCOVERS</b>							
gu		ARCTOSTAPHYLOS UVA-URSI	BEARBERRY	30cm	1 GAL.		
bd		BUNCHBERRY DOGWOOD	CORNUS CANADENSIS	30cm	1 GAL.		
ca		CANADA ANEMONE	AMENONE CANADENSIS	30cm	1 GAL.		
fg		FRAGARIA VIRGINIANA	WILD STRAWBERRY	15cm	1 GAL.		
Jh		JUNIPERUS HORIZONTALIS 'BLUE CHIP'	BLUE CHIP JUNIPER	30cm	1 GAL.		
Js		JUNIPERUS SABINA 'ARCADIA'	ARCADIA JUNIPER	30cm	1 GAL.		
vs		VIOLA SORORIA	BLUE VIOLET	20cm	1 GAL.		

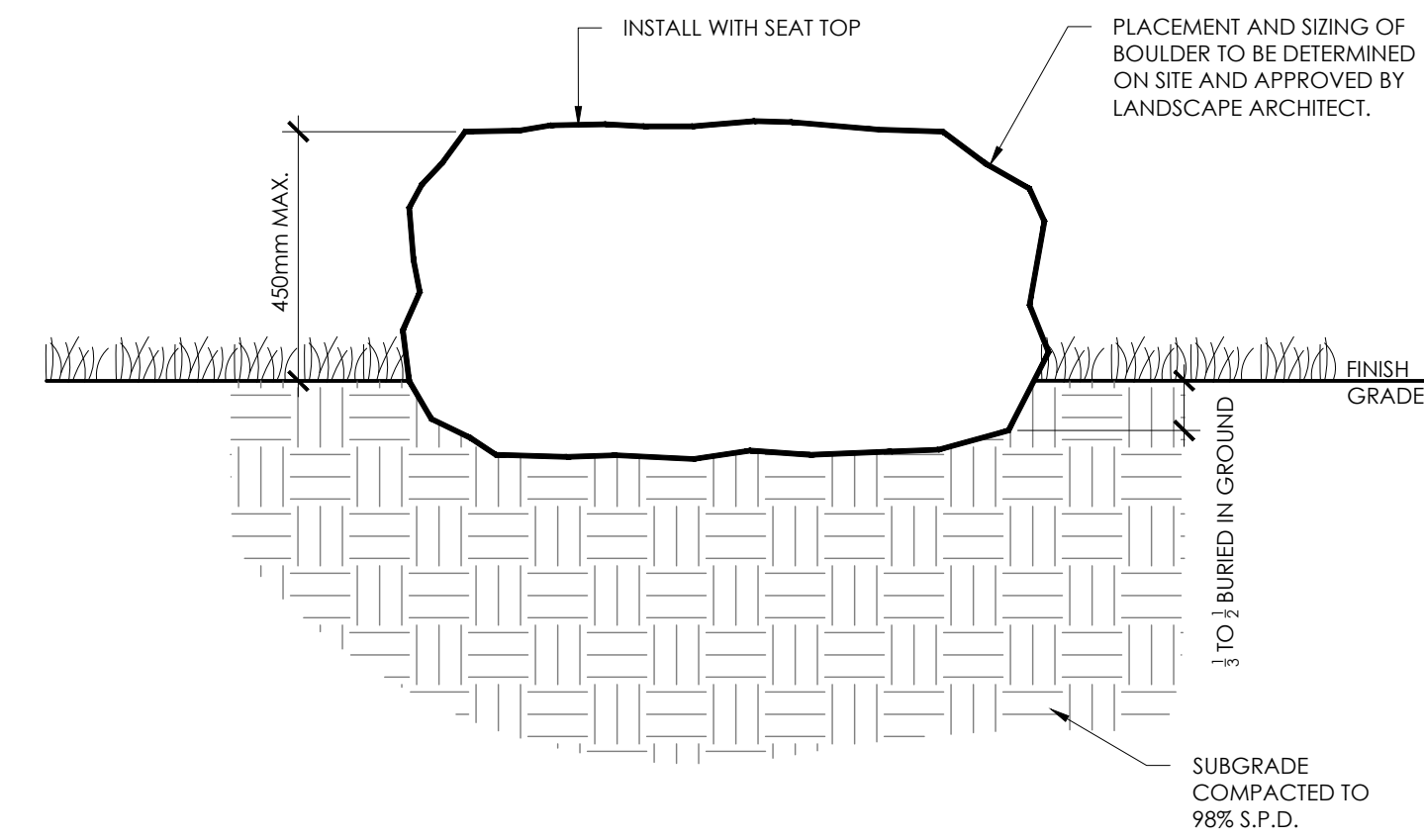
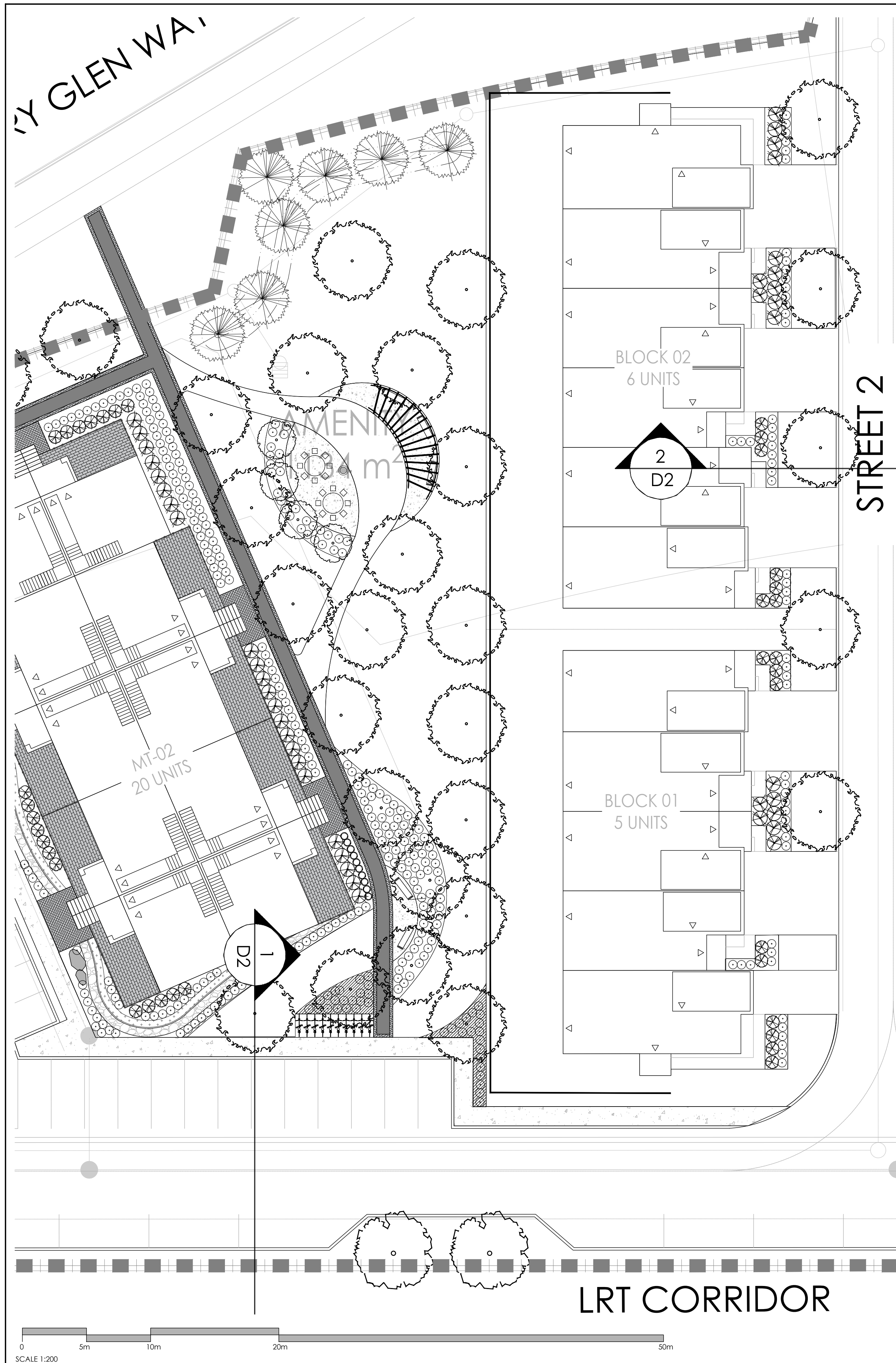


**NAK** design strategies  
 1285 WELLINGTON STREET, OTTAWA, ON K1Y 3A8 CANADA  
 T 613.237.2345 F 613.237.6423 NAKDESIGNSTRATEGIES.COM

MINTO COMMUNITIES  
 ARCADIA  
 STAGE 6

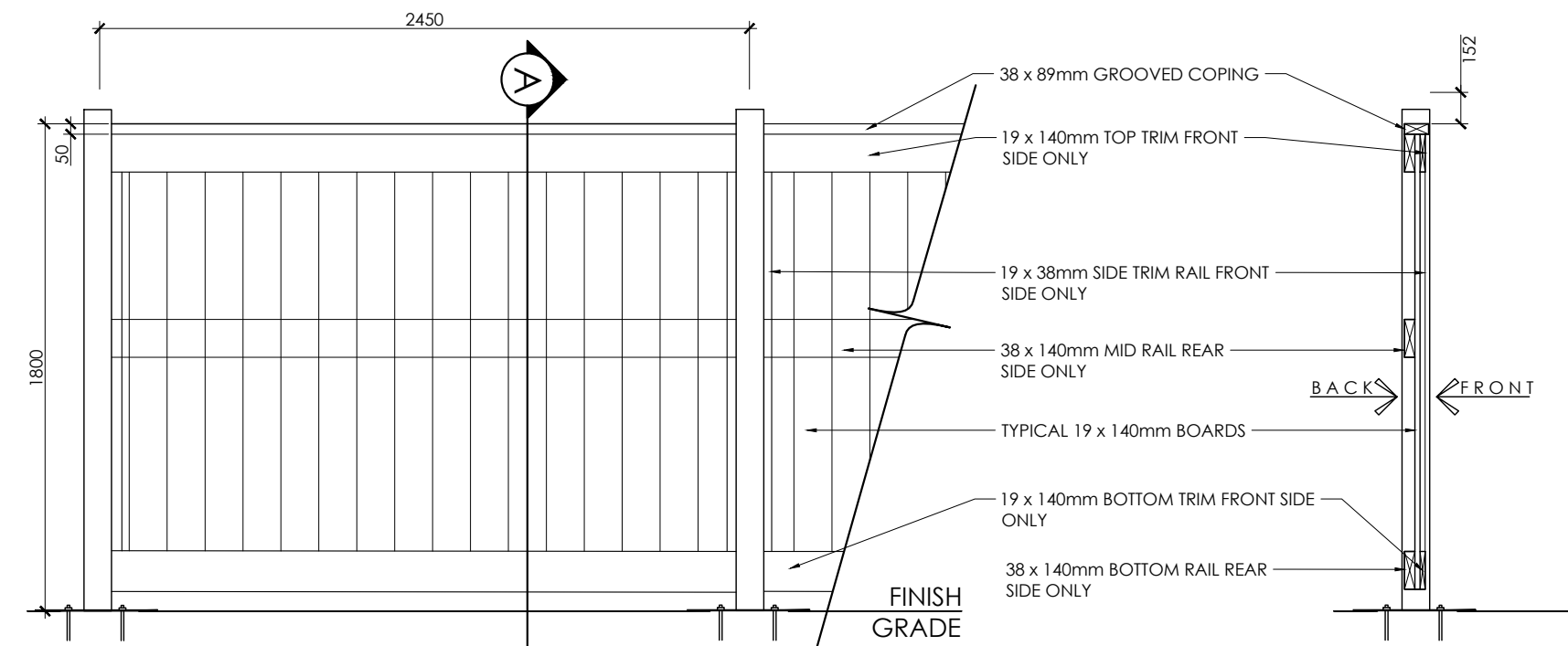
Title: LANDSCAPE PLAN  
 Date: JULY 2022  
 Scale: 1:200  
 Drawn: SH  
 Checked: MK  
 Job No.: 21-089

Sheet: L02



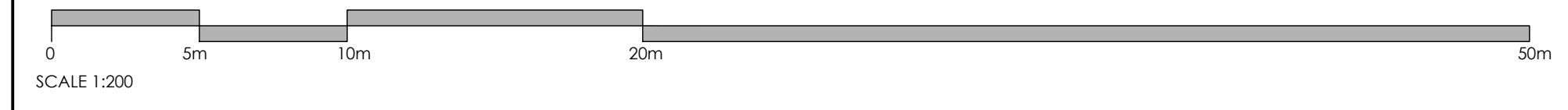
**NOTES:**  
 1. NO SHARP EDGES, CRACKS OR SPALLING.  
 2. NO FROST SUSCEPTIBLE BOULDER

1 GRANITE SEATING BOULDER  
N.T.S.

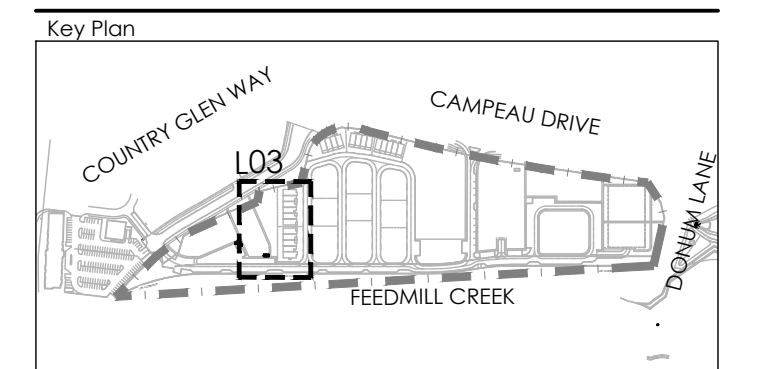


**NOTES:**  
 1. ALL WOOD COMPONENTS SHALL BE NO.1 CONSTRUCTION GRADE WESTERN RED CEDAR, EXCEPT FOR THE PRESSURE-TREATED SKIRT RAIL.  
 2. ALL WOOD COMPONENTS SHALL BE TREATED WITH 2 COATS OF STAIN, COLOUR TO BE APPROVED BY THE OWNER AND LANDSCAPE ARCHITECT.  
 3. USE GALVANIZED FASTENERS AND HARDWARE THROUGHOUT.

2 1.8m PRIVACY FENCE  
N.T.S.



Contractor shall check all dimensions on the work and report any discrepancy to the Landscape Architect before proceeding. All drawings and specifications are the property of the Landscape Architect and must be returned at the completion of the work. This drawing is not to be used for construction until signed by the Landscape Architect.



**LEGEND**

- PROPERTY LINE
- POST AND RAIL FENCE
- 1.5m ORNAMENTAL FENCE
- 1.8m PRIVACY FENCE
- 1.8m GARBAGE ENCLOSURE FENCE

**PLANTING**

- LARGE DECIDUOUS TREE
- MEDIUM DECIDUOUS TREE
- SMALL DECIDUOUS TREE
- TREEFORM SHRUB
- CONIFEROUS TREE
- DECIDUOUS SHRUB
- CONIFEROUS SHRUB
- PERENNIALS & ORNAMENTAL GRASSES

**SURFACING**

- GROUNDCOVER
- SOD
- RIVER STONE
- UNIT PAVERS LIGHT DUTY PAVING
- CIP CONCRETE LIGHT DUTY PAVING
- ASPHALT LIGHT DUTY PAVING
- ASPHALT LIGHT DUTY PAVING WITH UNIT PAVER BORDER

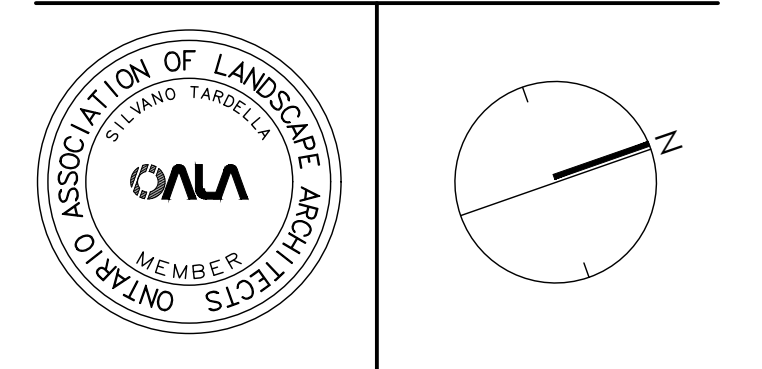
**AMENITIES**

- BENCH
- GRANITE SEATING BOULDERS
- CONTEMPORARY TRELLIS
- WASTE RECEPTACLE

**DETAIL KEY**

- 1 D1 DETAIL NO., SHEET NO.

No.	Description	Date
2	Issued for First Submission	July 15/22
1	Issued for client review	July 8/22
Revision		
City Approval Stamp		



**NAK** design strategies  
 1285 WELLINGTON STREET, OTTAWA, ON K1Y 3A8 CANADA  
 T 613.237.2345 F 613.237.6423 NAKDESIGNSTRATEGIES.COM

MINTO COMMUNITIES  
 ARCADIA  
 STAGE 6

Title: LANDSCAPE PLAN AMENITY AREA

Date: JULY 2022  
 Scale: 1:200  
 Drawn: SH  
 Checked: MK  
 Job No.: 21-089

Sheet: L03



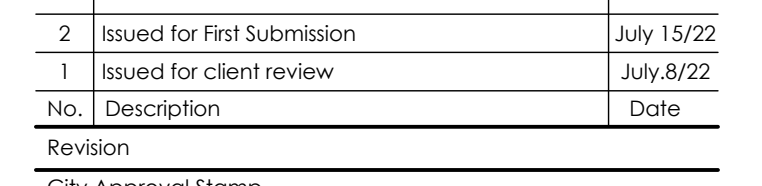
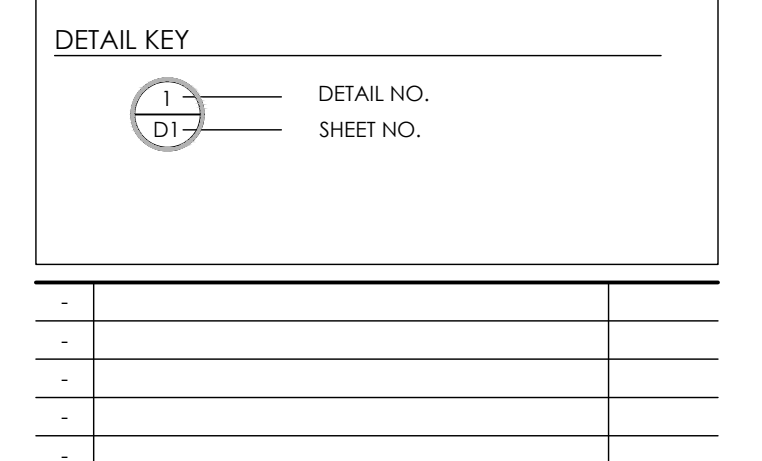
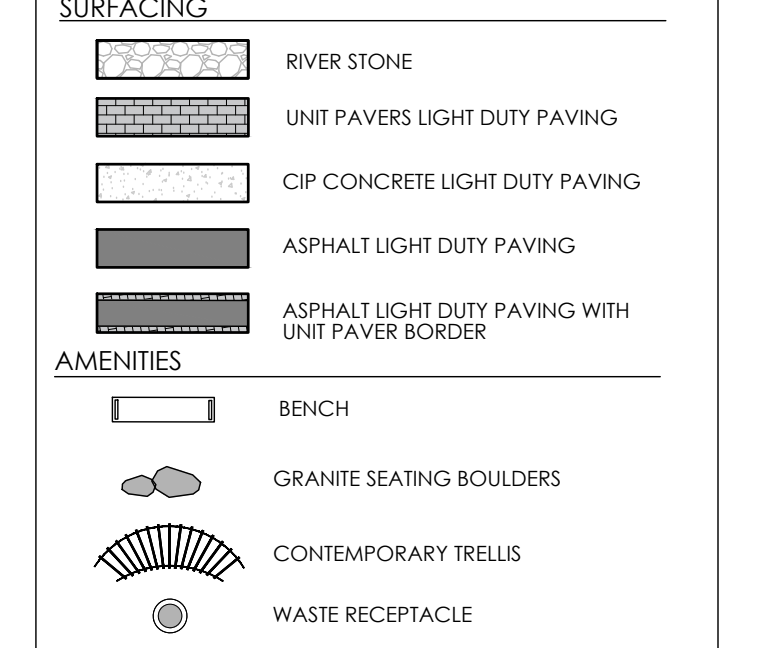
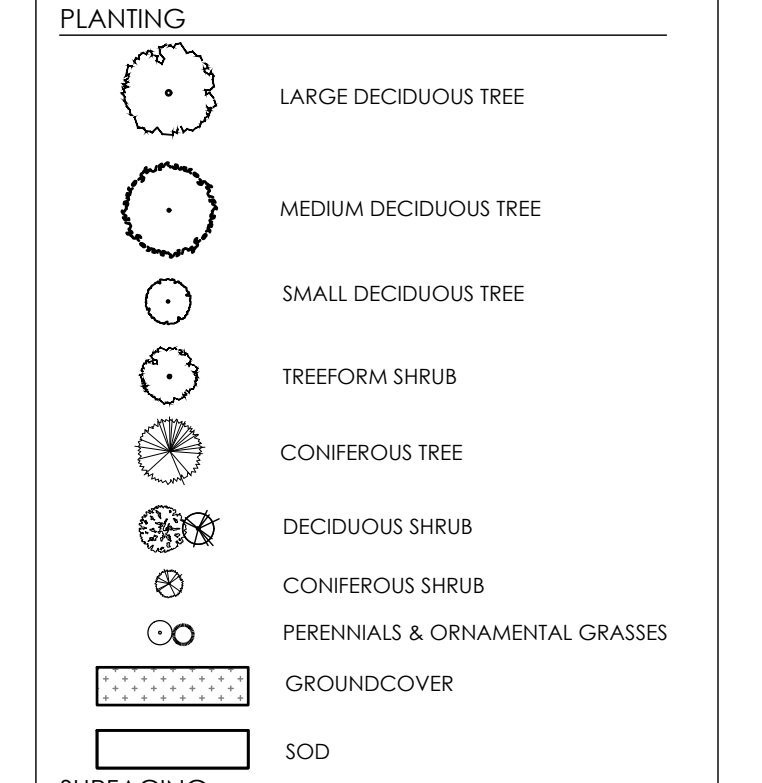
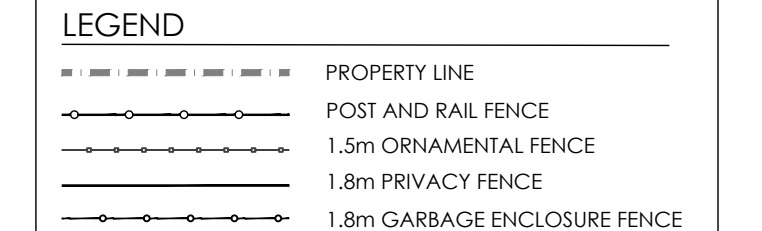
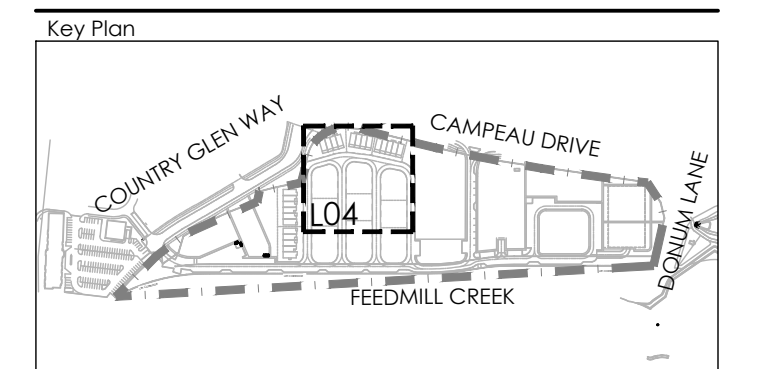
**TREE PLANTING IN MARINE CLAY SOILS**

- THIS LANDSCAPE PLAN CONFORMS WITH THE TREE-TO-FOUNDATION SETBACK, SOIL VOLUME, AND SURFACE-GRADING REQUIREMENTS OUTLINED IN THE CITY OF OTTAWA'S GUIDELINES FOR TREE PLANTING IN SENSITIVE MARINE CLAY SOILS (2017), BASED ON THE FINDINGS OUTLINED IN THE PROJECT GEOTECHNICAL REPORT.
- ADDITIONAL REQUIREMENTS OUTLINED IN THE CITY OF OTTAWA'S GUIDELINES FOR TREE PLANTING IN SENSITIVE MARINE CLAY SOILS (2017), INCLUDING USF DEPTH, FOUNDATION WALL REINFORCEMENT, AND SUBDIVISION GRADING, SHOULD BE CONFIRMED BY THE PROJECT ENGINEER(S).
- THE CONTRACTOR SHOULD REPORT ANY DISCREPANCIES TO THE CONTRACT ADMINISTRATOR BEFORE PLANTING TREES.
- CITY OF OTTAWA: GUIDELINES FOR TREE PLANTING IN SENSITIVE MARINE CLAY SOILS (2017): THE FOLLOWING GUIDELINES ARE PRIMARILY FOCUSED ON SMALL AND MEDIUM SIZE STREET TREES. HOWEVER, LARGE TREES (MATURE HEIGHT OVER 14M) CAN STILL BE PLANTED IN AREAS OF SMC SOILS PROVIDED A TREE TO FOUNDATION SETBACK EQUAL TO THE FULL MATURE HEIGHT OF THE TREE CAN BE PROVIDED (E.G. IN A PARK OR OTHER GREEN SPACE). FOR STREET TREES IN THE ROAD RIGHT-OF-WAY WHERE SMC SOILS HAVE BEEN IDENTIFIED, THE TREE TO FOUNDATION SETBACKS MAY BE REDUCED TO 4.5M FOR SMALL (MATURE TREE HEIGHT UP TO 7.5M) AND MEDIUM SIZE TREES (MATURE TREE HEIGHT 7.5M-14M) PROVIDED ALL OF THE FOLLOWING SIX CONDITIONS ARE MET:
  - THE MODIFIED PLASTICITY INDEX OF THE SOIL BETWEEN THE UNDERSIDE OF FOOTING (USF) AND A DEPTH OF 3.5M GENERALLY DOES NOT EXCEED 40%. THIS CORRESPONDS TO SOILS WITH LOW/MEDIUM POTENTIAL FOR SOIL VOLUME CHANGE. CLAY SOILS THAT EXCEED THE 40% PLASTICITY INDEX ARE CONSIDERED TO HAVE HIGH POTENTIAL FOR SOIL VOLUME CHANGE. FOR THESE WORST-CASE SOILS, THE SETBACKS AND TREE PLANTING RESTRICTIONS REMAIN UNCHANGED FROM THE 2005 CLAY SOILS POLICY (TREE SETBACK MUST EQUAL THE MATURE HEIGHT OF THE TREE - I.E. 7.5M SETBACK FOR SMALL TREES).
  - THE USF IS 2.1M OR GREATER BELOW THE LOWEST FINISHED GRADE. NOTE: THIS FOOTING LEVEL MUST BE SATISFIED FOR FOOTINGS WITHIN 10M OF THE TREE, AS MEASURED FROM THE CENTRE OF THE TREE TRUNK, AND VERIFIED BY MEANS OF THE GRADING PLAN AS INDICATED IN THE PROCEDURAL CHANGES BELOW.
  - A SMALL SIZE TREE MUST BE PROVIDED WITH A MINIMUM OF 25M<sup>3</sup> OF AVAILABLE SOIL VOLUME, AS DETERMINED BY A LANDSCAPE ARCHITECT. A MEDIUM SIZE TREE MUST BE PROVIDED WITH A MINIMUM OF 30M<sup>3</sup> OF AVAILABLE SOIL VOLUME, AS DETERMINED BY A LANDSCAPE ARCHITECT. THE DEVELOPER WILL ENSURE THE SOIL IS GENERALLY UNCOMPACTED WHEN BACKFILLING IN STREET TREE PLANTING LOCATIONS.
  - NOTE: THE SOIL VOLUME CALCULATION MUST BE BASED ON A DEPTH OF 1.5M BELOW FINISHED GRADE (E.G. 5M LENGTH X 4M WIDTH AT SURFACE X 1.5M DEPTH = 30M<sup>3</sup>). IT MAY INCLUDE LANDS IN THE RIGHT-OF-WAY AND ON PRIVATE PROPERTY, BUT MUST SUBTRACT THE VOLUME OF SHALLOW UTILITY TRENCHES (I.E. VOLUME OF SHALLOW UTILITY TRENCHES CANNOT COUNT TOWARDS MINIMUM SOIL VOLUME).
  - THE TREE SPECIES MUST BE SMALL TO MEDIUM SIZE, AS CONFIRMED BY A LANDSCAPE ARCHITECT IN THE LANDSCAPE PLAN.
  - THE FOUNDATION WALLS ARE TO BE REINFORCED AT LEAST NOMINALLY (MINIMUM OF TWO UPPER AND TWO LOWER 15M BARS IN THE FOUNDATION WALL) TO PROVIDE DUCTILITY AS DESCRIBED IN THE GEOTECHNICAL REPORT.
  - GRADING SURROUNDING THE TREE MUST PROMOTE DRAINING TO THE TREE ROOT ZONE (IN SUCH A MANNER AS NOT TO BE DETRIMENTAL TO THE TREE), AS NOTED ON THE SUBDIVISION GRADING PLAN.

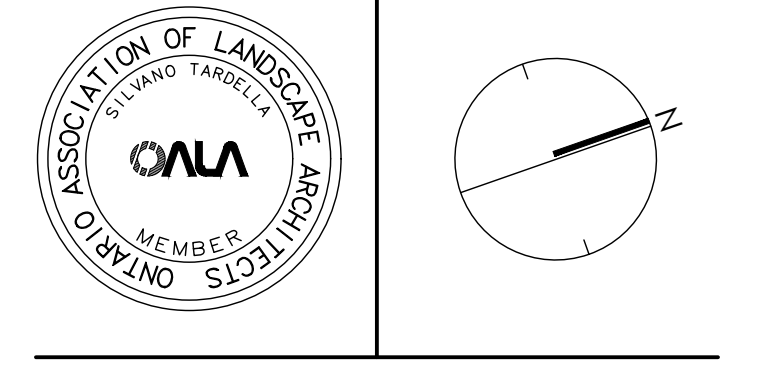
**PLANT LIST**

KEY	QTY.	BOTANICAL NAME	COMMON NAME	CAL/HT. (mm)	ROOT (mm)
<b>LARGE DECIDUOUS TREES (15-30m)</b>					
AR		ACER SACCHARUM	SUGAR MAPLE	50	8.8B
GS		GLEDITSIA TRACANTHOS VAR. INERMIS	HONEYLOCUST	50	8.8B
OR		QUERCUS RUBRA	RED OAK	50	8.8B
TA		TILIA AMERICANA	BASSWOOD	50	8.8B
<b>MEDIUM DECIDUOUS TREES (7.5m-14m)</b>					
AR		ACER X FREEMANNI 'ARMSTRONG'	AMSTRONG MAPLE	60	8.8B
PA		PYRUS CALLERYANA 'CAPITAL'	CAPITAL PEAR	60	8.8B
SH		SORBUS HYBRIDA	MOUNTAIN-ASH	60	8.8B
JR		SYRINGA RETICULATA	JAPANESE LILAC	60	8.8B
TM		TILIA MONGOLICA	MONGOLIAN LINDEN	60	8.8B
<b>TREEFORM SHRUBS</b>					
Ck		CORNUS KOUSA 'SATOMI'	SATOMI FLOWERING DOGWOOD	175cm	TREEFORM
Ec		EUONYMUS ALATUS 'COMPACTUS'	DWARF BURNING BUSH	150cm	TREEFORM
Pc		PRUNUS X CISTENA	PURPLE-LEAF SAND CHERRY	175cm	TREEFORM
<b>CONIFEROUS TREES</b>					
PP		PICEA PLUNGENS 'AVATAR'	AVATAR BLUE SPRUCE	500cm	8.8B
PS		PINUS STROBUS	WHITE PINE	500cm	8.8B
<b>DECIDUOUS SHRUBS</b>					
Cf		CORNUS SERICEA 'FARROW'	ARCTIC FIRE DOGWOOD	175cm	3 GAL.
Cs		CORNUS SERICEA	RED OSIER DOGWOOD	200cm	3 GAL.
Et		EUONYMUS ALATUS 'FIREBALL'	FIREBALL BURNING BUSH	175cm	3 GAL.
Rr		ROSA RUGOSA 'ALBA'	RUGOSA ROSE	175cm	3 GAL.
Po		PHYSOCARPUS OPIULIFOLIUS 'DIABOLO'	DIABOLO NINEBARK	175cm	3 GAL.
Pv		PHILADELPHUS X VIRGINIALIS	MOCK ORANGE	175cm	3 GAL.
<b>CONIFEROUS SHRUBS</b>					
Pm		PINUS MUGO VAR. PUMILIO	DWARF MUGO VAR. PUMILIO	125cm	3 GAL.
Js		TAXUS CUSPIDATA 'AURESCENS'	DWARF GOLDEN JAPANESE YEW	100cm	3 GAL.
Tc		TSUGA CANADENSIS 'MOON FROST'	MOONFROST CANADIANHEMLOCK	100cm	3 GAL.
<b>GRASSES</b>					
cm		CAREX MORROWII 'ICE DANCE'	ICE DANCE SEDGE	30cm	1 GAL.
ca		CALAMAGROSTIS X ACUTIFLORA 'KARL FOERSTER'	KARL FOERSTER REED GRASS	150cm	1 GAL.
dc		DESCHAMPSIA CESPITOSA	TUFTED HAIR GRASS	100cm	1 GAL.
mc		MOLINIA CAERULEA 'VARIEGATA'	VARIEGATED PURPLE MOOR GRASS	70cm	1 GAL.
<b>PERENNIALS</b>					
am		ALLIUM X 'MILLENIUM'	ORNAMENTAL ONION	50cm	1 GAL.
ep		ECHINACEA PURPUREA 'GREEN JEWEL'	GREEN JEWEL CONEFLOWER	60cm	1 GAL.
rd		RUDBECKIA HIRTA	BLACK-EYED SUSAN	60cm	1 GAL.
ho		HOSTA 'AUGUST MOON'	AUGUST MOON HOSTA	45cm	1 GAL.
hg		HOSTA 'GREAT ARRIVAL'	GREAT ARRIVAL	65cm	1 GAL.
hh		HEMEROCALLIS 'DAD'S BEST WHITE'	DAD'S BEST WHITE	60cm	1 GAL.
hj		HEMEROCALLIS 'JOAN SENIOR'	JOAN SENIOR DAYLILY	60cm	1 GAL.
sm		SEDUM 'MAESTRO'	MAESTRO STONECROP	60cm	1 GAL.
<b>GROUNDCOVERS</b>					
du		ARCTOSTAPHYLOS UVA-URSI	BEARBERRY	30cm	1 GAL.
bd		BUNCHBERRY DOGWOOD	CORNUS CANADENSIS	30cm	1 GAL.
ca		CANADA ANEMONE	AMENONE CANADAENSIS	30cm	1 GAL.
fg		FRAGARIA VIRGINIANA	WILD STRAWBERRY	15cm	1 GAL.
jp		JUNIPERUS HORIZONTALIS 'BLUE CHIP'	BLUE CHIP JUNIPER	30cm	1 GAL.
js		JUNIPERUS SABINA 'ARCADIA'	ARCADIA JUNIPER	30cm	1 GAL.
vs		VIOLA SORORIA	BLUE VIOLET	20cm	1 GAL.

Contractor shall check all dimensions on the work and report any discrepancy to the Landscape Architect before proceeding. All drawings and specifications are the property of the Landscape Architect and must be returned at the completion of the work. This drawing is not to be used for construction until signed by the Landscape Architect.



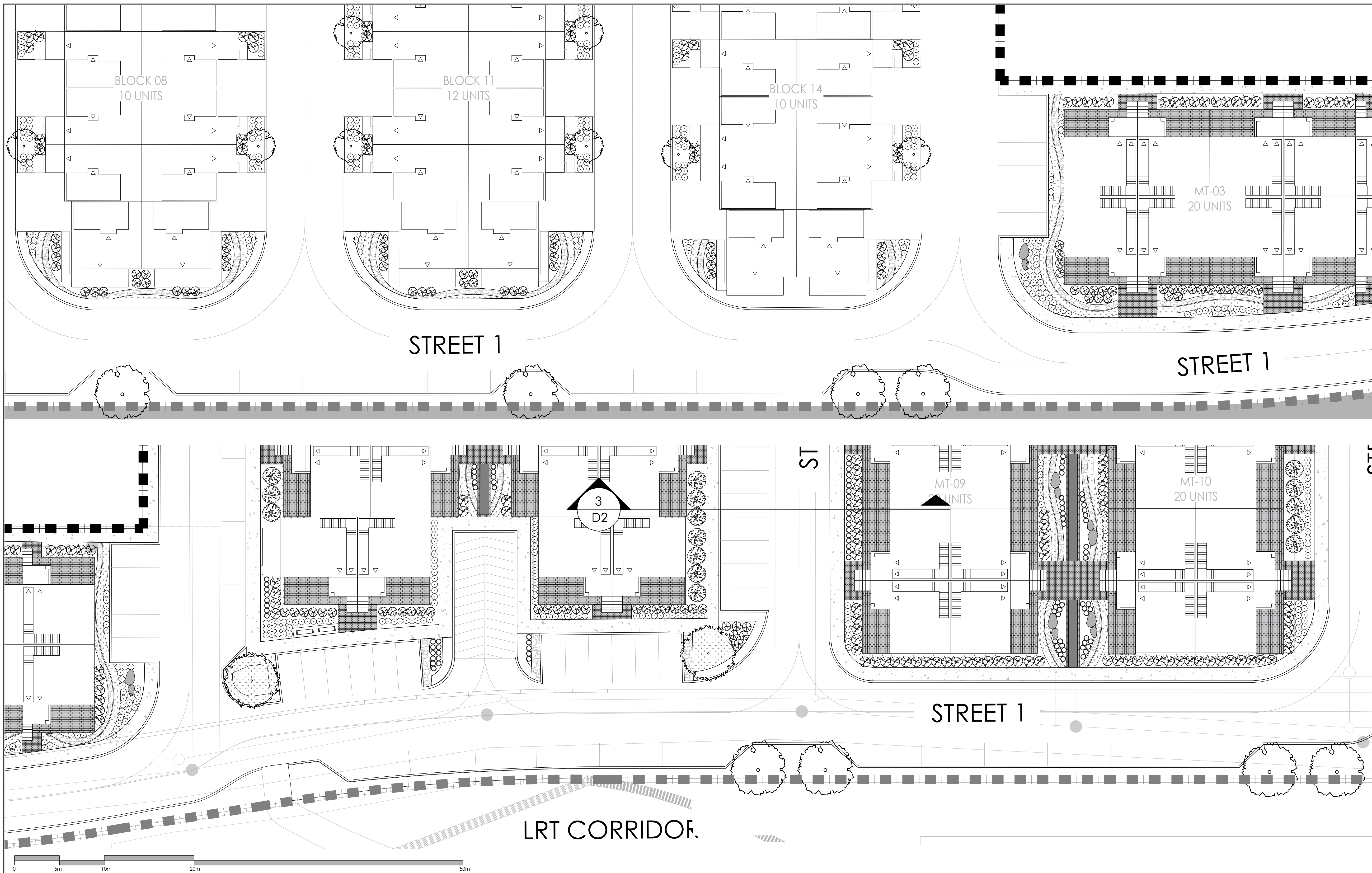
No.	Description	Date
2	Issued for First Submission	July 15/22
1	Issued for client review	July 8/22



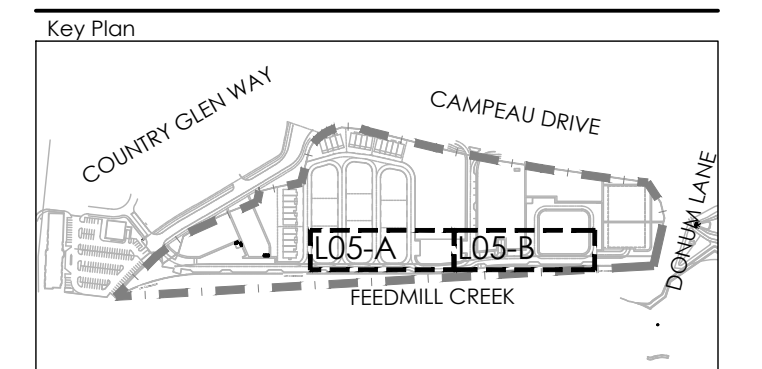
**NAK design strategies**  
 1285 WELLINGTON STREET, OTTAWA, ON K1Y 3A8 CANADA  
 T 613.237.2345 F 613.237.6423 NAKDESIGNSTRATEGIES.COM

Project: **MINTO COMMUNITIES ARCADIA STAGE 6**  
 Title: **LANDSCAPE PLAN**

Date: JULY 2022 Sheet: **L04**  
 Scale: 1:200  
 Drawn: SH  
 Checked: MK  
 Job No.: 21-089



Contractor shall check all dimensions on the work and report any discrepancy to the Landscape Architect before proceeding. All drawings and specifications are the property of the Landscape Architect and must be returned at the completion of the work. This drawing is not to be used for construction until signed by the Landscape Architect.



**LEGEND**

- PROPERTY LINE
- POST AND RAIL FENCE
- 1.5m ORNAMENTAL FENCE
- 1.8m PRIVACY FENCE
- 1.8m GARBAGE ENCLOSURE FENCE

**PLANTING**

- LARGE DECIDUOUS TREE
- MEDIUM DECIDUOUS TREE
- SMALL DECIDUOUS TREE
- TREEFORM SHRUB
- CONIFEROUS TREE
- DECIDUOUS SHRUB
- CONIFEROUS SHRUB
- PERENNIALS & ORNAMENTAL GRASSES

**SURFACING**

- GROUND COVER
- SOD
- RIVER STONE
- UNIT PAVERS LIGHT DUTY PAVING
- CIP CONCRETE LIGHT DUTY PAVING
- ASPHALT LIGHT DUTY PAVING
- ASPHALT LIGHT DUTY PAVING WITH UNIT PAVER BORDER

**AMENITIES**

- BENCH
- GRANITE SEATING BOULDERS
- CONTEMPORARY TRELLIS
- WASTE RECEPTACLE

**DETAIL KEY**

- DETAIL NO.
- SHEET NO.

2	Issued for First Submission	July 15/22
1	Issued for client review	July 8/22
No.	Description	Date
Revision		
City Approval Stamp		

**NAK** design strategies  
 1285 WELLINGTON STREET, OTTAWA, ON K1Y 3A8 CANADA  
 T 613.237.2345 F 613.237.6423 NAKDESIGNSTRATEGIES.COM

**MINTO COMMUNITIES**  
**ARCADIA**  
 STAGE 6

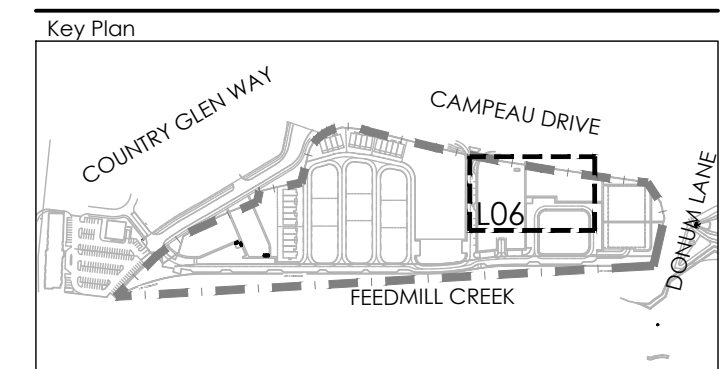
Title: LANDSCAPE PLAN

Date: JULY 2022 Sheet: L05  
 Scale: 1:200  
 Drawn: SH  
 Checked: MK  
 Job No.: 21-089

SCALE 1:200

KEY	QTY	BOTANICAL NAME	COMMON NAME	CAL/HT. (mm)	ROOT
<b>LARGE DECIDUOUS TREES (15-30m)</b>					
AS		ACER SACCHARUM	SUGAR MAPLE	50	B&B
GS		GLEDITSIA TRIACANTHOS VAR. INERMIS	HONEYLOCUST	50	B&B
QR		QUERCUS RUBRA	RED OAK	50	B&B
TA		TILIA AMERICANA	BASSWOOD	50	B&B
<b>MEDIUM DECIDUOUS TREES (7.5m-14m)</b>					
AR		ACER X FREEMANI 'ARMSTRONG'	AMSTRONG MAPLE	60	B&B
PA		PYRUS CALLERYANA 'CAPITAL'	CAPITAL PEAR	60	B&B
SH		SORBUS X HYBRIDA	MOUNTAINASH	60	B&B
SR		SYRINGA RETICULATA	JAPANESE LILAC	60	B&B
TM		TILIA MONGOLICA	MONGOLIAN LINDEN	60	B&B
<b>TREEFORM SHRUBS</b>					
CK		CORNUS KOUSA 'SATOMI'	SATOMI FLOWERING DOGWOOD	175cm	TREEFORM
ED		EUCONYMIUS ALATUS 'COMPACTUS'	DWARF BURNING BUSH	150cm	TREEFORM
PC		PRUNUS X CISTENA	PURPLE-LEAF SAND CHERRY	175cm	TREEFORM
<b>CONIFEROUS TREES</b>					
PP		PICEA PUNGENS 'AVATAR'	AVATAR BLUE SPRUCE	500cm	B&B
PS		PRINUS STROBUS	WHITE PINE	500cm	B&B
<b>DECIDUOUS SHRUBS</b>					
CT		CORNUS SERICEA 'FARROW'	ARCTIC FIRE DOGWOOD	175cm	3 GAL.
Cs		CORNUS SERICEA	RED OSIER DOGWOOD	200cm	3 GAL.
EF		EUCONYMIUS ALATUS 'FIREBALL'	FIREBALL BURNING BUSH	175cm	3 GAL.
Rr		ROSA RUGOSA 'ALBA'	RUGOSA ROSE	175cm	3 GAL.
PO		PHYSCOCARPUS OPULIFOLIUS 'DIABOLO'	DIABOLO NINEBARK	175cm	3 GAL.
Pv		PHILADELPHUS X VIRGINALIS	MOCK ORANGE	175cm	3 GAL.
<b>CONIFEROUS SHRUBS</b>					
Pm		PRINUS MUGO VAR. PUMILIO	DWARF MUGO VAR. PUMILIO	125cm	3 GAL.
Jc		TAXUS CUSPIDATA AURESCENS	DWARF GOLDEN JAPANESE YEW	100cm	3 GAL.
Tc		'SUGA CANADENSIS' 'MOON FROST'	MOONFROST CANADIANHEMLOCK	100cm	3 GAL.
<b>GRASSES</b>					
cm		CAREX MORROWII 'ICE DANCE'	ICE DANCE SEDGE	30cm	1 GAL.
cd		CALAMAGROSTIS X ACUTEFLORA 'KARL FOERSTER'	KARL FOERSTER REED GRASS	150cm	1 GAL.
dc		DESCHAMPSIA CESPITOSA	TUFTED HAIR GRASS	100cm	1 GAL.
mc		MOLINIA CAERULEA 'VARIEGATA'	VARIEGATED PURPLE MOOR GRASS	70cm	1 GAL.
<b>PERENNIALS</b>					
am		ALLIUM X 'MILLENIUM'	ORNAMENTAL ONION	50cm	1 GAL.
ep		ECHINACEA PURPUREA 'GREEN JEWEL'	GREEN JEWEL CONEFLOWER	60cm	1 GAL.
rd		RUDBECKIA HIRTA	BLACK-EYED SUSAN	60cm	1 GAL.
ho		HOSTA 'AUGUST MOON'	AUGUST MOON HOSTA	45cm	1 GAL.
hg		HOSTA 'GREAT ARRIVAL'	GREAT ARRIVAL	65cm	1 GAL.
hh		HEMEROCALLIS 'DAD'S BEST WHITE'	DAD'S BEST WHITE	60cm	1 GAL.
hj		HEMEROCALLIS 'JOAN SENIOR'	JOAN SENIOR DAYLILY	60cm	1 GAL.
sm		SEDUM 'MAESTRO'	MAESTRO STONECROP	60cm	1 GAL.
<b>GROUNDCOVERS</b>					
ou		ARCTOSTAPHYLOS UVA-URSI	REARBERRY	30cm	1 GAL.
btd		BUNCHBERRY DOGWOOD	CORNUS CANADENSIS	30cm	1 GAL.
ca		CANADA ANEMONE	AMENONE CANADAENSIS	30cm	1 GAL.
fg		FRAGARIA VIRGINIANA	WILD STRAWBERRY	15cm	1 GAL.
jh		JUNIPERUS HORIZONTALIS 'BLUE CHIP'	BLUE CHIP JUNIPER	30cm	1 GAL.
js		JUNIPERUS SABINA 'ARCADIA'	ARCADIA JUNIPER	30cm	1 GAL.
vs		VIOLA SORORIA	BLUE VIOLET	20cm	1 GAL.

Contractor shall check all dimensions on the work and report any discrepancy to the Landscape Architect before proceeding. All drawings and specifications are the property of the Landscape Architect and must be returned at the completion of the work. This drawing is not to be used for construction until signed by the Landscape Architect.



**LEGEND**

- PROPERTY LINE
- POST AND RAIL FENCE
- 1.5m ORNAMENTAL FENCE
- 1.8m PRIVACY FENCE
- 1.8m GARBAGE ENCLOSURE FENCE

**PLANTING**

- LARGE DECIDUOUS TREE
- MEDIUM DECIDUOUS TREE
- SMALL DECIDUOUS TREE
- TREEFORM SHRUB
- CONIFEROUS TREE
- DECIDUOUS SHRUB
- CONIFEROUS SHRUB
- PERENNIALS & ORNAMENTAL GRASSES
- GROUNDCOVER
- SOD

**SURFACING**

- RIVER STONE
- UNIT PAVERS LIGHT DUTY PAVING
- CIP CONCRETE LIGHT DUTY PAVING
- ASPHALT LIGHT DUTY PAVING
- ASPHALT LIGHT DUTY PAVING WITH UNIT PAVER BORDER

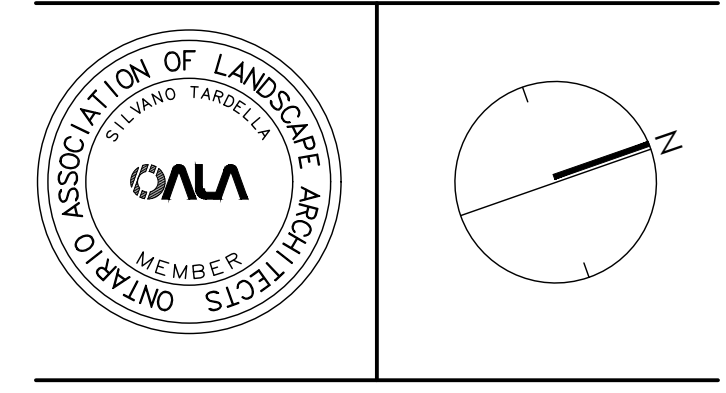
**AMENITIES**

- BENCH
- GRANITE SEATING BOULDERS
- CONTEMPORARY TRELLIS
- WASTE RECEPTACLE

**DETAIL KEY**

- DETAIL NO.
- SHEET NO.

2	Issued for First Submission	July 15/22
1	Issued for client review	July 8/22
No.	Description	Date
Revision		
City Approval Stamp		



**NAK** design strategies

1285 WELLINGTON STREET, OTTAWA, ON K1T 3A8 CANADA  
 T 613.237.2345 F 613.237.6423 NAKDESIGNSTRATEGIES.COM

Project

**MINTO COMMUNITIES**  
**ARCADIA**  
 STAGE 6

Title

LANDSCAPE PLAN

Date JULY 2022 Sheet

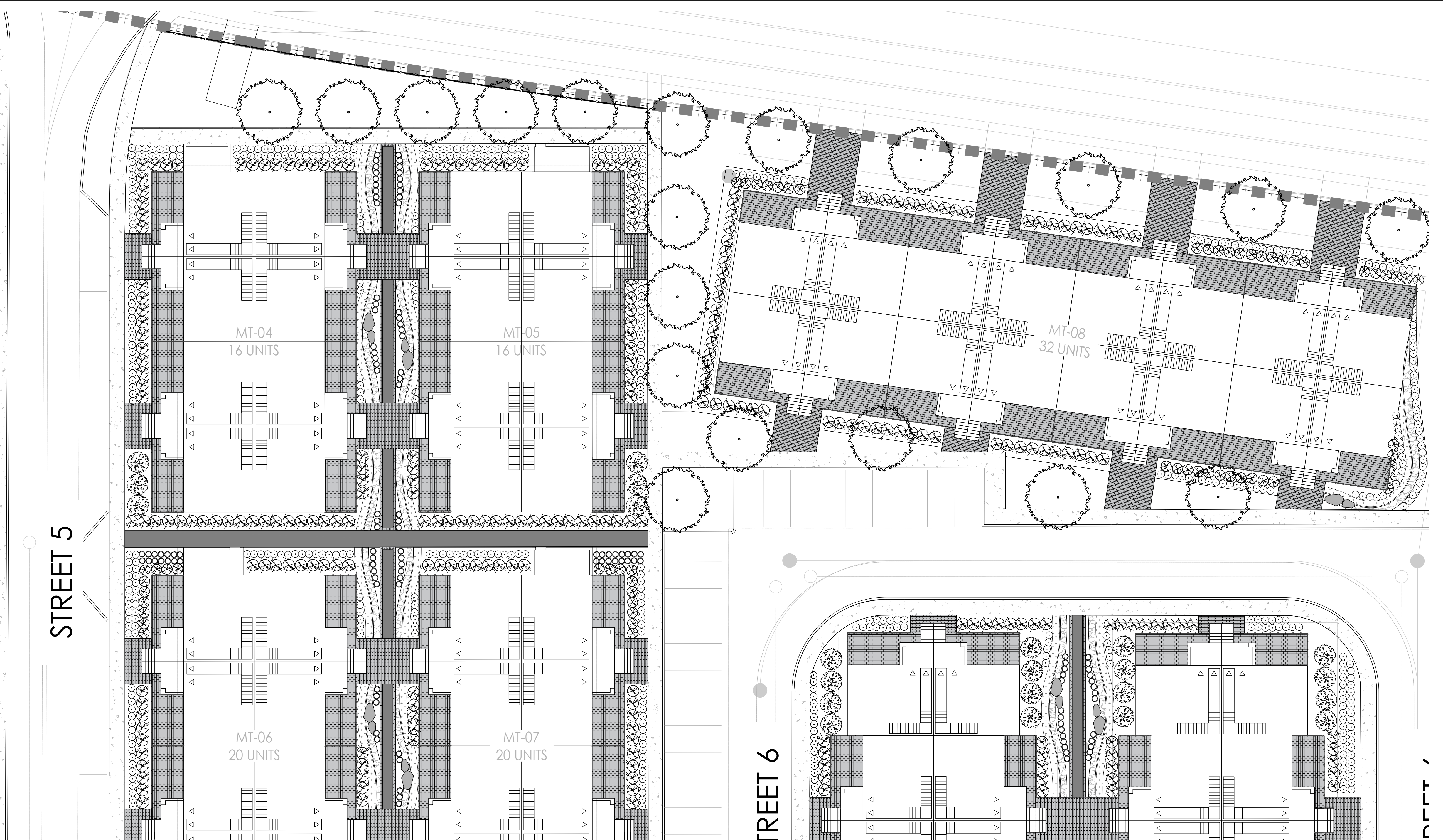
Scale 1:200

Drawn SH

Checked MK

Job No. 21-089

L-06



**TREE PLANTING IN MARINE CLAY SOILS**

- THIS LANDSCAPE PLAN CONFORMS WITH THE TREE-TO-FOUNDATION SETBACK, SOIL VOLUME, AND SURFACE-GRADING REQUIREMENTS OUTLINED IN THE CITY OF OTTAWA'S GUIDELINES FOR TREE PLANTING IN SENSITIVE MARINE CLAY SOILS (2017), BASED ON THE FINDINGS OUTLINED IN THE PROJECT GEOTECHNICAL REPORT.
- ADDITIONAL REQUIREMENTS OUTLINED IN THE CITY OF OTTAWA'S GUIDELINES FOR TREE PLANTING IN SENSITIVE MARINE CLAY SOILS (2017), INCLUDING USE DEPTH, FOUNDATION WALL REINFORCEMENT, AND SUBDIVISION GRADING, SHOULD BE CONFIRMED BY THE PROJECT ENGINEER(S).
- THE CONTRACTOR SHOULD REPORT ANY DISCREPANCIES TO THE CONTRACT ADMINISTRATOR BEFORE PLANTING TREES.
- CITY OF OTTAWA: GUIDELINES FOR TREE PLANTING IN SENSITIVE MARINE CLAY SOILS (2017): THE FOLLOWING GUIDELINES ARE PRIMARILY FOCUSED ON SMALL AND MEDIUM SIZE STREET TREES. HOWEVER, LARGE TREES (MATURE HEIGHT OVER 14M) CAN STILL BE PLANTED IN AREAS OF SMC SOILS PROVIDED A TREE TO FOUNDATION SETBACK EQUAL TO THE FULL MATURE HEIGHT OF THE TREE CAN BE PROVIDED (E.G. IN A PARK OR OTHER GREEN SPACE). FOR STREET TREES IN THE ROAD RIGHT-OF-WAY WHERE SMC SOILS HAVE BEEN IDENTIFIED, THE TREE TO FOUNDATION SETBACKS MAY BE REDUCED TO 4.5M FOR SMALL (MATURE TREE HEIGHT UP TO 7.5M) AND MEDIUM SIZE TREES (MATURE TREE HEIGHT 7.5M-14M) PROVIDED ALL OF THE FOLLOWING SIX CONDITIONS ARE MET:
  - THE MODIFIED PLASTICITY INDEX OF THE SOIL BETWEEN THE UNDERSIDE OF FOOTING (USF) AND A DEPTH OF 3.5M GENERALLY DOES NOT EXCEED 40%. THIS CORRESPONDS TO SOILS WITH LOW/MEDIUM POTENTIAL FOR SOIL VOLUME CHANGE. CLAY SOILS THAT EXCEED THE 40% PLASTICITY INDEX ARE CONSIDERED TO HAVE HIGH POTENTIAL FOR SOIL VOLUME CHANGE. FOR THESE WORST-CASE SOILS, THE SETBACKS AND TREE PLANTING RESTRICTIONS REMAIN UNCHANGED FROM THE 2005 CLAY SOILS POLICY (TREE SETBACK MUST EQUAL THE MATURE HEIGHT OF THE TREE - I.E. 7.5M SETBACK FOR SMALL TREES).
  - THE USF IS 2.1M OR GREATER BELOW THE LOWEST FINISHED GRADE. NOTE: THIS FOOTING LEVEL MUST BE SATISFIED FOR FOOTINGS WITHIN 10M OF THE TREE, AS MEASURED FROM THE CENTRE OF THE TREE TRUNK, AND VERIFIED BY MEANS OF THE GRADING PLAN AS INDICATED IN THE PROCEDURAL CHANGES BELOW.
  - A SMALL SIZE TREE MUST BE PROVIDED WITH A MINIMUM OF 25M<sup>3</sup> OF AVAILABLE SOIL VOLUME, AS DETERMINED BY A LANDSCAPE ARCHITECT. A MEDIUM SIZE TREE MUST BE PROVIDED WITH A MINIMUM OF 30M<sup>3</sup> OF AVAILABLE SOIL VOLUME, AS DETERMINED BY A LANDSCAPE ARCHITECT. THE DEVELOPER WILL ENSURE THE SOIL IS GENERALLY UNCOMPACTED WHEN BACKFILLING IN STREET TREE PLANTING LOCATIONS.

NOTE: THE SOIL VOLUME CALCULATION MUST BE BASED ON A DEPTH OF 1.5M BELOW FINISHED GRADE (E.G. 5M LENGTH X 4M WIDTH AT SURFACE X 1.5M DEPTH = 30M<sup>3</sup>). IT MAY INCLUDE LANDS IN THE RIGHT-OF-WAY AND ON PRIVATE PROPERTY, BUT MUST SUBTRACT THE VOLUME OF SHALLOW UTILITY TRENCHES (I.E. VOLUME OF SHALLOW UTILITY TRENCHES CANNOT COUNT TOWARDS MINIMUM SOIL VOLUME).

**PLANT LIST**

KEY	QTY.	BOTANICAL NAME	COMMON NAME	CAL/HT. (mm)	ROOT
<b>LARGE DECIDUOUS TREES (15-30m)</b>					
AS		ACER SACCHARUM	SUGAR MAPLE	50	B&B
GS		GLIEDISIA TRIMACANTHOS VAR. INERMIS	HONEYLOCUST	50	B&B
QR		QUERCUS RUBRA	RED OAK	50	B&B
TA		TILIA AMERICANA	BASSWOOD	50	B&B
<b>MEDIUM DECIDUOUS TREES (7.5m-14m)</b>					
AR		ACER X FREEMANNI 'ARMSTRONG'	ARMSTRONG MAPLE	60	B&B
PA		PYRUS CALLERYANA 'CAPITAL'	CAPITAL PEAR	60	B&B
SH		SORBUS X HYBRIDA	MOUNTAIN-ASH	60	B&B
SR		SYRINGA RETICULATA	JAPANESE LILAC	60	B&B
TM		TILIA MONGOLICA	MONGOLIAN LINDEN	60	B&B
<b>TREEFORM SHRUBS</b>					
Ed		CORNUS KOUSA 'SATOUM'	SATOUMI FLOWERING DOGWOOD	175cm	TREEFORM
Ec		EUKONTMIS ALATUS 'COMPACTUS'	DWARF BURNING BUSH	150cm	TREEFORM
Pc		PRUNUS X CISTENA	PURPLE-LEAF SAND CHERRY	175cm	TREEFORM
<b>CONIFEROUS TREES</b>					
PP		PICEA PUNGENS 'AVATAR'	AVATAR BLUE SPRUCE	500cm	B&B
PS		PINUS STROBUS	WHITE PINE	500cm	B&B
<b>DECIDUOUS SHRUBS</b>					
CT		CORNUS SERICEA 'FARROW'	ARCTIC FIRE DOGWOOD	175cm	3 GAL.
Cs		CORNUS SERICEA	RED ORIER DOGWOOD	200cm	3 GAL.
ET		EUKONTMIS ALATUS 'FIREBALL'	FIREBALL BURNING BUSH	175cm	3 GAL.
Rr		ROSA RUGOSA 'ALBA'	RUGOSA ROSE	175cm	3 GAL.
PO		PHYSICARPUS OPULIFOLIUS 'DIABOLO'	DIABOLO NINEBARK	175cm	3 GAL.
Pv		PHILADELPHUS X VIRGINIANUS	MORCK ORANGE	175cm	3 GAL.
<b>CONIFEROUS SHRUBS</b>					
Pm		PINUS MUGO VAR. PUMILIO	DWARF MUGO VAR. PUMILIO	125cm	3 GAL.
Jc		TAXUS CUSPIDATA AURESCENS	DWARF GOLDEN JAPANESE YEW	100cm	3 GAL.
Ts		TSUGA CANADENSIS 'MOON FROST'	MOONFROST CANADIANHEMLOCK	100cm	3 GAL.
<b>GRASSES</b>					
cm		CAREX MORROWII 'ICE DANCE'	ICE DANCE SEDGE	30cm	1 GAL.
ca		CALAMAGROSTIS X ACUTIFLORA 'KARL FOERSTER'	KARL FOERSTER REED GRASS	150cm	1 GAL.
dc		DESCHAMPSIA CESPIITOSA	TUFTED HAIR GRASS	100cm	1 GAL.
mc		MOULINIA CAERULEA 'VARIEGATA'	VARIEGATED PURPLE MOOR GRASS	70cm	1 GAL.

0 5m 10m 20m 50m

SCALE 1:200

PERENNIALS	ORNAMENTAL ONION	30cm	1 GAL.
am	ALLIUM X 'MILLENIUM'	60cm	1 GAL.
em	ECHINACEA PURPUREA 'GREEN JEWEL'	60cm	1 GAL.
rd	RUDBECKIA HIRTIA	45cm	1 GAL.
hd	HOSTA 'AUGUST MOON'	65cm	1 GAL.
hg	HOSTA 'GREAT ARRIVAL'	60cm	1 GAL.
hh	HEMEROCALLIS 'DAD'S BEST WHITE'	40cm	1 GAL.
hj	HEMEROCALLIS 'JOAN SENIOR'	60cm	1 GAL.
sm	SEDUM 'MAESTRO'	60cm	1 GAL.
<b>GROUNDCOVERS</b>			
ou	ARCTOSTAPHYLOS UVA-URSI	30cm	1 GAL.
bd	BUNCHBERRY DOGWOOD	30cm	1 GAL.
ca	CANADA ANEMONE	30cm	1 GAL.
fg	FRAGARIA VIRGINIANA	15cm	1 GAL.
Jh	JUNIPERUS HORIZONTALIS 'BLUE CHIP'	30cm	1 GAL.
js	JUNIPERUS SABINA 'ARCADIA'	30cm	1 GAL.
vs	VIOLA SORORIA	20cm	1 GAL.
br	BEARBERRY	30cm	1 GAL.
cn	CORNUS CANADENSIS	30cm	1 GAL.
ca	AMENONE CANADENSIS	30cm	1 GAL.
ws	WILD STRAWBERRY	15cm	1 GAL.
bc	BLUE CHIP JUNIPER	30cm	1 GAL.
aj	ARCADIA JUNIPER	30cm	1 GAL.
bv	BLUE VIOLET	20cm	1 GAL.

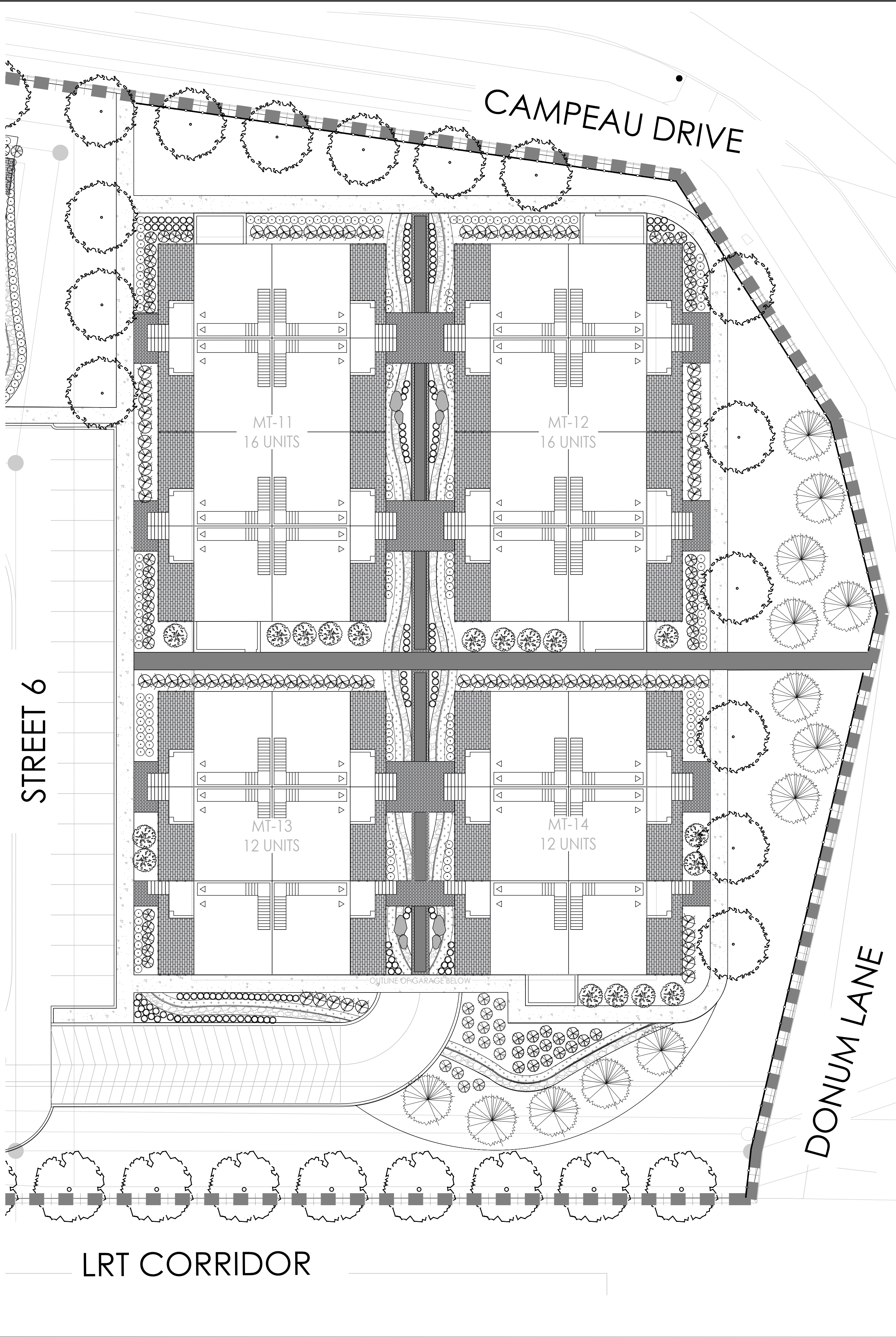
**TREE PLANTING IN MARINE CLAY SOILS**

- THIS LANDSCAPE PLAN CONFORMS WITH THE TREE-TO-FOUNDATION SETBACK, SOIL VOLUME, AND SURFACE-GRADING REQUIREMENTS OUTLINED IN THE CITY OF OTTAWA'S GUIDELINES FOR TREE PLANTING IN SENSITIVE MARINE CLAY SOILS (2017), BASED ON THE FINDINGS OUTLINED IN THE PROJECT GEOTECHNICAL REPORT.
- ADDITIONAL REQUIREMENTS OUTLINED IN THE CITY OF OTTAWA'S GUIDELINES FOR TREE PLANTING IN SENSITIVE MARINE CLAY SOILS (2017), INCLUDING USE DEPTH, FOUNDATION WALL REINFORCEMENT, AND SUBDIVISION GRADING, SHOULD BE CONFIRMED BY THE PROJECT ENGINEER(S).
- THE CONTRACTOR SHOULD REPORT ANY DISCREPANCIES TO THE CONTRACT ADMINISTRATOR BEFORE PLANTING TREES.
- CITY OF OTTAWA: GUIDELINES FOR TREE PLANTING IN SENSITIVE MARINE CLAY SOILS (2017); THE FOLLOWING GUIDELINES ARE PRIMARILY FOCUSED ON SMALL AND MEDIUM SIZE STREET TREES. HOWEVER, LARGE TREES (MATURE HEIGHT OVER 14M) CAN STILL BE PLANTED IN AREAS OF SMC SOILS PROVIDED A TREE TO FOUNDATION SETBACK EQUAL TO THE FULL MATURE HEIGHT OF THE TREE CAN BE PROVIDED (E.G. IN A PARK OR OTHER GREEN SPACE). FOR STREET TREES IN THE ROAD RIGHT-OF-WAY WHERE SMC SOILS HAVE BEEN IDENTIFIED, THE TREE TO FOUNDATION SETBACKS MAY BE REDUCED TO 4.5M FOR SMALL (MATURE TREE HEIGHT UP TO 7.5M) AND MEDIUM SIZE TREES (MATURE TREE HEIGHT 7.5M-14M) PROVIDED ALL OF THE FOLLOWING SIX CONDITIONS ARE MET:

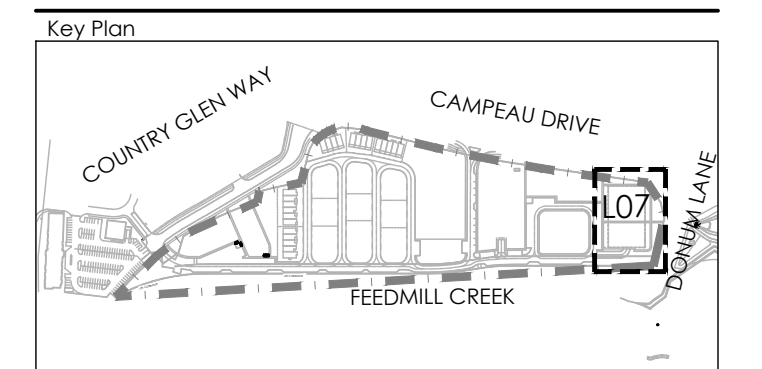
- THE MODIFIED PLASTICITY INDEX OF THE SOIL BETWEEN THE UNDERSIDE OF FOOTING (USF) AND A DEPTH OF 3.5M GENERALLY DOES NOT EXCEED 40%. THIS CORRESPONDS TO SOILS WITH LOW/MEDIUM POTENTIAL FOR SOIL VOLUME CHANGE. CLAY SOILS THAT EXCEED THE 40% PLASTICITY INDEX ARE CONSIDERED TO HAVE HIGH POTENTIAL FOR SOIL VOLUME CHANGE. FOR THESE WORST-CASE SOILS, THE SETBACKS AND TREE PLANTING RESTRICTIONS REMAIN UNCHANGED FROM THE 2005 CLAY SOILS POLICY (TREE SETBACK MUST EQUAL THE MATURE HEIGHT OF THE TREE - I.E. 7.5M SETBACK FOR SMALL TREES).
- THE USF IS 2.1M OR GREATER BELOW THE LOWEST FINISHED GRADE. NOTE: THIS FOOTING LEVEL MUST BE SATISFIED FOR FOOTINGS WITHIN 10M OF THE TREE, AS MEASURED FROM THE CENTRE OF THE TREE TRUNK, AND VERIFIED BY MEANS OF THE GRADING PLAN AS INDICATED IN THE PROCEDURAL CHANGES BELOW.
- A SMALL SIZE TREE MUST BE PROVIDED WITH A MINIMUM OF 25M<sup>3</sup> OF AVAILABLE SOIL VOLUME, AS DETERMINED BY A LANDSCAPE ARCHITECT. A MEDIUM SIZE TREE MUST BE PROVIDED WITH A MINIMUM OF 30M<sup>3</sup> OF AVAILABLE SOIL VOLUME, AS DETERMINED BY A LANDSCAPE ARCHITECT. THE DEVELOPER WILL ENSURE THE SOIL IS GENERALLY UNCOMPACTED WHEN BACKFILLING IN STREET TREE PLANTING LOCATIONS.  
NOTE: THE SOIL VOLUME CALCULATION MUST BE BASED ON A DEPTH OF 1.5M BELOW FINISHED GRADE (E.G. 5M LENGTH X 4M WIDTH AT SURFACE X 1.5M DEPTH = 30M<sup>3</sup>). IT MAY INCLUDE LANDS IN THE RIGHT-OF-WAY AND ON PRIVATE PROPERTY, BUT MUST SUBTRACT THE VOLUME OF SHALLOW UTILITY TRENCHES (I.E. VOLUME OF SHALLOW UTILITY TRENCHES CANNOT COUNT TOWARDS MINIMUM SOIL VOLUME).

**PLANT LIST**

KEY	QTY.	BOTANICAL NAME	COMMON NAME	CAL./HT. (mm)	ROOT
<b>LARGE DECIDUOUS TREES (15-30m)</b>					
AR		ACER X FREEMANNI 'ARMSTRONG'	SUGAR MAPLE	50	B&B
AS		ACER SACCHARUM	HONEYLOCUST	50	B&B
CS		CLEOSTMA TRIACANTHOS VAR. INERMIS	RED OAK	50	B&B
QR		QUERCUS RUBRA	BASSWOOD	50	B&B
TA		TILIA AMERICANA			
<b>MEDIUM DECIDUOUS TREES (7.5m-14m)</b>					
AR		ACER X FREEMANNI 'ARMSTRONG'	ARMSTRONG MAPLE	40	B&B
PA		PRUNUS CALLERYANA 'CAPITAL'	CAPITAL PEAR	40	B&B
SH		SORBUS X HYBRIDA	MOUNTAIN-ASH	40	B&B
SR		SYRINGA RETICULATA	JAPANESE LILAC	40	B&B
TM		TILIA MONGOLICA	MONGOLIAN LINDEN	40	B&B
<b>TREEFORM SHRUBS</b>					
Ea		EUONYMUS ALATUS 'COMPACTUS'	SATOMI FLOWERING DOGWOOD	175cm	TREEFORM
Pc		PRUNUS X CISTENA	DWARF BURNING BUSH	150cm	TREEFORM
			PURPLE-LEAF SAND CHERRY	175cm	TREEFORM
<b>CONIFEROUS TREES</b>					
PP		PICEA PUNGENS 'AVATAR'	AVATAR BLUE SPRUCE	500cm	B&B
PS		PINUS STROBUS	WHITE PINE	500cm	B&B
<b>DECIDUOUS SHRUBS</b>					
CT		CORNUS SERICEA 'TARROW'	ARCTIC FIRE DOGWOOD	175cm	3 GAL.
Cs		CORNUS SERICEA	RED OSIER DOGWOOD	200cm	3 GAL.
Ef		EUONYMUS ALATUS 'FIREBALL'	FIREBALL BURNING BUSH	175cm	3 GAL.
Rr		ROSA RUGOSA 'ALBA'	RUGOSA ROSE	175cm	3 GAL.
Po		PHYSOCARPUS OPIULIFOLIUS 'DIABOLO'	DIABOLO INEBARK	175cm	3 GAL.
Pv		PHILADELPHUS X VIRGINIALIS	MOCK ORANGE	175cm	3 GAL.
<b>CONIFEROUS SHRUBS</b>					
Pm		PRUNUS MUGO VAR. PUMILIO	DWARF MUGO VAR. PUMILIO	125cm	3 GAL.
Js		TAXUS CUSPIDATA AURESCENS	DWARF GOLDEN JAPANESE YEW	100cm	3 GAL.
Tc		TSUGA CANADENSIS 'MOON FROST'	MOONFROST CANADIANHEMLOCK	100cm	3 GAL.
<b>GRASSES</b>					
cm		CAREX MORROWII 'ICE DANCE'	ICE DANCE SEDGE	30cm	1 GAL.
cs		CALAMAGROSTIS X ACUTIFLORA 'KARL FOERSTER'	KARL FOERSTER REED GRASS	150cm	1 GAL.
dc		DESCHAMPSIA CESPITOSA	TIFTED HAIR GRASS	100cm	1 GAL.
mc		MOLINIA CAERULEA 'VARIEGATA'	VARIEGATED PURPLE MOOR GRASS	70cm	1 GAL.
<b>PERENNIALS</b>					
am		ALLIUM X MILLENIUM'	ORNAMENTAL ONION	50cm	1 GAL.
ep		ECHINACEA PURPUREA 'GREEN JEWEL'	GREEN JEWEL CONEFLOWER	45cm	1 GAL.
rd		RUDBECKIA HIRTA	BLACK-EYED SUSAN	60cm	1 GAL.
ho		HOSTA 'AUGUST MOON'	AUGUST MOON HOSTA	45cm	1 GAL.
hg		HOSTA 'GREAT ARRIVAL'	GREAT ARRIVAL	65cm	1 GAL.
hh		HEMEROCALLIS 'DAD'S BEST WHITE'	DAD'S BEST WHITE	60cm	1 GAL.
hj		HEMEROCALLIS 'JOAN SENIOR'	JOAN SENIOR DAYLILY	60cm	1 GAL.
sm		SEDUM 'MAESTRO'	MAESTRO STONECROP	60cm	1 GAL.
<b>GROUNDCOVERS</b>					
ou		ARCTOSTAPHYLOS UVA-URSI	BEARBERRY	30cm	1 GAL.
bd		BUNCHBERRY DOGWOOD	CORNUS CANADENSIS	30cm	1 GAL.
cc		CANADA ANEMONE	AMYONE CANADENSIS	30cm	1 GAL.
fg		FRAGARIA VIRGINIANA	WILD STRAWBERRY	15cm	1 GAL.
jh		JUNIPERUS HORIZONTALIS 'BLUE CHIP'	BLUE CHIP JUNIPER	30cm	1 GAL.
js		JUNIPERUS SABINA 'ARCADIA'	ARCADIA JUNIPER	30cm	1 GAL.
vs		VIOLA SORORIA	BLUE VIOLET	20cm	1 GAL.



Contractor shall check all dimensions on the work and report any discrepancy to the Landscape Architect before proceeding. All drawings and specifications are the property of the Landscape Architect and must be returned at the completion of the work. This drawing is not to be used for construction until signed by the Landscape Architect.



**LEGEND**

- PROPERTY LINE
- POST AND RAIL FENCE
- 1.5m ORNAMENTAL FENCE
- 1.8m PRIVACY FENCE
- 1.8m GARBAGE ENCLOSURE FENCE

**PLANTING**

- LARGE DECIDUOUS TREE
- MEDIUM DECIDUOUS TREE
- SMALL DECIDUOUS TREE
- TREEFORM SHRUB
- CONIFEROUS TREE
- DECIDUOUS SHRUB
- CONIFEROUS SHRUB
- PERENNIALS & ORNAMENTAL GRASSES

**SURFACING**

- GROUNDCOVER
- SOD
- RIVER STONE
- UNIT PAVERS LIGHT DUTY PAVING
- CIP CONCRETE LIGHT DUTY PAVING
- ASPHALT LIGHT DUTY PAVING
- ASPHALT LIGHT DUTY PAVING WITH UNIT PAVER BORDER

**AMENITIES**

- BENCH
- GRANITE SEATING BOULDERS
- CONTEMPORARY TRELLIS
- WASTE RECEPTACLE

**DETAIL KEY**

- DETAIL NO.
- SHEET NO.

2	Issued for First Submission	July 15/22
1	Issued for client review	July 8/22
No.	Description	Date
Revision		
City Approval Stamp		

**NAK design strategies**

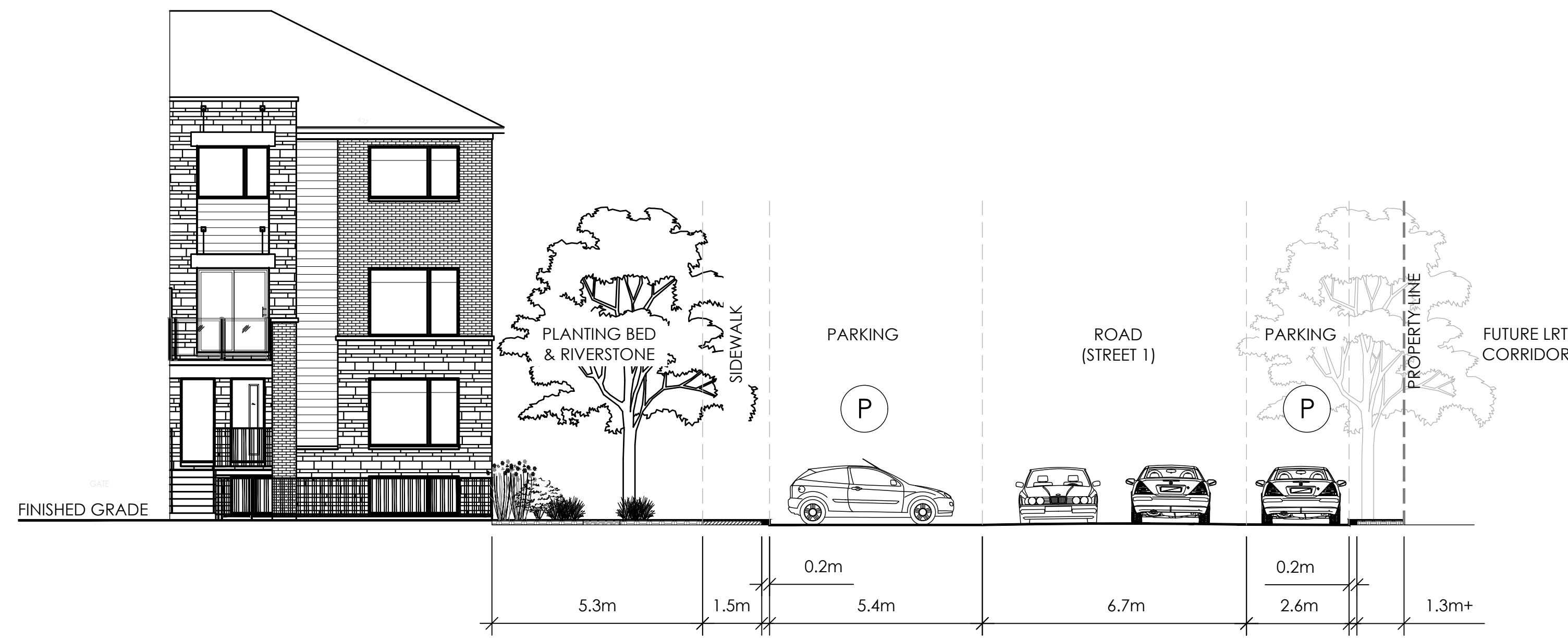
1285 WELLINGTON STREET, OTTAWA, ON K1Y 3A8 CANADA  
 T 613.237.2345 F 613.237.6423 NAKDESIGNSTRATEGIES.COM

MINTO COMMUNITIES  
 ARCADIA  
 STAGE 6

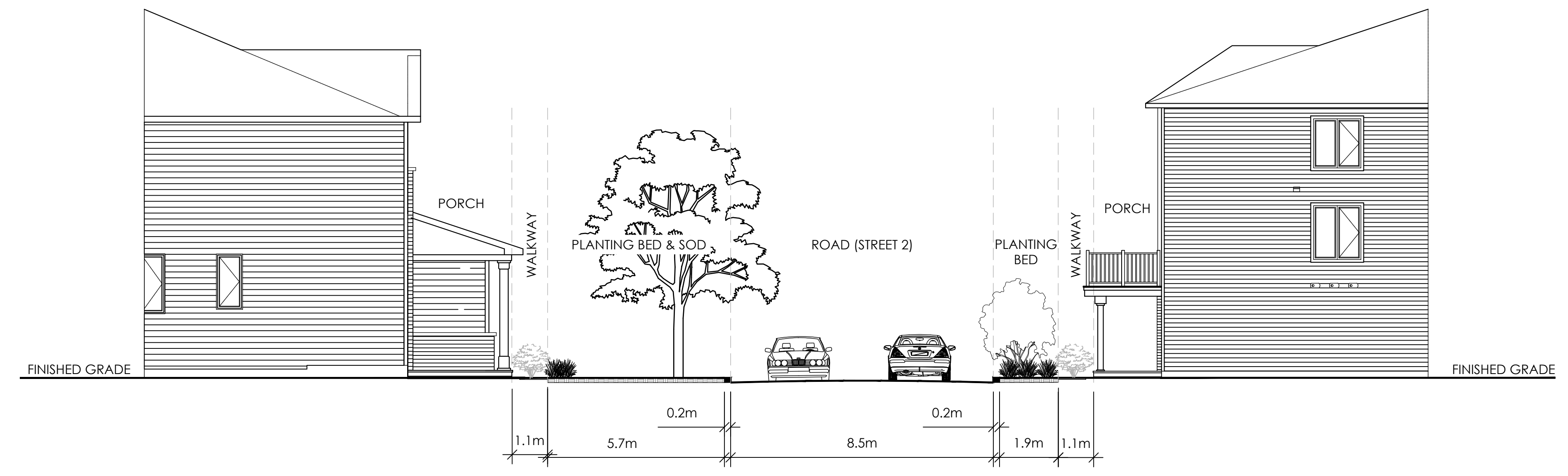




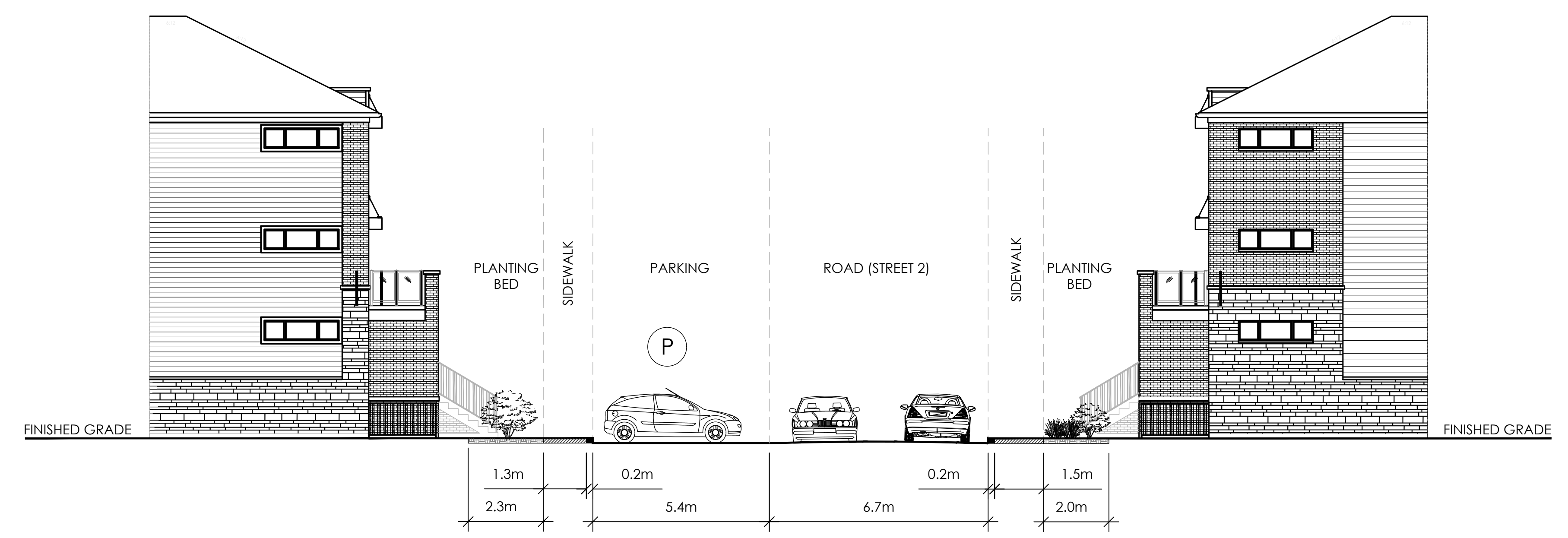
Contractor shall check all dimensions on the work and report any discrepancy to the Landscape Architect before proceeding. All drawings and specifications are the property of the Landscape Architect and must be returned at the completion of the work. This drawing is not to be used for construction until signed by the Landscape Architect.



1 CROSS SECTION  
1:100

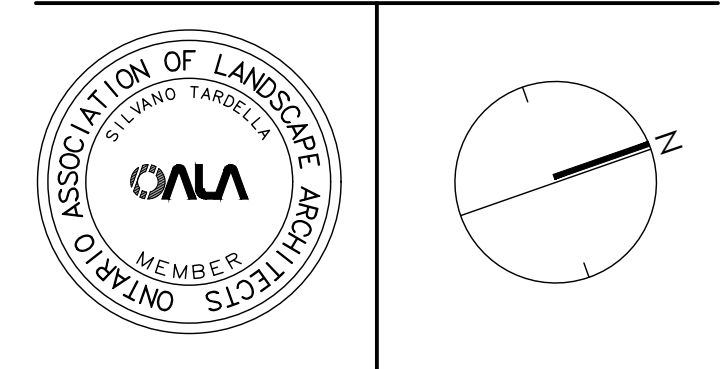


2 CROSS SECTION  
1:100



3 CROSS SECTION  
1:100

No.	Description	Date
2	Issued for First Submission	July 15/22
1	Issued for client review	July 8/22
Revision		
City Approval Stamp		



**NAK** design strategies  
 1285 WELLINGTON STREET, OTTAWA, ON K1Y 3A8 CANADA  
 T 613.237.2345 F 613.237.6423 [NAKDESIGNSTRATEGIES.COM](http://NAKDESIGNSTRATEGIES.COM)

MINTO COMMUNITIES  
 ARCADIA  
 STAGE 6

Title  
 CROSS SECTIONS

Date JULY 2022  
 Scale 1:100  
 Drawn SH  
 Checked MK  
 Job No. 21-089

Sheet  
**D02**