

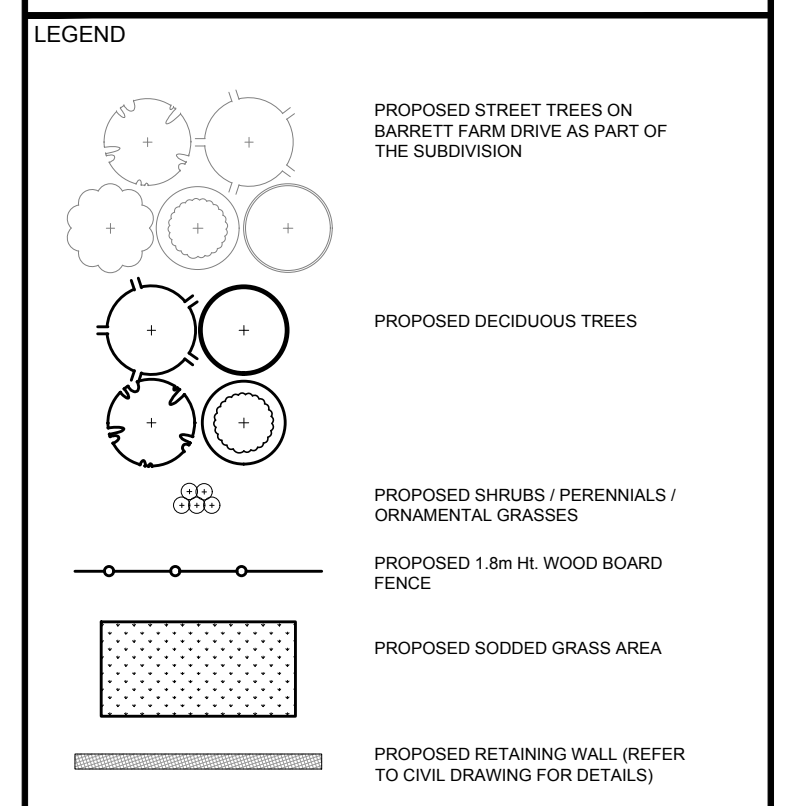
### PROPOSED PLANT LIST

| KEY                                      | QTY | BOTANICAL NAME                    | COMMON NAME             | SIZE         | CONDITION | REMARKS           |
|--|-----|-----------------------------------|-------------------------|--------------|-----------|-------------------|
| <b>TREES</b>                             |     |                                   |                         |              |           |                   |
| AM                                       | 1   | Acer ginnala                      | Amur Maple              | 60mm cal.    | B&B       |                   |
| HB                                       | 1   | Celtis occidentalis               | Hackberry               | 60mm cal.    | B&B       |                   |
| HL                                       | 1   | Gleditsia triacanthos 'Skyline'   | Skyline Honey Locust    | 60mm cal.    | B&B       |                   |
| RM                                       | 1   | Acer rubrum                       | Red Maple               | 60mm cal.    | B&B       | Native not hybrid |
| SM                                       | 1   | Acer saccharum                    | Sugar Maple             | 60mm cal.    | B&B       |                   |
| <b>SHRUBS</b>                            |     |                                   |                         |              |           |                   |
| AH                                       | 55  | Hydrangea arborescens 'Annabelle' | Annabelle Hydrangea     | 3 gallon pot | Potted    | 1000mm o.c.       |
| BD                                       | 46  | Juniperus sabina 'Blue Danube'    | Blue Danube Juniper     | 600mm spr.   | Potted    | 1000mm o.c.       |
| DW                                       | 11  | Cornus sericea                    | Red Osier Dogwood       | 800mm ht.    | Potted    | 1200mm o.c.       |
| MJ                                       | 13  | Juniperus chinensis 'Monlep'      | Mint Julep Juniper      | 600mm spr.   | Potted    | 1000mm o.c.       |
| RR                                       | 18  | Rosa rugosa                       | Rugosa Rose             | 800mm ht.    | Potted    | 800mm o.c.        |
| <b>PERENNIALS AND ORNAMENTAL GRASSES</b> |     |                                   |                         |              |           |                   |
| DL                                       | 317 | Hemerocallis 'Stella D'oro'       | Stella D'Oro Daylily    | 150mm pot    | Potted    | 400mm o.c.        |
| HM                                       | 100 | Panicum virgatum 'Heavy Metal'    | Heavy Metal Switchgrass | 250mm pot    | Potted    | 800mm o.c.        |
| HO                                       | 94  | Hosta undulata 'Albo Marginata'   | White-Margined Hosta    | 100mm pot    | Potted    | 400mm o.c.        |

CLIENT  
BARRETT  
CO-TENANCY

CONSULTANTS  
CIVIL ENGINEERS: **IBI GROUP**  
333 Preston Street  
Tower 1, Suite 400  
Ottawa, Ontario  
Canada K1S 5N4  
Tel: (613)225-1311  
Fax: (613)225-9888

LOCATION PLAN  
BLOCK 178



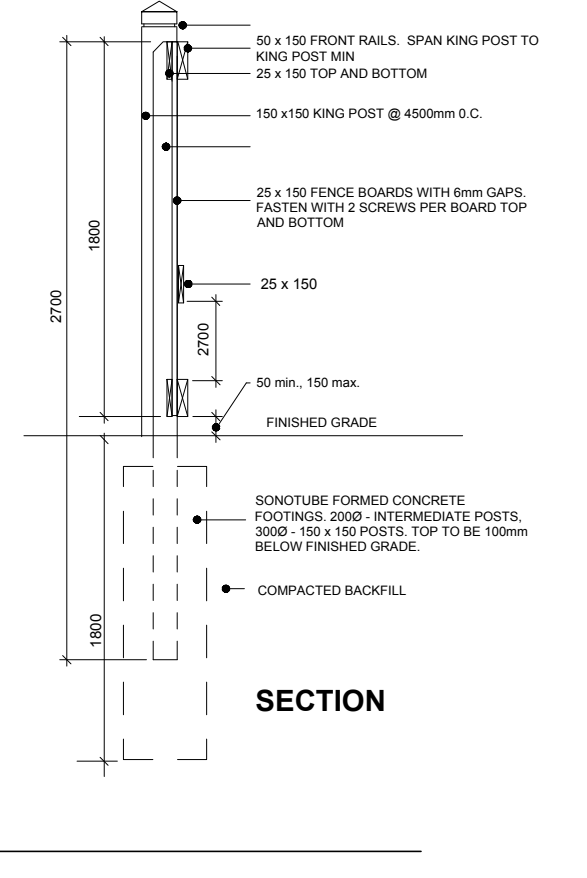
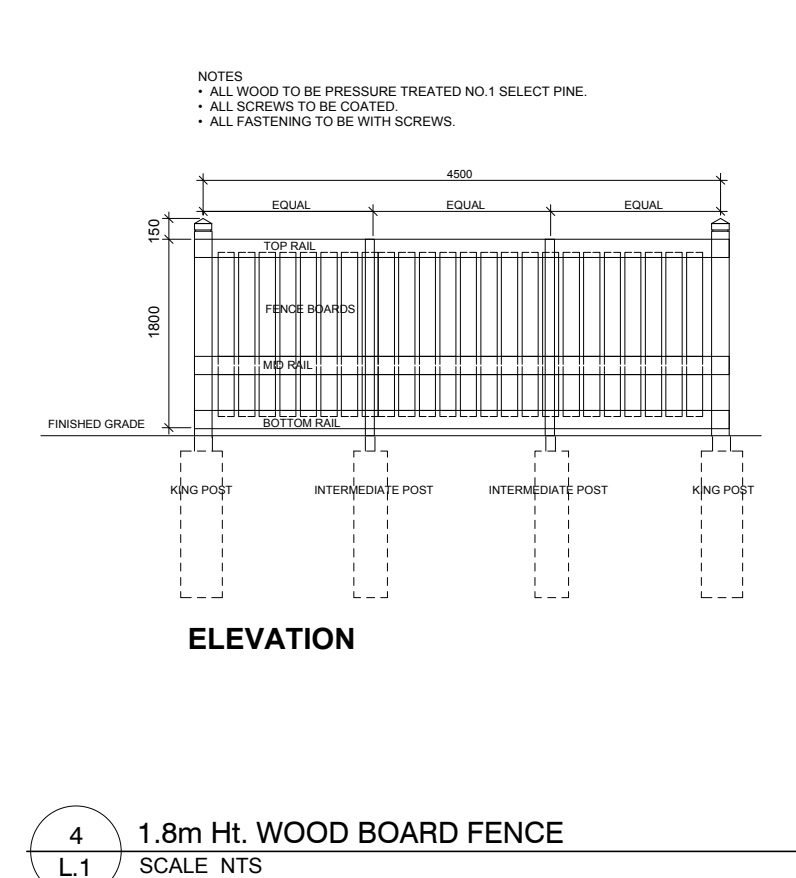
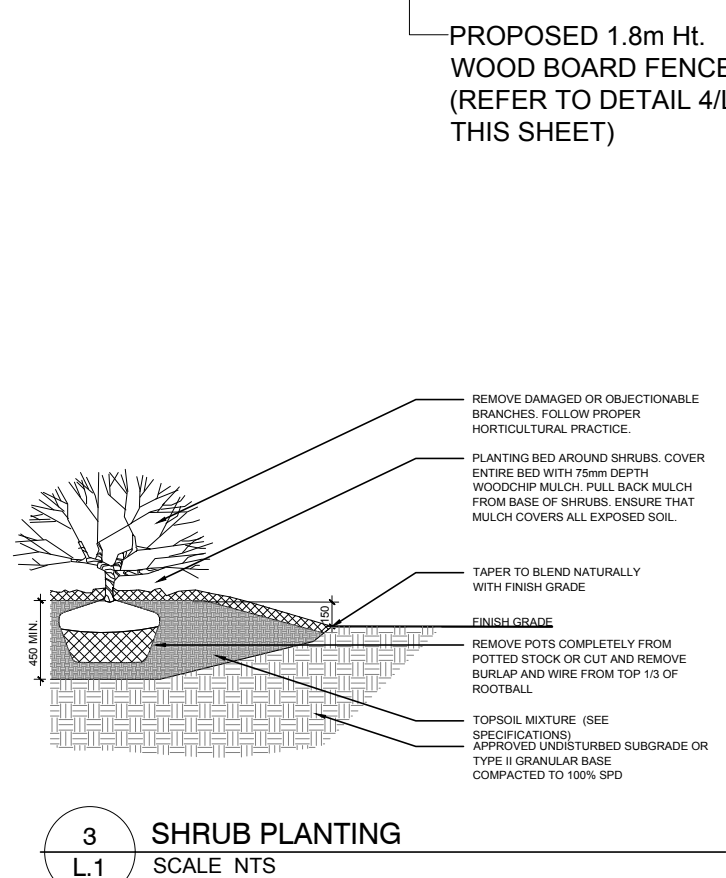
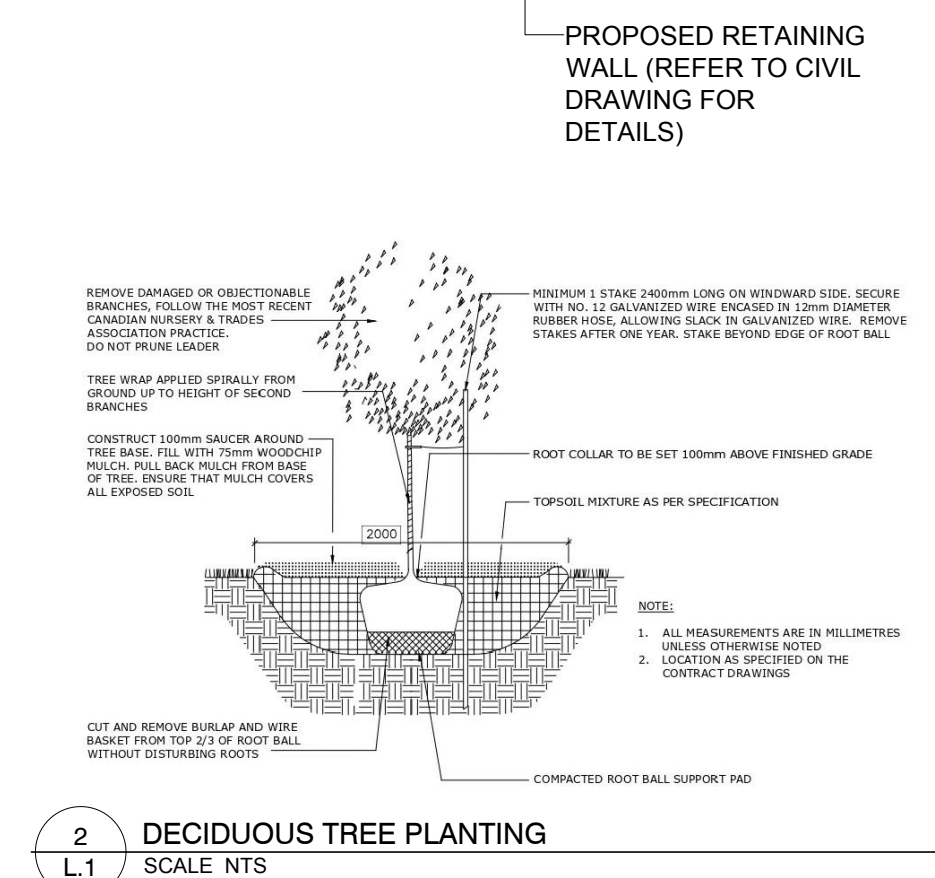
|     |                                  |            |    |    |
|-----|----------------------------------|------------|----|----|
| 2   | ISSUED FOR DISCUSSION AND REVIEW | 07/19/2022 | ML | JL |
| 1   | ISSUED FOR COORDINATION          | 06/15/2022 | LC | JL |
| No. | Issue                            | Date       | DR | CK |
|     |                                  | MM/DD/YYYY |    |    |

**JAMES B. LENNOX & ASSOCIATES INC.**  
LANDSCAPE ARCHITECTS  
3332 CARLING AVE. OTTAWA, ONTARIO K2H 5A8  
Tel. (613) 722-5168 Fax. (866) 343-3942

1 LANDSCAPE PLAN  
SCALE 1:300

- GENERAL NOTES:
- IT IS THE RESPONSIBILITY OF THE APPROPRIATE CONTRACTOR OR OFFICIAL TO REPORT ANY ERRORS, OMISSIONS OR DISCREPANCIES ON THIS PLAN WITH ACTUAL SITE CONDITIONS TO THE LANDSCAPE ARCHITECT BEFORE PROCEEDING WITH CONSTRUCTION.
  - THE CONTRACTOR IS TO NOTIFY ALL UTILITY COMPANIES AND AUTHORITIES PRIOR TO ANY EXCAVATION AND ASCERTAIN LOCATIONS OF UNDERGROUND SERVICES.
  - THE CONTRACTOR IS TO REINSTATE ALL AREAS AND ITEMS DAMAGED AS A RESULT OF CONSTRUCTION ACTIVITY.
  - THE CONTRACTOR IS TO COMPLY WITH ALL PERTINENT CODES AND BY-LAWS.
  - THE CONTRACTOR IS TO MAINTAIN A POSITIVE SURFACE RUN-OFF THROUGHOUT THE ENTIRE CONSTRUCTION PERIOD.
  - THE LANDSCAPE ARCHITECT IS NOT RESPONSIBLE FOR SUBSURFACE CONDITIONS.
  - THE CONTRACTOR IS TO IDENTIFY ALL EXISTING TREES TO REMAIN ON SITE WITH THE LANDSCAPE ARCHITECT PRIOR TO CONSTRUCTION.

- THE CONTRACTOR IS TO STAKE THE PROPOSED LOCATION OF ALL PLANT MATERIAL IN CONJUNCTION WITH THE LANDSCAPE ARCHITECT PRIOR TO EXCAVATION.
- MINIMUM DISTANCES FOR SELECTED DECIDUOUS TREES ARE AS FOLLOWS:
  - BUILDING FOUNDATIONS 7.5M
  - SIDEWALKS AS PER ROW CROSS SECTIONS
  - PUBLIC STREETS/ CURBS AS PER ROW CROSS SECTIONS
  - SERVICE LATERAL 1.5M
  - FIRE HYDRANT 2.0M
  - HYDRO TRANSFORMER 3M
  - STREETLIGHT 5M (2.5M FOR SMALL TREES)
- ALL TREES WITHIN 1M OF UNDERGROUND UTILITY TRENCHES ARE TO BE EXCAVATED BY HAND.
- REMOVE ALL PROTECTIVE WRAPPING FROM TREE TRUNKS AFTER INSTALLATION.
- STAKING OF TREES SHALL ONLY BE PERFORMED IF NECESSARY.
- ENSURE THAT MULCH IS PULLED BACK A MIN. DISTANCE OF 75MM FROM BASE OF TREE TRUNK.



PROJECT  
BARRETT BLOCK 178

DRAWING  
LANDSCAPE PLAN

STAMP  
ASSOCIATION OF LANDSCAPE ARCHITECTS  
MEMBER  
JBL

PROJECT NORTH

SCALE  
AS SHOWN

START DATE  
JUNE, 2022

PROJECT NO.

DRAWING NO.  
**L.1**

PLOT SIZE ARCH-D