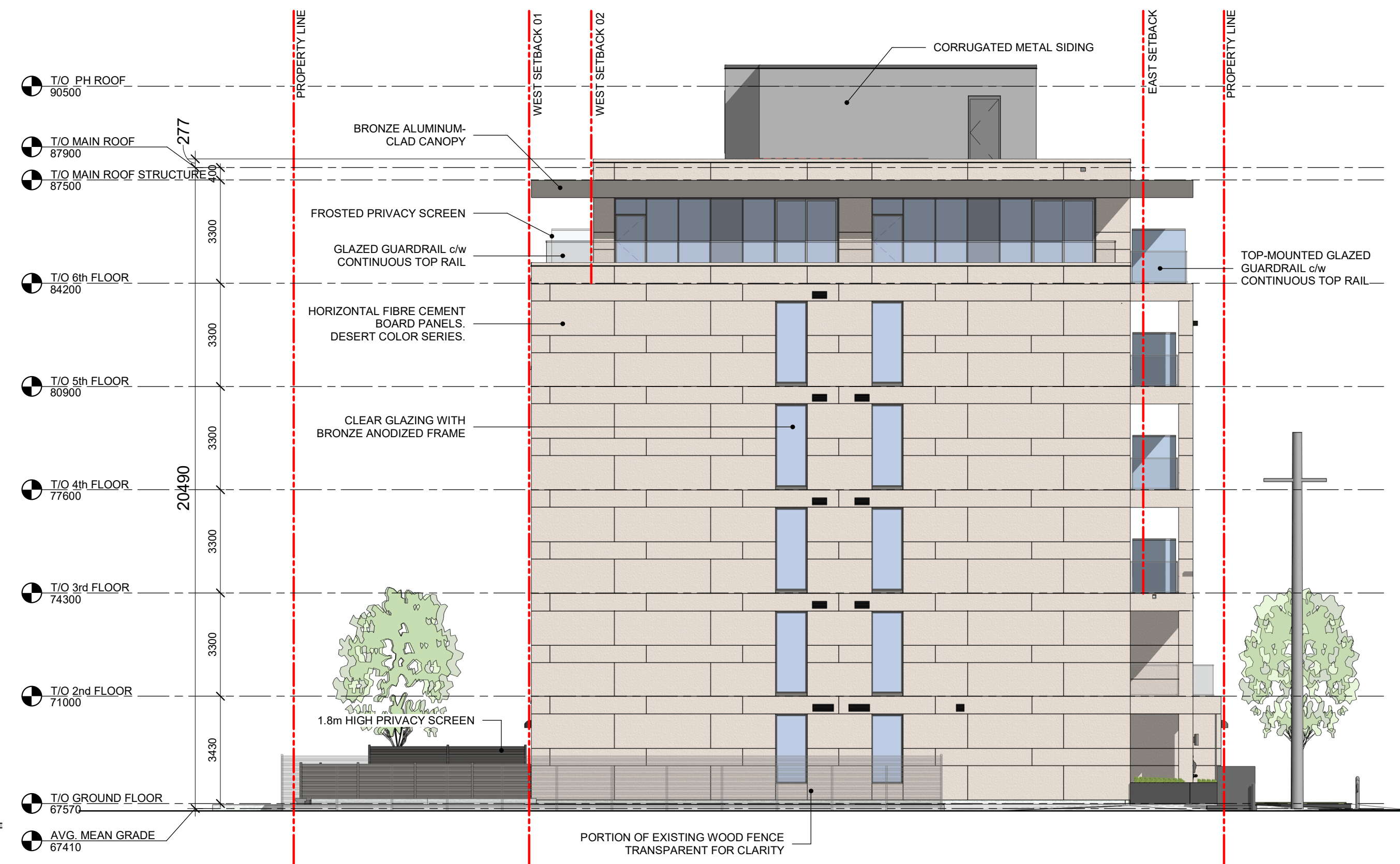


EAST
ELEVATION



WEST
ELEVATION



SOUTH
ELEVATION



NORTH
ELEVATION

Andrew McCreight
ANDREW MCCREIGHT
MANAGER (A), DEVELOPMENT REVIEW CENTRAL
PLANNING, REAL ESTATE & ECONOMIC DEVELOPMENT
DEPARTMENT, CITY OF OTTAWA

APPROVED
By Andrew McCreight at 9:18 pm, Jul 18, 2022

IT IS THE RESPONSIBILITY OF THE APPROPRIATE CONTRACTOR TO CHECK AND VERIFY ALL DIMENSIONS ON SITE AND TO REPORT ALL ERRORS AND/OR OMISSIONS TO THE ARCHITECT.

ALL CONTRACTORS MUST COMPLY WITH ALL PERTINENT CODES AND BY-LAWS.

THIS DRAWING MAY NOT BE USED FOR CONSTRUCTION UNTIL SIGNED BY THE ARCHITECT.

DO NOT SCALE DRAWINGS.

COPYRIGHT RESERVED.

6	ISSUED FOR SPC REVISION	06.27.2022
5	ISSUED FOR SPC RND 01 COMMENTS	03.28.2022
4	ISSUED FOR SPC RND 01 COMMENTS	03.18.2022
3	ISSUED FOR COORDINATION	03.14.2022
2	ISSUED FOR REVISED SITE PLAN CONTROL APPLICATION	12.13.2021
1	ISSUED FOR SPC COORDINATION	12.08.2021

No.	DESCRIPTION	DD.MM.YY
-----	-------------	----------

ARCHITECT SEAL:	NORTH ARROW:
-----------------	--------------



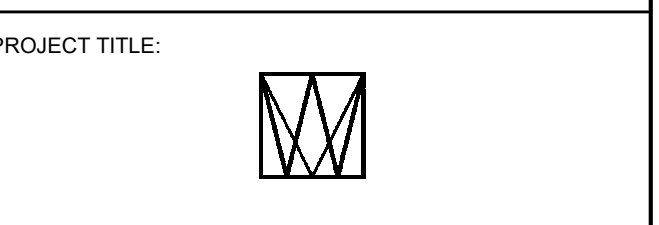
CLIENT:



ARCHITECT:

rla/architecture
56 Beech Street, Ottawa, Ontario K1S 3J6
t.613.724.9932 f.613.724.1209 www.rodericklahey.ca

PROJECT TITLE:



THE WESTMOUNT

398-406 ROOSEVELT AVE. OTTAWA, ONTARIO

SHEET TITLE:

BUILDING ELEVATIONS

DRAWN:

L.M.

CHECKED:

R.V.

SCALE:

1 : 125

SHEET No:

A-200

PROJECT No:

2122