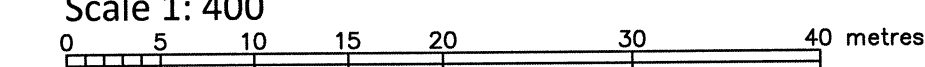


PART OF BLOCK 223
REGISTERED PLAN 4M-1617
CITY OF OTTAWA

FARLEY, SMITH & DENIS SURVEYING LTD. 2022

Scale 1: 400



Metric Note

Distances and coordinates on this plan are in metres and can be converted to feet by dividing by 0.3048.

Distance Note

Distances shown on this plan are ground distances and can be converted to grid distances by multiplying by the combined scale factor of 0.99996.

Bearing Note

Bearings hereon are grid bearings derived from the northerly limit of Voie Salamander Way as shown on Registered Plan 4M-1617, having a bearing of N 59° 15' 30" E and are referred to the Central Meridian of MTM Zone 9 (76°30' West Longitude) Nad-83 (Original).

Elevation Notes

- Elevations shown are geodetic and are referred to Geodetic Datum CGVD-1928 -1978. (Monument No. 1375760723)
- It is the responsibility of the user of this information to verify that the job benchmark has not been altered or disturbed and that its relative elevation and description agrees with the information shown on this drawing.

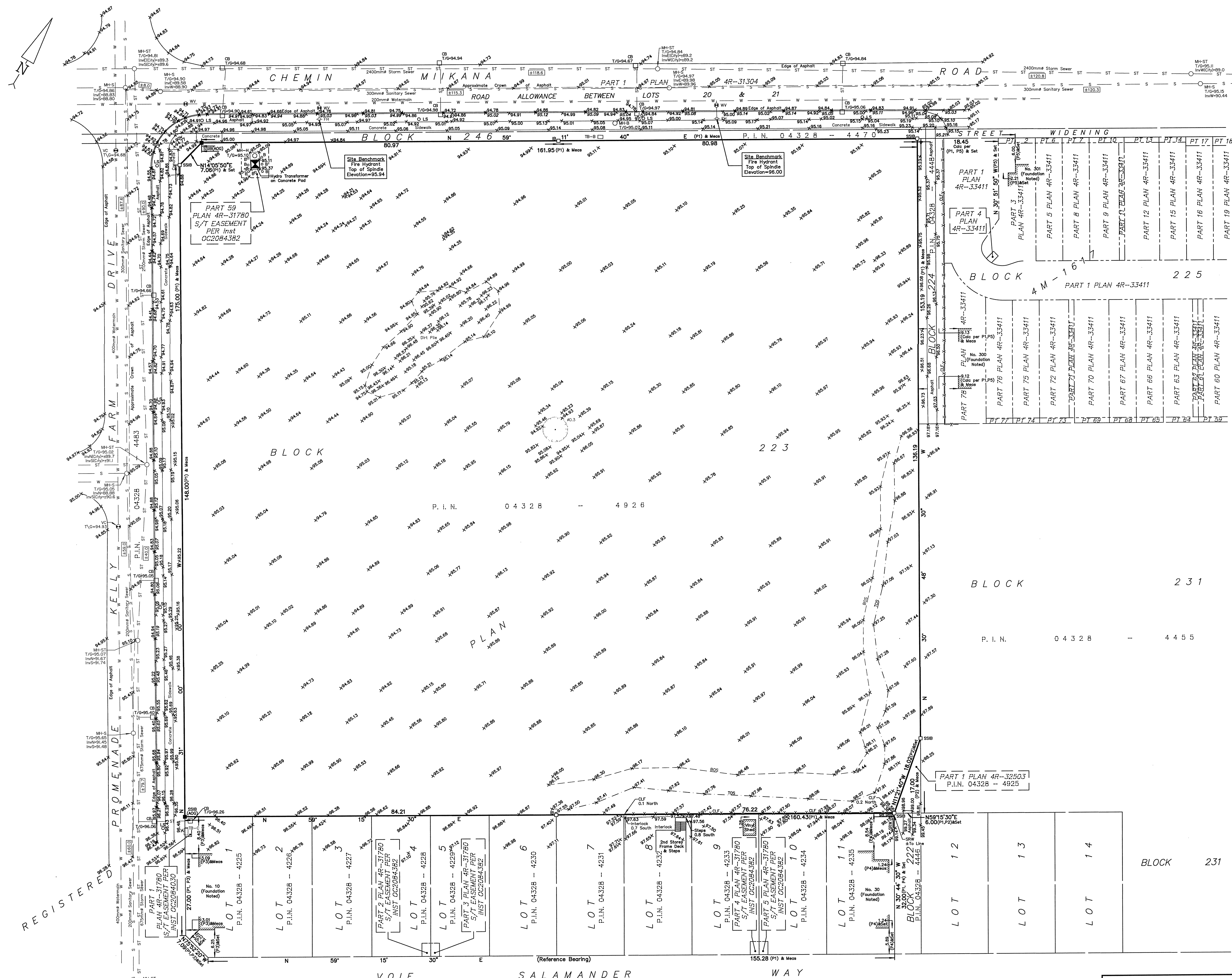
Utility Notes

- This drawing cannot be accepted as acknowledging all of the utilities and it will be the responsibility of the user to contact the respective utility authorities for confirmation.
- Only visible surface utilities were located.
- Underground utility data derived from City of Ottawa utility sheet reference: 1735760723 & 1735760724.
- Sanitary and storm sewer grades and inverts were compiled from: Field measurement and City of Ottawa Utility Sheets.
- A field location of underground plant by the pertinent utility authority is mandatory before any work involving breaking ground, probing, excavating etc.

Notes & Legend

Denotes	
□	Survey Monument Planted
■	Survey Monument Found
▣	Standard Iron Bar
SSB	Short Standard Iron Bar
IB	Iron Bar
Meas	Measured
(P1)	Registered Plan 4M-1617
(P2)	Plan 4R-32503
(P3)	Plan by (AOG) dated April 5, 2019 (Job No. 18976-18)
(P4)	Plan by (SG) dated June 14, 2019 (Prj. No. 161650000-109)
(P5)	Plan by (SG) dated January 14, 2021 (Prj. No. 161650000-109)
MH-ST	Maintenance Hole (Storm)
MH-S	Maintenance Hole (Sanitary)
MH-B	Maintenance Hole (Bell)
MH-H	Maintenance Hole (Hydro)
VC	Valve Chamber (Watermain)
ST	Underground Storm Sewer
S	Underground Sanitary Sewer
W	Underground Water
LS	Light Standard
CB	Catch Basin
PH	Fire Hydrant
WH	Water Valve
WB	Water Valve
TB-B	Bell Terminal Box
TC-C	Cable Terminal Box
D	Diameter
CLF	Chain Link Fence
SRW	Stone Retaining Wall
Inv.	Invert
Inv(City)	Invert From City of Ottawa Utility Plans
T/G	Top of Grate
T/S	Top of Slope
B/S	Bottom of Slope
C/L	Centreline
ST	Subject To
+65.00	Location of Elevations
+65.00	Top of Concrete Curb/Retaining Wall Elevation
Property Line	Property Line
○	Deciduous Tree - The Symbol shown denotes location and trunk diameter only. Size of its root system/overhead canopy may be smaller/larger than the symbol size depicted on this plan.

Site Area = 25455.3 sq.m.



WARNING NO PERSON MAY COPY, REPRODUCE, DISTRIBUTE OR ALTER THIS PLAN IN WHOLE OR IN PART WITHOUT THE WRITTEN PERMISSION OF FARLEY, SMITH & DENIS SURVEYING LTD. © FARLEY, SMITH & DENIS SURVEYING LTD., 2022.

Surveyor's Certificate

I certify that:

- This survey and plan are correct and in accordance with the Survey Act, the Surveyors Act and the Regulations made under them.
- The survey was completed on the 12th day of April, 2022.

Date: April 12, 2022

Jamie Leslie
Ontario Land Surveyor

ASSOCIATION OF ONTARIO LAND SURVEYORS
PLAN SUBMISSION FORM
V - 25571

THIS PLAN IS NOT VALID UNLESS IT IS AN EMBOSSED ORIGINAL COPY ISSUED BY THE SURVEYOR In accordance with Regulation 1026, Section 29 (3).

FARLEY, SMITH & DENIS SURVEYING LTD.

ONTARIO LAND SURVEYORS
CANADA LAND SURVEYORS

Unit 275, 30 COLONNADE ROAD, OTTAWA, ONTARIO K2E 7J6
TEL: (613) 727-8226 E-mail: fdsurvey@bellnet.ca

FILE No.: 121-22