



**OTTAWA - CARLETON DISTRICT SCHOOL BOARD**

**NOTE:**  
SEE CIVIL DRAWINGS FOR SITE SERVICING / GRADING.

**THIS PLAN IS ISSUED FOR SITE PLAN CONTROL SUBMISSION ONLY.**

**ADDITIONAL DETAILING AND SPECIFICATIONS ARE REQUIRED PRIOR TO TENDERING AND CONSTRUCTION.**

- GENERAL NOTES**
- All general site information and conditions compiled from existing plans, surveys and consultant's field notes. Report all discrepancies prior to any work. No responsibility is born by the Consultant for unknown subsurface conditions.
  - The location of the utilities is approximate only, and the exact location should be determined by consulting the municipal authorities and utility companies concerned. The Contractor shall provide the location of utilities and shall be responsible for adequate protection from damage.
  - All dimensions shown are to be verified on site prior to any construction. No deviations are to be made from the layouts as shown on this plan without prior consultation with the Landscape Architect and Owner.
  - Obtain approval of Landscape Architect for granular base and layout of all pavement areas prior to construction.
  - Stake planting locations and receive approval of Landscape Architect, prior to excavation of any planting pits. No substitutions of plant material shall be made without prior approval of the Landscape Architect.
  - Where clay is encountered proper drainage must be ensured in tree/shrub pits, prior to planting. Have method approved by Landscape Architect.
  - All sodded areas to receive a minimum of 150mm of topsoil over graded sub-base. If sod with mesh is used, mesh to be removed completely during sodding operations. Sod shall come from an approved source and shall be laid within 24 hours of being cut in the nursery. Only nursery sod shall be used.
  - Final subgrade is to be approved by the Landscape Architect prior to sod being laid.
  - Maintain positive surface runoff through the entire construction period.
  - Reinstate all areas and items damaged as a result of construction activities.

**LEGEND**

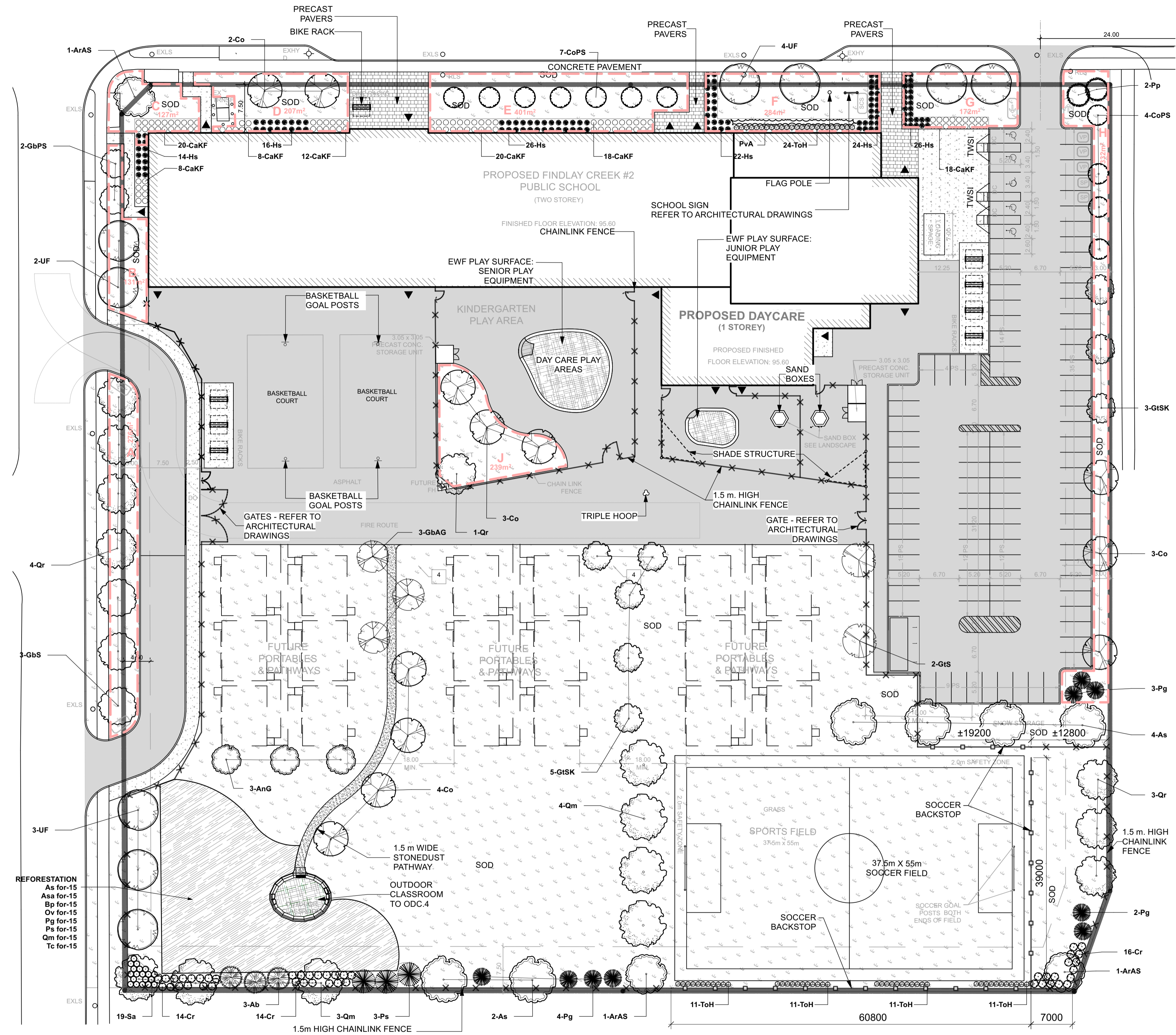
- PROPERTY LINE
- CHAIN LINK FENCE
- SOCCER BACKSTOP FENCE
- ASPHALT PAVEMENT
- CONCRETE PAVEMENT
- EWf PLAYGROUND SURFACE
- STONEDUST PATHWAY / PAVEMENT
- PRECAST CONCRETE PAVERS
- REFORESTATION AREA
- SOD
- SOIL VOLUME AREAS

**Plant List**

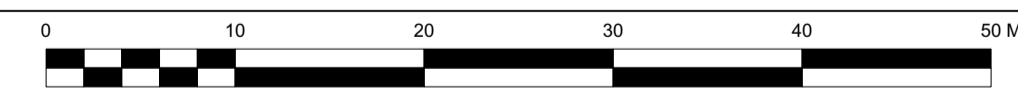
ID	Qty	Botanical name	Common name	Sched. size	Remarks
<b>STANDARD PLANTING</b>					
<b>Caliper Trees</b>					
Ab	3	Abies balsamea	Balsam Fir	200 cm ht	
AnG	3	Acer nigrum 'Green Column'	Green Column Black Maple	60mm caliper	WB Staked
ArAS	3	Acer rubrum 'Autumn Spire'	Red Maple	50mm caliper	WB Staked
As	6	Acer saccharum	Sugar Maple	70mm caliper	WB Staked
Co	12	Celtis occidentalis	Hackberry	70mm caliper	WB Staked
CoPS	4	Celtis occidentalis 'Prairie Sentinel'	Prairie Sentinel Hackberry	60mm caliper	WB Staked
GAG	3	Ginkgo biloba 'Autumn Gold'	Autumn Gold Maidenhair Tree	60mm caliper	WB Staked
GPS	2	Ginkgo biloba 'Princeton Sentry'	Princeton Sentry Maidenhair Tree	70mm caliper	B&B / WB, single stem
GSt	3	Ginkgo biloba 'Saratoga'	Saratoga Maidenhair Tree	70mm caliper	WB Staked
GIS	2	Gleditsia triacanthos inermis 'Shademaster'	Gleditsia Shademaster	70mm caliper	WB Staked
GISK	8	Gleditsia triacanthos inermis 'Draves'	Streetkeeper Honeylocust	60mm caliper	WB Staked
Pg	9	Picea glauca	White Spruce	200 cm ht	WB, Staked
Pp	2	Picea pungens	Colorado Spruce	200 cm ht	WB Staked
Ps	3	Pinus strobus	Eastern White Pine	200 cm ht	B&B
Qm	7	Quercus macrocarpa	Burr Oak	70mm caliper	WB, Staked
Qr	8	Quercus rubra	Northern Red Oak	70mm caliper	WB Staked
UF	9	Ulmus 'Frontier'	Frontier Elm	70mm caliper	WB Staked
<b>Shrubs</b>					
Cr	44	Cornus racemosa	Gray Dogwood	50 cm ht.	Bare root
Sa	19	Symphoricarpos albus	Snowberry	50 cm ht.	Potted
ToH	68	Thuja occidentalis 'Holmstrup'	Holmstrup Cedar	125cm ht	0.5m o.c. or specimen
<b>Perennials</b>					
Hs	128	Helictrochon sempervirens	Ornamental Oats		1 gallon pot
CaKF	104	Calamagrostis x acutiflora 'Karl Foerster'	Feather Reed Grass		Potted
PvA	120	Perennial Mix A - Sun-Shade	Perennial variety Sun-Shade	150mm pot	
<b>REFORESTATION</b>					
<b>Reforestation Trees</b>					
As for	15	Acer saccharum	Sugar Maple	150 cm ht.	Bare root
Asa for	15	Acer rubrum	Red Maple	150 cm ht.	Bare root
Bp for	15	Betulus papyrifera	White Birch	150 cm ht.	Bare root
Ov for	15	Ostrya virginiana	American Hophornbeam	150 cm ht.	Bare root
Pg for	15	Picea glauca	White Spruce	75 cm ht.	Potted
Ps for	15	Pinus strobus	White Pine	50 cm ht.	Potted
Qm for	15	Quercus macrocarpa	Burr Oak	150 cm ht.	Bare root
Tc for	15	Tsuga canadensis	Canadian Hemlock	75 cm ht.	Potted

Soil Volume Area, Tree Quantity and Size	Tree Quantity	OTTAWA Target Soil Volume (m <sup>3</sup> )	Design Soil Volume	Soil Adequacy percentage
<b>AREA A - 7 large trees</b> plant bed (276 sq m x 0.5 metre deep)	7	126.0	138.0	109.52%
<b>AREA B - 2 medium trees, 2 columnar trees</b> plant bed (131 sq m x 0.5 metre deep)	4	48.0	65.5	136.46%
<b>AREA C - 1 large tree</b> plant bed (127 sq m x 0.5 metre deep)	1	30.0	63.5	211.67%
<b>AREA D - 2 medium trees</b> plant bed (207 sq m x 0.5 metre deep)	2	30.0	103.5	345.00%
<b>AREA E - 7 medium trees</b> plant bed (401 sq m x 0.4 metre deep)	7	84.0	160.4	190.95%
<b>AREA F - 2 medium trees</b> plant bed (284 sq m x 0.4 metre deep)	2	24.0	113.6	473.33%
<b>AREA G - 2 medium trees</b> plant bed (172 sq m x 0.5 metre deep)	2	24.0	86.0	358.33%
<b>AREA H - 3 medium trees, 7 columnar trees, 5 conifers</b> plant bed (289 sq m x 0.5 metre deep)	15	174.0	144.5	83.05%
<b>AREA J - 1 large tree, 3 medium trees</b> plant bed (239 sq m x 0.5 metre deep)	4	63.0	119.5	189.68%

\* Small ornamental trees with growth to 8-15cm DBH, large shrubs, and columnar conifers calculated using 'How much soil to grow a big tree' by DeepRoot as a guide



**LANDSCAPE / PLANTING PLAN**  
Scale: 1:400

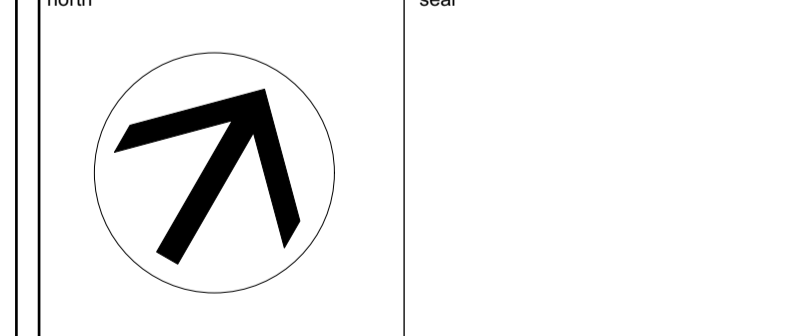


ID	Issued for Site Plan Control	2022/06/28
06		
05		
04		
03		
02		
01	Issued for Site Plan Control	2022/06/28
no.	revision	date

**N45 ARCHITECTURE INC.**  
71 Bank Street, 7th Floor - Ottawa, Ontario, K1P 5N2  
tel. 613.224.0095 fax 613.224.9811

**Ruhland & Associates Ltd**  
landscape architecture • urban design • site planning  
Ph 613-224-4244 Fax 613-224-1331 info@ralta.ca www.ralta.ca

FINDLAY CREEK #2 PUBLIC SCHOOL  
OTTAWA-CARLETON DISTRICT  
SCHOOL BOARD  
820 MIKANA ROAD  
OTTAWA, ON



**LANDSCAPE / PLANTING PLAN**

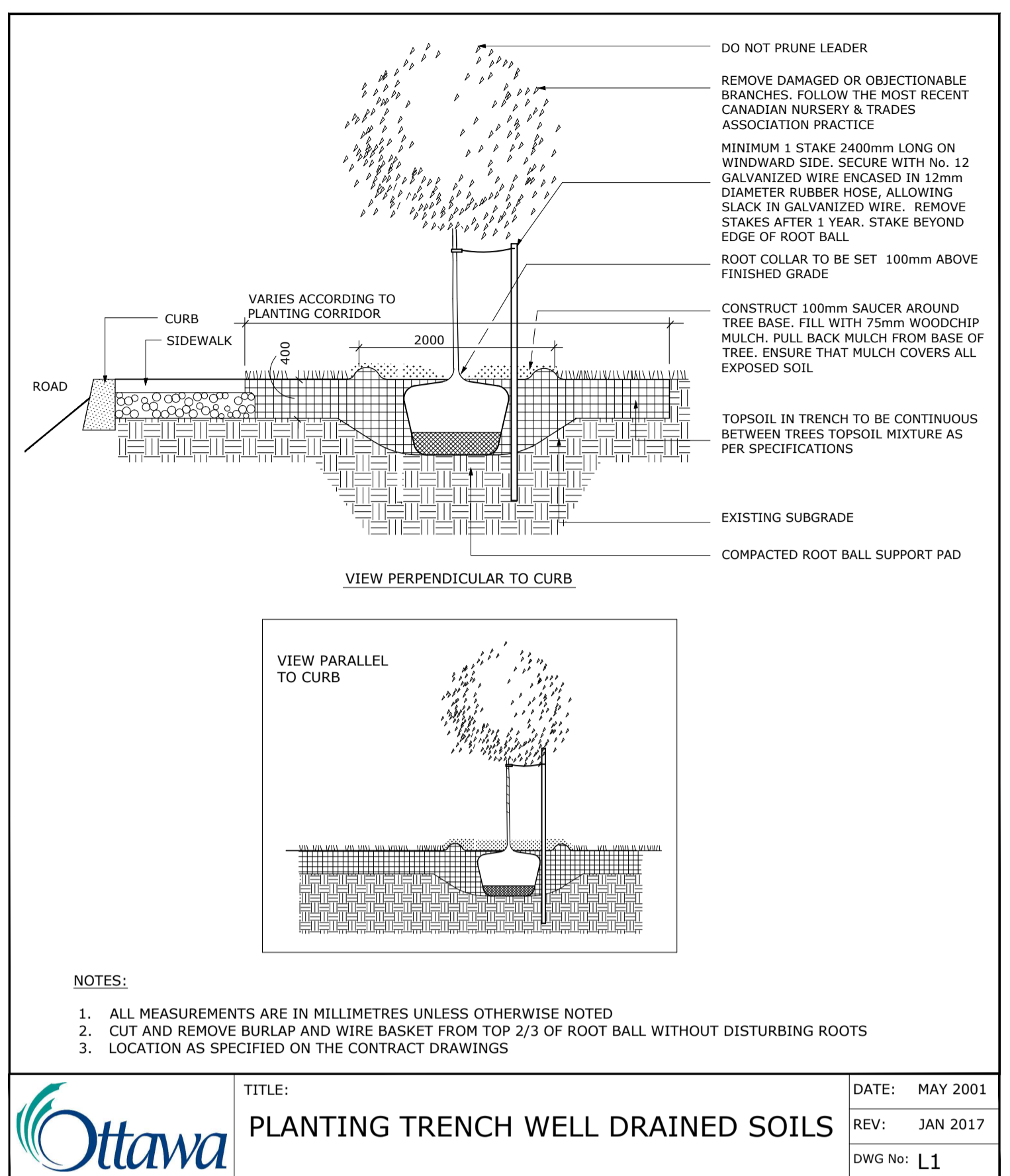
scale: 1:400	drawn by: A.A / T.F.
date: 2020-12-18	checked by: M.R.
project number: N45 20-600	drawing number: RA 20-1631
	<b>L-01</b>

CONTRACTOR TO VERIFY ALL DIMENSIONS AND NOTIFY THE ARCHITECT OF ANY DISCREPANCIES BEFORE WORK COMMENCES.  
**DO NOT SCALE DRAWINGS**



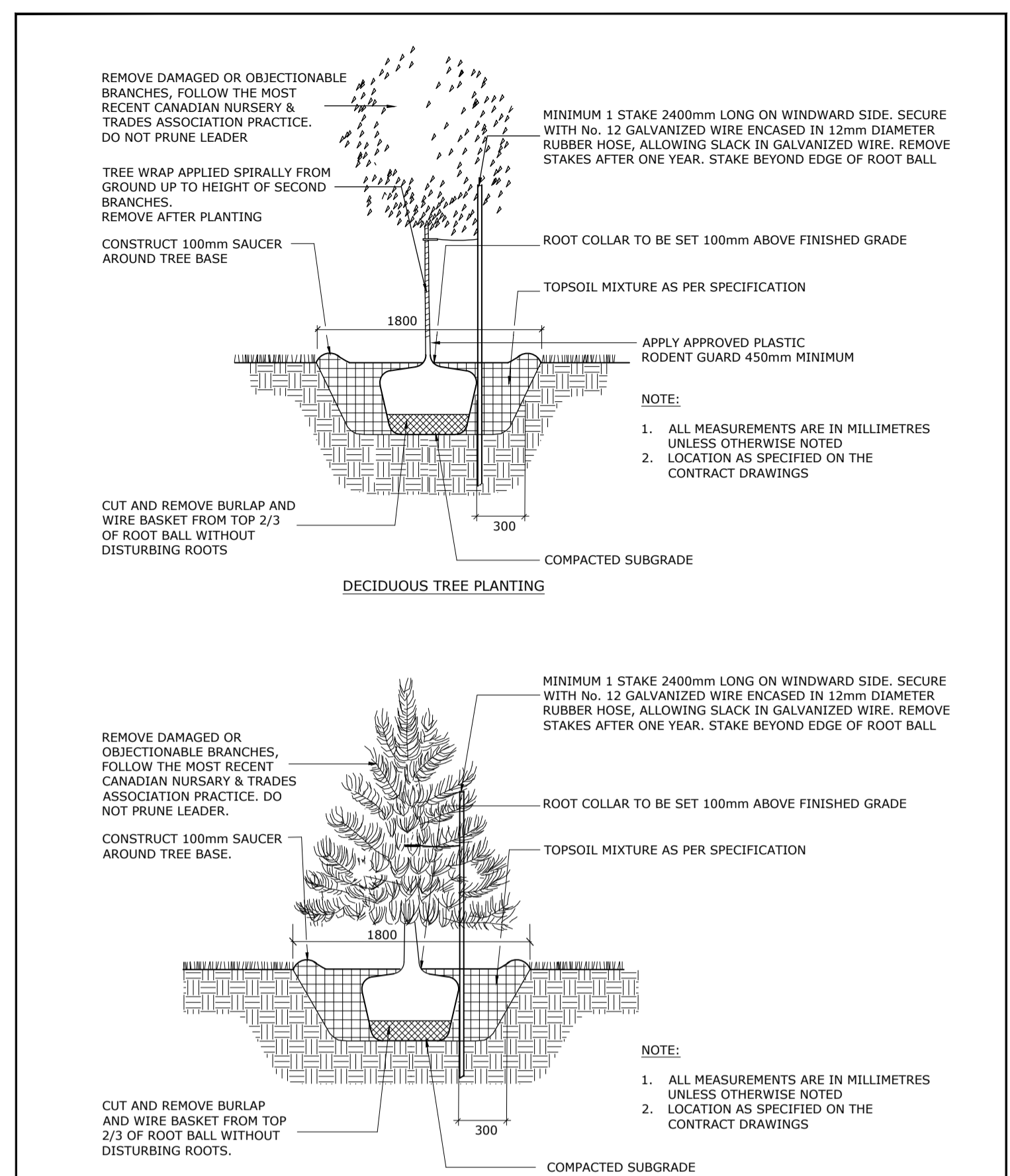
**OTTAWA - CARLETON DISTRICT SCHOOL BOARD**

- GENERAL NOTES**
1. All general site information and conditions compiled from existing plans, surveys and consultant's field notes. Report all discrepancies prior to any work. No responsibility is born by the Consultant for unknown subsurface conditions.
  2. The location of the utilities is approximate only, and the exact location should be determined by consulting the municipal authorities and utility companies concerned. The Contractor shall prove the location of utilities and shall be responsible for adequate protection from damage.
  3. All dimensions shown are to be verified on site prior to any construction. No deviations are to be made from the layouts as shown on this plan without prior consultation with the Landscape Architect and Owner.
  4. Obtain approval of Landscape Architect for granular base and layout of all pavement areas prior to construction.
  5. Stake planting locations and receive approval of Landscape Architect, prior to excavation of any planting pits. No substitutions of plant material shall be made without prior approval of the Landscape Architect.
  6. Where clay is encountered proper drainage must be ensured in tree/shrub pits, prior to planting. Have method approved by Landscape Architect.
  7. All sodded areas to receive a minimum of 150mm of topsoil over graded sub-base. If sod with mesh is used, mesh to be removed completely during sodding operations. Sod shall come from an approved source and shall be laid within 24 hours of being cut in the nursery. Only nursery sod shall be used.
  8. Final subgrade is to be approved by the Landscape Architect prior to sod being laid.
  9. Maintain positive surface runoff through the entire construction period.
  10. Reinstall all areas and items damaged as a result of construction activities.



**TREE SOIL VOLUME REQUIREMENTS:**

- STANDARD TREE SOIL VOLUMES QUANTITIES INCLUDE THE TOP 900-1000mm OF SOIL/EXISTING SUBSOIL LAYER TO CALCULATE TOTAL SOIL VOLUMES REQUIRED BY CITY OF OTTAWA FOR SUSTAINABLE TREE GROWTH. WHERE LARGER SOFT AREAS ARE AVAILABLE, THE TOP 400-500mm LAYER IS USED TO CALCULATE SOIL VOLUMES.
- WHERE EXISTING MATERIAL BELOW THE SPECIFIED TOPSOIL IS NOT CONDUCIVE TO TREE GROWTH, AN ADDITIONAL LAYER OF PLANTING MEDIUM IS TO BE INSTALLED BELOW SPECIFIED TOPSOIL DEPTH TO OBTAIN THE SOIL VOLUME DEPTH REQUIRED.
- REFER TO SOIL VOLUME CHART AND PLANS FOR AREA WHERE TREE SOIL VOLUMES ARE REQUIRED.

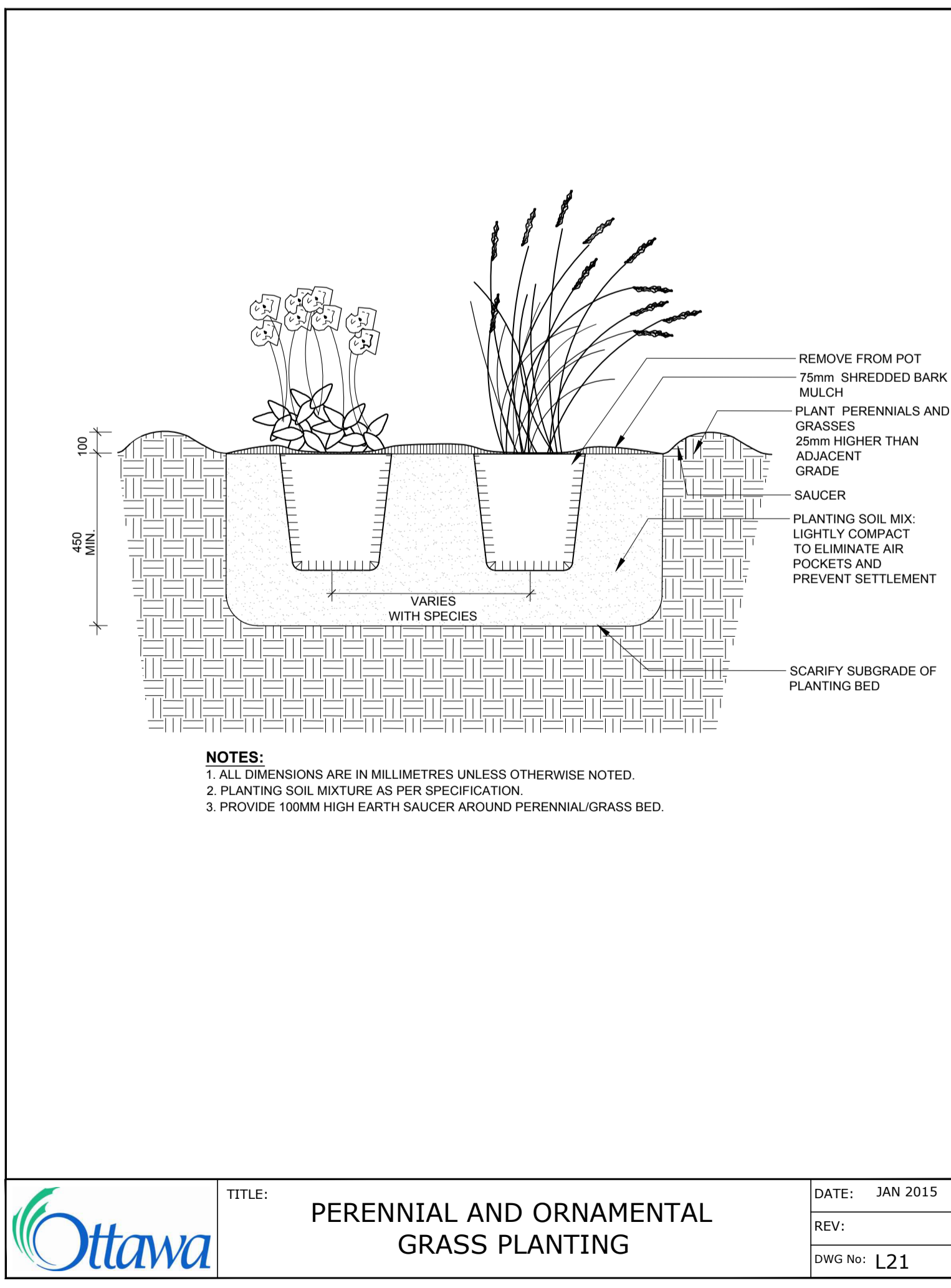
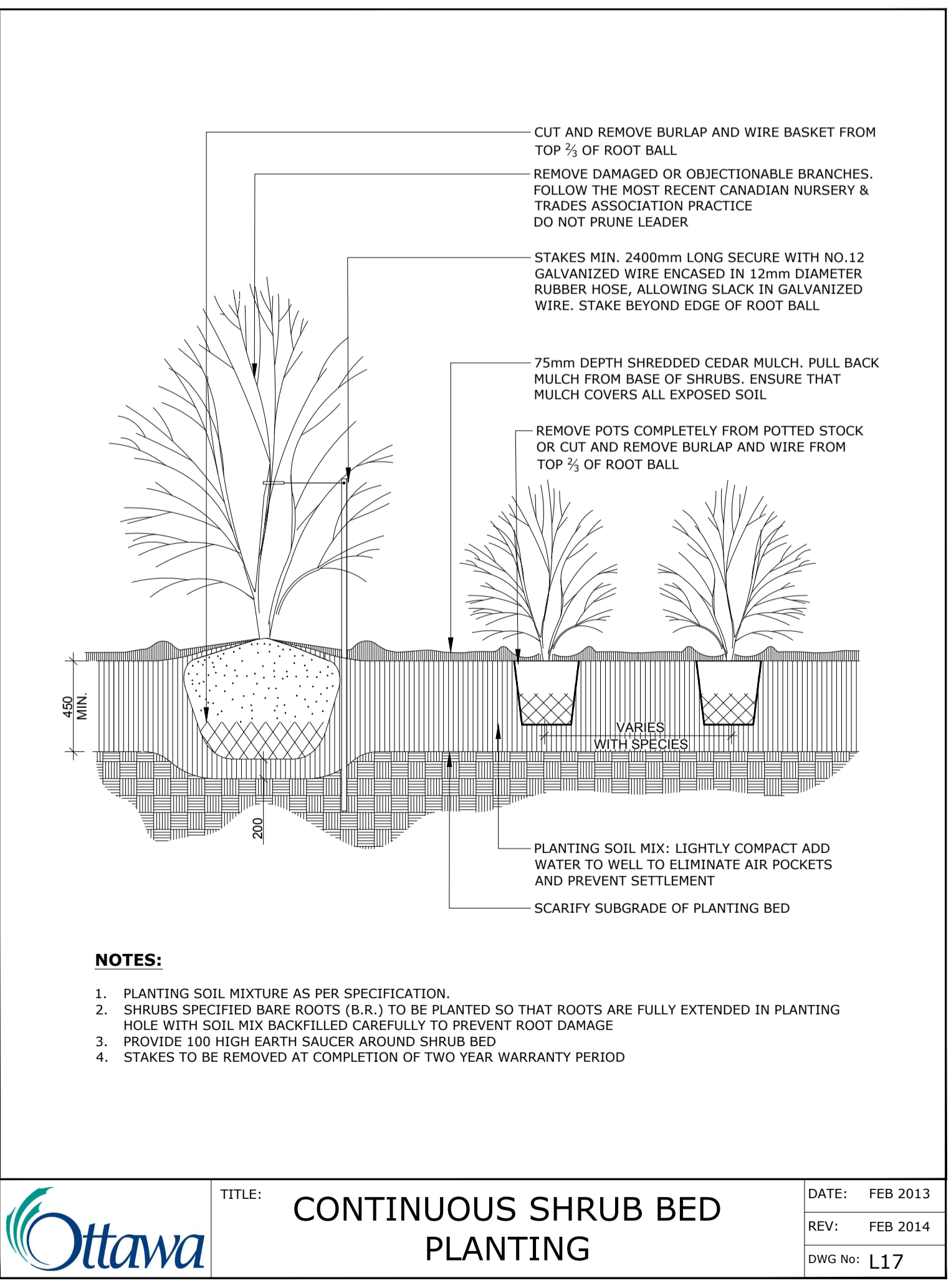


**TITLE: PLANTING TRENCH WELL DRAINED SOILS (LOTS)**

**DATE: MAY 2011**

**REV: JAN 2017**

**DWG No: L2**



06		
05		
04		
03		
02		
01	Issued for Site Plan Control	2022/06/28
no.	revision	date

**N45 ARCHITECTURE INC.**  
71 Bank Street, 7th Floor - Ottawa, Ontario, K1P 5N2  
tel. 613.224.0095 fax 613.224.9811

**Ruhland & Associates Ltd**  
landscape architecture • urban design • site planning  
Ph 613-224-4244 Fx 613-224-1131 info@rala.ca www.rala.ca

**FINDLAY CREEK #2 PUBLIC SCHOOL OTTAWA-CARLETON DISTRICT SCHOOL BOARD**  
820 MIKANA ROAD OTTAWA, ON

north	seal
-------	------

**DETAILS**

scale	1:400	drawn by	A.A / T.F
date	2020-12-18	checked by	M.R.
project number	N45 20-600	drawing number	<b>L-02</b>
RA	20-1631	revision	

CONTRACTOR TO VERIFY ALL DIMENSIONS AND NOTIFY THE ARCHITECT OF ANY DISCREPANCIES BEFORE WORK COMMENCES.

**DO NOT SCALE DRAWINGS**



**OTTAWA - CARLETON  
DISTRICT SCHOOL BOARD**

- GENERAL NOTES**
- All general site information and conditions compiled from existing plans, surveys and consultant's field notes. Report all discrepancies prior to any work. No responsibility is born by the Consultant for unknown subsurface conditions.
  - The location of the utilities is approximate only, and the exact location should be determined by consulting the municipal authorities and utility companies concerned. The Contractor shall prove the location of utilities and shall be responsible for adequate protection from damage.
  - All dimensions shown are to be verified on site prior to any construction. No deviations are to be made from the layouts as shown on this plan without prior consultation with the Landscape Architect and Owner.
  - Obtain approval of Landscape Architect for granular base and layout of all pavement areas prior to construction.
  - Stake planting locations and receive approval of Landscape Architect, prior to excavation of any planting pits. No substitutions of plant material shall be made without prior approval of the Landscape Architect.
  - Where clay is encountered proper drainage must be ensured in tree/shrub pits, prior to planting. Have method approved by Landscape Architect.
  - All sodded areas to receive a minimum of 150mm of topsoil over graded sub-base. If sod with mesh is used, mesh to be removed completely during sodding operations. Sod shall come from an approved source and shall be laid within 24 hours of being cut in the nursery. Only nursery sod shall be used.
  - Final subgrade is to be approved by the Landscape Architect prior to sod being laid.
  - Maintain positive surface runoff through the entire construction period.
  - Reinstate all areas and items damaged as a result of construction activities.

06		
05		
04		
03		
02		
01	Issued for Site Plan Control	2022/06/28
no.	revision	date

**N45 ARCHITECTURE INC.**  
71 Bank Street, 7th Floor - Ottawa, Ontario, K1P 5N2  
tel. 613.224.0095 fax 613.224.9811

**Ruhland & Associates Ltd**  
landscape architecture • urban design • site planning  
Ph 613-224-4744 Fx 613-224-1131 info@rala.ca www.rala.ca

**FINDLAY CREEK #2 PUBLIC SCHOOL  
OTTAWA-CARLETON DISTRICT  
SCHOOL BOARD**  
820 MIKANA ROAD  
OTTAWA, ON

north	seal
-------	------

<b>DETAILS</b>	
scale 1:400	drawn by A.A / T.F
date 2020-12-18	checked by M.R.
project number N45 20-600	drawing number <b>L-03</b>
RA 20-1631	
CONTRACTOR TO VERIFY ALL DIMENSIONS AND NOTIFY THE ARCHITECT OF ANY DISCREPANCIES BEFORE WORK COMMENCES.	
DO NOT SCALE DRAWINGS	
revision	

**UNIT PAVING - ON GRANULAR BASE**

**NOTES:**

- THE LEVELING COURSE (BEDDING SAND) SHALL BE PLACED LOOSE, IN A UNIFORM LAYER AT A MAXIMUM DEPTH OF 25mm TO ACHIEVE THE FINAL COMPACTED THICKNESS AND GRADE AS SPECIFIED
- INSTALL SOLID EDGE RESTRAINT BETWEEN UNIT PAVERS AND ANY SOFT SURFACE (SOD, PLANTING BED, ETC.)
- UNIT PAVERS ARE THEN PLACED ON TOP OF THE LEVELING COURSE AND ADDITIONAL SAND SWEEPED BETWEEN THE UNIT PAVERS
- THE UNIT PAVERS ARE THEN VIBRATED INTO PLACE WITH A VIBRA-PLATE AND WATER IS ADDED TO ASSIST IN THE SETTLING OF THE JOINT SAND
- GRANULAR 'A' DEPTH TO BE 100mm FOR PEDESTRIAN AREAS AND 150mm FOR VEHICULAR ACCESSES. OR AS RECOMMENDED BY GEOTECHNICAL INVESTIGATION
- USE OF THIS DETAIL REQUIRES THE PRIOR APPROVAL OF THE GENERAL MANAGER

**ADDITIONAL NOTES FOR NUMBER 5: PRECAST PAVERS IN PEDESTRIAN AREAS WHERE NORMAL SNOW REMOVALS ARE DONE IS TO RECEIVE A MINIMUM 200mm GRANULAR 'A'. FURTHER ADJUSTMENTS TO BE SPECIFIED IN RELATION TO SITE CONDITIONS AND GEOTECHNICAL RECOMMENDATIONS.**

DATE:	MAY 2001
REV:	FEB 2016
DWG No:	SC9

**DESIGN & CONSTRUCTION SERVICES**  
1224 STITTSVILLE MAIN STREET  
STITTSVILLE, ONTARIO, K2S 0E3  
TEL: (613) 596-5211  
FAX: (613) 721-0045

**LOG & ROCK LENGTHS**

TOTAL AREA	56m <sup>2</sup>
MULCH AREA	44.5m <sup>2</sup>
BOULDER LENGTH	4.7m
# OF BOULDERS	5
LOG LENGTH	20.6m

LENGTHS AND AREAS ARE APPROXIMATE BASED ON THE FINISHED DIMENSIONS AND DO NOT INCLUDE ANY WASTE OR MILLING OF MATERIALS REQUIRED TO CONSTRUCT THE OUTDOOR CLASSROOM AREA. CONTRACTOR TO REVIEW LAYOUTS AND INCLUDE ANY ADDITIONAL MATERIALS REQUIRED TO COMPLETE THE CONSTRUCTION WITH SUITABLE ACCEPTABLE MATERIALS.

5		
4		
3		
2		
1		

NUM	MILESTONES	DATE (Y/M/D)
1		

1	DRAWING TITLE	
A.1.1	SCALE	
	SHEET NUMBER	

ARCHITECT	CONSULTANT

PROJECT / LOCATION /  
**OUTDOOR CLASSROOMS**

VARIOUS SITES  
OTTAWA, ONTARIO

DRAWING  
**OUTDOOR CLASSROOM LAYOUT 4**

DESIGNED BY KURT BERGER	SHEET NO.
DRAWN BY KURT BERGER	
CHECKED BY DAN FOURNIER	
SCALE N.T.S.	

**ODC.4**

**LEGEND**

- ASPHALT TRANSITION RAMP
- BOULDER SEATING
- LOG RETAINER/SEATING

**NOTES:**  
1. LOCATION OF OUTDOOR BLACKBOARD, STAGE, AND SEATING ARE SUBJECT TO CHANGE OF LOCATION WITHIN THE OUTDOOR CLASSROOM. EACH OF THE SEATING OPTIONS ARE INTERCHANGEABLE WITH ANY LAYOUT

LOG RETAINER TYP.  
400mm WIDE (1 STRIP) SOD REPAIRS INCLUDED IN OUTDOOR CLASSROOM BASE INSTALLATION. TYP.

OPTIONAL:  
OUTDOOR BLACKBOARD.  
REFER TO 3/ODC.8.

OPTIONAL:  
RAISED STAGE.  
REFER TO 1/ODC.6.

OPTIONAL:  
INTERIOR SEATING.  
REFER TO ODC.6 FOR SEATING OPTIONS.

LOGS SCRIBED TO FIT TIGHT TOGETHER WITH NO GAPS OR VOIDS AS PER SPECIFICATIONS.

ASPHALT TRANSITION RAMP. LOCATION TO BE DETERMINED WITH THE DISTRICT BASED ON EXISTING SCHOOL AND PLAYGROUND & ORIENTATION OF THE ODC.

SCRIBE LOGS TO FIT TIGHT AND INTEGRATE INTO BOULDERS. TYPICAL AS PER SPECIFICATIONS.

LOGS SCRIBED TO FIT TIGHT TOGETHER WITH NO GAPS OR VOIDS AS PER SPECIFICATIONS.