

**TOPOGRAPHIC PLAN OF SURVEY OF  
LOT 8 (SOUTH OF BYRON AVENUE)  
REGISTERED PLAN 204  
CITY OF OTTAWA**  
Surveyed by Annis, O'Sullivan, Vollebek Ltd.

Scale 1 : 125



**Metric**

DISTANCES SHOWN ON THIS PLAN ARE IN METRES AND CAN BE CONVERTED TO FEET BY DIVIDING BY 0.3048

**Surveyor's Certificate**

I CERTIFY THAT:

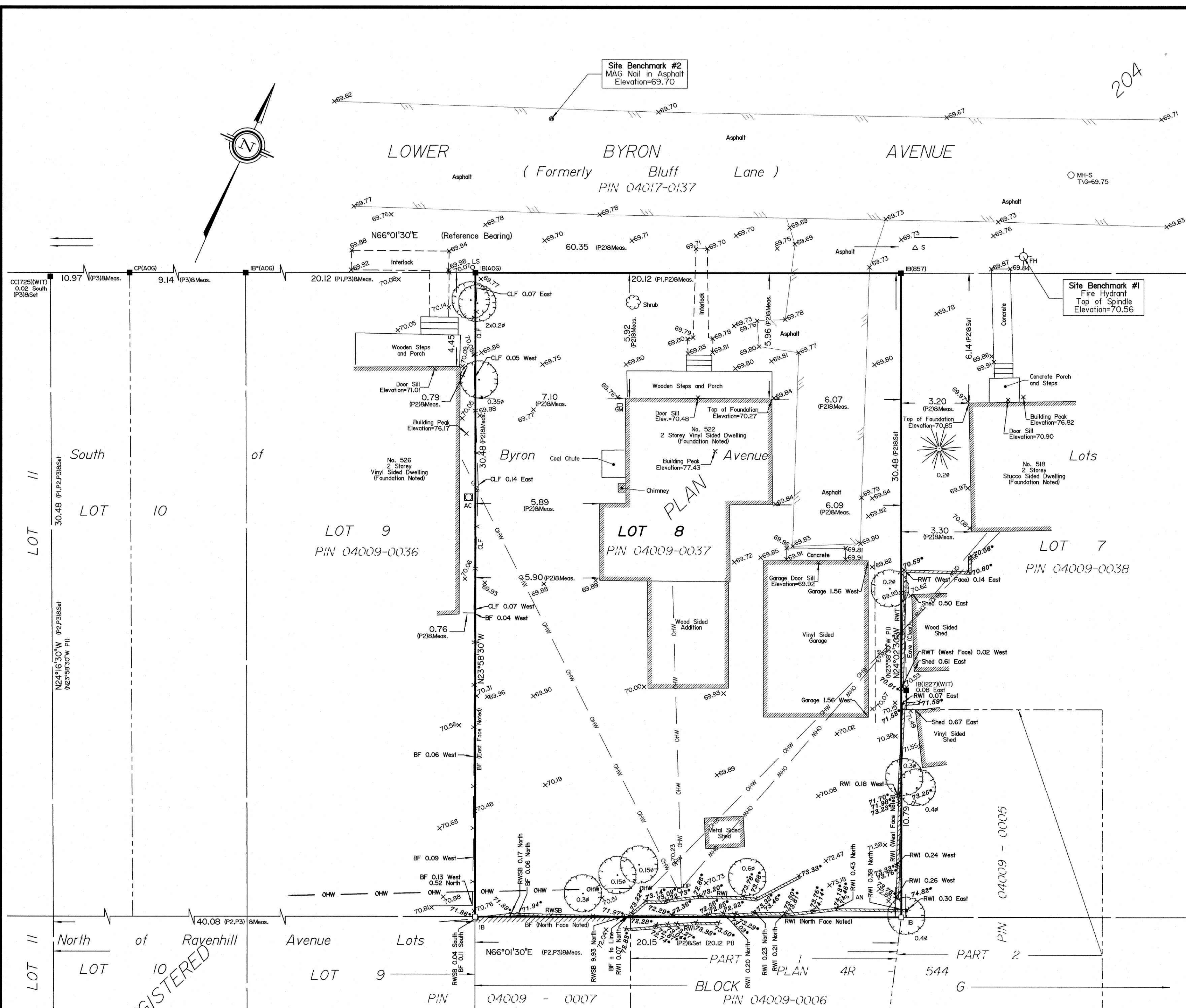
- This survey and plan are correct and in accordance with the Surveys Act and the Surveyors Act and the regulations made under them.
- The survey was completed on the 29th day of March, 2021.

April 1, 2021  
Date

*Richard R. Gauthier*  
Richard R. Gauthier  
Ontario Land Surveyor

**Notes & Legend**

Denotes	
	Survey Monument Planted
	Survey Monument Found
IB	Iron Bar
CC	Cut Cross
CP	Concrete Pin
IB*	Iron bar (0.3 Long)
(WIT)	Witness
Meas.	Measured
(AOG)	Annis, O'Sullivan, Vollebek Ltd.
(PI)	Registered Plan 204
(P2)	(AOG) Plan dated June 17, 1994
(P3)	(AOG) Plan dated February 8, 2010
	Deciduous Tree
	Coniferous Tree
	Fire Hydrant
	Maintenance Hole (Sanitary Sewer)
OHW	Overhead Wires
	Catch Basin
T/G	Top of Grate
	Gas Meter
	Sign
CLF	Chain Link Fence
BF	Board Fence
RWSB	Stone Block Retaining Wall
RWI	Interlock Retaining Wall
RWT	Timber Retaining Wall
	Gate
	Utility Pole
	Anchor
	Light Standard
	Air Conditioner
	Diameter
+ 65.00	Location of Elevations
+ 66.00*	Top of Retaining Wall Elevation
C/L	Centreline
	Property Line



Bearings are astronomic, derived from the southerly limit of Byron Avenue, shown to be N66°01'30" on Registered Plan 204.

**ELEVATION NOTES**

- Elevations shown are geodetic and are referred to the CGVD28 geodetic datum.
- It is the responsibility of the user of this information to verify that the job benchmark has not been altered or disturbed and that its relative elevation and description agrees with the information shown on this drawing.

**UTILITY NOTES**

- This drawing cannot be accepted as acknowledging all of the utilities and it will be the responsibility of the user to contact the respective utility authorities for confirmation.
- Only visible surface utilities were located.
- A field location of underground plant by the pertinent utility authority is mandatory before any work involving breaking ground, probing, excavating etc.

ASSOCIATION OF ONTARIO  
LAND SURVEYORS  
PLAN SUBMISSION FORM  
2165355

THIS PLAN IS NOT VALID UNLESS IT IS AN EMBOSSED ORIGINAL COPY ISSUED BY THE SURVEYOR In accordance with Regulation 1026, Section 29 (3).

© Annis, O'Sullivan, Vollebek Ltd, 2021. "THIS PLAN IS PROTECTED BY COPYRIGHT"  
**ANNIS, O'SULLIVAN, VOLLEBEK LTD.**  
14 Concourse Gate, Suite 500  
Nepean, Ont. K2E 7S6  
Phone: (613) 727-0850 / Fax: (613) 727-1079  
Email: Nepean@avoldtd.com

Ontario Land Surveyors Job No. 21399-21 Serco L18 RP204 T F AR

North of Ravenhill Avenue Lots 9, 10, 11 REGISTERED