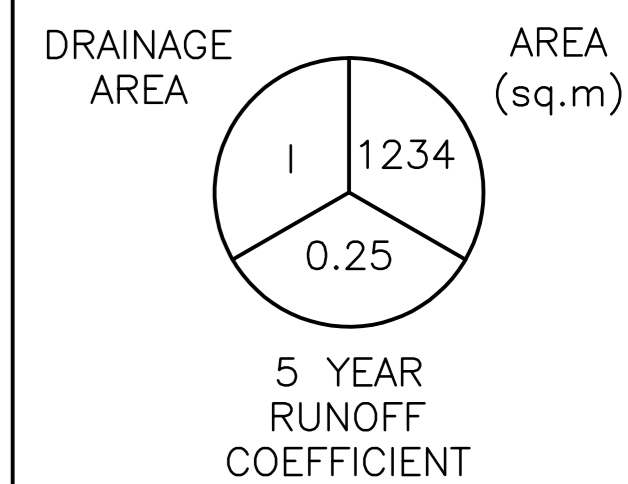
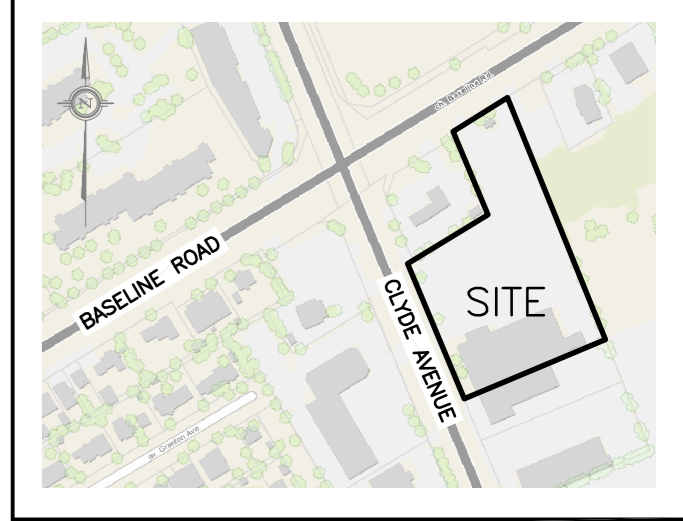


LEGEND



KEY PLAN



No.	DATE	REVISION
7	APR 28-22	RE-ISSUED FOR APPROVAL
6	JAN 5-22	ISSUED FOR TENDER
5	DEC 14-21	RE-ISSUED FOR APPROVAL
4	DEC 9-21	ISSUED FOR PERMIT
3	NOV 23-21	ISSUED FOR COORDINATION
2	JAN 8-20	ISSUED FOR APPROVAL
1	DEC 12-19	ISSUED FOR COORDINATION

D. B. GRAY ENGINEERING INC.
 Stormwater Management - Grading & Drainage - Storm & Sanitary Sewers - Watermain
 700 Long Point Circle 613-425-8044
 Ottawa, Ontario d.gray@dbgrayengineering.com

Project
 PROPOSED 6-STORY STORAGE FACILITY & 1-STORY BUILDING
 1375 CLYDE AVENUE
 OTTAWA, ONTARIO

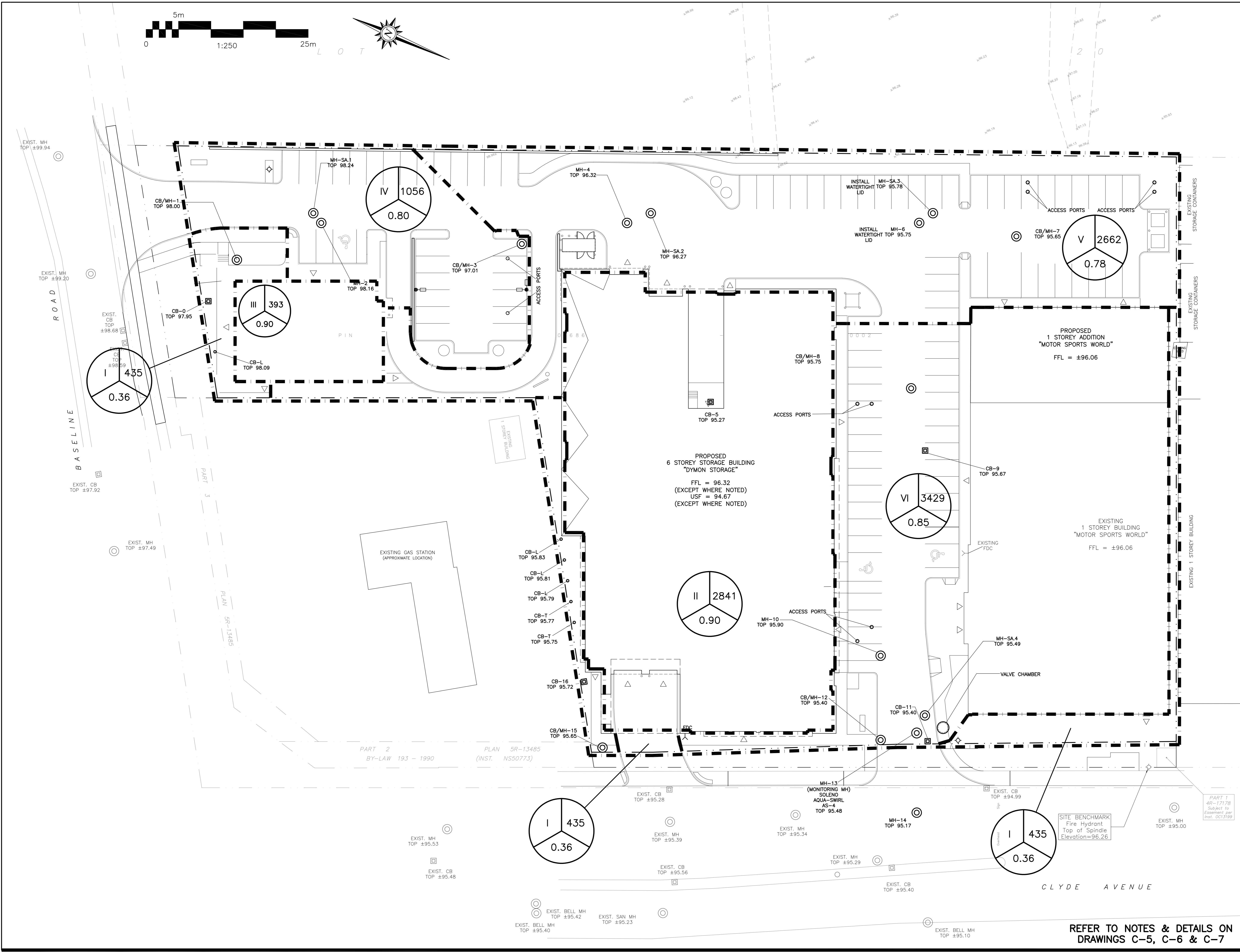
DRAINAGE PLAN

Engineer's Seal:

Drawn: D.B.G.
 Hor. Scale 1:250
 Vert. Scale
 Date SEP 17-19
 Job No. 19058

Drawing No. **C-8**
 of 8

NOT VALID UNLESS SIGNED & DATED



REFER TO NOTES & DETAILS ON DRAWINGS C-5, C-6 & C-7