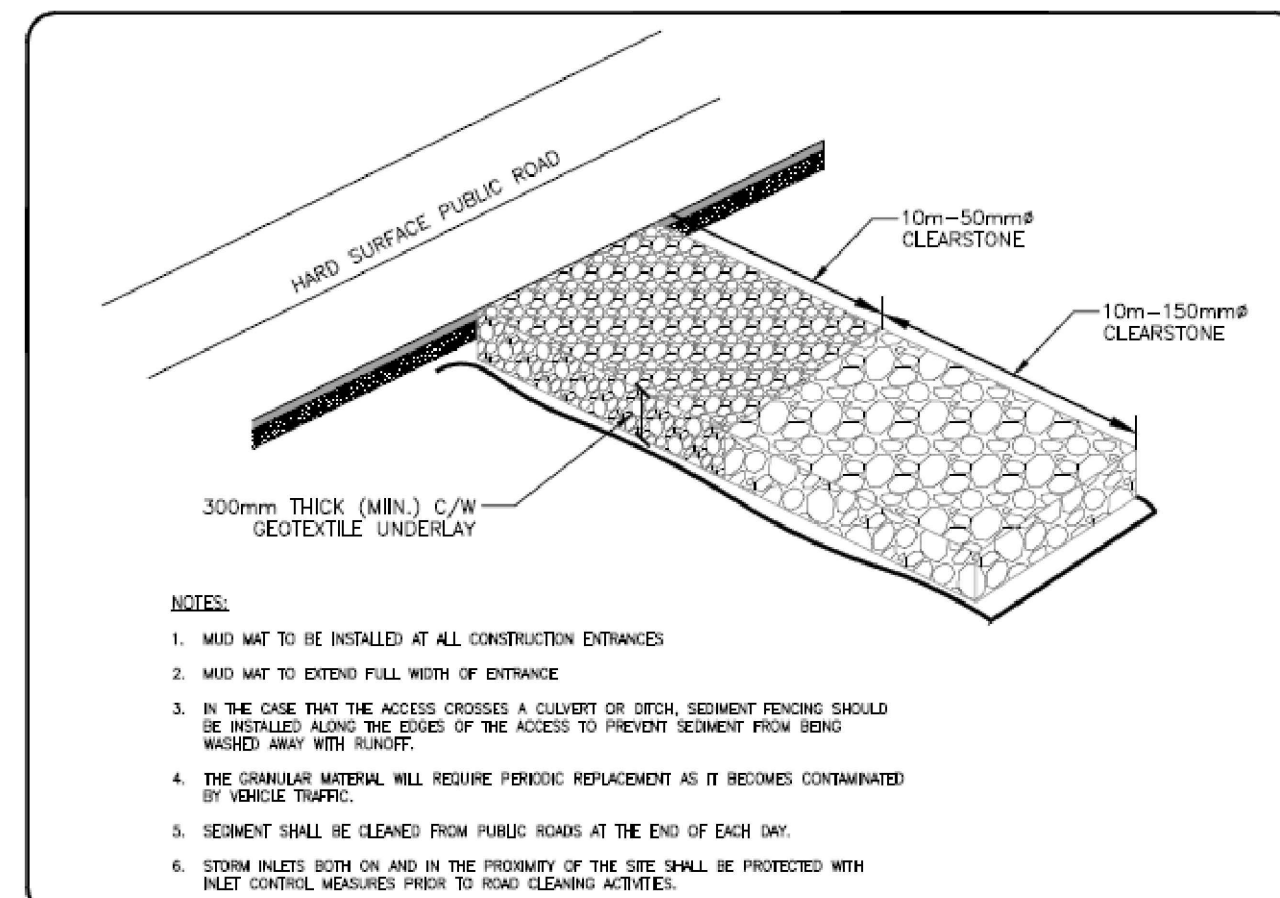
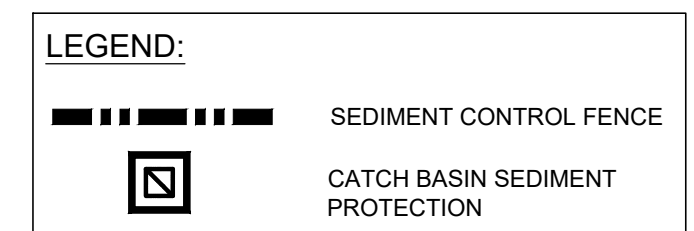


ROADSIDE CATCH BASIN PROTECTION DETAIL: TERRAFIX SILTSACK
SCALE: N.T.S.



MUD MAT ENTRANCE DETAIL
SCALE: N.T.S.



EROSION AND SEDIMENT CONTROL NOTES

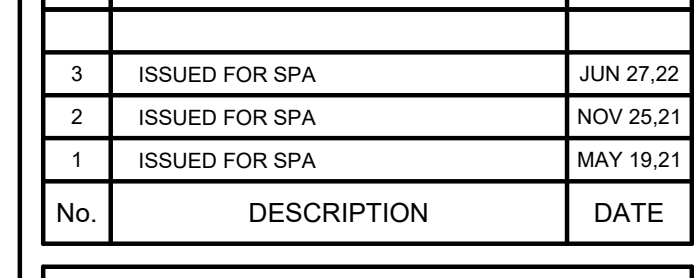
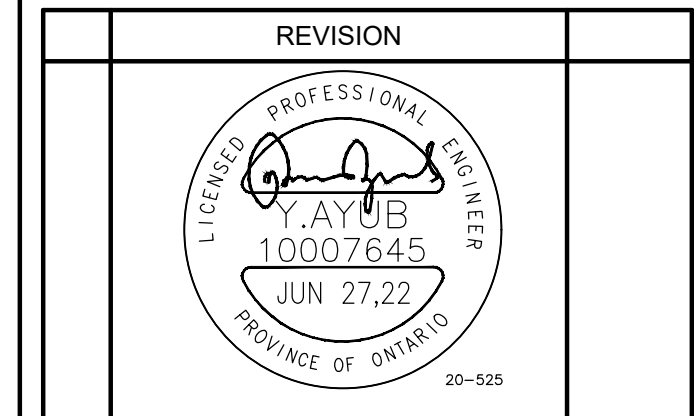
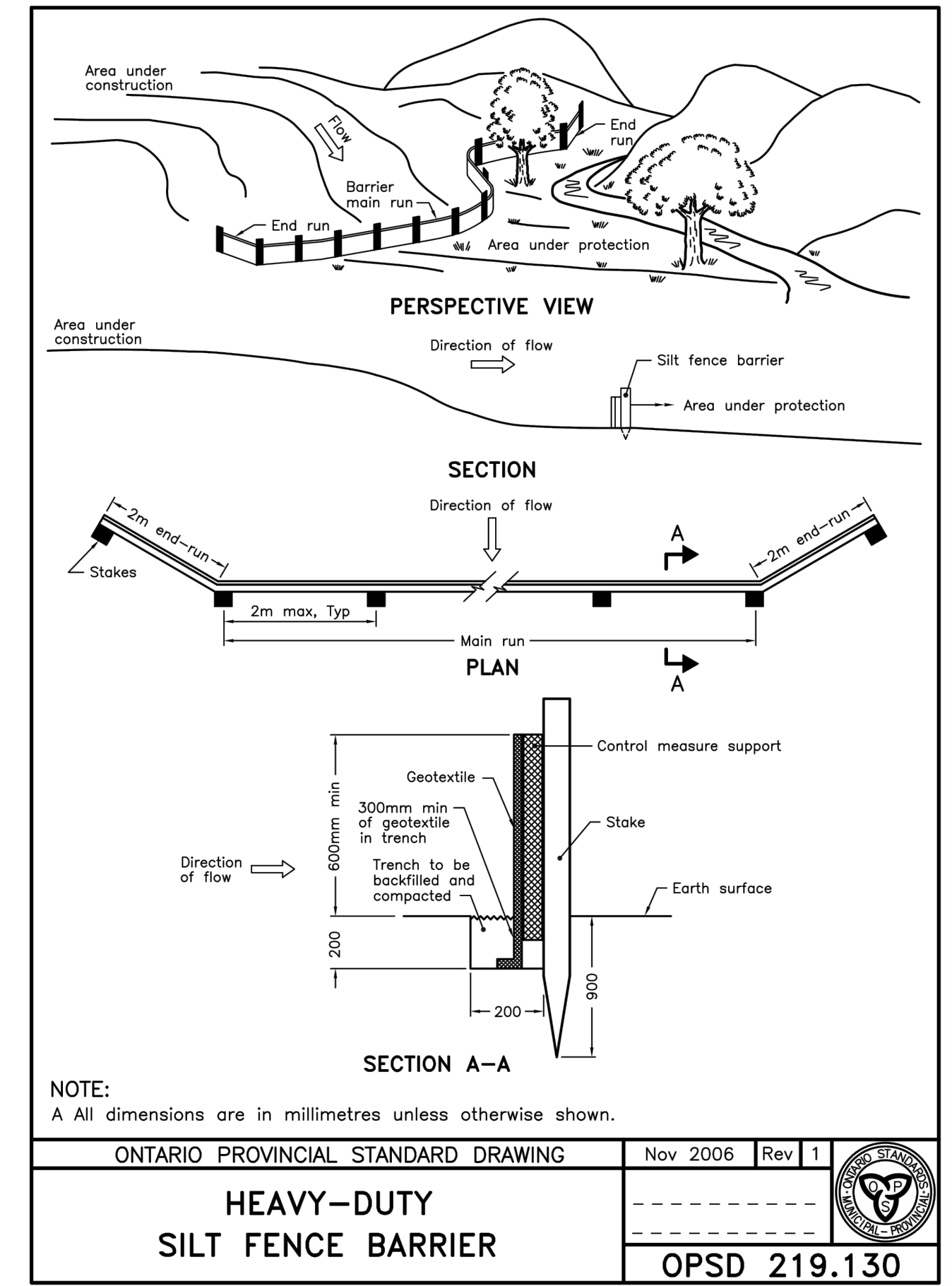
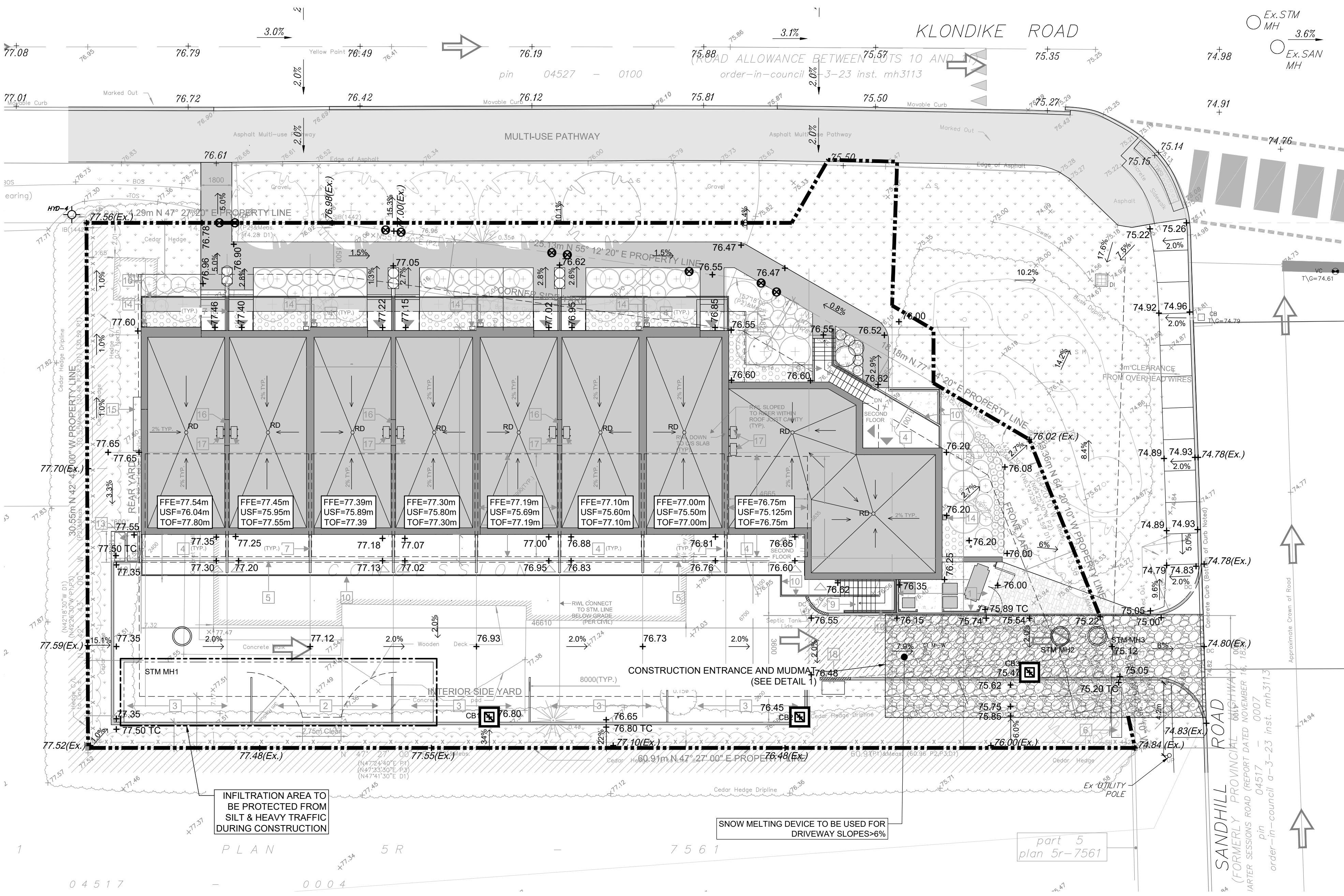
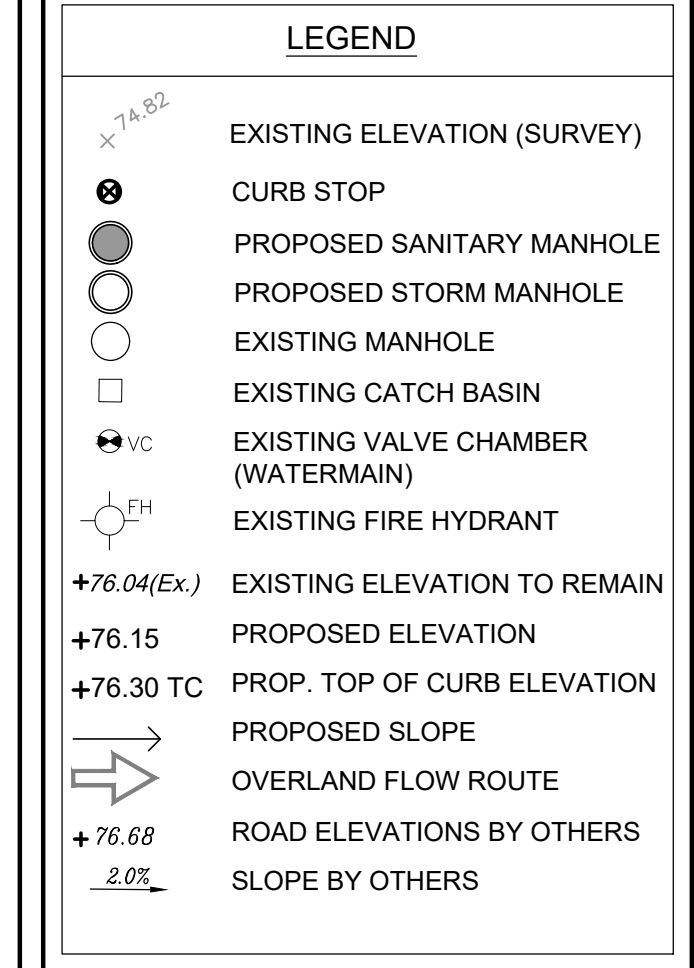
1. THE CONTRACTOR SHALL IMPLEMENT BEST MANAGEMENT PRACTICES, TO PROVIDE FOR PROTECTION OF THE AREA DRAINAGE SYSTEM AND THE RECEIVING WATERCOURSE, DURING CONSTRUCTION ACTIVITIES. THIS INCLUDES LIMITING THE AMOUNT OF EXPOSED SOIL, USING FILTER CLOTH UNDER THE GRATES OF CATCHBASINS AND MANHOLES, AND INSTALLING SILT FENCES AND OTHER EFFECTIVE SEDIMENT TRAPS. THE CONTRACTOR ACKNOWLEDGES THAT FAILURE TO IMPLEMENT APPROPRIATE EROSION AND SEDIMENT CONTROL MEASURES MAY BE SUBJECT TO PENALTIES IMPOSED BY ANY APPLICABLE REGULATORY AGENCY.
2. THE SEDIMENT CONTROL MEASURES SHALL ONLY BE REMOVED WHEN, IN THE OPINION OF THE ENGINEER, THE MEASURES ARE NO LONGER REQUIRED. NO CONTROL MEASURES MAY BE PERMANENTLY REMOVED WITHOUT PRIOR AUTHORIZATION FROM THE ENGINEER.
3. REGULAR INSPECTION AND MAINTENANCE OF THE EROSION AND SEDIMENT MEASURES SHALL BE UNDERTAKEN. THE IMPLEMENTATION AND ADJUSTMENT AND/OR CORRECTIVE MAINTENANCE OF THE EROSION AND SEDIMENT MEASURES IS AN INTEGRAL PART OF THE PLAN AND MUST BE PERFORMED.
4. GEOTEXTILE FILTER FABRIC SHALL BE PLACED BETWEEN THE STRUCTURE FRAME AND COVER FOR ALL MANHOLES, CATCHBASINS, AND CATCHBASIN MANHOLES IN THE VICINITY OF WORK.
5. THE CONTRACTOR SHALL MAINTAIN ADJACENT ROADS IN A CLEAN CONDITION AT ALL TIMES.
6. PROVIDE MUD MATS AT SITE CONSTRUCTION ENTRANCE(S) AND EGRESS(S).

DRAWING REFERENCES

1. THE SITE PLAN MUST BE READ IN CONJUNCTION WITH ARCHITECTURAL, LANDSCAPING, ELECTRICAL & STRUCTURAL PLANS.
2. FOR SERVICING PLAN, REFER DRAWING C101.
3. FOR GRADING PLAN, REFER DRAWING C102.

LEGAL DESCRIPTION:
PLAN OF SURVEY & TOPOGRAPHIC INFORMATION PREPARED BY ANNIS, O'SULLIVAN, VOLLEBEKK LTD. (O.S.), IDENTIFIED AS PART OF LOT 10, CONCESSION 4 GEOGRAPHIC TOWNSHIP OF MARCH CITY OF OTTAWA

BEARING NOTE:
BEARINGS ARE GRID, DERIVED FROM CAN-NET 2016 REL TIME NETWORK GPS OBSERVATIONS, MTM ZONE 9 (76° 30' WEST LONGITUDE) NAD-83 (ORIGINAL).



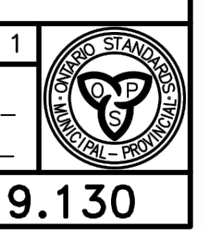
JAIN
Jain Infrastructure Consultants Ltd.
7405 EAST DANBRO CRESCENT
MISSISSAUGA, ON L5N 6P8
TEL: (905) 285-9900, FAX: (905) 567-5246
Email: yayub@jainconsultants.com

PROJECT
1050 KLONDIKE ROAD
OTTAWA, ONTARIO, K2K 1X7

DRAWING TITLE
EROSION CONTROL PLAN & DETAILS

SCALE: 1:150
DATE: Jun. 27, 22
DRAWN BY: CC
CHECKED BY: YA

DWG No.
C103



ONTARIO PROVINCIAL STANDARD DRAWING
HEAVY-DUTY SILT FENCE BARRIER
Nov 2006 Rev 1
OPSD 219.130