

PAVEMENT DESIGN
 40mm SUPERPAVE 12.5 ASPHALTIC CONCRETE
 50mm SUPERPAVE 13.0 ASPHALTIC CONCRETE
 150mm OPSS GRANULAR A CRUSHED STONE
 450mm OPSS GRANULAR B TYPE II

ANY DISTURBED AREA DURING CONSTRUCTION TO BE RESTORED TO THE ORIGINAL CONDITION OR BETTER TO THE SATISFACTION OF THE AUTHORITIES HAVING JURISDICTION

CONTRACTOR TO VERIFY THE PRECISE LOCATIONS AND INVERT ELEVATIONS OF EX. UNDERGROUND SERVICES AND EX. UTILITIES PRIOR TO STARTING CONSTRUCTION

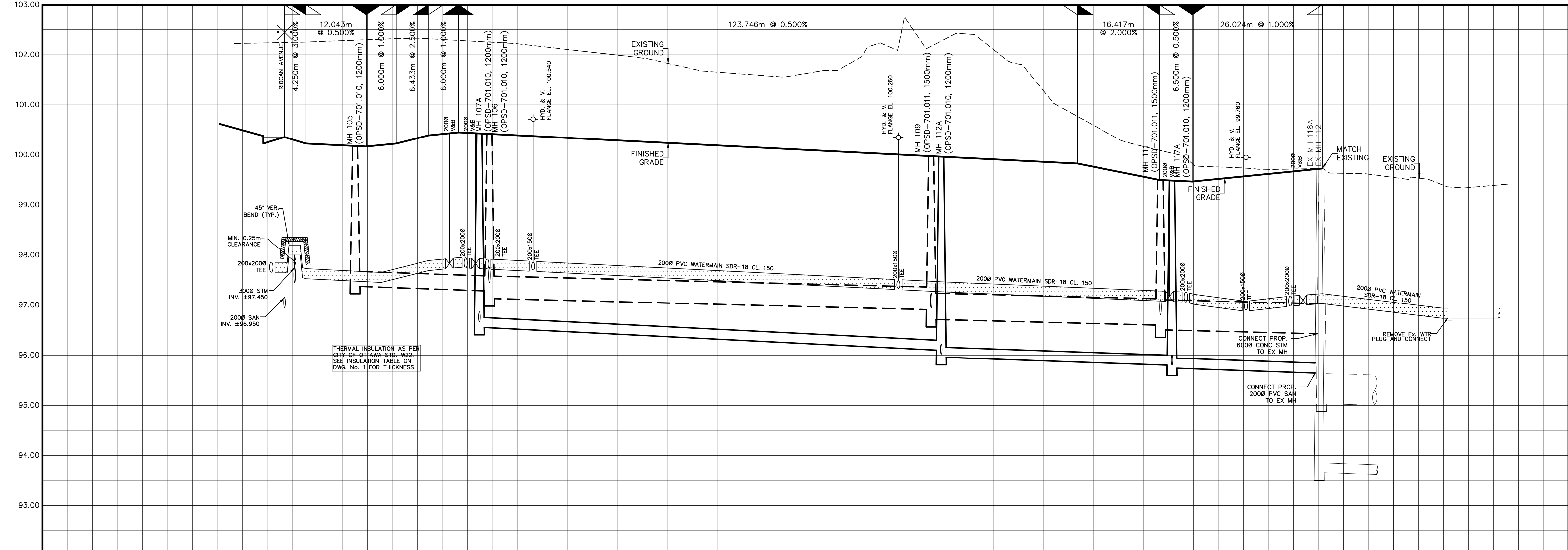
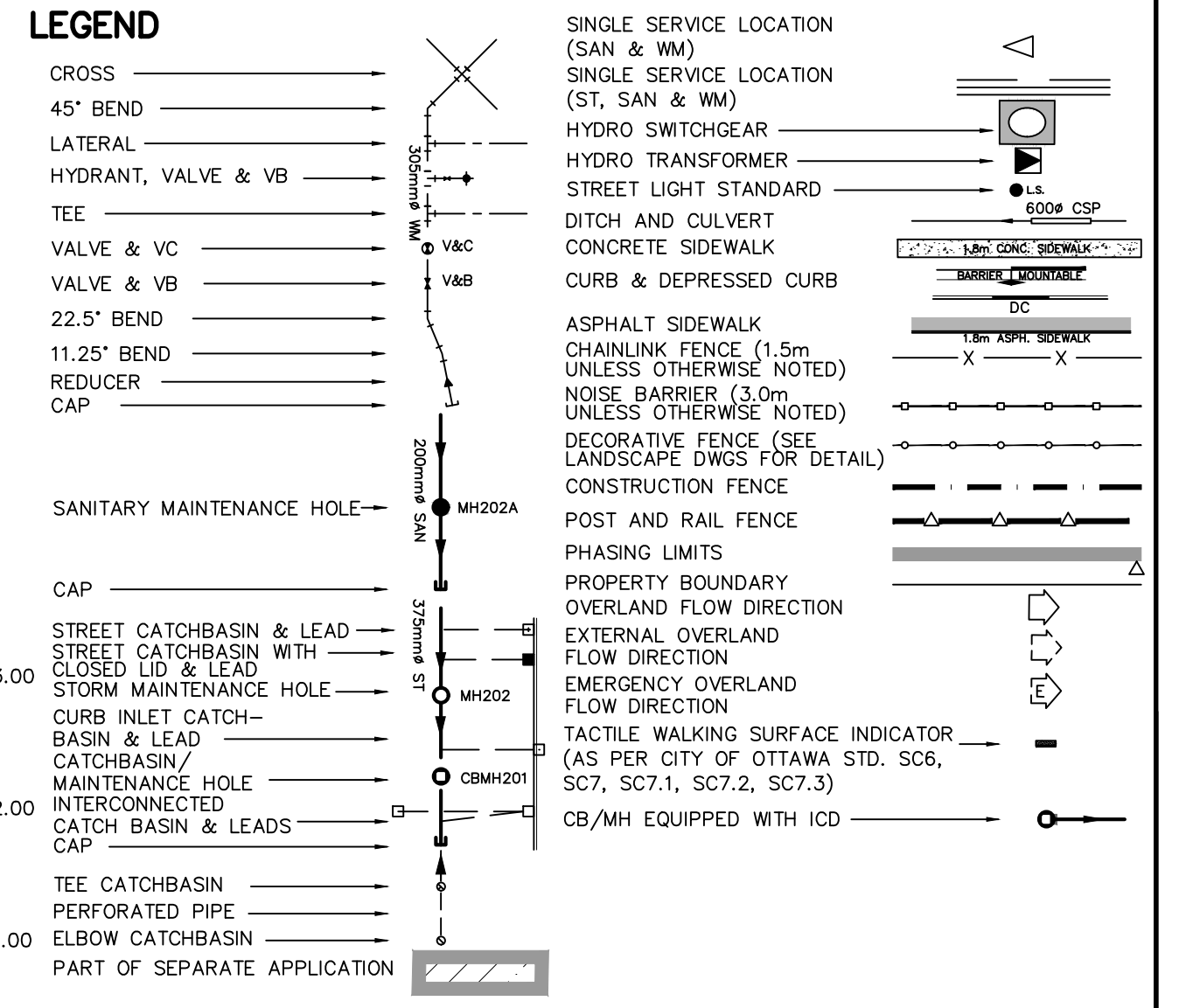
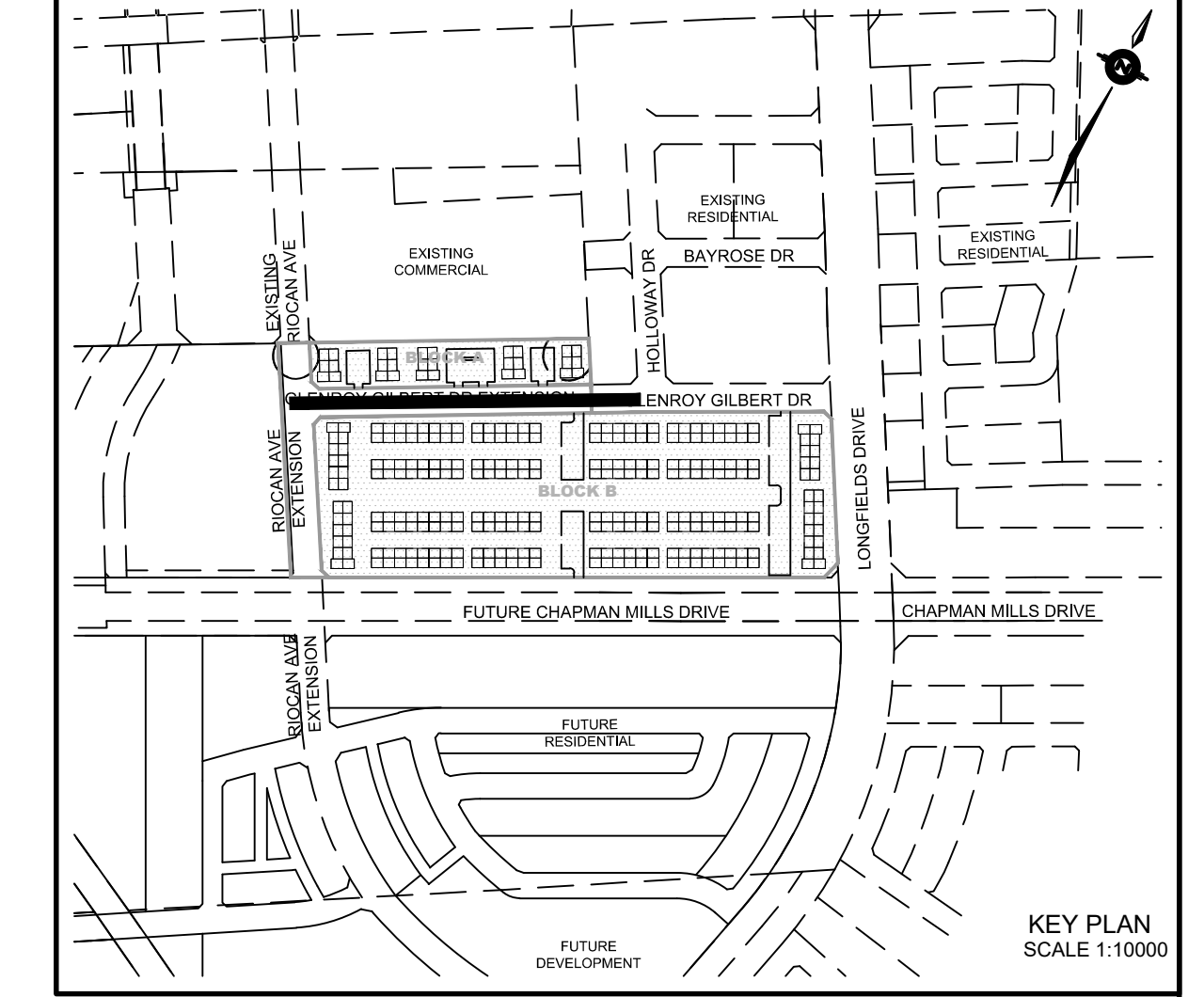
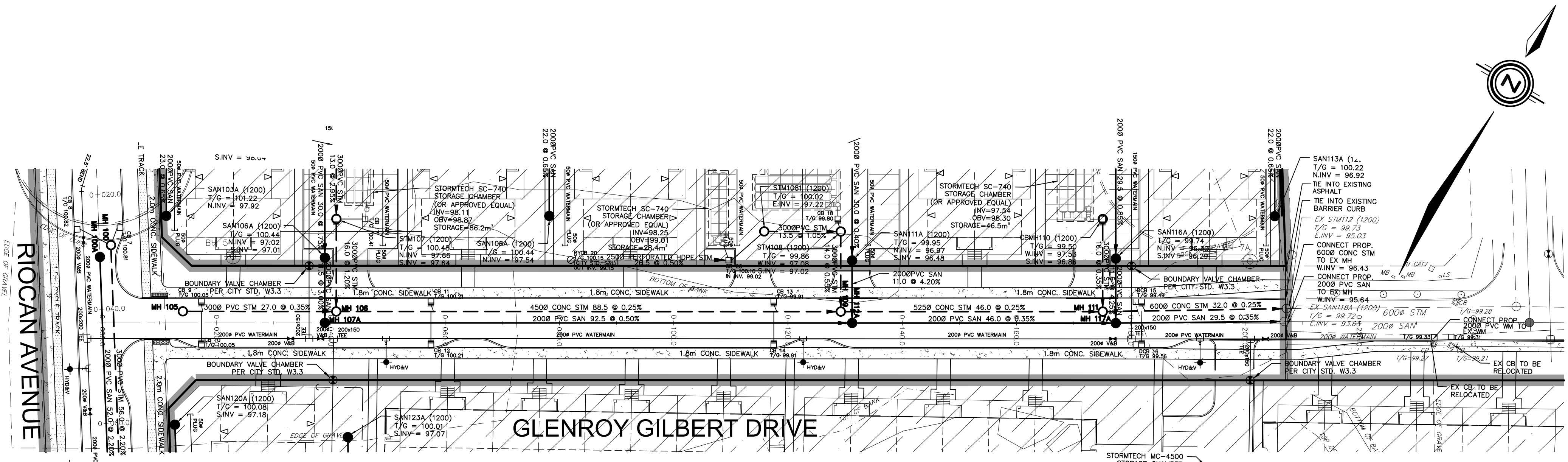
NOTE:
 ALL EXISTING TREES, SHRUBS ETC. WITHIN LOTS, BLOCKS AND ROADS TO BE REMOVED, UNLESS OTHERWISE NOTED

PERMISSION REQUIRED FOR WORK ON ADJACENT LANDS

NOTE: CATCHBASIN DATA
 FOR CATCHBASIN DATA, REFER TO DRAWING No. 3 FOR DETAIL.

NOTE:
 FOR WATERMAIN STUBS, 2.4m MIN. COVER TO BE PROVIDED

NOTE-RE: TEST PIT/BOREHOLE EXCAVATIONS
 ANY DISTURBED MATERIAL ENCOUNTERED BELOW THE SUBGRADE LEVEL WITHIN A BUILDING FOOTPRINT TO BE SUB-EXCAVATED AND BACKFILLED WITH COMPACTED ENGINEERED FILL AS PER GEOTECHNICAL ENGINEERS RECOMMENDATION.



NOT FOR CONSTRUCTION

No.	BY	DATE	DESCRIPTION
1	S.L.M.	22-06-10	1ST SUBMISSION

TOPOGRAPHIC INFORMATION
 TOPOGRAPHIC INFORMATION PROVIDED BY STANTEC GEOMATICS LTD., PROJECT No. 161614291-111, DATED MARCH 1, 2022

SITE PLAN INFORMATION
 SITE PLAN PROVIDED BY SRN ARCHITECTS LTD., PROJECT No. S21001, DATED FEBRUARY 3, 2022

LEGAL INFORMATION
 CALCULATED M-PLAN PROVIDED BY STANTEC GEOMATICS LTD., PROJECT No. 161614291-111, DATED MARCH 1, 2022

BENCH MARK
 ELEVATIONS ARE REFERRED TO THE CANADIAN GEODETIC VERTICAL DATUM (CGVD-1928:1978) AND ARE DERIVED FROM BENCHMARK MONUMENT No. 196530071*, HAVING A PUBLISHED ELEVATION OF 99.742 METRES

MINTO COMMUNITIES INC. BARRHAVEN TOWN CENTRE
 GLENROY GILBERT DRIVE & RIOCAN AVENUE ROADWAY EXTENSIONS

DSEL
 120 Ier Road Unit 103
 Stittsville, Ontario, K2S 1E9
 Tel. (613) 836-0856
 Fax. (613) 836-7183
 www.DSEL.ca

S.L. MERRICK
 100186523
 2022-06-10
 PROVINCE OF ONTARIO

TOP OF WATERMAIN	2000 PVC SAN 92.5 @ 0.50% SDR-35	2000 PVC SAN 46.0 @ 0.35% SDR-35	2000 PVC SAN 29.5 @ 0.35% SDR-35	EX. 2000 SAN	TOP OF WATERMAIN
SANITARY INVERT	4500 CONC STM 88.5 @ 0.25% 65-D	5250 CONC STM 46.0 @ 0.25% 65-D	6000 CONC STM 32.0 @ 0.25% 65-D	EX. 6000 STM	SANITARY INVERT
STORM INVERT					STORM INVERT
PROPOSED GRADES					PROPOSED GRADES
CENTERLINE CHAINAGE					CENTERLINE CHAINAGE

PLAN AND PROFILE OF
GLENROY GILBERT DRIVE
 (STA 0+000.000 TO STA 0+240.000)

DRAWN BY: AM CHECKED BY: BC PROJECT No. **15-816**
 DESIGNED BY: BC CHECKED BY: SM
 SCALE: HORIZ. 1:500 0 5 10 15 20 SHEET No. **5**
 VERT. 1:50 0 0.5 1.0 1.5 2.0

CITY FILE No. D07-XX-XX-XXXX