




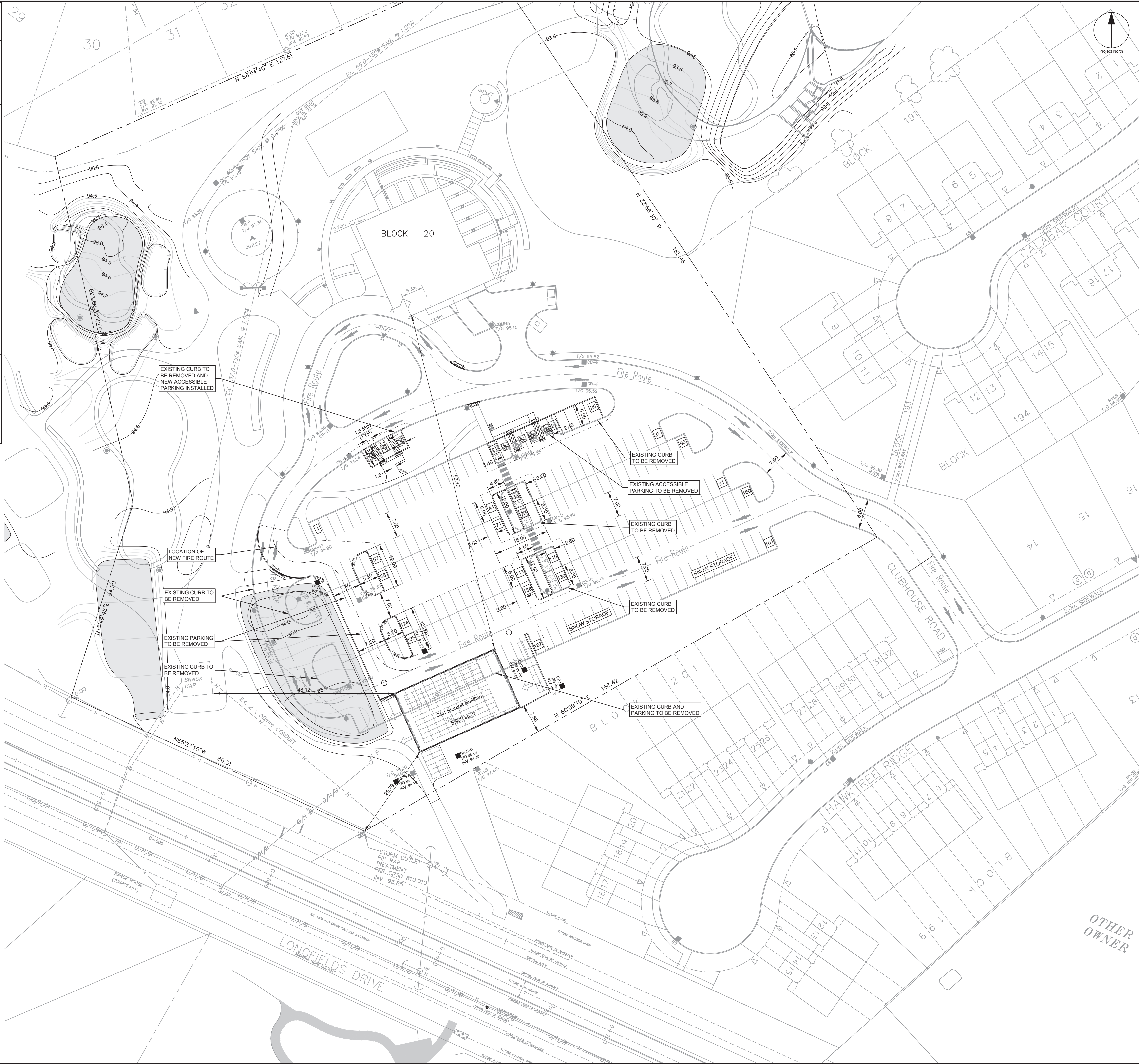


Zoning By-law 2008-250	Accessory Structures Section 55	
	Existing	Provided
Front Lot Line Setback	7.5 m	>7.5 m
Interior Side Lot Line or Rear Lot Line not abutting a street	0.6 m	>0.6 m
Maximum Height	6.0 m	5.9 m
Parking		
Parking		
1 space/100m2 GFA + 4 spaces/hole	89	187
	7	7
Accessible Parking	Type A - 3	Type A - 3
4% of provided (parking)	Type B - 4	Type B - 4
Pre-development Parking		
Accessible Parking	3	
Standard Parking	214	
Bicycle Parking		
1 space/1500 m2 GFA	1	2
Minimum Driveway Width	6.0 m	7.5 m
Minimum Aisle	6.7 m	7.0 m
15% of parking lot (3m buffer + interior landscaping)		
Landscaped Area (parking)	±1,650m2	
Full Site	±31,848m2	
Cart Storage Facility GFA	548 m2	
Snack Bar GFA	±69 m2	
Main Building GFA	±724m2	
Lot Coverage	±1,341m2	4.20%
Landscaped Open Space (full site)	± 22,217m2	69.80%
Paved Surface	±8,290m2	26.00%

GENERAL LEGEND

-  BARRIER CURB
-  DEPRESSED BARRIER CURB
-  CONCRETE SIDEWALK
-  TACTILE WALKING SURFACE INDICATOR
-  ASPHALT SIDEWALK / PATHWAY



CLIENT

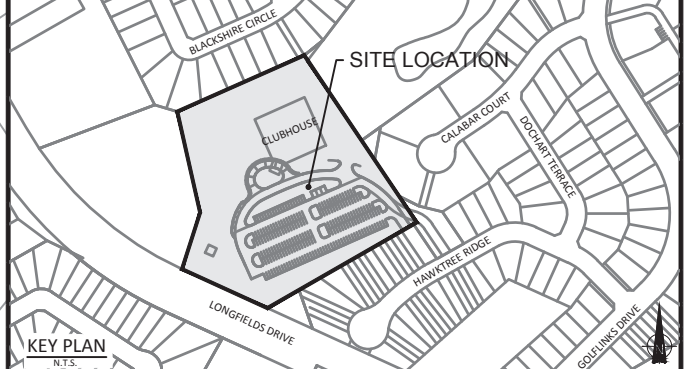


COPYRIGHT
 This drawing has been prepared solely for the intended use. This any reproduction or distribution for any purpose other than authorized by IBI Group is forbidden. Written dimensions shall have precedence over scaled dimensions. Contractors shall verify and be responsible for all dimensions and conditions on the job, and IBI Group shall be relieved of any variations from the dimensions and conditions shown on the drawing. Shop drawings shall be submitted to IBI Group for general concurrence before proceeding with fabrication.

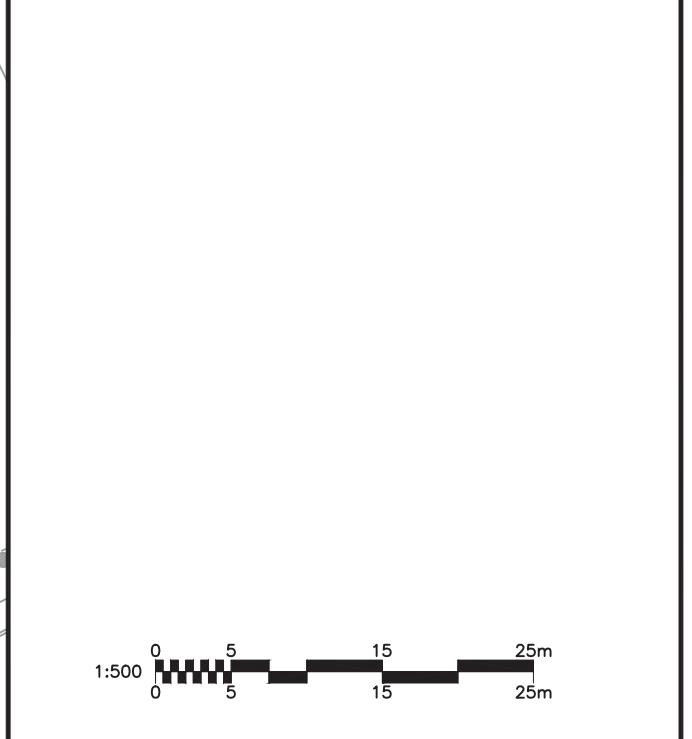
IBI Group Professional Services (Canada) Inc.
 is a member of the IBI Group of companies

ISSUES	No.	DESCRIPTION	DATE
	1	ISSUED FOR CITY REVIEW	2021-06-16
	2	REVISED AS PER CITY COMMENTS	2021-06-16
	3	ISSUED FOR SPA	2022-06-23
	4	REVISED AS PER CITY COMMENTS	2022-06-23



NOT FOR CONSTRUCTION
 010, FOR NOTES, LEGEND, CB TABLE, AND DETAILS



CONSULTANTS



SEAL

IBI GROUP
 400 - 333 Preston Street
 Ottawa ON K1S 5N4 Canada
 tel 613 225 5111 fax 613 225 5866
 ibigroup.com

PROJECT
 STONEBRIDGE CLUBHOUSE
 68 HAWKTREE RIDGE,
 OTTAWA, ON K2J 5N3

PROJECT NO: 122507
 DRAWN BY: D.P.S.
 PROJECT MGR: R.M.

CHECKED BY: R.M.
 APPROVED BY: D.G.Y.

SHEET TITLE
SITE PLAN

SHEET NUMBER
C-050

ISSUE
4