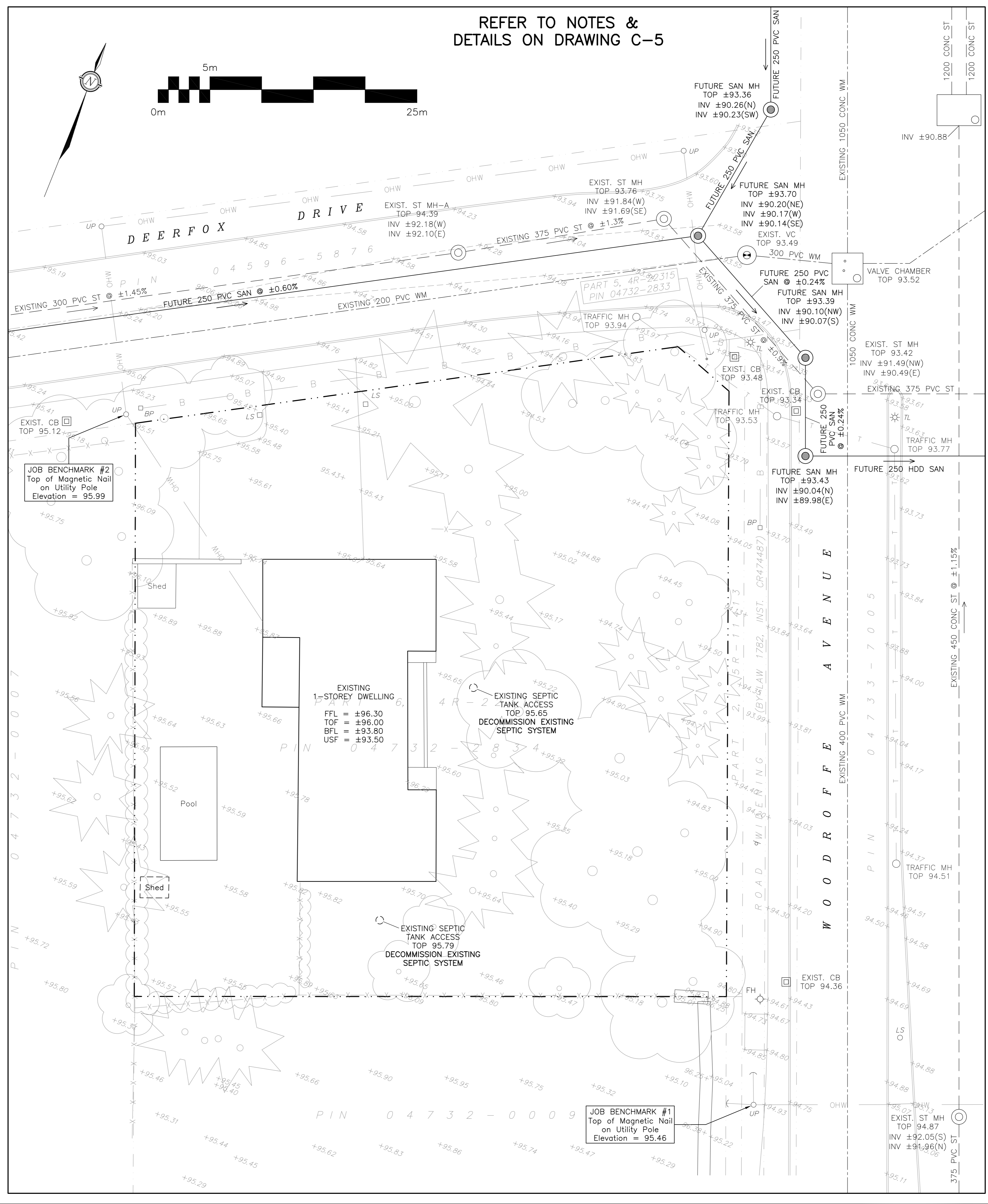


REFER TO NOTES &
DETAILS ON DRAWING C-5



JOB BENCHMARK #2
Top of Magnetic Nail
on Utility Pole
Elevation = 95.99

EXISTING
1-STOREY DWELLING
FFL = ±96.30
TOF = ±96.00
BFL = ±93.80
USF = ±93.50

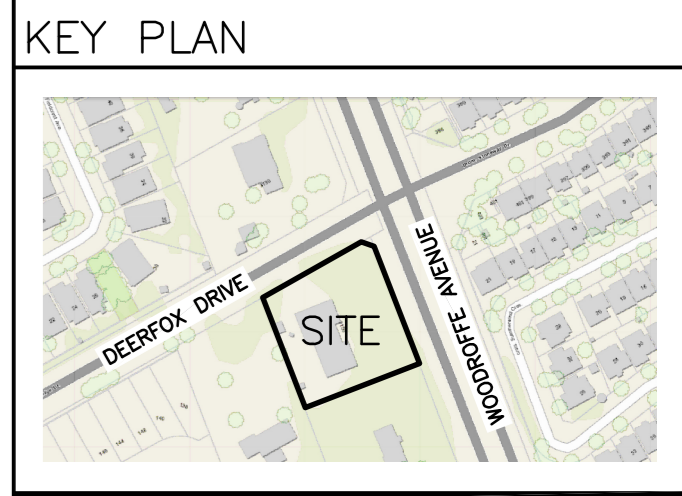
EXISTING SEPTIC
TANK ACCESS
TOP 95.65
DECOMMISSION EXISTING
SEPTIC SYSTEM

EXISTING SEPTIC
TANK ACCESS
TOP 95.79
DECOMMISSION EXISTING
SEPTIC SYSTEM

JOB BENCHMARK #1
Top of Magnetic Nail
on Utility Pole
Elevation = 95.46

LEGEND

FFL	FINISHED FLOOR ELEVATION
TOF	TOP OF FOUNDATION
BFL	BASEMENT FLOOR ELEVATION
USF	UNDERSIDE OF FOOTING
- - - -	PROPERTY LINE
CB	CATCH-BASIN
MH	STORM MANHOLE
CB/MH	CATCH-BASIN/MANHOLE
MH	SANITARY MANHOLE
VC	VALVE CHAMBER
FH	FIRE HYDRANT
CS	CURB STOP & STANDPOST
SAN	SANITARY SEWER
ST	STORM SEWER
WS/WM	WATER SERVICE/WATERMAIN
SPL	SPRINGLINE OF PIPE
INV	INVERT OF PIPE
- - - -	EXISTING GRADE ELEVATION
- - - -	150mm BARRIER CURB

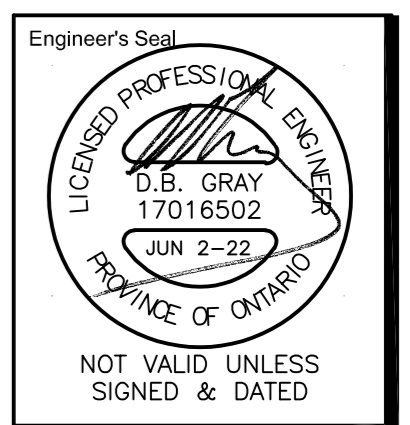


No.	DATE	REVISION
2	JUN 2-22	ISSUED FOR APPROVAL
1	MAY 16-22	ISSUED FOR COORDINATION

D. B. GRAY ENGINEERING INC.
Stormwater Management - Grading & Drainage - Storm & Sanitary Sewers - Watermain
700 Long Point Circle
Ottawa, Ontario
613-425-8044
d.gray@dbgrayengineering.com

Project
EXHALO SPA
3150 WOODROFFE AVENUE
OTTAWA, ONTARIO

Drawing Title
**EXISTING CONDITIONS,
REMOVALS &
DECOMMISSIONING**



Drawn D.B.G.
H. Scale 1:200
V. Scale
Date MAR 21-22
Job No. 22017

Drawing No.
**C-2
of 7**

NOT VALID UNLESS
SIGNED & DATED