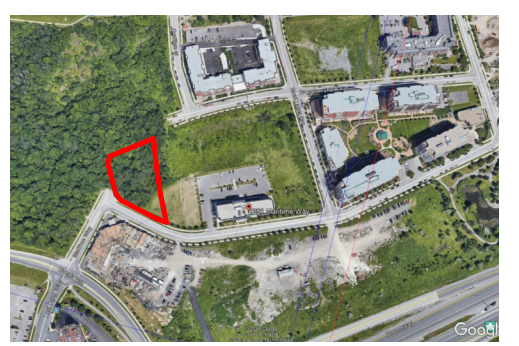
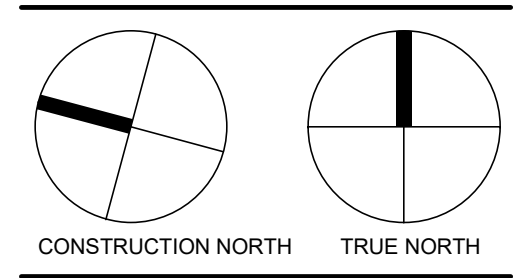


NO.	ISSUED	DATE
1	SITE PLAN APPROVAL	2022.01.19



THIS SITE PLAN IS BASED UPON AND MUST BE READ IN CONJUNCTION WITH THE REGISTERED PLAN CHAMBERLAIN ARCHITECT SERVICES LIMITED ACCEPTS NO RESPONSIBILITY FOR THE ACCURACY, OR COMPLETENESS OF THE DATA SUPPLIED AND SUCH DATA IS NOT INCLUDED UNDER SEALS OF CERTIFICATION IF ANY.
DO NOT SCALE DRAWINGS. USE ONLY DRAWINGS MARKED "ISSUED FOR CONSTRUCTION". VERIFY CONFIGURATIONS AND DIMENSIONS ON SITE BEFORE BEGINNING WORK. NOTIFY ARCHITECT IMMEDIATELY OF ANY ERRORS, OMISSIONS OR DISCREPANCIES.
CHAMBERLAIN ARCHITECT SERVICES LIMITED AND CHAMBERLAIN CONSTRUCTION SERVICES LIMITED HAVE SIMILAR OWNERSHIP.
CHAMBERLAIN ARCHITECT SERVICES LIMITED HAS COPYRIGHT. CONSTRUCTING A SUBSTANTIALLY SIMILAR BUILDING WITHOUT PERMISSION MAY INFRINGE THE COPYRIGHT OWNERS RIGHTS. MAKING MINOR CHANGES TO PLANS DOES NOT NECESSARILY AVOID COPYRIGHT INFRINGEMENT. INNOCENT INFRINGEMENT IS NOT A DEFENSE TO COPYRIGHT INFRINGEMENT. ©
SEAL



**KANATA HAMPTON
INN & SUITES**

1305 MARITIME WAY,
KANATA, ON

SHEET NAME

SITE PLAN

START DATE
SEPT 19, 2019

DRAWN BY
LGJ, DM, MOR,NAL

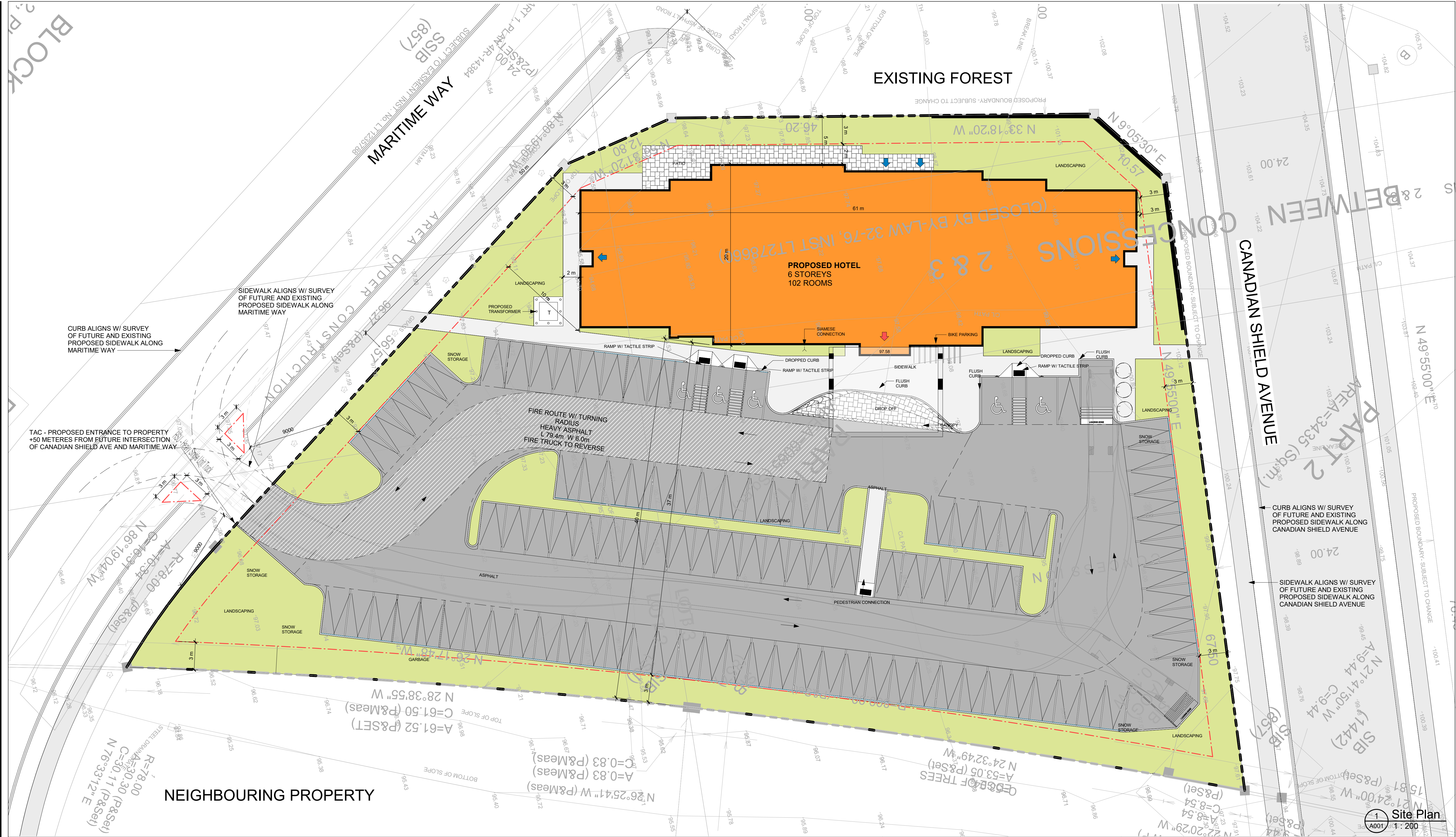
CHECKED BY
SM

SCALE
As indicated

PROJECT NO.
117079

DRAWING

A001



GENERAL PROVISIONS			PARKING REQUIREMENTS			SITE STATISTICS (ACRES)			PARKING SCHEDULE			NOTES:		
ZONE MCS H[35] – 200 - 250 CONSOLIDATION – PART 10 MIXED USE			COUNT			DESCRIPTION			TYPE			• IT IS RESPONSIBILITY OF THE APPLICANT TO COMPLY WITH THE SEWER USE BY-LAW AND OBTAIN ALL APPROVALS/PERMITS FROM THE CITY OF OTTAWA WATER SERVICES DEPARTMENT FOR ANY PROPOSED TEMPORARY OR PERMANENT DISCHARGE OF GROUNDWATER INTO THE MUNICIPAL SEWER SYSTEMS AND WATERCOURSES;		
OTTAWA ZONING BY-LAW NO. 2017-295			• HOTEL			BUILDING FOOTPRINT			ACCESSIBLE STALL			• THE APPLICANT IS ALSO RESPONSIBLE FOR COMPLYING WITH ALL APPLICABLE PROVINCIAL REQUIREMENTS AND OBTAINING THE NECESSARY APPROVALS AND/OR PERMITS FROM THE MINISTRY OF THE ENVIRONMENT & CLIMATE CHANGE WITH REGARD TO ANY PROPOSED DEWATERING;		
LEGAL DESCRIPTION			= 1 BEDROOM = 1.0 PARKING SPOT			1074.13 m ²			5.2m x 3.6m			• ALL TREE PRESERVATION WITHIN THE RIGHT OF WAY LANDS SHALL BE IN ACCORDANCE WITH LANDSCAPE DRAWINGS AND TREE PRESERVATION DRAWINGS AND REPORTS, APPROVED BY CITY OF OTTAWA'S URBAN FORESTS;		
KANATA AVENUE PIN 04507-0828 PART 2, PLAN 4R-9182			= 102 BEDROOM			1074.13 m ²			5.2m x 2.6m			• ALL TREE PRESERVATION WITHIN THE RIGHT OF WAY LANDS SHALL BE IN ACCORDANCE WITH LANDSCAPE DRAWINGS AND TREE PRESERVATION DRAWINGS AND REPORTS, APPROVED BY CITY OF OTTAWA'S URBAN FORESTS;		
*NOTE: BETWEEN CONCESSIONS 2 & 3			= 102 PARKING SPOTS			1074.13 m ²			TOTAL			• THE APPLICANT IS ALSO RESPONSIBLE FOR COMPLYING WITH ALL APPLICABLE PROVINCIAL REQUIREMENTS AND OBTAINING THE NECESSARY APPROVALS AND/OR PERMITS FROM THE MINISTRY OF THE ENVIRONMENT & CLIMATE CHANGE WITH REGARD TO ANY PROPOSED DEWATERING;		
ZONING DATA			TOTAL PARKING REQUIRED = 102 PARKING SPOTS			HARD LANDSCAPE			LOADING			• ALL TREE PRESERVATION WITHIN THE RIGHT OF WAY LANDS SHALL BE IN ACCORDANCE WITH LANDSCAPE DRAWINGS AND TREE PRESERVATION DRAWINGS AND REPORTS, APPROVED BY CITY OF OTTAWA'S URBAN FORESTS;		
REQUIRED			SIZES:			ASHPALT			BIKE - HORIZONTAL			• ALL TREE PRESERVATION WITHIN THE RIGHT OF WAY LANDS SHALL BE IN ACCORDANCE WITH LANDSCAPE DRAWINGS AND TREE PRESERVATION DRAWINGS AND REPORTS, APPROVED BY CITY OF OTTAWA'S URBAN FORESTS;		
LOT WIDTH			• TYPICAL PARKING			70.46 m ²			1.8 x 0.6m			• ALL TREE PRESERVATION WITHIN THE RIGHT OF WAY LANDS SHALL BE IN ACCORDANCE WITH LANDSCAPE DRAWINGS AND TREE PRESERVATION DRAWINGS AND REPORTS, APPROVED BY CITY OF OTTAWA'S URBAN FORESTS;		
LOT AREA			• ACCESSIBLE PARKING			124.39 m ²			TOTAL			• ALL TREE PRESERVATION WITHIN THE RIGHT OF WAY LANDS SHALL BE IN ACCORDANCE WITH LANDSCAPE DRAWINGS AND TREE PRESERVATION DRAWINGS AND REPORTS, APPROVED BY CITY OF OTTAWA'S URBAN FORESTS;		
FSI			= TYPE A : 3.6 X 5.2			382.02 m ²			BIKE - HORIZONTAL			• ALL TREE PRESERVATION WITHIN THE RIGHT OF WAY LANDS SHALL BE IN ACCORDANCE WITH LANDSCAPE DRAWINGS AND TREE PRESERVATION DRAWINGS AND REPORTS, APPROVED BY CITY OF OTTAWA'S URBAN FORESTS;		
MIN. SETBACKS			*NOTE: 10m MIN FRONT YARD & CORNER SIDE YARD SETBACK FOR SURFACE PARKING			3467.41 m ²			TOTAL			• ALL TREE PRESERVATION WITHIN THE RIGHT OF WAY LANDS SHALL BE IN ACCORDANCE WITH LANDSCAPE DRAWINGS AND TREE PRESERVATION DRAWINGS AND REPORTS, APPROVED BY CITY OF OTTAWA'S URBAN FORESTS;		
• FRONT YARD			BICYCLE SPOTS:			SOFT LANDSCAPE			TOTAL			• ALL TREE PRESERVATION WITHIN THE RIGHT OF WAY LANDS SHALL BE IN ACCORDANCE WITH LANDSCAPE DRAWINGS AND TREE PRESERVATION DRAWINGS AND REPORTS, APPROVED BY CITY OF OTTAWA'S URBAN FORESTS;		
• REAR YARD			= 1 PER 1000 SQM OF GROSS FLOOR AREA			LANDSCAPE			TOTAL			• ALL TREE PRESERVATION WITHIN THE RIGHT OF WAY LANDS SHALL BE IN ACCORDANCE WITH LANDSCAPE DRAWINGS AND TREE PRESERVATION DRAWINGS AND REPORTS, APPROVED BY CITY OF OTTAWA'S URBAN FORESTS;		
• INTERIOR SIDE YARD			= 6.092/ 1000			1531.53 m ²			TOTAL			• ALL TREE PRESERVATION WITHIN THE RIGHT OF WAY LANDS SHALL BE IN ACCORDANCE WITH LANDSCAPE DRAWINGS AND TREE PRESERVATION DRAWINGS AND REPORTS, APPROVED BY CITY OF OTTAWA'S URBAN FORESTS;		
• CORNER SIDE YARD			= 6.092 (7)			1531.53 m ²			TOTAL			• ALL TREE PRESERVATION WITHIN THE RIGHT OF WAY LANDS SHALL BE IN ACCORDANCE WITH LANDSCAPE DRAWINGS AND TREE PRESERVATION DRAWINGS AND REPORTS, APPROVED BY CITY OF OTTAWA'S URBAN FORESTS;		
LANDSCAPE BUFFER			TOTAL REQUIRED BICYCLE SPOTS = 7			Grand total: 8			TOTAL			• ALL TREE PRESERVATION WITHIN THE RIGHT OF WAY LANDS SHALL BE IN ACCORDANCE WITH LANDSCAPE DRAWINGS AND TREE PRESERVATION DRAWINGS AND REPORTS, APPROVED BY CITY OF OTTAWA'S URBAN FORESTS;		
• NOT ABUTTING A STREET												• ALL TREE PRESERVATION WITHIN THE RIGHT OF WAY LANDS SHALL BE IN ACCORDANCE WITH LANDSCAPE DRAWINGS AND TREE PRESERVATION DRAWINGS AND REPORTS, APPROVED BY CITY OF OTTAWA'S URBAN FORESTS;		
• ABUTTING A STREET												• ALL TREE PRESERVATION WITHIN THE RIGHT OF WAY LANDS SHALL BE IN ACCORDANCE WITH LANDSCAPE DRAWINGS AND TREE PRESERVATION DRAWINGS AND REPORTS, APPROVED BY CITY OF OTTAWA'S URBAN FORESTS;		
BUILDING HEIGHT												• ALL TREE PRESERVATION WITHIN THE RIGHT OF WAY LANDS SHALL BE IN ACCORDANCE WITH LANDSCAPE DRAWINGS AND TREE PRESERVATION DRAWINGS AND REPORTS, APPROVED BY CITY OF OTTAWA'S URBAN FORESTS;		
												• ALL TREE PRESERVATION WITHIN THE RIGHT OF WAY LANDS SHALL BE IN ACCORDANCE WITH LANDSCAPE DRAWINGS AND TREE PRESERVATION DRAWINGS AND REPORTS, APPROVED BY CITY OF OTTAWA'S URBAN FORESTS;		