

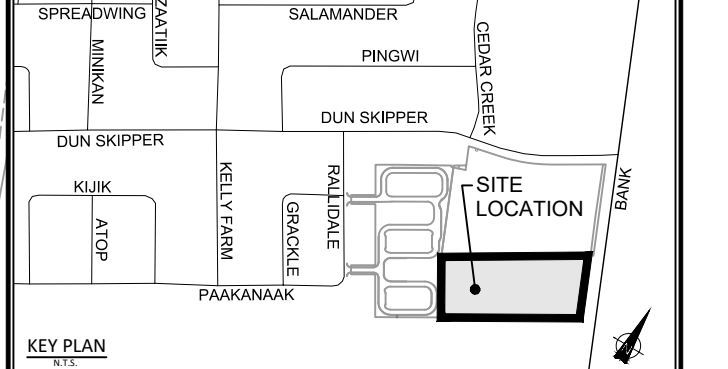
CLIENT
PATHWAYS SOUTH REGIONAL INC.

1737 WOODWARD DRIVE, OTTAWA, ON

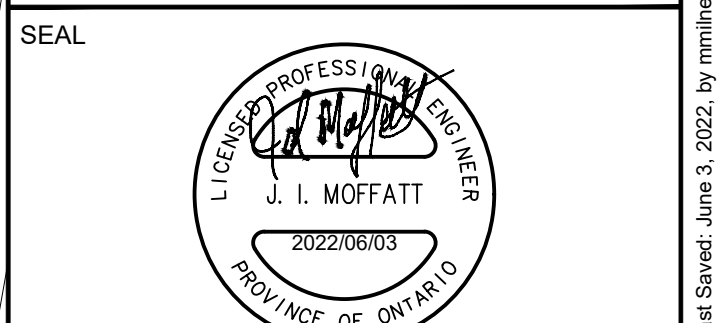
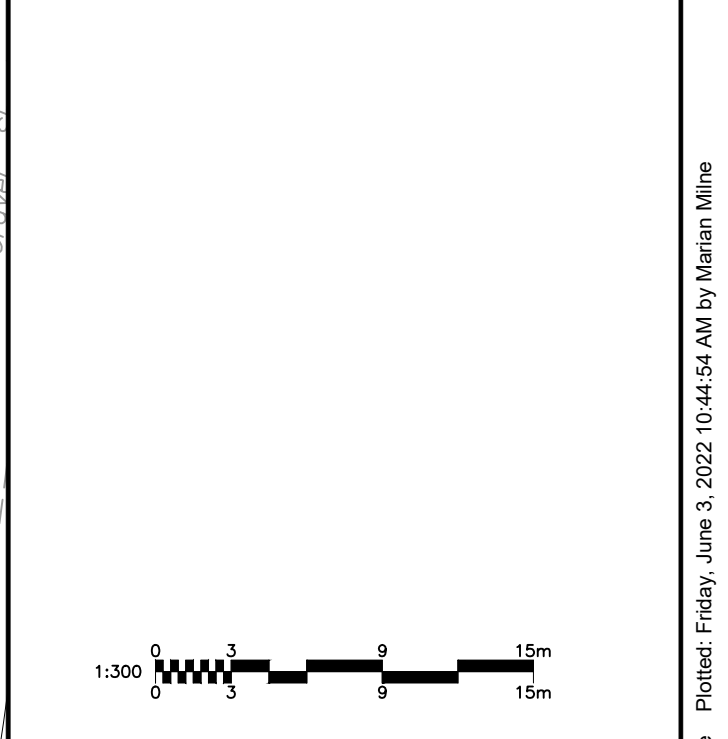
COPYRIGHT
This drawing has been prepared solely for the intended use. Any reproduction or distribution for any purpose other than that authorized by IBI Group is forbidden. Written dimensions shall have precedence over scaled dimensions. Contractors shall verify and be responsible for all dimensions and conditions on the job, and IBI Group shall be relieved of any liability from the dimensions and conditions shown on the drawing. Shop drawings shall be submitted to IBI Group for general confirmation before proceeding with fabrication.
IBI Group Professional Services (Canada) Inc.
is a member of the IBI Group of companies.

ISSUES		
No.	DESCRIPTION	DATE
1	SUBMISSION NO. 1 FOR CITY REVIEW	2022-06-03
2		
3		
4		
5		
6		
7		
8		

SEE 010, 011, 012 FOR NOTES, LEGEND, CB TABLE, STREET SECTIONS AND DETAILS



CONSULTANTS



PROJECT
4840 BANK STREET

PROJECT NO:
137175

DRAWN BY:
M.M.

CHECKED BY:
S.E.L.

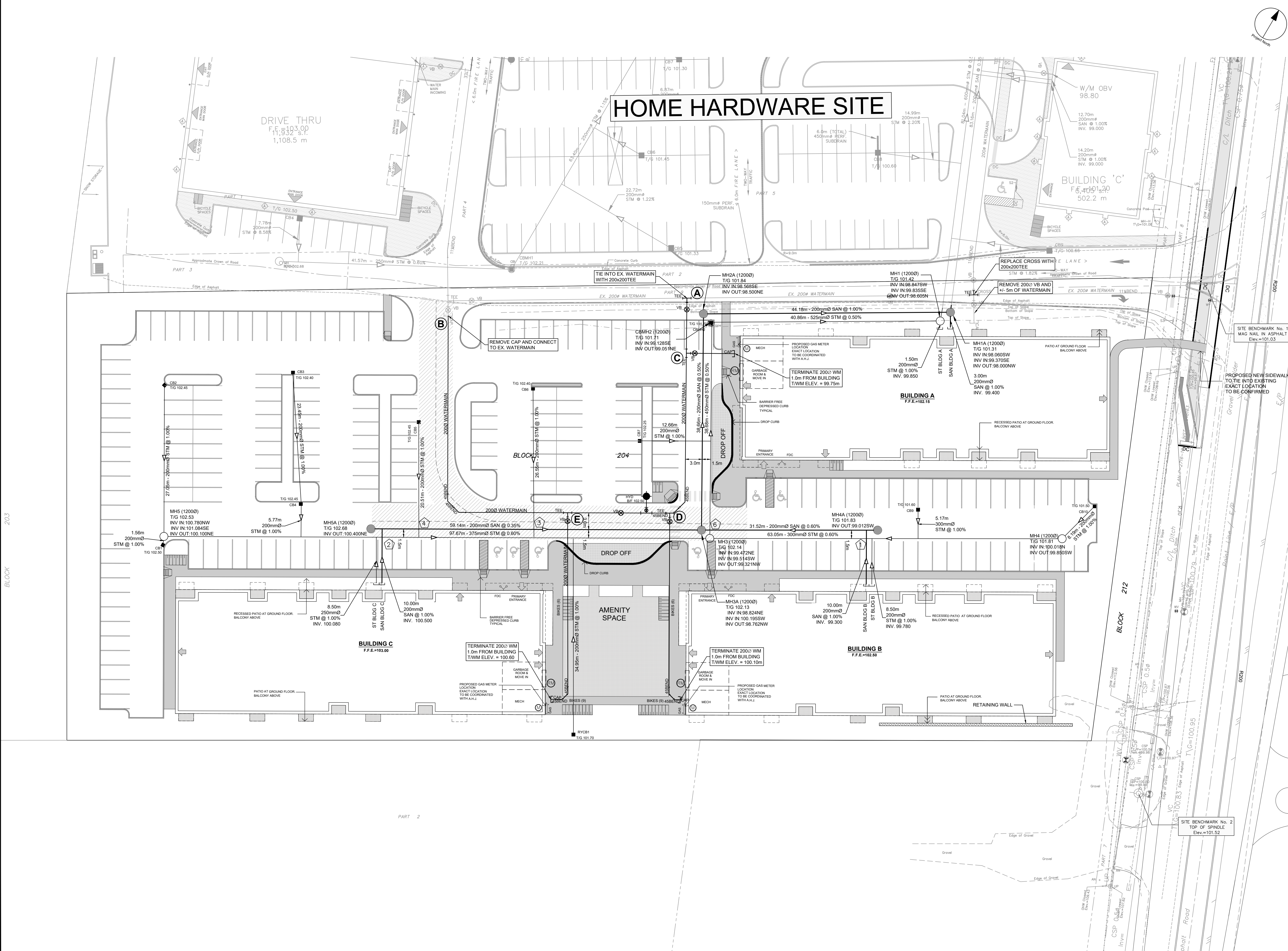
PROJECT MGR:
D.C.

APPROVED BY:
J.I.M.

SHEET TITLE
GENERAL PLAN OF SERVICES

SHEET NUMBER
C-001

ISSUE
1



203
BLOCK

212
BLOCK

CITY FILE No. D07-xx-xx-xxxx
SCALE CHECK
Printed: Friday, June 3, 2022 10:44:54 AM by Marian Milne
Last Saved: June 3, 2022 10:44:54 AM by Marian Milne
File Location: \\137175_Pathways_Sep7_0_Production\03_Design\04_Civil\Sheets\C001_GENERAL PLAN OF SERVICES.dwg

CITY PLAN No. xxxxx