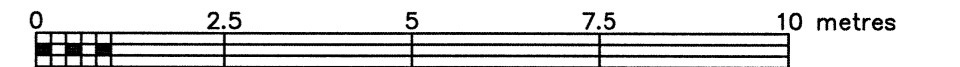


TOPOGRAPHIC PLAN OF SURVEY OF

PART OF LOT 20 REGISTERED PLAN 94 CITY OF OTTAWA

FARLEY, SMITH & DENIS SURVEYING LTD. 2021

Scale 1: 100



Metric Note

Distances on this plan are in metres and can be converted to feet by dividing by 0.3048.

Bearing Note

Bearings hereon are grid bearings derived from the Can-Net Real Time Network and are referred to the Central Meridian of MTM Zone 9 (76°30' West Longitude) Nad-83 (Original).

For bearing comparisons, a rotation of 0°20'00" counter-clockwise was applied to bearings on P2, P3 & P4.

Elevation Notes

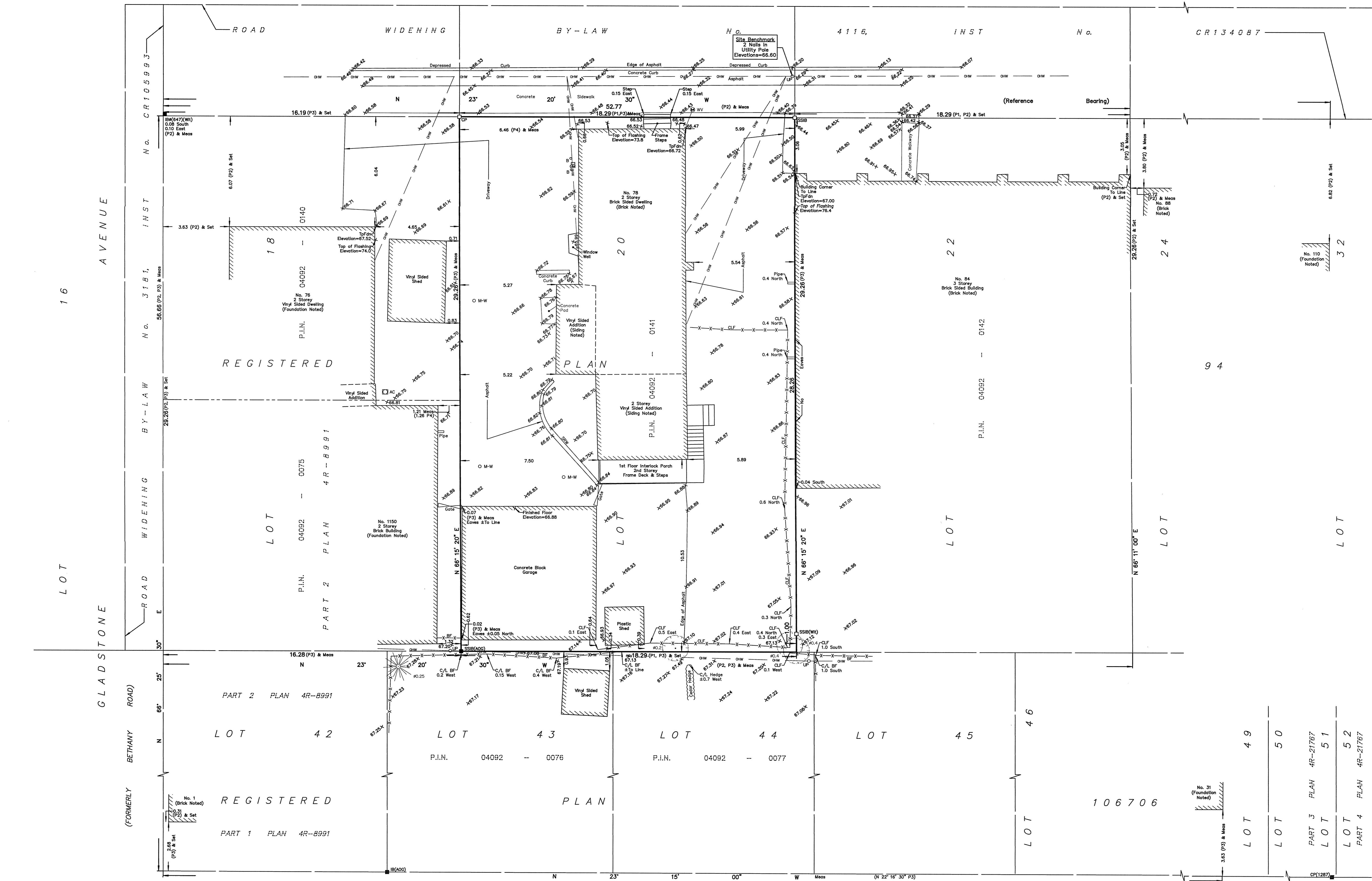
- Elevations shown are geodetic and are referred to Geodetic Datum CGVD-1928 :1978. (Monument No. 197534238)
- It is the responsibility of the user of this information to verify that the job benchmark has not been altered or disturbed and that its relative elevation and description agrees with the information shown on this drawing.

Utility Notes

- This drawing cannot be accepted as acknowledging all of the utilities and it will be the responsibility of the user to contact the respective utility authorities for confirmation.
- Only visible surface utilities were located.
- Underground utility data derived from City of Ottawa utility sheet reference: 2334p&2 (Sheets 5 & 6 of 11) & E-08-21C.
- Sanitary and storm sewer grades and inverts were compiled from: Field measurement and City of Ottawa Utility Sheets.
- A field location of underground plant by the pertinent utility authority is mandatory before any work involving breaking ground, probing, excavating etc.

Notes & Legend

- Denotes
- Survey Monument Planted
  - Survey Monument Found
  - Standard Iron Bar
  - Short Standard Iron Bar
  - Iron Bar
  - Round Iron Bar
  - Concrete Pin
  - Witness
  - Measured
  - Registered Plan 94
  - Plan by (AOG) dated June 8, 2020 (Job No. 20549-20)
  - Plan 4R-8991
  - Plan by (AOG) dated April 30, 1986
  - Maintenance Hole (Storm)
  - Maintenance Hole (Sanitary)
  - Underground Storm Sewer
  - Underground Sanitary Sewer
  - Underground Water
  - Overhead Wires
  - Utility Pole
  - Catch Basin
  - Water Valve
  - Gas Meter
  - Monitoring Well
  - Bollard
  - Air Conditioner
  - Diameter
  - Chain Link Fence
  - Board Fence
  - Stone Retaining Wall
  - Invert
  - Top of Grate
  - Underside of Eave
  - Top of Foundation
  - Centreline
  - Location of Elevations
  - Top of Concrete Curb/Retaining Wall Elevation
  - Property Line
- Deciduous Tree - The Symbol shown denotes location and trunk diameter only. Size of its root system/overhead canopy may be smaller/larger than the symbol size depicted on this plan.
- Coniferous Tree - The Symbol shown denotes location and trunk diameter only. Size of its root system/overhead canopy may be smaller/larger than the symbol size depicted on this plan.



WARNING: NO PERSON MAY COPY, REPRODUCE, DISTRIBUTE OR ALTER THIS PLAN IN WHOLE OR IN PART WITHOUT THE WRITTEN PERMISSION OF FARLEY, SMITH & DENIS SURVEYING LTD. © FARLEY, SMITH & DENIS SURVEYING LTD., 2021.

**Surveyor's Certificate**

I certify that:

- This survey and plan are correct and in accordance with the Surveyors Act, the Surveyors Act and the Regulations made under them.
- The survey was completed on the 6th day of December, 2021.

Date: Dec 6/21  
 Signature: Jamie Leslie  
 Ontario Land Surveyor

ASSOCIATION OF ONTARIO LAND SURVEYORS  
 PLAN SUBMISSION FORM  
 V-19040

THIS PLAN IS NOT VALID UNLESS IT IS AN EMBOSSED ORIGINAL COPY ISSUED BY THE SURVEYOR in accordance with Regulation 1025, Section 29 (3).

**FARLEY, SMITH & DENIS SURVEYING LTD.**

ONTARIO LAND SURVEYORS  
 CANADA LAND SURVEYORS

Unit 275, 30 COLONNADE ROAD, OTTAWA, ONTARIO K2E 7J6  
 TEL: (613) 727-8226 E-mail: fstdsurveys@bellnet.ca