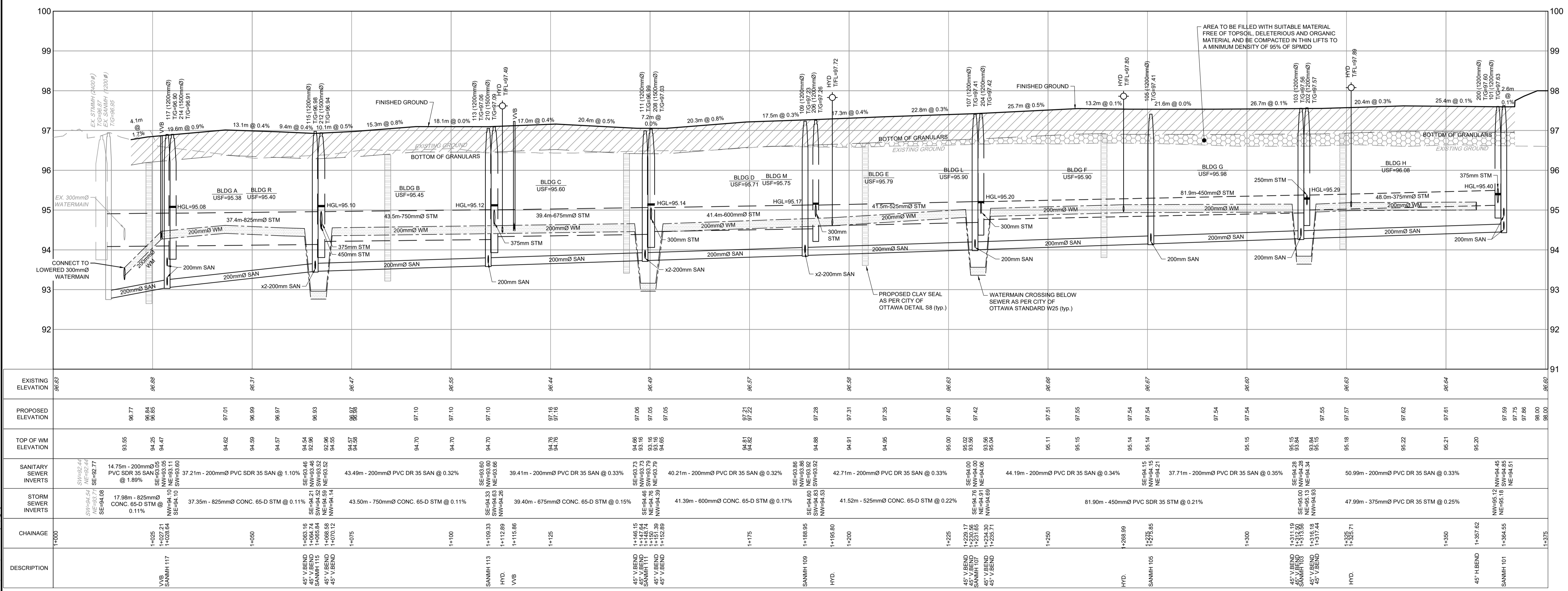
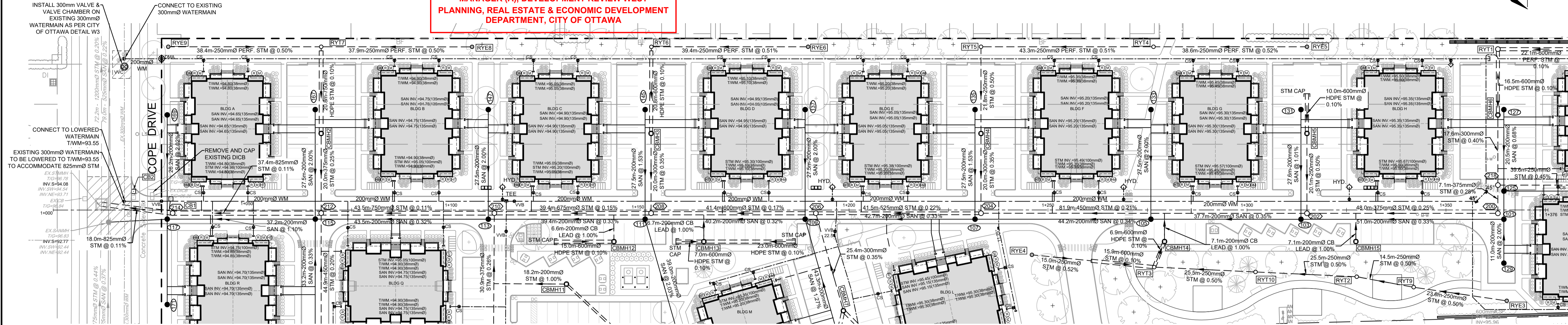
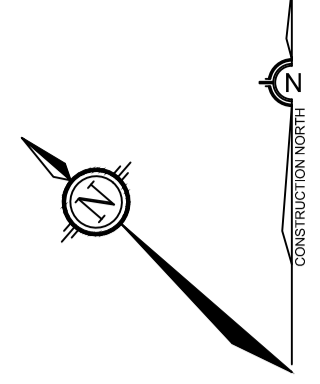


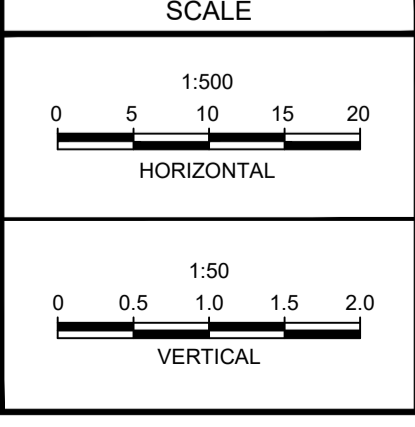
APPROVED
By Allison Hamlin at 12:47 pm, Jun 02, 2022

Allison Hamlin
ALLISON HAMLIN
MANAGER (A), DEVELOPMENT REVIEW WEST
PLANNING, REAL ESTATE & ECONOMIC DEVELOPMENT
DEPARTMENT, CITY OF OTTAWA



EXISTING ELEVATION	PROPOSED ELEVATION	TOP OF WM ELEVATION	SANITARY SEWER INVERTS	STORM SEWER INVERTS	CHAINAGE	DESCRIPTION
96.63	96.77	93.95	SV=92.44 NE=92.44 SE=92.77	SV=94.54 NE=93.71 SE=94.08	1+000	EXISTING WATERMAIN
96.68	96.84	94.25	14.75m - 200mm Ø PVC SDR 35 SAN @ 1.89%	17.98m - 825mm Ø CONC. 65-D STM @ 0.11%	1+025	CONNECT TO LOWERED WATERMAIN
96.31	96.99	94.47	SE=93.05 NE=93.11 SW=93.60	NW=94.10 SE=94.10	1+035	CONNECT TO EXISTING 300mm WATERMAIN
96.37	96.97	94.62	37.21m - 200mm Ø PVC SDR 35 SAN @ 1.10%	37.35m - 825mm Ø CONC. 65-D STM @ 0.11%	1+045	CONNECT TO EXISTING 300mm WATERMAIN
96.47	96.85	94.57	SE=93.46 NE=93.46 SW=93.52	NW=94.14 SE=94.14	1+055	CONNECT TO EXISTING 300mm WATERMAIN
96.55	96.93	94.54	43.49m - 200mm Ø PVC DR 35 SAN @ 0.32%	43.50m - 750mm Ø CONC. 65-D STM @ 0.11%	1+065	CONNECT TO EXISTING 300mm WATERMAIN
96.44	96.88	94.70	SE=93.60 NE=93.66 SW=93.66	NW=94.26 SE=94.26	1+075	CONNECT TO EXISTING 300mm WATERMAIN
96.49	96.86	94.70	39.41m - 200mm Ø PVC DR 35 SAN @ 0.33%	39.40m - 675mm Ø CONC. 65-D STM @ 0.15%	1+085	CONNECT TO EXISTING 300mm WATERMAIN
96.57	96.82	94.70	SE=93.73 NE=93.73 SW=93.79	NW=94.26 SE=94.26	1+095	CONNECT TO EXISTING 300mm WATERMAIN
96.59	96.80	94.81	40.21m - 200mm Ø PVC DR 35 SAN @ 0.32%	41.39m - 600mm Ø CONC. 65-D STM @ 0.17%	1+105	CONNECT TO EXISTING 300mm WATERMAIN
96.63	96.78	94.88	SE=93.86 NE=93.92 SW=93.92	NW=94.33 SE=94.33	1+115	CONNECT TO EXISTING 300mm WATERMAIN
96.66	96.74	94.91	42.71m - 200mm Ø PVC DR 35 SAN @ 0.33%	41.52m - 525mm Ø CONC. 65-D STM @ 0.22%	1+125	CONNECT TO EXISTING 300mm WATERMAIN
96.67	96.72	94.95	SE=94.00 NE=94.06 SW=94.06	NW=94.33 SE=94.33	1+135	CONNECT TO EXISTING 300mm WATERMAIN
96.69	96.70	95.00	44.19m - 200mm Ø PVC DR 35 SAN @ 0.34%	81.90m - 450mm Ø PVC SDR 35 STM @ 0.21%	1+145	CONNECT TO EXISTING 300mm WATERMAIN
96.67	96.67	95.14	SE=94.15 NE=94.21 SW=94.21	NW=94.33 SE=94.33	1+155	CONNECT TO EXISTING 300mm WATERMAIN
96.60	96.64	95.14	37.71m - 200mm Ø PVC DR 35 SAN @ 0.35%	47.99m - 375mm Ø PVC DR 35 STM @ 0.25%	1+165	CONNECT TO EXISTING 300mm WATERMAIN
96.63	96.63	95.15	SE=94.28 NE=94.34 SW=94.34	NW=94.33 SE=94.33	1+175	CONNECT TO EXISTING 300mm WATERMAIN
96.64	96.64	95.15	50.99m - 200mm Ø PVC DR 35 SAN @ 0.33%	47.99m - 375mm Ø PVC DR 35 STM @ 0.25%	1+185	CONNECT TO EXISTING 300mm WATERMAIN
96.60	96.60	95.15	SE=94.34 NE=94.40 SW=94.40	NW=94.33 SE=94.33	1+195	CONNECT TO EXISTING 300mm WATERMAIN
96.63	96.63	95.18	SE=94.45 NE=94.51 SW=94.51	NW=94.33 SE=94.33	1+205	CONNECT TO EXISTING 300mm WATERMAIN
96.64	96.64	95.22	SE=94.51 NE=94.57 SW=94.57	NW=94.33 SE=94.33	1+215	CONNECT TO EXISTING 300mm WATERMAIN
96.60	96.60	95.21	SE=94.57 NE=94.63 SW=94.63	NW=94.33 SE=94.33	1+225	CONNECT TO EXISTING 300mm WATERMAIN
96.60	96.60	95.20	SE=94.63 NE=94.69 SW=94.69	NW=94.33 SE=94.33	1+235	CONNECT TO EXISTING 300mm WATERMAIN
96.60	96.60	95.19	SE=94.69 NE=94.75 SW=94.75	NW=94.33 SE=94.33	1+245	CONNECT TO EXISTING 300mm WATERMAIN
96.60	96.60	95.18	SE=94.75 NE=94.81 SW=94.81	NW=94.33 SE=94.33	1+255	CONNECT TO EXISTING 300mm WATERMAIN
96.60	96.60	95.18	SE=94.81 NE=94.87 SW=94.87	NW=94.33 SE=94.33	1+265	CONNECT TO EXISTING 300mm WATERMAIN
96.60	96.60	95.18	SE=94.87 NE=94.93 SW=94.93	NW=94.33 SE=94.33	1+275	CONNECT TO EXISTING 300mm WATERMAIN
96.60	96.60	95.18	SE=94.93 NE=94.99 SW=94.99	NW=94.33 SE=94.33	1+285	CONNECT TO EXISTING 300mm WATERMAIN
96.60	96.60	95.18	SE=94.99 NE=95.05 SW=95.05	NW=94.33 SE=94.33	1+295	CONNECT TO EXISTING 300mm WATERMAIN
96.60	96.60	95.18	SE=95.05 NE=95.11 SW=95.11	NW=94.33 SE=94.33	1+305	CONNECT TO EXISTING 300mm WATERMAIN
96.60	96.60	95.18	SE=95.11 NE=95.17 SW=95.17	NW=94.33 SE=94.33	1+315	CONNECT TO EXISTING 300mm WATERMAIN
96.60	96.60	95.18	SE=95.17 NE=95.23 SW=95.23	NW=94.33 SE=94.33	1+325	CONNECT TO EXISTING 300mm WATERMAIN
96.60	96.60	95.18	SE=95.23 NE=95.29 SW=95.29	NW=94.33 SE=94.33	1+335	CONNECT TO EXISTING 300mm WATERMAIN
96.60	96.60	95.18	SE=95.29 NE=95.35 SW=95.35	NW=94.33 SE=94.33	1+345	CONNECT TO EXISTING 300mm WATERMAIN
96.60	96.60	95.18	SE=95.35 NE=95.41 SW=95.41	NW=94.33 SE=94.33	1+355	CONNECT TO EXISTING 300mm WATERMAIN
96.60	96.60	95.18	SE=95.41 NE=95.47 SW=95.47	NW=94.33 SE=94.33	1+365	CONNECT TO EXISTING 300mm WATERMAIN
96.60	96.60	95.18	SE=95.47 NE=95.53 SW=95.53	NW=94.33 SE=94.33	1+375	CONNECT TO EXISTING 300mm WATERMAIN

NOTE: THE POSITION OF ALL POLE LINES, CONDUITS, WATERMANS, SEWERS AND OTHER UNDERGROUND AND OVERGROUND UTILITIES AND STRUCTURES IS NOT NECESSARILY SHOWN ON THE CONTRACT DRAWINGS, AND WHERE SHOWN, THE ACCURACY OF THE POSITION OF SUCH UTILITIES AND STRUCTURES IS NOT GUARANTEED. BEFORE STARTING WORK, DETERMINE THE EXACT LOCATION OF ALL SUCH UTILITIES AND STRUCTURES AND ASSUME ALL LIABILITY FOR DAMAGE TO THEM.



DESIGN: DBB
CHECKED: MSP
DRAWN: MTM
CHECKED: DBB
APPROVED: MSP

LICENSED PROFESSIONAL ENGINEER
D. D. BLAIR
10012737
Feb 17 2022
PROVINCE OF ONTARIO

NOVATECH
Engineers, Planners & Landscape Architects
Suite 200, 240 Michael Cowpland Drive
Ottawa, Ontario, Canada K2M 1P6
Telephone: (613) 254-9643
Facsimile: (613) 254-5867
Website: www.novatech-eng.com

CITY OF OTTAWA
5331 FERNBANK ROAD
FERNBANK ZENS

DRAWING NAME: PLAN AND PROFILE

PROJECT No.: 121011-00
REV: 2
DRAWING No.: 121011-PR
#18539