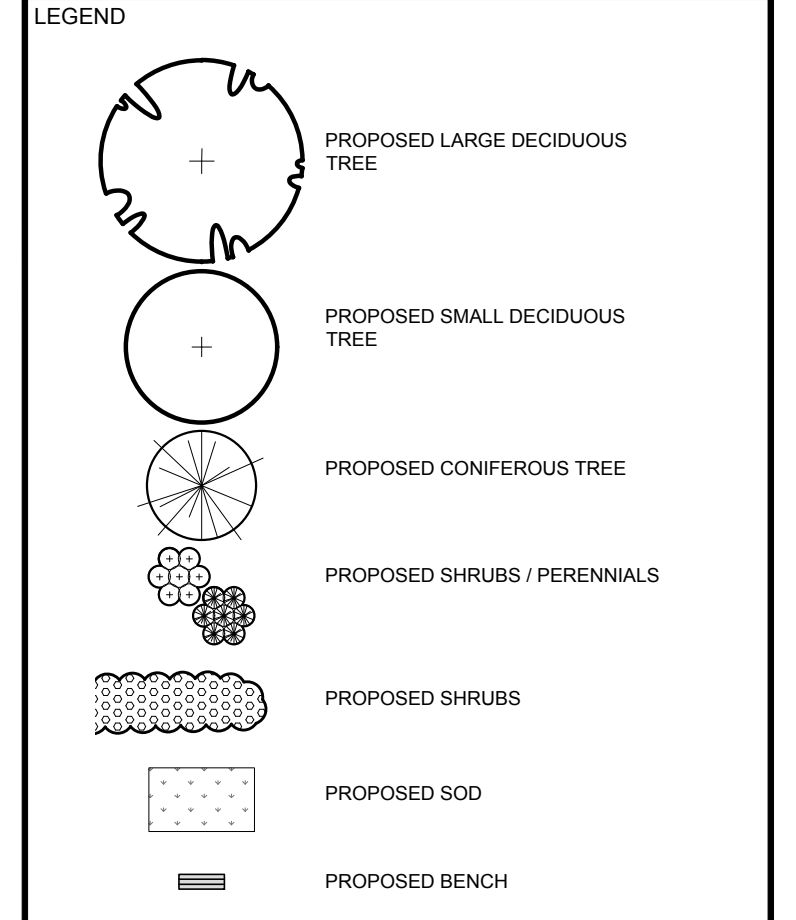


**CLIENT**  
**CLARIDGE HOMES**

**CONSULTANTS**  
**ARCHITECTS:** RLA ARCHITECTURE, RODERICK LAHEY ARCHITECT INC., 90 BUCHANAN STREET, OTTAWA, ONTARIO K1S 3J8, TEL: (613) 724-9622  
**CIVIL ENGINEERS:** NOVATECH ENGINEERS, PLANNERS & LANDSCAPE ARCHITECTS, SUITE 202, 243 REMOND CORNWALL DRIVE, OTTAWA, ONTARIO K2M 1P6, TEL: (613) 224-9643



**APPROVED**  
 By Allison Hamlin at 12:49 pm, Jun 02, 2022

*Allison Hamlin*  
**ALLISON HAMLIN**  
 MANAGER (A), DEVELOPMENT REVIEW WEST  
 PLANNING, REAL ESTATE & ECONOMIC DEVELOPMENT  
 DEPARTMENT, CITY OF OTTAWA

No.	Issue	Date	DR	CK
5	REVISED AS PER CITY COMMENTS	04/08/2022	LC	JL
4	REVISED AS PER CITY COMMENTS	02/16/2022	LC	JL
3	REVISED AS PER CIVIL/SITE PLAN CHANGES	11/04/2021	LC	JL
2	REVISED AS PER CITY COMMENTS	10/07/2021	LC	JL
1	ISSUED FOR COMMENTS AND REVIEW	06/18/2021	LC	JL

**JAMES B. LENNOX & ASSOCIATES INC.**  
**LANDSCAPE ARCHITECTS**  
 3332 CARLING AVE., OTTAWA, ONTARIO K2H 5A5  
 TEL: (613) 722-5168 FAX: (1866) 343-3942

**PROJECT**  
 TERRY FOX ZENS  
 OTTAWA, ONTARIO

**DRAWING**  
 LANDSCAPE PLAN  
 (NORTH-WEST)

**STAMP**

**SCALE**  
 AS SHOWN

**START DATE**  
 JUNE, 2021

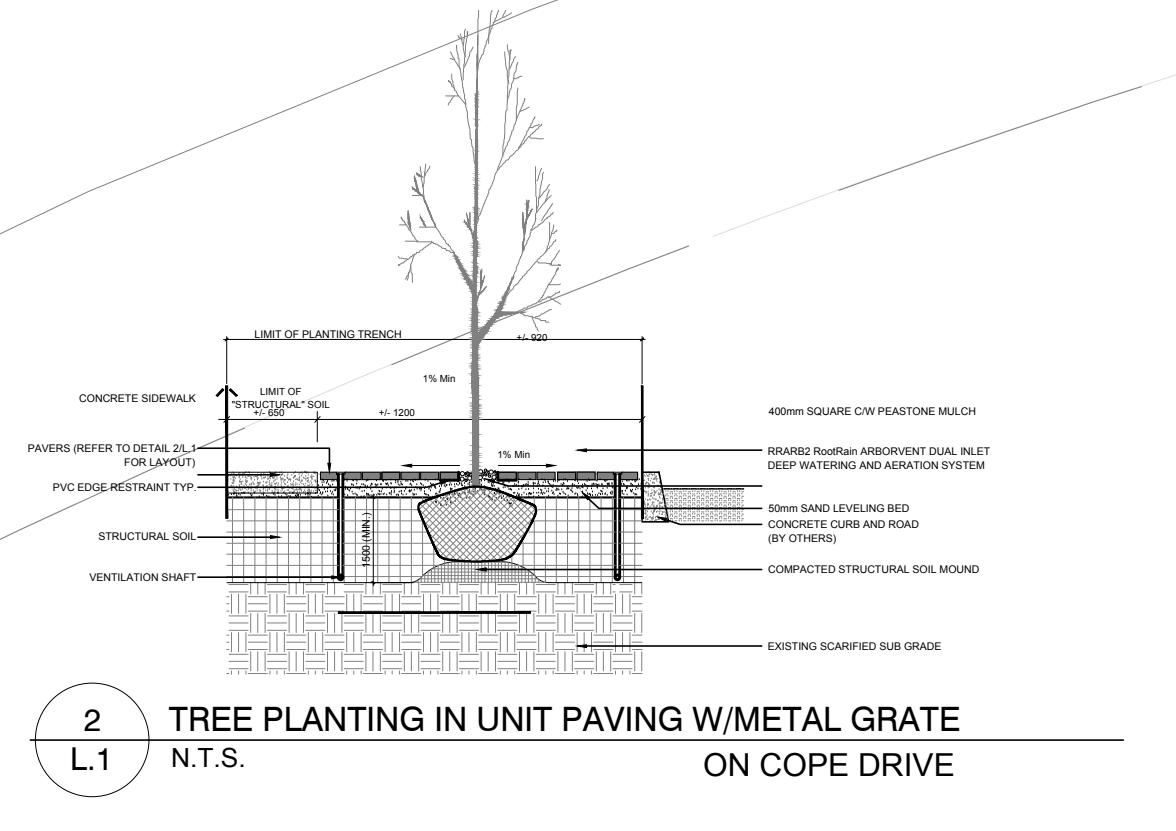
**PROJECT NO.**  
 21-CLG-2163

**PROJECT NORTH**

**DRAWING NO.**  
**L.1**

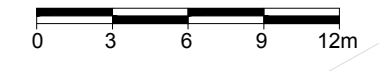
PLOT SIZE ARCH-D

- GENERAL NOTES:**
- It is the responsibility of the appropriate contractor or official to report any errors, omissions or discrepancies on this plan with actual site conditions to the Landscape Architect before proceeding with construction.
  - The contractor is to notify all utility companies and authorities prior to any excavation and ascertain locations of underground services.
  - The contractor is to reinstate all areas and items damaged as a result of construction activity.
  - The contractor is to comply with all pertinent codes and by-laws.
  - The contractor is to maintain a positive surface run-off throughout the entire construction period.
  - The Landscape Architect is not responsible for subsurface conditions.
  - The contractor is to identify all existing trees to remain on site with the Landscape Architect prior to construction.
  - The contractor is to stake the proposed location of all plant material in conjunction with the Landscape Architect prior to excavation.
  - Minimum distances for selected deciduous trees are as follows:
    - Building Foundations 7.5m
    - Sidewalks 1.5m
    - Public Streets 2.5m
    - Underground Infrastructure 2.0m
  - All trees within 1m of underground utility trenches are to be excavated by hand.
  - Remove all protective wrapping from tree trunks after installation.
  - Staking of trees shall only be performed if necessary.
  - Ensure that mulch is pulled back a min. distance of 75mm from base of tree trunk.
  - Large tree setbacks equivalent to mature height.



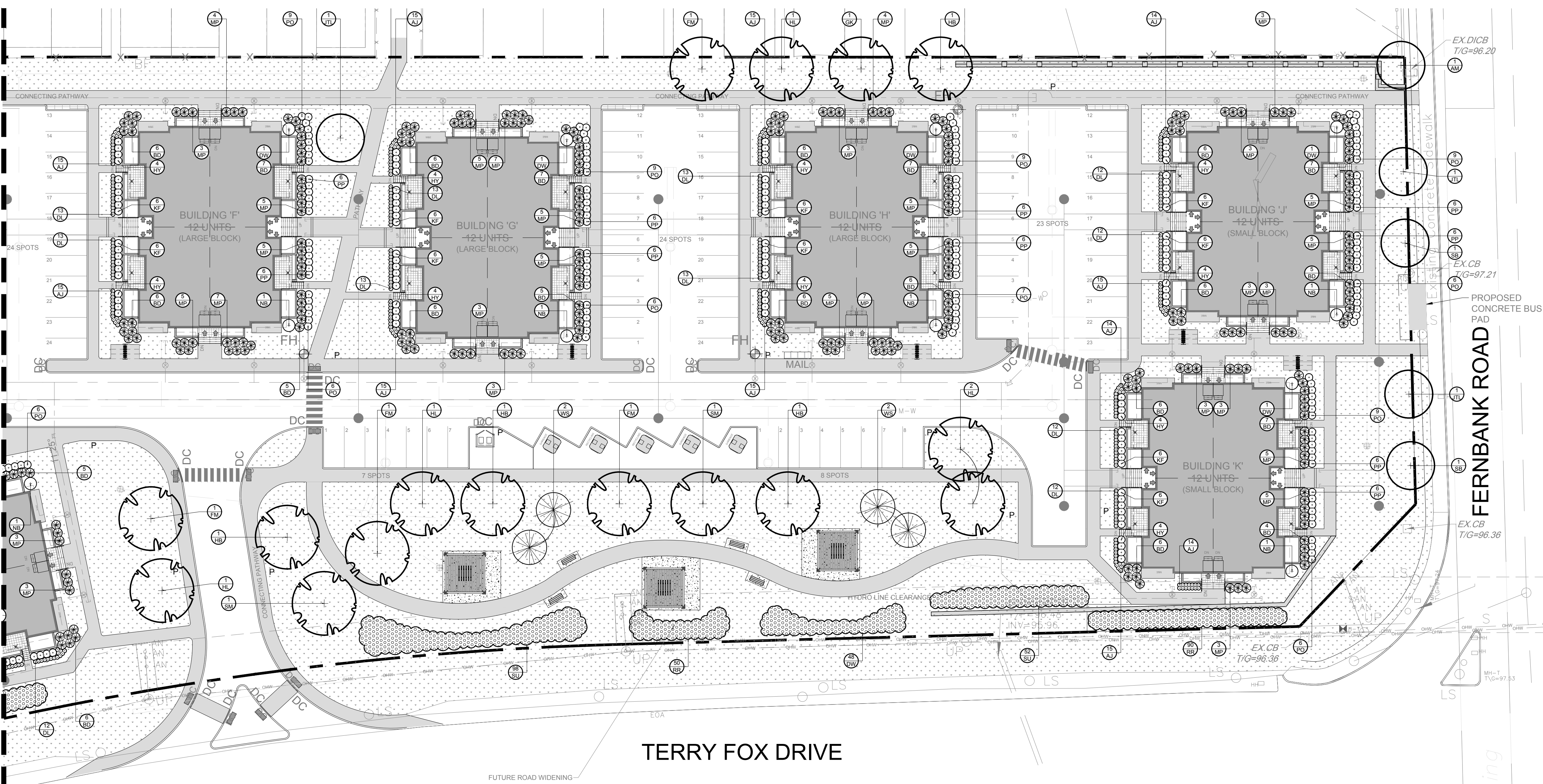
**1**  
**L.1**

**LANDSCAPE PLAN**  
 SCALE 1:300



CONTINUED ON DRAWING L.2

CONTINUED ON DRAWING L.1



1 LANDSCAPE PLAN  
SCALE 1:300

- GENERAL NOTES:**
- It is the responsibility of the appropriate contractor or official to report any errors, omissions or discrepancies on this plan with actual site conditions to the Landscape Architect before proceeding with construction.
  - The contractor is to notify all utility companies and authorities prior to any excavation and ascertain locations of underground services.
  - The contractor is to reinstate all areas and items damaged as a result of construction activity.
  - The contractor is to comply with all pertinent codes and by-laws.
  - The contractor is to maintain a positive surface run-off throughout the entire construction period.
  - The Landscape Architect is not responsible for subsurface conditions.
  - The contractor is to identify all existing trees to remain on site with the Landscape Architect prior to construction.
  - The contractor is to stake the proposed location of all plant material in conjunction with the Landscape Architect prior to excavation.
  - Minimum distances for selected deciduous trees are as follows:
    - Building Foundations 7.5m
    - Sidewalks 1.5m
    - Public Streets 2.5m
    - Underground Infrastructure 2.0m
  - All trees within 1m of underground utility trenches are to be excavated by hand.
  - Remove all protective wrapping from tree trunks after installation.
  - Staking of trees shall only be performed if necessary.
  - Ensure that mulch is pulled back a min. distance of 75mm from base of tree trunk.

**CLIENT**

**CLARIDGE HOMES**

**CONSULTANTS**

**ARCHITECTS:**  
RLA ARCHITECTURE  
RODERICK LAHEY ARCHITECT INC.  
50 BEICH STREET OTTAWA, ONTARIO K1S 3A5  
TEL: (613) 724-9632

**CIVIL ENGINEERS:**  
NOVATECH  
ENGINEERS, PLANNERS & LANDSCAPE ARCHITECTS  
1000 WILSON AVENUE, SUITE 200  
OTTAWA, ONTARIO K2M 1P6  
TEL: (613) 254-9843

**LEGEND**

- PROPOSED LARGE DECIDUOUS TREE
- PROPOSED SMALL DECIDUOUS TREE
- PROPOSED CONIFEROUS TREE
- PROPOSED SHRUBS / PERENNIALS
- PROPOSED SHRUBS
- PROPOSED SOD
- PROPOSED BENCH
- PROPOSED RETAINING WALL REFER TO GRADING PLAN
- PROPOSED SHADE STRUCTURE WITH TABLE AND BENCHES UNDERNEATH

5	REVISED AS PER CITY COMMENTS	04/08/2022	LC	JL
4	REVISED AS PER CITY COMMENTS	02/16/2022	LC	JL
3	REVISED AS PER CIVIL/SITE PLAN CHANGES	11/04/2021	LC	JL
2	REVISED AS PER CITY COMMENTS	10/07/2021	LC	JL
1	ISSUED FOR COMMENTS AND REVIEW	06/18/2021	LC	JL
No.	Issue	Date	DR	CK

**JAMES B. LENNOX & ASSOCIATES INC.**  
**LANDSCAPE ARCHITECTS**  
3332 CARLING AVE. OTTAWA, ONTARIO K2M 5A5  
TEL: (613) 722-5168 FAX: (613) 722-5162

**PROJECT**

**TERRY FOX ZENS**  
OTTAWA, ONTARIO

**DRAWING**

**LANDSCAPE PLAN (SOUTH-EAST)**

**STAMP**

ASSOCIATION OF LANDSCAPE ARCHITECTS  
MEMBER

**SCALE**

AS SHOWN

**START DATE**

JUNE, 2021

**PROJECT NO.**

21-CLG-2163

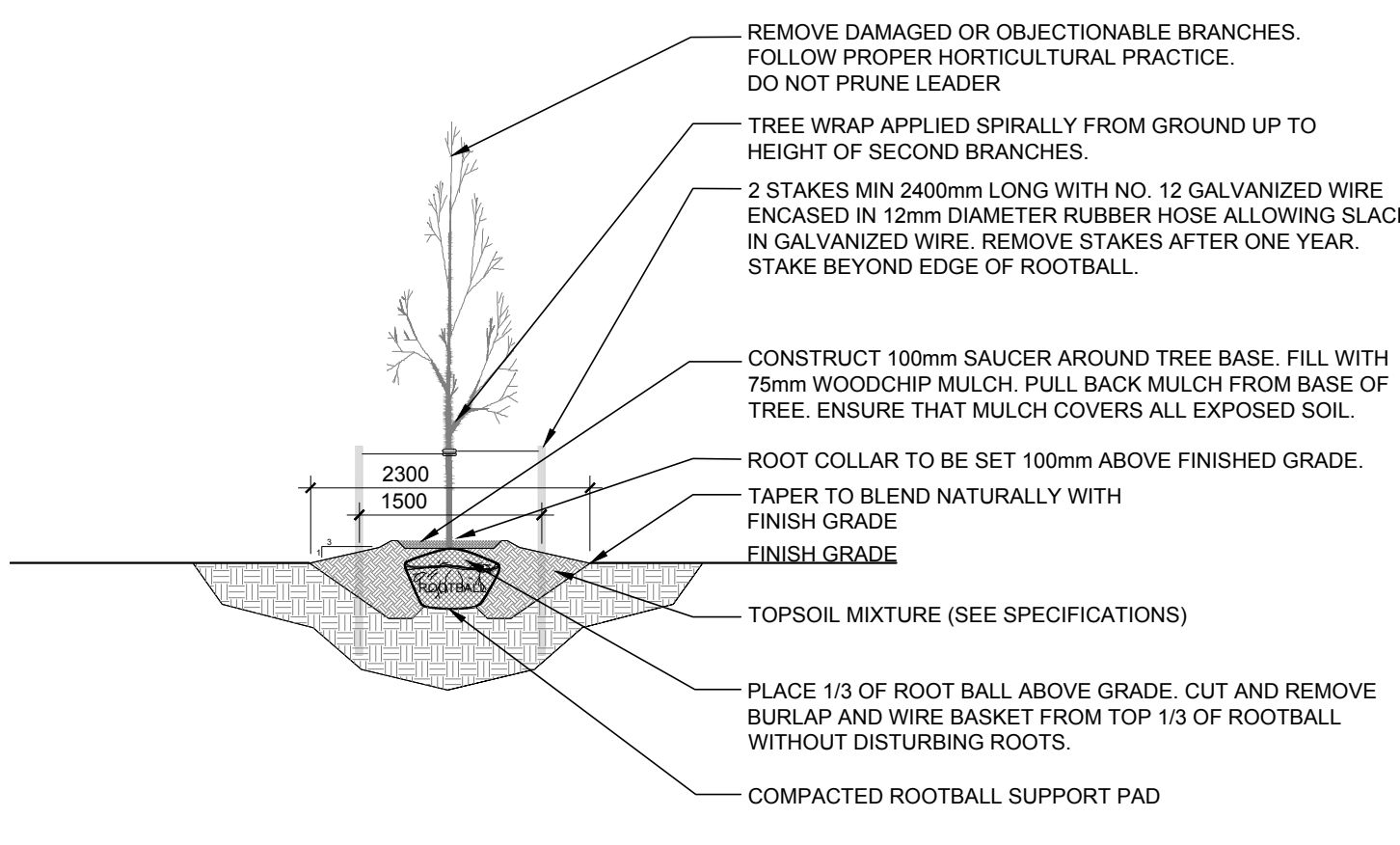
**PROJECT NORTH**

**DRAWING NO.**

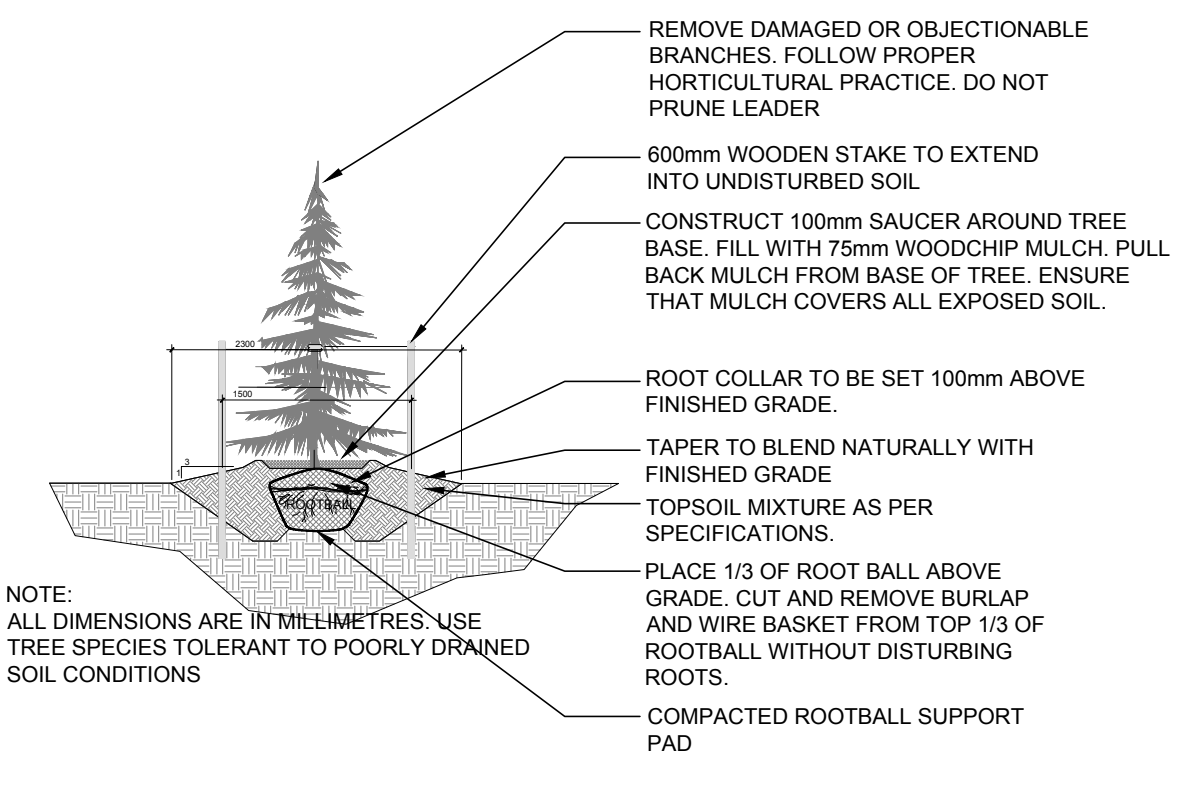
**L.2**

PLOT SIZE ARCH-D

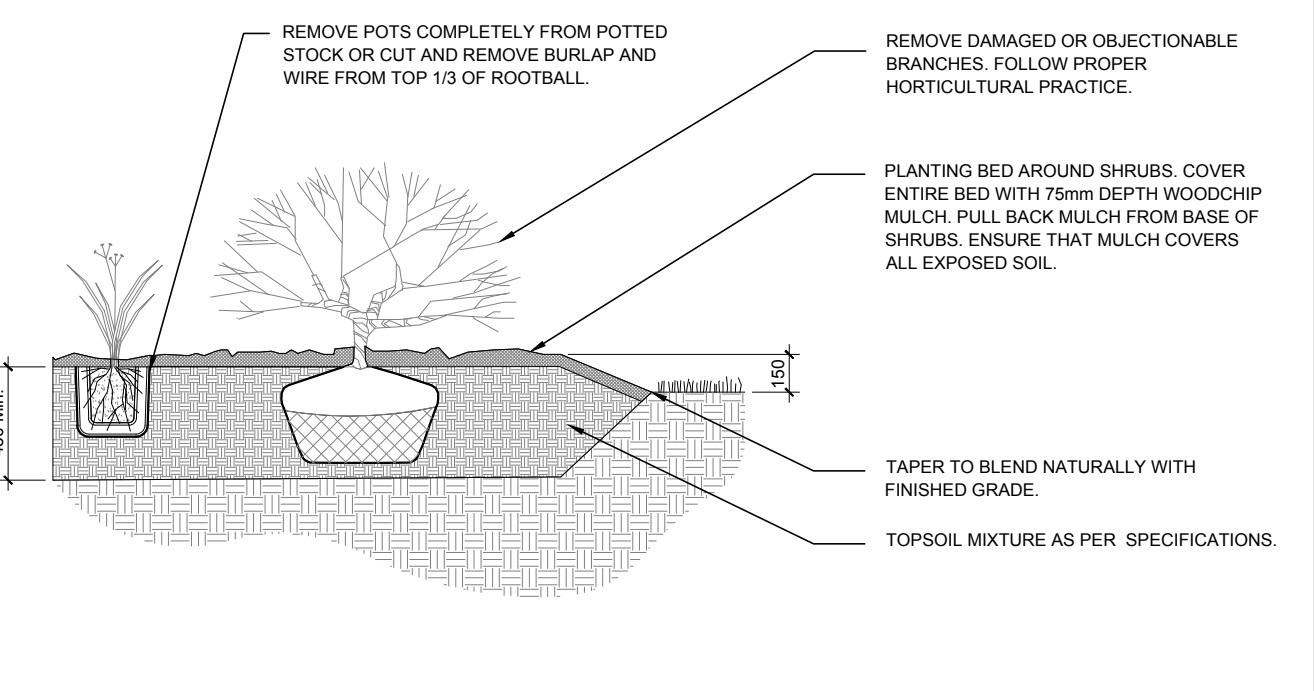
- NOTES:**
- ALL DIMENSIONS ARE IN MILLIMETRES.
  - USE TREE SPECIES TOLERANT TO POORLY DRAINED SOIL CONDITIONS.



2 DECIDUOUS TREE PLANTING  
N.T.S.



3 CONIFEROUS TREE PLANTING  
N.T.S.



4 SHRUB AND PERENNIAL PLANTING  
N.T.S.

**PROPOSED PLANT LIST**

KEY	qty.	BOTANICAL NAME	COMMON NAME	SIZE	CONDITION	REMARKS
<b>TREES</b>						
AM	8	Acer ginnala	Amur Maple	60mm ø	B&B	
FM	7	Acer x freemanii	Friesman's Maple	60mm ø	B&B	
GK	5	Ginkgo biloba	Maidenhair Tree	60mm ø	B&B	
HB	9	Celtis occidentalis	Hackberry	60mm ø	B&B	
HL	9	Gleditsia triacanthos var. inermis 'Shademaster'	Shademaster Honeylocust	60mm ø	B&B	
JTL	12	Syringa reticulata	Japanese Tree Lilac	60mm ø	B&B	
MC	5	Malus 'Makami'	Makami Crabapple	60mm ø	B&B	
SB	6	Amelanchier canadensis	Shadblow Serviceberry	60mm ø	B&B	
SM	4	Acer saccharum	Sugar Maple	60mm ø	B&B	
WS	17	Picea glauca	White Spruce	1800 mm ht.	B&B	
<b>SHRUBS</b>						
BD	373	Juniperus sabinia 'Blue Danube'	Blue Danube Juniper	600mm spr.	Potted	1000mm o.c.
DW	236	Cornus sericea	Red Osier Dogwood	800mm ht.	Potted	1200mm o.c.
HY	120	Hydrangea arborescens 'Annabelle'	Annabelle Hydrangea	3 gal. pot	Potted	800 mm o.c.
MP	401	Pinus mugo 'Pumilio'	Dwarf Mugo Pine	600mm spr.	Potted	1000mm o.c.
NB	16	Physocarpus opulifolius	Common Ninebark	600mm ht.	Potted	
PD	225	Potentilla fruticosa 'Goldfinger'	Goldfinger Potentilla	600mm ht.	Potted	800mm o.c.
PP	192	Spiraea japonica 'Little Princess'	Little Princess Spirea	600mm pot	Potted	800 mm o.c.
RR	311	Rosa rugosa	Rugosa Rose	800mm ht.	Potted	800mm o.c.
SU	330	Rhus typhina 'Laciniata'	Cuteleaf Staghorn Sumac	800 mm ht.	Potted	1200 mm o.c.
<b>ORNAMENTAL GRASS AND PERENNIALS</b>						
AJ	522	Sedum telephium 'Autumn Joy'	Autumn Joy Sedum	150mm pot	Potted	400 mm o.c.
DL	412	Hemerocallis 'Stella D'Oro'	Stella D'Oro Day Lily	150mm pot	Potted	400 mm o.c.
KF	192	Calamagrostis 'Karl Foerster'	Karl Foerster Grass	250mm pot	Potted	800 mm o.c.

D07-12-21-0080