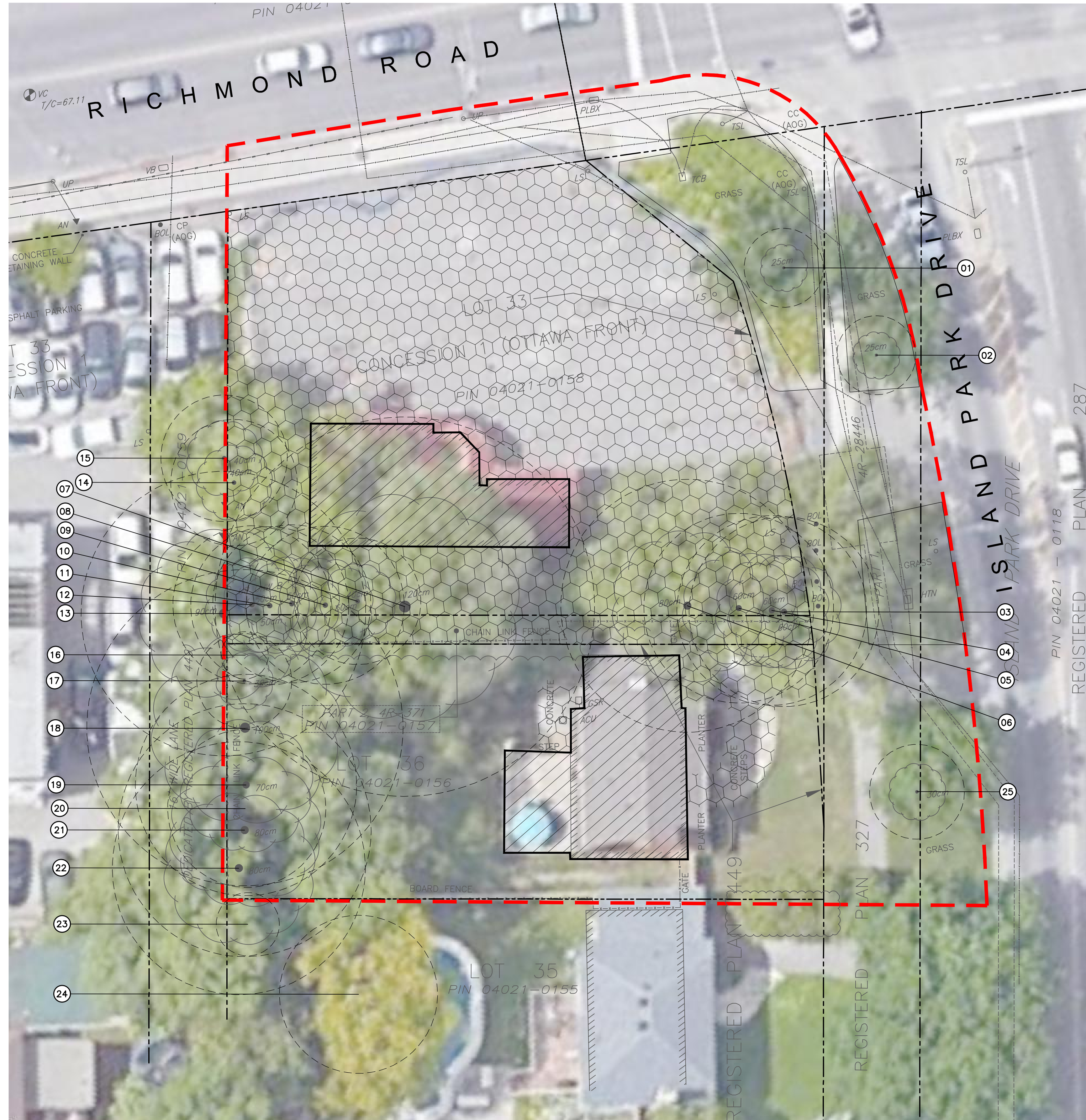
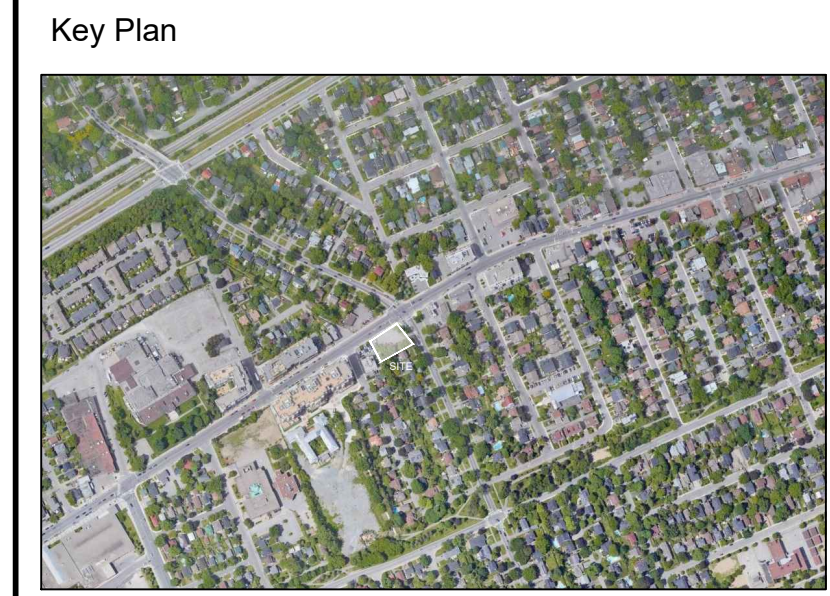


SITE DESCRIPTION AS FOLLOWS:

- THE EXISTING SITE IS COMPRISED OF TWO PROPERTIES: 70 RICHMOND ROAD AND 376 ISLAND PARK DRIVE. 70 RICHMOND ROAD IS CURRENTLY USED FOR INVENTORY DISPLAY AND STORAGE RELATED TO THE ADJACENT CAR DEALERSHIP. 376 ISLAND PARK DRIVE IS A RESIDENTIAL PROPERTY WITH AN EXISTING TWO-STORY HOUSE. AN UNUSED, HISTORICALLY SIGNIFICANT, ONE STOREY BUILDING IS SITUATED AT THE SOUTHERN END OF THE 70 RICHMOND ROAD PROPERTY, AWAY FROM THE STREET. THE PROPERTIES ARE BOTH RELATIVELY FLAT.
  - THE SITE IS APPROXIMATELY 1735m<sup>2</sup> (0.1735HA).
  - APPROXIMATELY 935m<sup>2</sup> IS OCCUPIED BY HARD SURFACES.
  - APPROXIMATELY 220m<sup>2</sup> IS OCCUPIED BY BUILDING FOOTPRINTS.
- GENERALLY, THE TREES ON THE PROPERTY ARE IN MODERATE TO POOR CONDITION WITH NEARLY ALL SPECIES BEING INVASIVE.
  - 25 TREES WERE INVENTORIED WITHIN OR IN PROXIMITY TO THE PROJECT.
  - 18 TREES ARE WITHIN THE PROJECT PROPERTY LIMITS, 2 TREES ARE SHARED WITH THE CITY, 2 TREES ARE ON AN ADJACENT PROPERTY AND 3 TREES ARE IN THE ISLAND PARK DRIVE RIGHT-OF-WAY.
- THE TWO TREES IN THE ISLAND PARK DRIVE RIGHT-OF-WAY WILL BE SIGNIFICANTLY IMPACTED WITH CONSTRUCTION UP TO THE PROPERTY LIMIT.
  - THE TREES ARE OF MODERATE SIZE WITH SOME POSITIVE IMPACTS TO THE USERS ALONG ISLAND PARK DRIVE.
  - BOTH TREES HAVE MINOR AFFLICTIONS THAT WILL PRESENT AS MORE SERIOUS STRUCTURAL PROBLEMS AS THE TREES CONTINUE TO MATURE.



Tree #	Botanical Name	Common Name	DBH (cm)	Ownership	Condition	High Quality Tree	Rare Tree	Comments	Arborist Recommendation	Removal Reason
1	Ulmus americana 'cultivar'	Elm cultivar	25	NCC	Good	No	No	Symmetrical canopy, Poor branch angle, Single stem, Co-dominant leaders: 2 at ~2m above grade, Large scar on upper limb, Absent central leader, Significant split of main trunk	Remain	
2	Ulmus americana 'cultivar'	Elm cultivar	25	NCC	Good	No	No	Asymmetrical canopy, Die-back <5% at canopy, Single stem	Remain	
3	Ulmus pumila	Siberian Elm	60	Private	Moderate	No	No	Symmetrical canopy, Die-back ~15%, Poor branch angle, Single stem, Co-dominant leaders: 3 at ~2m above grade, Bark rot at limbs	Remove	Construction conflict
4	Ulmus pumila	Siberian Elm	60	Private	Moderate	No	No	Asymmetrical canopy, Die-back ~10%, Single stem, Bark rot at limbs	Remove	Construction conflict
5	Ulmus pumila	Siberian Elm	60	Private	Moderate	No	No	Asymmetrical canopy, Die-back ~10%, Single stem, Bark rot at limbs	Remove	Construction conflict
6	Ulmus pumila	Siberian Elm	80	Private	Moderate	No	No	Asymmetrical canopy, Die-back ~20%, Poor branch angle, Single stem, Co-dominant leaders: 2 at ~4m above grade, Heart rot at trunk, girdled around adjacent tree	Remove	Construction conflict
7	Ulmus pumila	Siberian Elm	120	Private	Moderate	No	No	Asymmetrical canopy, Die-back ~10% at canopy, Multi stem: 2, Bark rot at limbs, girdled around adjacent tree, girdled around adjacent tree	Remove	Construction conflict
8	Ulmus pumila	Siberian Elm	40	Private	Poor	No	No	Asymmetrical canopy, Die-back ~40% at canopy, Broken limbs, Single stem, Co-dominant leaders: 2 at ~4m above grade, Bark rot at limbs	Remove	Construction conflict
9	Ulmus pumila	Siberian Elm	50	Private	Moderate	No	No	Asymmetrical canopy, Die-back ~10%, Broken limbs, Single stem, Co-dominant leaders: 2 at ~6m above grade, Bark rot at limbs	Remove	Construction conflict
10	Ulmus Americana & Acer Saccharum	American Elm & Sugar Maple	50	Private	Moderate	No	No	Asymmetrical canopy, Die-back ~5-10%, Poor branch angle, Single stem, Bark rot at trunk & limbs, Maple has large scar at trunk flare	Remove	Construction conflict
11	Ulmus pumila	Siberian Elm	50	Private	Moderate	No	No	Asymmetrical canopy, Die-back ~20%, single stem, Bark rot at limbs	Remove	Construction conflict
12	Ulmus pumila	Siberian Elm	50	Private	Poor	No	No	Asymmetrical canopy, Die-back ~30% at canopy, Poor branch angle, Single stem, Co-dominant leaders: 2 at ~4m above grade, Bark rot at trunk & limbs, Hazard tree	Remove	Construction conflict
13	Ulmus pumila	Siberian Elm	90	City/Private	Poor	No	No	Asymmetrical canopy, Die-back ~20% at canopy, Single stem, Heart rot at trunk, Bark rot at limbs, Leaning, Hazard tree, Cavity & rot at trunk flare	Remove	Construction conflict
14	Ulmus pumila	Siberian Elm	40	Private	Moderate	No	No	Asymmetrical canopy, Die-back ~30%, Single stem, Bark rot at limbs	Remove	Construction conflict
15	Acer negundo	Manitoba Maple	40	City/Private	Moderate	No	No	Asymmetrical canopy, Broken limbs, Single stem, Co-dominant leaders: 2 at ~2m above grade, Leaning	Remove	Construction conflict
16	Acer platanoides	Norway Maple	15	Private	Moderate	No	No	Asymmetrical canopy, Die back ~20% @ canopy, Poor branch angle, Single stem	Remove	Construction conflict
17	Ulmus pumila	Siberian Elm	30	Private	Poor	No	No	Symmetrical canopy, Die back ~50% @ canopy, Broken limbs, Pruned limbs @ OH Utilities, Single stem, Leaning	Remove	Construction conflict
18	Ulmus pumila	Siberian Elm	100	Private	Moderate	No	No	Asymmetrical canopy, Die back ~15% @ canopy, Broken limbs, Pruned limbs @ OH Utilities, Single stem, Co-dominant leaders: 2 @ ~2m above grade, Bark rot @ trunk	Remove	Construction conflict
19	Ulmus pumila	Siberian Elm	70	Private	Moderate	No	No	Asymmetrical canopy, Broken limbs, Pruned limbs @ OH Utilities, Single stem	Remove	Construction conflict
20	Ulmus pumila	Siberian Elm	50	Private	Moderate	No	No	Asymmetrical canopy, Pruned limbs @ OH Utilities, Single stem, Leaning	Remove	Construction conflict
21	Ulmus pumila	Siberian Elm	80	Private	Moderate	No	No	Asymmetrical canopy, Pruned limbs @ OH Utilities, Single stem, Leaning, Dead leader	Remove	Construction conflict
22	Ulmus pumila	Siberian Elm	80	Private	Poor	No	No	Asymmetrical canopy, Broken limbs, Pruned limbs @ OH Utilities, Poor branch angle, Single stem, Bark rot @ cavities, Leaning	Remove	Construction conflict
23	Aesculus hippocastanum	Horse Chestnut	~20	Private	Good	No	No	Asymmetrical canopy, Single stem. Access to private property not available - approximate caliper only	Remain	
24	Gleditsia triacanthos	Honey Locust	~50	Private	Good	No	No	Symmetrical canopy, Die back ~15% @ canopy, Single stem. Access to private property not available - approximate caliper only	Remain	
25	Ulmus pumila	Siberian Elm	30	NCC	Good	No	No	Symmetrical canopy, Die back ~5% @ branches, Single stem, Bark rot @ crotches	Remain	



**LEGEND**

- CRITICAL ROOT ZONE (CRZ)
- EXISTING BUILDING / STRUCTURE
- EXISTING HARD / IMPERMEABLE SURFACE
- LIMIT OF WORK

No.	Revision	Date
3	ISSUED FOR REZONING 02	10 AUG 2021
2	TREE CONSERVATION REPORT	24 AUG 2020
1	DRAFT PRELIMINARY DESIGN	14 AUG 2020

North:

Stamp:

**CSW** Landscape Architecture  
Urban Design  
Site Planning  
Recreation and Park Planning  
Project Management

319 McRae Avenue, Suite 502, Ottawa, Ontario, K1Z 0B9  
Tel: (613) 729-4536

- All measurements in millimeters unless specified otherwise. Do not scale drawing. All drawings to be read in conjunction with written specifications.
- Copyright reserved. This drawing is the exclusive property of CSW Landscape Architects Ltd. and shall not be used without the consent thereof.
- This Drawing may not be used for construction until signed by the landscape architect. It is the responsibility of the contractor to:
  - check and verify all dimensions on site;
  - report all errors and/or omissions to the landscape architect;
  - comply with all pertinent codes and by-laws;
  - check and verify locations of all underground services with all local utilities prior to any digging.

**Project:**  
**70 RICHMOND ROAD DEVELOPMENT**

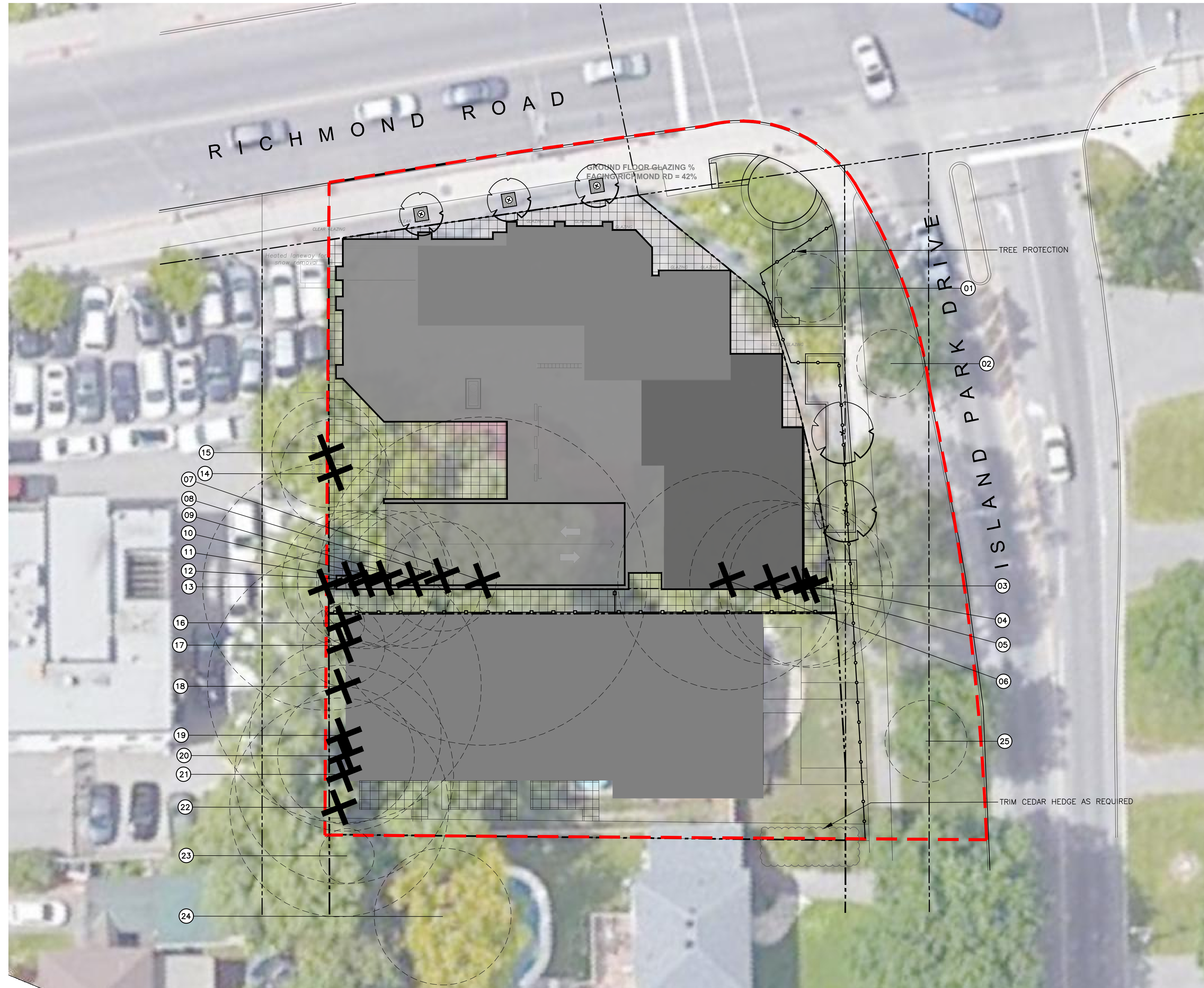
70 Richmond Rd,  
OTTAWA, ONTARIO

**Drawing:**  
**TREE INFORMATION REPORT**

Scale: 1:150	Date: 2021 08 10
Design By: JM	Drawn By: HP/PG
Project Number: 2067-01	Sheet Number: TIR 01

TREE INFORMATION REPORT:

LANDSCAPE DESIGN AND PROTECTION MEASURES SHOWN ARE SCHEMATIC AND INTENDED TO ILLUSTRATE GENERAL INTENT AND EXTENT OF HARD AND SOFT LANDSCAPE SPACES. DESIGN FEATURES, INCLUDING PROTECTION MEASURES, SHALL CONTINUE TO BE COORDINATED WITH RESPECTIVE AUTHORITIES THROUGHOUT EVOLUTION OF THE PROJECT.



Key Plan



LEGEND

- CRITICAL ROOT ZONE (CRZ)
- EXISTING TREE TO BE REMOVED
- PROPOSED DECIDUOUS TREES
- PROPOSED BUILDING / STRUCTURE
- PROPOSED HARD / IMPERMEABLE SURFACE
- LIMIT OF WORK
- TREE PROTECTION

No.	Revision	Date
3	ISSUED FOR REZONING 02	10 AUG 2021
2	TREE CONSERVATION REPORT	24 AUG 2020
1	DRAFT PRELIMINARY DESIGN	14 AUG 2020

North:

Stamp:

**CSW** Landscape Architecture  
 Urban Design  
 Site Planning  
 Recreation and Park Planning  
 Project Management

319 McRae Avenue, Suite 502, Ottawa, Ontario, K1Z 0B9  
 Tel: (613) 729-4536

- All measurements in millimeters unless specified otherwise. Do not scale drawing. All drawings to be read in conjunction with written specifications.
- Copyright reserved. This drawing is the exclusive property of CSW Landscape Architects Ltd. and shall not be used without the consent thereof.
- This Drawing may not be used for construction until signed by the landscape architect. It is the responsibility of the contractor to:
  - check and verify all dimensions on site;
  - report all errors and/or omissions to the landscape architect;
  - comply with all pertinent codes and by-laws;
  - check and verify locations of all underground services with all local utilities prior to any digging.

Project:  
**70 RICHMOND ROAD DEVELOPMENT**  
 70 Richmond Rd,  
 OTTAWA, ONTARIO

Drawing:  
**TREE INFORMATION REPORT**

Scale: 1:150	Date: 2021 08 10
Design By: JM	Drawn By: HP/PG
Project Number: 2067-01	Sheet Number: TIR 02