

TOPOGRAPHICAL PLAN OF SURVEY OF  
**PART OF LOT 11**  
**CONCESSION 3 (RIDEAU FRONT)**  
**Geographic Township of Nepean**  
**CITY OF OTTAWA**  
 Surveyed by Annis, O'Sullivan, Vollebakk Ltd.

Scale 1 : 400

Metric  
 DISTANCES SHOWN ON THIS PLAN ARE IN METRES AND  
 CAN BE CONVERTED TO FEET BY DIVIDING BY 0.3048

Surveyor's Certificate

I CERTIFY THAT:  
 1. This survey and plan are correct and in accordance with the Surveys Act and the Surveyors Act and the regulations made under them.  
 2. The survey was completed on the 19th day of January, 2022.

Date: Jan 21/22  
  
 T. Hartwick  
 Ontario Land Surveyor

Notes & Legend

| Symbol   | Denotes                            |
|----------|------------------------------------|
| □        | Survey Monument Planted            |
| ■        | Survey Monument Found              |
| SIB      | Standard Iron Bar                  |
| SSIB     | Short Standard Iron Bar            |
| IB       | Iron Bar                           |
| CC       | Cut Cross                          |
| (WIT)    | Witness                            |
| Meas.    | Measured                           |
| (AOG)    | Annis, O'Sullivan, Vollebakk Ltd.  |
| (PI)     | Plan 4R-33597                      |
| (P2)     | (AOG) Plan dated October 29, 2021. |
| — OHW —  | Overhead Wires                     |
| CSP      | Corrugated Steel Pipe              |
| CPP      | Corrugated Plastic Pipe            |
| CCP      | Concrete Pipe                      |
| CLF      | Chain Link Fence                   |
| PWF      | Post and Wire Fence                |
| BOS      | Bottom of Slope                    |
| TOS      | Top of Slope                       |
| DC       | Ditch Centerline                   |
| Inv.     | Invert                             |
| RWT      | Timber Retaining Wall              |
| o WP     | Wood Pole                          |
| o UP     | Utility Pole                       |
| o AN     | Anchor                             |
| o        | Diameter                           |
| + 65.00  | Location of Elevations             |
| + 65.00* | Top of Retaining Wall Elevation    |

Distances shown on this plan are ground distances and can be converted to grid distances by multiplying by the combined scale factor of 0.999933.

Bearings are grid, derived from Can-Net 2016 Real Time Network GPS observations referenced to Specified Control Points 01919791338 and 01919871649, MTM Zone 9 (76°30' West Longitude) NAD-83 (original).

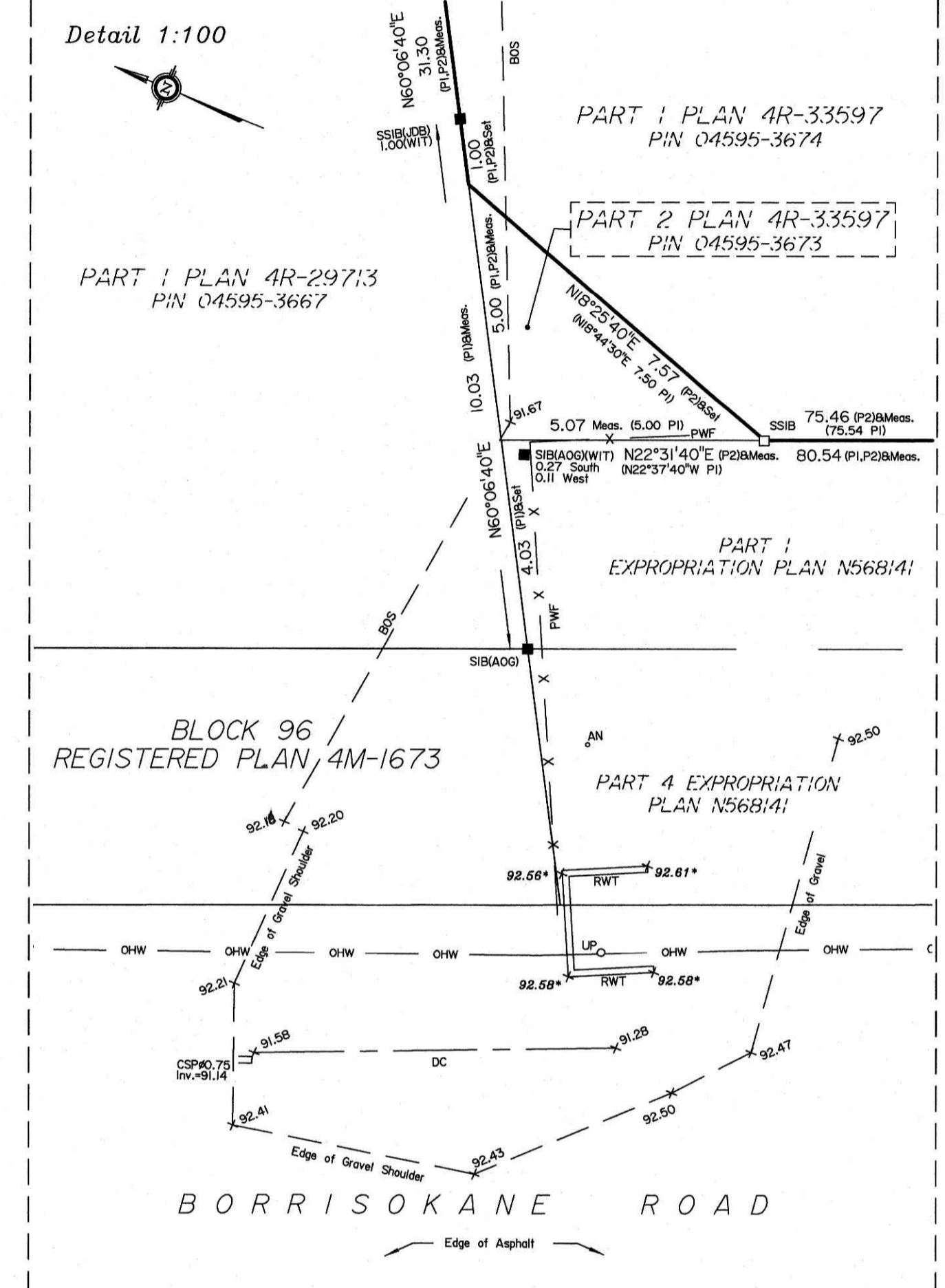
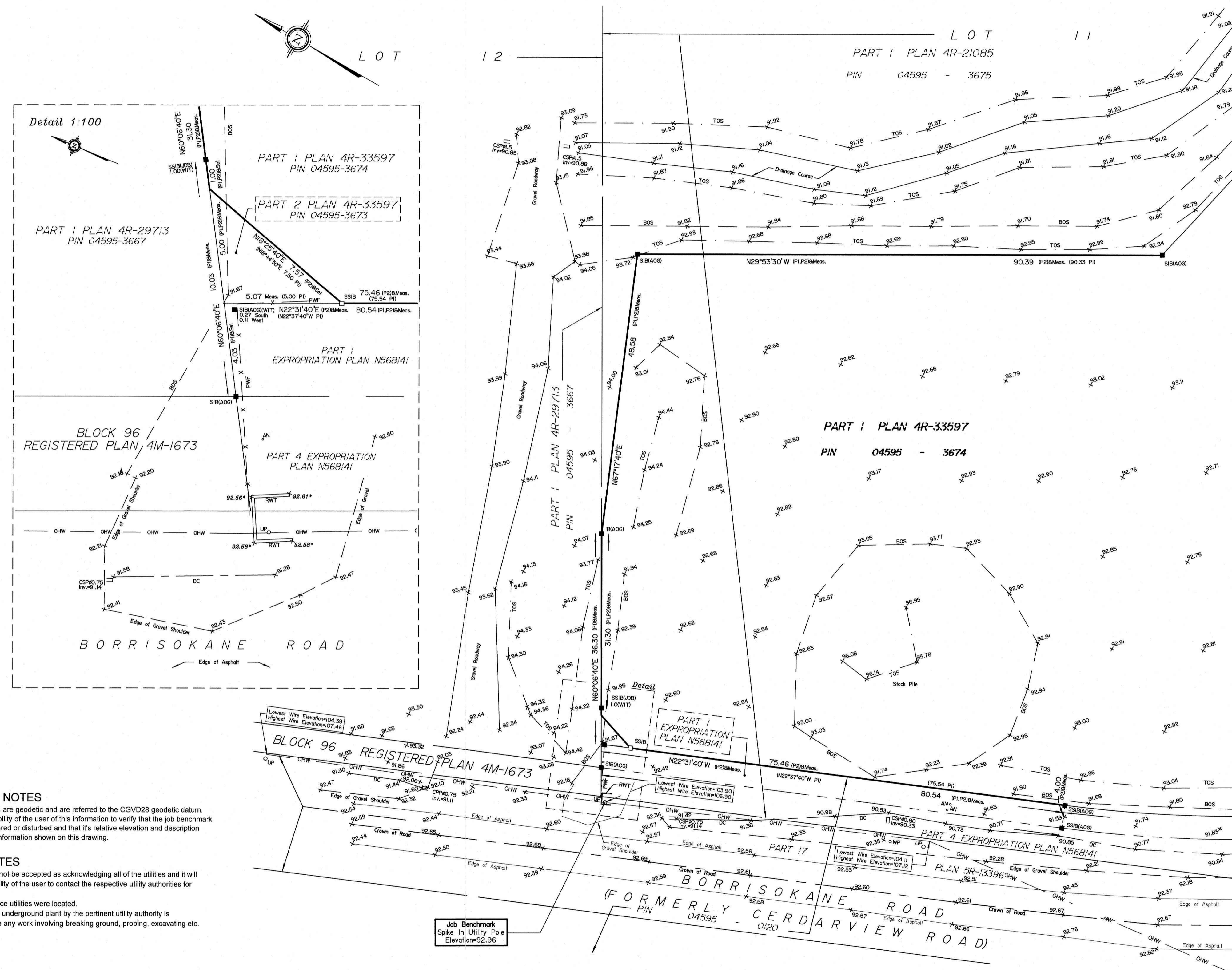
ASSOCIATION OF ONTARIO  
 LAND SURVEYORS  
 PLAN SUBMISSION FORM

V-22497



THIS PLAN IS NOT VALID UNLESS  
 IT IS AN EMBOSSED ORIGINAL  
 COPY ISSUED BY THE SURVEYOR  
 In accordance with  
 Regulation 1026, Section 29 (3).

© Annis, O'Sullivan, Vollebakk Ltd. 2022. THIS PLAN IS PROTECTED BY COPYRIGHT.  
**ANNIS, O'SULLIVAN, VOLLEBEKK LTD.**  
 14 Concourse Gate, Suite 500  
 Nepean, Ont. K2E 7S6  
 Phone: (613) 727-0850 / Fax: (613) 727-1079  
 Email: Nepean@aosvltd.com  
 Job No. 22410-21 Borrisokane January 21, 2022(2)



- ELEVATION NOTES**
- Elevations shown are geodetic and are referred to the CGVD28 geodetic datum.
  - It is the responsibility of the user of this information to verify that the job benchmark has not been altered or disturbed and that its relative elevation and description agrees with the information shown on this drawing.
- UTILITY NOTES**
- This drawing cannot be accepted as acknowledging all of the utilities and it will be the responsibility of the user to contact the respective utility authorities for confirmation.
  - Only visible surface utilities were located.
  - A field location of underground plant by the pertinent utility authority is mandatory before any work involving breaking ground, probing, excavating etc.

Job Benchmark  
 Spike In Utility Pole  
 Elevation=92.96

N:\2021\22410-21\_Borrisokane\_Rd\_Topog\_Survey\Drawings\22410-21\_Borrisokane January 21, 2022.dwg, 2022-01-21 14:18:19 PM