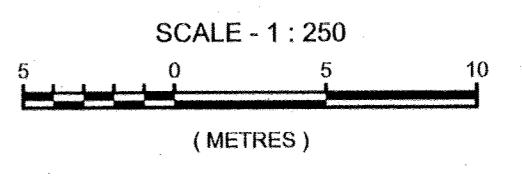


KEY PLAN

SITE PLAN SHOWING
PART OF LOT 13
CONCESSION 3
(BEING PARTS 1 AND 2 ON PLAN 4R-33375)
GEOGRAPHIC TOWNSHIP OF MARCH
CITY OF OTTAWA



METRIC
DISTANCES SHOWN ON THIS PLAN ARE IN METRES AND CAN BE CONVERTED TO FEET BY DIVIDING BY 0.3048

NOTES
BEARINGS SHOWN HEREON ARE GRID BEARINGS AND ARE REFERENCED TO THE 3rd MTM ZONE 9 (76°30' WEST LONGITUDE) NAD-83 (ORIGINAL) DATUM.
ELEVATIONS ARE GEODETIC AND ARE DERIVED FROM THE CANADIAN GEODETIC VERTICAL DATUM OF 1928 (CGVD28).

PROPERTY BOUNDARY DIMENSIONS ARE COMPILED AND CALCULATED FROM INFORMATION ON PLAN 4R-33375 AND IS NOT BASED ON AN ACTUAL SURVEY.

- LEGEND**
- CSP DENOTES CORRUGATED STEEL PIPE
 - OBV DENOTES OBVERT
 - INV DENOTES INVERT
 - GP DENOTES GUY POLE
 - ELEC DENOTES ELECTRIC
 - BP DENOTES BELL POLE

SURVEYOR'S CERTIFICATE
I CERTIFY THAT THE FIELD SURVEY REPRESENTED BY THIS PLAN WAS COMPLETED ON THE 7th DAY OF JUNE, 2021.

Feb 10, 2022
DATE
Andre Roy
ONTARIO LAND SURVEYOR

THIS IS NOT A PLAN OF SURVEY
Boundaries shown hereon are NOT based on an actual survey. Contractors are required to verify boundary locations in the field prior to commencing construction.

Ottawa
PLANNING, REAL ESTATE AND
ECONOMIC DEVELOPMENT DEPARTMENT
SURVEYS & MAPPING BRANCH

PHONE (613) 580-2400
FAX (613) 580-4764
100 CONSTELLATION DRIVE
OTTAWA, ONTARIO, K2G 6J8

PROJECT : 1053, 1075 AND 1145 MARCH ROAD

DATA COMPILATION : TOTAL STATION MAPPING	
DATA TYPE : ELECTRONIC FIELD NOTES	
HORIZONTAL AND VERTICAL DATUM : NAD 83 (ORIGINAL) ZONE 9 MTM - CGVD28	
HYPSOGRAPHIC MODEL : BREAKLINES & SPOT HEIGHTS	
RECOMMENDED HARD COPY SCALE : 1 : 250	
RECOMMENDED CONTOUR INTERVAL : 0.25 m	
A - NUMBER : A-4084	
COMPUTER GRAPHICS FILE NAME : 21720p001.DGN	
JOB - NUMBER : 21720 P001	
FIELD DATE COLLECTED : D.C.	DATE : JAN 1, 2022
CAD / CALCD : WS	DATE : JAN 2, 2022
MAP / CADASTRAL COMPILATION CHECK : AR	DATE : JAN 3, 2022
THIS MAP DEPICTS DIGITAL DATA	

© COPYRIGHT 2022 (CITY OF OTTAWA)

A-4084

© Protected by copyright.
May not be reproduced without permission.

This plan was compiled from plans and documents recorded in the Land Registry System and has been prepared for property indexing purposes only.

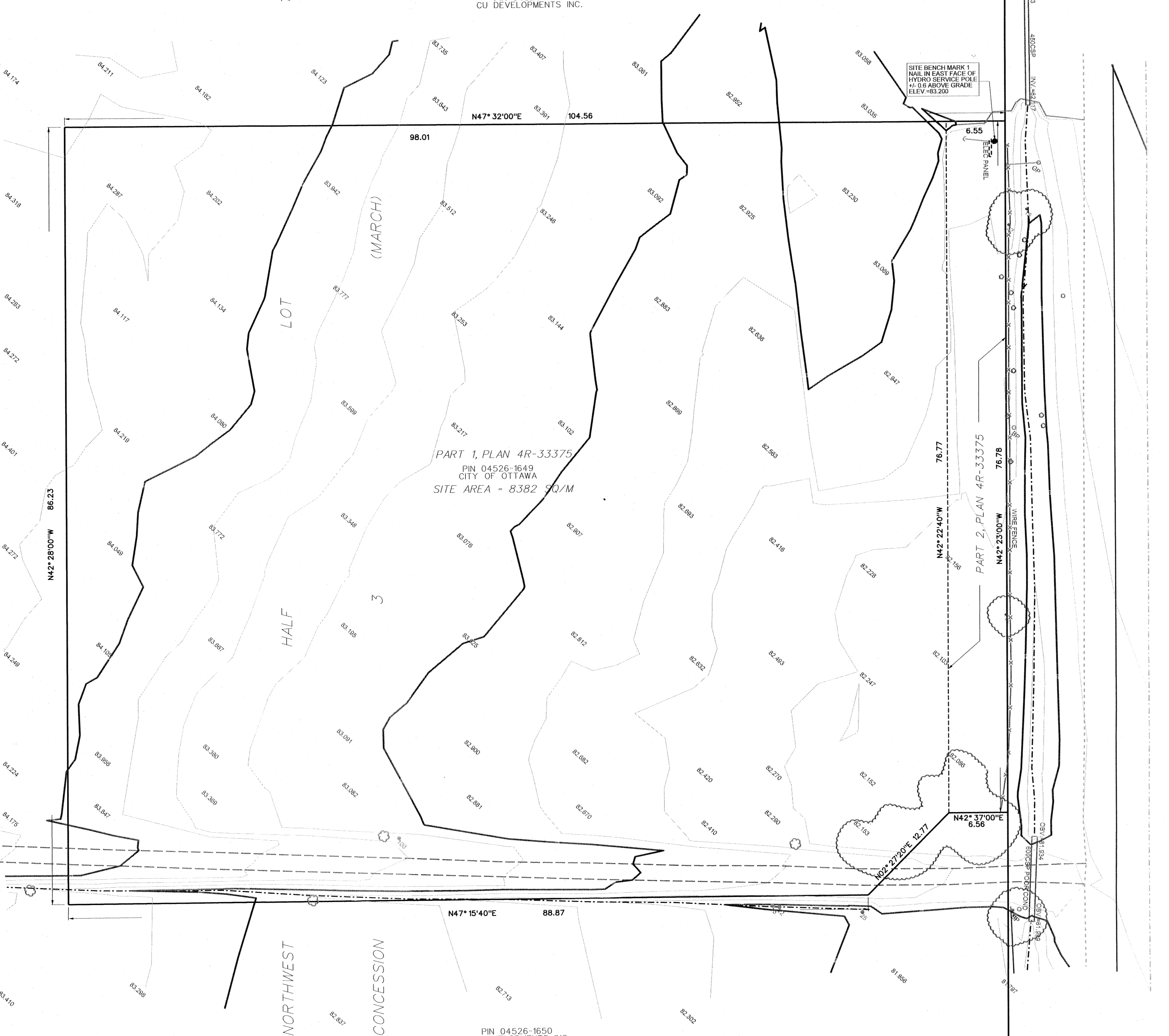
Easements are not noted on adjacent properties.

PART OF PART 6, PLAN 4R-30711
PIN 04526-1650
CU DEVELOPMENTS INC.

PIN 04526-1650
CU DEVELOPMENTS INC.

PART 1, PLAN 4R-33375
PIN 04526-1649
CITY OF OTTAWA
SITE AREA = 8382 SQ/M

PIN 04526-1650
CU DEVELOPMENTS INC.



MARCH ROAD
REGIONAL ROAD NO. 19
ROAD ALLOWANCE BETWEEN CONCESSIONS 3 AND 4
PIN 04527-9099
CITY OF OTTAWA