

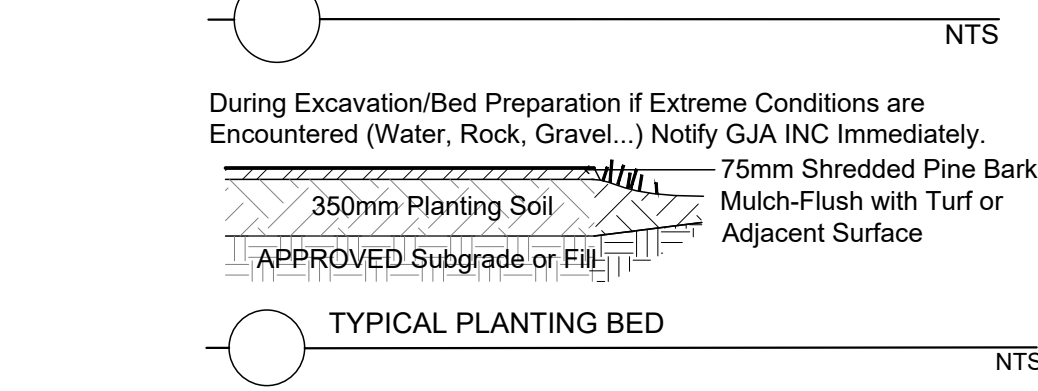
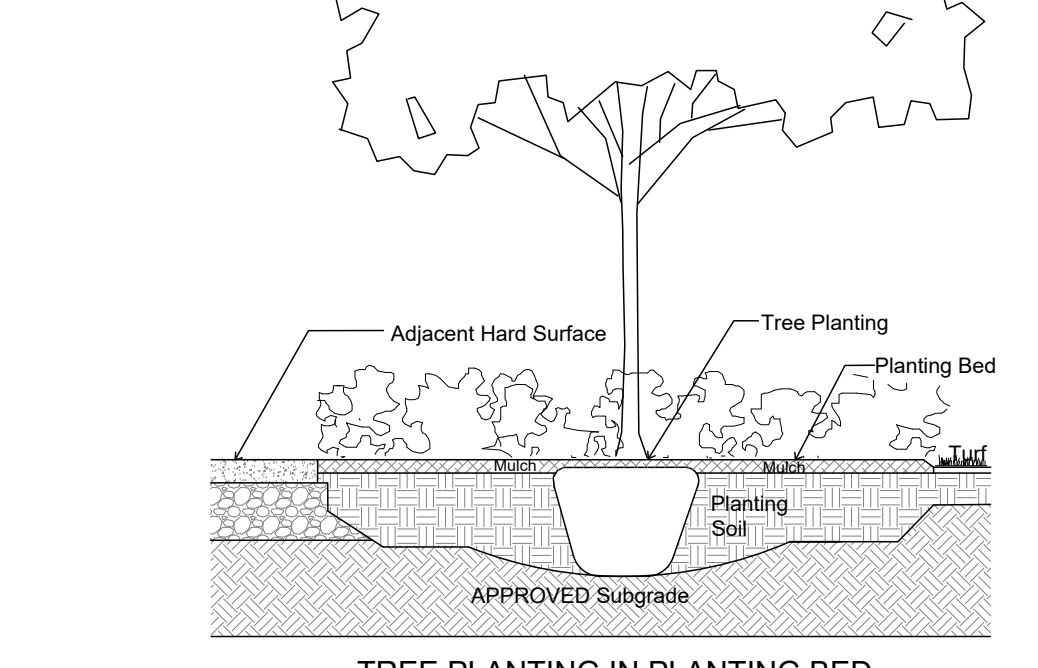
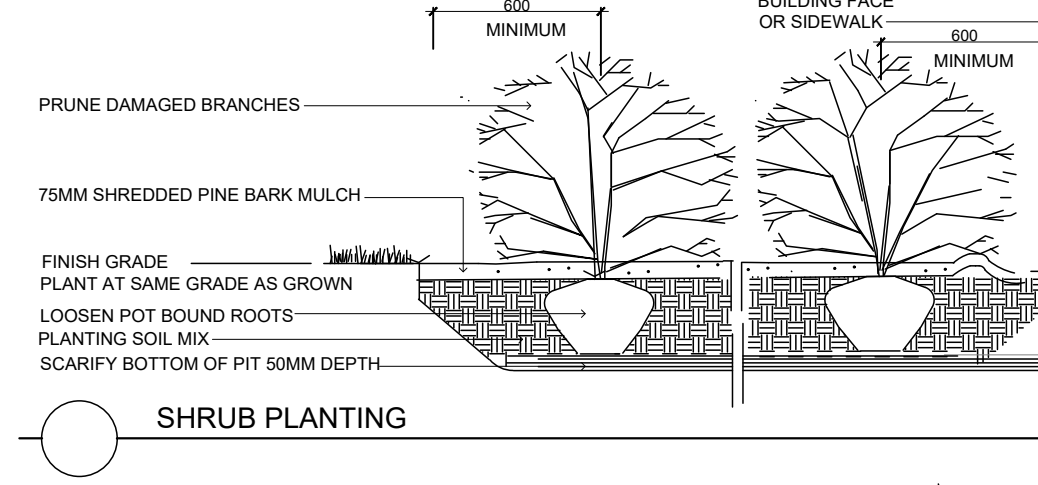
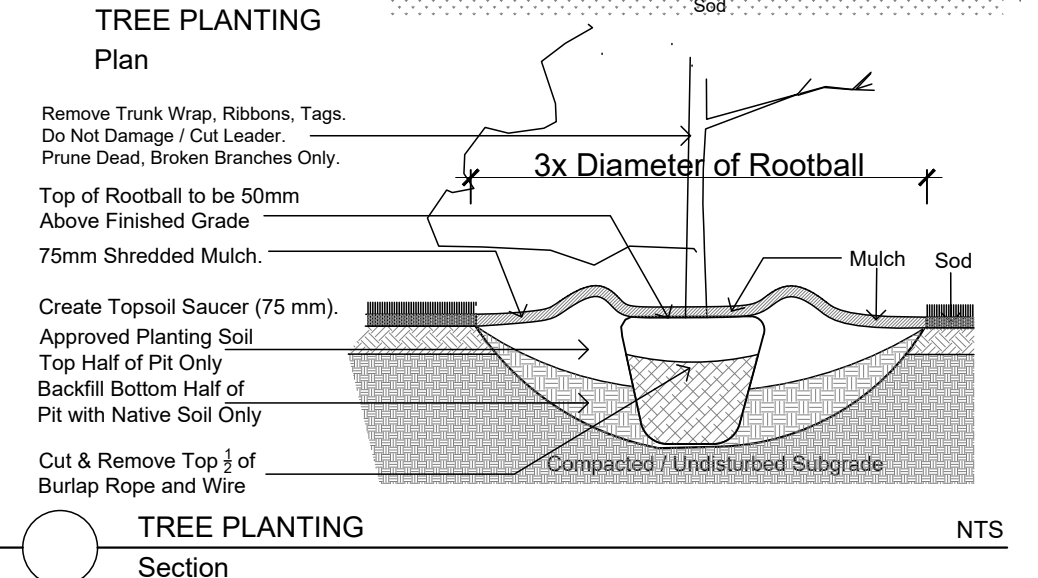
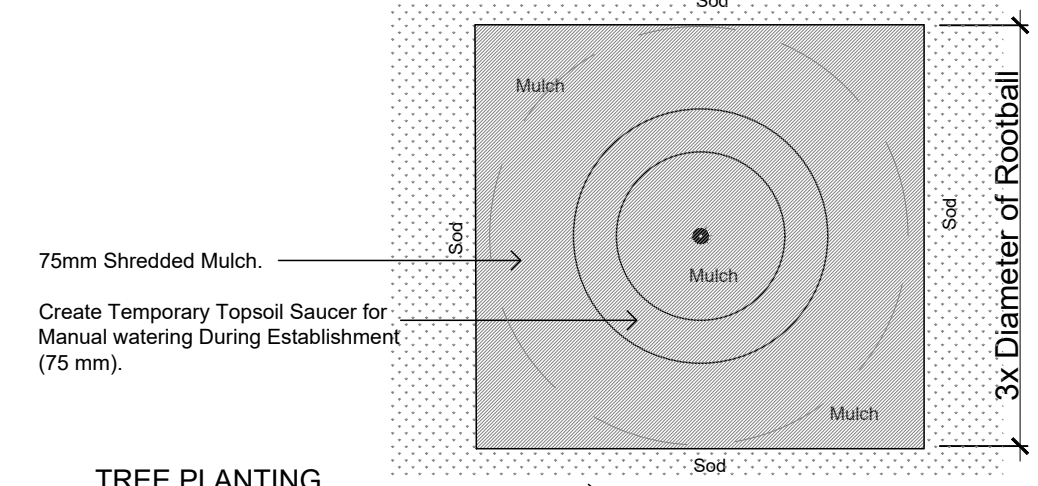
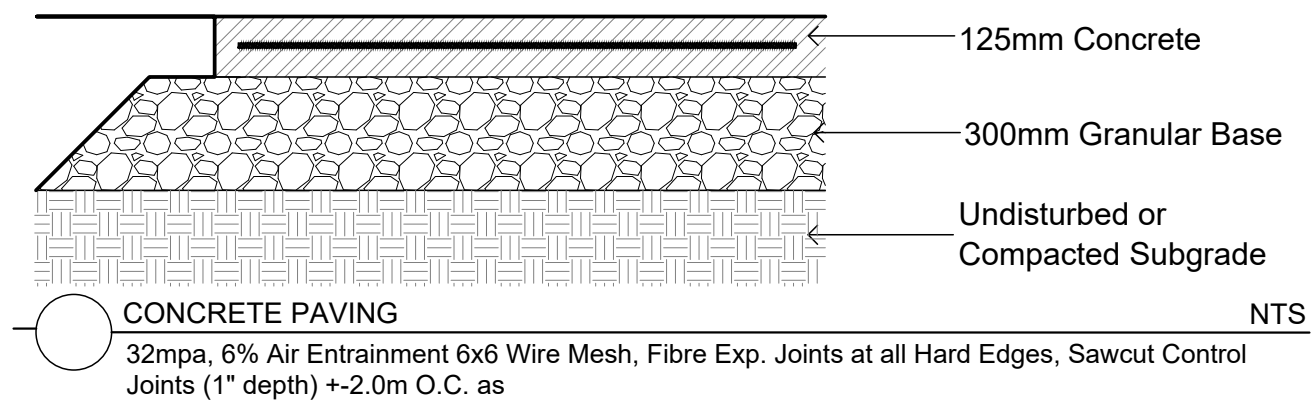
CONCRETE - FINISH LIGHT BROOM, WOOD FLOAT MAGNESIUM FLOAT:
ALL CONCRETE FINISHES TO BE APPROVED BY GJA LANDSCAPE ARCHITECT.

SAWCUT LAYOUT FOR ALL AREAS TO BE MARKED ON SITE IN RED CHALK, REVIEWED, ADJUSTED AND APPROVED BY GJA LANDSCAPE ARCHITECT PRIOR TO ANY CUTTING.

EXPANSION JOINT LAYOUT FOR ALL AREAS TO BE LAID OUT ON SITE - REVIEWED, ADJUSTED AND APPROVED BY GJA LANDSCAPE ARCHITECT PRIOR TO ANY CONCRETE POURING.

PROVIDE COLD JOINT DETAIL at End of Previous Pour/Beginning of New Pour, C/W REBAR DOWELS 500mm O.C.

FINISH: TOOL EDGE FIRST, THEN WIPE OFF TOOL MARKS WHILE APPLYING FINISH.



Drawing Remains the Property of/Copyright Reserved by GJA INC. Do Not Use or Reproduce Without Approval of GJA INC. NOT To Be Used For Construction Unless indicated by Revision: "FOR LANDSCAPE CONSTRUCTION". Contractor is Responsible for Verification of Site Locations of all Utilities. Report any Discrepancies Between Site and Drawing Immediately to GJA INC. Do NOT Proceed Until Clarified.

TURF AREAS TO BE SOD C/W 150MM DEPTH TOPSOIL ON APPROVED SUBGRADE | SOD TO BE #1 GRADE TURFGRASS NURSERY SOD per NSGA - Fine Fescue/Kentucky Bluegrass Sod | PLANTING MIX TO BE APPROVED BY LANDSCAPE ARCHITECT | PLANT MATERIAL TO MEET CNLA STANDARDS/BE APPROVED BY LANDSCAPE ARCHITECT PRIOR TO PLANTING | ALL MATERIALS & WORK TO BE MAINTAINED UNTIL FINAL ACCEPTANCE (MOWING TURF, WEEDING BEDS, WATERING TURF & PLANTS) & INCLUDE 1 YEAR WARRANTY FROM DATE OF FINAL ACCEPTANCE | PROVIDE WATERING OF ALL PLANT MATERIAL AS REQUIRED FOR PROPER ESTABLISHMENT UNTIL END OF WARRANTY PERIOD | REFER TO CIVIL ENGINEER'S DRAWING FOR ELEVATIONS / GRADING |

The Landscape Plan is to be read in conjunction with the grading, servicing, site and survey plan | Bare root material to be planted in season only | All plant material locations to be stated on site by the landscape contractor and checked by the landscape architect prior to planting | All trees to be preserved on or directly adjacent to the site will be protected | Plant material are to be installed a minimum of: 3.0m away from any part of any hydro transformer, 3.0m corridor between a fire hydrant and the curb, a 2.5m radius beside or behind a fire hydrant, 2.0m from any servicing/utility line or structure |

REFER TO TCR BY IFS

Existing Tree - Refer to TCR by IFS for Details/Actions

- LANDSCAPE PLAN LEGEND
- Proposed Coniferous Tree
 - Proposed Deciduous Tree
 - Proposed Planting Bed
 - Proposed Pedestrian Paving
 - Proposed Concrete Paving

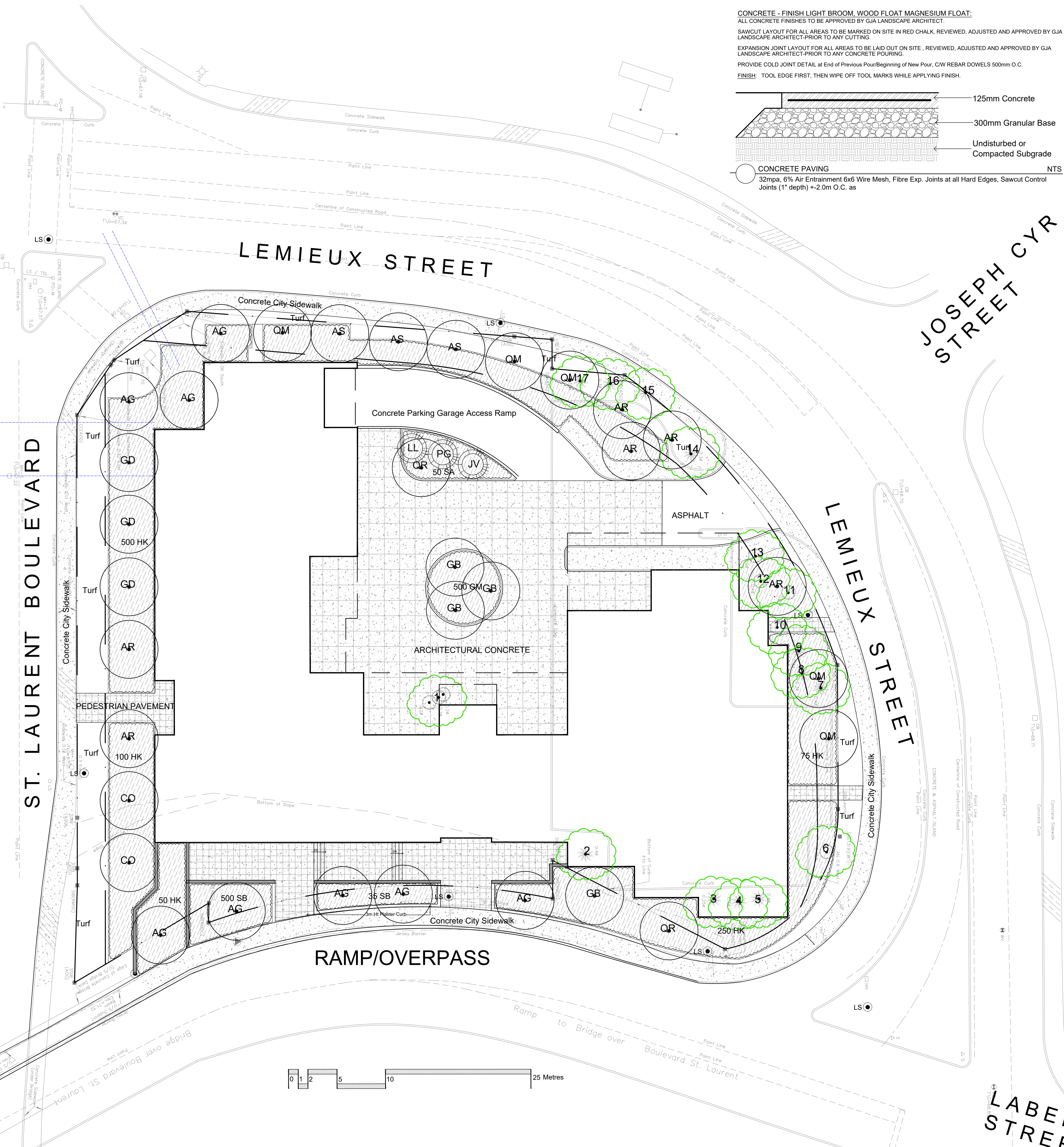
BELOW GRADE SERVICES REFER TO CIVIL /CUP

- WTR U/G Water Service
- STM U/G Storm Service
- SAN U/G Sanitary Service
- GAS U/G Gas Service
- BC U/G TelCo Service
- H U/G Hydro Service
- OHW O/H Hydro Service
- Fire Hydrant
- FD Siamese Connection
- Light Standard Base

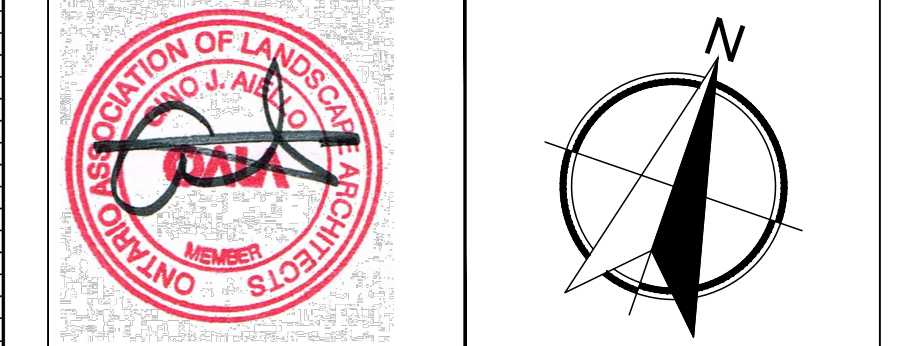
Code	Qty.	Botanical Name	Common Name	Size	Condition
AC		Ametanther canadensis	Tree Serviceberry	50mm cal	B + B specimen
AG		Aspidosiphon glabra	Onion Barkhenge	60mm cal	B + B specimen
AR		Acer rubrum	Red Maple	60mm cal	B + B specimen
AS		Acer saccharum	Sugar Maple	60mm cal	B + B specimen
BP		Betula papyrifera	Paper Birch	60mm cal	B + B specimen
CD		Celtis occidentalis	Common Hackberry	60mm cal	B + B specimen
CO		Cornus sericea	Gray Dogwood	60mm cal	B + B specimen
CG		Cornus rugosa 'Serrata'	Thornless Cockspur Hawthorn	60mm cal	B + B specimen
GB		Gymnocladia dioica	Maidenhair Tree	70mm cal	B + B specimen
GD		Gymnocladia dioica	Maize Tree	60mm cal	B + B specimen
IN		Juglans nigra	Black Walnut	60mm cal	B + B specimen
MA		Malus 'Harvest Gold'	Harvest Gold Crabapple	60mm cal	B + B specimen
MR		Malus 'Red Spire'	Red Spire Crabapple	60mm cal	B + B specimen
NBR		Malus 'Royal Raindrops'	Royal Raindrops Crabapple	60mm cal	B + B specimen
NRS		Malus 'Red Spire'	Red Spire Crabapple	60mm cal	B + B specimen
OV		Ostrya virginiana	Hoopoak	60mm cal	B + B specimen
DM		Quercus macrocarpa	Bur Oak	60mm cal	B + B specimen
GP		Quercus palustris	Pine Oak	60mm cal	B + B specimen
GR		Quercus rubra	Red Oak	60mm cal	B + B specimen
IR		Ilex verticillata	Wintergreen Tree Lilac	60mm cal	B + B specimen
VL		Viburnum lentago	Nannyberry	60mm cal	B + B specimen
AB		Abies balsamea	Balsam Fir	1.5m Ht.	B + B specimen
AC		Abies concolor	Silver Fir	1.5m Ht.	B + B specimen
AV		Abies virginiana	Eastern Red Cedar	1.5m Ht.	B + B specimen
LL		Larix laricina	Eastern Larch / Tamarac	1.5m Ht.	B + B specimen
PAV		Pinus aristata	Bristlecone Pine	1.5m Ht.	B + B specimen
PC		Pinus canadensis	Swiss Stone Pine	1.5m Ht.	B + B specimen
PI		Pinus flexilis	Lumber Pine	1.5m Ht.	B + B specimen
PG		Pinus glauca	White Spruce	1.5m Ht.	B + B specimen
PR		Pinus resinosa	Red Pine	1.5m Ht.	B + B specimen
PS		Pinus strobus	White Pine	1.5m Ht.	B + B specimen

Code	Qty.	Botanical Name	Common Name	Size	Condition
SC		Sarcocornus canadensis	Sarcocornus	80cm Ht.	Pot
AU		Aucostaphylos uva-ursi	Bearberry	90cm Ht.	Pot
CA		Cornus alternifolia	Pagoda Dogwood	150cm Ht.	Pot
DB		Cornus sericea	Gray Dogwood	80cm Ht.	Pot
HK		Hypericum kalmianum	St. John's Wort	40cm Ht.	Pot
PA		Potentilla fruticosa 'Abbotswood'	Abbotswood Potentilla	60cm Ht.	Pot
RF		Rosa rugosa	Swamp Rose	50cm Ht.	Pot
SA		Symphoricarpos albus	Snowberry	60cm Ht.	Pot
EA		Epilobium alba	Meadowweet	60cm Ht.	Pot
SBP		Spiraea bumalda 'Dart's Red'	Dart's Red Spirea	60cm Ht.	Pot
SB		Spiraea bumalda 'Anthony Water'	Anthony Water Spirea	60cm Ht.	Pot
OV		Spring viciae alba	White Common Vicia	60cm Ht.	Pot
VL		Viburnum lentago	Nannyberry	80cm Ht.	Pot
PM		Pinus mugo var. pumilio	Mugo Pine	30cm sp.	Pot
TC		Taxus cuspidata 'Nana'	Dwarf Japanese Yew	60cm Ht.	Pot
TCM		Taxus cuspidata 'Momiol'	Emerald Spreader Yew	60cm Ht.	Pot

Code	Qty.	Botanical Name	Common Name	Condition
AU		Aucostaphylos uva-ursi	Bearberry	8cm Pot
CA		Calamagrostis acutiflora 'Overdard'	Feather Reed Grass	8cm Pot
EP		Echinacea	Purple Coneflower	8cm Pot
GM		Geranium macrorrhizum	Bighead Geranium	8cm Pot
GP		Geranium psilostemon 'Gerwat'	Rozanne Geranium	8cm Pot
PT		Parthenocissus vitacea	Boston Ivy	8cm Pot
DV		Panicum virgatum	Switch Grass	8cm Pot



1	SITE PLAN CONTROL SUBMISSION 1	MAY 20 2022
0	REVIEW/COORDINATION	MAY 13 2022
#	Revision	Date



Property Owner
1209 ST. LAURENT BLVD. INC.
900-2000 PEEL STREET MONTREAL H3A 2W5

Gino J. Aiello | landscape architect GJALA.com
GJA INC. Gino@GJALA.com (514) 286 5130
110 Dorebury Road Unit #9 10 Ottawa Ontario K2T 0C2

Project
MULTI UNIT RESIDENTIAL BUILDING
1209 ST. LAURENT BOULEVARD

Scale: 1:200 Sheet Number
City of Ottawa
Dwg - #####
L1
D07