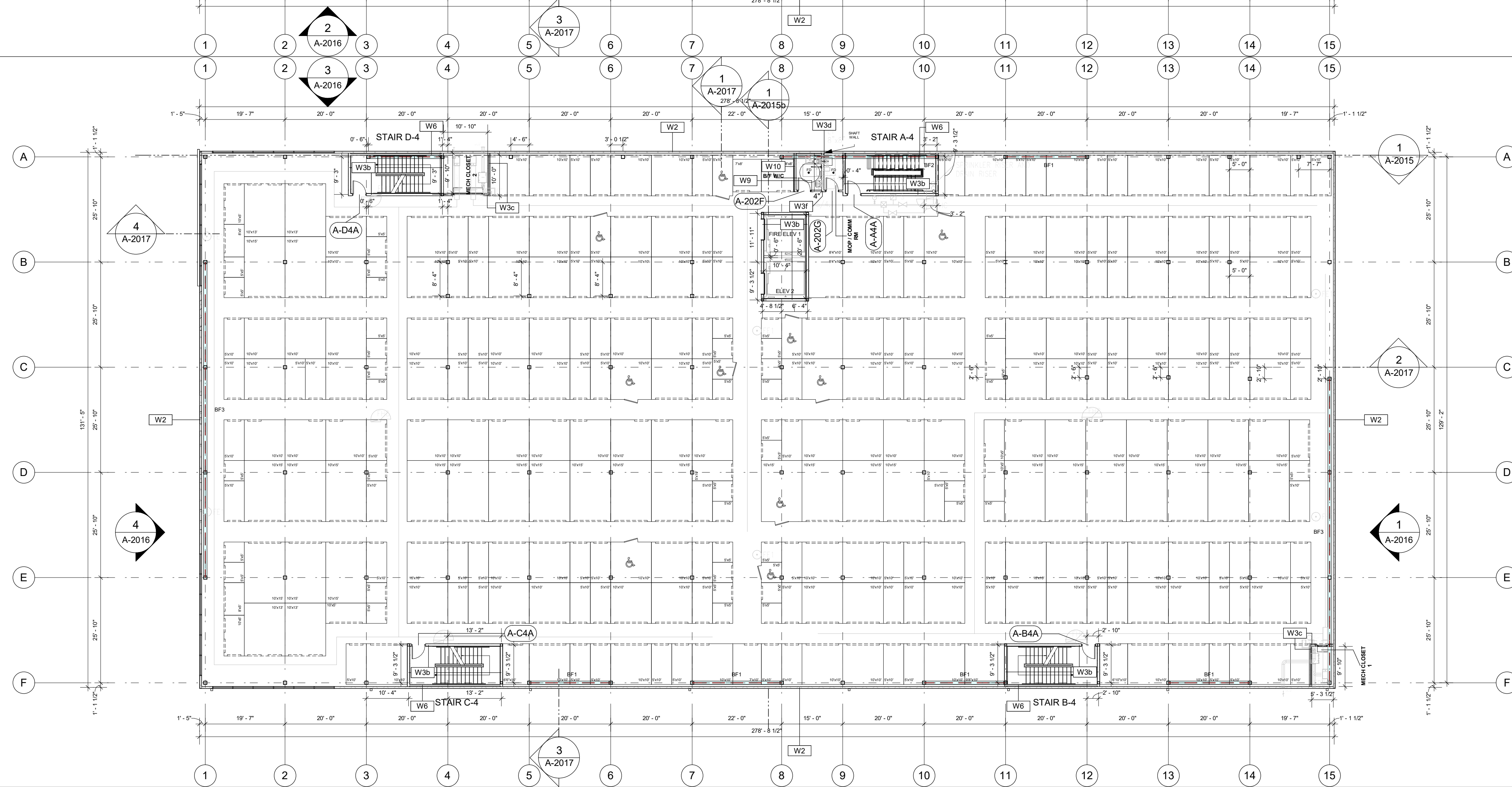


1 BLDG A - THIRD FLOOR PLAN
1/16" = 1'-0"



2 BLDG A - FOURTH FLOOR PLAN
1/16" = 1'-0"

CLIENT
U-Haul CO. (Canada) LTD.

COPYRIGHT
This drawing has been prepared solely for the intended use. Any reproduction or distribution for any purpose other than authorized by IBI Group is forbidden. Written dimensions shall have precedence over scaled dimensions. Contractors shall verify and be responsible for all dimensions and conditions on the job, and IBI Group shall be informed of any variations from the dimensions and conditions shown on the drawing. Shop drawings shall be submitted to IBI Group for general conformance before proceeding with fabrication.

IBI Group Architects (Canada) Inc.
is a member of the IBI Group of companies.

ISSUES		
No.	DESCRIPTION	DATE
1	CONCEPT DESIGN	2022-04-29
2	ISSUED FOR SITE PLAN CONTROL APPLICATION	2022-05-18

CONSULTANTS

ARCHITECTURE / PROJECT MANAGEMENT / TRANSPORTATION:
IBI GROUP - OTTAWA
333 PRESTON STREET UNIT 400, OTTAWA, ON K1S 5N4

CIVIL / LANDSCAPE / PLANNING: NOVATECH
240 MICHAEL COWPLAND DRIVE SUITE 101, KANATA, ON K2M 1P6

GOODKEY, WEEDMARK & ASSOCIATES LIMITED CONSULTING ENGINEERS
1188 WOODWARD DRIVE, OTTAWA, ON, K2C 3R8

CLELAND JARDINE ENGINEERING LTD
200-580 TERRY FOX, KANATA, ON, K2L 4B9

STATE OF THE ART ACOUSTIC INC.
43-1010 POLYTEK STREET, OTTAWA, ON K1J 9J3

J.D. BARNES LTD
103-62 STACIE DRIVE, OTTAWA, ON K2K 2A9

SENEZ CONSULTING LTD.,
208 EVANS AVE. UNIT 2019, TORONTO, ON, M8Z 1J7

SEAL

PRIME CONSULTANT

IBI GROUP
400-333 Preston Street,
Ottawa ON, K1S 5N4, Canada
Tel: 613 225 1311 fax: 613 225 9868
ibigroup.com

PROJECT
U-HAUL MOVING & STORAGE OF OTTAWA
30 FRANK NIGHBOR PLACE, OTTAWA, ON

PROJECT NO:
138165

DRAWN BY: A. Chu
CHECKED BY: Y. Bilbeisi

PROJECT MGR: Y. Bilbeisi
APPROVED BY: H. Semple

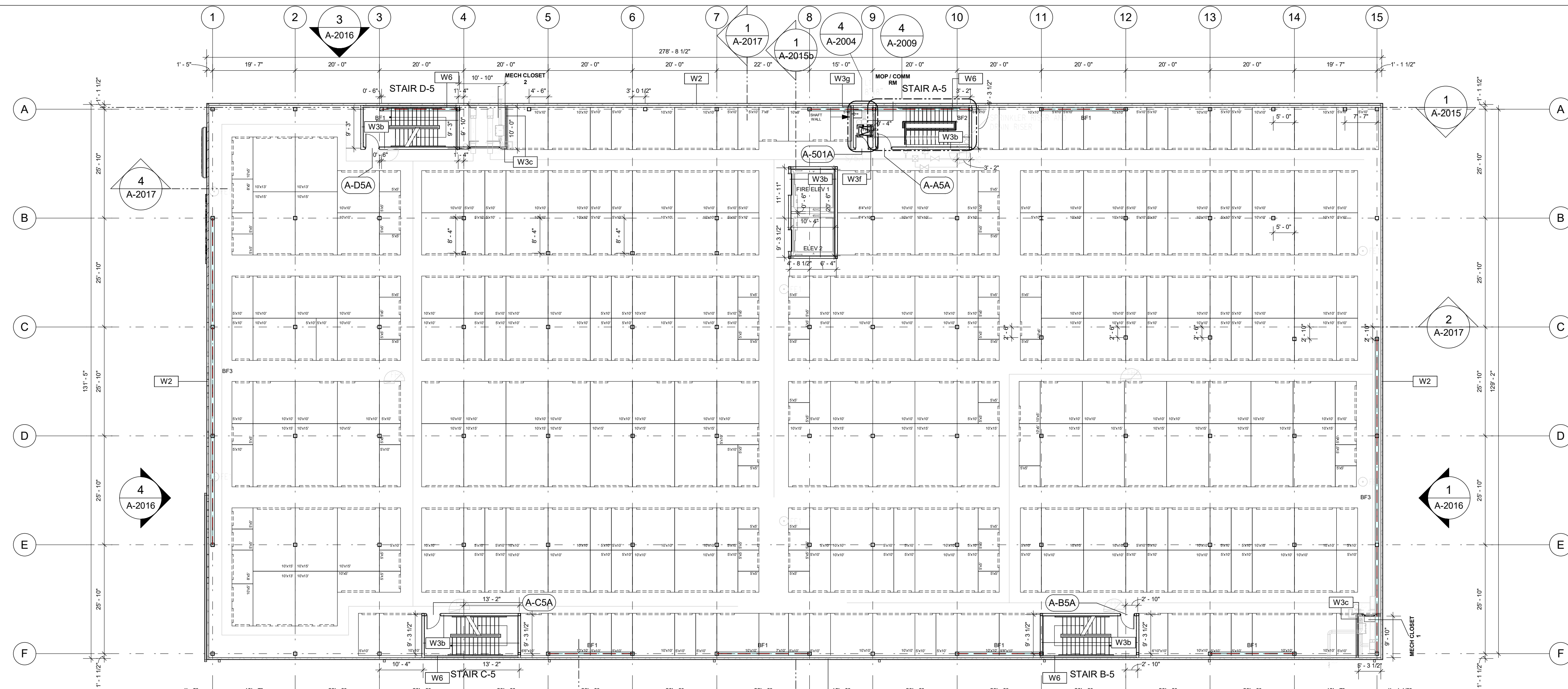
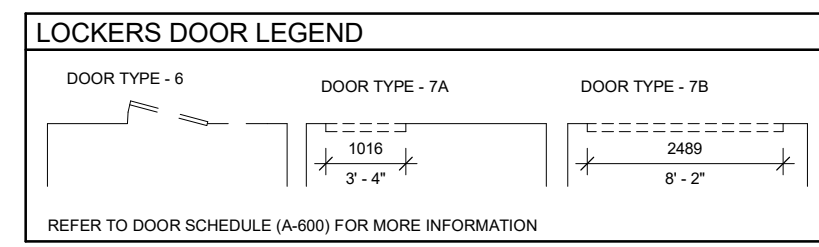
SHEET TITLE
BLDG A - THIRD AND FOURTH FLOOR PLAN

SHEET NUMBER
A-2002

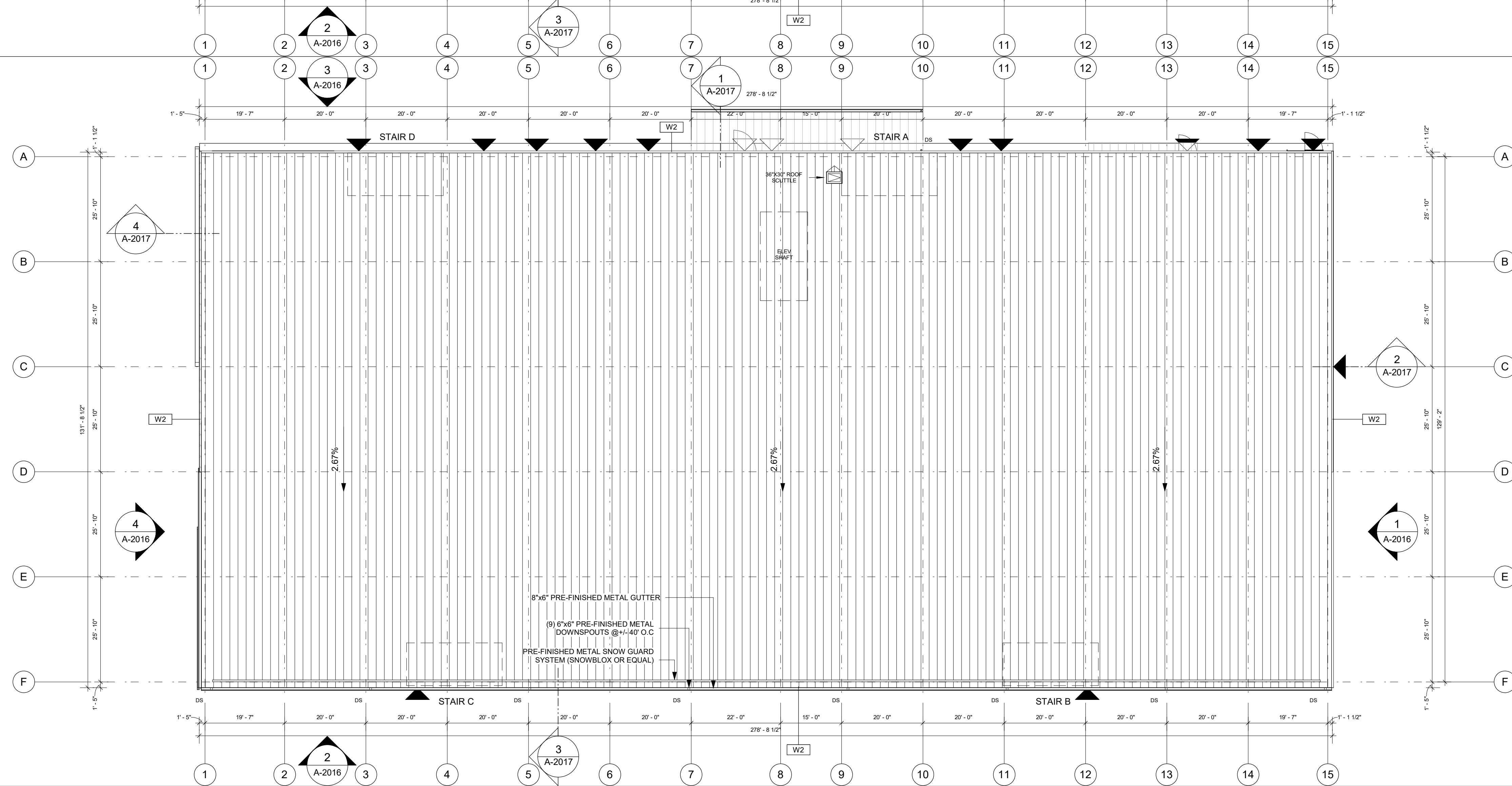
ISSUE
2

2022-05-19 6:37:50 PM

Autodesk Docs/138165-Uhaul_Kanata R2022/UH07-NewIBI_Kanata.rvt



1 BLDG A - FIFTH FLOOR PLAN
1/16" = 1'-0"



2 BLDG A - ROOF PLAN
1/16" = 1'-0"

CLIENT
U-Haul CO. (Canada) LTD.

COPYRIGHT
This drawing has been prepared solely for the intended use. No reproduction or distribution for any purpose other than authorized by IBI Group is forbidden. Written dimensions shall have precedence over scaled dimensions. Contractors shall verify and be responsible for all dimensions and conditions on the job, and IBI Group shall be informed of any variations from the dimensions and conditions shown on the drawing. Shop drawings shall be submitted to IBI Group for general conformance before proceeding with fabrication.

IBI Group Architects (Canada) Inc.
is a member of the IBI Group of companies.

ISSUES		
No.	DESCRIPTION	DATE
1	CONCEPT DESIGN	2022-04-29
2	ISSUED FOR SITE PLAN CONTROL APPLICATION	2022-05-18

CONSULTANTS

ARCHITECTURE / PROJECT MANAGEMENT / TRANSPORTATION:
IBI GROUP - OTTAWA
333 PRESTON STREET UNIT 400, OTTAWA, ON K1S 5N4

CIVIL / LANDSCAPE / PLANNING: NOVATECH
240 MICHAEL COWPLAND DRIVE SUITE 101, KANATA, ON K2M 1P6

GOODKEY, WEEDMARK & ASSOCIATES LIMITED CONSULTING ENGINEERS
1188 WOODWARD DRIVE, OTTAWA, ON, K2C 3R8

CLELAND JARDINE ENGINEERING LTD
200-580 TERRY FOX, KANATA, ON, K2L 4B9

STATE OF THE ART ACOUSTIC INC.
43-1010 POLYTEK STREET, OTTAWA, ON K1J 9J3

J.D. BARNES LTD
103-62 STACIE DRIVE, OTTAWA, ON K2K 2A9

SENEZ CONSULTING LTD.,
208 EVANS AVE. UNIT 2019, TORONTO, ON, M8Z 1J7

SEAL

PRIME CONSULTANT

IBI GROUP
400-333 Preston Street,
Ottawa ON, K1S 5N4, Canada
Tel: 613 225 1311 fax: 613 225 9868
ibigroup.com

PROJECT
U-HAUL MOVING & STORAGE OF OTTAWA
30 FRANK NIGHBOR PLACE, OTTAWA, ON

PROJECT NO:
138165

DRAWN BY:
A. Chu

CHECKED BY:
Y. Bilbeisi

PROJECT MGR:
Y. Bilbeisi

APPROVED BY:
H. Semple

SHEET TITLE
BLDG A - FIFTH FLOOR PLAN AND ROOF PLAN

SHEET NUMBER
A-2003

ISSUE
2

2022-05-19 6:37:51 PM

Autodesk Docs/138165-Uhaul_Kanata R2022/UH07-NewBldg_Kanata.rvt