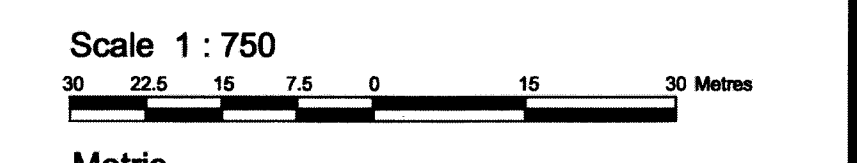


PART 1 PLAN 5R-190 (MTO PLAN P-6096)
 KING'S HIGHWAY No. 417
 PIN 04510 - 0043

SCHEDULE			
PART	BLOCK	PLAN	PIN
1			
2			
3			
4			
5			
6	PART OF 2	4M-1012	ALL OF 04509-0147
7			
8			
9			
10			
11			
12			
13			

Parts 3, 4, 10, 11 & 13 are Subject to Easement Inst.'s N698162 & N698164.
 Part 9 is Subject to Easement Inst. LT1174833.

PLAN OF SURVEY OF
PART OF BLOCK 2
REGISTERED PLAN 4M-1012
CITY OF OTTAWA
 Surveyed by Annis, O'Sullivan, Vollebek Ltd.



Metric
 DISTANCES AND COORDINATES SHOWN ON THIS PLAN
 ARE IN METRES AND CAN BE CONVERTED TO FEET BY
 DIVIDING BY 0.3048.

Surveyor's Certificate
 I CERTIFY THAT:
 1. This survey and plan are correct and in accordance with the Surveys Act, the Surveyors Act and the Land Titles Act and the regulations made under them.
 2. The survey was completed on the 27th day of November, 2017.

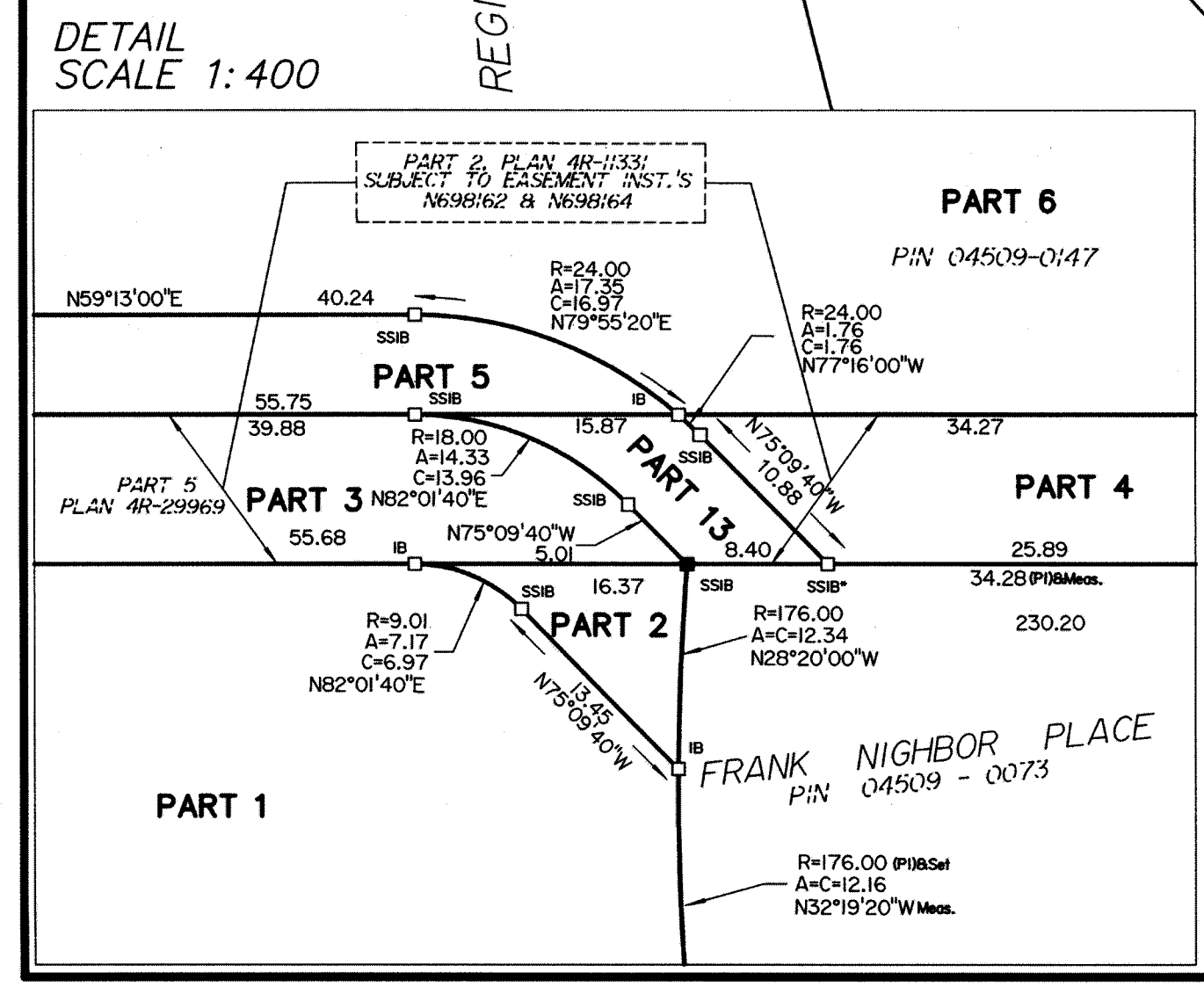
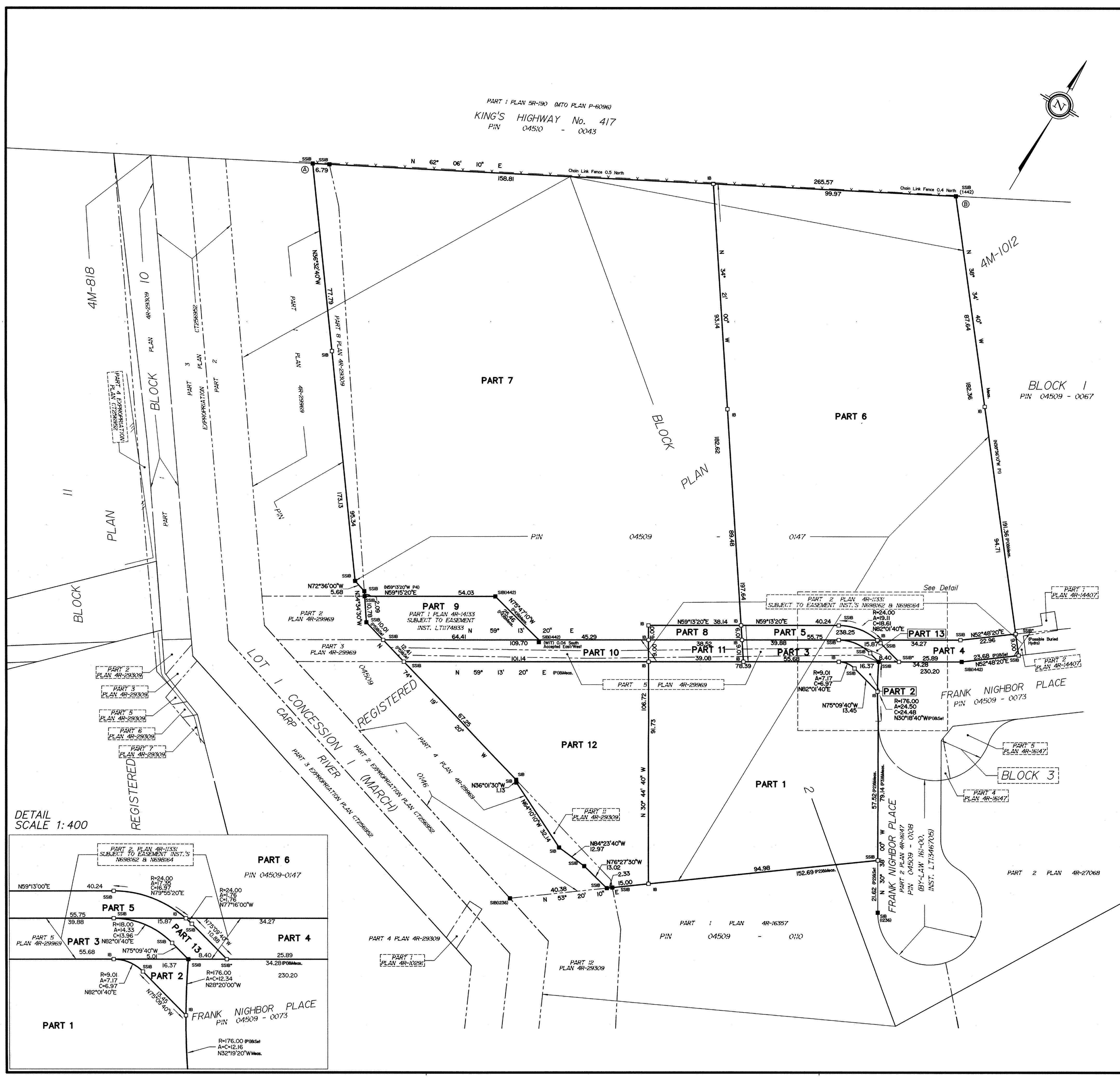
Nov 29/2017
 Date *Andre Roy*
 Ontario Land Surveyor

- Notes & Legend**
- Denotes Survey Monument Planted
 - Survey Monument Found
 - SIB Standard Iron Bar
 - SSIB Short Standard Iron Bar
 - SSIB* Short Standard Iron Bar (0.3m long)
 - IB Iron Bar
 - (WT) Witness
 - (AOG) Annis, O'Sullivan, Vollebek Ltd.
 - Meas. Measured
 - (P1) Registered Plan 4M-1012
 - (P2) Plan 4R-16367
 - (P3) Plan 4R-16147
 - (P4) Plan 4R-14133
 - (P5) Plan 4R-29309

All found bars are (AOG) unless otherwise noted.
 Distances shown on this plan are ground distances and can be converted to grid distances by multiplying by the combined scale factor of 0.999915.
 Bearings are grid, derived from Can-Net 2016 Real Time Network GPS observations on reference points A and B, shown hereon, having a bearing of N62°06'10"E and are referenced to Specified Control Points 01919680037 and 01919791051, MTM Zone 9 (76°30' West Longitude) NAD-83 (original).
 For bearing comparisons, a rotation of 0°26'00" counter-clockwise was applied to bearings on Plan (P1) & (P4) and a rotation of 0°23'50" counter-clockwise was applied to bearings on Plan (P2) & (P3).
 Coordinates are derived from Can-Net 2016 Real Time Network GPS observations referenced to Specified Control Points 01919680037 and 01919791051, MTM Zone 9 (76°30' West Longitude) NAD-83 (original).
 Coordinate values are to urban accuracy in accordance with O. Reg. 216/10.

. 01919680037	Northing 5023507.89	Eastings 351533.87
. 01919791051	Northing 5032569.51	Eastings 343633.72
. Point A	Northing 5018080.85	Eastings 350165.52
. Point B	Northing 5018205.11	Eastings 350400.22

Caution: Coordinates cannot, in themselves, be used to re-establish corners or boundaries shown on this plan.



Y:\2016\15815-16\ANNIS-O-SULLIVAN-VOLLEBEK LTD-4M-1012-12.Plan