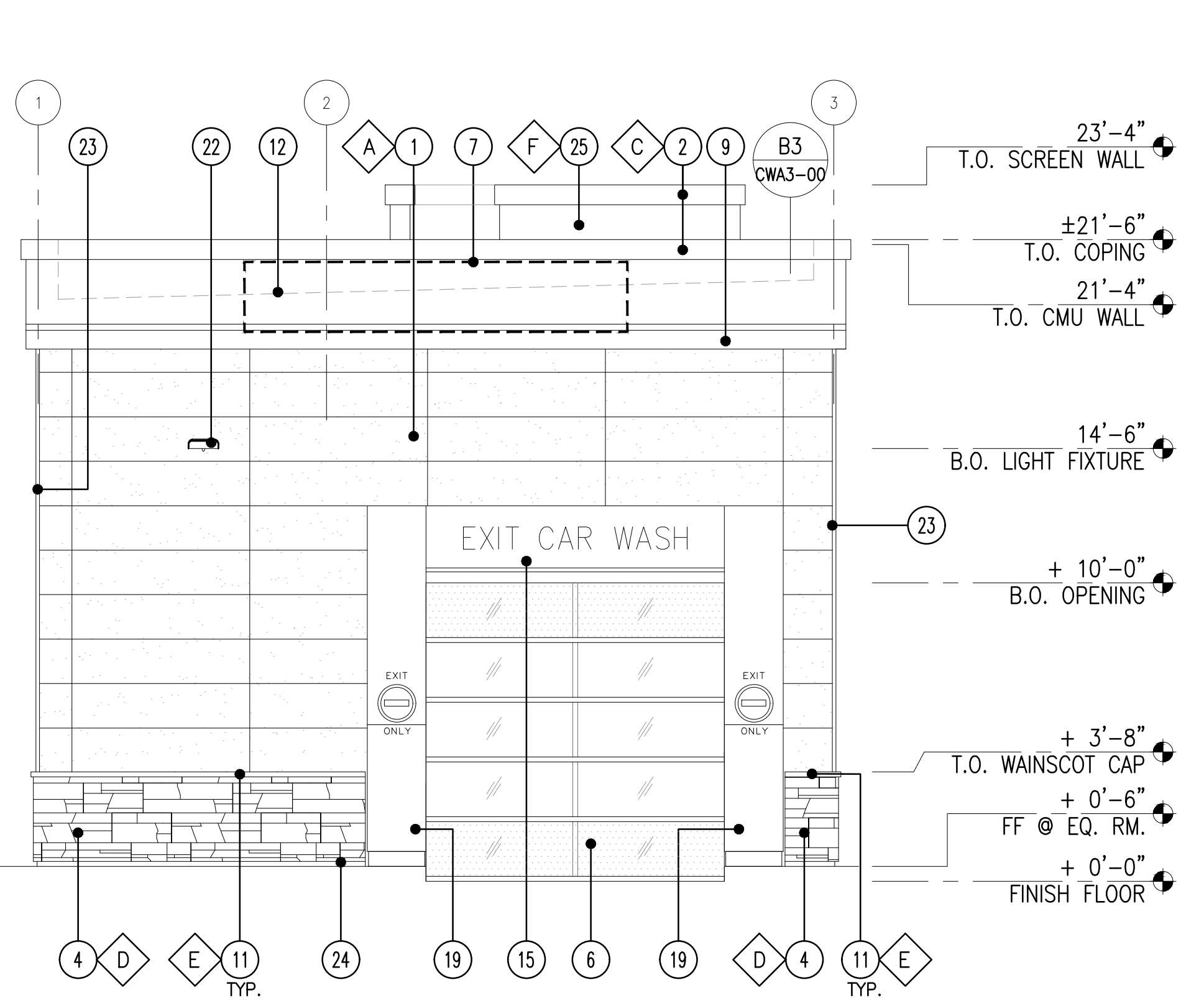
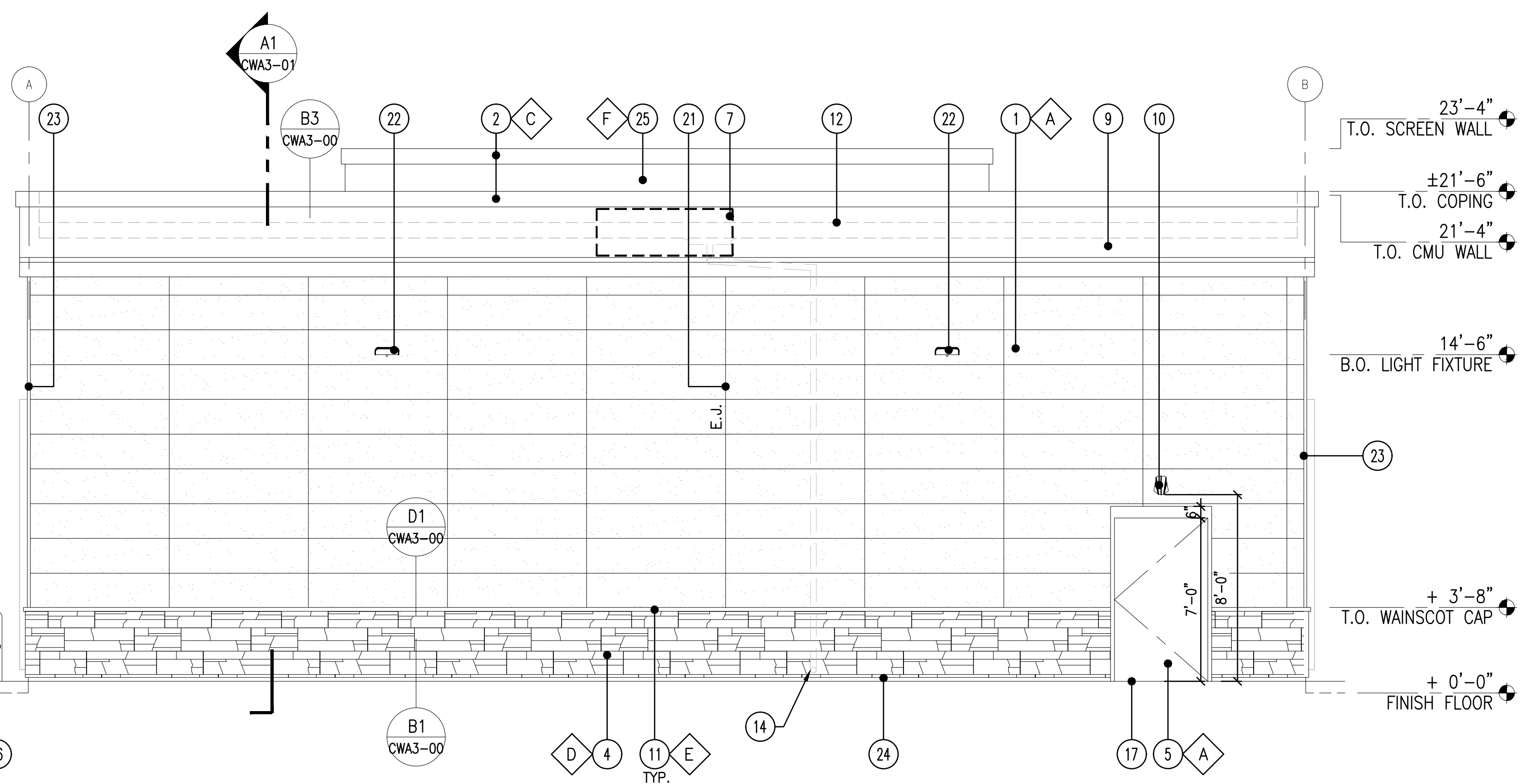


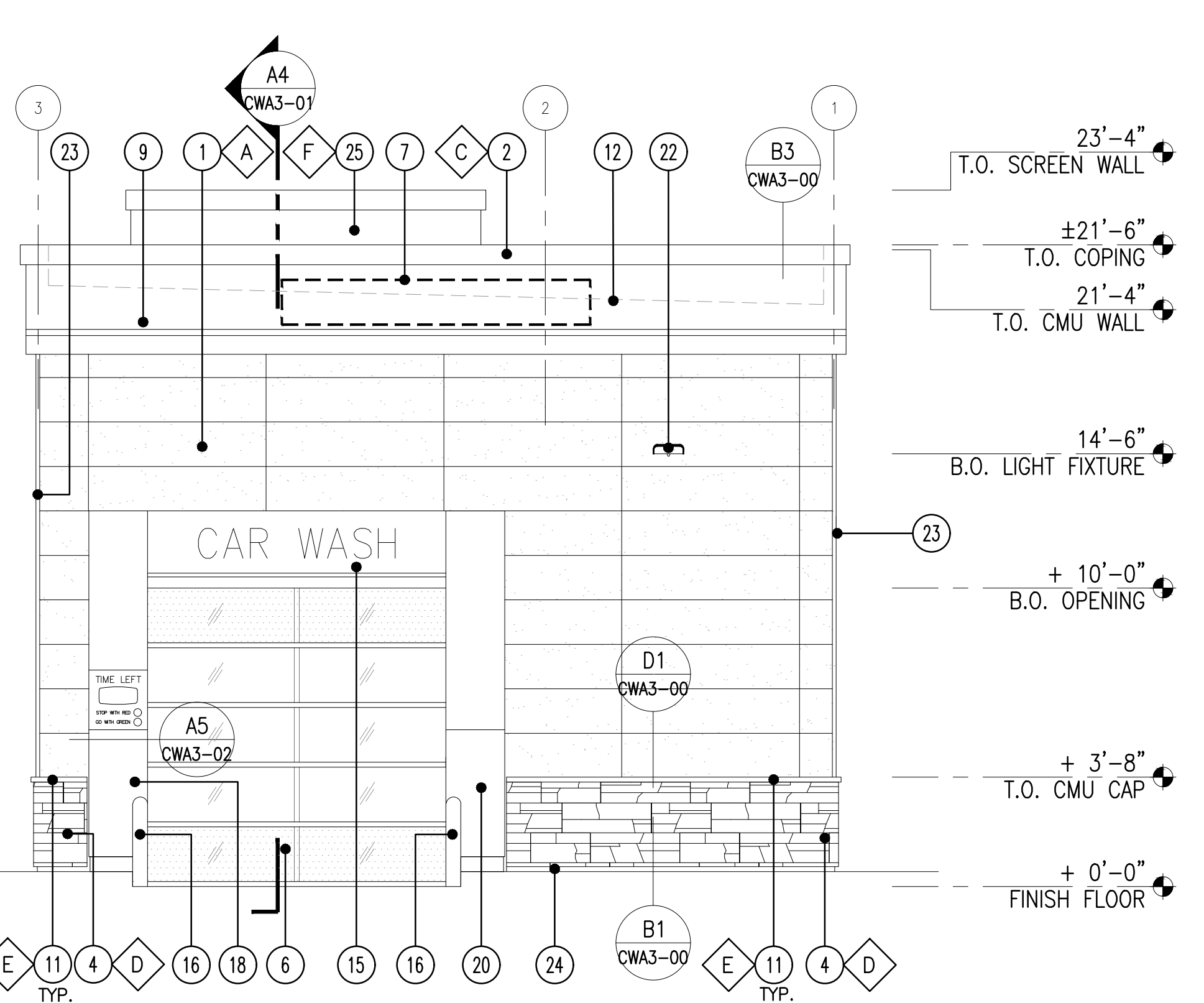
**4 FRONT ELEVATION - SOUTH**  
SCALE: 1/4"=1'-0"



**2 SIDE ELEVATION - WEST**  
SCALE: 1/4"=1'-0"



**3 REAR ELEVATION - NORTH**  
SCALE: 1/4"=1'-0"



**1 SIDE ELEVATION - EAST**  
SCALE: 1/4"=1'-0"

**KEY NOTES (x)**

- NICHHA FIBER CEMENT WALL PANEL SYSTEM
- PRE-FINISHED METAL COPING
- WINDOW FRAME W/ GRAY TINTED GLASS WINDOW SYSTEM. PAINT WINDOW FRAME TO MATCH DARK BRONZE
- 1 3/8" THK. X 6" NICHHA KURASTONE HIGH FIBER CEMENT WAINSCOT
- INSULATED FRP DOOR
- POLYCARBONATE OVERHEAD DOOR. SEE DOOR SCHEDULE.
- LOGO/ CAR WASH SIGN (SHOWN DASHED) PROVED AND INSTALLED BY SIGNAGE VENDOR - SIGNAGE UNDER SEPARATE PERMIT.
- ADDRESS SIGN NUMBERS, 8" HIGH & 1" CONTRASTING BACKGROUND
- ACM BAND PANEL PROVIDED & INSTALLED BY SIGNAGE VENDOR
- EXTERIOR WALL-MOUNTED LIGHTING ABOVE EXTERIOR DOOR
- 1-1/2" HIGH NICHHA FIBER CEMENT CAP INSTALL PER MFR. SPECS.
- LINE OF ROOF
- SPARE
- ROOF DRAIN WITH SHEEP TONGUE. CONTRACTOR TO PROVIDE A CONCRETE SPLASH BLOCK AT THIS DOWNSPOUT LOCATION AT LANDSCAPE AREA. SEE DETAIL D5/CWA1-01.
- PRE-FINISHED ACM PORTAL HEADER. PROVIDE POWER FOR LED LIGHTS AND BACK LIT LETTERS. COORDINATE WITH VENDOR.
- 42"x4.6" DIA. BOLLARD WITH TRAFFIC YELLOW PLASTIC COVER
- ISLAND/SIDEWALK WITH BROOM FINISH. SLOPED 1/4" PER FT. AWAY FROM BUILDING. REFER TO CIVIL DRAWINGS.
- PRE-FINISHED ACM ENTRANCE PORTAL LEG W/ TIMER. PROVIDE POWER FOR TIMER. COORDINATE WITH VENDOR.

**FINISH SCHEDULE (x)**

- PRE-FINISHED ACM EXIT PORTAL LEG
- PRE-FINISHED ACM PORTAL LEG
- CONTROL/EXPANSION JOINT "E.J." LOCATION. SEE DETAIL D5/CWA3-02
- WALL MOUNTED LIGHT FIXTURE, COLOR: BRONZE. SEE ELECTRICAL PLAN
- 1-1/2" NICHHA CORNER KEY EDGE, TYP. TO ALL CORNERS
- NICHHA ESSENTIAL "STARTER" FLASHING
- ROOFTOP EQUIPMENT SCREEN WALLS. PAINT TO MATCH #SW 6095 TOASTY.
- \*\*NICHHA TUFF BLOCK  
- COLOR TO MATCH #SW 6095 TOASTY
- 1" INSULATED, DOUBLE PANELED CLEAR GLASS
- \*SHERWIN WILLIAMS #SW 6090 - JAVA  
- FIRESTONE MANSARD BROWN SR (USE FOR PRE-FINISHED METAL COPING)
- \*\*NICHHA LEDGESTONE BLUFF
- \*\*NICHHA CHISLED SILL TAN
- METAL PANEL  
- COLOR TO MATCH #SW 6095 TOASTY

\* USE SHERWIN WILLIAMS MANUFACTURER ONLY  
\*\* COLOR TO BE PRE-ORDERED TO ENSURE AVAILABILITY AT TIME OF CONSTRUCTION  
\*\*\* PURCHASED BY CIRCLE K/INSTALLED BY C.C.  
G.C. TO COORDINATE WITH CK PM AND OWNER'S REP circlek@nichha.com

A	ISSUED FOR INFORMATION	MAY 16 2022	J.B.	C.F.
No.	REVISIONS	Date	By	App.

Disclaimer: exp Services Inc. This file is being supplied as a matter of course and is not to be taken as an agreement to, associated with or in placement of copies of the drawings, and only print copies of drawings with signed stamps are to be considered as true and final as issued by our office. Thank you.

**exp Services Inc.**  
1-1-905.793.9800 | 1-1-905.793.0641  
1595 Clark Boulevard  
Brampton, ON L6T 4V1  
Canada  
www.exp.com



- BUILDINGS • EARTH & ENVIRONMENT • ENERGY •
- INDUSTRIAL • INFRASTRUCTURE • SUSTAINABILITY •

Owner/Client:  
**CIRCLE K**  
Location:  
1545 WOODROFFE AVE.  
OTTAWA, ON

Title:  
**EXTERIOR ELEVATIONS**

Designed By:	Drawn By: J.B.	Checked By: C.F.
Scale: AS NOTED	Date: MARCH 2022	City Drawing No.:
Project No.: BRM00606364-B0	Drawing No.:	<b>CWA2-00</b>

CITY DWG. # 17094