

LEGEND

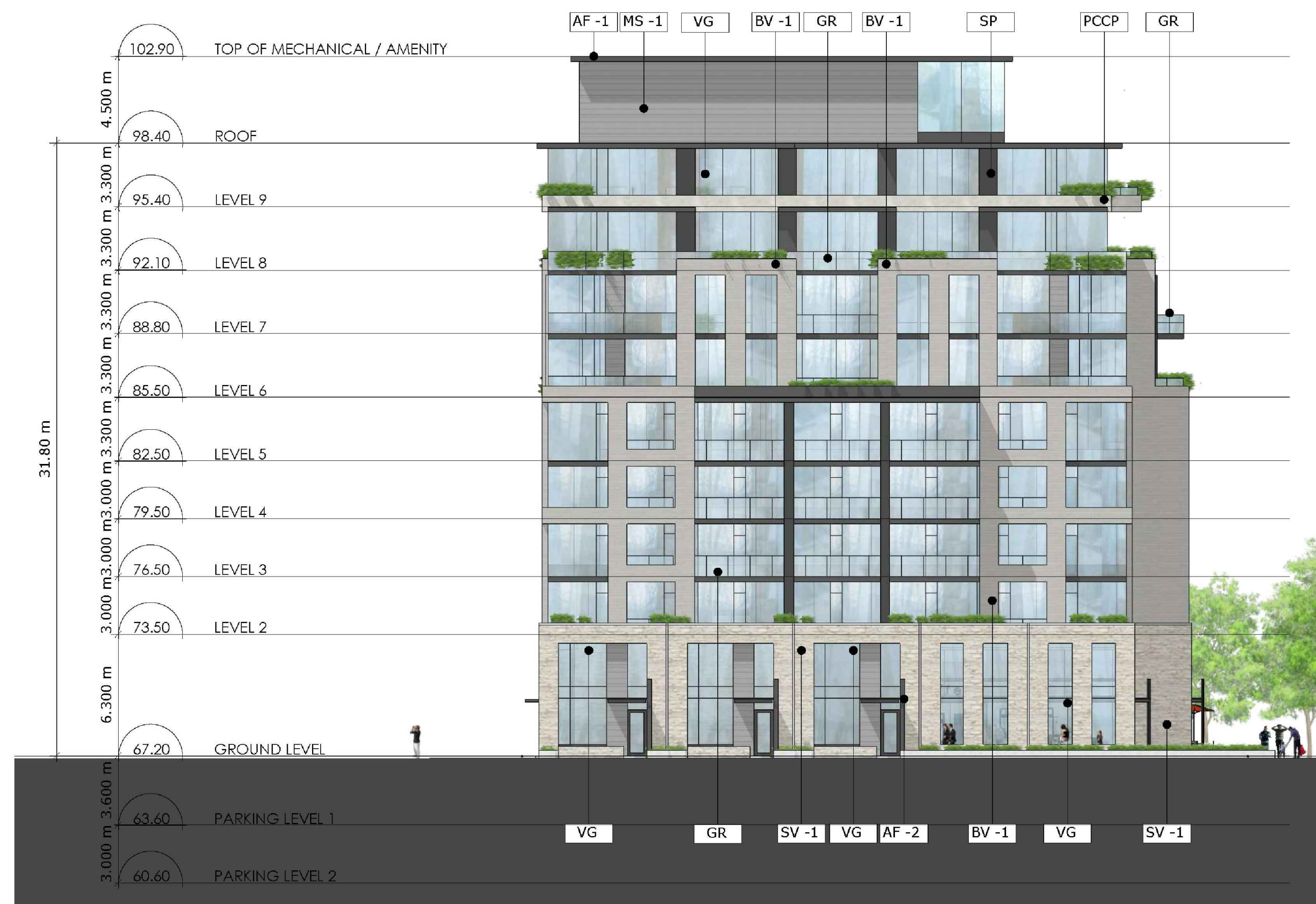
- AF -1 ALUMINUM FLASHING 1
- AF -2 ALUMINUM FLASHING 2
- AP -1 ALUMINUM PANEL 1
- AP -1 ALUMINUM PANEL 1
- BV -1 BRICK VENEER 1
- GR GLASS RAILING
- MS 1 METAL SIDING-1
- OH OVERHEAD DOOR
- PCCP PRE-CAST CONCRETE PANEL
- SP SPANDREL PANEL
- SV-1 STONE VENEER 1
- VG VISION GLASS



1 NORTH ELEVATION
A1.02 1:200



3 WEST ELEVATION
A1.02 1:200



2 SOUTH ELEVATION
A1.02 1:200



4 EAST ELEVATION
A1.02 1:200

no.	date	revision
01	13/MAY/22	ISSUED FOR SPA

It is the responsibility of the appropriate contractor to check and verify all dimensions on site and report all errors and/or omissions to the architect.

All contractors must comply with all pertinent codes and by-laws.

Do not scale drawings.

This drawing may not be used for construction until signed.

Copyright reserved.

Hobin Architecture Incorporated
 63 Pamela Street
 Ottawa, Ontario
 Canada K1S3K7
 T: 613-238-7200
 F: 613-235-2005
 E: mail@hobinarc.com
 hobinarc.com

HOBIN ARCHITECTURE

PROJECT/LOCATION:
70 RICHMOND

DRAWING TITLE:
ELEVATIONS

DRAWN BY: RL	DATE: 2022-05-13	SCALE: 1:200
-----------------	---------------------	-----------------

PROJECT:
1909

DRAWING NO.:
A1.02

REVISION NO.:
DWG 0000