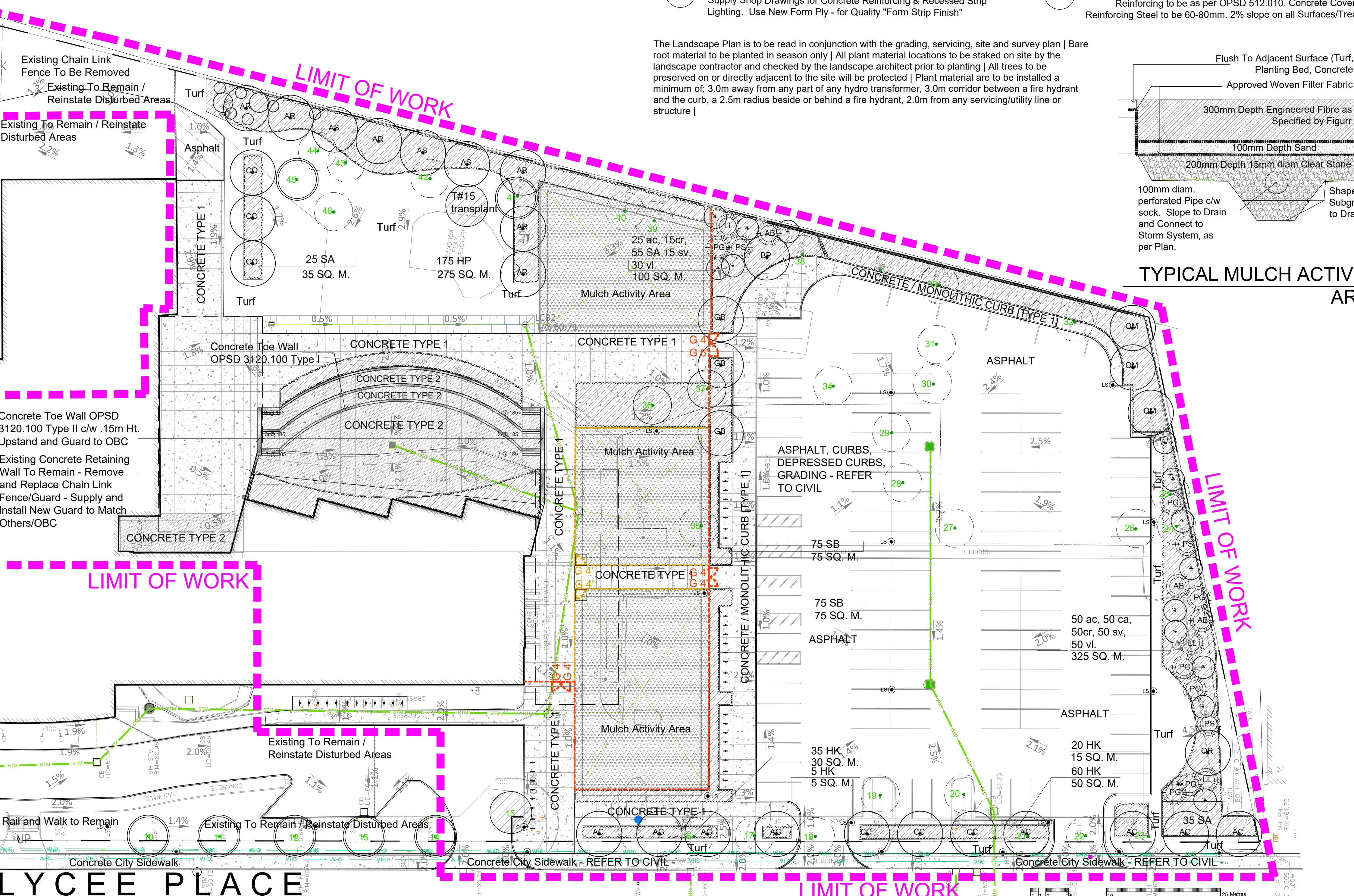
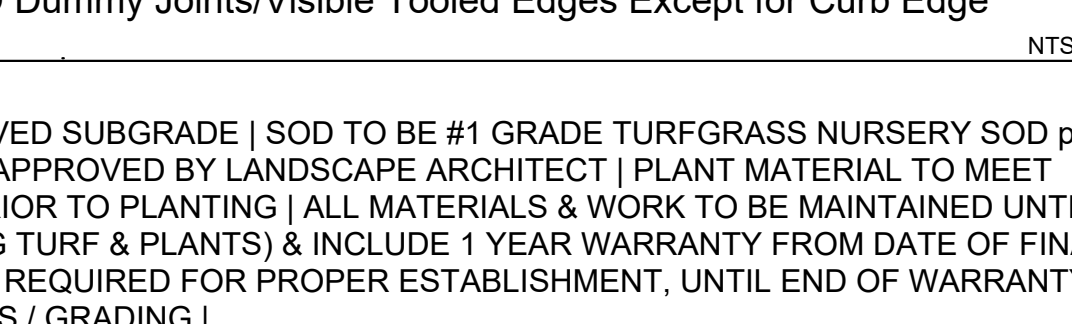
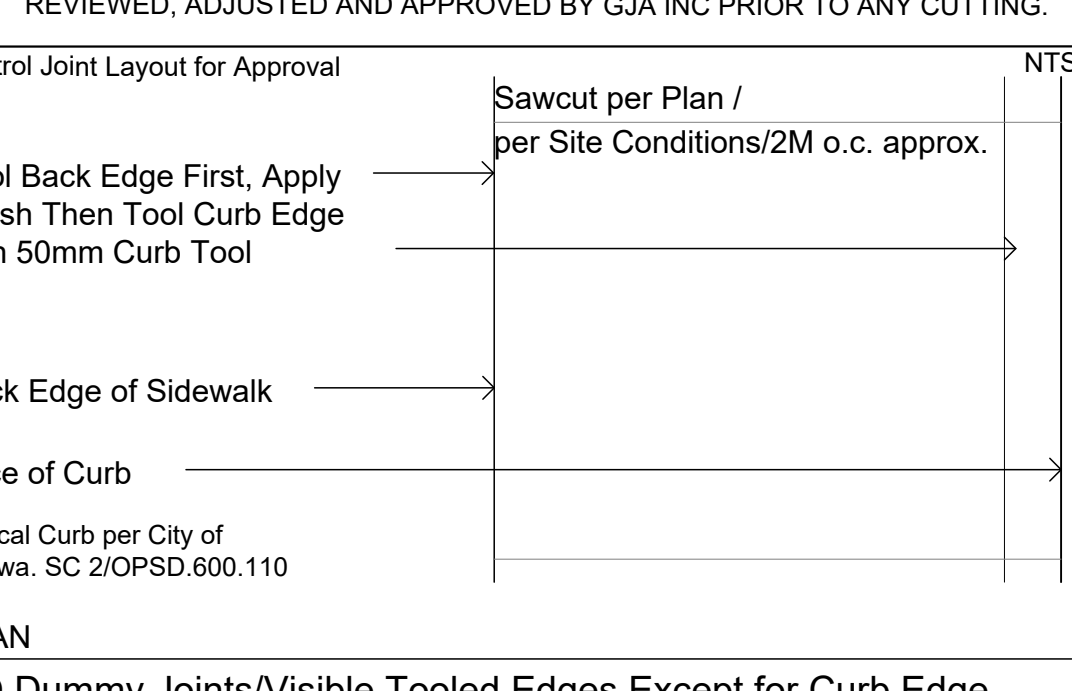
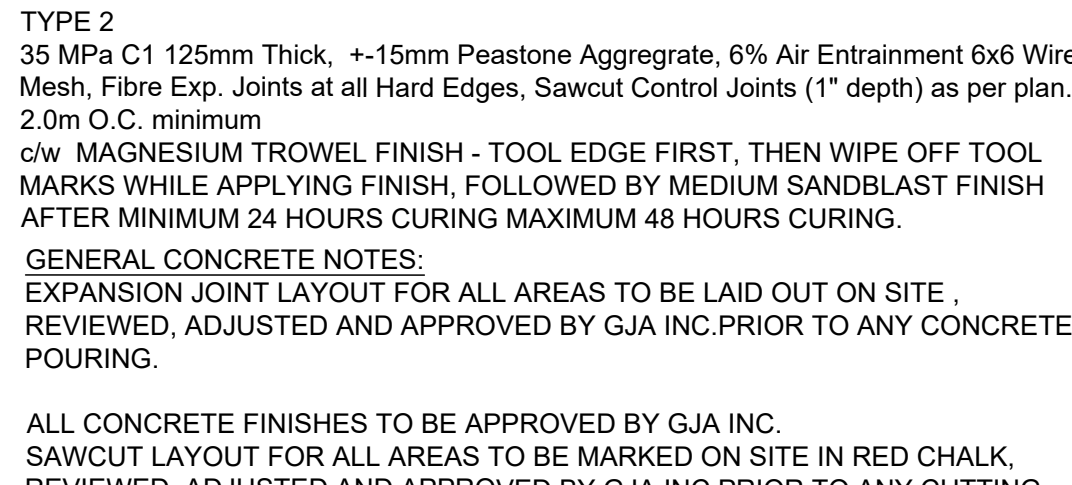
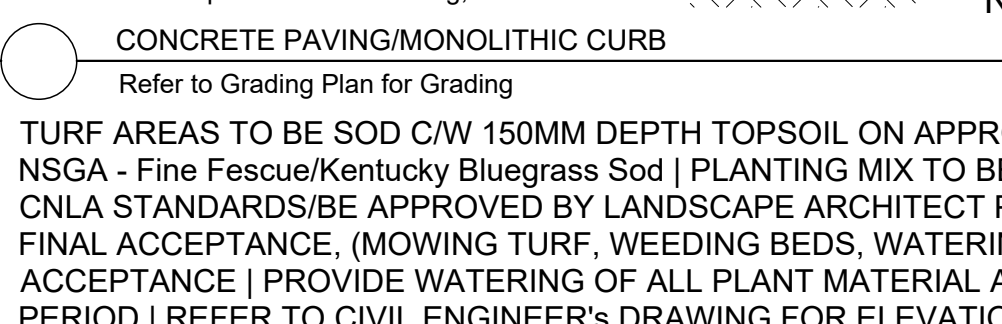
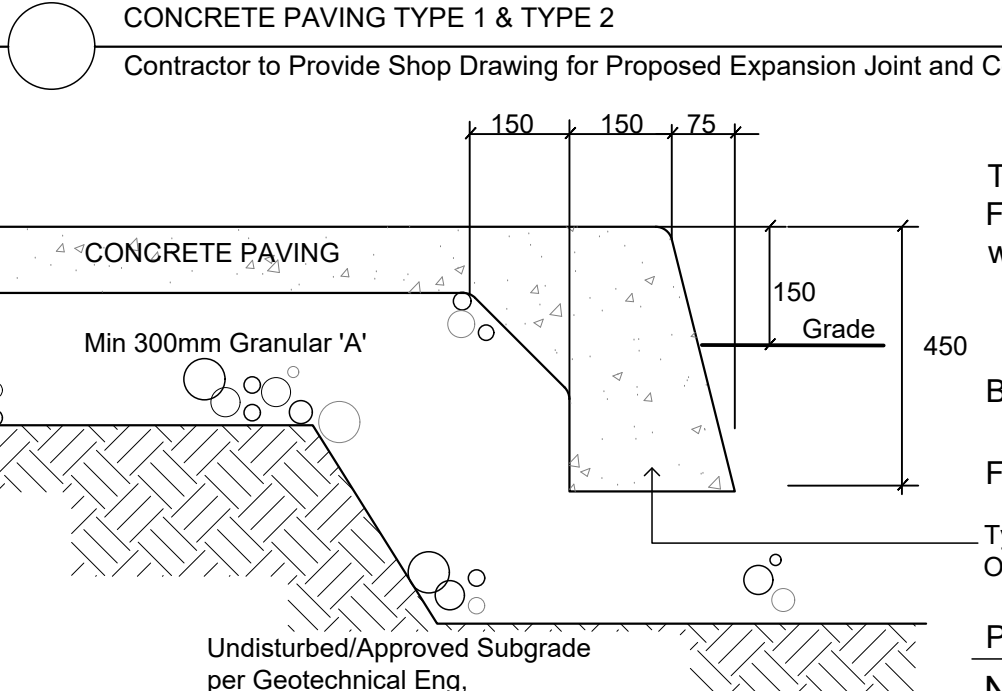
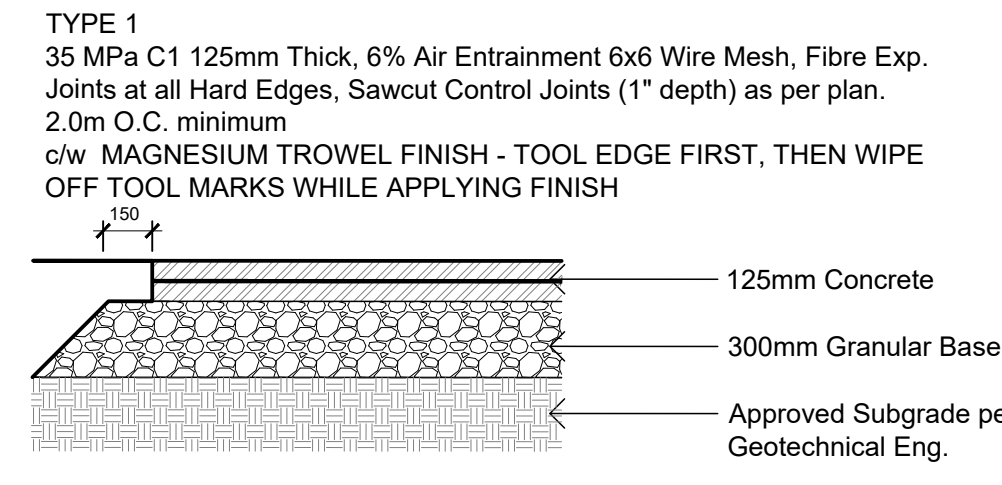
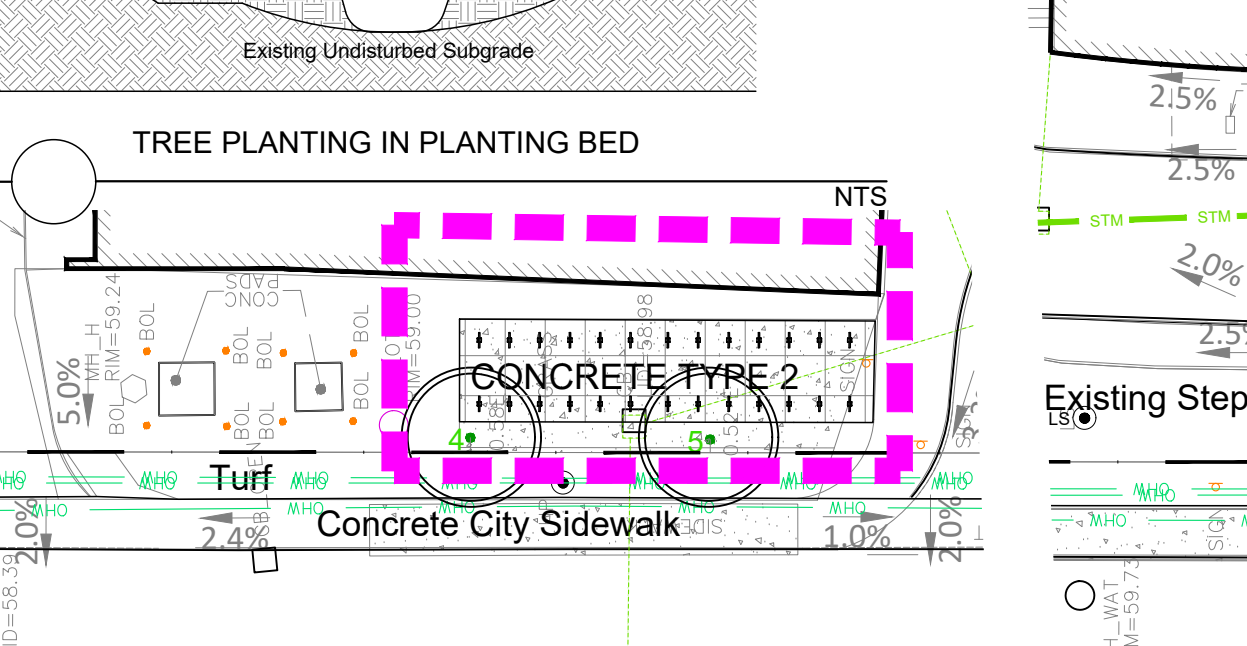
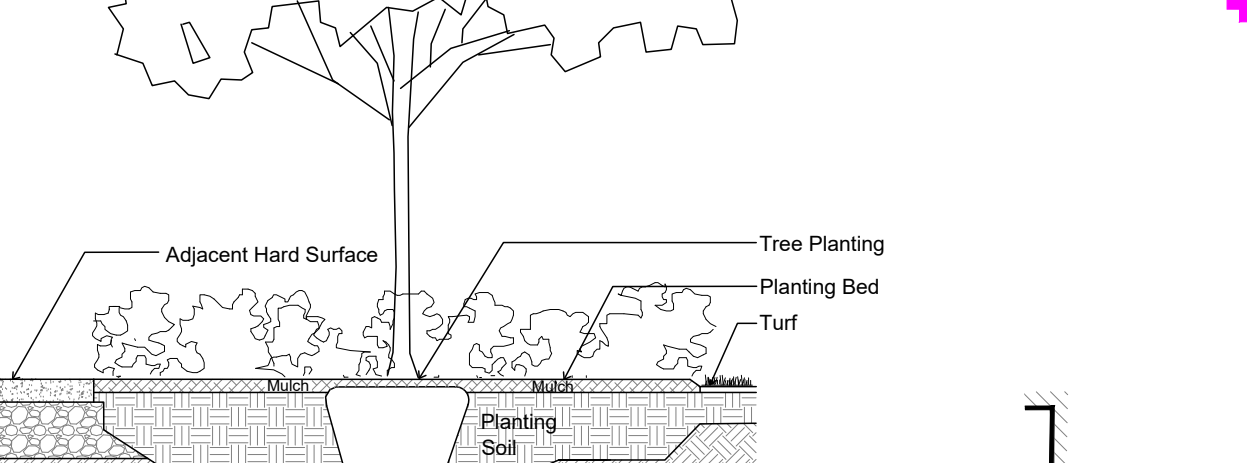
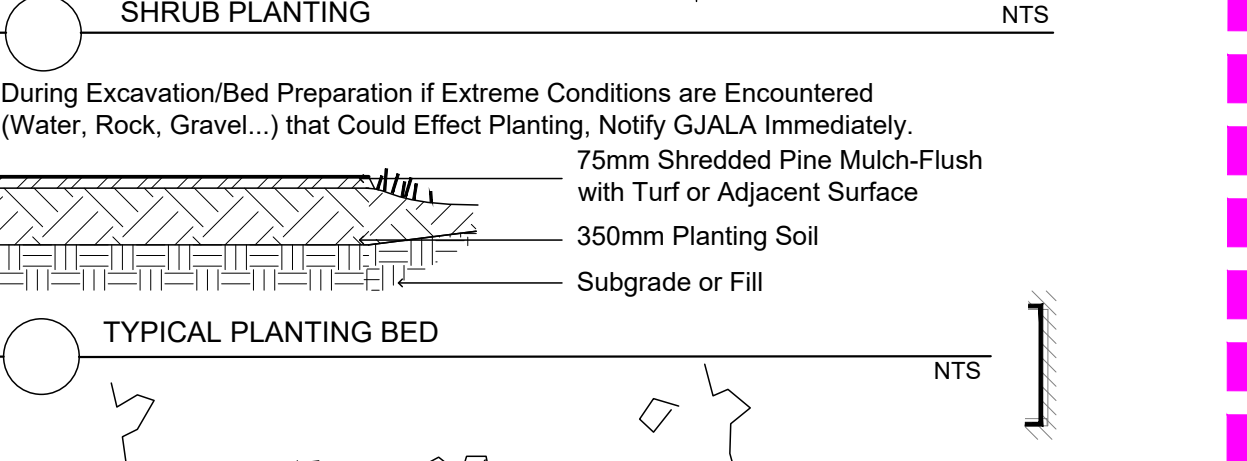
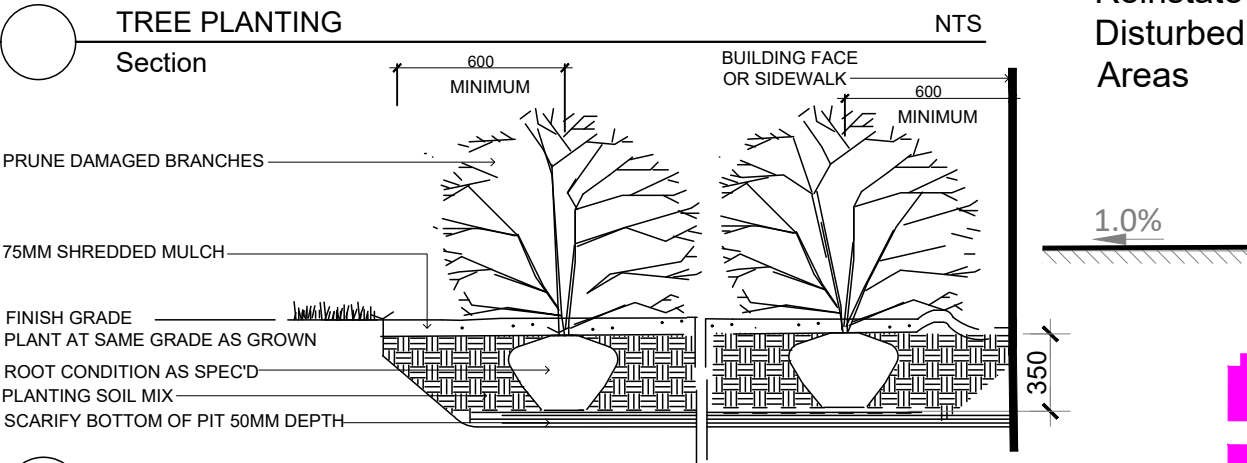
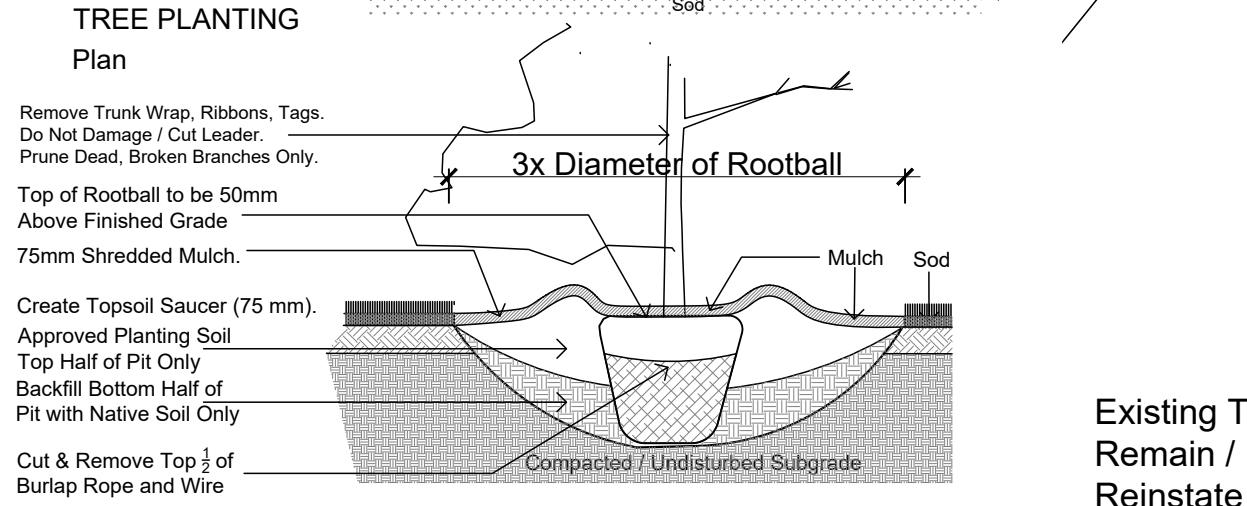
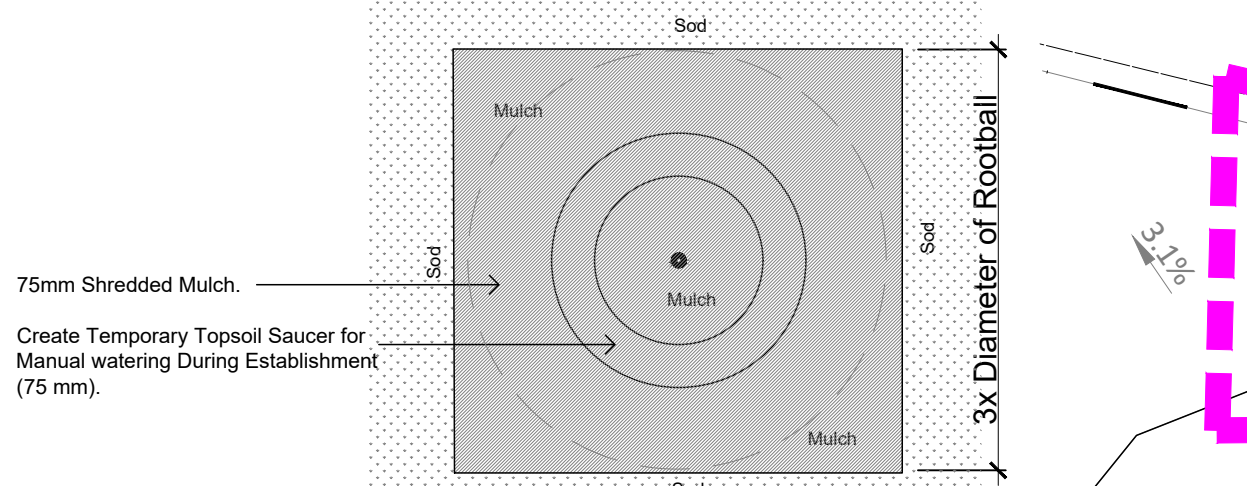


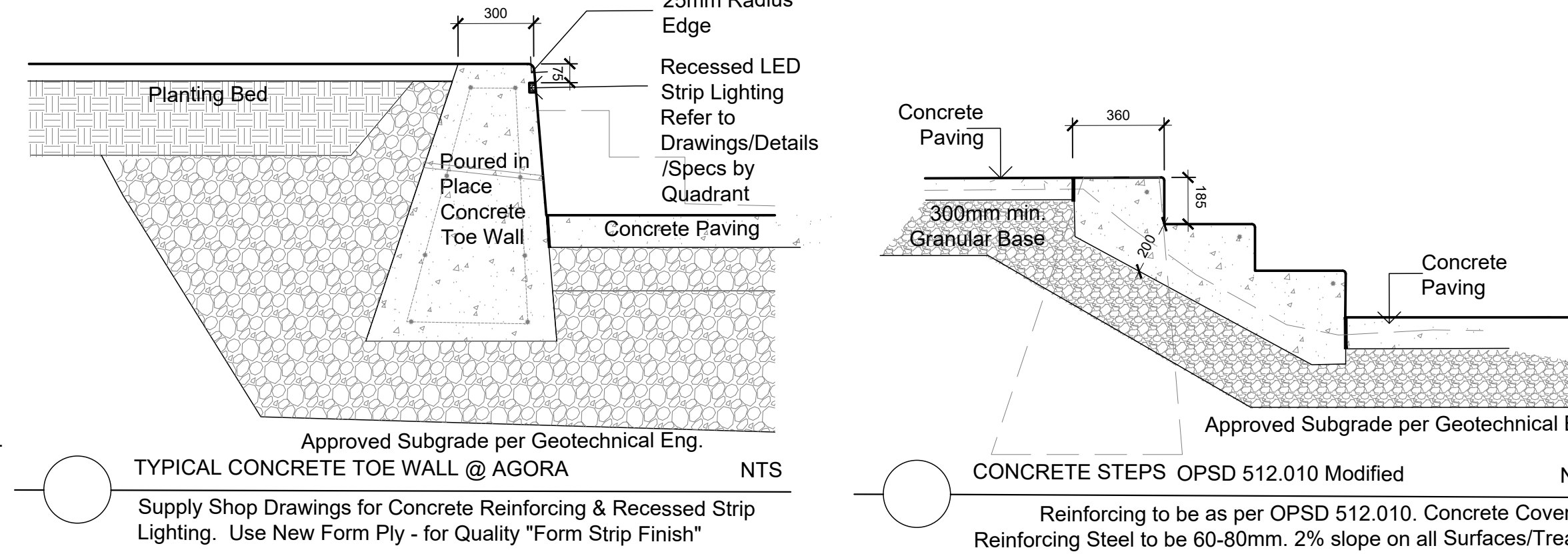
Code	Qty.	Botanical Name	Common Name	Size	Condition
AC	5	Amelanchier canadensis	Serviceberry	60mm cal	B + B specimen
AG	3	Aesculus glabra	Ohio Buckeye	50mm cal	B + B specimen
AR	5	Acer rubrum	Red Maple	70mm cal	B + B specimen
AS	3	Acer saccharum	Sugar Maple	60mm cal	B + B specimen
BP	1	Betula papyrifera	Paper Birch	60mm cal	B + B specimen
CO	3	Celtis occidentalis	Common Hackberry	60mm cal	B + B specimen
GB	3	Ginkgo biloba	Maidenhair Tree	70mm cal	B + B specimen
NH	3	Malus 'Harvest Gold'	Harvest Gold Crabapple	60mm cal	B + B specimen
QM	3	Quercus macrocarpa	Burr Oak	60mm cal	B + B specimen
QR	1	Quercus rubra	Red Oak	60mm cal	B + B specimen
AB	3	Abies balsamea	Balsam Fir	2.0m Ht.	B + B specimen
LL	3	Larix laricina	Eastern Larch / Tamarack	2.25m Ht.	B + B specimen
PG	7	Picea glauca	White Spruce	2.5m Ht.	B + B specimen
PS	3	Pinus strobus	White Pine	1.5m Ht.	B + B specimen

Code	Qty.	Botanical Name	Common Name	Size	Condition
ac	75	Amelanchier canadensis	Serviceberry	100cm Ht.	Pot
ca	50	Cornus alternifolia	Pagoda Dogwood	80cm Ht.	Pot
cr	65	Cornus racemosa	Grey Dogwood	100cm Ht.	Pot
HK	125	Hypericum kalmianum	St. John's Wort	40cm Ht.	Pot
HP	175	Hypericum prolificum	Shrubby St. John's Wort	40cm Ht.	Pot
sv	65	Syringa vulgaris alba	White Common Lilac	100cm Ht.	Pot
vi	80	Viburnum lentago	Nannyberry	100cm Ht.	Pot
VL	15	Viburnum lentago	Nannyberry	150cm Ht.	WB
SA	105	Spiraea alba	Meadowsweet	60cm Ht.	Pot
SB	150	Spiraea bumalda 'Dart's Red'	Dart's Red Spirea	50cm Ht.	Pot

Code	Qty.	Botanical Name	Common Name	Condition
	75	Calamagrostis acutiflora 'Overdam'	Feather Reed Grass	9cm Pot
	50	Imperata cylindrical 'Red Baron'	Japanese Blood Grass	9cm Pot
	75	Echinacea purpurea	Purple Coneflower	9cm Pot
	350	Geranium macrorrhizum	Bigroot Geranium	9cm Pot
	350	Geranium psilostemon 'Gerwat'	Rozanne Geranium	9cm Pot
	100	Parthenocissus quinquefolia	Virginia Creeper	9cm Pot
	75	Panicum virgatum	Switch Grass	9cm Pot
	75	Pinus mugo var. pumilio	Mugho Pine	30cm spr
	125	Arctostaphylos Uva Ursi	Bearberry	30cm spr
	75	Taxus cuspidata 'Monloo'	Emerald Spreader Yew	30cm spr

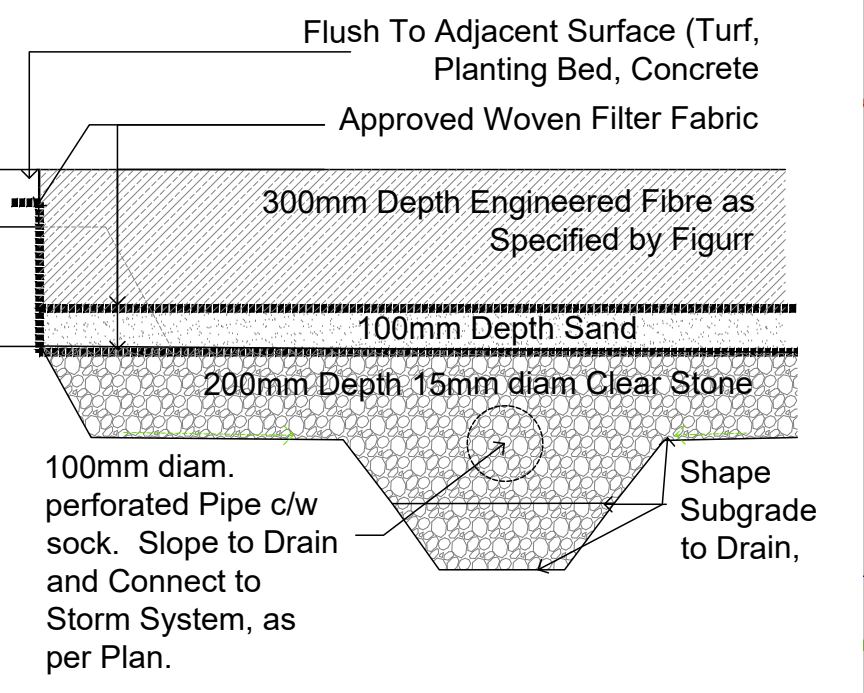


TYPICAL SECTION @ AGORA



The Landscape Plan is to be read in conjunction with the grading, servicing, site and survey plan | Bare root material to be planted in season only | All plant material locations to be staked on site by the landscape contractor and checked by the landscape architect prior to planting | All trees to be preserved on or directly adjacent to the site will be protected | Plant material are to be installed a minimum of 3.0m away from any part of any hydro transformer. 3.0m corridor between a fire hydrant and the curb, a 2.5m radius beside or behind a fire hydrant, 2.0m from any servicing/utility line or structure |

TYPICAL MULCH ACTIVITY AREA

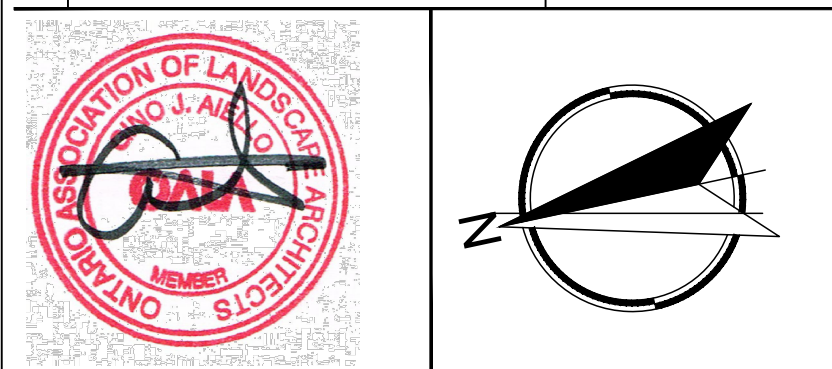


Drawing Remains the Property of/Copyright Reserved by Gino J. Aiello Landscape Architect. Do Not Use or Reproduce Without Approval of Gino J. Aiello. NOT To Be Used For Construction Unless indicated by Contractor. "FOR LANDSCAPE CONSTRUCTION". Revision is Responsible for Verification of Site Locations of all Utilities. Report any Discrepancies Between Site and Drawing Immediately to Gino J. Aiello. Do NOT Proceed Until Clarified.

LANDSCAPE PLAN LEGEND

- Proposed Coniferous Tree
- Proposed Deciduous Tree
- Existing Tree to Remain
- Existing Tree to be Removed
- Proposed Planting Bed
- Proposed Concrete
- OPTION 1: 85 Linear Metres Chain Link Fence 1.5m Ht Black Residential Grade c/w 2' 4' Gates.
- OPTION 2: 85 Linear Metres 1.5m Ht OASIS Series 5000/Iron Eagle 2110 c/w 2' 4' Gates.
- 115 Linear Metres c/w 3 Double Gates OASIS Series 4000 1.5m Ht. Black
- PS-76-101-TP- Circum Bike Rack by HAUSER Anchor to Concrete
- U/G Water Service
- U/G Storm Service
- U/G Sanitary Service
- O/H Hydro Service
- Catch Basin CB/Manhole
- Fire Hydrant

No.	Revision	Date
8	CANOPIES REMOVED	APRIL 25 2022
7	FOR TENDER	FEBRUARY 17 2022
6	FOR COORDINATION / REVIEW	FEBRUARY 1 2022
5	coordination for tender	january 1-31 2022
4	FIRST SUBMISSION SPC	JANUARY 11 2022
3	FOR REVIEW / COORDINATION	DECEMBER 20 2021
3	per Updated Site Plan	SEPTEMBER 21 2021
2	80% TENDER REVIEW	AUGUST 30 2021
1	FOR REVIEW / COORDINATION	AUGUST 25 2021



Property Owner: LYCÉE CLAUDEL
L'école française internationale d'Ottawa

Gino J. Aiello | landscape architect GJALA.com
GJA Inc. Gino@GJALA.com (613) 852 1343
110 Dabury Road Unit #1 Ottawa Ontario K1G 0C2

Project: LYCEE CLAUDEL Site Improvements
1633 Lycee Place Ottawa

Drawing: Landscape Plan

Date: JULY 2021
Scale: 1:300
City of Ottawa
Dwg - #####
Sheet Number: L1
D07-###