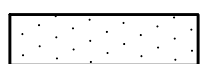

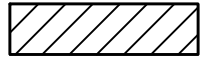
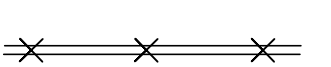

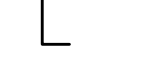

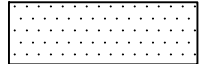
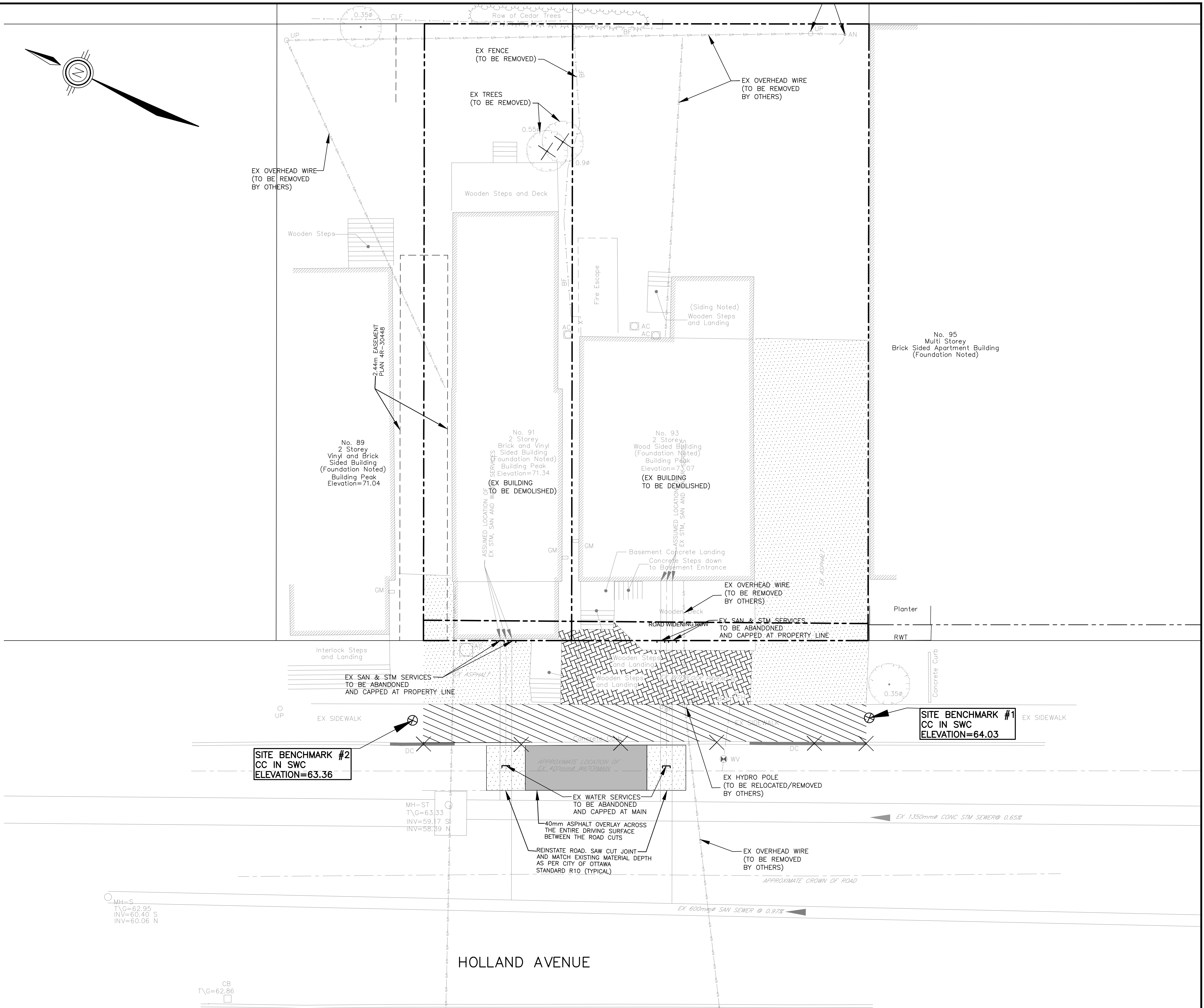


KEY MAP  
SCALE: N.T.S.

**REMOVALS**

-  ASPHALT REMOVAL (ROAD, DRIVEWAYS, PARKING AREAS)
-  INTERLOCK PAVER REMOVAL
-  CONCRETE SIDEWALK REMOVAL
-  REMOVE EXISTING CONCRETE CURB
-  REMOVE EXISTING TREE
-  CAP
-  40mm ASPHALT OVERLAY ACROSS THE ENTIRE DRIVING SURFACE BETWEEN THE ROAD CUTS
-  ROAD REINSTATEMENT PER R10



Mar 18, 2022 1: D:\DRAWINGS\21007-1 91-93 Holland Ave\Design\001-21007-REM1.dwg

**CONTRACT DRAWINGS:**  
Contractor must verify all dimensions and be responsible for same. Any discrepancies must be reported to the Engineer before commencing work. Drawings are not to be copied, distributed or used by others without the express written consent of Anley Graham & Associates Limited. Use of these drawings by any party for any other purpose is subject to the following caution.  
**CAUTION:** The information contained in this drawing is solely for the intended recipient. Any copying, distribution or use by others without the express written consent of Anley Graham & Associates Limited is prohibited. The recipient is responsible for confirming the accuracy and completeness of the information with the originator. The recipient assumes all risks and liabilities associated with the use of the drawings. The recipient will save and hold harmless Anley Graham & Associates Limited for any claims whatsoever associated with or related to the use of the drawings. The recipient will not reuse any portion of the drawings for any future project without the express written permission of Anley Graham & Associates Limited.

5	ISSUED FOR REVIEW/COORDINATION	MAR 18/22	JX	Not Valid Unless Signed And Dated
4	ISSUED FOR SPA	SEPT 24/21	JX	
3	REVISED PER NEW SITE PLAN	SEPT 20/21	JX	
2	REVISED PER NEW SITE PLAN	APR 21/21	JX	
1	ISSUED FOR REVIEW/COORDINATION	APR 08/21	JX	
NO.	REVISIONS	DATE	INITIAL	

SCALE: 1 : 100  
DESIGN: JX  
DRAWN: MH  
CHECKED: GSC/JX  
DATE: MARCH 2021

SIX-STORY MIXED USE APARTMENT BUILDING  
91-93 HOLLAND AVENUE  
CITY OF OTTAWA

EXISTING CONDITIONS/REMOVALS PLAN



2724 Fenton Road  
Ottawa, Ontario  
K1T 3T7  
Telephone: (613) 822-1052  
Fax: (613) 822-1573

CONTRACT No. 21007 001-21007-REM1

D07-12-21-0180