

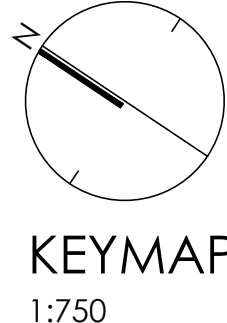
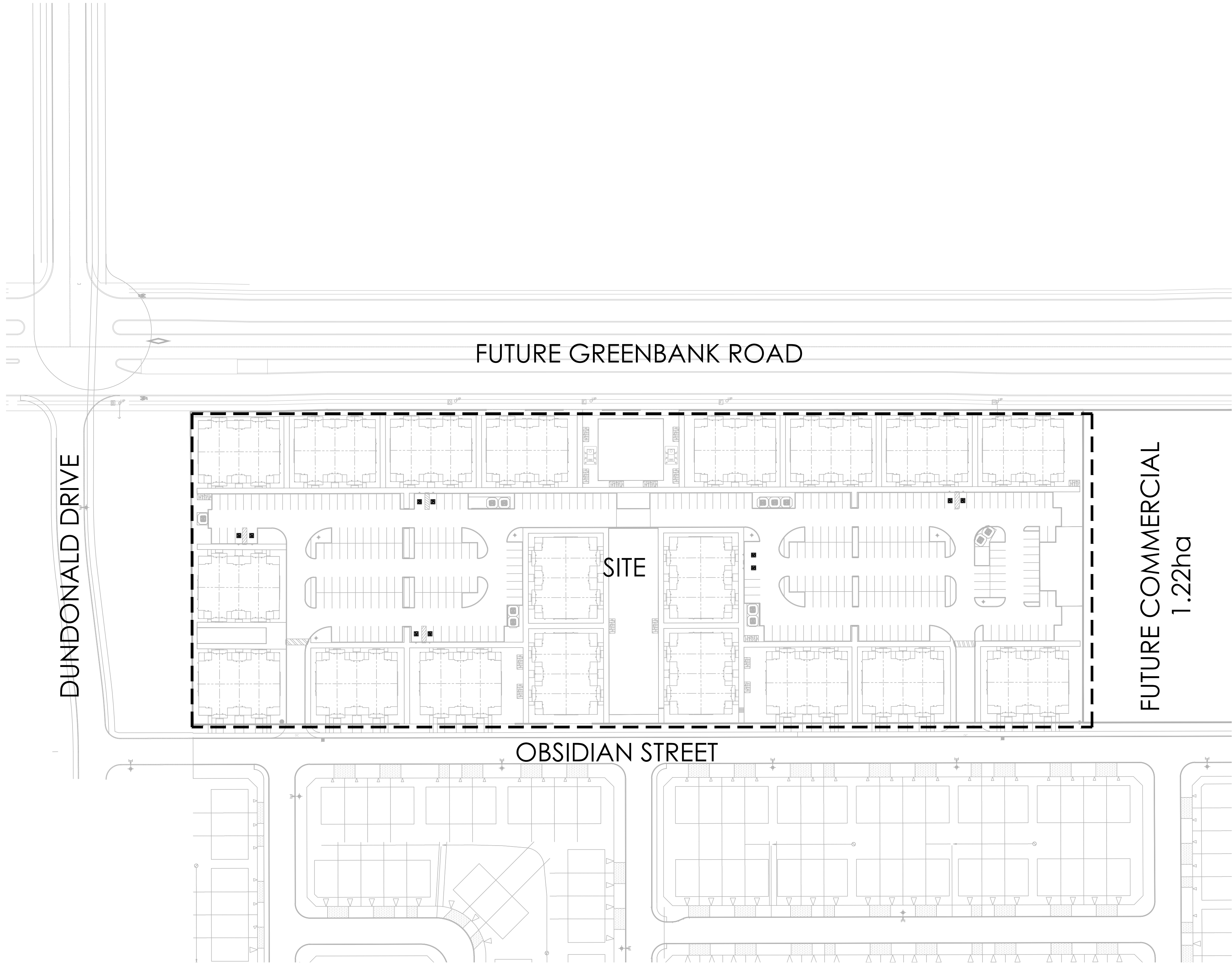


# HALF MOON BAY SOUTH PHASE 8

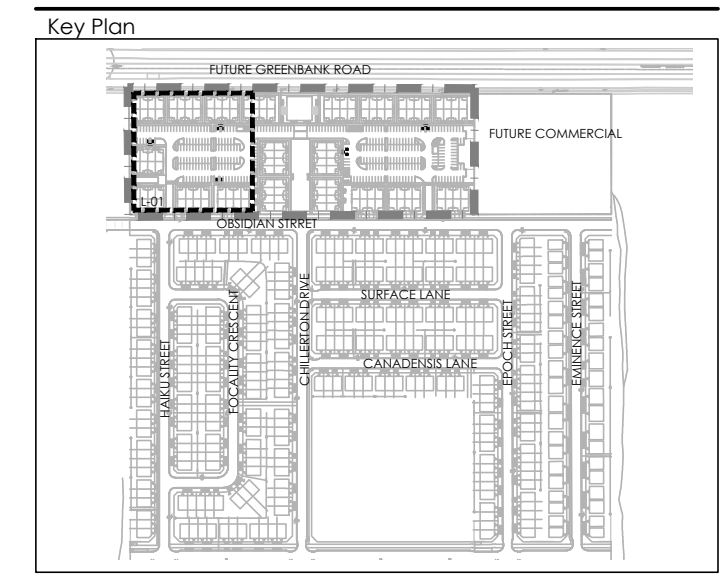


**LIST OF DRAWINGS:**

- L-01 - LANDSCAPE PLAN
- L-02 - LANDSCAPE PLAN
- L-03 - LANDSCAPE PLAN
- D-01 - DETAILS



Contractor shall check all dimensions on the work and report any discrepancy to the Landscape Architect before proceeding. All drawings and specifications are the property of the Landscape Architect and must be returned at the completion of the work. This drawing is not to be used for construction until signed by the Landscape Architect.



**LEGEND**

--- PROPERTY LINE

**FENCING**

--- WASTE ENCLOSURE FENCE

--- PEDESTRIAN ACCESS GATE

**PLANTING**

○ LARGE DECIDUOUS TREE

○ DECIDUOUS SHRUB

○ CONIFEROUS SHRUB

○ GRASSES/PERENNIALS

■ SODDING

**PAVING**

■ ASPHALT PAVING

■ CIP CONCRETE PAVING

■ HEAVY DUTY CONCRETE PAVING

■ RIVERSTONE PAVING

■ UNIT PAVING

**PLANTING KEY**

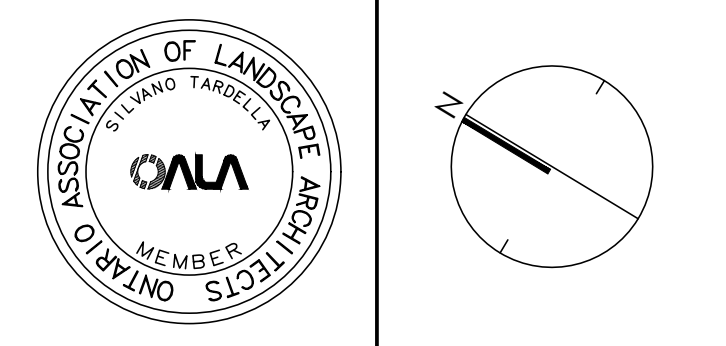
XX/00 TREE SPECIES QUANTITY

XX/00 SHRUB SPECIES QUANTITY

**DETAIL KEY**

D/1 DETAIL NO. SHEET NO.

| No. | Description                    | Date     |
|-----|--------------------------------|----------|
| 2   | Re-issued for First Submission | FEB 2022 |
| 1   | Issued for First Submission    | NOV 2021 |



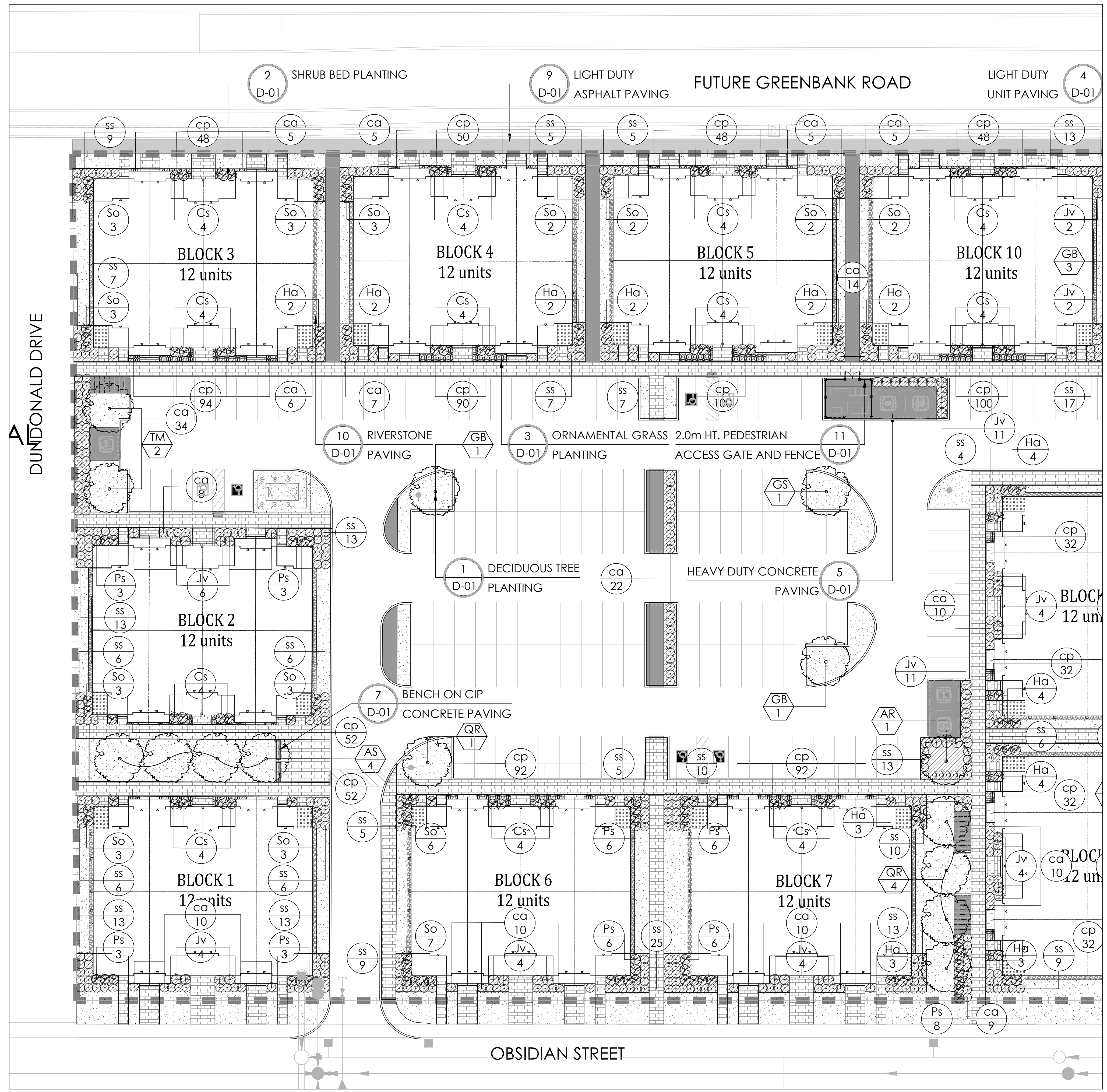
**NAK** design strategies

1285 WELLINGTON STREET WEST, OTTAWA, ON K1Y 3A8 CANADA  
 T 613.237.2345 F 613.237.6423 NAKDESIGNSTRATEGIES.COM

**HALF MOON BAY SOUTH PHASE 8**

Title: **LANDSCAPE PLAN**

Date: DEC 2021 Sheet: L-01  
 Scale: 1:250  
 Drawn: TY  
 Checked: TM  
 Job No.: 20-210



- GENERAL NOTES:**
- ACER RUBRUM, CELTIS OCCIDENTALIS, AND QUERCUS RUBRA TO BE SPRING DUG SPECIMENS AND PLANTED IN THE SPRING ONLY.
  - THE LOCATION OF THE TREES SHOWN ON THIS PLAN IS APPROXIMATE AND SHALL NOT BE SCALED FROM THIS DRAWING. THIS PLAN MUST BE READ IN CONJUNCTION WITH THE APPROVED CUP AND CITY CROSS SECTIONS.
  - CONTRACTOR SHALL ENSURE THAT ALL UTILITY LOCATIONS ARE OBTAINED PRIOR TO ANY EXCAVATION FOR LANDSCAPING.
  - LOCATION OF ALL PLANT MATERIALS TO BE STAKED BY THE CONTRACTOR AND VERIFIED IN THE FIELD BY LANDSCAPE ARCHITECT & CITY OF OTTAWA PRIOR TO THE EXCAVATION OF PITS.
  - ALL PLANT MATERIAL SHALL BE NURSERY GROWN STOCK UNLESS OTHERWISE NOTED.
  - TREES TO HAVE A MINIMUM 1800 CLEAR STEM ABOVE GRADE.
  - PLACE SOD ON A MINIMUM 150mm TOPSOIL.
  - CONTRACTOR TO MAKE GOOD ALL EXISTING AREAS DAMAGED BY HIS WORK TO THE SATISFACTION OF THE CITY OF OTTAWA.
  - THE CITY WILL BE NOTIFIED IF ANY TREES CANNOT BE LOCATED OR PLANTED DUE TO CONFLICTS WITH UTILITIES OR DRIVEWAYS. THE REQUIRED TREES NOT PLANTED ARE SUBJECT TO TREE BANKING. THE FINAL NUMBER OF TREES TO BE BANKED WILL BE PROVIDED TO THE CITY FOLLOWING ALL PLANTINGS.
  - ALL PLANT MATERIAL SHALL BE WARRANTED FOR TWO YEARS FROM THE DATE OF PERFORMANCE ACCEPTANCE AS DETERMINED BY THE CITY OF OTTAWA.
  - PERIODIC REVIEWS OF PLANTING SHALL BE CARRIED OUT BY THE LANDSCAPE ARCHITECT.
  - PLANTINGS TO BE STAKED FOR APPROVAL PRIOR TO CONSTRUCTION

- PLANTING NOTES:**
- CONTRACTOR TO VERIFY LOCATION OF ALL SERVICES PRIOR TO ANY EXCAVATION.
  - LOCATIONS OF ALL PLANT MATERIALS TO BE STAKED BY THE CONTRACTOR AND VERIFIED IN THE FIELD BY LANDSCAPE ARCHITECT PRIOR TO THE EXCAVATION OF PITS.
  - ALL PLANT MATERIAL SHALL BE NURSERY GROWN STOCK UNLESS OTHERWISE NOTED.
  - DECIDUOUS TREES TO HAVE A MINIMUM 1800 CLEAR STEM ABOVE GRADE.
  - ALL PLANT MATERIAL SHALL BE WARRANTED FOR TWO YEARS FROM THE DATE OF PERFORMANCE ACCEPTANCE AS DETERMINED BY THE LANDSCAPE ARCHITECT.
  - ALL STEEL T-BARS TO BE REMOVED AT THE ONE YEAR INTERIM INSPECTION UNLESS OTHERWISE DIRECTED BY THE LANDSCAPE ARCHITECT.
  - CONTRACTOR TO MAKE GOOD ALL EXISTING AREAS DAMAGED BY HIS WORK TO THE SATISFACTION OF THE LANDSCAPE ARCHITECT.
  - PERIODIC REVIEWS OF PLANTING SHALL BE CARRIED OUT BY THE LANDSCAPE ARCHITECT.
  - ANY PROPOSED SUBSTITUTIONS OF PLANT SPECIES SHALL BE MADE WITH PLANTS OF EQUIVALENT OVERALL FORM, HEIGHT, BRANCHING HABIT, FLOWER, LEAF, COLOR, FRUIT AND CULTURE AND ONLY AFTER APPROVAL OF THE LANDSCAPE ARCHITECT.

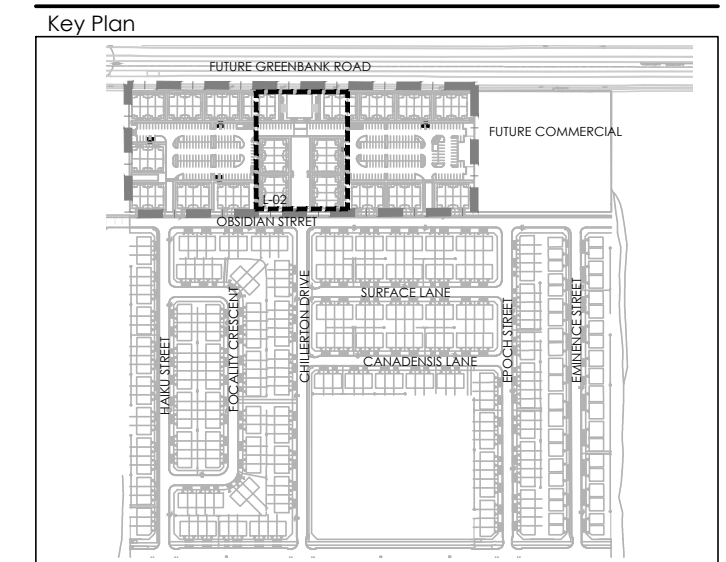
- SHRUB NOTES:**
- PLACE THE SHRUB AS UPRIGHT AS POSSIBLE, INCLUDING ON SLOPES.
  - PLANT SHRUBS AT THE PROPER DEPTH AS INDICATED ON THE DRAWINGS.
  - PACK THE SOIL WELL AROUND THE PLANT BASE TO REMOVE AIR POCKETS, BUT DO NOT COMPACT SOIL. PRESS SOIL GENTLY BUT FIRMLY TO PREVENT SHOCKING THE ROOTS.
  - PLACE SPECIES ACCORDING TO THE QUANTITIES AND SPACING AS INDICATED ON THE DRAWINGS.
  - PLANT SHRUBS AT THE PROPER DEPTH THE ROOT COLLARS SHOULD BE AT GROUND LEVEL.
  - MULCH THE SOIL SURFACE AS INDICATED ON DRAWINGS.
  - WATER PLANTS THOROUGHLY FOLLOWING PLANTING.
  - REFER TO SPECIFICATIONS FOR MAINTENANCE REQUIREMENTS.

- SOD NOTES:**
- SODDED AREAS SHALL HAVE A MINIMUM 150mm TOPSOIL.
  - FIRM THE SOIL BY GENTLY TAMPING OR ROLLING THE TOPSOIL. DO NOT COMPACT THE SOIL. EXCESSIVE FORCE WILL DESTROY THE SOIL STRUCTURE AND INHIBIT GERMINATION.
  - CUT THE GRASS TO 50mm WHENEVER IT REACHES THE HEIGHT OF 70mm. REMOVE CLIPPINGS THAT WILL SMOTHER GRASS.
  - SODDED AREAS WILL BE ACCEPTED BY THE PROJECT MANAGER FOLLOWING PERFORMANCE ACCEPTANCE, PROVIDED:
    - SEEDED AREAS ARE PROPERLY ESTABLISHED.
    - TURF IS FREE OF DEAD SPOTS AND WEEDS.
    - NO SURFACE SOIL IS VISIBLE WHEN GRASS HAS BEEN CUT TO A HEIGHT OF 50mm
    - TURF AREAS HAVE BEEN CUT NO LESS THAN TWICE. THE LAST CUT BEING CARRIED OUT WITHIN 24 HOURS PRIOR TO THE ACCEPTANCE INSPECTION.

**PLANT LIST A**

| KEY                           | QTY. | BOTANICAL NAME                             | COMMON NAME              | CAI/HT. | ROOT (mm) |
|-------------------------------|------|--|--------------------------|---------|-----------|
| <b>LARGE DECIDUOUS TREES</b>  |      |  |                          |         |           |
| AS                            | 12   | ACER SACCHARUM 'BONIFRE'                   | BONIFRE SUGAR MAPLE      | 50      | B&B       |
| AR                            | 11   | ACER RUBRUM                                | RED MAPLE                | 50      | B&B       |
| CO                            | 16   | CELTIS OCCIDENTALIS                        | HACKBERRY                | 50      | B&B       |
| GB                            | 17   | GINKGO BILOBA                              | GINKGO                   | 50      | B&B       |
| GS                            | 14   | GLEDITSIA TRACANTHOS VAR INERMIS           | HONEYLOCUST              | 50      | B&B       |
| QR                            | 11   | QUERCUS RUBRA                              | RED OAK                  | 50      | B&B       |
| <b>MEDIUM DECIDUOUS TREES</b> |      |  |                          |         |           |
| TM                            | 4    | TILIA MONGOLICA                            | MONGOLIAN LINDEN         | 50      | B&B       |
| <b>DECIDUOUS SHRUBS</b>       |      |  |                          |         |           |
| Cs                            | 94   | CORNUS SERICEA 'KELSEY'                    | KELSEY DOGWOOD           | 3 GAL.  |           |
| Hs                            | 103  | HYDRANGEA ARBORESCENS 'ANNABELLE'          | ANNABELLE HYDRANGEA      | 3 GAL.  |           |
| Ps                            | 71   | PHILADELPHUS X 'SNOWBELLE'                 | SNOWBELLE MOCKORANGE     | 3 GAL.  |           |
| So                            | 104  | SORBARIA SORBIFOLIA                        | FALSE SPIREA             | 3 GAL.  |           |
| <b>CONIFEROUS SHRUB</b>       |      |  |                          |         |           |
| Jv                            | 129  | JUNIPERUS VIRGINIANA 'BLUE ARROW'          | BLUE ARROW JUNIPER       | 3 GAL.  |           |
| <b>ORNAMENTAL GRASSES</b>     |      |  |                          |         |           |
| ca                            | 321  | CALAMAGROSTIS X ACUTIFLORA 'KARL FOERSTER' | KARL FOERSTER REED GRASS | 1 GAL.  |           |
| cp                            | 1988 | CAREX PENNSYLVANICA                        | OAK SEDGE                | 1 GAL.  |           |
| ss                            | 486  | SCHIZACHYRIUM SCOPARIUM                    | LITTLE BLUESTEM          | 1 GAL.  |           |
| <b>AMENITY AREA</b>           |      |  |                          |         |           |
| KEY                           | QTY. | BOTANICAL NAME                             | COMMON NAME              | CAI/HT. | ROOT (mm) |
| <b>DECIDUOUS SHRUBS</b>       |      |  |                          |         |           |
| Cs                            | 13   | CORNUS SERICEA 'KELSEY'                    | KELSEY DOGWOOD           | 3 GAL.  |           |
| Ps                            | 42   | PHILADELPHUS X 'SNOWBELLE'                 | SNOWBELLE MOCKORANGE     | 3 GAL.  |           |
| <b>CONIFEROUS SHRUB</b>       |      |  |                          |         |           |
| Jv                            | 34   | JUNIPERUS VIRGINIANA 'BLUE ARROW'          | BLUE ARROW JUNIPER       | 3 GAL.  |           |
| <b>ORNAMENTAL GRASSES</b>     |      |  |                          |         |           |
| ca                            | 157  | CALAMAGROSTIS X ACUTIFLORA 'KARL FOERSTER' | KARL FOERSTER REED GRASS | 1 GAL.  |           |
| ss                            | 61   | SCHIZACHYRIUM SCOPARIUM                    | LITTLE BLUESTEM          | 1 GAL.  |           |

Contractor shall check all dimensions on the work and report any discrepancy to the Landscape Architect before proceeding. All drawings and specifications are the property of the Landscape Architect and must be returned at the completion of the work. This drawing is not to be used for construction until signed by the Landscape Architect.



**LEGEND**

PROPERTY LINE

**FENCING**

- WASTE ENCLOSURE FENCE
- PEDESTRIAN ACCESS GATE

**PLANTING**

- LARGE DECIDUOUS TREE
- DECIDUOUS SHRUB
- CONIFEROUS SHRUB
- GRASSES/PERENNIALS
- SODDING

**PAVING**

- ASPHALT PAVING
- CIP CONCRETE PAVING
- HEAVY DUTY CONCRETE PAVING
- RIVERSTONE PAVING
- UNIT PAVING

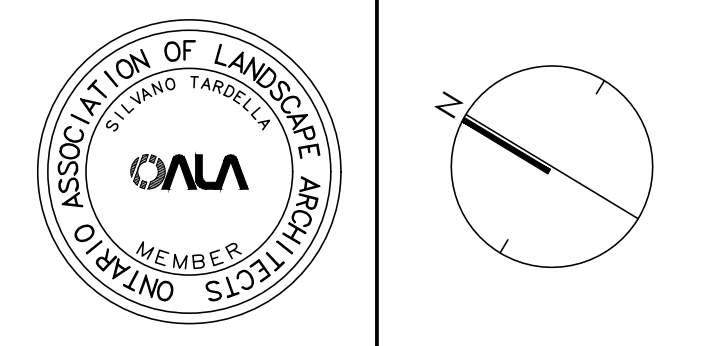
**PLANTING KEY**

- TREE SPECIES
- QUANTITY
- SHRUB SPECIES
- QUANTITY

**DETAIL KEY**

- DETAIL NO.
- SHEET NO.

|          |                                |          |
|----------|--------------------------------|----------|
| 2        | Re-issued for First Submission | FEB 2022 |
| 1        | Issued for First Submission    | NOV 2021 |
| No.      | Description                    | Date     |
| Revision |                                |          |



**NAK**  
design strategies

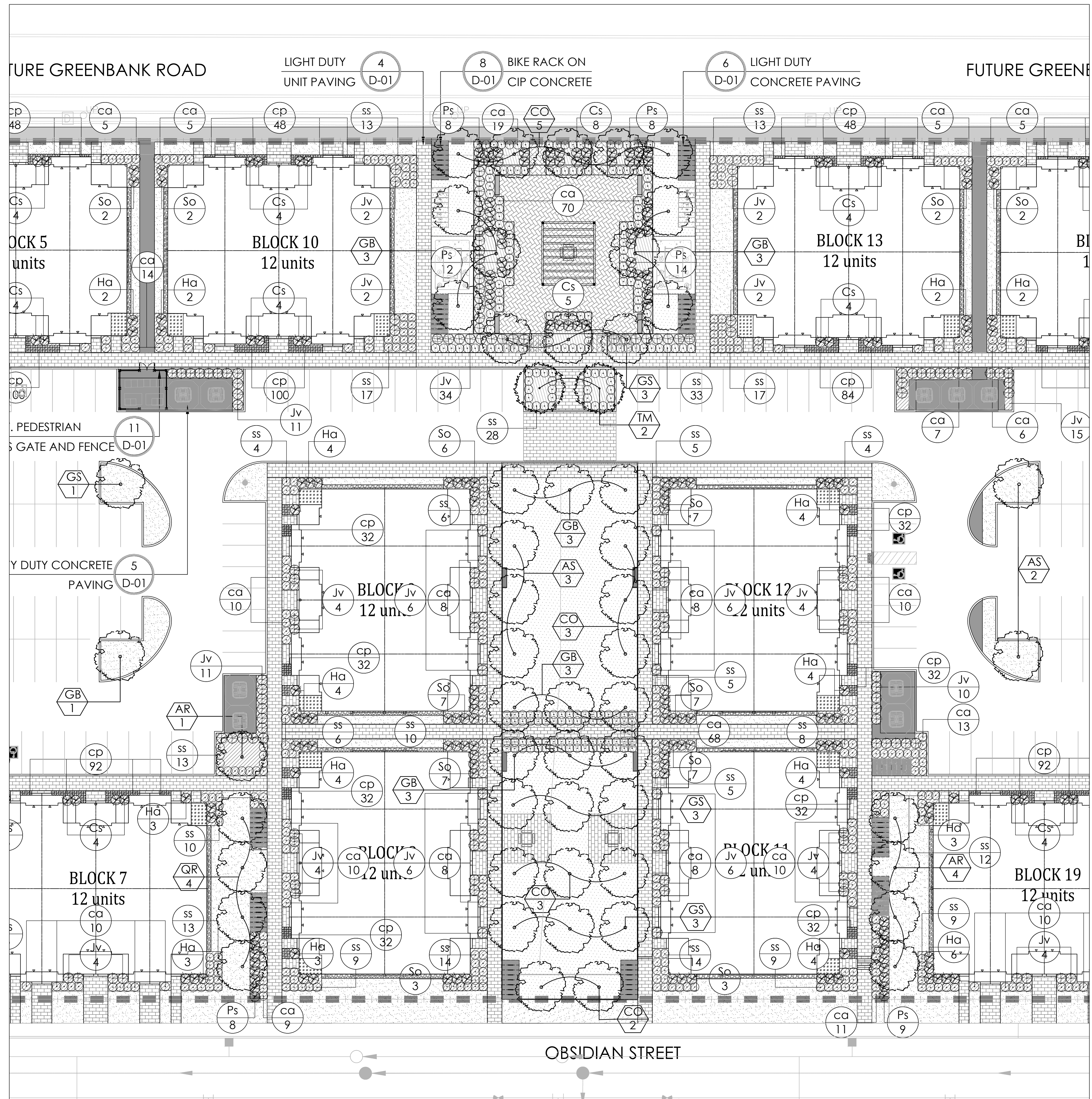
1285 WELLINGTON STREET WEST, OTTAWA, ON K1Y 3A8 CANADA  
T 613.237.2345 F 613.237.4423 NAKDESIGNSTRATEGIES.COM

**HALF MOON BAY SOUTH  
PHASE 8**

Title: **LANDSCAPE PLAN**

Date: DEC 2021  
Scale: 1:250  
Drawn: TY  
Checked: DM  
Job No.: 20-210

Sheet: **L-02**



- GENERAL NOTES:**
- ACER RUBRUM, CELTIS OCCIDENTALIS, AND QUERCUS RUBRA TO BE SPRING DUG SPECIMENS AND PLANTED IN THE SPRING ONLY.
  - THE LOCATION OF THE TREES SHOWN ON THIS PLAN IS APPROXIMATE AND SHALL NOT BE SCALED FROM THIS DRAWING. THIS PLAN MUST BE READ IN CONJUNCTION WITH THE APPROVED CUP AND CITY CROSS SECTIONS.
  - CONTRACTOR SHALL ENSURE THAT ALL UTILITY LOCATIONS ARE OBTAINED PRIOR TO ANY EXCAVATION FOR LANDSCAPING.
  - LOCATION OF ALL PLANT MATERIALS TO BE STAKED BY THE CONTRACTOR AND VERIFIED IN THE FIELD BY LANDSCAPE ARCHITECT & CITY OF OTTAWA PRIOR TO THE EXCAVATION OF PITS.
  - ALL PLANT MATERIAL SHALL BE NURSERY GROWN STOCK UNLESS OTHERWISE NOTED.
  - TREES TO HAVE A MINIMUM 1800 CLEAR STEM ABOVE GRADE.
  - PLACE SOD ON A MINIMUM 150mm TOPSOIL.
  - CONTRACTOR TO MAKE GOOD ALL EXISTING AREAS DAMAGED BY HIS WORK TO THE SATISFACTION OF THE CITY OF OTTAWA.
  - THE CITY WILL BE NOTIFIED IF ANY TREES CANNOT BE LOCATED OR PLANTED DUE TO CONFLICTS WITH UTILITIES OR DRIVEWAYS. THE REQUIRED TREES NOT PLANTED ARE SUBJECT TO TREE BANKING. THE FINAL NUMBER OF TREES TO BE BANKED WILL BE PROVIDED TO THE CITY FOLLOWING ALL PLANTINGS.
  - ALL PLANT MATERIAL SHALL BE WARRANTED FOR TWO YEARS FROM THE DATE OF PERFORMANCE ACCEPTANCE AS DETERMINED BY THE CITY OF OTTAWA.
  - PERIODIC REVIEWS OF PLANTING SHALL BE CARRIED OUT BY THE LANDSCAPE ARCHITECT.
  - PLANTINGS TO BE STAKED FOR APPROVAL PRIOR TO CONSTRUCTION.

- PLANTING NOTES:**
- CONTRACTOR TO VERIFY LOCATION OF ALL SERVICES PRIOR TO ANY EXCAVATION.
  - LOCATIONS OF ALL PLANT MATERIALS TO BE STAKED BY THE CONTRACTOR AND VERIFIED IN THE FIELD BY LANDSCAPE ARCHITECT PRIOR TO THE EXCAVATION OF PITS.
  - ALL PLANT MATERIAL SHALL BE NURSERY GROWN STOCK UNLESS OTHERWISE NOTED.
  - DECIDUOUS TREES TO HAVE A MINIMUM 1800 CLEAR STEM ABOVE GRADE.
  - ALL PLANT MATERIAL SHALL BE WARRANTED FOR TWO YEARS FROM THE DATE OF PERFORMANCE ACCEPTANCE AS DETERMINED BY THE LANDSCAPE ARCHITECT.
  - ALL STEEL T-BARS TO BE REMOVED AT THE ONE YEAR INTERIM INSPECTION UNLESS OTHERWISE DIRECTED BY THE LANDSCAPE ARCHITECT.
  - CONTRACTOR TO MAKE GOOD ALL EXISTING AREAS DAMAGED BY HIS WORK TO THE SATISFACTION OF THE LANDSCAPE ARCHITECT.
  - PERIODIC REVIEWS OF PLANTING SHALL BE CARRIED OUT BY THE LANDSCAPE ARCHITECT.
  - ANY PROPOSED SUBSTITUTIONS OF PLANT SPECIES SHALL BE MADE WITH PLANTS OF EQUIVALENT OVERALL FORM, HEIGHT, BRANCHING HABIT, FLOWER, LEAF, COLOR, FRUIT AND CULTURE AND ONLY AFTER APPROVAL OF THE LANDSCAPE ARCHITECT.

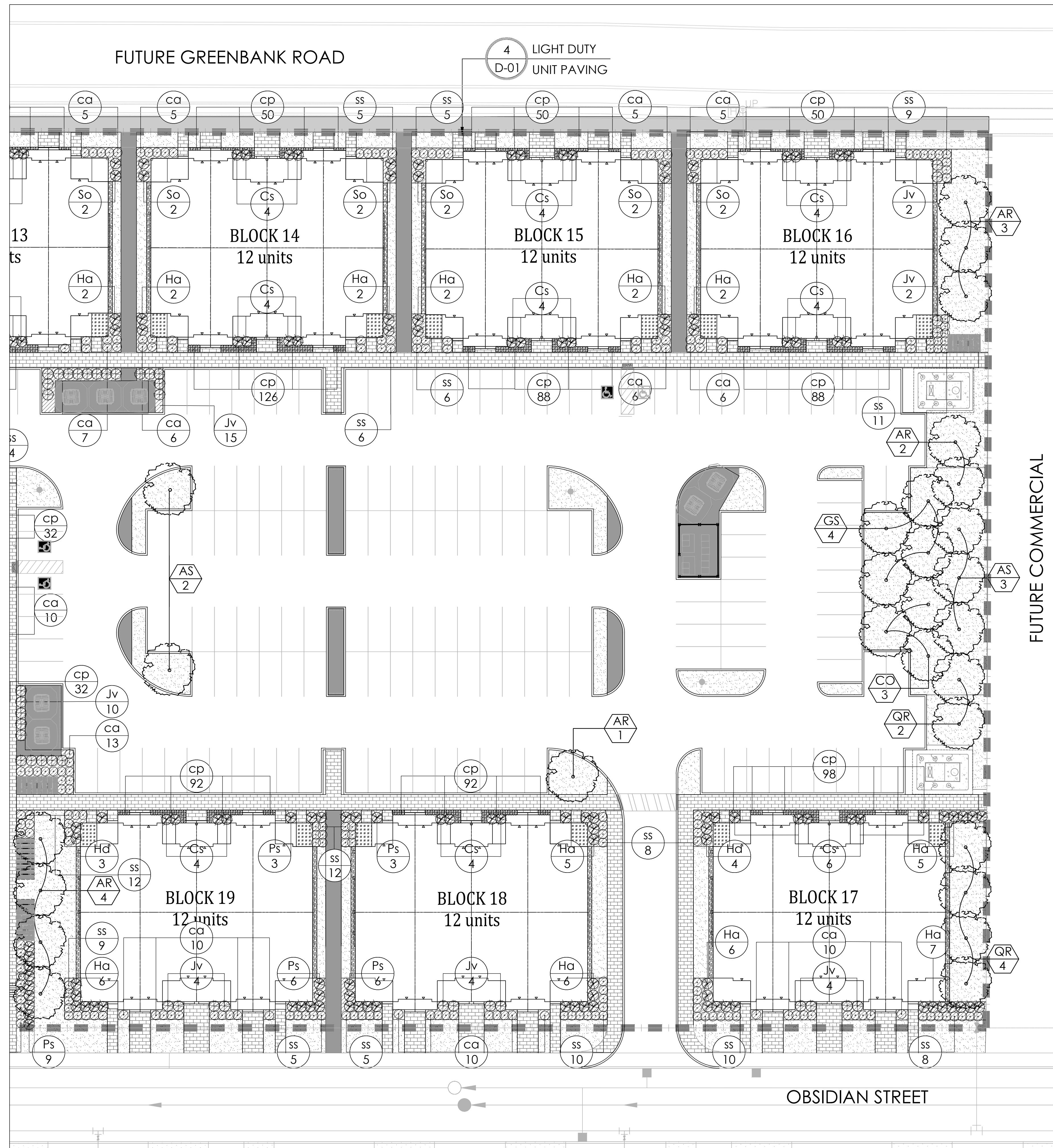
- SHRUB NOTES:**
- PLACE THE SHRUB AS UPRIGHT AS POSSIBLE, INCLUDING ON SLOPES.
  - PLANT SHRUBS AT THE PROPER DEPTH AS INDICATED ON THE DRAWINGS.
  - PACK THE SOIL WELL AROUND THE PLANT BASE TO REMOVE AIR POCKETS, BUT DO NOT COMPACT SOIL. PRESS SOIL GENTLY BUT FIRMLY TO PREVENT SHOCKING THE ROOTS.
  - PLACE SPECIES ACCORDING TO THE QUANTITIES AND SPACING AS INDICATED ON THE DRAWINGS.
  - PLANT SHRUBS AT THE PROPER DEPTH THE ROOT COLLARS SHOULD BE AT GROUND LEVEL.
  - MULCH THE SOIL SURFACE AS INDICATED ON DRAWINGS.
  - WATER PLANTS THOROUGHLY FOLLOWING PLANTING.
  - REFER TO SPECIFICATIONS FOR MAINTENANCE REQUIREMENTS.

- SOD NOTES:**
- SODDED AREAS SHALL HAVE A MINIMUM 150mm TOPSOIL.
  - FIRM THE SOIL BY GENTLY TAMPING OR ROLLING THE TOPSOIL. DO NOT COMPACT THE SOIL. EXCESSIVE FORCE WILL DESTROY THE SOIL STRUCTURE AND INHIBIT GERMINATION.
  - CUT THE GRASS TO 50mm WHENEVER IT REACHES THE HEIGHT OF 70mm. REMOVE CLIPPINGS THAT WILL SMOTHER GRASS.
  - SODDED AREAS WILL BE ACCEPTED BY THE PROJECT MANAGER FOLLOWING PERFORMANCE ACCEPTANCE, PROVIDED:
    - SEEDED AREAS ARE PROPERLY ESTABLISHED.
    - TURF IS FREE OF DEAD SPOTS AND WEEDS.
    - NO SURFACE SOIL IS VISIBLE WHEN GRASS HAS BEEN CUT TO A HEIGHT OF 50mm
    - TURF AREAS HAVE BEEN CUT NO LESS THAN TWICE, THE LAST CUT BEING CARRIED OUT WITHIN 24 HOURS PRIOR TO THE ACCEPTANCE INSPECTION.

**PLANT LIST A**

| KEY                           | QTY. | BOTANICAL NAME                             | COMMON NAME              | CAL/HT. | ROOT (mm) |
|-------------------------------|------|--|--------------------------|---------|-----------|
| <b>LARGE DECIDUOUS TREES</b>  |      |  |                          |         |           |
| AS                            | 12   | ACER SACCHARUM 'BONFIRE'                   | BONFIRE SUGAR MAPLE      | 50      | B&B       |
| AR                            | 11   | ACER RUBRUM                                | RED MAPLE                | 50      | B&B       |
| CO                            | 16   | CELTIS OCCIDENTALIS                        | HACKBERRY                | 50      | B&B       |
| GB                            | 17   | GINKGO BILOBA                              | GINKGO                   | 50      | B&B       |
| GS                            | 14   | GLEDISIA TRIACANTHOS VAR INERMIS           | HONEYLOCUST              | 50      | B&B       |
| QR                            | 11   | QUERCUS RUBRA                              | RED OAK                  | 50      | B&B       |
| <b>MEDIUM DECIDUOUS TREES</b> |      |  |                          |         |           |
| TM                            | 4    | TILIA MONGOLICA                            | MONGOLIAN LINDEN         | 50      | B&B       |
| <b>DECIDUOUS SHRUBS</b>       |      |  |                          |         |           |
| CS                            | 94   | CORNUS SERICEA 'KELSEY'                    | KELSEY DOGWOOD           | 3 GAL.  |           |
| Hd                            | 103  | HYDRANGEA ARBORESCENS 'ANNABELLE'          | ANNABELLE HYDRANGEA      | 3 GAL.  |           |
| Ps                            | 71   | PHILADELPHUS X 'SNOWBELLE'                 | SNOWBELLE MOCKORANGE     | 3 GAL.  |           |
| So                            | 104  | SORBARIA SORBIIFOLIA                       | FALSE SPIREA             | 3 GAL.  |           |
| <b>CONIFEROUS SHRUB</b>       |      |  |                          |         |           |
| Jv                            | 129  | JUNIPERUS VIRGINIANA 'BLUE ARROW'          | BLUE ARROW JUNIPER       | 3 GAL.  |           |
| <b>ORNAMENTAL GRASSES</b>     |      |  |                          |         |           |
| ca                            | 321  | CALAMAGROSTIS X ACUTIFLORA 'KARL FOERSTER' | KARL FOERSTER REED GRASS | 1 GAL.  |           |
| cp                            | 1988 | CAREX PENSYLVANICA                         | OAK SEDGE                | 1 GAL.  |           |
| ss                            | 486  | SCHIZACHYRIUM SCOPARIUM                    | LITTLE BLUESTEM          | 1 GAL.  |           |
| <b>AMENITY AREA</b>           |      |  |                          |         |           |
| KEY                           | QTY. | BOTANICAL NAME                             | COMMON NAME              | CAL/HT. | ROOT (mm) |
| <b>DECIDUOUS SHRUBS</b>       |      |  |                          |         |           |
| CS                            | 13   | CORNUS SERICEA 'KELSEY'                    | KELSEY DOGWOOD           | 3 GAL.  |           |
| Ps                            | 42   | PHILADELPHUS X 'SNOWBELLE'                 | SNOWBELLE MOCKORANGE     | 3 GAL.  |           |
| <b>CONIFEROUS SHRUB</b>       |      |  |                          |         |           |
| Jv                            | 34   | JUNIPERUS VIRGINIANA 'BLUE ARROW'          | BLUE ARROW JUNIPER       | 3 GAL.  |           |
| <b>ORNAMENTAL GRASSES</b>     |      |  |                          |         |           |
| ca                            | 157  | CALAMAGROSTIS X ACUTIFLORA 'KARL FOERSTER' | KARL FOERSTER REED GRASS | 1 GAL.  |           |
| ss                            | 61   | SCHIZACHYRIUM SCOPARIUM                    | LITTLE BLUESTEM          | 1 GAL.  |           |

Contractor shall check all dimensions on the work and report any discrepancy to the Landscape Architect before proceeding. All drawings and specifications are the property of the Landscape Architect and must be returned at the completion of the work. This drawing is not to be used for construction until signed by the Landscape Architect.



- GENERAL NOTES:**
- ACER RUBRUM, CELTIS OCCIDENTALIS, AND QUERCUS RUBRA TO BE SPRING DUG SPECIMENS AND PLANTED IN THE SPRING ONLY.
  - THE LOCATION OF THE TREES SHOWN ON THIS PLAN IS APPROXIMATE AND SHALL NOT BE SCALED FROM THIS DRAWING. THIS PLAN MUST BE READ IN CONJUNCTION WITH THE APPROVED CUP AND CITY CROSS SECTIONS.
  - CONTRACTOR SHALL ENSURE THAT ALL UTILITY LOCATIONS ARE OBTAINED PRIOR TO ANY EXCAVATION FOR LANDSCAPING.
  - LOCATION OF ALL PLANT MATERIALS TO BE STAKED BY THE CONTRACTOR AND VERIFIED IN THE FIELD BY LANDSCAPE ARCHITECT & CITY OF OTTAWA PRIOR TO THE EXCAVATION OF PITS.
  - ALL PLANT MATERIAL SHALL BE NURSERY GROWN STOCK UNLESS OTHERWISE NOTED.
  - TREES TO HAVE A MINIMUM 1800 CLEAR STEM ABOVE GRADE.
  - PLACE SOD ON A MINIMUM 150mm TOPSOIL.
  - CONTRACTOR TO MAKE GOOD ALL EXISTING AREAS DAMAGED BY HIS WORK TO THE SATISFACTION OF THE CITY OF OTTAWA.
  - THE CITY WILL BE NOTIFIED IF ANY TREES CANNOT BE LOCATED OR PLANTED DUE TO CONFLICTS WITH UTILITIES OR DRIVEWAYS. THE REQUIRED TREES NOT PLANTED ARE SUBJECT TO TREE BANKING. THE FINAL NUMBER OF TREES TO BE BANKED WILL BE PROVIDED TO THE CITY FOLLOWING ALL PLANTINGS.
  - ALL PLANT MATERIAL SHALL BE WARRANTED FOR TWO YEARS FROM THE DATE OF PERFORMANCE ACCEPTANCE AS DETERMINED BY THE CITY OF OTTAWA.
  - PERIODIC REVIEWS OF PLANTING SHALL BE CARRIED OUT BY THE LANDSCAPE ARCHITECT.
  - PLANTINGS TO BE STAKED FOR APPROVAL PRIOR TO CONSTRUCTION.

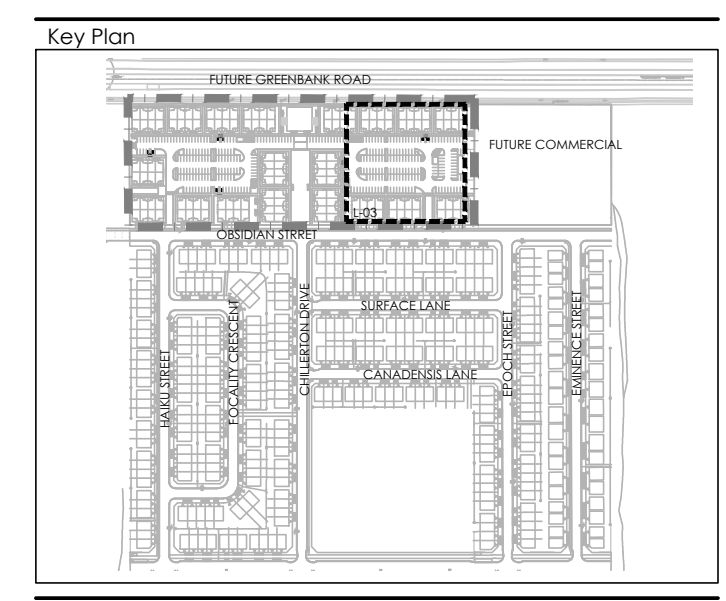
- PLANTING NOTES:**
- CONTRACTOR TO VERIFY LOCATION OF ALL SERVICES PRIOR TO ANY EXCAVATION.
  - LOCATIONS OF ALL PLANT MATERIALS TO BE STAKED BY THE CONTRACTOR AND VERIFIED IN THE FIELD BY LANDSCAPE ARCHITECT PRIOR TO THE EXCAVATION OF PITS.
  - ALL PLANT MATERIAL SHALL BE NURSERY GROWN STOCK UNLESS OTHERWISE NOTED.
  - DECIDUOUS TREES TO HAVE A MINIMUM 1800 CLEAR STEM ABOVE GRADE.
  - ALL PLANT MATERIAL SHALL BE WARRANTED FOR TWO YEARS FROM THE DATE OF PERFORMANCE ACCEPTANCE AS DETERMINED BY THE LANDSCAPE ARCHITECT.
  - ALL STEEL T-BARS TO BE REMOVED AT THE ONE YEAR INTERIM INSPECTION UNLESS OTHERWISE DIRECTED BY THE LANDSCAPE ARCHITECT.
  - CONTRACTOR TO MAKE GOOD ALL EXISTING AREAS DAMAGED BY HIS WORK TO THE SATISFACTION OF THE LANDSCAPE ARCHITECT.
  - PERIODIC REVIEWS OF PLANTING SHALL BE CARRIED OUT BY THE LANDSCAPE ARCHITECT.
  - ANY PROPOSED SUBSTITUTIONS OF PLANT SPECIES SHALL BE MADE WITH PLANTS OF EQUIVALENT OVERALL FORM, HEIGHT, BRANCHING HABIT, FLOWER, LEAF, COLOR, FRUIT AND CULTURE AND ONLY AFTER APPROVAL OF THE LANDSCAPE ARCHITECT.

- SHRUB NOTES:**
- PLACE THE SHRUB AS UPRIGHT AS POSSIBLE, INCLUDING ON SLOPES.
  - PLANT SHRUBS AT THE PROPER DEPTH AS INDICATED ON THE DRAWINGS.
  - PACK THE SOIL WELL AROUND THE PLANT BASE TO REMOVE AIR POCKETS, BUT DO NOT COMPACT SOIL. PRESS SOIL GENTLY BUT FIRMLY TO PREVENT SHOCKING THE ROOTS.
  - PLACE SPECIES ACCORDING TO THE QUANTITIES AND SPACING AS INDICATED ON THE DRAWINGS.
  - PLANT SHRUBS AT THE PROPER DEPTH THE ROOT COLLARS SHOULD BE AT GROUND LEVEL.
  - MULCH THE SOIL SURFACE AS INDICATED ON DRAWINGS.
  - WATER PLANTS THOROUGHLY FOLLOWING PLANTING.
  - REFER TO SPECIFICATIONS FOR MAINTENANCE REQUIREMENTS.

- SOD NOTES:**
- SODDED AREAS SHALL HAVE A MINIMUM 150mm TOPSOIL.
  - FIRM THE SOIL BY GENTLY TAMPING OR ROLLING THE TOPSOIL. DO NOT COMPACT THE SOIL. EXCESSIVE FORCE WILL DESTROY THE SOIL STRUCTURE AND INHIBIT GERMINATION.
  - CUT THE GRASS TO 50mm WHENEVER IT REACHES THE HEIGHT OF 70mm. REMOVE CLIPPINGS THAT WILL SMOOTH GRASS.
  - SODDED AREAS WILL BE ACCEPTED BY THE PROJECT MANAGER FOLLOWING PERFORMANCE ACCEPTANCE, PROVIDED:
    - SEEDING AREAS ARE PROPERLY ESTABLISHED.
    - TURF IS FREE OF DEAD SPOTS AND WEEDS.
    - NO SURFACE SOIL IS VISIBLE WHEN GRASS HAS BEEN CUT TO A HEIGHT OF 50mm.
    - TURF AREAS HAVE BEEN CUT NO LESS THAN TWICE, THE LAST CUT BEING CARRIED OUT WITHIN 24 HOURS PRIOR TO THE ACCEPTANCE INSPECTION.

**PLANT LIST A**

| KEY                           | QTY. | BOTANICAL NAME                             | COMMON NAME              | CAL/HT. | ROOT (mm) |
|-------------------------------|------|--|--------------------------|---------|-----------|
| <b>LARGE DECIDUOUS TREES</b>  |      |  |                          |         |           |
| AS                            | 12   | ACER SACCHARUM 'BONAFIRE'                  | BONAFIRE SUGAR MAPLE     | 50      | B&B       |
| AR                            | 11   | ACER RUBRUM                                | RED MAPLE                | 50      | B&B       |
| CO                            | 16   | CELTIS OCCIDENTALIS                        | HACKBERRY                | 50      | B&B       |
| GB                            | 17   | GINKGO BILOBA                              | GINKGO                   | 50      | B&B       |
| GS                            | 14   | GLEDITSIA TRIACANTHOS VAR INERMIS          | HONEYLOCUST              | 50      | B&B       |
| QR                            | 11   | QUERCUS RUBRA                              | RED OAK                  | 50      | B&B       |
| <b>MEDIUM DECIDUOUS TREES</b> |      |  |                          |         |           |
| TM                            | 4    | TILIA MONGOLICA                            | MONGOLIAN LINDEN         | 50      | B&B       |
| <b>DECIDUOUS SHRUBS</b>       |      |  |                          |         |           |
| CS                            | 94   | CORNUS SERICEA 'KELSEY'                    | KELSEYI DOGWOOD          | 3 GAL.  |           |
| Hg                            | 103  | HYDRANGEA ARBORESCENS 'ANNABELLE'          | ANNABELLE HYDRANGEA      | 3 GAL.  |           |
| Ps                            | 71   | PHILADELPHUS X 'SNOWBELLE'                 | SNOWBELLE MOCKORANGE     | 3 GAL.  |           |
| So                            | 104  | SORBARIA SORBIFOLIA                        | FALSE SPIREA             | 3 GAL.  |           |
| <b>CONIFEROUS SHRUB</b>       |      |  |                          |         |           |
| Jv                            | 129  | JUNIPERUS VIRGINIANA 'BLUE ARROW'          | BLUE ARROW JUNIPER       | 3 GAL.  |           |
| <b>ORNAMENTAL GRASSES</b>     |      |  |                          |         |           |
| ca                            | 321  | CALAMAGROSTIS X ACUTIFLORA 'KARL FOERSTER' | KARL FOERSTER REED GRASS | 1 GAL.  |           |
| cp                            | 1988 | CAREX PENSYLVANICA                         | OAK SEDGE                | 1 GAL.  |           |
| ss                            | 486  | SCHIZACHYRIUM SCOPARIUM                    | LITTLE BLUESTEM          | 1 GAL.  |           |
| <b>AMENITY AREA</b>           |      |  |                          |         |           |
| KEY                           | QTY. | BOTANICAL NAME                             | COMMON NAME              | CAL/HT. | ROOT (mm) |
| <b>DECIDUOUS SHRUBS</b>       |      |  |                          |         |           |
| CS                            | 13   | CORNUS SERICEA 'KELSEY'                    | KELSEYI DOGWOOD          | 3 GAL.  |           |
| Ps                            | 42   | PHILADELPHUS X 'SNOWBELLE'                 | SNOWBELLE MOCKORANGE     | 3 GAL.  |           |
| <b>CONIFEROUS SHRUB</b>       |      |  |                          |         |           |
| Jv                            | 34   | JUNIPERUS VIRGINIANA 'BLUE ARROW'          | BLUE ARROW JUNIPER       | 3 GAL.  |           |
| <b>ORNAMENTAL GRASSES</b>     |      |  |                          |         |           |
| ca                            | 157  | CALAMAGROSTIS X ACUTIFLORA 'KARL FOERSTER' | KARL FOERSTER REED GRASS | 1 GAL.  |           |
| ss                            | 61   | SCHIZACHYRIUM SCOPARIUM                    | LITTLE BLUESTEM          | 1 GAL.  |           |



**LEGEND**

PROPERTY LINE

**FENCING**

- WASTE ENCLOSURE FENCE
- PEDESTRIAN ACCESS GATE

**PLANTING**

- LARGE DECIDUOUS TREE
- DECIDUOUS SHRUB
- CONIFEROUS SHRUB
- GRASSES/PERENNIALS
- SODDING

**PAVING**

- ASPHALT PAVING
- CIP CONCRETE PAVING
- HEAVY DUTY CONCRETE PAVING
- RIVERSTONE PAVING
- UNIT PAVING

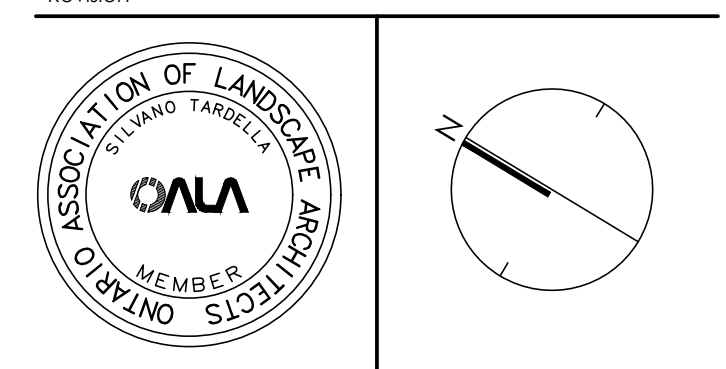
**PLANTING KEY**

- TREE SPECIES QUANTITY
- SHRUB SPECIES QUANTITY

**DETAIL KEY**

- DETAIL NO.
- SHEET NO.

| No. | Description                    | Date     |
|-----|--------------------------------|----------|
| 2   | Re-issued for First Submission | FEB 2022 |
| 1   | Issued for First Submission    | NOV 2021 |
|     | Revision                       |          |



**NAK**  
design strategies

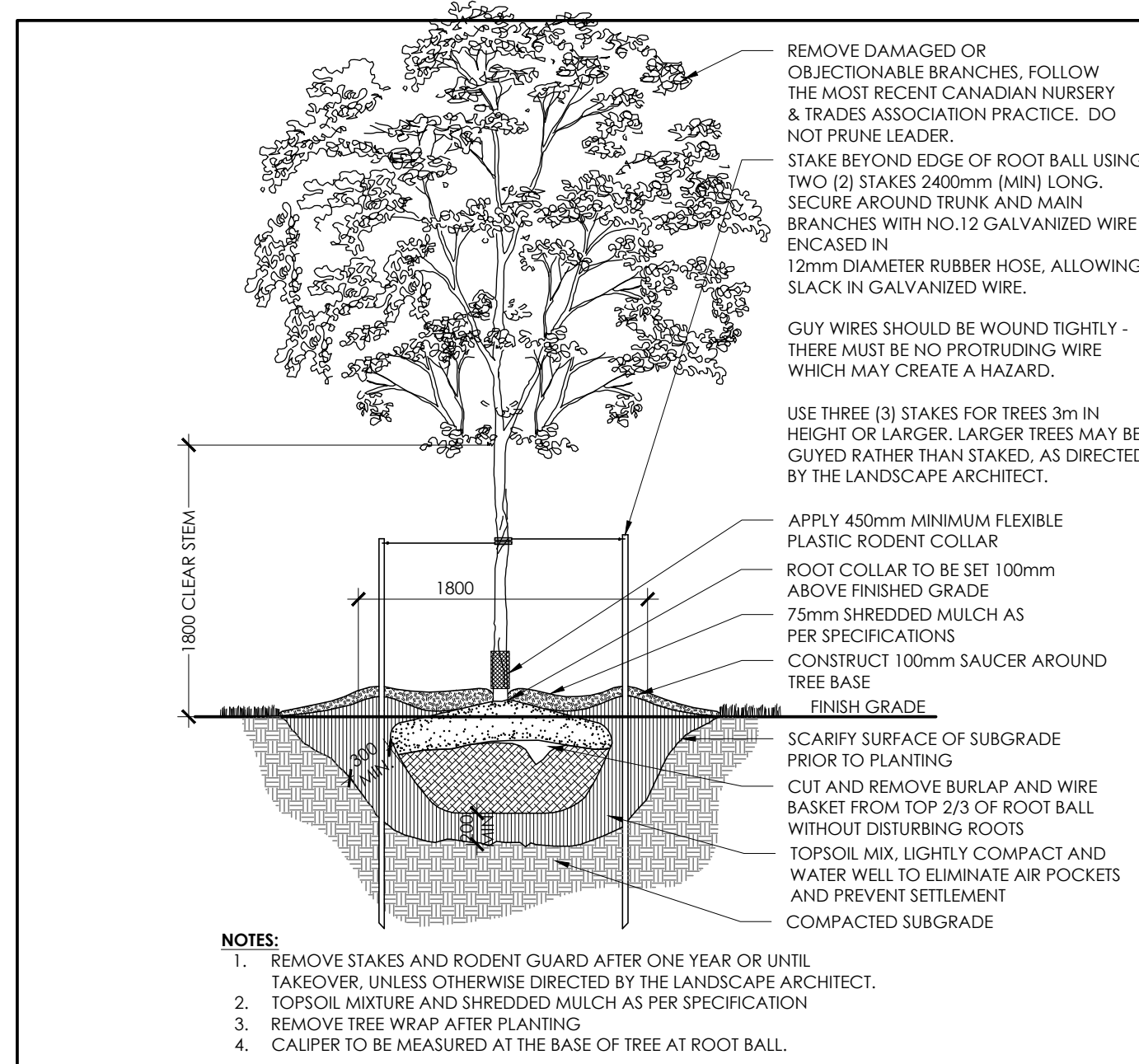
1285 WELLINGTON STREET WEST, OTTAWA, ON K1Y 3A8 CANADA  
T 613.237.2345 F 613.237.6223 NAKDESIGNSTRATEGIES.COM

HALF MOON BAY SOUTH  
PHASE 8

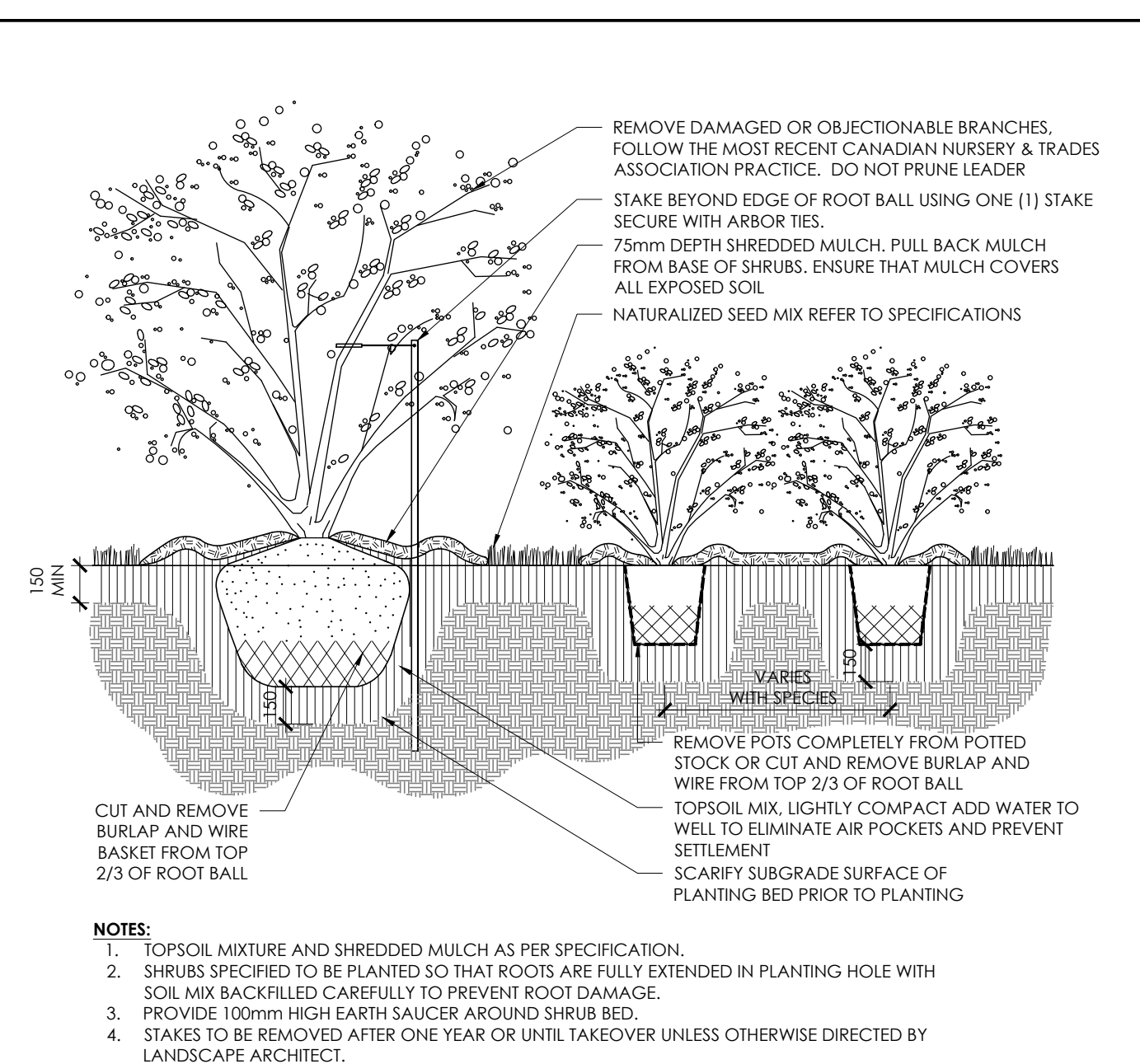
Title  
LANDSCAPE PLAN

Date DEC 2021 Sheet  
Scale 1:250  
Drawn TY  
CheckedDTM  
Job No. 20-210

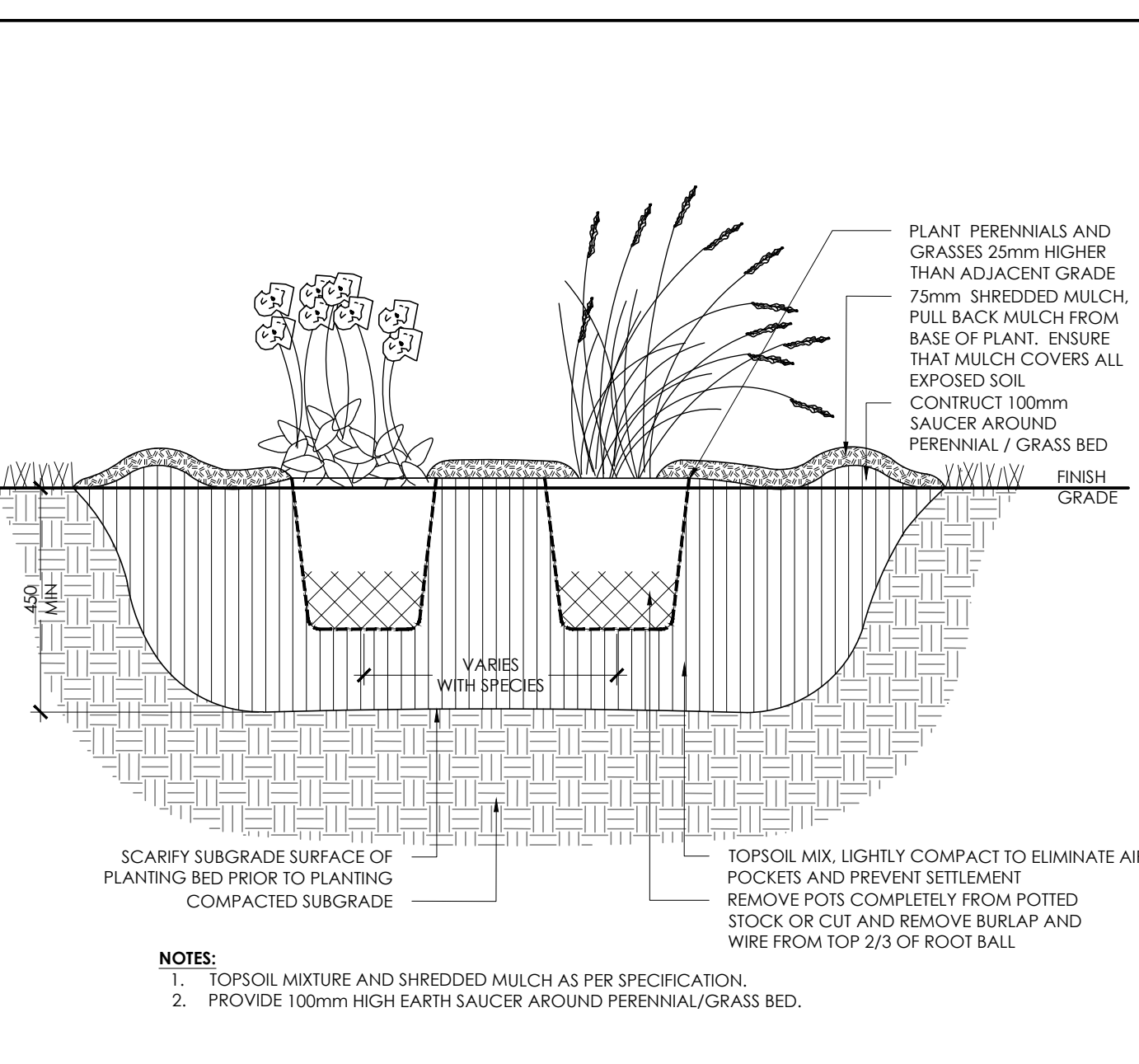
**L-03**



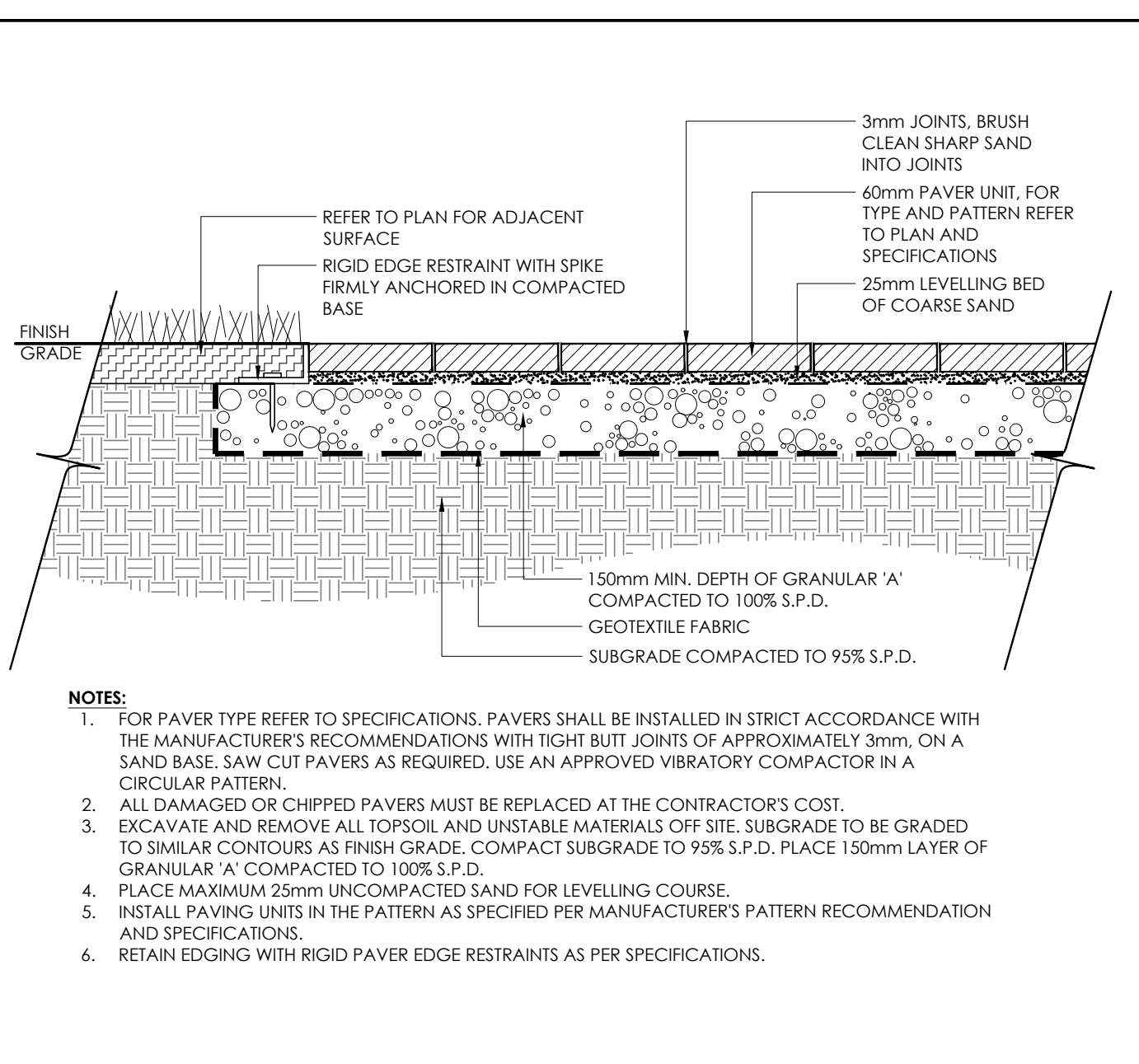
1 DECIDUOUS TREE PLANTING  
N.T.S.



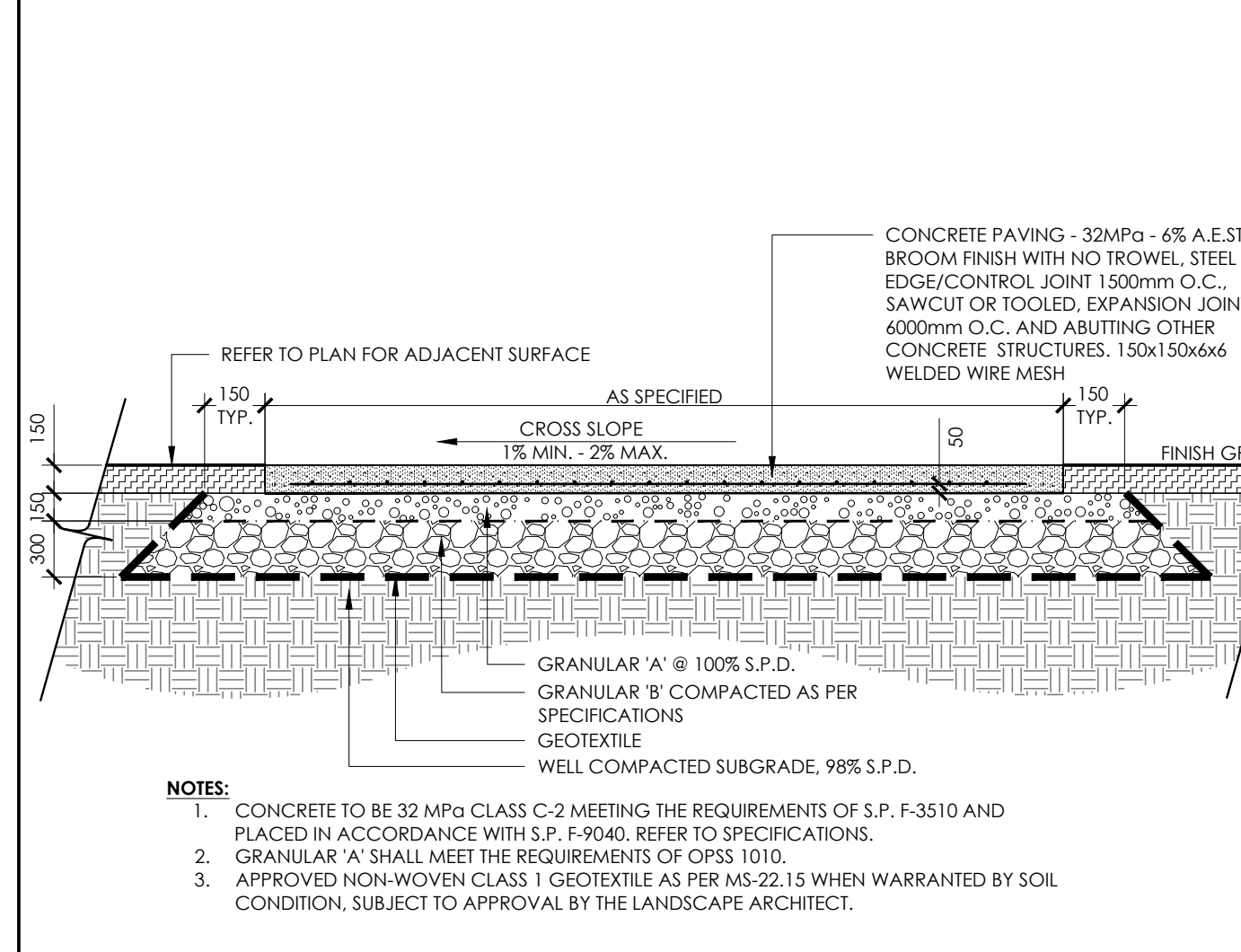
2 SHRUB BED PLANTING  
N.T.S.



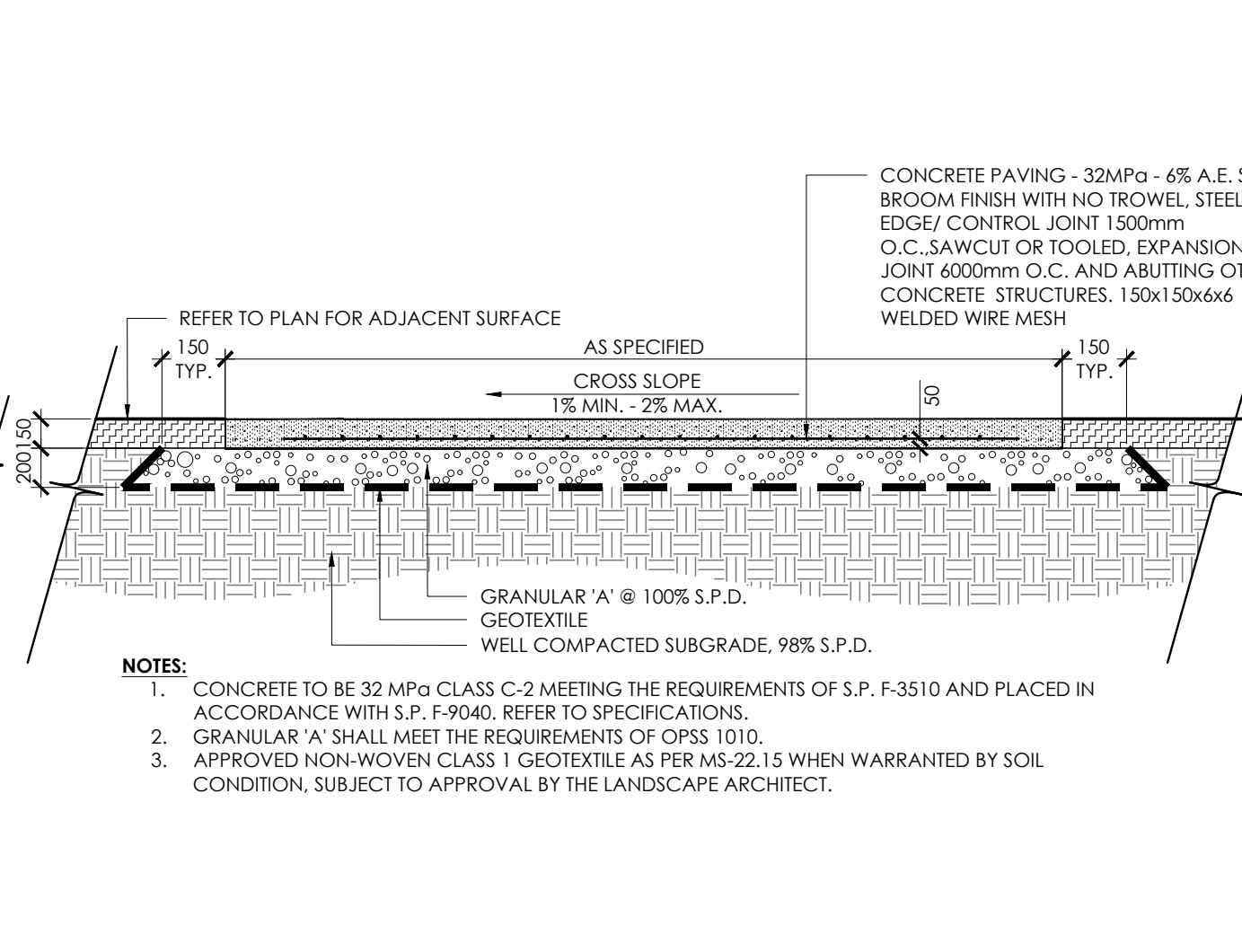
3 PERENNIAL AND ORNAMENTAL GRASS PLANTING  
N.T.S.



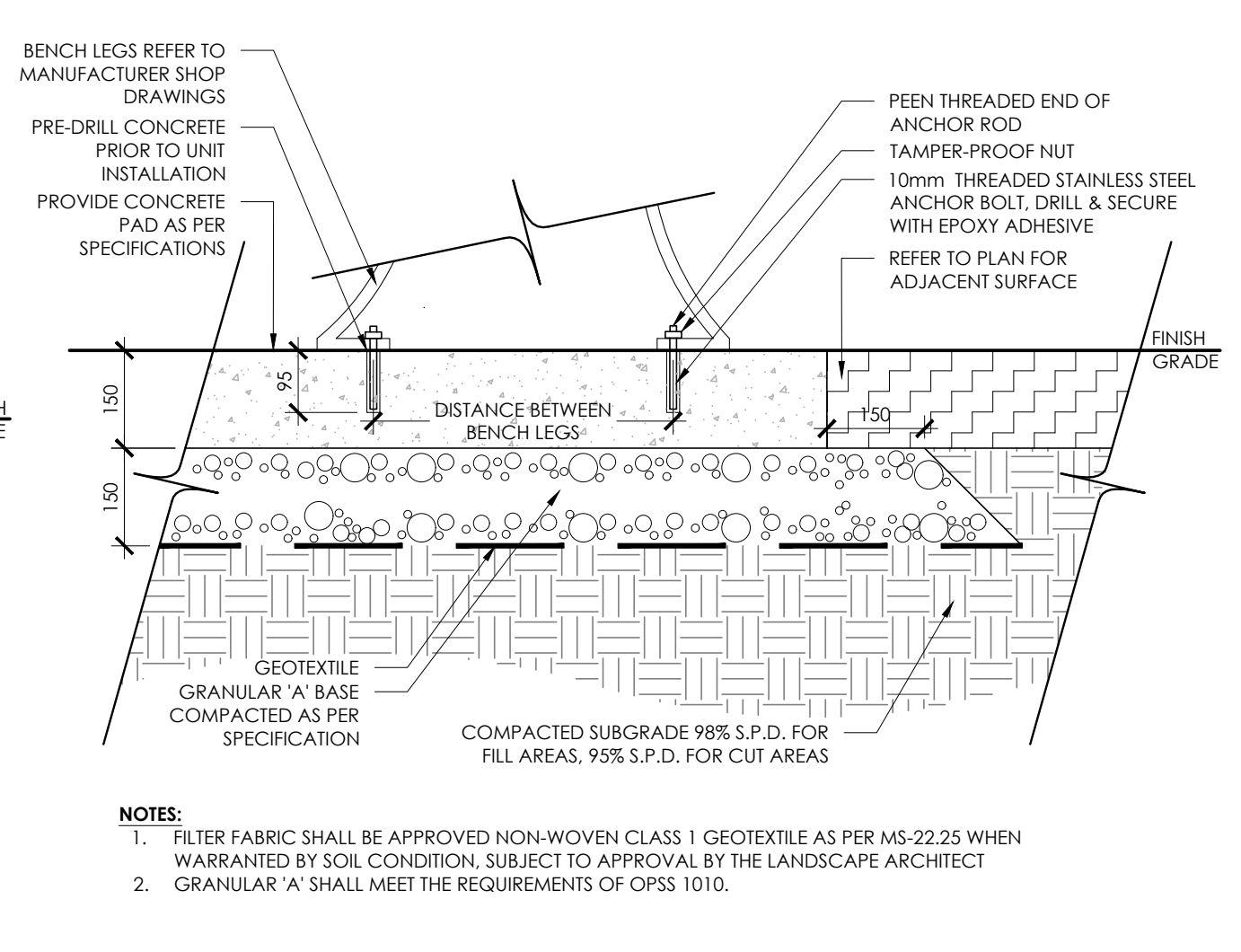
4 LIGHT DUTY UNIT PAVING  
N.T.S.



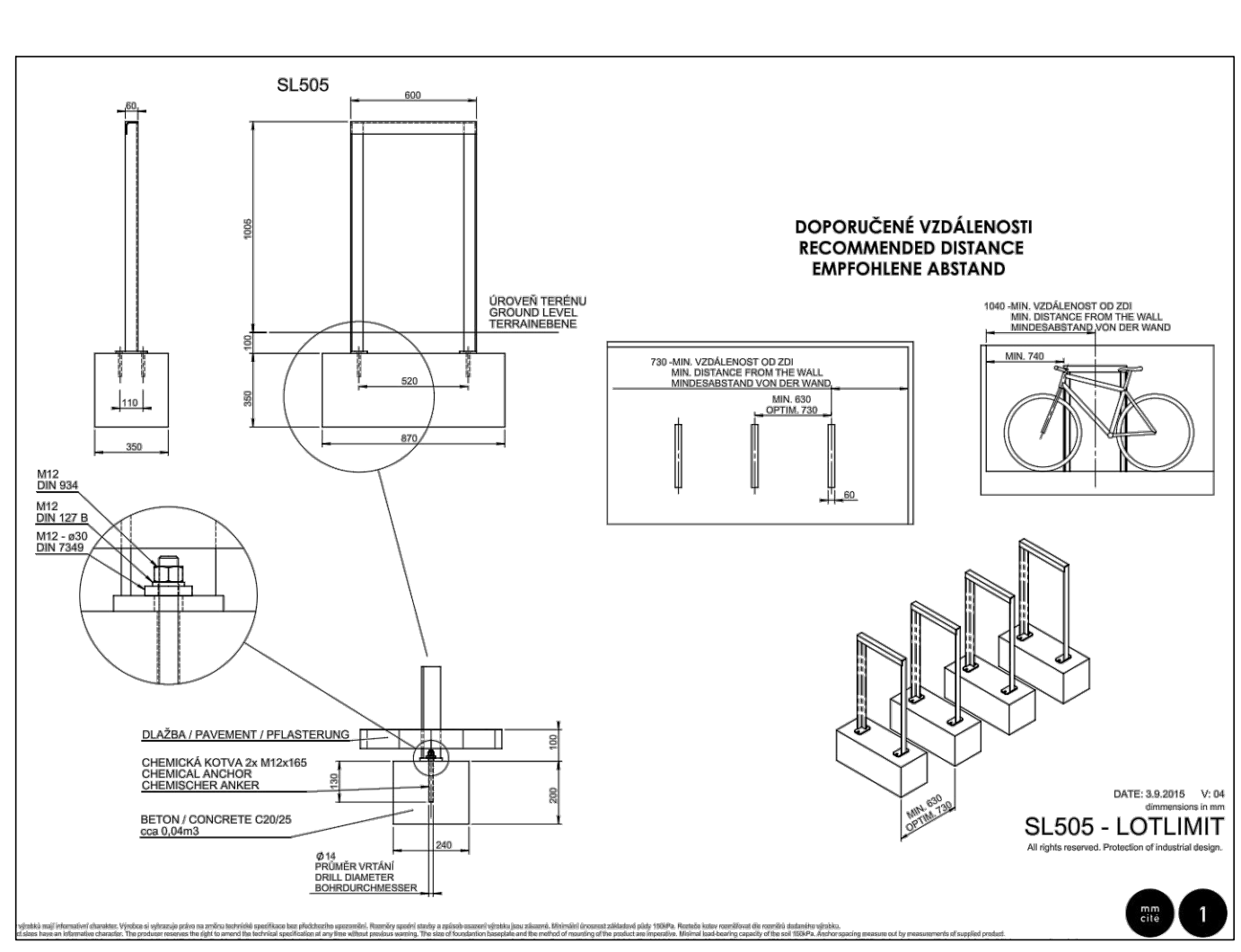
5 HEAVY DUTY CONCRETE PAVING  
N.T.S.



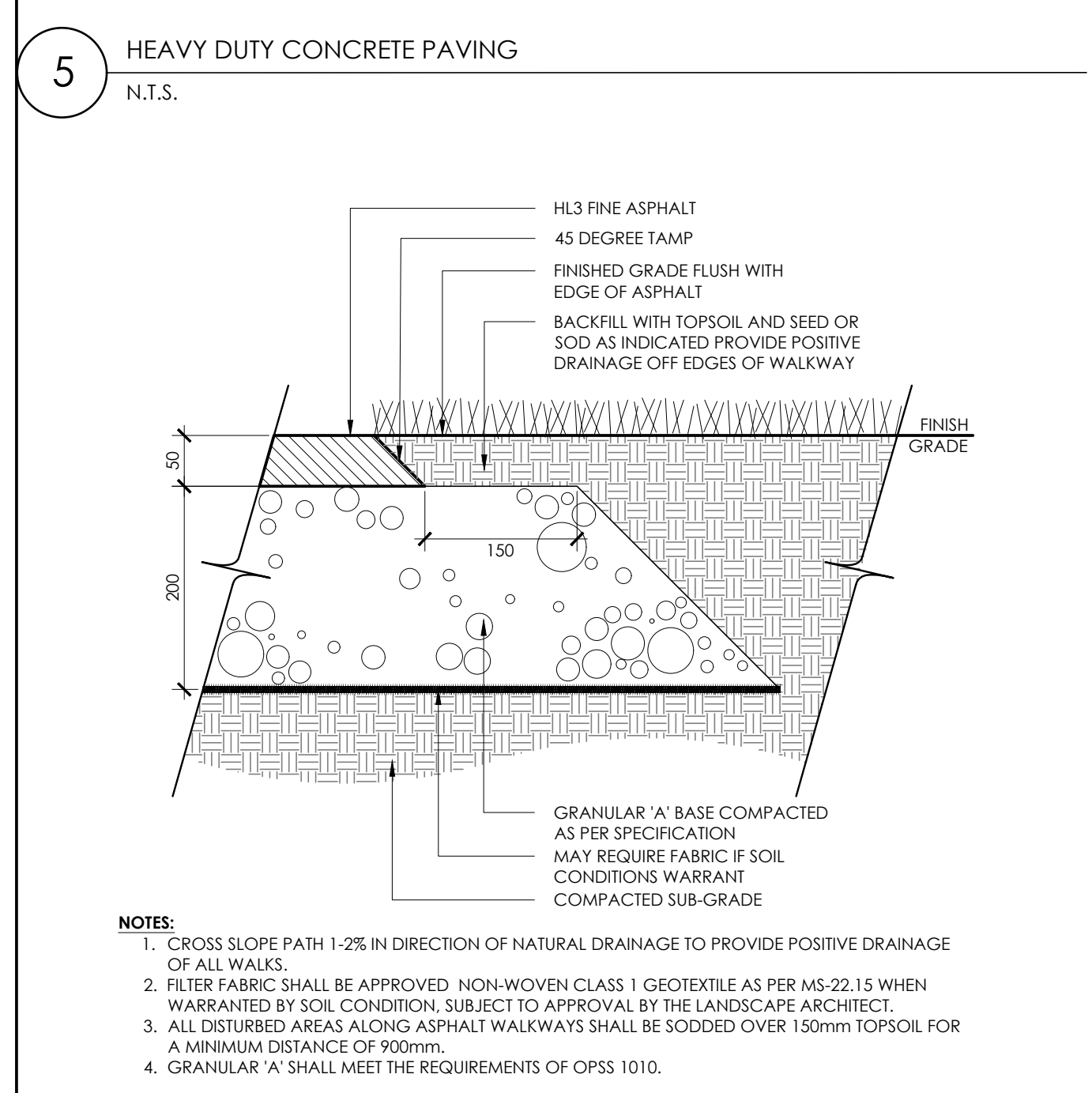
6 LIGHT DUTY CONCRETE PAVING  
N.T.S.



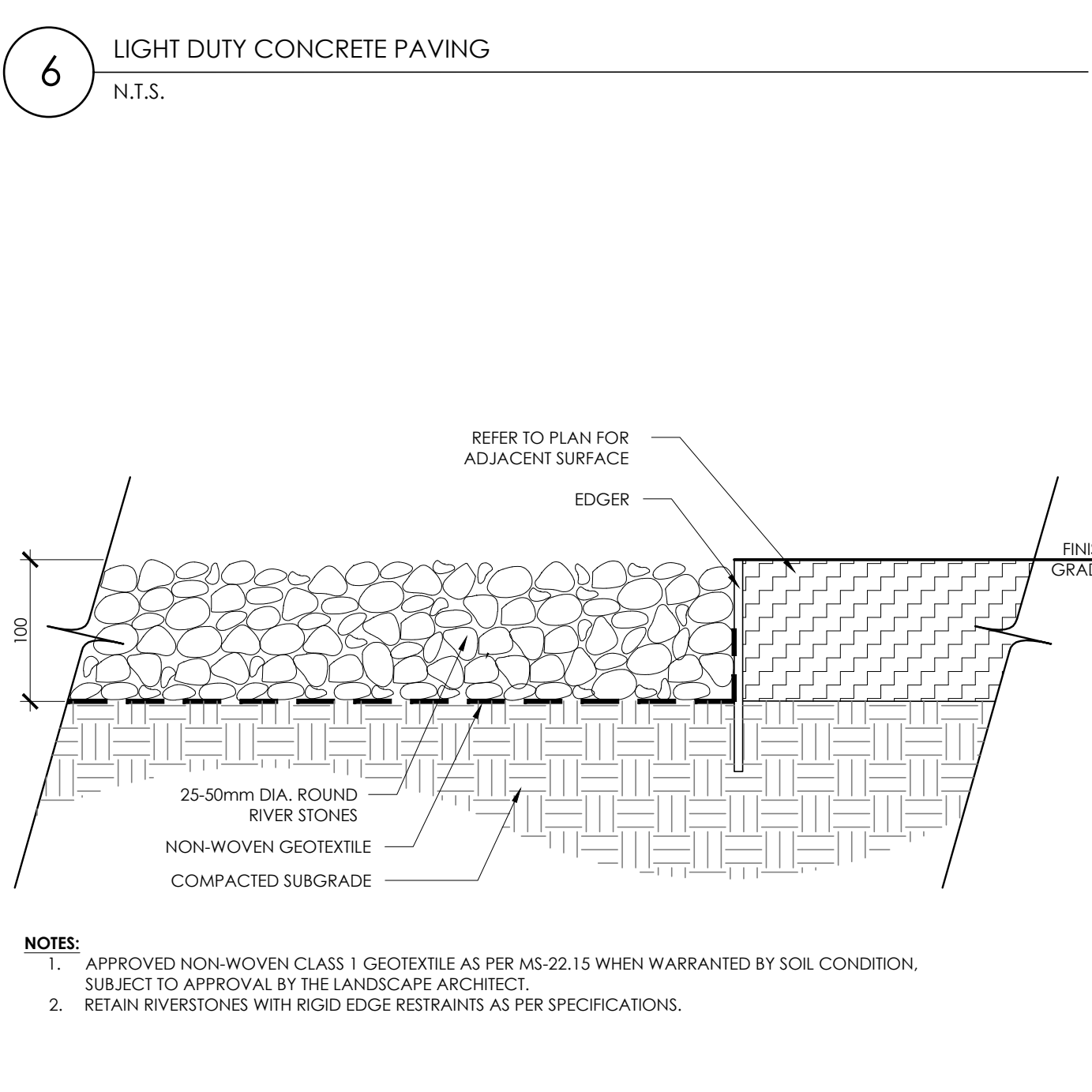
7 BENCH MOUNTING ON CONCRETE BASE  
N.T.S.



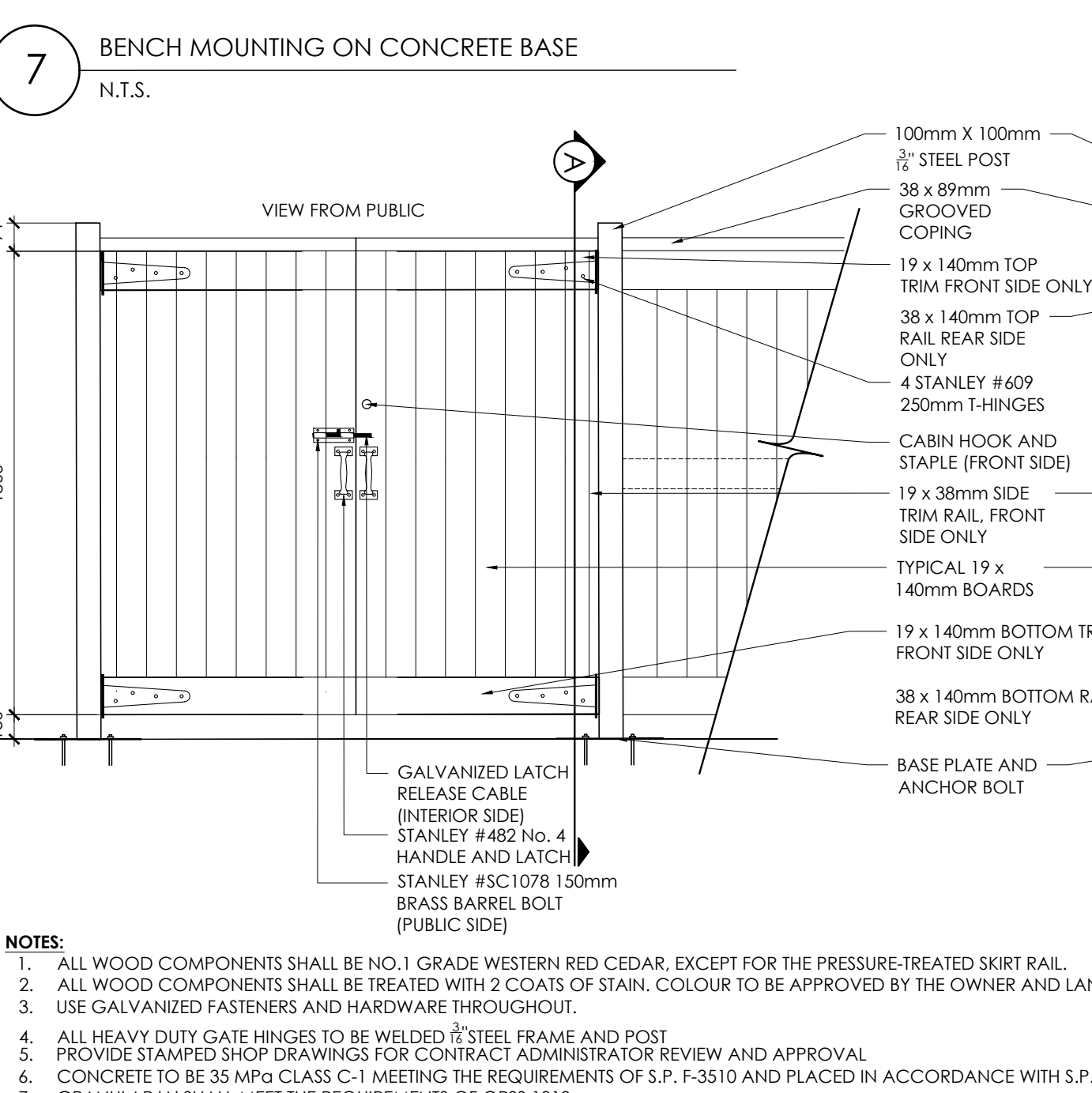
8 BIKE RACK - ON CIP CONCRETE  
N.T.S.



9 LIGHT DUTY ASPHALT PAVING  
N.T.S.



10 RIVER STONE PAVING  
N.T.S.



11 2.0m Ht. PEDESTRIAN ACCESS GATE AND FENCE  
N.T.S.

Contractor shall check all dimensions on the work and report any discrepancy to the Landscape Architect before proceeding. All drawings and specifications are the property of the Landscape Architect and must be returned at the completion of the work. This drawing is not to be used for construction until signed by the Landscape Architect.

Key Plan

|                     |                                |          |
|---------------------|--------------------------------|----------|
| 2                   | Re-issued for First Submission | FEB 2022 |
| 1                   | Issued for First Submission    | NOV 2021 |
| No.                 | Description                    | Date     |
| Revision            |                                |          |
| City Approval Stamp |                                |          |

|   |                  |
|---|------------------|
| SL505 - LOTLIMIT                          |                  |
| 2 Re-issued for First Submission FEB 2022 |                  |
| 1 Issued for First Submission NOV 2021    |                  |
| No.                                       | Description Date |
| Revision                                  |                  |
| City Approval Stamp                       |                  |

ASSOCIATION OF LANDSCAPE ARCHITECTS  
 OTTAWA  
 MEMBER

NAK design strategies

1285 WELLINGTON STREET WEST, OTTAWA, ON K1Y 3A8 CANADA  
 T 613.237.2345 F 613.237.6423 NAKDESIGNSTRATEGIES.COM

Project

HALF MOON BAY SOUTH  
 PHASE 8

Title

DETAILS

Date OCT.29/2021 Sheet

Scale N.T.S.

Drawn TY

CheckedDM

Job No. 20-210

D-01